

INSTALLATION INSTRUCTIONS

EQUIPMENT REQUIRED:

WIRING ACCESS LOCATION: SUV1 & SUV2

DRILL BITS: 7/16

HITCH REQUIRES 5/8" PIN AND CLIP IF STABILIZING PIN IS NOT INSTALLED.

WRENCHES: (TIGHTEN ALL FASTENERS WITH TORQUE WRENCH) 15mm, 17mm, 18mm, 19mm, 7/8

VEHICLE

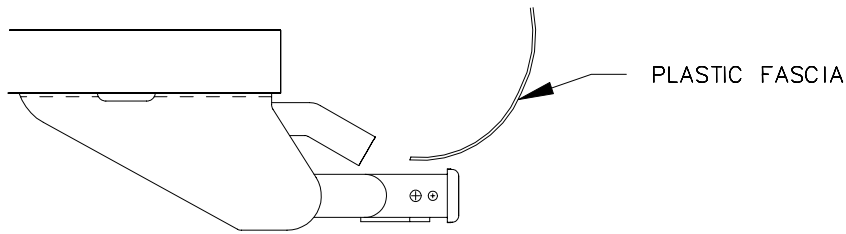
HITCH NO.

CHRYSLER TOWN & COUNTRY
DODGE CARAVAN
PLYMOUTH VOYAGER
(FITS ALL MODELS 2WD, 4WD,
SHORT, & LONG WHEELBASE)

75119
33045
78214 U-Haul

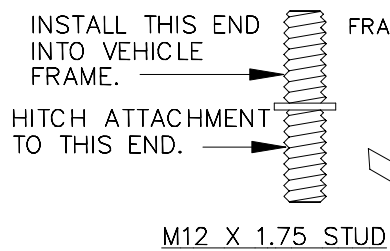
DO NOT EXCEED LOWER OF
TOWING VEHICLE MFR'S RATINGS OR

HITCH TYPE ▼	MAX GROSS TRLR WT(LB)	MAX TONGUE WT(LB)
WEIGHT DISTRIBUTING	5000	500
WEIGHT CARRYING BALL MOUNT	3500	350



PLASTIC FASCIA

HITCH SHOWN IN PROPER POSITION



INSTALL THIS END
INTO VEHICLE
FRAME.

HITCH ATTACHMENT
TO THIS END.

M12 X 1.75 STUD

7/16-14 X 1-3/4 GR5
CARRIAGE BOLT
1/4 X 1 X 3
BLOCK (3732)
CONICAL TOOTHED WASHER
NUT
TYPICAL BOTH SIDES

STUD (8325)
3/16 X 1 1/2 X 2
BLOCK (4833-001)
LOCK WASHER
NUT

HOLE TO BE
DRILLED
(1996-2000 MODELS)

ACCESS POINT
FOR FISHWIRING
BOLT AND BLOCK

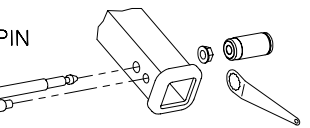
EXISTING M12 FASTENERS
TYPICAL BOTH SIDES

M12 X 1.75 STUD
SHOWN IN POSITION

FIGURE 1.
NORMAL INSTALLATION

OPTIONAL LOCKING STABILIZING PIN

J-PIN



(Order Separately)

NOTE: FOR NORMAL INSTALLATION ONLY.

IF VEHICLE HAS REAR STABILIZER BAR AND IS A SHORT WHEELBASE VEHICLE, SEE SHEET TWO.

1. REMOVE ONLY THE FRONT BUMPER BOLTS - BOTH SIDES.
2. INSTALL THE M12 X 1.75 STUD INTO POSITION, UNTIL SEATED TO FRAME, WHERE BUMPER BOLT WAS REMOVED - BOTH SIDES. FINAL TIGHTENING WILL OCCUR WHEN NUTS ARE TIGHTENED.
3. REMOVE REAR BUMPER BOLTS AND PLACE HITCH INTO POSITION AS SHOWN.
4. USING THE HITCH AS A TEMPLATE, DRILL A 7/16" HOLE IN EACH FRAME RAIL FOR THE FORWARD ATTACHMENT, SEE FIGURE 1 FOR HOLE LOCATION.
5. FISHWIRE 7/16" BOLTS & BLOCKS THROUGH THE OVAL HOLE ON SIDE BRACKETS.

TIGHTEN 7/16 GR5 FASTENERS TO 50 LB.-FT.

TIGHTEN M12 FASTENERS TO 75 LB.-FT.

THIS PRODUCT COMPLIES WITH SAFETY SPECIFICATIONS AND REQUIREMENTS FOR CONNECTING DEVICES AND TOWING SYSTEMS OF THE STATE OF NEW YORK AND V.E.S.C. REGULATION V-5.

APPROX WEIGHT (LB.)	FASTENER KIT
45	F75119

NOTE: Check hitch frequently, making sure all fasteners and ball are properly tightened. If hitch is removed, plug all holes in trunk pan or other body panels to prevent entry of water and exhaust fumes. A hitch or ball which has been damaged should be removed and replaced. Observe safety precautions when working beneath a vehicle and wear eye protection. Follow car maker's specs for maximum trailer weight and tongue weight. Do not cut access or attachment holes with a torch.

TOWING PRODUCTS
Plymouth, Michigan

INSTALLATION INSTRUCTIONS

VEHICLE

HITCH NO.

75119

33045

78214 U-Haul

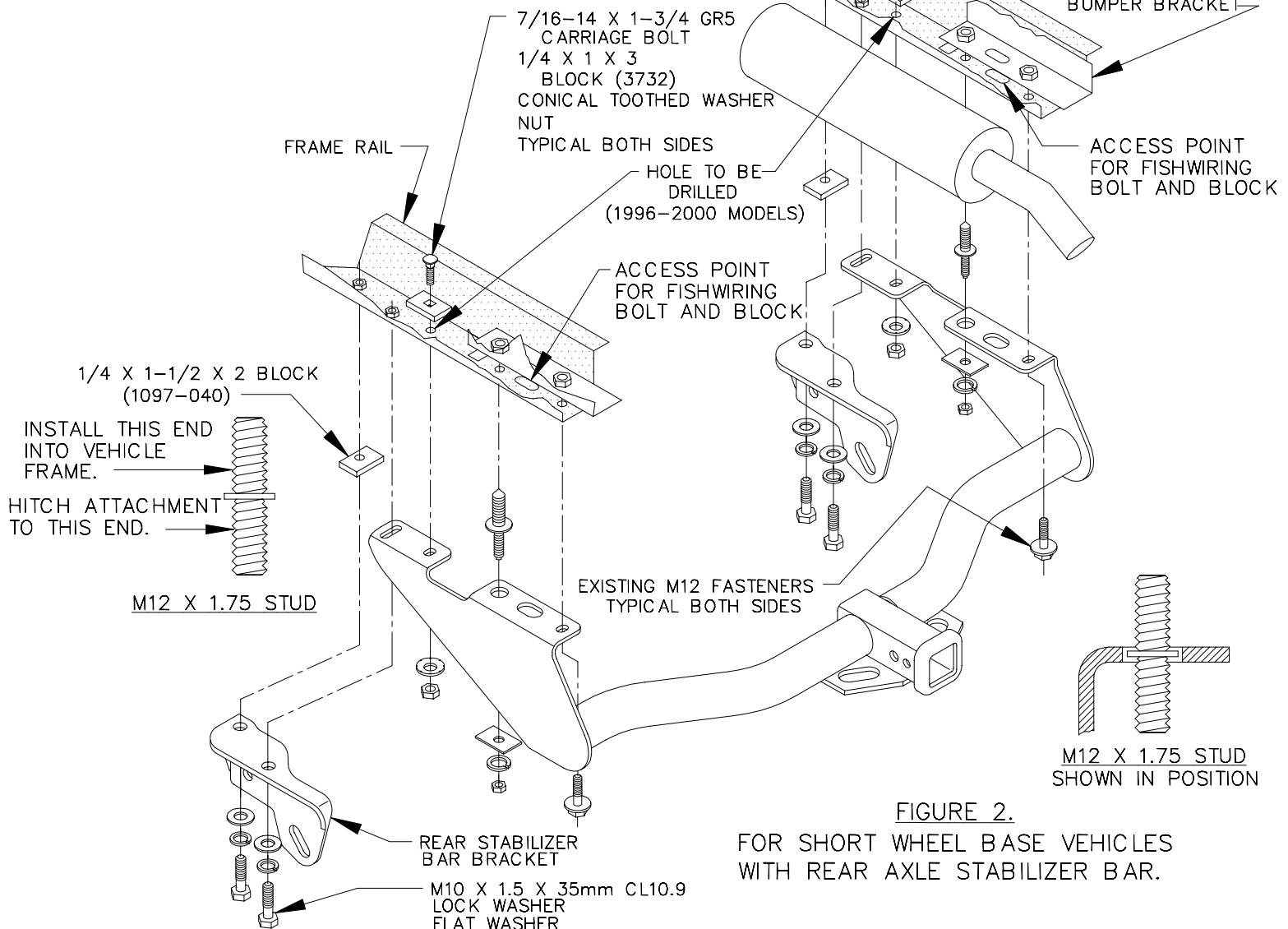


FIGURE 2.

FOR SHORT WHEEL BASE VEHICLES WITH REAR AXLE STABILIZER BAR.

NOTE: FOR SHORT WHEEL BASE VEHICLES WITH REAR AXLE STABILIZER BAR ONLY.

IF VEHICLE IS LONG WHEEL BASE OR DOES NOT HAVE STABILIZER BAR SEE SHEET ONE.

1. REMOVE ONLY THE FRONT BUMPER BOLTS - BOTH SIDES.
2. INSTALL THE M12 X 1.75 STUD INTO POSITION, UNTIL SEATED TO FRAME, WHERE BUMPER BOLT WAS REMOVED - BOTH SIDES. FINAL TIGHTENING WILL OCCUR WHEN NUTS ARE TIGHTENED.
3. REMOVE TWO M10 X 1.5 REAR STABILIZER BAR BRACKET BOLTS FROM EACH FRAME RAIL.
4. REMOVE REAR BUMPER BOLTS AND PLACE HITCH INTO POSITION AS SHOWN.
5. REATTACH REAR STABILIZER BAR BRACKETS USING SPACER BLOCK & LONGER FASTENERS PROVIDED.
6. USING THE HITCH AS A TEMPLATE, DRILL A 7/16" HOLE IN EACH FRAME RAIL FOR THE FORWARD ATTACHMENT, SEE FIGURE 1 FOR HOLE LOCATION.
7. FISHWIRE 7/16" BOLTS & BLOCKS THROUGH THE OVAL HOLE ON SIDE BRACKETS.

TIGHTEN 7/16 GR5 FASTENERS TO 50 LB.-FT.

TIGHTEN M10 FASTENERS TO 42 LB.-FT.

TIGHTEN M12 FASTENERS TO 75 LB.-FT.

THIS PRODUCT COMPLIES WITH SAFETY SPECIFICATIONS AND REQUIREMENTS FOR CONNECTING DEVICES AND TOWING SYSTEMS OF THE STATE OF NEW YORK AND V.E.S.C. REGULATION V-5.

APPROX WEIGHT (LB.)

45

FASTENER KIT

F75119

NOTE: Check hitch frequently, making sure all fasteners and ball are properly tightened. If hitch is removed, plug all holes in trunk pan or other body panels to prevent entry of water and exhaust fumes. A hitch or ball which has been damaged should be removed and replaced. Observe safety precautions when working beneath a vehicle and wear eye protection. Follow car maker's specs for maximum trailer weight and tongue weight. Do not cut access or attachment holes with a torch.

TOWING PRODUCTS
Plymouth, Michigan