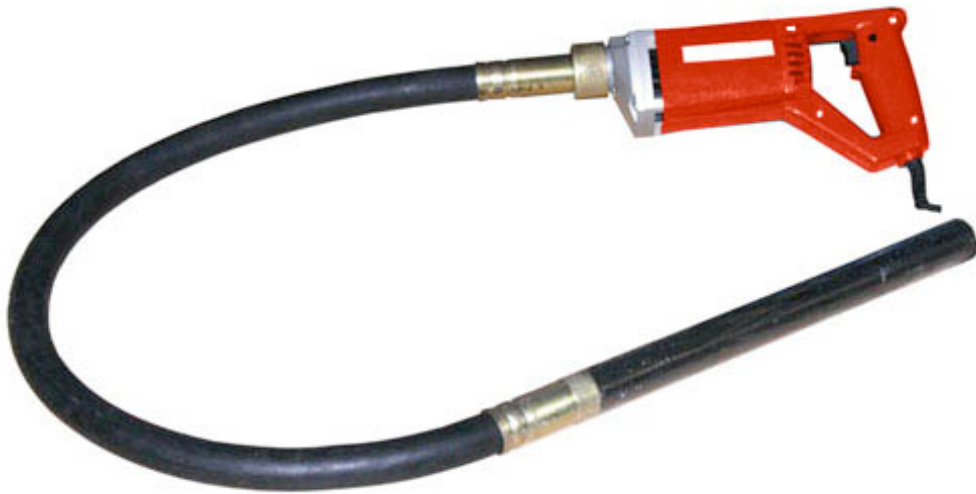





# **CONCRETE VIBRATOR**

## **OWNER'S MANUAL**



 **WARNING:** Read carefully and understand all **INSTRUCTIONS** before operating. Failure to follow the safety rules and other basic safety precautions may result in serious personal injury.

**Item# 999360**

Thank you very much for choosing a NORTHERN TOOL + EQUIPMENT CO., INC. Product! For future reference, please complete the owner's record below:

Model: \_\_\_\_\_ Purchase Date: \_\_\_\_\_

Save the receipt, warranty and these instructions. It is important that you read the entire manual to become familiar with this product before you begin using it.

This machine is designed for certain applications only. Northern Tool + Equipment cannot be responsible for issues arising from modification. We strongly recommend this machine is not modified and/or used for any application other than that for which it was designed. If you have any questions relative to a particular application, DO NOT use the machine until you have first contacted Northern Tool + Equipment to determine if it can or should be performed on the product.

For technical questions please call **1-800-222-5381**.

## INTENDED USE

A concrete vibrator is a construction tool used on concrete pouring sites to settle poured concrete.

## TECHNICAL SPECIFICATIONS & PACKING LIST

Item	Description
Power Supply	110V/60HZ
Current	5.3Amp
Actual Power	550W (3/4 HP)
Power Rating	750W (1HP)
Vibration Frequency	13,000 VPM

## GENERAL SAFETY RULES



**WARNING: Read and understand all instructions.** Failure to follow all instructions listed below may result in electric shock, fire and/or serious injury.



**WARNING: The warnings, cautions, and instructions discussed in this instruction manual cannot cover all possible conditions or situations that could occur.** It must be understood by the operator that common sense and caution are factors which cannot be built into this product, but must be supplied by the operator.

## SAVE THESE INSTRUCTIONS

## WORK AREA

- â **Keep work area clean**, free of clutter and well lit. Cluttered and dark work areas can cause accidents.
- â **Do not use your tool where there is a risk of causing a fire or an explosion**; e.g. in the presence of flammable liquids, gasses, or dust. Power tools create sparks, which may ignite the dust or fumes.
- â **Keep children and bystanders** away while operating a power tool. Distractions can cause you to lose control, so visitors should remain at a safe distance from the work area.
- â **Be aware of all power lines, electrical circuits**, water pipes and other mechanical hazards in your work area, particularly those hazards below the work surface hidden from the operator's view that may be unintentionally contacted and may cause personal harm or property damage.
- â **Be alert of your surroundings**. Using power tools in confined work areas may put you dangerously close to cutting tools and rotating parts.

## ELECTRICAL SAFETY



**WARNING:** Always check to ensure the power supply corresponds to the voltage on the rating plate.

- â **The electric motor has been designed for 110V only**. Always check that the power supply corresponds to the voltage on the rating plate. Before performing any maintenance work on the concrete vibrator itself, disconnect the vibrator from the power supply.
- â Always keep this vibrator clean for better and safer performance. Inspect the power cord periodically and if damaged, have it repaired by a repairman. Inspect extension cords periodically and replace them if damaged.
- â Do not abuse the cord, never carry the vibrator by the cord or yank it to disconnect the vibrator from the power source. Keep power and extension cords away from heat, oil, sharp edges or moving parts. Replace damaged cords immediately. Damaged cords may cause a fire and increase the risk of electric shock
- â Avoid body contact with earth or ground surface. Do not carry this vibrator with a finger on the switch. Ensure switch is off when plugging in to the power source. Always ensure that the vibrator is properly insulated. Always pay attention to the cable or cable guard. Don't use a coolant or water near the vibrator; do not use the vibrator if your power connection isn't in good operation or you detect a sparking problem.
- â **Grounded tools** must be plugged into an outlet properly installed and grounded in accordance with all codes and ordinances. Never remove the grounding prong or modify the plug in any way. Do not use any adapter plugs. Check with a qualified electrician if you are in doubt as to whether the outlet is properly grounded.
- â **Double insulated tools** are equipped with a polarized plug (one blade is wider than the other). This plug will fit in a polarized outlet only one way. If the plug does not fit fully in the outlet, reverse the plug. If it still doesn't fit, contact a qualified electrician to install a polarized outlet. Do not change the plug in any way.
- â **When operating a power tool outside**, use an outdoor extension cord marked "W-A" or "W." These cords are rated for outdoor use and reduce the risk of electric shock.
- â **Extension Cord Use:**
  1. Use only 'Listed' extension cords. If used outdoors, they must be marked "For Outdoor

Use.” Those cords having 3-prong grounding type plugs and mating receptacles are to be used with grounded tools.

2. Replace damaged or worn cords immediately.
3. Check the name plate rating of your tool. Use of improper size or gauge of extension cord may cause unsafe or inefficient operation of your tool. Be sure your extension cord is rated to allow sufficient current flow to the motor. For the proper wire gauge for your tool, see chart.

**CHART FOR MINIMUM WIRE SIZE OF EXTENSION CORD:**

Nameplate AMPS	CORD LENGTH			
	25'	50'	100'	150'
0-6	18 AWG	16 AWG	16 AWG	14 AWG
6-10	18 AWG	16 AWG	14 AWG	12 AWG
10-12	16 AWG	16 AWG	14 AWG	12 AWG
12-16	14 AWG	12 AWG	(NOT RECOMMENDED)	

If in doubt, use larger cord.

Be sure to check voltage requirements of the tool to your incoming power source.

- ⌚ **Do not expose** power tools to rain or wet conditions. Water entering a power tool will increase the risk of electric shock.
- ⌚ **Do not let your fingers** touch the terminals of plug when installing to or removing from the outlet.
- ⌚ **Ground fault circuit interrupters.** If work area is not equipped with a permanently installed Ground Fault Circuit Interrupter outlet (GFCI), use a plug-in GFCI between power tool or extension cord and power receptacle.

## PERSONAL SAFETY

- ⌚ **Stay alert,** watch what you are doing and use common sense when operating a power tool. Do not use a power tool while you are tired or under the influence of drugs, alcohol or medication. A moment of inattention while operating power tools may result in serious personal injury.
- ⌚ **Dress properly.** Do not wear loose clothing, dangling objects, or jewelry. Keep your hair, clothing and gloves away from moving parts. Loose clothes, jewelry or long hair can be caught in moving parts. Air vents often cover moving parts and should be avoided.
- ⌚ **Use safety apparel and equipment.** Use safety goggles or safety glasses with side shields which comply with current national standards, or when needed, a face shield. Use as dust mask in dusty work conditions. This applies to all persons in the work area. Also use non-skid safety shoes, hardhat, gloves, dust collection systems, and hearing protection when appropriate.
- ⌚ **Avoid accidental starting.** Do not carry the power tool with your finger on the switch. Ensure the switch is in the off position before plugging tool into power outlet. In the event of a power failure, while a tool is being used, turn the switch off to prevent surprise starting when power is restored.
- ⌚ **Do not overreach.** Keep proper footing and balance at all times.
- ⌚ **Remove adjusting keys or wrenches** before connecting to the power supply or turning on the tool. A wrench or key that is left attached to a rotating part of the tool may result in personal injury.

## VIBRATOR USE AND CARE

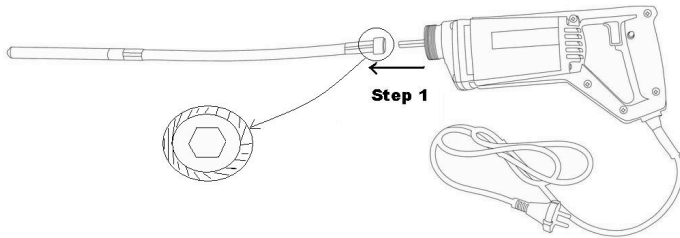
- **Do not force the vibrator.** Tools do a better and safer job when used in the manner for which they are designed. Plan your work, and use the correct tool for the job.
- **Never use a tool** with a malfunctioning switch. Any power tool that cannot be controlled with the switch is dangerous and must be repaired by an authorized service representative before using.
- **Disconnect power** from the vibrator and place the switch in the off position before servicing, adjusting, installing accessories or attachments, or storing. Such preventive safety measures reduce the risk of starting the vibrator accidentally.
- **This tool vibrates during use.** Repeated or long-term exposure to vibrations may cause temporary or permanent physical injury, particularly to the hands, arms and shoulders. Include several vibration-free periods throughout the work day.
- **Store idle tools.** When the vibrator is not in use, store it in a dry, secure place out of the reach of children. Inspect the vibrator for good working condition prior to storage and before re-use.
- **Use only accessories that are recommended** by the manufacturer for your model. Accessories that may be suitable for one tool may create a risk of injury when used on another tool.
- **Keep guards in place** and in working order.
- **Never allow** any person to operate the vibrator unless they are familiar with its operation.
- **Ensure all operators** read, understand and follow the operating instructions.
- A concrete vibrator is heavy, and typical use of this vibrator will include construction settings where the operator will be working on high walls. DO NOT operate the machine unless all protective guards are in place. The weight and vibration of the machine could cause operator to fall if guards are not in place.
- **Keep the switch** of the motor in the OFF position when not in use.
- **Do not put** the vibrator head on the hard ground or other hard surfaces when the vibrator is operating.
- **Ensure that the molding board is secure** if working on vertical applications to ensure that any concrete walls or pillars will not collapse due to the powerful vibration produced by this machine.
- **Do not touch** the running vibrator head.
- **Do not let** the vibrator run unattended.
- **Do not install** the vibrator shaft to the motor when the motor is in operation.
- If the machine needs repair beyond routine maintenance, contact an authorized service representative.

## OPERATION

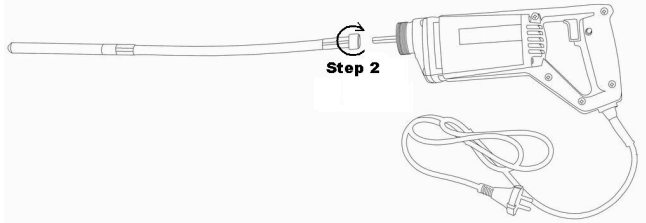
The Concrete Vibrator is designed to mix concrete through vibration, aiding setting and curing of concrete.

### Operating Steps:

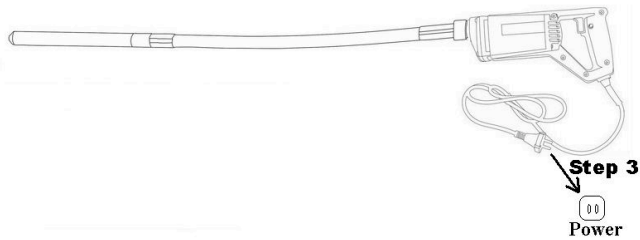
1. Insert the output shaft of the motor to the hexagonal socket of the vibrator shaft.



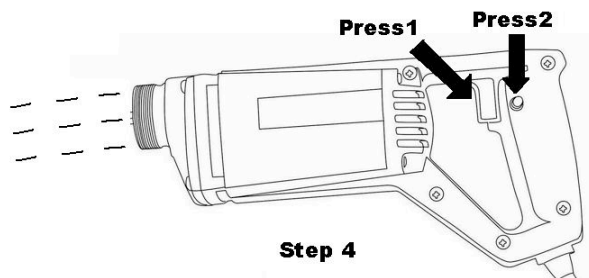
2. Attach the threaded sleeve to the motor. Ensure the attachment is secure.



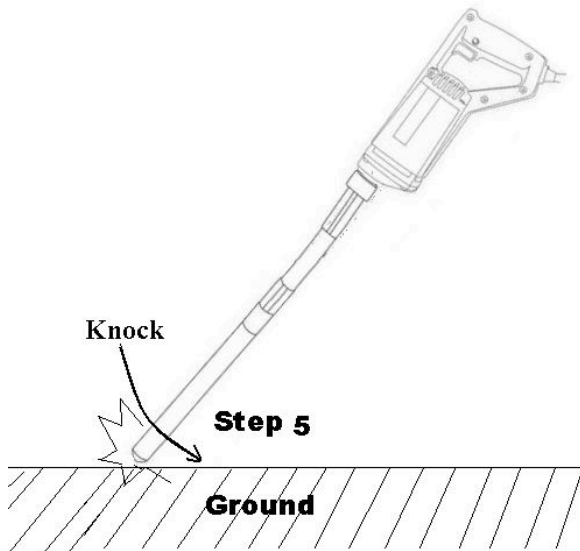
3. Plug the motor into a 110V AC power supply.



4. Press the ON/OFF button on the handle of the motor to start the vibrator. If you need to use the vibrator for an extended period, you can engage the trigger lock button adjacent to the ON/OFF button (shown below).



5. Knock the vibrator head on the ground or another hard surface the first time you use the vibrator only.



6. Place the vibrator head in the concrete at the recommended depth for your application. Continue vibrating concrete as needed.



7. When work is complete, turn the ON/OFF switch to the OFF position.
8. Remove the power cord from the 110V power source.
9. Separate the vibrator shaft from the motor.

### **EMERGENCY SHUTDOWN**

In case of an emergency, remove the power cord from the 110V power source. This is most immediate way to make to machine stop. For normal shutdown, turn the machine off using the ON/OFF switch.

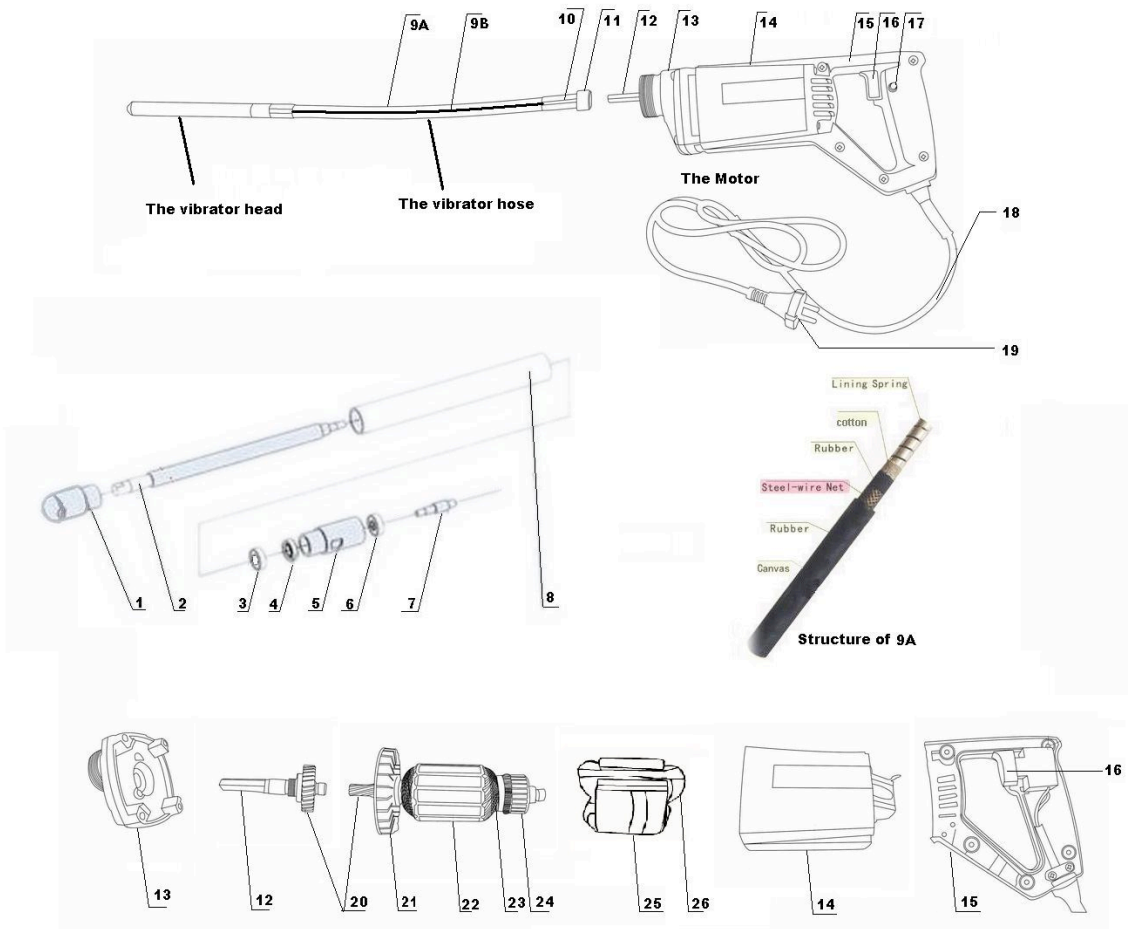
## MAINTENANCE



**WARNING:** Make sure this tool is disconnected from its power source before attempting any maintenance, cleaning, or inspection.

- â It is recommended that the general condition of any tool be examined before it is used. Keep your tools in good repair by adopting a program of conscientious repair and maintenance in accordance with the recommended procedures found in this manual. If any abnormal vibrations or noise occurs, turn the tool off immediately and have the problem corrected before further use. Have necessary repairs made by qualified service personnel.
- â Use only soap and a damp cloth to clean your tools. Many household cleaners are harmful to plastics and other insulation. Never let liquid get inside a tool.
- â Before any performing any maintenance work on the machine itself, disconnect the tool from its power source.
- â The brushes should be checked periodically and worn-out brushes should be replaced. After replacing, inspect whether the new brushes can move freely in the brush holder. Keep running the motor for 15 minutes to match the contact of the brushes and commutator the first time you use the vibrator.
- â Keep the ventilation slots free from dirt; clean off any accumulated dust and oil periodically.
- â During normal operation, if anything unusual happens, the power supply should be cut off at once and the tool should be checked and repaired.
- â Regularly inspect all mounting screws and ensure that they are properly tightened; if any of the screws loosen, tighten them immediately. Failure to do so could result in personal injury.
- â Do not expose the tool to rain, do not use the power tools in damp or wet location, and keep work area well lit. Don't use power tool where there is risk to cause fire or explosion.

# DIAGRAM & PARTS LIST



Part#	Description	Qty.	Part#	Description	Qty.
1	Nose Cap	1	14	Main Shell	1
2	Tapered Cap	1	15	Hand Shell	1
3	Oil pan filler block	1	16	ON/OFF Button	1
4	Oil seal	1	17	Lock Button	1
5	Hose coupling	1	18	Supply cord	1
6	Head Bearing	1	19	Plug	1
7	Flexible shaft coupling	1	20	Commutator gear	2
8	Sleeve	1	21	Fan	1
9A	Flexible Hose	1	22	Rotor	1
9B	Flexible Shaft	1	23	Rotor coil	1
10	Hexagonal socket	1	24	Brushes	2
11	Threaded sleeve	1	25	Stator housing	1
12	Output shaft	1	26	Stator coil	1
13	Metal cover	1			

For replacement parts and technical questions, please call **1-800-222-5381**.

## WARRANTY

### One Year Limited Warranty

# **WARNING**

Some dust created by power sanding, sawing, grinding, drilling, and other construction activities contains chemicals known to the State of California to cause cancer, birth defects or other reproductive harm.

Some examples of these chemicals are:

- lead from lead-based paints,
- crystalline silica from bricks and cement and other masonry products, and
- arsenic and chromium from chemically-treated lumber.

Your risk from these exposures varies, depending on how often you do this type of work. To reduce your exposure to these chemicals: work in a well ventilated area, and work with approved safety equipment, such as those dust masks that are specially designed to filter out microscopic particles.



Northern Tool + Equipment Co.,  
2800 Southcross Drive West  
P.O. Box 1499 Burnsville, MN 55337-0499  
Made in China