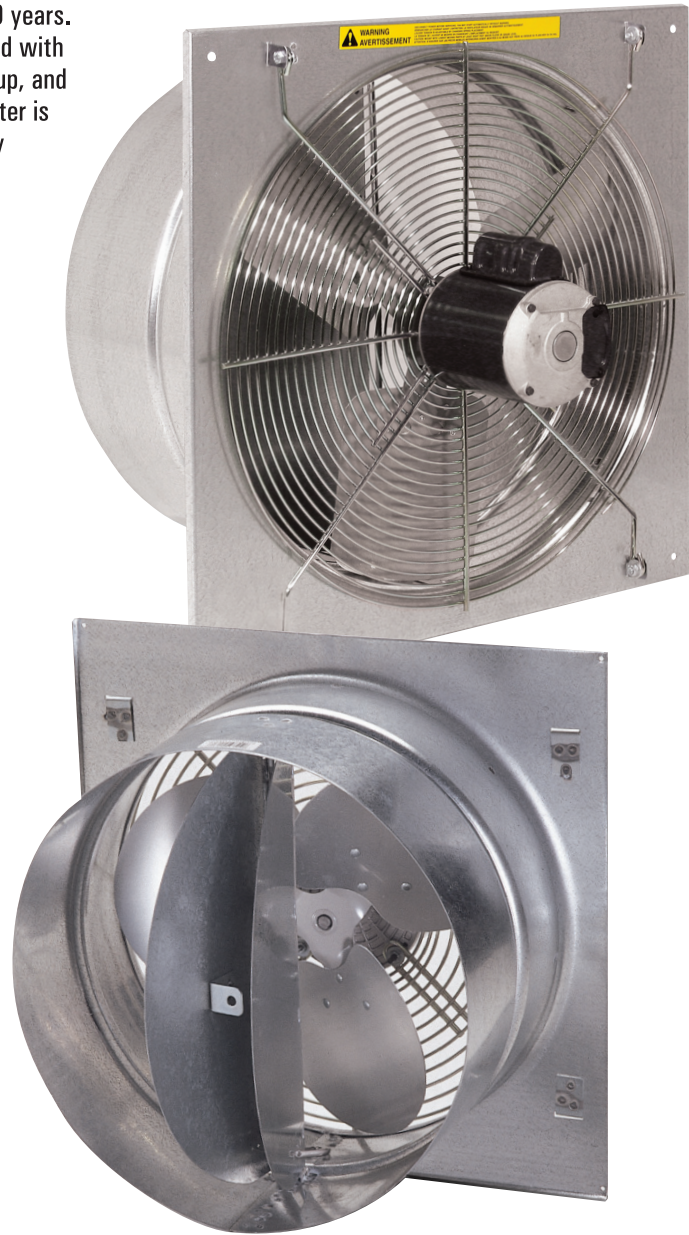


## Twister Exhaust Fan

J&D Manufacturing's Twister exhaust fan remains unchanged after 20 years. Why change a fan that is this dependable? The Twister is manufactured with a heavy gauge housing and butterfly shutters that open easily on startup, and spring closed when not in use to create a tight weather seal. The Twister is an excellent choice for farms, greenhouses, garages, workshops, hobby shops and a variety of industrial and commercial spaces.

### Features

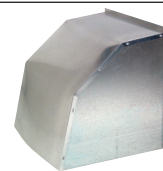
- Aluminum prop with zinc plated hub is balanced for smooth vibration-free operation
- Hinged rear guard allows for easy cleaning and maintenance by simply removing two bolts and swinging out the fan assembly
- 18 gauge galvanized butterfly shutter has adjustable positive draft-free closure
- Fan comes fully assembled for easy installation
- Direct drive motor
- Heavy duty 18 gauge galvanized housing
- Heavy-duty motor mount / safety guard combination has an easy-to-clean coated finish
- Rear guard conforms to OSHA 1910.212(a)(5) safety requirements to mount at any height on motor side of fan (damper side should be mounted 7' above ground)
- Totally enclosed, maintenance-free, high-efficiency motors have completely sealed ball bearings, UL and CUL recognized, and are covered by a **Two Year Warranty**
- Optional galvanized weather hood available to protect your fan from harsh weather and severe wind



Part #	Sz	Ph	Spd <sup>^</sup>	@0.10" SP		Prop	Rough Opening
				CFM	Watt		
<b>Single Phase</b>							
VFT141130	12"	1	1/Var	780	8.5	3-Alm	13 <sup>3</sup> / <sub>4</sub> " x 13 <sup>3</sup> / <sub>4</sub> "
VFT141131	16"	1	1/Var	<b>2,050</b>	<b>7.7</b>	3-Alm	18" x 18"
VFT141132	20"	1	1/Var	<b>2,630</b>	<b>9.7</b>	3-Alm	22" x 22"
VFT141133	24"	1	1/Var	<b>4,470</b>	<b>11.7</b>	3-Alm	25 <sup>1</sup> / <sub>4</sub> " x 25 <sup>1</sup> / <sub>4</sub> "
<sup>^</sup> Variable speed fans require separate variable speed control to adjust fan speed <b>Bold red text is data based on testing performed by an accredited lab using ANSI/AMCA Standard 210-07</b> <b>OSHA requires this fan to be mounted with damper side of fan 7' above the floor</b>							

### Optional Weather Hood

Shutter Fan Size	Weather Hood
12"	VFT140855
16"	VFT140856
20"	VFT140857
24"	VFT140858



Weather hood for exterior shutter side of fan

**⚠ WARNING:** This product can expose you to chemicals including lead, which is known to the State of California to cause cancer and birth defects or other reproductive harm. For more information go to [www.P65Warnings.ca.gov/product](http://www.P65Warnings.ca.gov/product).

Due to our continual effort to provide the best products available and adhere to market conditions; literature, products, prices and availability are subject to change without notice.