

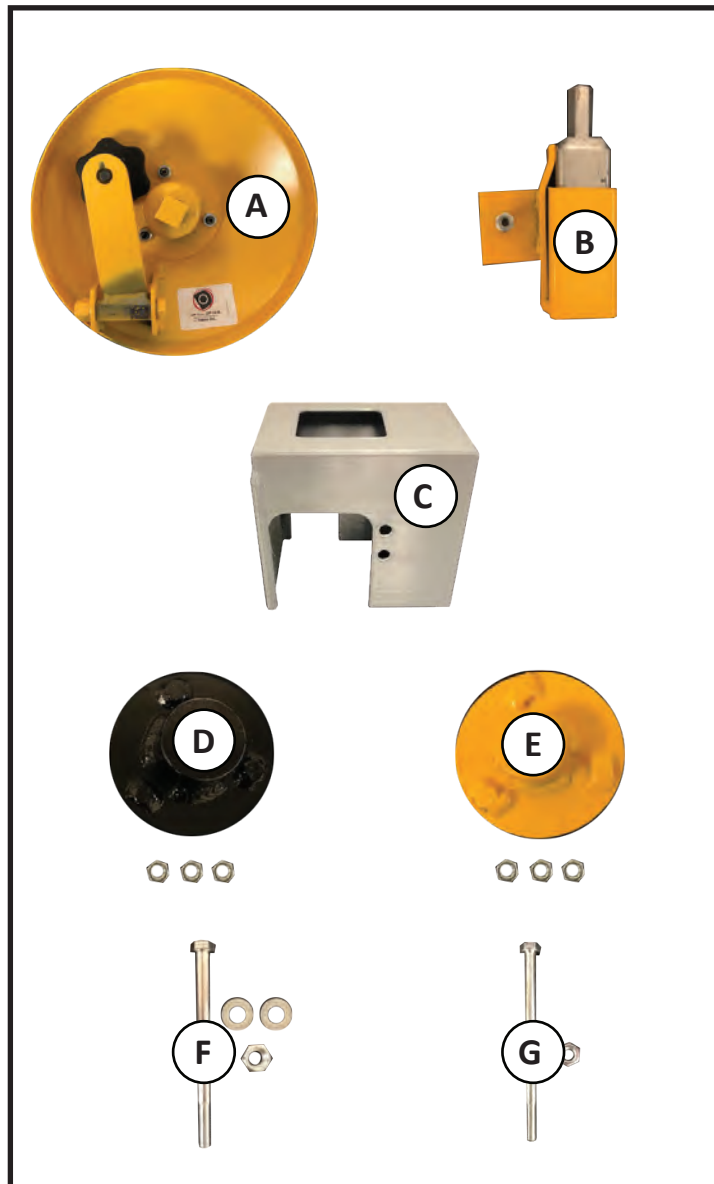


DRILL DRIVE™
WINCH SYSTEMS

Installation Guide Model 1013

Patent 7,484,713

NOTE: This Drill Drive Winch System is designed to be compatible with Genuine GILLIFT or Cabinetizer Brand Cabinet/Material Lifts manufactured by Telpro Inc and Paragon Pro. Use in any other application or for any other purpose may be unsafe and is not recommended.



Parts Included:

- A: Winch Handle Fully Assembled
- B: Drilldrive Adaptor and Storage Socket
- C: Winch Guard
- D: Black Winch Hub (Note: Use this part with the 76 containing the Black Winch)
- E: Yellow Winch Hub (Note: Use this part with the 76 containing the Chrome Winch)
- F: 3/8 x 5 Bolt with 3/8 Nylock Nut & 3/8 Flat Washer (Note: Use this part with the 76 containing the Black Winch)
- G: 5/16 x 5 Bolt with 5/16 Nylock Nut (Note: Use this part with the 76 containing the Chrome Winch)

**Paragon Pro
Manufacturing Solutions**

7251 S 42nd St.
Grand Forks, ND 58201
701-775-0551

Paragon Pro. 2010 All Rights Reserved

To our valued customer,

Thank you for choosing a **Telpro Inc.** product by **PARAGON PRO** Manufacturing Solutions. We are pleased that we are able to provide equipment to make your work easier.

Our efforts are focused on producing the finest quality equipment of which we are capable. We make sure to spend extra time and effort on our design and production in order to reduce your time and effort spent using the product.

We take pride in providing the best for our customers. Quality, innovation, and excellence are all qualities this company ensures. No product is sent without being factory tested and inspected to ensure the highest quality for you.

It all began in 1972 when Roland Young designed our first product, the PANEL-LIFT® Brand Drywall Lift, and revolutionized the drywall industry. To this day we are continuously making advancements in manufacturing and design.

Thank you again for giving us the opportunity to work with you. Any questions or comments that you have are always welcome.

PARAGON PRO
MANUFACTURING SOLUTIONS

CONTENTS

Parts Index Page 1

Tools Needed Page 1

Assembly Pages 2 - 5

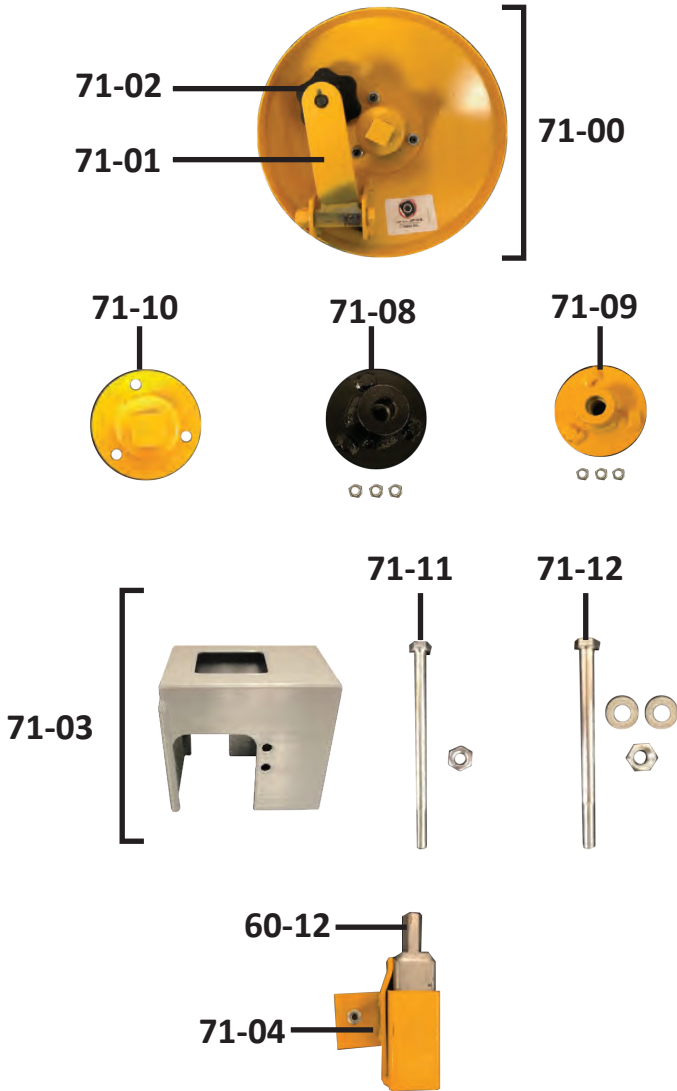
Warranty Page 6

Safety Info Page 7

ALL PHOTOS ARE FOR ILLUSTRATIVE PURPOSES ONLY.

ALWAYS WEAR PROPER PERSONAL PROTECTIVE EQUIPMENT.

PARTS INDEX



Parts/ Description/ Quantity

60-12	Adapter	1
71-00	Dual Drive Winch Handle Assembly	1
71-01	Winch Handle	1
71-02	Spin Knob w/ Fastener	1
71-03	Winch Guard w/ Fasteners	1
71-04	Adapter Storage Socket w/ Fasteners	1
71-08	Drill Drive Bushing Black	1
71-09	Drill Drive Bushing Chrome	1
71-10	Winch Drive Hub	1
71-11	Winch Guard Bolt Chrome	1
71-12	Winch Guard Bolt Black	1

Tools needed for Black Winch



Tools needed for Chrome Winch

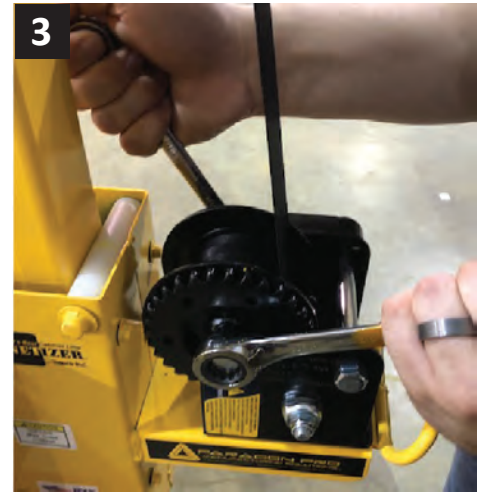
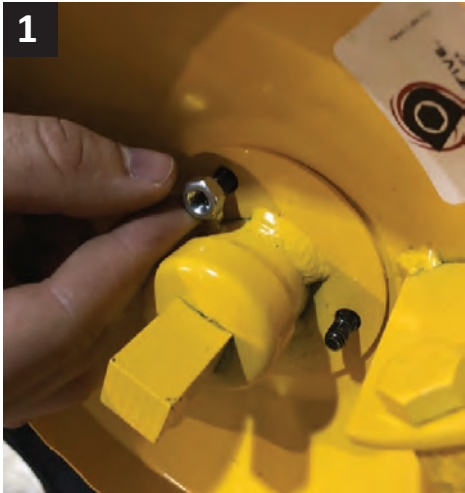


• May be needed for both Winches

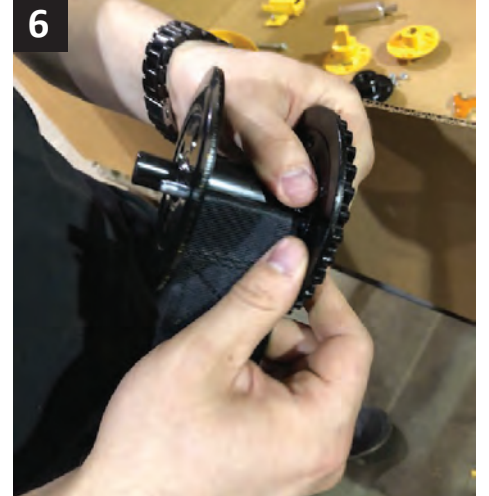


• Flat head Screwdriver

ASSEMBLY



1. Remove the nuts off the Dual Drive. Set aside the individual parts.
2. At this time check your Cabinetizer to see which Winch it has. **If Black use the Black Drill Drum Bushing. If it has a Chrome Winch then use the Yellow Drill Drum Bushing.**
3. Remove the Cabinetizer Collar Assembly and place on the floor/table to avoid damaging to the product or possible injury. Remove the spool bolt and set aside using a 7/16 wrench and an adjustable wrench.



4. Remove the Winch Strap Bolt with a 7/16 wrench and remove the strap from Winch Spool. Pay close attention to the way the bolt is installed. The bolt and strap must be reinstalled in the same direction when reattaching the strap.
5. Guide the strap through the Winch Guard opening and reattach the Winch Strap Bolt back onto the Winch.
6. Reattach the Strap to the Winch Spool, tightening just enough to secure the nut, the bolt should move freely. Do not over tighten. Roll the Winch Spool to remove excess slack.

ASSEMBLY Cont.



7. Place the Winch Guard over the Winch. The bolt and nuts used will be determined by which Winch is on the Cabinetizer.

7.1. If you have a Black Winch then you will be using the 3/8 x 5 Bolt with the 3/8 Nylock Nut and 3/8 flat washers.

7.2. If Chrome, insert the 5/16 x 5 Bolt with the 5/16 Nylock Nut.

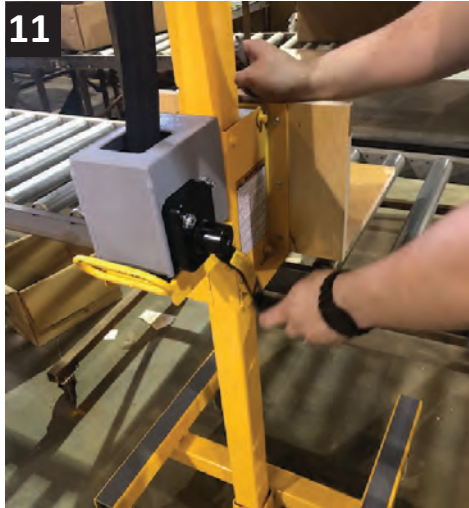


8. Your Cabinetizer should resemble Image 8 at this point.

8.1. Example: This model had a Black Winch, use the 3/8 x 5 Bolt with the 3/8 Nylock Nut and 3/8 flat washers.

9. Combine the Winch Guard to the Winch through the Winch Spool using a 7/16 Wrench and an adjustable wrench to tighten the nut. (If you have the Chrome Winch you will use a 1/2 Wrench).

ASSEMBLY Cont.



10. Remove the handle from the Black Winch using a 7/16 Wrench (or a 3/4 Wrench if you have a Chrome Winch). If needed use a flathead screwdriver and place it between the gears to remove the handle nut. Set aside the nut and spring to be reinstalled with the DrillDrive.

11. Spin the handle counter-clockwise to remove the handle.

12. When the Handle is removed, Attach the appropriate DrillDrive Bushing, as determined in Step 2 on page 2.



13. Attach the DrillDrive Winch Handle Assembly to the Drill Drum Bushing and reinstall the previously removed spring and nut.

14. Tighten the nut using a 7/16 wrench (or a 3/4 wrench if you have a Chrome winch). If needed, use a flathead screwdriver and place it between the gears to get the handle to tighten. **Do not overtighten. The nut only needs to be secured to the end of the bolt.**

15. Attach the Winch Drive Hub and tighten the 3 nuts with a 7/16 wrench.

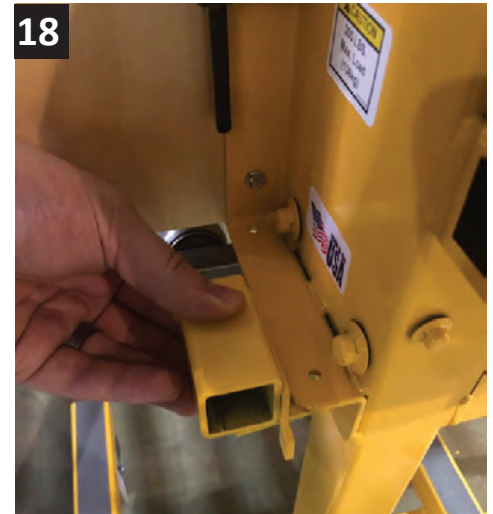
ASSEMBLY Cont.



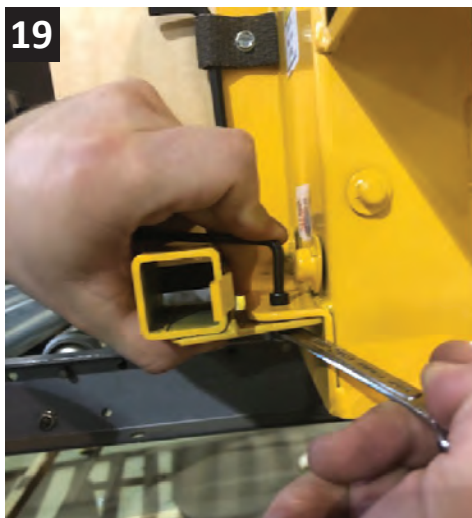
16. When the Dual Drive Winch Handle is in place, unfold the Handle and turn clockwise while holding the Collar handle with the other hand as it starts tightening.



17. Push the handle back in to its resting place when done.



18. Attach the DrillDrive Adapter and Storage Socket to the left side of the Cabinetizer as shown in the image.



19. Hand tighten the 10-24 Nut, using a 5/32 allen wrench and a 3/8 wrench.



20. Place the DrillDrive Adapter here as storage. It can also hold your drill for quick access.



21. Finally, attach the Adapter to an electric drill to raise or lower your cabinetizer. Forward, for up. Reverse, for down. **Always fold in the handle before driving the Winch with a drill.**

WARRANTY

PARAGON PRO MANUFACTURING SOLUTIONS INC LIMITED WARRANTY

TELPRO INC products manufactured by PARAGON PRO MANUFACTURING SOLUTIONS INC are warranted to be free from defects in material and workmanship under normal use for one year from date of purchase.

NOTE: The following components of the PANELLIFT® Model 439 Drywall Lift are warranted to be free from defects in material and workmanship under normal use for three years from date of purchase.

Part#	Description		
52-03	#35 chain assembly	52-05	#40 chain assembly
52-07	#50 chain assembly	52-09	1 1/4" #50 roller assembly
52-10	#Outer planet set w/ bronze	52-11	Drive assembly
52-11	#1/2" x 2 1/4" Shoulder bolt w/ fastners	52-15	Clutch assembly w/sprocket
52-16	#40 Winch drive chain		

If a TELPRO INC product is proven to be defective in material or workmanship within the covered time frame from the date of purchase, return the defective part to PARAGON PRO MANUFACTURING SOLUTIONS INC and we will either repair or replace the part at our option. We will neither assume nor authorize any other person to assume for us any other liability.

Written notice including commercial invoice detailing the nature of the defect, date of purchase, and the company from which you purchased your unit must be received and acknowledged by PARAGON PRO MANUFACTURING SOLUTIONS INC before any units may be returned. Shipping costs shall be the responsibility of the product purchaser.

This warranty shall not apply to any equipment that has been repaired or altered outside of the factory in any way so as in our judgment to affect its stability or reliability nor which has been subjected to abuse, misuse, or negligence.

PARAGON PRO MANUFACTURING SOLUTIONS INC reserves the right to make changes or improvements in design without incurring obligation to install the same on previous units.

PARAGON PRO MANUFACTURING SOLUTIONS INC shall not be liable for loss, damage, or expense directly or indirectly from use of its products, their transportation, their repair, or from any other cause. Acceptance of the manufacturer's product constitutes agreement to the terms of this warranty and further that the manufacturer shall have no liability for any special or consequential damages.

This Warranty is in lieu of all warranties express or implied.

Fill in the following information, attach a copy of your sales receipt or invoice and file in a safe place.

Date of purchase: _____/_____/_____

Name& model# _____

Serial #: _____

SAFETY INFORMATION

This product contains trace amounts of the following items which are known to cause. These chemicals are not hazardous under product's intended use. Please review CAS# for more information.

Chemical	Hazard	CAS#	% By Weight
Arsenic	Cancer	7440-38-2	Trace
Cadmium	Developmental	7440-43-9	Trace
Chromium	Cancer, Developmental	7440-47-3	Trace
Ethylbenzene	Cancer	100-41-4	Trace
Lead	Cancer	7439-92-1	Trace
Methanol	Developmental	67-56-1	Trace
Methylene Chloride (Dichloromethane)	Cancer	75-09-2	Trace
Nickel	Cancer	7440-02-0	Trace
Propylene glycol monobutyl ether	Cancer	5131-66-8	Trace
Toluene	Developmental	108-88-3	Trace
Carbon Black	Cancer	1333-86-4	Trace



Questions about assembly?

Can't find a part?

Need some other help?

Call us: **PARAGON PRO**
MANUFACTURING SOLUTIONS

1.800.448.0822

701.775.0551

We'll get you set up!