

The limited warranty set forth below is given by Precision Products, Incorporated with respect to new merchandise purchased and used in the United States, its possessions and territories.

Precision Products, Incorporated warrants the product (s) listed against defects in material and workmanship, and will at our option, repair or replace, free of charge, any part found to be defective in materials or workmanship. This limited warranty shall only apply if this product has been assembled, operated, and maintained in accordance with the owner's manual furnished with the product, and has not been subject to misuse, abuse, neglect, accident, improper maintenance, alteration, vandalism, theft, fire, water, or damage because of other peril or natural disaster.

Normal wear parts or components thereof are subject to separate terms as follows: All normal wear parts or component failures will be covered on the product for a period of one year. Parts found to be defective within the warranty period will be replaced at our expense. Our obligation under this warranty is expressly limited to the replacement or repair, at our option, of parts found to be defective in material and workmanship.

Contacting Service

Warranty parts replacements are available, only with **Proof of Purchase**, through our Customer Service Department. Call **1 (800) 225-5891**

This limited warranty does not provide coverage in the following cases:

1. Routine maintenance items such as lubricants and filters.
2. Normal deterioration of the exterior finish due to use or exposure.
3. Transportation and/or labor charges.

No implied warranty, including any implied warranty of merchantability of fitness for a particular purpose, applies after the applicable period of expressed written warranty above as to the part as identified below. No other expressed warranty whether written or oral, except as mentioned above, given by any person or entity, including a dealer or retailer, with respect to any product, shall bind Precision Products, Inc. During the period of the warranty, the exclusive remedy is repair or replacement of the product as set forth above.

The provisions as set forth in this warranty provide the sole and exclusive remedy arising from the sale.

Precision Products, Inc. will not be liable for incidental or consequential loss or damage including, without limitation, expenses incurred for substitute or replacement lawn care services or for rental expenses to temporarily replace a warranted product.

Some states do not allow the exclusion or limitation of incidental or consequential damages, or limitations on how long an implied warranty lasts, so the above exclusions or limitations may not apply to you.

During the warranty period, the exclusive remedy is replacement of the part. In no event shall recovery of any kind be greater than the amount of the purchase price of the product sold. Alteration of safety features of the product shall void this warranty. You assume the risk and liability for loss, damage, or injury to you and your property and/or to others and their property arising out of the misuse or inability to use this product.

This limited warranty shall not extend to anyone other than the original purchaser or to the person for whom it was purchased as a gift.

Local Law to this Warranty

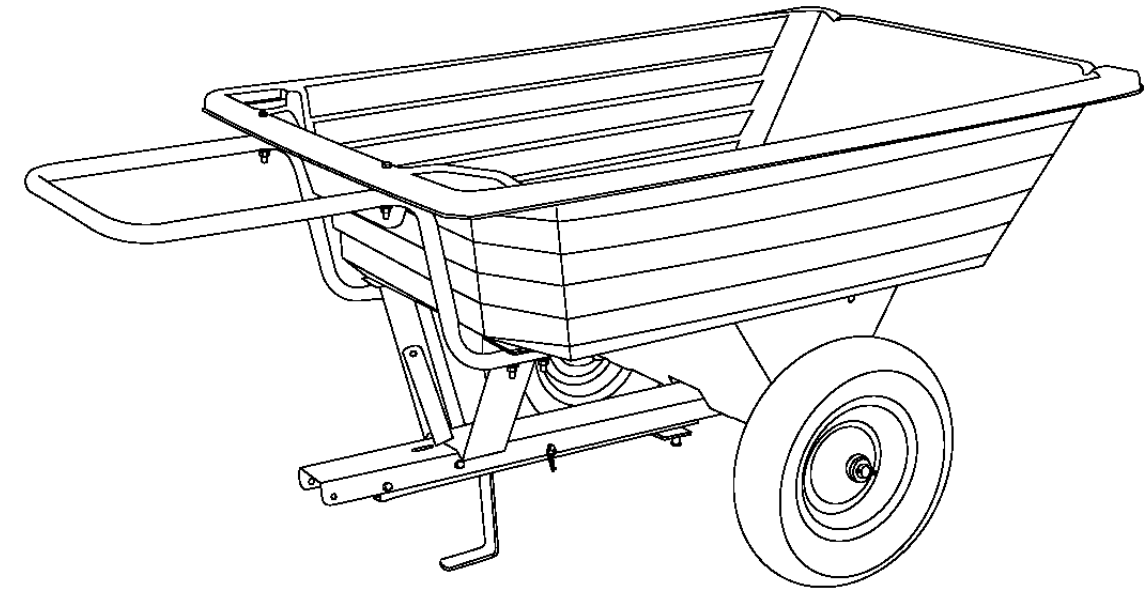
This limited warranty gives you specific legal rights, and you may also have other rights which vary from state to state.

Warranty Period

The Warranty period stated below begins with the **Proof of Purchase**. Without the proof of purchase, the Warranty period begins from the date of manufacture.

Trailer Dump Cart Warranty Period

The warranty period for this unit is as follows: All parts are cover one year from date of sale.



Tread pattern on tires may vary.

Manual Contents

Safety Instructions	2
Parts	3
Assembly	4-6
Operation	6
Maintenance	6
Warranty	8

Your New Trailer Dump Cart

Congratulations on your purchase of a new Precision Products, Inc. Push/Pull Trailer Dump Cart. Your Push/Pull Trailer Dump Cart has been engineered and built to give you the most dependable and best performing product possible.

If you experience any problem you can not easily resolve, please feel free to contact our knowledgeable and helpful customer service department toll-free at **1 (800) 225-5891**.

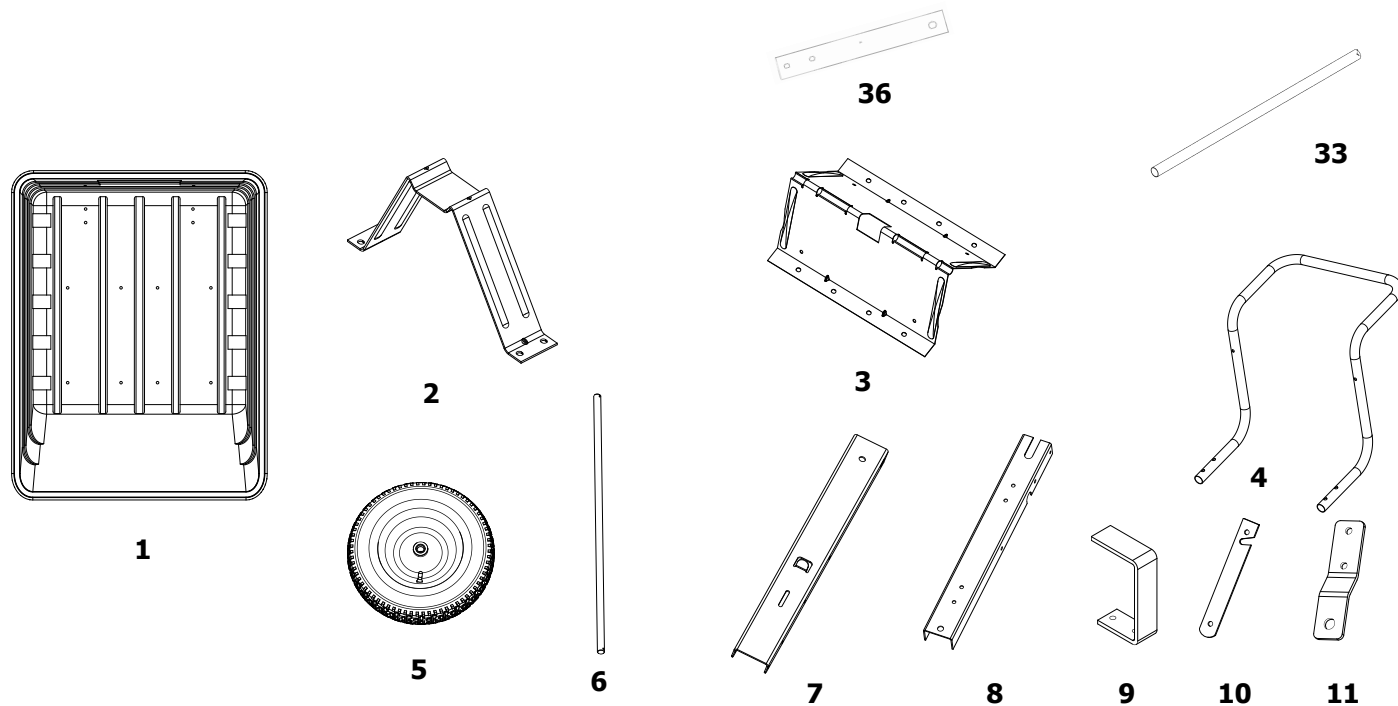
Caution: Carefully read all rules and instructions

Rules for Safe Operation

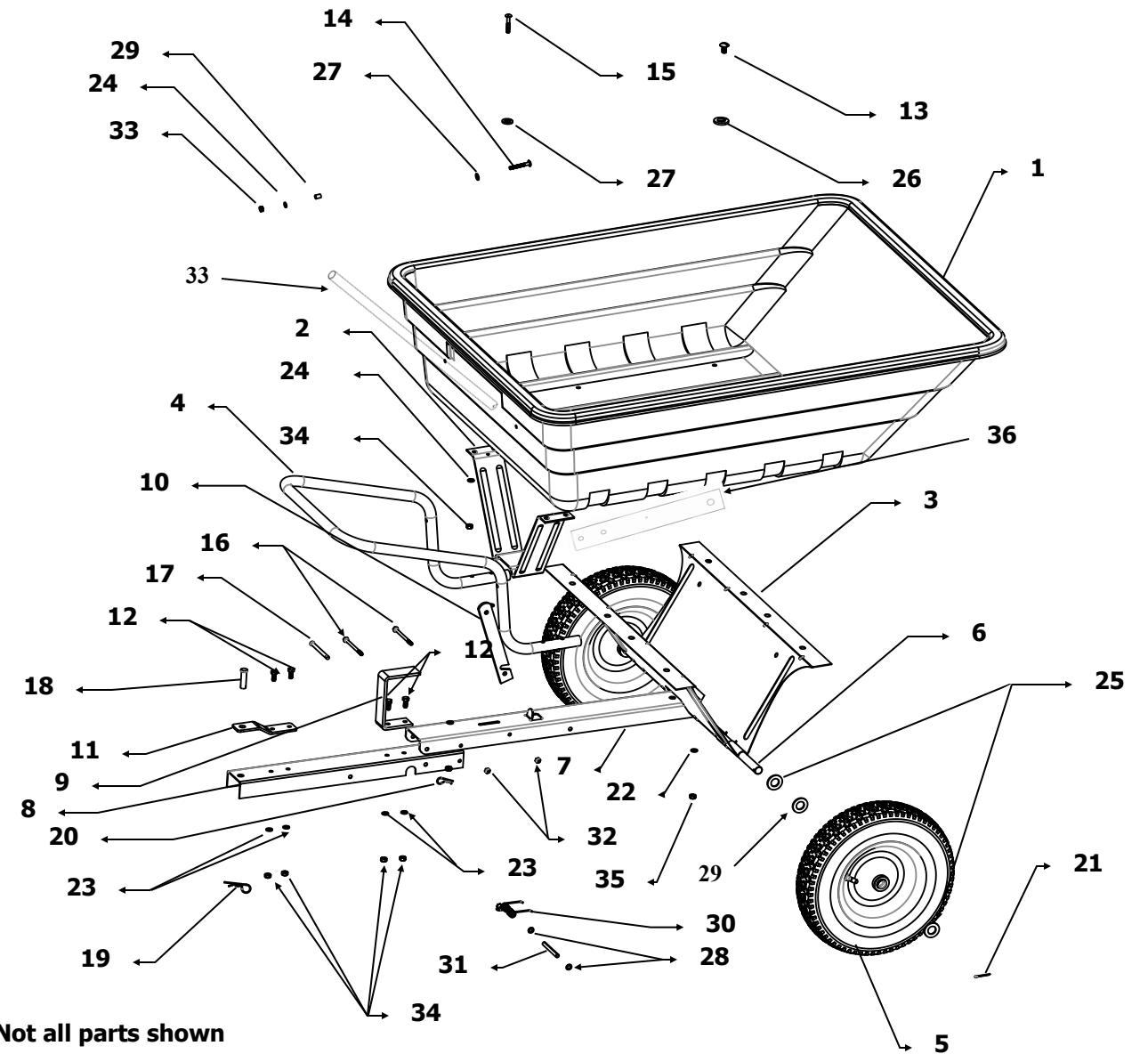
The following safety precautions are suggested. This Trailer Dump Cart is designed, engineered and tested to offer reasonably safe and effective service, provided that it is operated in strict accordance with these instructions. Failure to do so may result in personal injury. Always observe the rules of safe operation. Please read and retain this manual.

- Read and understand your tractor's owner's manual and towing safety rules, know how to operate your tractor before using any attachment.
- Do not allow anyone to ride or sit on tow behind equipment during operation.
- Be alert for holes in the terrain and other hazards. This could cause you to lose control of the cart and lawn tractor.
- Follow maintenance and lubrication instructions as outlined in this manual.
- Tractor braking and stability may be affected with the attachment of this unit. Be aware of changing conditions on slopes. Refer to safety rules in your tractor owner's manual concerning safe operation on slopes. **Stay Off Steep Slopes.**
- Always operate up and down a slope, never across the face of a slope.
- Do not drive close to creeks, ditches or public highways.
- Always wear substantial footwear. Do not wear loose fitting clothing that may get caught in moving parts.
- Avoid extremely sharp turns.
- Follow the maintenance instructions as outlined in this owner's manual.
- Do not exceed maximum towing speed of 4 M.P.H.
- Maximum Carrying Capacity 650 Lbs.
- **Warning of danger of improper use of the Trailer Dump Cart.** This unit is intended for use only with Riding Mowers or Garden Tractors. It is definitely not for Highway use, being pulled at high speeds, or transporting passenger(s) of any sort. Such use could result in injuries for which we cannot be held responsible.

Carton Contents



2



Not all parts shown

Ref No.	Part No.	Qty.	Description
1	4888	1	Body
2	4630R	1	Pedestal
3	4708R	1	Undercarriage
4	4894R	1	Handle
5	5547A	2	Wheels
6	7255BS	1	Axle
7	4650R	1	Long Tow Bar
8	4648R	1	Short Tow Bar
9	4617P	1	Leg
10	1265P	1	Latch
11	1243P	1	Clevis Plate
12	1586	4	5/16" x 3/4" Truss Head Bolt
13	1974	8	3/8" x 1-1/4" Hex Head Bolt
14	2179	2	1/4" x 3" Hex Head Bolt
15	4041	4	5/16" x 2" HexHead Bolt
16	1645	2	1/4" x 3-1/2" HH Bolt Grade8
17	4619	1	5/16" x 3-1/2" Clevis Pin
18	1840	1	1/2" x 1-3/4" Clevis Pin

Ref No.	Part No.	Qty.	Description
19	1042	1	#14 Hitch Pin Clip
20	2455	1	#203 Hitch Pin Clip
21	1262	2	1/8" x 1-1/4" Cotter Pin
22	1274	8	3/8" Lock Washer
23	1276	4	5/16" Lock Washer
24	1749	4	5/16" NyLock Nut
25	1264	4	3/4" Flat Washer
26	1278	8	3/8" Flat Washer
27	1044	4	5/16" Flat Washer
28	1817	2	1/4" Flat Washer
29	4899	2	1" x 1" Spacer *
30	4497	1	Spring
31	4468	1	1/4" x 2.75" Metal Spacer
32	1558	4	1/4" Nylock Nut
33	4893TB	1	Cross Tube
34	1275	4	5/16" Hex Head Nut
35	1273	8	3/8" Hex Head Nut
36	4892TB	2	Reinforcing Strip

(* May receive four 1" x 1/2 Spacers-Part # 4295)

11

11. To convert your Trailer from Pull unit to a push unit, remove the #203 Hitch Pin Clip from the side of Tow Bar. Remove the 5/16" x 3-1/2" Clevis Pin, turn the Short Tow Bar around until it rests inside of the Long Tow Bar, insert the Clevis Pin into the fourth hole from the front of the Long Tow Bar and secure with the Hitch Pin Clip. See Figure 10.

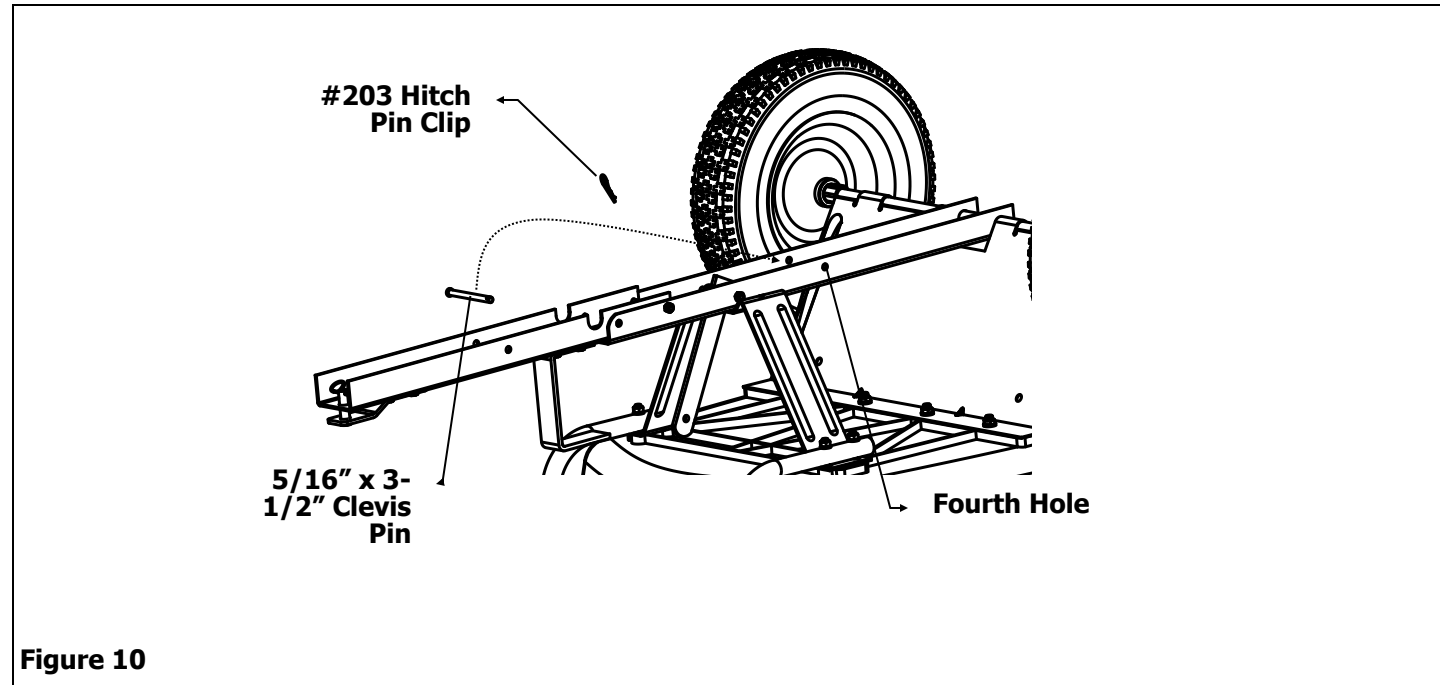


Figure 10

Operation

- TO DUMP - Pull Latch toward lawn tractor and Cart Body will tilt back to dump position.
- TO RETURN TO PULLING POSITION - Push down on front edge of Cart Body until Latch engages and secures to Tow Bar.
- Tractor speed should be governed by weight of load. The heavier the load, the slower the speed for safe operation.

Maintenance Instructions

- Keeping the cart clean and dry will prolong the unit's life.
- Grease Wheels at regular intervals, at least once every six months, more frequently if used regularly.
- Should rust develop, sand lightly then paint area with enamel paint.
- Check tire pressure at regular intervals. Proper inflation will prolong the life of tires (see side of tire for inflation amount).

Parts and Support

STOP *Please do not return this product to store prior to contacting Precision.*

At Precision Products, Inc. our goal is to deliver quality, value and outstanding service. If for any reason our product does not meet your expectations, please contact us and we will take care of any problem you may have with this unit.

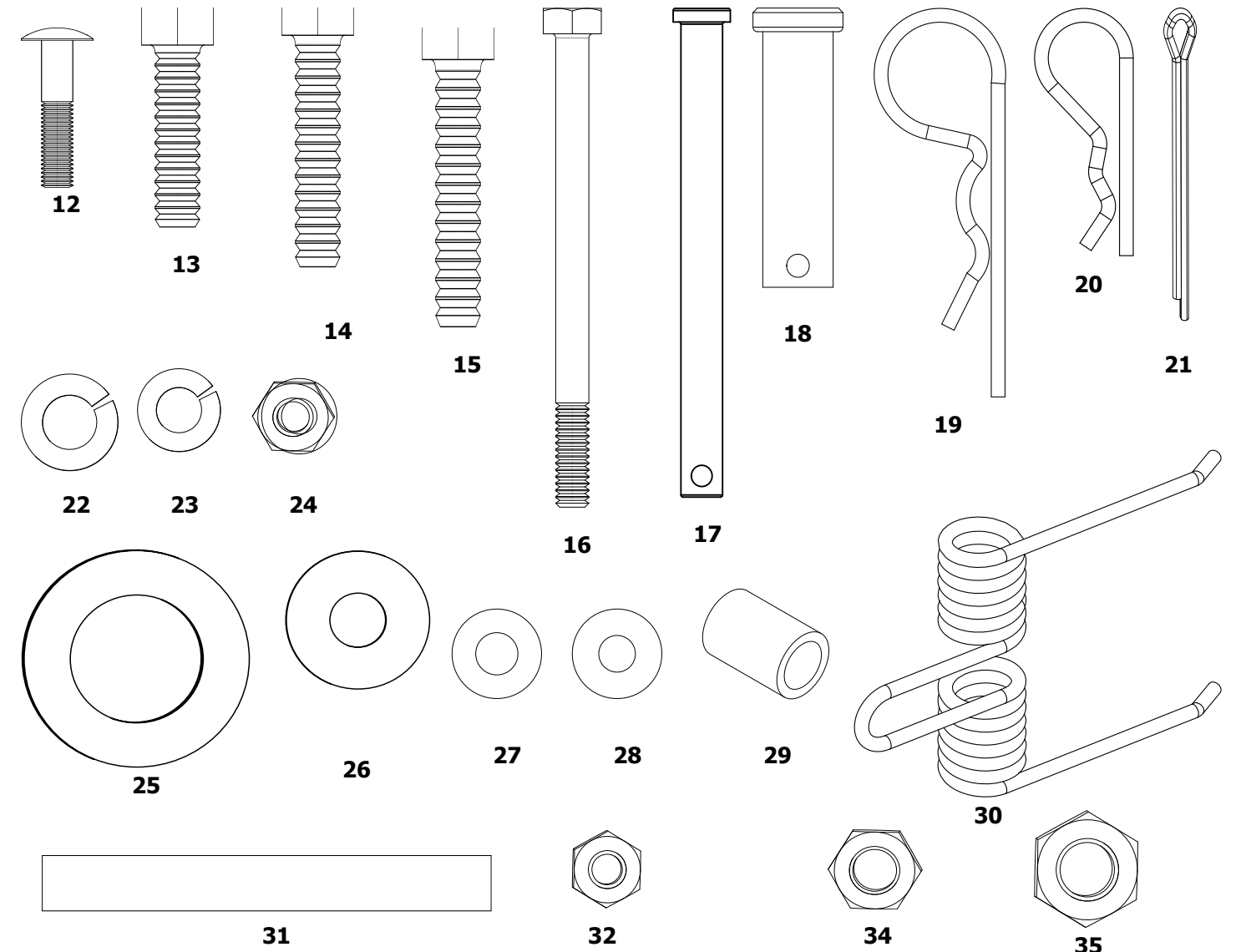
When ordering replacement parts please have the model number, part description, part number, inspector number and date on carton, available so that we can best serve you.

1 (800) 225-5891

www.precisionprodinc.com

**Precision Products Inc.
316 Limit St.
Lincoln IL 62656**

Not Shown Full Size



Ref.	Qty.	Description
1	1	Body
2	1	Pedestal
3	1	Undercarriage
4	1	Handle
5	2	Wheels
6	1	Axle
7	1	Long Tow Bar
8	1	Short Tow Bar
9	1	Leg
10	1	Latch
11	1	Clevis Plate
12	4	5/16" x 3/4" Truss Head Bolt
13	8	3/8" x 1" Hex Head Bolt
14	2	1/4" x 3" Hex Head Bolt
15	4	5/16" x 2" Hex Head Bolt
16	2	1/4" x 3-1/2" Hex Head Bolt
17	1	5/16" x 3-1/2" Clevis Pin
18	1	1/2" x 1-3/4" Clevis Pin

Ref.	Qty.	Description
19	1	#14 Hitch Pin Clip
20	1	#203 Hitch Pin Clip
21	2	1/8" x 1-1/4" Cotter Pin
22	8	3/8" Lock Washer
23	4	5/16" Lock Washer
24	4	5/16" NyLock Nut
25	4	3/4" Flat Washer
26	8	3/8" Flat Washer
27	4	5/16" Flat Washer
28	2	1/4" Flat Washer
29	2	1" x 1" Spacer
30	1	Spring
31	1	1/4" x 2.75" Metal Spacer
32	4	1/4" Nylock Nut
33	1	Cross Tube
34	4	5/16" Hex Head Nut
35	8	3/8" Hex Head Nut
36	2	Reinforcing Strip

Assembly Instructions

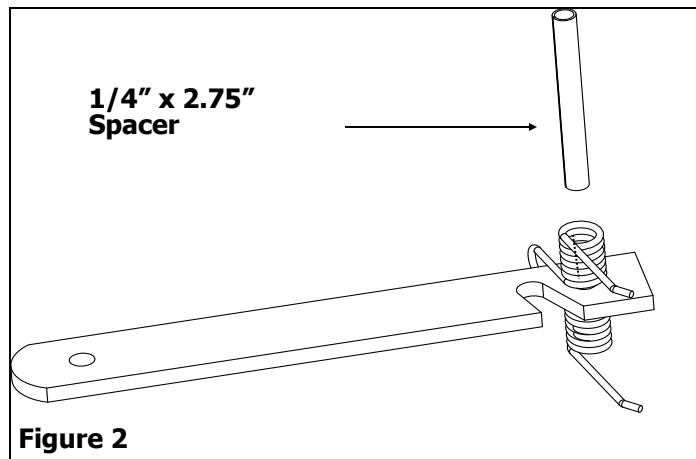
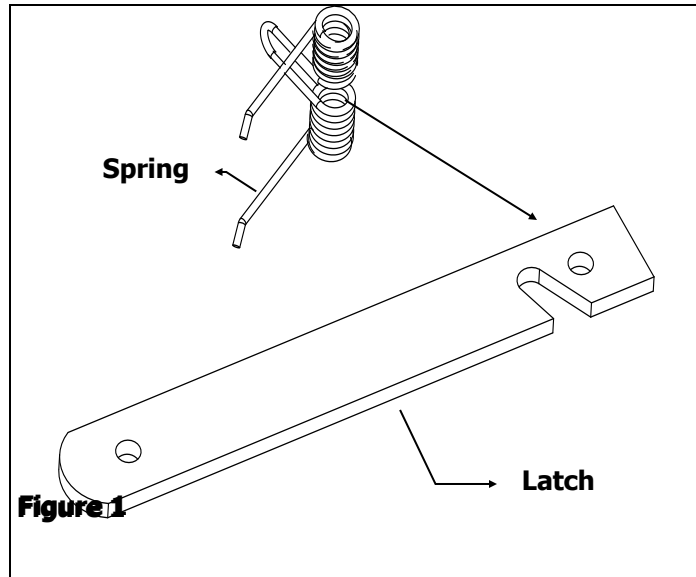
Tools Needed For Cart Assembly

- (2) 5/16" Wrenches
- (2) 3/8" Wrenches
- (1) Screwdriver

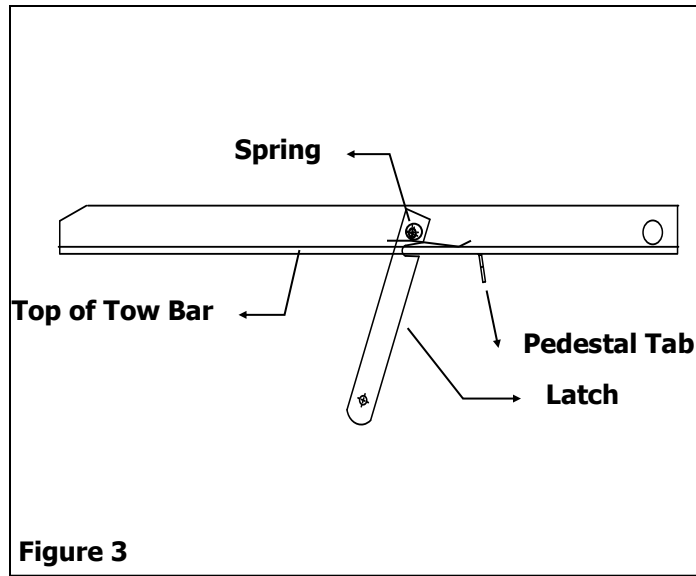
Remove from Carton

Remove all parts and hardware packages from the carton. Lay out all parts and hardware and identify them using the illustrations pages 2 and 3.

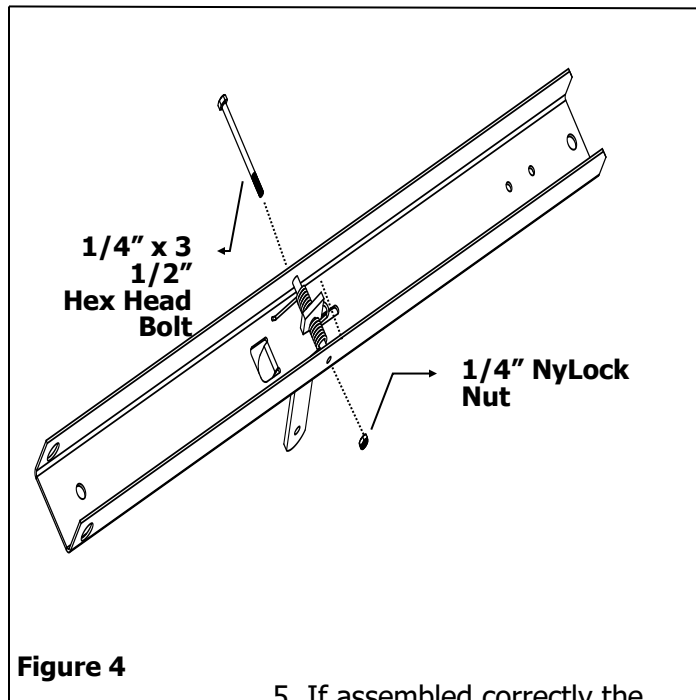
1. Slide Spring over the Latch Handle as shown in Figure 1.
2. Slide the 1/4" x 2.75" Spacer through the Spring and Latch as shown in Figure 2.



3. Slide the Latch, Spring and Spacer through the Tow Bar. This will cause the Spring to open. See Figure 3.

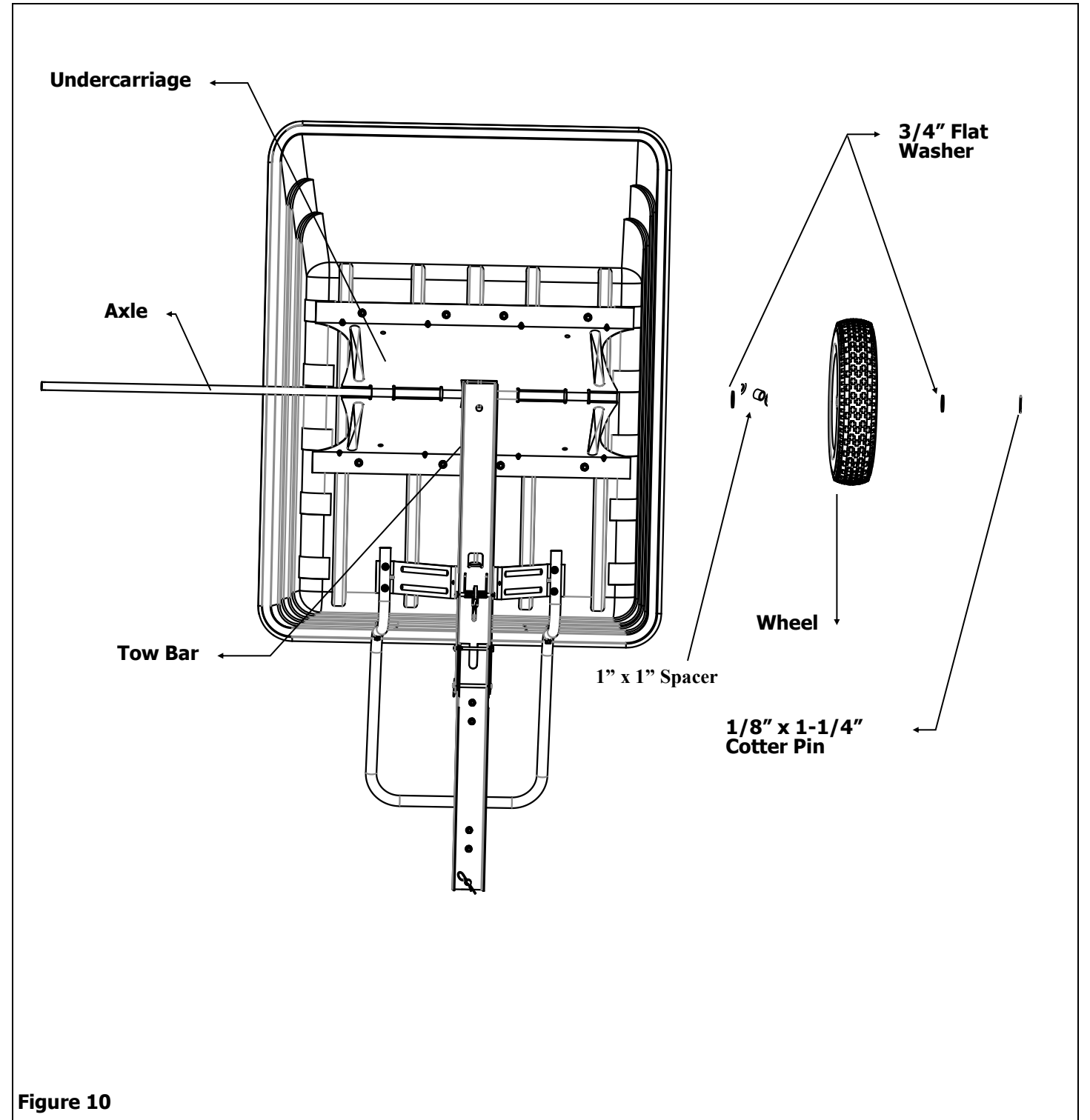


4. Slide 1/4" x 3-1/2" Hex Head Bolt through Spacer and secure with a 1/4" Nylock Nut. See Figure 4.



5. If assembled correctly the Latch should be forced toward the back of the Tow Bar by the spring.

11. Slide Axle through Undercarriage and Tow Bar. Center Axle, place one 3/4" Flat Washer, one 1" x 1" Spacer onto the Axle followed by Wheel, place another 3/4" Flat Washer onto the Axle and secure with a 1/8" x 1-1/4" Cotter Pin. Repeat process on other side. See Figure 10.



10. Insert a 1/4" x 3" Hex Head Bolt into 1/4" Flat Washer, into hole in the top of the body, through Cross Tube then insert bolts into Handle. Secure with a 1/4" Nylock Nut. See Figure 9.

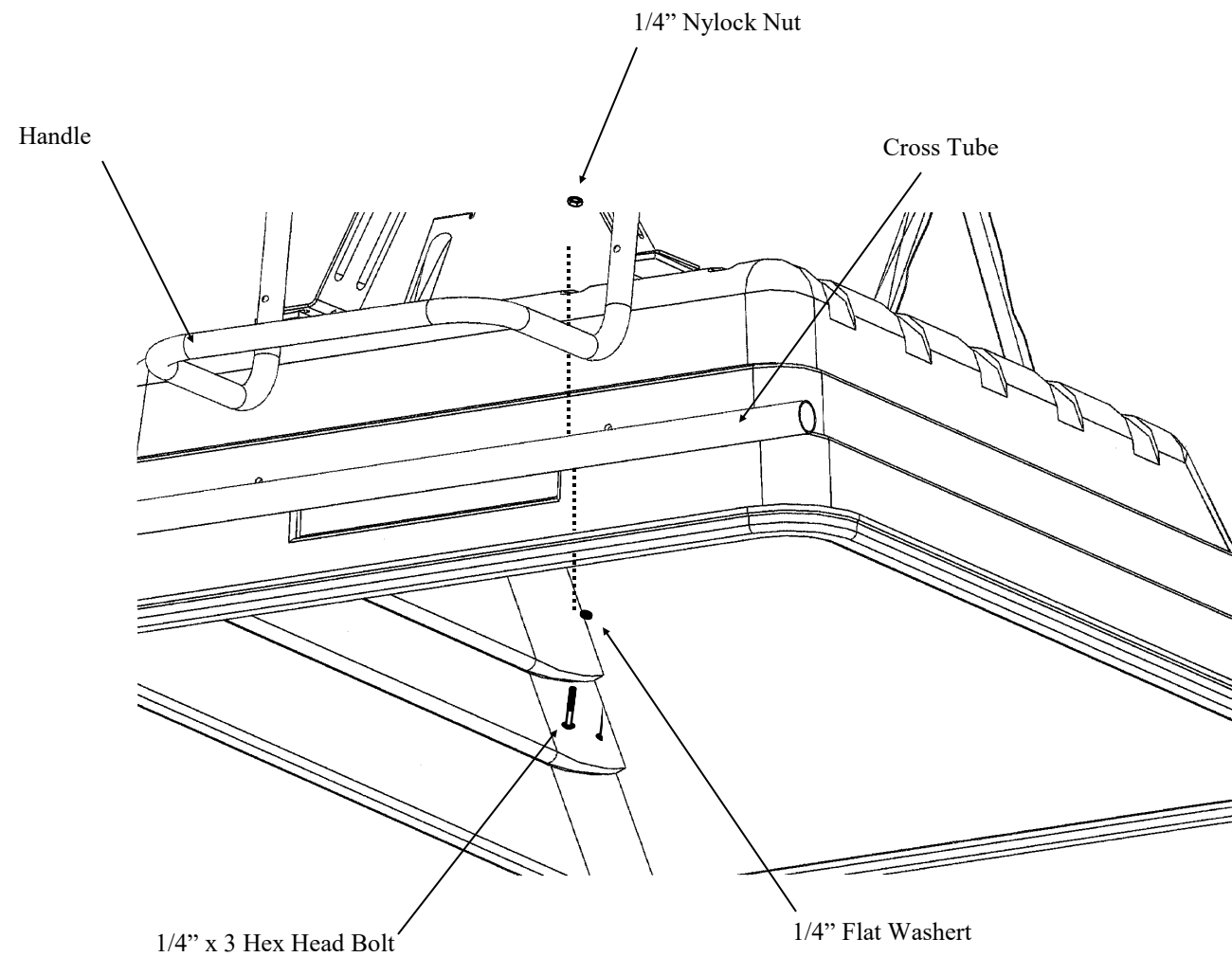


Figure 9

6. The Leg and Clevis Plate are both attached to the Short Tow Bar, using two 5/16" x 3/4" Truss Head Bolts, two 5/16" Lock Washers and two 5/16" Hex Head Nuts. Insert 1/2" x 1-3/4" Clevis Pin into the 1st (large hole) in the Clevis Plate and secure with #14 Hitch Pin Clip. See Figure 5.
 7. The Long Tow Bar and the Short Tow Bar are attached by inserting a 1/4" x 3-1/2" Hex Head Bolt

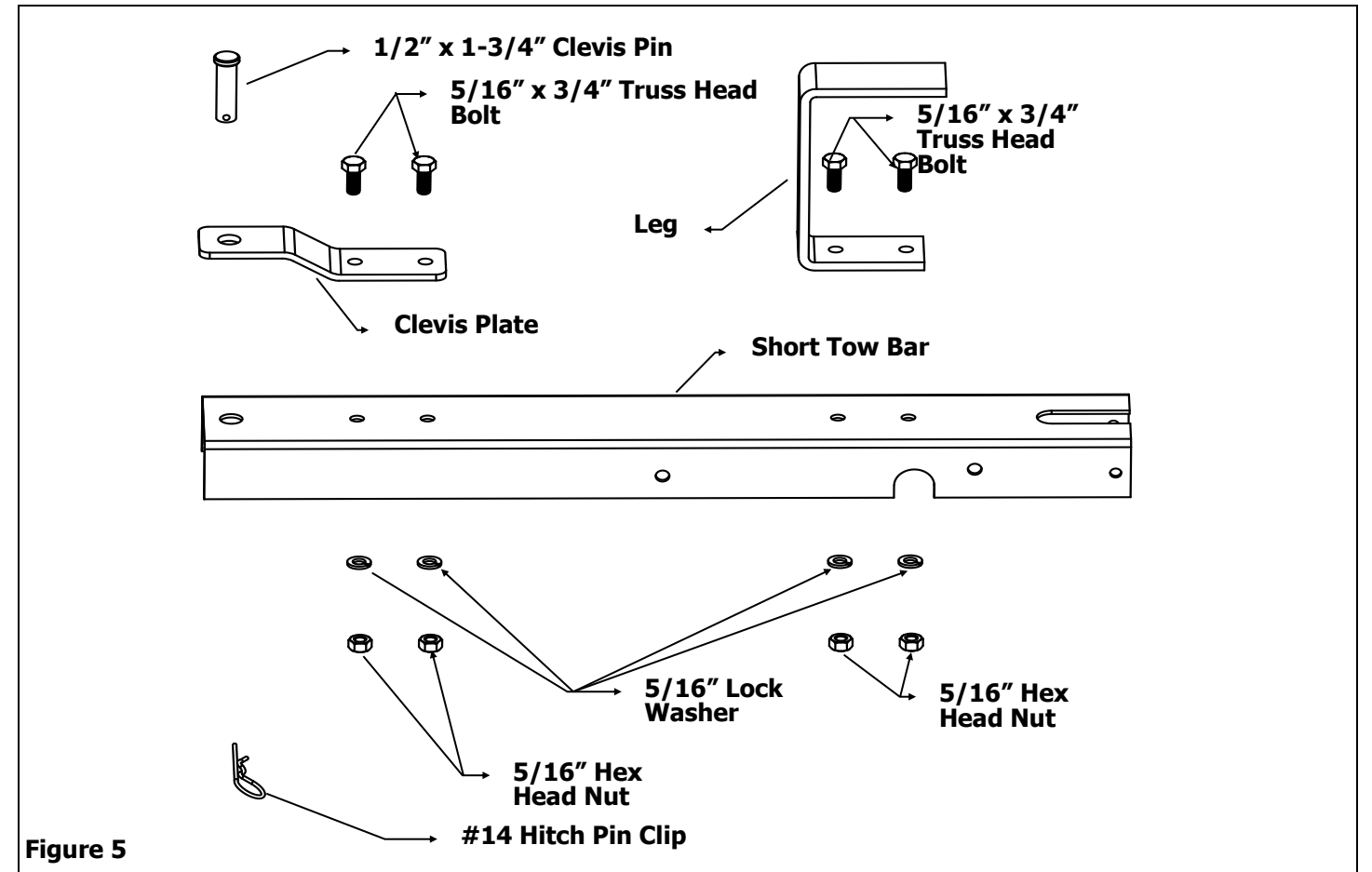


Figure 5

through the second hole from the front on the Long Tow Bar and the last hole on the Short Tow Bar. Secure with a 1/4" Nylock Nut (**Only tighten until nut is touching Tow Bar wall**). Insert the 5/16" x 3-1/2" Clevis Pin into the first hole of the Long Tow Bar and the middle hole of the Short Tow Bar and secure with the #203 Hitch Pin Clip. See Figure 6.

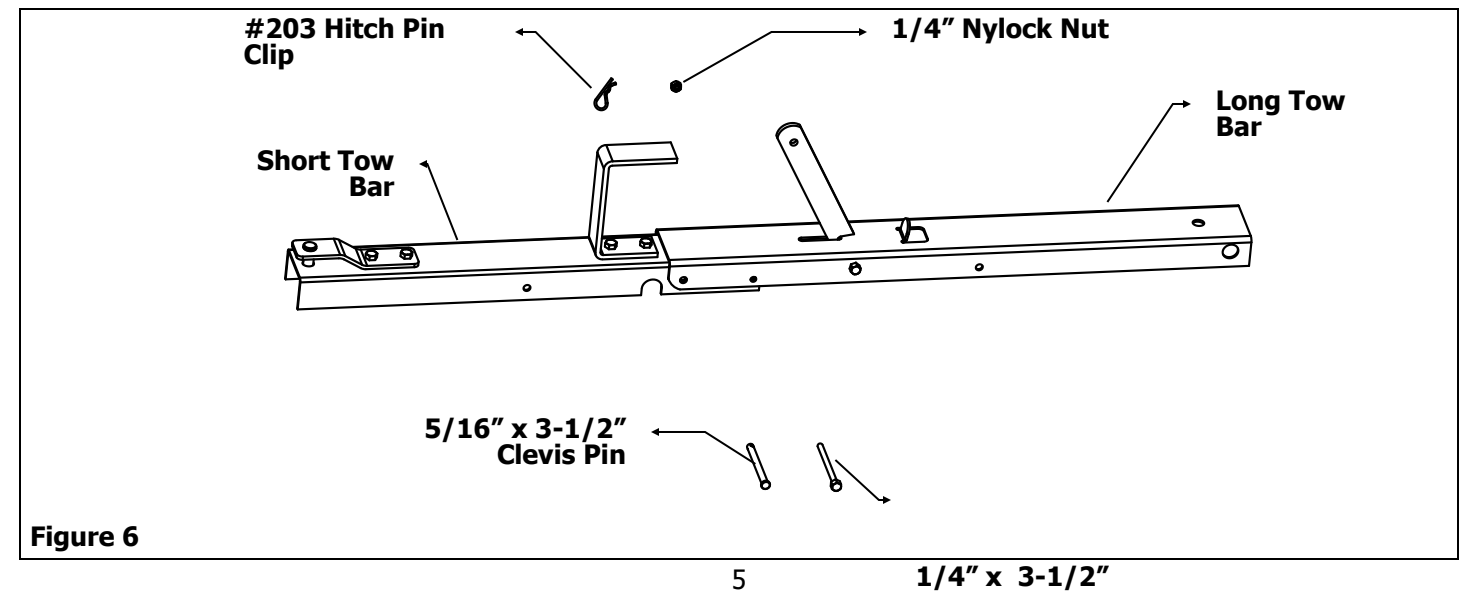


Figure 6

8. Attach Undercarriage Support and Reinforcing Strip to the Body using eight 3/8" x 1" Hex Head Bolts, inserting them into 3/8" Flat Washers through the holes in the Body, Undercarriage, then through Reinforcing Strip and secure with 3/8" Lock Washers and 3/8" Hex Head Nuts. of See Figure 7.

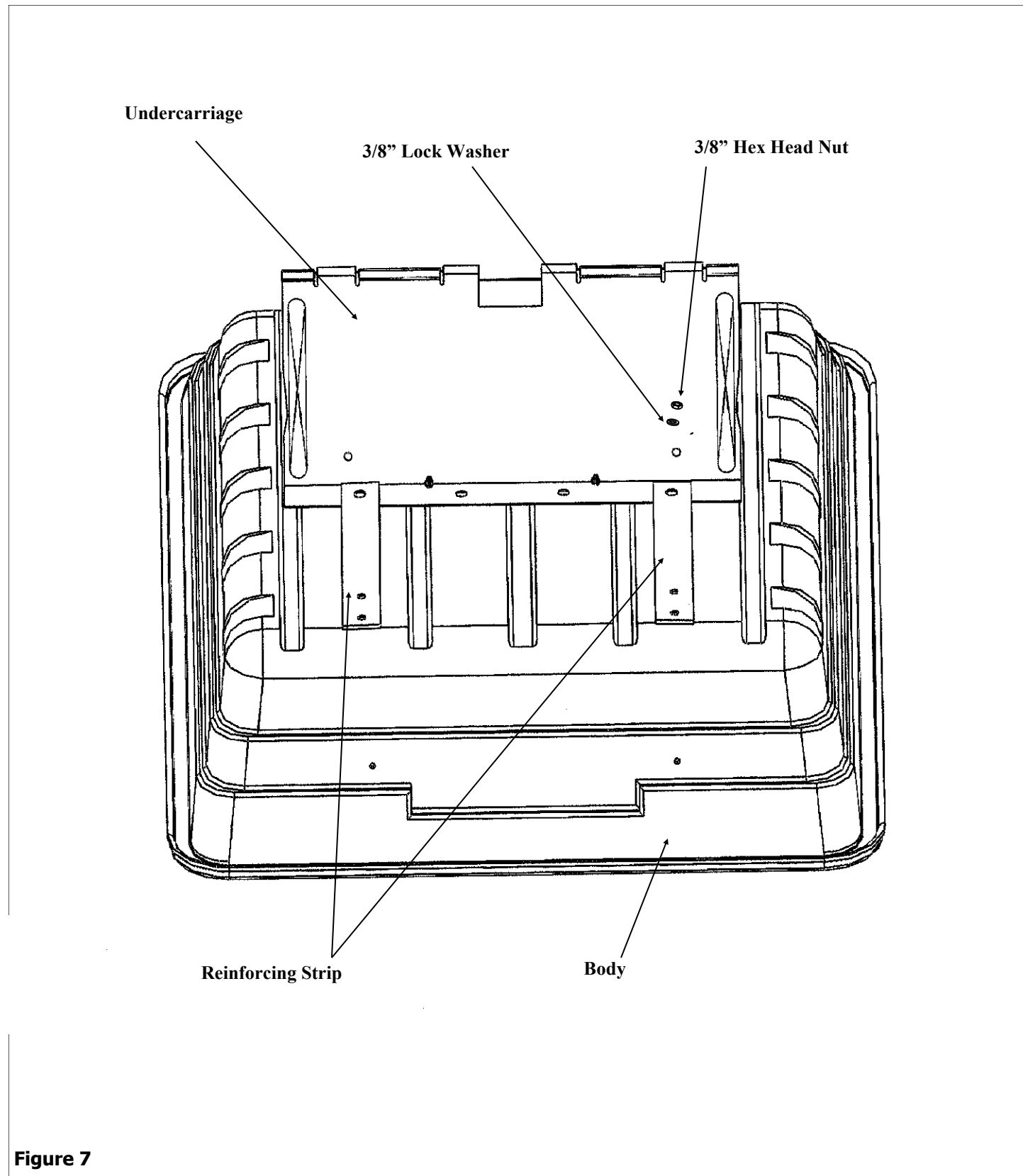


Figure 7

9. Attach the Pedestal on top of Reinforcing Strip and Handle using four 5/16" x 2" Hex Head Bolts, the bolts go through a 5/16" Flat Washer then into the front holes in the Body, through the holes in the Pedestal then through the Handle. Secure with 5/16" Nylock Nuts. See Figure 8.

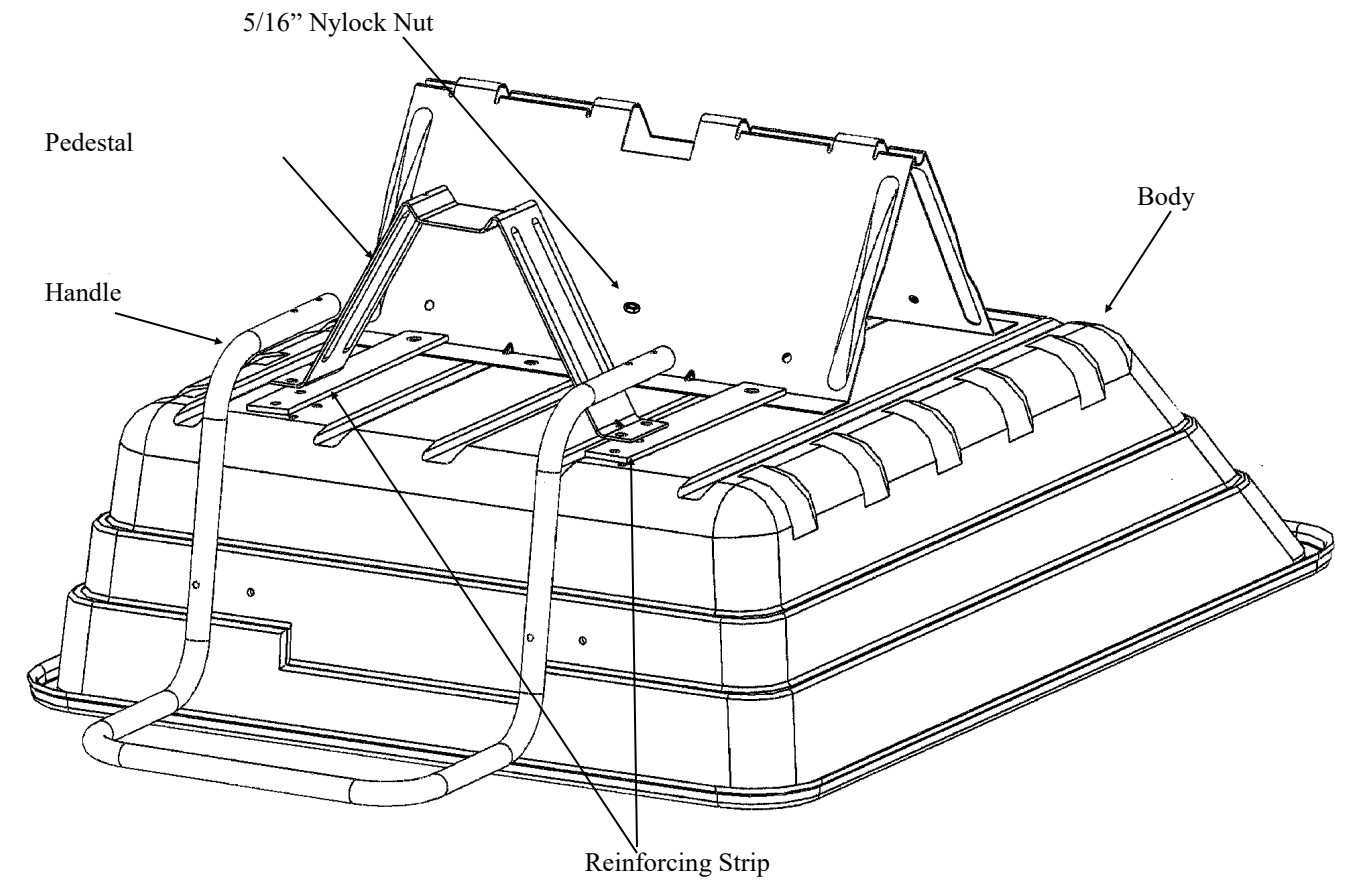


Figure 8