



**Vestil Manufacturing Company**  
 2999 North Wayne Street, P.O. Box 507, Angola, IN 46703  
 Telephone: (260) 665-7586 -or- Toll Free (800) 348-0868  
 Fax: (260) 665-1339  
[www.vestil.com](http://www.vestil.com)    [info@vestil.com](mailto:info@vestil.com)

## SBM-Series Economy or Adjustable Spreader Beams



**ECONOMY MODELS**



**ADJUSTABLE MODELS**

### Receiving Instructions

After delivery, remove the packaging from the product. Inspect the product closely to determine whether it sustained damage during transport. If damage is discovered, record a complete description of it on the bill of lading. If the product is undamaged, discard the packaging.

**NOTE:** The end-user is solely responsible for confirming that product design, use, and maintenance comply with laws, regulations, codes, and mandatory standards applied where the product is used.

### Technical Service & Replacement Parts

For answers to questions not addressed in these instructions and to order replacement parts, labels, and accessories, call our Technical Service and Parts Department at (260) 665-7586. The department can also be contacted online at <https://www.vestil.com/page-parts-request.php>.

### Electronic copies of Instruction Manuals

Additional copies of this instruction manual may be downloaded from <https://www.vestil.com/page-manuals.php>.

<b>Table of Contents</b>		<b>Page</b>
Signal Words.....		2
Safety Instructions.....		2
SBM-10 Economy Beams Exploded View, Bill of Materials, & Specifications.....		3
SBM-20 Economy Beams Exploded View, Bill of Materials, & Specifications.....		4
SBM-40 Economy Beams Exploded View, Bill of Materials, & Specifications.....		5
SMB-60 Economy Beams Exploded View, Bill of Materials, & Specifications.....		6
SBM-25 Adjustable Beam Exploded View, Bill of Materials, & Specifications.....		7
SBM-40 Adjustable Beam Exploded View, Bill of Materials, & Specifications.....		8
SBM-80 Adjustable Beam Exploded View, Bill of Materials, & Specifications.....		9
National Standards.....		10
Record of Satisfactory Condition.....		10
Load Tests.....		10
Specifications.....		10
Using an Economy Model Lifting Beam.....		11
Using an Adjustable Model Lifting Beam.....		12
Inspections & Maintenance.....		13
Labeling Diagram.....		14
Limited Warranty.....		15

## SIGNAL WORDS

SIGNAL WORDS in this manual draw the reader's attention to important safety-related messages.

<b>⚠ DANGER</b>	<b>Identifies a hazardous situation which, if not avoided, <u>WILL</u> result in DEATH or SERIOUS INJURY. Use of this signal word is limited to the most extreme situations.</b>
<b>⚠ WARNING</b>	<b>Identifies a hazardous situation which, if not avoided, <u>COULD</u> result in DEATH or SERIOUS INJURY.</b>
<b>⚠ CAUTION</b>	<b>Indicates a hazardous situation which, if not avoided, <u>COULD</u> result in MINOR or MODERATE injury.</b>
<b>NOTICE</b>	<b>Identifies practices likely to result in product/property damage, such as operation that might damage the product.</b>

## SAFETY INSTRUCTIONS

Vestil strives to identify foreseeable hazards associated with the use of its products. Material handling is dangerous and no manual can address every conceivable risk. The end-user must exercise sound judgment at all times. ASME B30.20 is a US national standard that applies to below-the-hook (BTH) lifting devices. If your DRUM-LUG lifter will be used as a BTH lifting device, then you should acquire a copy of the current revision of ASME B30.20 and apply all relevant instructions for users of mechanical BTH lifting devices.

### ⚠ WARNING

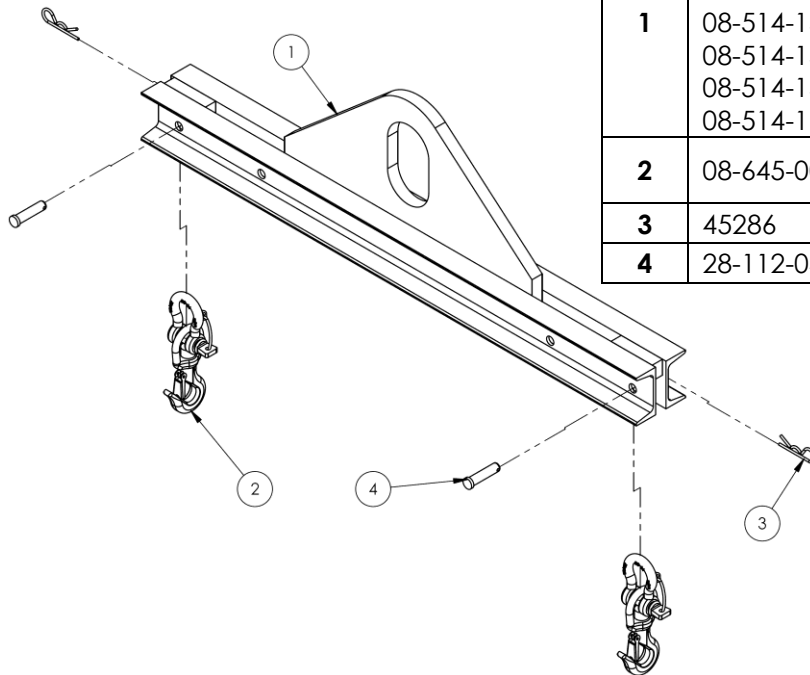
Material handling is dangerous and could result in serious personal injuries or death.

- **Read and understand the entire manual before using or servicing this lifter.** DO NOT use this device until you read and understand the entire instruction manual. Read the manual to refresh your understanding of proper use and maintenance procedures.
- This lifting device must only be used by designated persons and lifting device inspectors. Maintenance personnel should only use this device when necessary to perform their duties.
- DO NOT use this lifter if it is damaged, malfunctioning, or missing parts.
- DO NOT modify the product in any way without first obtaining written approval from Vestil. Unapproved modifications automatically void the [LIMITED WARRANTY](#) and might make the product unsafe to use.
- Only attach the lifter to a properly functioning safety hook, i.e. a hook with a spring latch.
- DO NOT remove or obscure any label. Confirm the placement and legibility of all labels as shown in the [LABELING DIAGRAM](#) on p. 14. DO NOT use this device UNLESS all labeling is readable and undamaged.
- Inspect the lifter before each use. See [INSPECTIONS AND MAINTENANCE](#) on p. 13.
- Review safety messages in the manuals for your crane, trolley, hoist, rigging, and all other devices used in conjunction with this spreader beam.
- Tighten shackle pins before each use. See "Hook with Shackle" Exploded Views on [p. 3, 4, 5, & 6](#).
- Make sure your travel path is clear before picking up a load.
- DO NOT use this lifter to move a load item if the item does not balance when it is elevated. The beam should be horizontal/level when the load is elevated.
- DO NOT lift more than 1 item at a time.
- DO NOT lift people. This device must only be used to lift materials.
- Center the hoist above the load item before connecting it to a load. Centering minimizes load swing as the load lifts off of the ground. DO NOT side load the hoist/lifter.
- DO NOT sit, or ride, on the load item or the lifter.
- DO NOT exceed the rated load/capacity of your lifter. Capacity figures are provided in [Specifications](#) tables on [p. 3, 4, 5, 6, 7, 8](#), and [9](#), as well as on label 1153. See [LABELING DIAGRAM](#) on p. 14.
- Carefully eliminate slack in the hoist line and rigging by slowly raising the load. Stop just a few inches above ground to determine whether the load is stable in its rigging. Lift and lower loads slowly and steadily.
- DO NOT lift a load higher than necessary. See [USING AN ECONOMY LIFTING BEAM](#) on p. 11 or [USING AN ADJUSTABLE LIFTING BEAM](#) on p. 12. Only elevate loads as high as necessary to move them.
- Avoid contact with the load item while it is suspended. DO NOT get in front of or behind a suspended load. Avoid putting your feet and other parts of your body beneath the load item.
- NEVER lift material over yourself or other people.
- Watch the load carefully while lifting and moving it. The load could swing or spin while elevated.
- DO NOT leave a suspended load unattended.
- DO NOT pull, drag, or slide loads with the lifter.

# EXPLODED VIEW & BILL OF MATERIALS: SBM-10 SERIES ECONOMY BEAMS

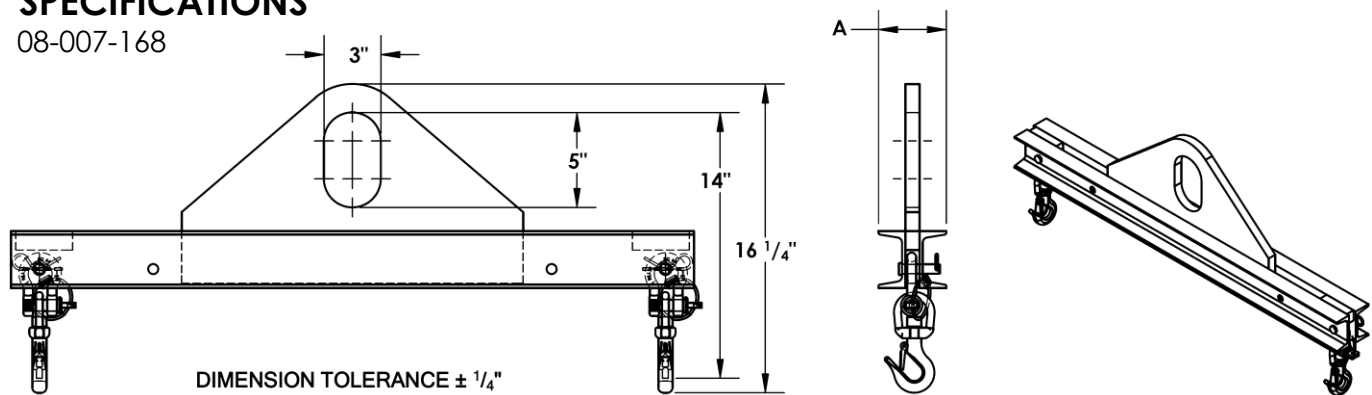
08-006-168

Item	Part no.	Description	Qty.
1	08-514-142	Weldment, spreader beam	1
	08-514-146	SBM-10-3	1
	08-514-150	SBM-10-4	1
	08-514-154	SBM-10-6	1
	08-514-158	SBM-10-8	1
	08-514-162	SBM-10-10	1
	08-514-162	SBM-10-12	1
2	08-645-004	Subassembly, hook with shackle, 0.5 ton	2
3	45286	#11 hitch pin clip, 1/8"x2 <sup>5</sup> /8"	2
4	28-112-040	Clevis pin, 1/2"x2"	2



## SPECIFICATIONS

08-007-168



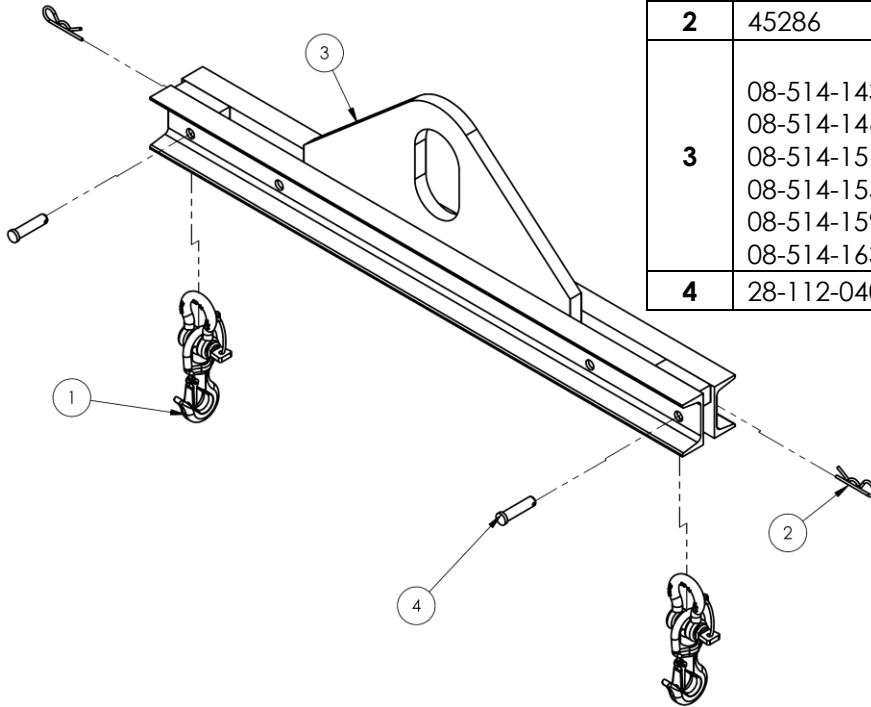
DIMENSION TOLERANCE ± 1/4"

Model	A	Minimum spread	Maximum spread	Capacity	Net weight
<b>SBM-10-3</b>	3 <sup>9</sup> / <sub>16</sub> " 9.0cm	21" 53.3 cm	33" 83.8 cm	1,000 lb. 454.5 kg	56 lb. 25.5 kg
<b>SBM-10-4</b>	3 <sup>9</sup> / <sub>16</sub> " 9.0cm	33" 83.8 cm	45" 114.3 cm	1,000 lb. 454.5 kg	64 lb. 29.1 kg
<b>SBM-10-6</b>	3 <sup>9</sup> / <sub>16</sub> " 9.0cm	45" 114.3 cm	69" 175.3 cm	1,000 lb. 454.5 kg	82 lb. 37.3 kg
<b>SBM-10-8</b>	3 <sup>9</sup> / <sub>16</sub> " 9.0cm	69" 175.3 cm	93" 236.2 cm	1,000 lb. 454.5 kg	98 lb. 44.5 kg
<b>SBM-10-10</b>	3 <sup>15</sup> / <sub>16</sub> " 10.0cm	93" 236.2 cm	117" 297.2 cm	1,000 lb. 454.5 kg	140 lb. 63.6 kg
<b>SBM-10-12</b>	3 <sup>15</sup> / <sub>16</sub> " 10.0cm	117" 297.2 cm	141" 358.1 cm	1,000 lb. 454.5 kg	162 lb. 73.6 kg

# EXPLODED VIEW & BILL OF MATERIALS: SBM-20 SERIES ECONOMY BEAMS

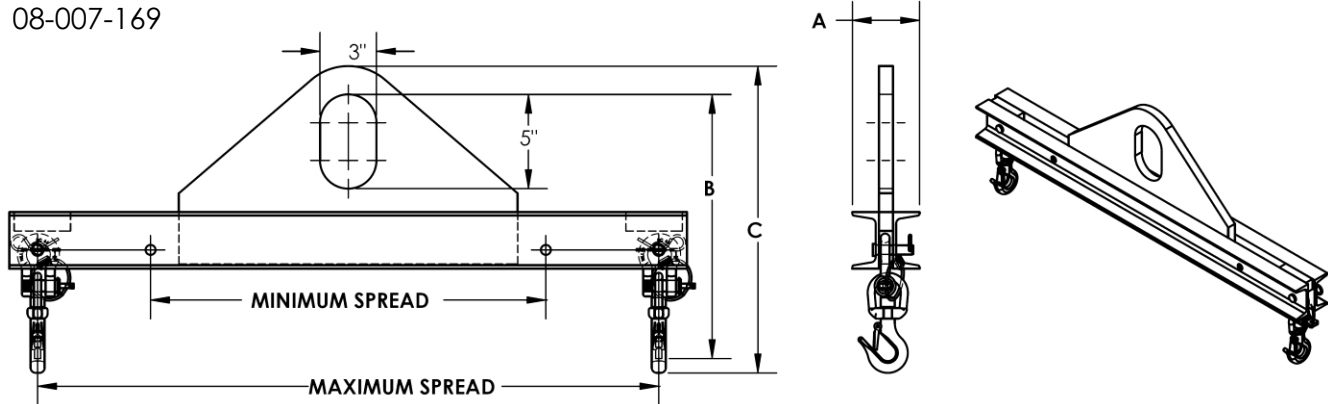
08-006-169

Item	Part no.	Description	Qty.
1	08-645-004	Subassembly, hook with shackle, 0.5 ton	2
2	45286	#11 hitch pin clip, 1/8"x2 <sup>5</sup> / <sub>8</sub> "	2
3	08-514-143	Weldment, spreader beam SBM-20-3	1
	08-514-146	Weldment, spreader beam SBM-20-4	1
	08-514-151	Weldment, spreader beam SBM-20-6	1
	08-514-155	Weldment, spreader beam SBM-20-8	1
	08-514-159	Weldment, spreader beam SBM-20-10	1
	08-514-163	Weldment, spreader beam SBM-20-12	1
4	28-112-040	Clevis pin, 1/2"x2"	2



## SPECIFICATIONS

08-007-169

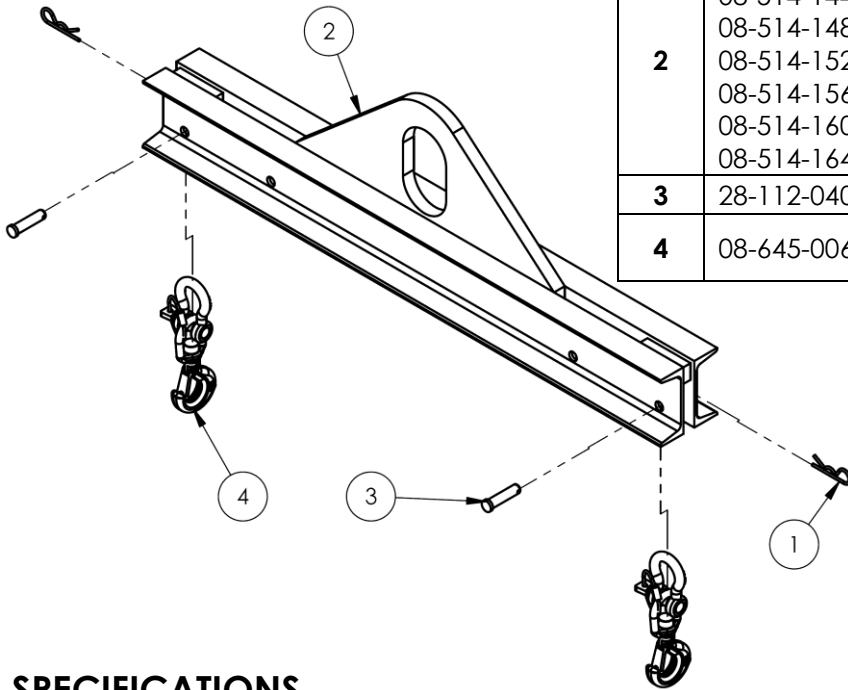


Model	A	B	C	Minimum spread	Maximum spread	Capacity	Net weight
<b>SBM-20-3</b>	3 <sup>9</sup> / <sub>16</sub> " 9.0cm	14" 35.6 cm	16 <sup>1</sup> / <sub>4</sub> " 41.3 cm	21" 53.3 cm	33" 83.8 cm	2,000 lb. 909.1 kg	56 lb. 25.5 kg
<b>SBM-20-4</b>	3 <sup>9</sup> / <sub>16</sub> " 9.0cm	14" 35.6 cm	16 <sup>1</sup> / <sub>4</sub> " 41.3 cm	33" 83.8 cm	45" 114.3 cm	2,000 lb. 909.1 kg	64 lb. 29.1 kg
<b>SBM-20-6</b>	3 <sup>15</sup> / <sub>16</sub> " 10.0cm	14" 35.6 cm	16 <sup>1</sup> / <sub>4</sub> " 41.3 cm	45" 114.3 cm	69" 175.3 cm	2,000 lb. 909.1 kg	97 lb. 44.1 kg
<b>SBM-20-8</b>	3 <sup>15</sup> / <sub>16</sub> " 10.0cm	14" 35.6 cm	16 <sup>1</sup> / <sub>4</sub> " 41.3 cm	69" 175.3 cm	93" 236.2 cm	2,000 lb. 909.1 kg	118 lb. 53.6 kg
<b>SBM-20-10</b>	4 <sup>1</sup> / <sub>4</sub> " 10.8cm	15" 38.1 cm	17 <sup>1</sup> / <sub>4</sub> " 43.8 cm	93" 236.2 cm	117" 297.2 cm	2,000 lb. 909.1 kg	170 lb. 77.3 kg
<b>SBM-20-12</b>	4 <sup>1</sup> / <sub>4</sub> " 10.8cm	15" 38.1 cm	17 <sup>1</sup> / <sub>4</sub> " 43.8 cm	117" 297.2 cm	141" 358.1 cm	2,000 lb. 909.1 kg	197 lb. 89.5 kg

# EXPLODED VIEW & BILL OF MATERIALS: SBM-40 SERIES ECONOMY BEAMS

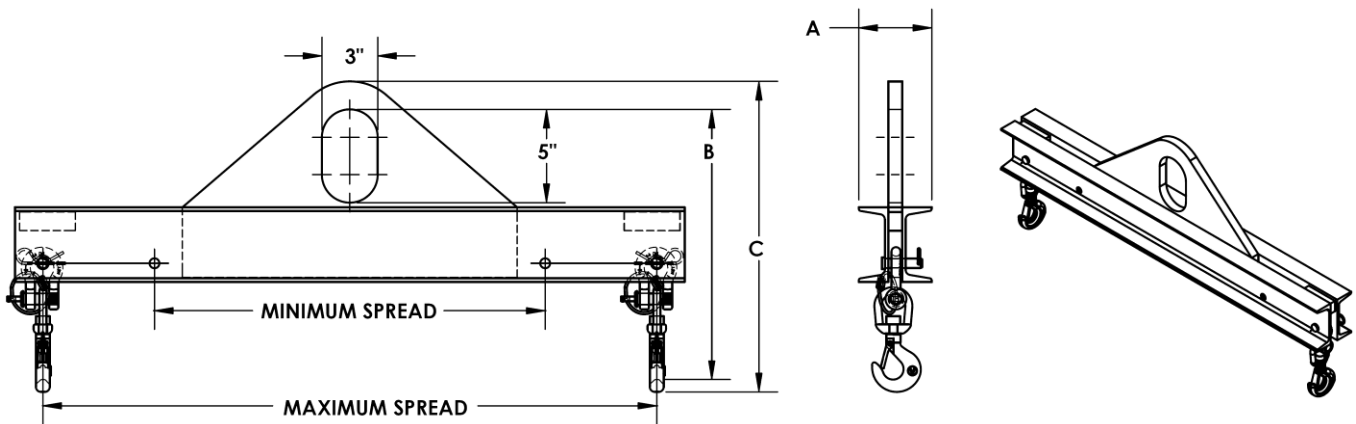
08-006-170

Item	Part no.	Description	Qty.
1	45286	#11 hitch pin clip, 1/8"x2 5/8"	2
2	08-514-144	Weldment, spreader beam SBM-40-3	1
	08-514-148	SBM-40-4	
	08-514-152	SBM-40-6	
	08-514-156	SBM-40-8	
	08-514-160	SBM-40-10	
	08-514-164	SBM-40-12	
3	28-112-040	Clevis pin, 1/2"x2"	2
4	08-645-006	Subassembly, hook with shackle, 1 ton	2



## SPECIFICATIONS

08-007-170

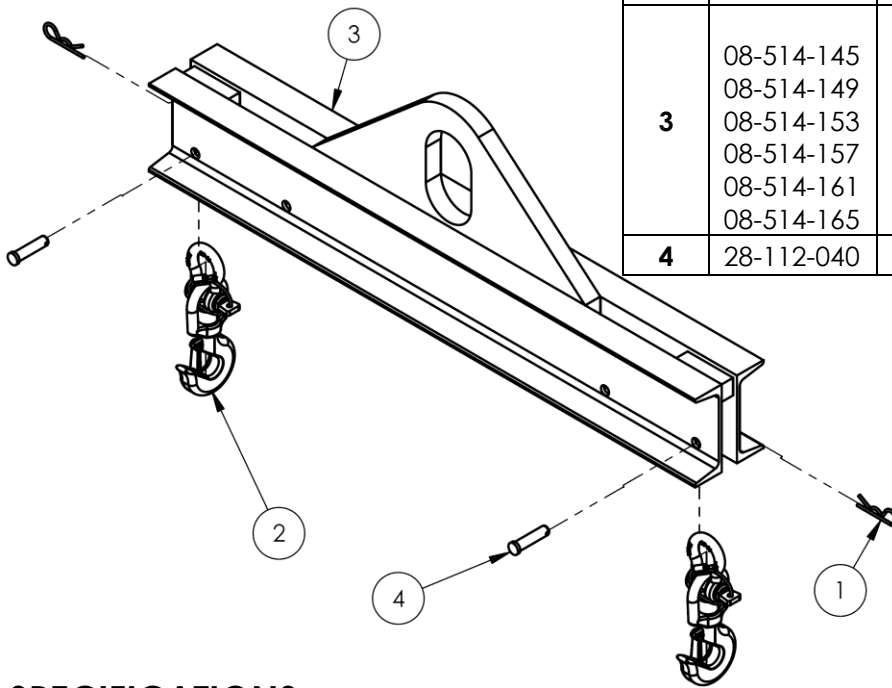


Model	A	B	C	Minimum spread	Maximum spread	Capacity	Net weight
<b>SBM-40-3</b>	3 15/16" 10.0 cm	1 43/8" 36.5 cm	1 69/16" 42.1 cm	21" 53.3 cm	33" 83.8 cm	4,000 lb. 1,818.2 kg	64 lb. 29.1 kg
<b>SBM-40-4</b>	3 15/16" 10.0 cm	1 43/8" 36.5 cm	1 69/16" 42.1 cm	33" 83.8 cm	45" 114.3 cm	4,000 lb. 1,818.2 kg	75 lb. 34.1 kg
<b>SBM-40-6</b>	4 1/4" 10.8 cm	1 53/8" 39.1 cm	1 79/16" 44.6 cm	45" 114.3 cm	69" 175.3 cm	4,000 lb. 1,818.2 kg	117 lb. 53.2 kg
<b>SBM-40-8</b>	4 13/16" 12.2 cm	1 83/8" 46.7 cm	2 09/16" 52.2 cm	69" 175.3 cm	93" 236.2 cm	4,000 lb. 1,818.2 kg	193 lb. 87.7 kg
<b>SBM-40-10</b>	5 3/16" 13.2 cm	1 83/8" 46.7 cm	2 09/16" 52.2 cm	93" 236.2 cm	117" 297.2 cm	4,000 lb. 1,818.2 kg	258 lb. 117.3 kg
<b>SBM-40-12</b>	5 3/16" 13.2 cm	1 83/8" 46.7 cm	2 09/16" 52.2 cm	117" 297.2 cm	141" 358.1 cm	4,000 lb. 1,818.2 kg	297 lb. 135.0 kg

### EXPLODED VIEW & BILL OF MATERIALS: SBM-60 SERIES ECONOMY BEAMS

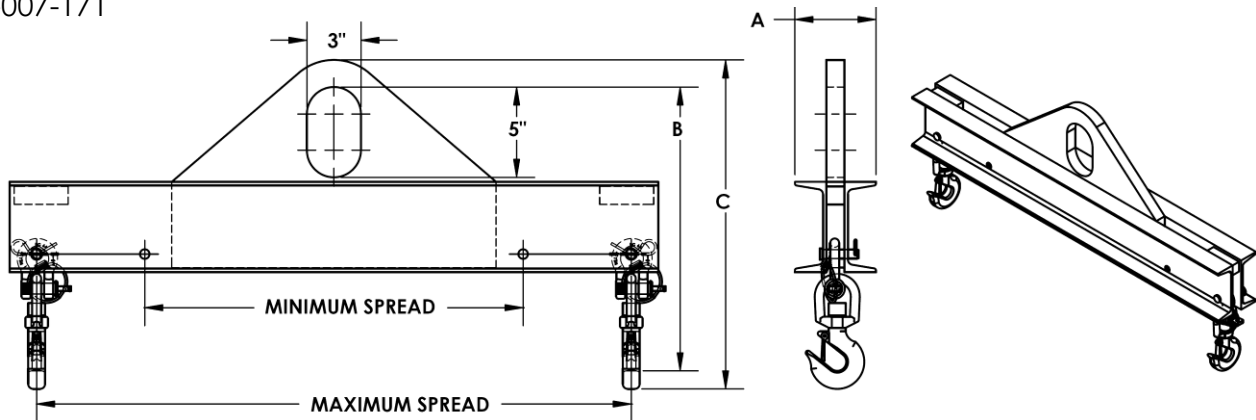
08-006-171

Item	Part no.	Description	Qty.
1	45286	#11 hitch pin clip, 1/8"x2 5/8"	2
2	08-645-005	Subassembly, hook with shackle, 1.5 ton	2
3	08-514-145	Weldment, spreader beam SBM-60-3	1
	08-514-149	SBM-60-4	
	08-514-153	SBM-60-6	
	08-514-157	SBM-60-8	
	08-514-161	SBM-60-10	
	08-514-165	SBM-60-12	
4	28-112-040	Clevis pin, 1/2"x2"	2



### SPECIFICATIONS

08-007-171

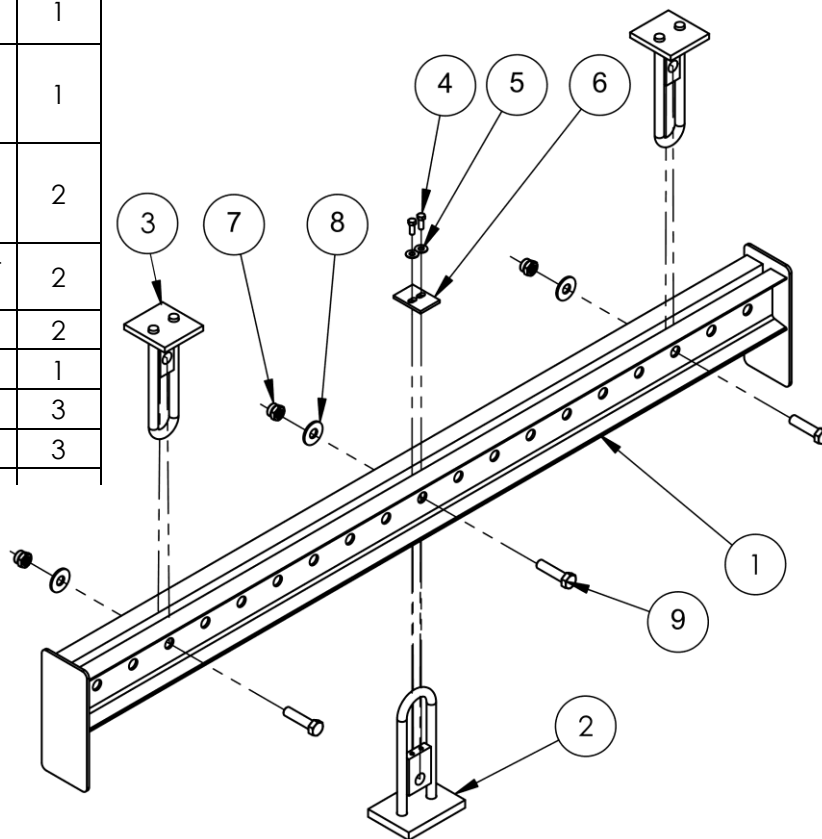


Model	A	B	C	Minimum spread	Maximum spread	Capacity	Net weight
<b>SBM-60-3</b>	4 1/2" 11.4 cm	15 11/16" 39.8 cm	18 3/16" 46.2 cm	21" 53.3 cm	33" 83.8 cm	6,000 lb. 2727.3 kg	88 lb. 40 kg
<b>SBM-60-4</b>	4 1/2" 11.4 cm	15 11/16" 39.8 cm	18 3/16" 46.2 cm	33" 83.8 cm	45" 114.3 cm	6,000 lb. 2727.3 kg	102 lb. 46.4 kg
<b>SBM-60-6</b>	5 3/16" 13.2 cm	18 11/16" 47.5 cm	21 3/16" 53.8 cm	45" 114.3 cm	69" 175.3 cm	6,000 lb. 2727.3 kg	182 lb. 82.7 kg
<b>SBM-60-8</b>	5 3/16" 13.2 cm	18 11/16" 47.5 cm	21 3/16" 53.8 cm	69" 175.3 cm	93" 236.2 cm	6,000 lb. 2727.3 kg	221 lb. 100.5 kg
<b>SBM-60-10</b>	5 1/2" 14.0 cm	18 11/16" 47.5 cm	21 3/16" 53.8 cm	93" 236.2 cm	117" 297.2 cm	6,000 lb. 2727.3 kg	295 lb. 134.1 kg
<b>SBM-60-12</b>	5 1/2" 14.0 cm	18 11/16" 47.5 cm	21 3/16" 53.8 cm	117" 297.2 cm	141" 358.1 cm	6,000 lb. 2727.3 kg	341 lb. 155 kg

# EXPLODED VIEW & BILL OF MATERIALS SBM-25 SERIES ADJUSTABLE BEAMS

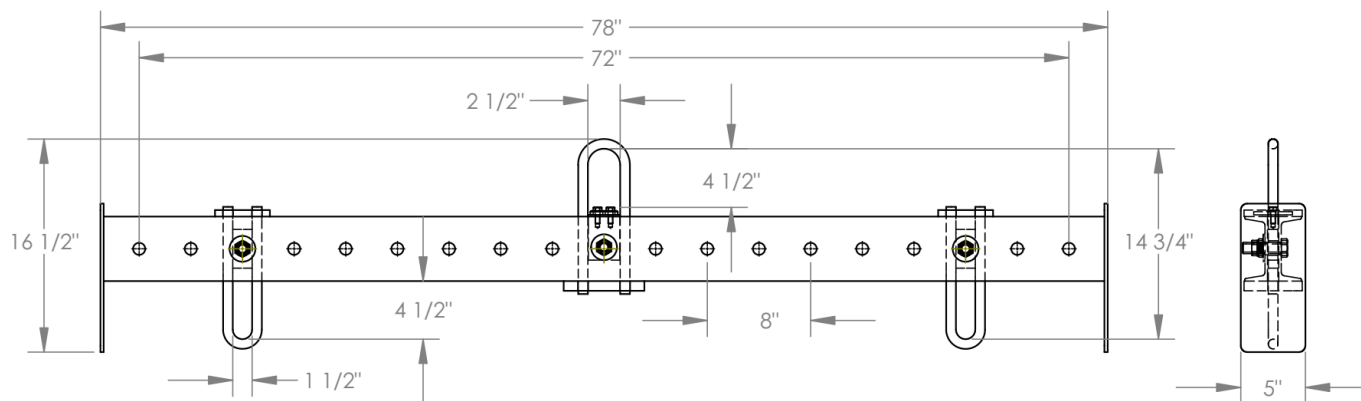
08-006-043

Item	Part no.	Description	Qty.
1	08-514-056	WELDMENT, FRAME (SBM-25)	1
2	43-001-033	SUB-ASSEMBLY, UPPER BAIL (SBM-25) "Beam bale"	1
3	43-001-036	SUB-ASSEMBLY, LOWER BAIL (SBM-25) "Load bale"	2
4	11105	BOLT, HEX HEAD, 3/8"-16 X 1"	2
5	33008	WASHER, FLAT, 3/8"	2
6	08-016-026	PLATE, UPPER BALE	1
7	37039	NUT, NYLOCK, 3/4"-10	3
8	33018	WASHER, FLAT, 3/4"	3
		BOLT, HEX HEAD, 3/4"	



## SPECIFICATIONS

08-007-043



### STANDARD FEATURES

MODEL NUMBER IS SBM-25  
 OVERALL WIDTH IS 5"  
 OVERALL HEIGHT IS 16 1/2"  
 OVERALL LENGTH IS 78"  
 USABLE UPPER BAIL IS 2 1/2" x 4 1/2"

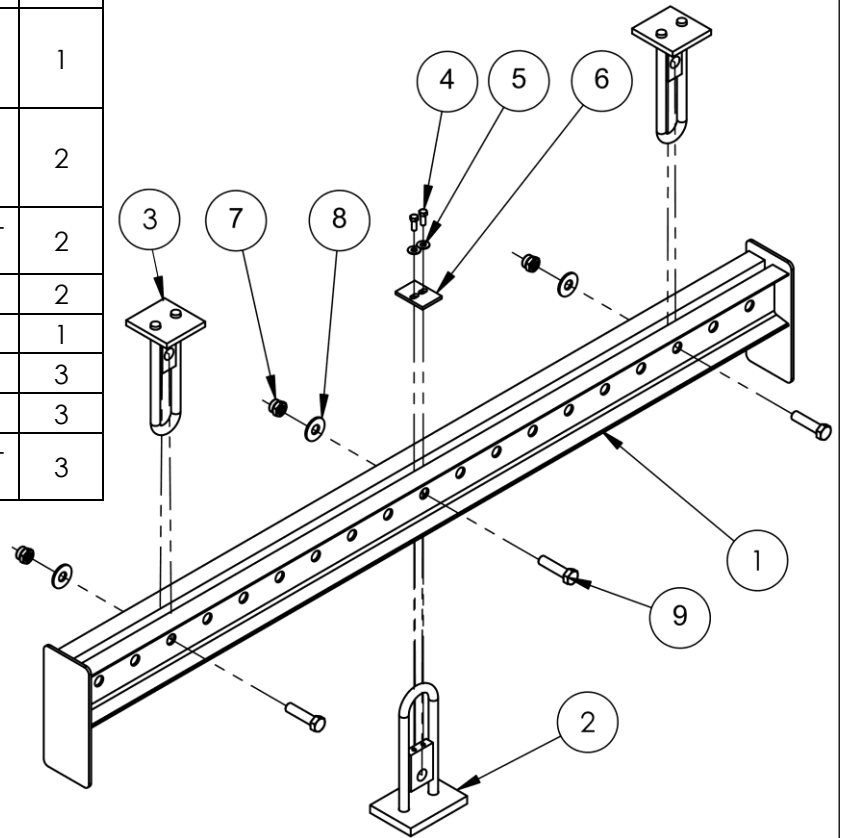
USABLE LOWER BAIL IS 1 1/2" x 4 1/2"  
 MINIMUM SPREAD IS 8"  
 MAXIMUM SPREAD IS 72"  
 HEADROOM IS 14 3/4"  
 CAPACITY IS 2,500 LBS  
 TOUGH BAKED IN POWDER COATED BLUE FINISH

DIMENSION TOLERANCE ± 1/4"

# EXPLODED VIEW & BILL OF MATERIALS SBM-40 SERIES ADJUSTABLE BEAMS

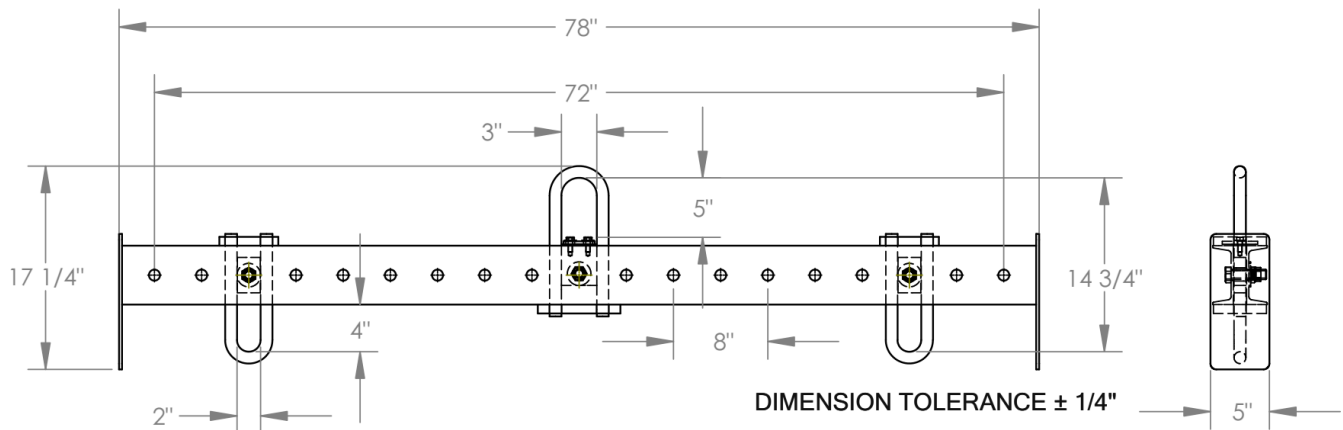
08-006-044

Item	Part no.	Description	Qty.
1	08-514-057	WELDMENT, FRAME (SBM-40)	1
2	43-001-034	SUB-ASSEMBLY, UPPER BAIL (SBM-40) "Beam Bale"	1
3	43-001-037	SUB-ASSEMBLY, LOWER BAIL (SBM-40) "Load bale"	2
4	11105	BOLT, HEX HEAD, 3/8"-16 X 1"	2
5	33008	WASHER, FLAT, 3/8"	2
6	08-016-027	PLATE, UPPER BALE	1
7	37039	NUT, NYLOCK, 3/4'-10	3
8	33018	WASHER, FLAT, 3/4"	3
9	13365	BOLT, HEX HEAD, 3/4"-10 X 3"	3



## SPECIFICATIONS

08-007-044



### STANDARD FEATURES

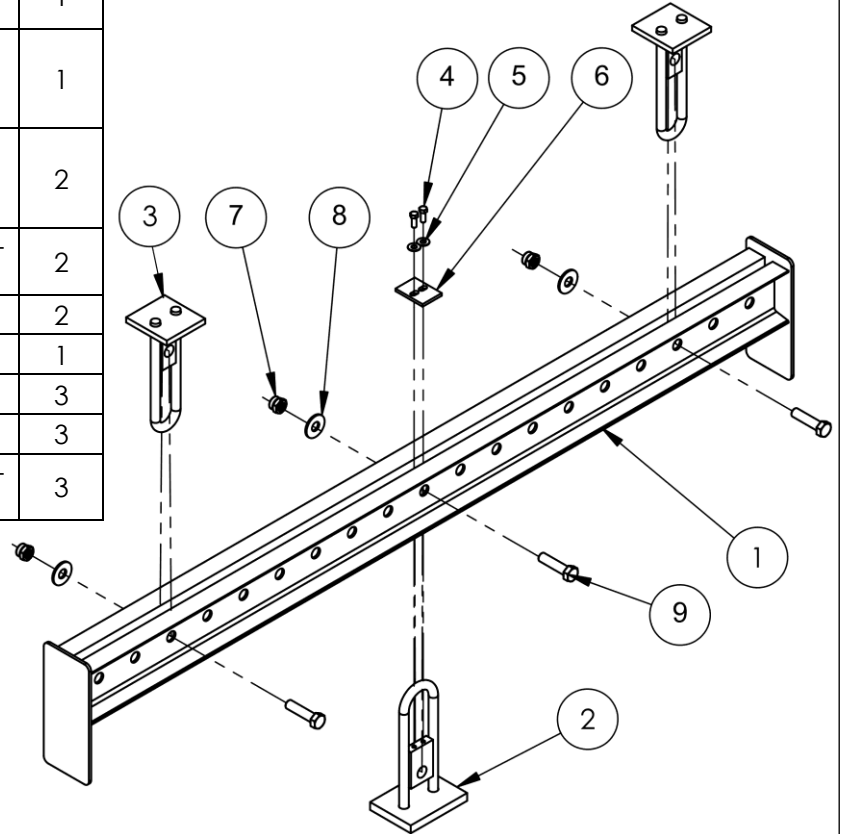
MODEL NUMBER IS SBM-40  
 OVERALL WIDTH IS 5"  
 OVERALL HEIGHT IS 17 1/4"  
 OVERALL LENGTH IS 78"  
 USABLE UPPER BAIL IS 3" x 5"

USABLE LOWER BAIL IS 2" x 4"  
 MINIMUM SPREAD IS 8"  
 MAXIMUM SPREAD IS 72"  
 CAPACITY IS 4,000 LBS  
 TOUGH BAKED IN POWDER COATED BLUE FINISH

# EXPLODED VIEW & BILL OF MATERIALS SBM-80 SERIES ADJUSTABLE BEAMS

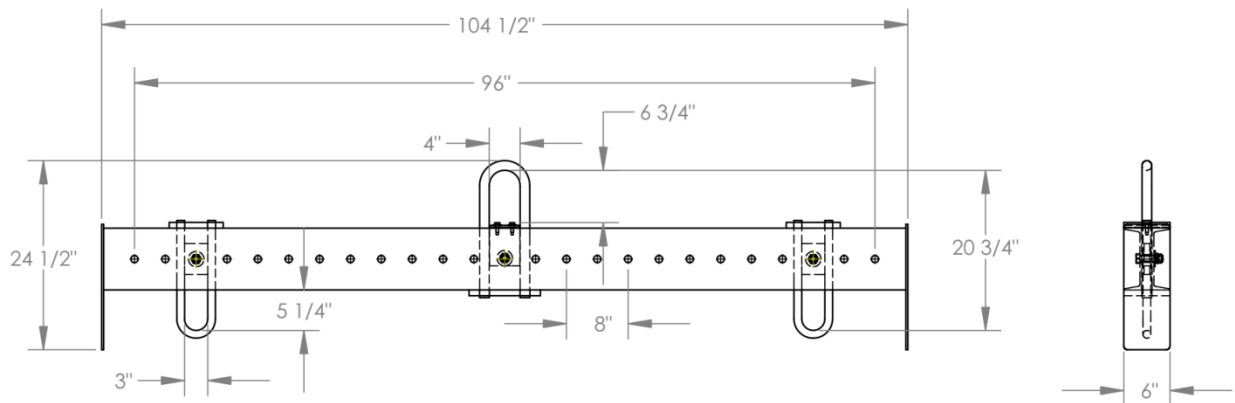
08-006-045

Item	Part no.	Description	Qty.
1	08-514-058	WELDMENT, FRAME (SBM-80)	1
2	43-001-035	SUB-ASSEMBLY, UPPER BAIL (SBM-80) "Beam bale"	1
3	43-001-038	SUB-ASSEMBLY, LOWER BAIL (SBM-80) "Load bale"	2
4	11105	BOLT, HEX HEAD, 3/8"-16 X 1"	2
5	33008	WASHER, FLAT, 3/8"	2
6	08-016-028	PLATE, UPPER BALE	1
7	37039	NUT, NYLOCK, 3/4'-10	3
8	33018	WASHER, FLAT, 3/4"	3
9	13365	BOLT, HEX HEAD, 3/4"-10 X 3"	3



## SPECIFICATIONS

08-007-045



### STANDARD FEATURES

MODEL NUMBER IS SBM-80  
 OVERALL WIDTH IS 6"  
 OVERALL HEIGHT IS 24 1/2"  
 OVERALL LENGTH IS 104 1/2"  
 USABLE UPPER BAIL IS 4" x 6 3/4"  
 USABLE LOWER BAIL IS 3" x 5 1/4"

MINIMUM SPREAD IS 8"  
 MAXIMUM SPREAD IS 96"  
 HEADROOM IS 20 3/4"  
 MAX CAPACITY IS 8,000 LBS  
 TOUGH BAKED IN POWDER COATED BLUE FINISH

## NATIONAL STANDARDS

This product is a "Below-the-Hook Lifting Device" (BTH lifter). [ASME standard B30.20](#) (the "Standard") applies to BTH lifters. Acquire a copy of the latest version of the Standard before putting the lifter into service. Follow all use and maintenance/care instructions provided in the Standard as well as all other provisions for owners and users. If content in these instructions conflicts with any recommendation or mandatory provision in the Standard, apply the provision from the Standard. Vestil encourages you to immediately contact [TECHNICAL SERVICE](#) if you discover any conflicts.

## RECORD OF SATISFACTORY CONDITION

Record the condition of your lifting beam before putting it into service.

Economy models: Refer to diagrams on p. 11 as well as appropriate Exploded view

Measure the length and width of the bale. Record your measurements. Measure the throat opening of each hook. Record your measurements. Examine both (hook) clevis pins and shackle pins. Photograph all pins.

Adjustable Models: Refer to diagrams on p. 12 as well as appropriate Exploded View.

Disconnect the Beam Bale and Load Bales. Measure the length and width of the Beam Bale. Measure the lengths and widths of the load bales. Record all measurements. Photograph all 3 bales so that all features are clearly imaged.

### All Models

Thoroughly photograph the spreader beam from multiple angles. Collect all photographs and writings into a single file or computer folder. Mark the file appropriately to identify it. This file/folder is a record of the lifting beam in satisfactory condition. Compare the results of all inspections to this record to determine whether the unit is still in satisfactory condition. If the lifter is not in satisfactory condition, repair it before returning it to service. Purely cosmetic changes, like damaged paint/powdercoat, do not constitute changes from satisfactory condition. However, touchup paint should be applied to all affected areas as soon as cosmetic damage occurs to prevent rust/corrosion from accumulating. If left unaddressed, rust/corrosion will eventually degrade the lifter from satisfactory condition and could make it unsafe to use.

## LOAD TESTS

After creating a [RECORD OF SATISFACTORY CONDITION](#) and before using the lifter for the first time, a qualified person should conduct a load test. The test load should be 125% of the rated load of the lifter. The rated load of all Economy SBM-series lifters is 800 pounds (363.6kg), so the test load should be 1000 pounds (454.5kg). Adjustable SBM models have varying capacities: Raise the lifter until it is suspended. Return the lifter to the ground and unload it. Perform a [Monthly Inspection](#) as described in [INSPECTIONS & MAINTENANCE](#) (p.13). The lifter must undergo load testing immediately after it is repaired, modified, or altered.

## SPECIFICATIONS

Dimensions, net weight, and capacity information for each spreader beam model is provided in the "Specifications" sections on [pages 3, 4, 5, and 6](#). Specifications documents for SBM-series spreader beams are available online to anyone who visits the Vestil website. Acquire the appropriate specifications document by opening this webpage:

<https://www.vestil.com/product.php?FID=571>. Scroll down the page and click on the Download

Drawing icon (  ) to access the specifications drawing for your particular model.

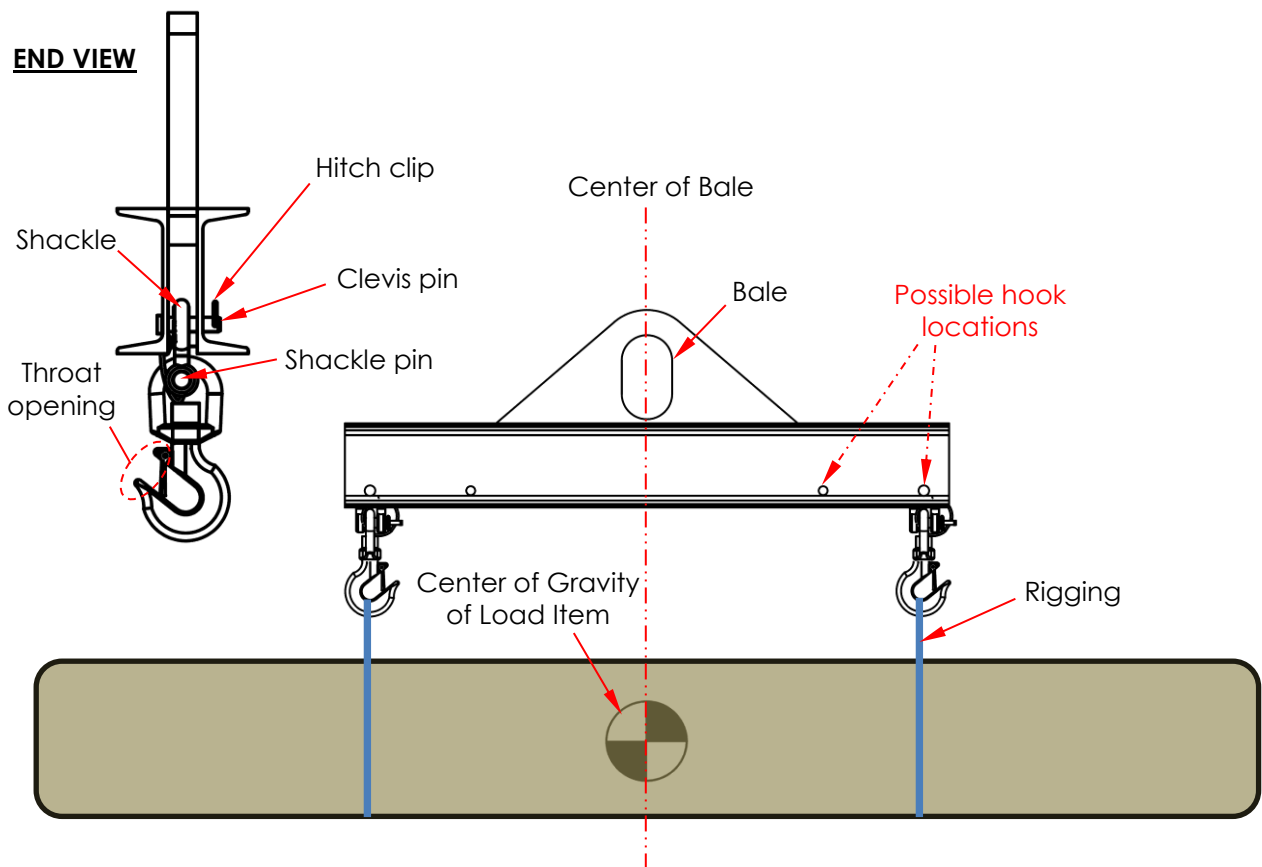
## USING AN ECONOMY MODEL SBM LIFTING BEAM

### ⚠ WARNING

The capacity of the hoist, crane, and rigging should equal or exceed the capacity of the spreader beam. DO NOT exceed the capacity of the beam, crane, rigging, or the hoist, whichever is smallest.

Load the lifter by applying the following steps:

1. Tighten both shackle pins.
2. Attach the hoist hook to the bale of the spreader beam. Makes sure that the hoist is centered above the bale, i.e. the hoist chain/rope must be vertical.
3. Move the beam into position above the load item. Center the bale/crane hook above the load's center of gravity.
4. Attach rigging to the load item.
5. Adjust the positions of the load hooks. Rigging should be vertical when attached to the hooks. To change the position of a hook, remove the hitch clip from the clevis pin; then remove the clevis pin. Move the hook and shackle to the necessary location and reinstall the clevis pin. Secure the clevis pin with its hitch clip. Select the appropriate location of the hook and reattach the shackle. Generally, the hooks should be attached in the same locations on either side of the bale. If the load item and beam are not level when the **test lift** is performed (step 7 below), the center of gravity of the load item is on the low side of the item instead of being directly below the bale. Relocate the hooks and rigging to position the center of gravity of the load directly below the center of the bale.
6. Connect the rigging to the load hooks (of the beam).
7. Perform a **test lift**. Raise the load just a few inches above the ground. The load and beam should balance, i.e. be horizontally level. If one end of the load is lower than the other, return the load to the ground. Reposition hooks and rigging as necessary to balance the load. When balanced, the spreader beam and load item are horizontal.



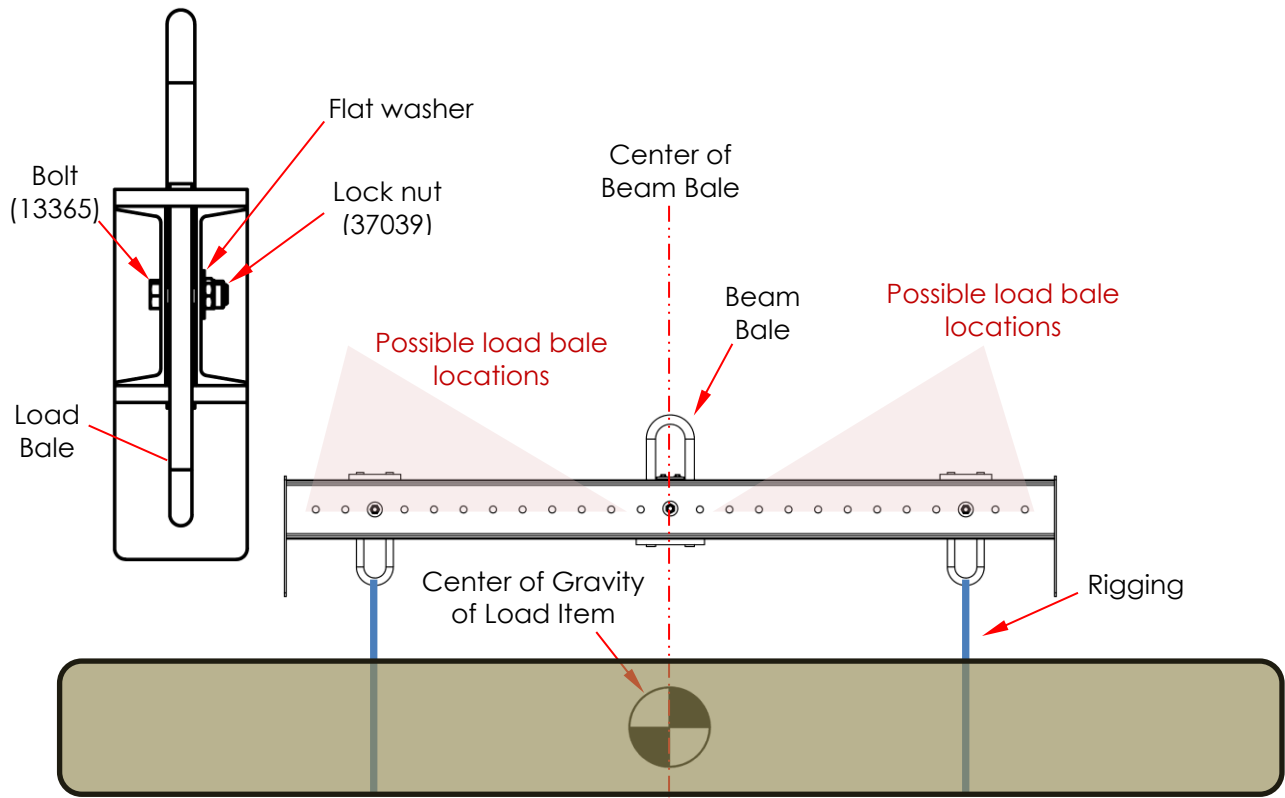
## USING AN ADJUSTABLE MODEL SBM LIFTING BEAM

### ⚠ WARNING

The capacity of the hoist, crane, and rigging should equal or exceed the capacity of the spreader beam. DO NOT exceed the capacity of the beam, crane, rigging, or the hoist, whichever is *smallest*.

Load the lifter by applying the following steps. Numbers in parentheses ( ) are part numbers from the [EXPLODED VIEWS](#) on pages [7](#), [8](#), and [9](#). NOTE: Adjusting locations of the load bales requires removing their lock nuts (37039). Any time a lock nut is removed, it should be replaced with a new lock nut.

1. Attach the hoist hook to the beam bale of the spreader beam. Makes sure that the hoist is centered above the bale, i.e. the hoist chain/rope must be vertical, to minimize beam swing.
2. Move the beam into position above the load item. Center hoist and the beam bale above the center of gravity of the load item.
3. Attach rigging to the load item.
4. Adjust the positions of the load bales. Rigging should be vertical when attached to the load item and to the load bales. To change the position of a load bale, remove the hex nut (37039) and flat washer (33018) from the hex head bolt (13365); then remove the bolt. Move the bale to the location necessary to make load rigging vertical when the load is suspended. Reinstall the bolt and secure it with a flat washer and a new nylon lock nut (37039). Generally, the load bales should be attached to the beam in the same locations on either side of the bale. If the load item and beam are not level when the **test lift** is performed (step 7 below), the center of gravity of the load item is *on the low side of the item* instead of being directly below the center of the beam bale. Relocate the load bales and rigging to position the center of gravity of the load directly below the center of the bale. Generally, if the load hangs lower on the left side, both load bales should be shifted to the right. If the load hangs lower on the right side, both load bales should be shifted to the left.
5. Connect the rigging to the load bales of the beam.
6. Perform a **test lift**. Raise the load just a few inches above the ground. The load and beam should balance, i.e. be horizontally level. If one end of the load is lower than the other, return the load to the ground. Reposition load bales and rigging as necessary to balance the load. When balanced, the spreader beam and load item are horizontal when the load is entirely suspended above the ground by the beam.



## INSPECTIONS & MAINTENANCE

Inspection procedures for mechanical, below-the-hook lifting devices like SBM series economy and adjustable lifting beams are included in the most current revision of ASME B30.20 (the "Standard"). As stated above in the [NATIONAL STANDARDS](#) section, Vestil recommends that you acquire a copy of the most recent revision of this Standard. Apply all use and maintenance/care instructions in the Standard. Vestil also recommends that you contact your local occupational safety and health authority to determine if any laws, regulations, codes, ordinances, etc. apply inspection requirements to below-the-hook lifters in the jurisdiction where the SBM is used.

Inspections and repairs should only be performed by qualified persons. Compare the results of each inspection to the [RECORD OF SATISFACTORY CONDITION](#). Do not use the lifter unless all parts are in satisfactory condition. Replace parts that are not in satisfactory condition before using the lifter again. **DON'T GUESS! If you have any questions about the condition of your lifting beam, contact the [TECHNICAL SERVICE](#) department.** The phone number is provided on the cover page of this manual. Never make temporary repairs of damaged or missing parts. Only use manufacturer-approved replacement parts. Deformities, cracks, and severe wear of the lifting arm or main body requires immediate replacement of the entire unit.

### **Every lift**

Inspect the lifter at the beginning of each day of use prior before using it. Look for dirt or other surface debris. Clean the surfaces. Economy models: Check the bale, as well as each hook, shackle and shackle pin for cracks. Make sure that both shackle pins are tight. Adjustable models: Examine the Beam Bale and both Load Bales for cracks. Make sure that all bales are securely fastened to the beam.

### **Monthly Inspections**

At least once per month a qualified person must perform the following inspections. Written reports should be prepared for every monthly inspection including inspections following [LOAD TESTS](#).

1. Beam frame: Examine each pin/bolt hole for elongations. Examine the metal surrounding pin/bolt holes for cracks and significant rust/corrosion. Pin holes should be smooth and circular; the frame should be square and rigid and should lack cracks, warps, regions weakened by severe rusting or corrosion, metal erosion, and other forms of damage.
2. [Economy models] Pins: Inspect clevis pins & shackle pins. Confirm that pins are straight, without cracks, warps, etc.

[Adjustable models] Hardware/Fasteners: Inspect all hardware/fasteners for cracks, warps, and other damage. Replace damaged fasteners. Any time a lock nut is removed, it must be replaced with a new lock nut.

3. [Economy Models] Hooks and shackles (hardware): examine each hook and shackle for damage including significant wear, warping, cracks, metal erosion, deformation, and other forms of damage. Measure the throat opening of each hook. Compare it to the measurements in the [RECORD](#). The throat opening of each hook should not be 15 percent or more in excess of normal throat opening or be twisted more than 10° from the plane of the unbent hook.

[Adjustable models] Bales: Examine all 3 bales (Beam and Load bales) for damage, e.g. twists, breaks, cracks, warps, elongation, metal erosion, significant wear, etc. Measure the width and length of each bale. Compare the measurements to your [RECORD](#).

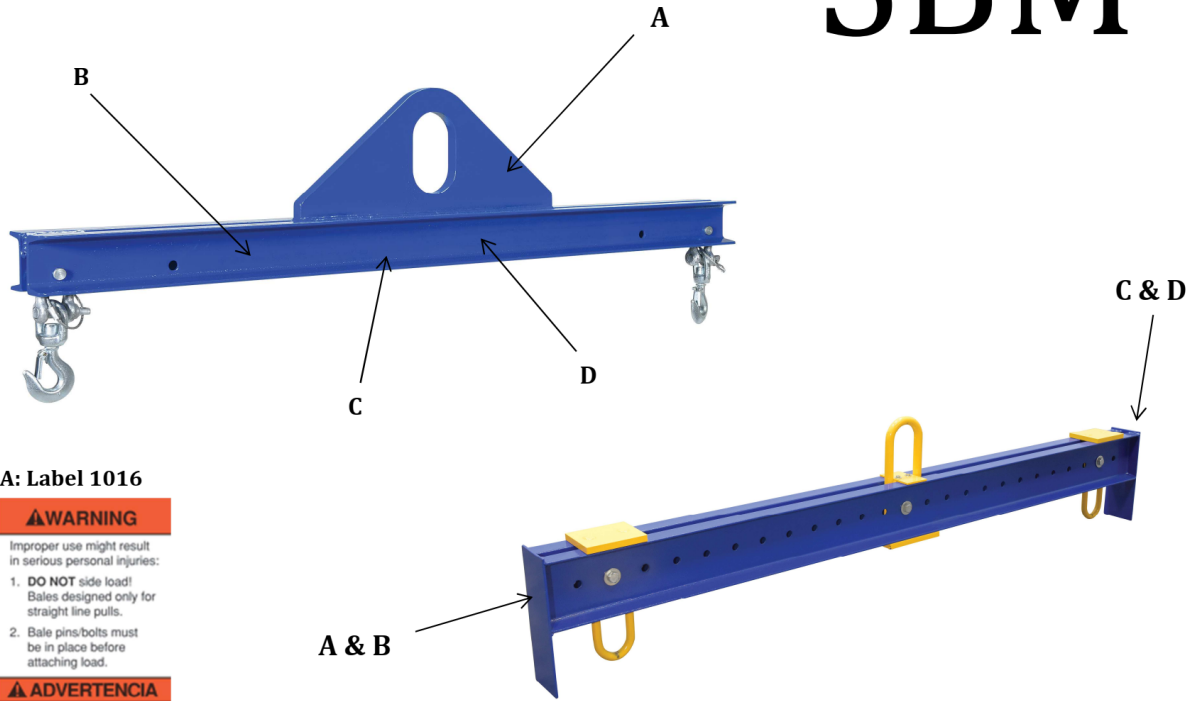
4. Labeling: Labels should be undamaged, easily readable from a reasonable distance, and applied where shown in the [LABELING DIAGRAM](#). If a label(s) is unreadable or missing, contact Vestil to order a replacement.

5. Welds: Confirm that all welds are intact.

# LABELING DIAGRAM

Label content and location are subject to change so your product might not be labeled exactly as shown. If your unit is labeled differently, contact [TECHNICAL SERVICE](#). Replace all labels that are damaged, missing, or not easily readable (e.g. faded). To order replacement labels, contact the technical service and parts department online at <https://www.vestil.com/page-parts-request.php>. Alternatively, you may request replacement parts and/or service by calling (260) 665-7586 and asking the operator to connect you to the Parts Department.

# SBM



**A: Label 1016**

**⚠️ WARNING**  
 Improper use might result in serious personal injuries:

- DO NOT** side load! Bales designed only for straight line pulls.
- Bale pins/bolts must be in place before attaching load.

**⚠️ ADVERTENCIA**  
 El uso indebido podría causar lesiones personales graves:

- NO** voltear de lado, pacas diseñado solamente para poner en línea recta.
- Los pin de las pacas / pernos deben estar en su lugar antes de colocar la carga. 1016

**B: Label 675**

⚠️ WARNING	⚠️ ADVERTENCIA
<ul style="list-style-type: none"> <li>DO NOT exceed rated capacity</li> <li>DO NOT use if damaged, malfunctioning, or missing parts</li> <li>DO NOT lift people OR lift loads over people</li> <li>DO NOT raise load higher than necessary</li> <li>DO NOT leave a suspended load unattended</li> <li>DO NOT use lifter unless you read and understand the owner's manual</li> <li>DO NOT alter OR modify lifter</li> <li>DO NOT remove OR obscure any label</li> <li>STAY CLEAR of suspended loads</li> <li>Secure load before using this device</li> </ul>	<ul style="list-style-type: none"> <li>NO exceda la capacidad tasada</li> <li>NO USE si las partes están dañadas, no funcionan correctamente o faltan partes</li> <li>NO eleve al personal o eleve cargas sobre el personal</li> <li>NO eleve la carga mas alto de lo necesario</li> <li>NO deje desatendida una carga que este suspendida</li> <li>NO use el elevador a no ser que haya leído y entendido las instrucciones del manual del propietario</li> <li>NO altere o modifique el elevador</li> <li>NO quite u oscurezca ninguna etiqueta</li> <li>MANTENGASE alejado de las cargas suspendidas 675</li> <li>Asegure la carga antes de usar este dispositivo rev 0511</li> </ul>

**C: Label 202**

**VESTIL MFG.**  
 2999 NORTH WAYNE STREET  
 ANGOLA, INDIANA 46703  
 202  
 rev 0519

**D: Label 1000**

Model No. \_\_\_\_\_ Serial No. \_\_\_\_\_  
 No. Modelo \_\_\_\_\_ No. Serie \_\_\_\_\_  
 Capacity \_\_\_\_\_ lbs. Lifter Weight \_\_\_\_\_ lbs.  
 Capacidad \_\_\_\_\_ kgs. Peso del Elevador \_\_\_\_\_ kgs.

BTH-1 Design Category: B      BTH-1 Service Category: 1      VESTIL MANUFACTURING  
 BTH-1 Categoría de Diseño B      BTH-1 Categoría de Servicio: 1      2999 North Wayne Street  
 Angola, IN 46703

Read Owners Manual for product safety warnings      1000  
 Lea Manual de Proprietarios para advertencias de seguridad de producto

Label 1072 is to be applied to the outside of individual packaging

**⚠️ WARNING:** Reproductive Harm - [www.P65Warnings.ca.gov](http://www.P65Warnings.ca.gov)  
**⚠️ ADVERTENCIA:** Daño Reproductivo - [www.P65Warnings.ca.gov](http://www.P65Warnings.ca.gov) 1072

**⚠️ WARNING:** Cancer - [www.P65Warnings.ca.gov](http://www.P65Warnings.ca.gov)  
**⚠️ ADVERTENCIA:** Cáncer - [www.P65Warnings.ca.gov](http://www.P65Warnings.ca.gov)

# SPREADER BEAM

10/4/2021



## LIMITED WARRANTY

Vestil Manufacturing Company ("Vestil") warrants this product to be free of defects in material and workmanship during the warranty period. Our warranty obligation is to provide a replacement for a defective, original part covered by the warranty after we receive a proper request from the Warrantee (you) for warranty service.

### Who may request service?

Only a warrantee may request service. You are a warrantee if you purchased the product from Vestil or from an authorized distributor AND Vestil has been fully paid.

### Definition of "original part"?

An original part is a part used to make the product as shipped to the Warrantee.

### What is a "proper request"?

A request for warranty service is proper if Vestil receives: 1) a photocopy of the Customer Invoice that displays the shipping date; AND 2) a written request for warranty service including your name and phone number. Send requests by one of the following methods:

<u>US Mail</u>	<u>Fax</u>	<u>Email</u>
Vestil Manufacturing Company	(260) 665-1339	<a href="mailto:info@vestil.com">info@vestil.com</a>
2999 North Wayne Street, PO Box 507	<u>Phone</u>	Enter "Warranty service request"
Angola, IN 46703	(260) 665-7586	in subject field.

In the written request, list the parts believed to be defective and include the address where replacements should be delivered. After Vestil receives your request for warranty service, an authorized representative will contact you to determine whether your claim is covered by the warranty. Before providing warranty service, Vestil will require you to send the entire product, or just the defective part (or parts), to its facility in Angola, IN.

### What is covered under the warranty?

The warranty covers defects in the following original, dynamic parts: motors, hydraulic pumps, motor controllers, and cylinders. It also covers defects in original parts that wear under normal usage conditions ("wearing parts"), such as bearings, hoses, wheels, seals, brushes, and batteries.

### How long is the warranty period?

The warranty period for original dynamic components is 90 days. For wearing parts, the warranty period is 90 days. Both warranty periods begin on the date Vestil ships the product to the Warrantee. If the product was purchased from an authorized distributor, the periods begin when the distributor ships the product. Vestil may, at its sole discretion, extend a warranty period for products shipped from authorized distributors by up to 30 days to account for shipping time.

### If a defective part is covered by the warranty, what will Vestil do to correct the problem?

Vestil will provide an appropriate replacement for any *covered* part. An authorized representative of Vestil will contact you to discuss your claim.

### What is not covered by the warranty?

The Warrantee (you) is responsible for paying labor costs and freight costs to return the product to Vestil for warranty service.

### Events that automatically void this Limited Warranty.

- Misuse;
- Negligent assembly, installation, operation or repair;
- Installation/use in corrosive environments;
- Inadequate or improper maintenance;
- Damage sustained during shipping;
- Collisions or other accidents that damage the product;
- Unauthorized modifications: Do not modify the product IN ANY WAY without first receiving written authorization from Vestil.

### Do any other warranties apply to the product?

Vestil Manufacturing Co. makes no other express warranties. All implied warranties are disclaimed to the extent allowed by law. Any implied warranty not disclaimed is limited in scope to the terms of this Limited Warranty. Vestil makes no warranty or representation that this product complies with any state or local design, performance, or safety code or standard. Noncompliance with any such code or standard is not a defect in material or workmanship.