


**Model Numbers Covered:**

 36SW550, 425SW550, 425SW750, 425SW750-2, 48SW750-N,  
 48SW750-2N, 485SW750, 485SW750-2, 54SW750

Please read and save these instructions. Read carefully before attempting to assemble, install, operate or maintain the equipment described within this manual. Carefully follow all safety information.

Save this manual for future reference.

Model # \_\_\_\_\_ Purchase Date: \_\_\_\_\_


**Tools/Materials Needed:**

- Drill/drill bits/phillips bit
- Ratchet/Socket set

**Contents:**

- Exhaust Fan(1)
- Instruction manual(1)

**Inspection:**

After unpacking your fan, carefully inspect for any damage that may have occurred during transit. Inspect for loose, missing or damaged parts. If there is physical damage to any parts of the fan, a freight claim must be filed with the carrier. Check to assure that all bolts, screws and set screws are securely tightened and have not become loose during transit. Retighten as required.

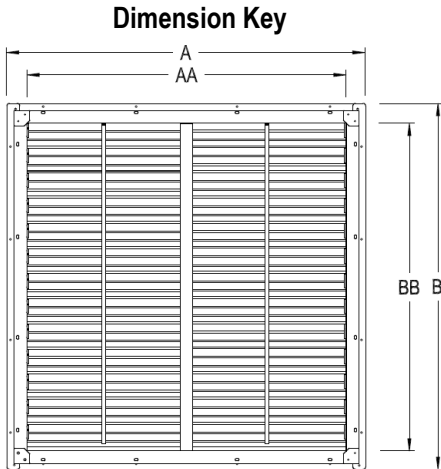

**Warning:**
**General Safety Instructions**

1. Before installing or servicing, disconnect all power. Keep hands and body parts clear of all moving parts when installing or servicing.
2. Read and follow all instructions, cautions, dangers and warnings. Failure to do so could result in personal injury, death or property damage.
3. Make sure the electrical power source conforms to the requirement of the fan(s) as well as local codes.
4. Electrical connections, installation and maintenance must be done by qualified electrical personnel in accordance with all applicable codes.
5. Unit must be adequately grounded.
6. To reduce the risk of fire or electrical shock, do not expose this fan to water.
7. Do not touch electrically live components.
8. Free rotation of the propeller is critical. It must not touch any part of the venturi, framework or drive components.
9. Assure that all power cords do not come in contact with any sharp edges, hot surfaces or chemicals. Immediately replace any damaged cords.
10. Keep hands and body parts clear of all moving parts when installing or servicing.

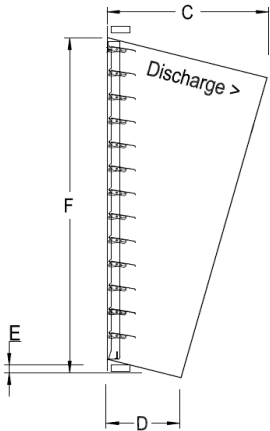

**Caution: OSHA requires OSHA compliant guards within 7ft of the floor or working level.**
**Specifications(See Dimension Key On Following Page)**

Model	Prop Dia.	# Of Wings	Dimension (In.)								Rough-in Opening		Ship Wt	Ship. Dims.
			A (In.)	B (In.)	AA (In.)	BB (In.)	C (In.)	D (In.)	E (In.)	F (In.)	Height	Width		
36SW550	36"	4	44	45 1/4	39 1/2	40 1/8	27	16 3/4	4 1/2	45 3/4	42 7/8	40 7/8	185	48x32x51
425SW550	42"	5	50	51 1/2	46	47 1/2	29 1/4	17 1/2	3	48	49 1/4	47	275	54x34x54
425SW750	42"	5	50	51 1/2	46	47 1/2	29 1/4	17 1/2	3	48	49 1/4	47	285	54x34x54
425SW750-2	42"	5	50	51 1/2	46	47 1/2	29 1/4	17 1/2	3	48	49 1/4	47	285	54x34x54
48SW750-N	48"	3	56	57 7/8	51 1/2	53 1/4	29 1/4	15 5/8	3	58 1/8	55 1/2	52 7/8	289	60x34x62
48SW750-2N	48"	3	56	57 7/8	51 1/2	53 1/4	29 1/4	15 5/8	3	58 1/8	55 1/2	52 7/8	289	60x34x62
485SW750	48"	5	56	57 7/8	51 1/2	53 1/4	29 1/4	15 5/8	3	58 1/8	55 1/2	52 7/8	292	60x34x62
485SW750-2	48"	5	56	57 7/8	51 1/2	53 1/4	29 1/4	15 5/8	3	58 1/8	55 1/2	52 7/8	292	60x34x62
54SW750	54"	3	62 5/8	64 3/4	58 1/8	60 1/8	34 5/8	19 1/2	4 1/8	66	62 1/2	59 1/2	336	69x36x72

## Troubleshooting Guide



Note: Drawing depicts overall housing dimensions including intake shutter.



Symptom	Possible Cause(s)	Corrective Action
Fan will not start	1. Tripped circuit breaker	1. Reset circuit breaker
	2. Defective motor	2. Repair or replace
	3. Incorrectly wired	3. Shut off power, check for proper connections
	4. Electricity turned off	4. Contact local power company
Excessive noise or vibration	1. Blade is hitting housing	1. Free blade of obstruction
	2. Blade is bent	2. Replace blade
	3. Fan not securely anchored	3. Secure properly
	4. Bad/noisy bearings	4. Replace motor
Insufficient airflow	1. Incorrect voltage applied	1. Wire properly
	2. Defective motor	2. Replace motor
	3. Propeller is damaged	3. Replace propeller
	4. Blocked Airflow	4. Remove obstructions
	5. Not enough intake air	5. Add additional air intake openings
	6. Fan is dirty	6. Clean fan guards/screens, motor and propeller
Motor overheats or trips out	1. Over/under line voltage	1. Contact local power company
	2. Defective motor	2. Replace motor
	3. Fan is dirty.	3. Clean fan guards/screens, motor and propeller
	4. Not enough intake air	4. Add additional air intake openings

### Fan Installation Tips:

For framing dimensions, refer to rough-in opening height and width shown in the specifications on the previous page.

Position the fan for desired airflow. Air will discharge on the side of the fan facing the propeller.

Assure the fan is fastened securely in the opening to avoid excess "rattling" or vibration using proper fasteners. Fasteners not included.

Refer to motor nameplate for wiring diagram.

**⚠ Caution: Before operating your new fan, check blade for proper torque, check all fasteners for tightness and assure screens and/or shutters are securely in place.**

### Performance



Model	HP	Spd	F.L.A.	Volt.	Ph	Hz	Fan RPM	High CFM				CFM/Watt				Db @ 7ft	Bess Labs Test #
								0.00" SP	0.05" SP	0.10" SP	0.15" SP	0.00" SP	0.05" SP	0.10" SP	0.15" SP		
36SW550	3/4	1	6.4/3.2	115/230	1	60	709	11,420	10,790	10,170	9480	19.5	17.6	15.9	14.2	73	16135
425SW550	3/4	1	6.4/3.2	115/230	1	60	465	13,207	11,993	10,747	9,698	21.2	18.1	15.3	13.4	70	-
425SW750	1	1	9.4/4.7	115/230	1	60	580	16,780	15,913	14,956	14,016	17.5	15.8	14.2	12.7	74	-
425SW750-2	1	2	7.0/3.5	230	1	60	565	16,277	15,436	14,507	13,596	17	15.3	13.8	12.3	73	-
48SW750-N	1	1	9.4/4.7	115/230	1	60	625	21,100	20,100	18,900	17,700	20.4	18.9	17.3	15.8	77.2	16140
48SW750-2N	1	2	7.0/3.5	230	1	60	595	20,780	19,700	18,750	17,400	20.1	18.7	17.1	15.6	77.1	-
485SW750	1	1	9.4/4.7	115/230	1	60	455	20,045	18,995	17,766	16,550	19.4	17.8	16.1	14.6	71	-
485SW750-2	1	2	7.0/3.5	230	1	60	440	19,444	18,425	18,605	16,054	18.8	17.3	15.6	14.2	70	-
54SW750	1	1	9.4/4.7	115/230	1	60	575	25,935	24,605	22,990	19,190	22.4	20.3	18.5	16.2	76.4	-

**Maintenance**

Periodic maintenance schedules should be set to assure reliability and performance of the fan.

Check for excessive vibration while fan is running.

Periodically inspect and tighten all set screws and hardware—check torque on propeller, bearings and pulleys.

Assure all mounting hardware, chains, etc. are properly secured.

Motors feature permanently sealed ball bearings and require no further lubrication.

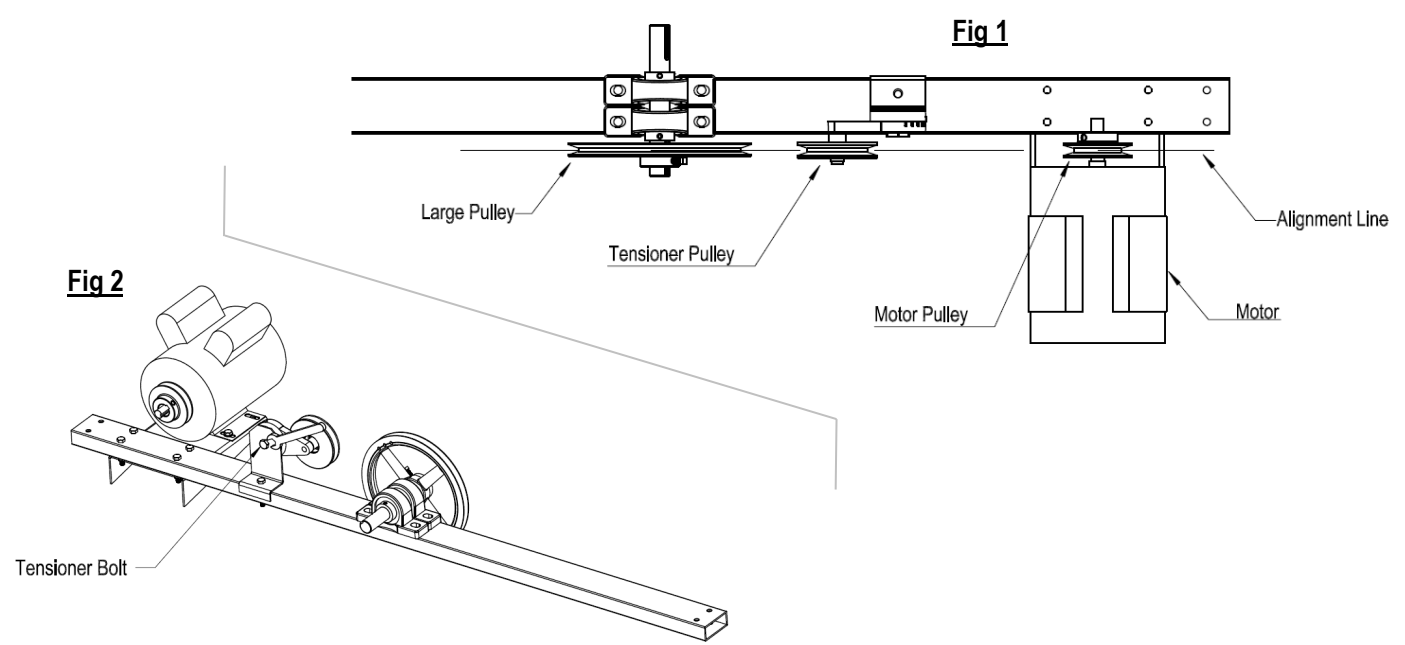
The fan propeller should be periodically cleaned to assure proper balance and performance.

Grease pillow block bearings seasonally. Use caution not to apply too much grease as it may damage the seals.

Periodically check for proper pulley/belt alignment. **See Fig. 1**

If necessary, belt tensioner can be adjusted by loosening bolt on back of bracket and moving tensioner pulley arm. **See Fig. 2**

**Note: Please contact the dealer/distributor where you purchased the fan from with any questions regarding the fan, manual or if you are in need of replacement parts.**



**Maintenance Notes:**

---



---



---



---



---



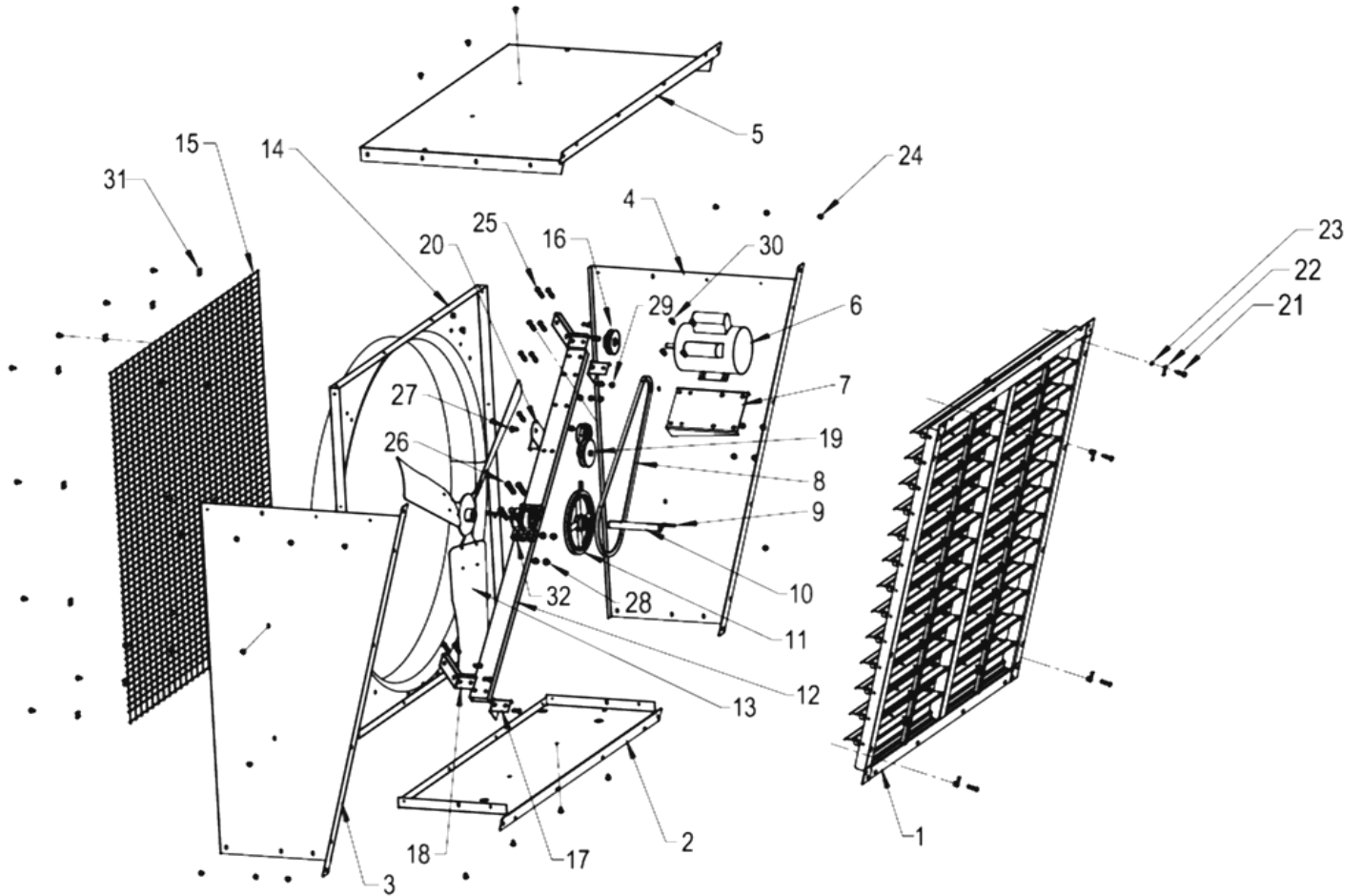
---



---



---



Ref No	Description	36SW550	425SW550	425SW750	425SW750-2	48SW750-N	48SW750-2N	485SW750	485SW750-2	54SW750	Qty
1	Intake shutter	SA36SW-N	SA42SW	SA42SW	SA42SW	SA48SW-N	SA48SW-N	SA48SW-N	SA48SW-N	SA54SW	1
2	Btm housing panel	N/A	N/A	N/A	N/A	N/A	N/A	N/A	N/A	N/A	1
3	Left housing panel	N/A	N/A	N/A	N/A	N/A	N/A	N/A	N/A	N/A	1
4	Right housing panel	N/A	N/A	N/A	N/A	N/A	N/A	N/A	N/A	N/A	1
5	Top housing panel	N/A	N/A	N/A	N/A	N/A	N/A	N/A	N/A	N/A	1
6	Motor	A550-4CE	A550-4CE	A750-4CE	A750-4/6CE	A750-4CE	A750-4/6CE	A750-4CE	A750-4/6CE	A750-4CE	1
7	Motor plate	N/A	N/A	N/A	N/A	N/A	N/A	N/A	N/A	N/A	1
8	V belt, cogged	AX51	AX56	AX56	AX56	AX61	AX61	-	-	AX60	1
10	Fan shaft, 1"	FS7.5	FS7.5	FS7.5	FS7.5	FS7.5	FS7.5	FS7.5	FS7.5	FS7.5	1
11	Large drive pulley	AL94	AK114	AK104	AK104	AL94	AL94	AL94	AL94	AL94	1
12	Horiz. frame piece	N/A	N/A	N/A	N/A	N/A	N/A	N/A	N/A	N/A	1
13	Propeller	9001565	9001398	9001398	9001398	9001489	9001576	9001489	9001576	9001572	1
14	Venturi panel	N/A	N/A	N/A	N/A	N/A	N/A	N/A	N/A	N/A	1
15	Discharge screen	36SCREEN	42SCREEN	42SCREEN	42SCREEN	48SCREEN-N	48SCREEN-N	48SCREEN-N	48SCREEN-N	54SCREEN-N	1
16	Motor pulley	AK3958	AK3058	AK3058	AK3258	AK3258	AK3258	-	-	AK3058	1
17	Frame bracket, sm	N/A	N/A	N/A	N/A	N/A	N/A	N/A	N/A	N/A	2
18	Frame bracket, lg	N/A	N/A	N/A	N/A	N/A	N/A	N/A	N/A	N/A	2
19	Belt tensioner	BTI	BTI	BTI	BTI	BTI	BTI	BTI	BTI	BTI	1
20	Tensioner bracket	N/A	N/A	N/A	N/A	N/A	N/A	N/A	N/A	N/A	1
32	Bearing	UCP205-16	UCP205-16	UCP205-16	UCP205-16	UCP205-16	UCP205-16	UCP205-16	UCP205-16	UCP205-16	2