

Installation Instructions

1470601SSH - 8 ft. Stainless Steel Hydraulic Drive Auger Spreader 2.0 Cubic Yards

Table of Contents

General Information	1
Safety Precautions	1-2
Installation Instructions	1-3
Spreader Operation	4
Spreader Maintenance	4-5
Repair Parts & Drawings	5-7
Warranty Information	8

General Information

Overall Length: 111.75 inches
Overall Width: 48 inches
Overall Height: 32.25 inches
Empty Weight: 740 lbs.
Capacity Struck: 2.0 cu. yd.

Vehicle Requirements

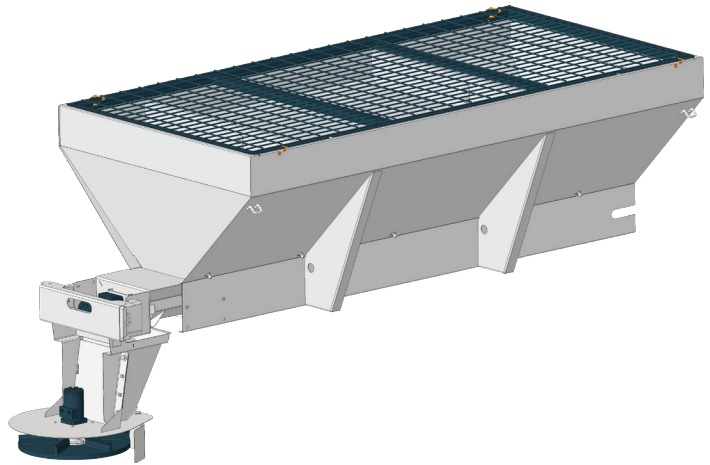
Trucks with minimum GVWR 13,000 lbs. (8 ft. bed), 150 AMP or higher alternator is recommended.

Average Material Weights

This spreader is restricted to the use of dry, free-flowing salt, sand, and sand/salt mix. **Do not** run other materials through the spreader.

Materials to use	Weight (pounds per cubic yard)
Fine Salt-Dry	2,250
Coarse Salt-Dry	1,431
Sand/Salt up to 50/50 Mix-Dry	2,700

Note: To calculate the total spreader weight (including ice control material), add the empty spreader weight plus the ice control material and spreader accessories.



DANGER

This spreader was built to be operated according to the safe operation practices in this manual. As with any type of power equipment, carelessness or error on the part of the operator can result in serious injury. This spreader is capable of amputating hands and feet and throwing objects. Failure to observe the following safety instructions may result in serious injury or death.

WARNING

Improper installation and operation could cause personal injury, and/or property damage. Observe the following Safety Precautions before, during and after operating this spreader. By following these precautions and common sense, possible injury to persons and potential damage to this spreader may be avoided.

CAUTION

Do not overload vehicle beyond the vehicle's GVWR or GAWR. Check vehicle's load rating certification sticker for maximum vehicle capacity.

WARNING

Improper installation and operation could cause personal injury, and/or property damage. Observe the following Safety Precautions before, during and after operating this spreader. By following these precautions and common sense, possible injury to persons and potential damage to this machine may be avoided.

Safety Precautions

1. Read the entire Installation Instructions before operating this spreader.
2. Read and understand all safety decals on the spreader before operating.
3. Check to make sure all safety guards are securely mounted into place before operating this spreader.
4. Verify that all personnel are clear of the spreader spray area before starting or operating this spreader.
5. Do not over-load your vehicle beyond payload limits. If there are any questions, contact the vehicle manufacturer.
6. Do not adjust, clean, lubricate or unclog material jams without first turning off the spreader.
7. Do not climb on or in the spreader during operation. Do not ride on the spreader while the vehicle is in motion.
8. Make sure the spreader is securely fastened to the vehicle in accordance with this manual.
9. Do not operate a spreader that is in need of maintenance or repairs.
10. Do not operate the spreader while ill, tired, or under the influence of alcohol or drugs.

11. Batteries normally produce explosive gases which can cause personal injury. Always disconnect the battery before removing or replacing electrical components.

12. Do not leave unused material in hopper. Material can freeze or solidify, causing spreader to not work properly, and/or damage the unit. Empty and clean after each use.

Safety Symbols

WARNING

It is recommended to install Backup Alarm on trucks to be up fitted with spreaders.

The following pages show safety symbols that may appear on this product. Read and fully understand all safety decals on the spreader before operating the spreader.

⚠ DANGER / PELIGRO






- Read and fully understand Operator's Manual before using this spreader.
- Failure to follow installation and operating instructions may result in serious injury or death!
- Do not climb, sit, walk or ride on conveyor/auger at any time.
- Exposed conveyor/auger and moving parts may cause serious injury or death.
- Disconnect and lock out power before servicing, adjusting or cleaning.
- Keep hands, feet, hair and loose clothing away from moving parts.
- Never remove or modify guards or shields.
- Use care when the spreader is being mounted, dismounted, or stored.





- Lea y entienda completamente el Manual del Operador antes de usar este esparcidor.
- ¡Si no se siguen las instrucciones de instalación y funcionamiento se pueden producir lesiones graves o la muerte!
- No suba, se siente, camine o monte en el transportador/sifin en ningún momento.
- La exposición del transportador/sifin y de las piezas móviles puede producir lesiones graves o la muerte.
- Desconecte y bloquee la energía antes de realizar el mantenimiento, el ajuste o la limpieza.
- Aleje las manos, los pies, el cabello y la ropa holgada de las piezas móviles.
- Nunca quite o modifique los protectores o blindajes.
- Tenga cuidado al montar, desmontar o almacenar el esparcidor.

⚠ WARNING / ADVERTENCIA

<p>DO NOT EXCEED VEHICLE PAYLOAD RATING</p> <ul style="list-style-type: none"> • SALT WEIGHT: 2,160 LBS PER CUBIC YARD • SAND WEIGHT: COURSE DRY 2,565 LBS PER CUBIC YARD • SAND WEIGHT: COURSE WET 3,240 LBS PER CUBIC YARD 	<p>NO EXCEDA LA CAPACIDAD DE CARGA DEL VEHICULO</p> <ul style="list-style-type: none"> • PESO DE LA SAL: 2160 LIBRAS POR YARDA CÚBICA • PESO DE LA ARENA: GRUESA SECA 2565 LIBRAS POR YARDA CÚBICA • PESO DE LA ARENA: GRUESA MOJADA 3240 LIBRAS POR YARDA CÚBICA
--	---

Located On The Rear Of The Spreader

⚠ DANGER / PELIGRO

- Read and fully understand Operator's Manual before using this spreader.
- Failure to follow installation and operating instructions may result in serious injury or death!
- Do not climb, sit, walk or ride on conveyor/auger at any time.
- Exposed conveyor/auger and moving parts may cause serious injury or death.
- Disconnect and lock out power before servicing, adjusting or cleaning.
- Keep hands, feet, hair and loose clothing away from moving parts.
- Never remove or modify guards or shields.
- Use care when the spreader is being mounted, dismounted, or stored.

- Lea y entienda completamente el Manual del Operador antes de usar este esparcidor.
- ¡Si no se siguen las instrucciones de instalación y funcionamiento se pueden producir lesiones graves o la muerte!
- No suba, se siente, camine o monte en el transportador/sifin en ningún momento.
- La exposición del transportador/sifin y de las piezas móviles puede producir lesiones graves o la muerte.
- Desconecte y bloquee la energía antes de realizar el mantenimiento, el ajuste o la limpieza.
- Aleje las manos, los pies, el cabello y la ropa holgada de las piezas móviles.
- Nunca quite o modifique los protectores o blindajes.
- Tenga cuidado al montar, desmontar o almacenar el esparcidor.

Located On Each Side Of The Spreader



⚠ DANGER / PELIGRO

STAY CLEAR OF TURNING SPINNER

MANTÉNGASE LEJOS DEL GIRANDO HILANDERO

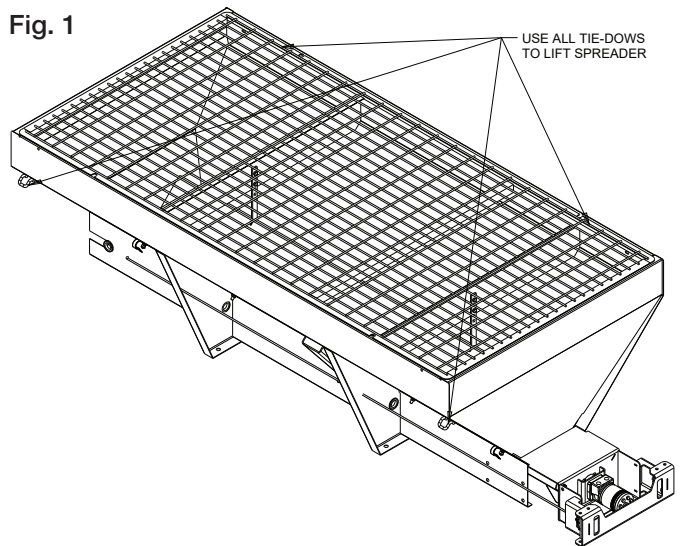
Located on the Rear Chute Assembly / Spinner

Installation Instructions

1. Mounting the Spreader onto the Vehicle

- A.** Remove the tailgate from the vehicle (if equipped) as well as any other object which will interfere with the spreader.
- B.** Remove chute, hardware kit from inside spreader. If spreader has been used make sure there is no material left in the hopper.
- C.** Lift spreader using all tie downs (Fig. 1), or elevate the spreader off the vehicle with lumber. Place lumber under the side gussets of the spreader. This will help with removal of excess material that accumulates under the spreader.

Fig. 1



E. Center the spreader on the truck with the chute mount about 14" to the rear edge of the bed.

F. Chute assembly. Assemble chute to hopper following instructions shown in Fig. 2 – Fig. 3

Fig. 2

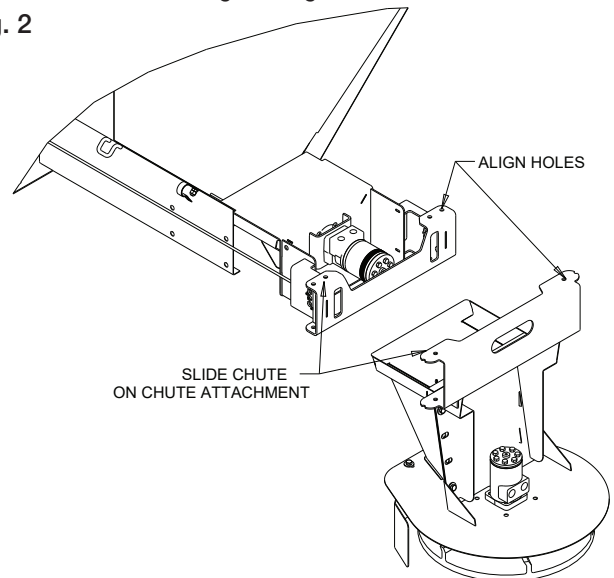
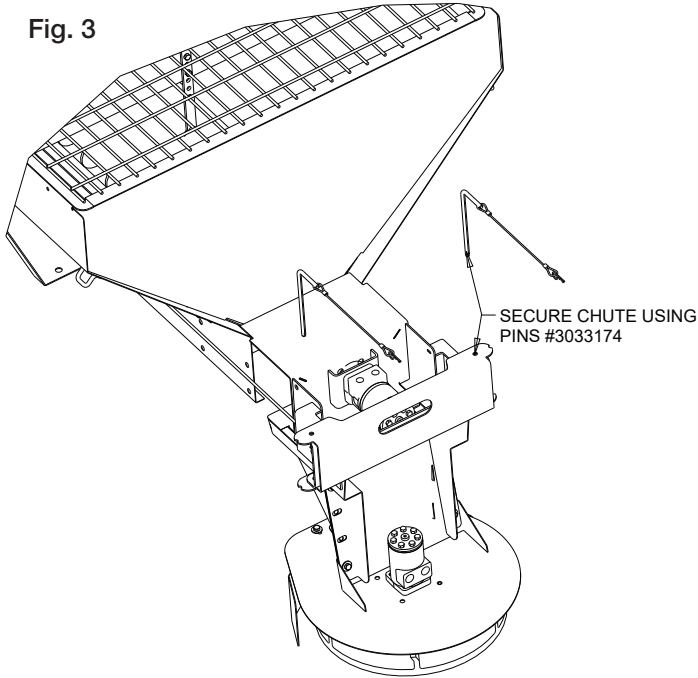
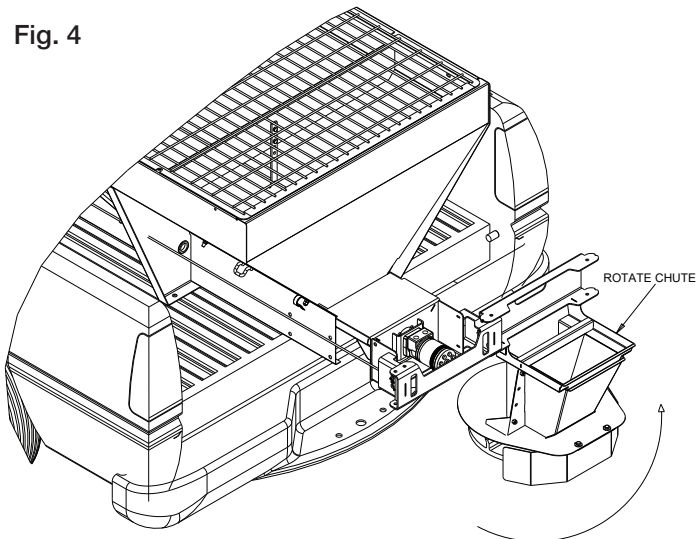


Fig. 3



G. Slide spreader forward or backwards to make sure that chute doesn't interfere with any part of the truck. Remove one pin and rotate chute as shown in Fig. 4. Make sure that chute doesn't hit any part of the truck.

Fig. 4



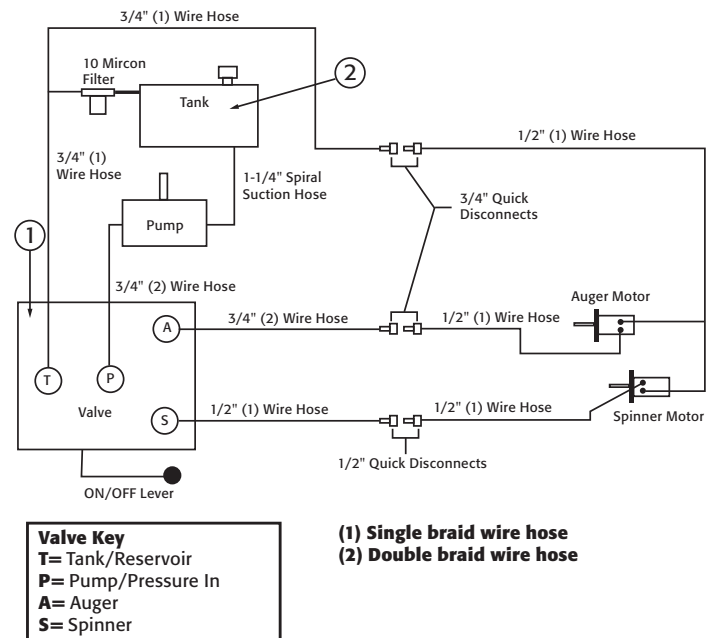
H. Bolt the spreader to the vehicle frame through the lengths of lumber using the holes located in each of the four (4) side gussets. Use 1/2" SAE Grade 5 hardware as required by vehicle application.

I. In addition secure the spreader to the vehicle by attaching the four (4) tie-down eyes located at each corner of the spreader to the vehicle's factory installed anchor points using suitable tie-down devices.

- The spreader must be securely fastened to the frame of the vehicle.
- Verify with the vehicle's manufacturer that the factory installed anchor points are designed for tie-down of such load.
- Periodically check that the spreader mounting hardware is securely tightened, retighten if necessary.

Installation Instructions - Hydraulic Models

1. During assembly take precautions to keep all hydraulic components as clean as possible. See the figure below for hydraulic schematic.
 2. Allow enough hose length to prevent kinking and stretching of the hoses and to permit raising the dump body. Support long hoses with wire ties or clamps.
 3. Protect hoses from wear caused by abrasion and/or vibration.
 4. For proper rotation of the auger and spinner motors, hoses may be reversed. The spinner rotates clockwise when looking down from the top.
- Note: Use of a pipe joint sealant compatible with hydraulic oil is recommended for all screw fittings.**
5. Use swivel type hose adapter fitting ends to connect hoses to flow valve. Damage to valve body may occur if the fittings in flow valve are over tightened.
 6. A 10 micron return line filter is recommended to protect the pump, valve, and motors from wear causing contamination.



Main Components

ITEM	PART NO.	QTY.	DESCRIPTION
1	HV715	1	Dual Flow Regulator Valve
2	-	1	Reservoir 25 Gal Min
N/S	HVC1	1	Dual Flow Regulator Console

Spreader Operation - Hydraulic Models

WARNING

- Before working in or around spreader equipment, be sure all hydraulic controls are moved to OFF position, the PTO must be disengaged (OFF) and the truck engine must be shut off.
- When operating, be sure everyone is standing clear of spreader.
- Be alert for anything that may require shutting down the system.
- Equipment must be started up slowly and watched from a safe distance.

CAUTION

Always follow the following precautions so as not to cause damage to the spreader.

- If the auger does not move because of dense material or a material jam, with the truck off, remove all material from the hopper and free the auger.
- To prevent the auger from freezing, do not store material in the spreader.
- If the material in the hopper freezes, move the spreader into a warm area to thaw.

Initial Priming and Inspecting of the System

1. Make certain the spreader hopper is empty
2. Fill oil reservoir approximately 3/4 full using high grade non-foaming hydraulic oil
3. Be certain the manual spreader valve ON/OFF lever is in the OFF position
4. Start the truck engine
5. Engage PTO and circulate hydraulic oil for several minutes to warm up hydraulic system
6. Position manual spreader valve ON/OFF lever to ON position
7. Rotate the auger control knob and spinner control knob on the manual spreader valve to the desired operating position
8. Check the auger and spinner to see that they are working properly and rotating in the correct direction
 - a. To reverse rotation, switch the hydraulic lines at the motor. Only service your spreader when the truck engine is OFF
9. Shut the truck engine OFF
10. Inspect hydraulic system for leaks
11. Refill oil reservoir to 3/4 full
12. Hydraulic system is now be ready for use

Spreader Start-up

1. Set feed gate opening and baffle positions for desired material flow and spread pattern.
2. Check to make certain that no loose parts or other material are in hopper, chute or on the spinner disk
3. Warm up the hydraulic system
 - a. Start the truck engine
 - b. Engage PTO and circulate hydraulic oil for several minutes
 - c. Position manual spreader valve ON/OFF lever to ON position
 - d. Rotate the auger control knob and spinner control knob on the manual spreader valve to the desired operating position
 - e. Move the ON/OFF lever to the OFF position after warming up the system. Position the spinner and auger control knobs to the desired settings
4. Put spreading material in the V-Box.
5. Changing the auger and spinner speeds as well as adjusting the feed gate and baffle positions will produce various spread patterns.

Operating the Spreader

1. Adjust the internal and external spinner baffles to positions that you have previously determined to give you desired spread pattern.
2. Before each use, warm up the hydraulic system following the procedure described in the Initial Spreader Setup section
3. Valve setting changes may be made with truck in motion
4. Allow Manual Spreader Valve to cool down before moving ON/OFF lever to the OFF position.
5. Moving the Manual Spreader Valve to the OFF position will stop the spinner and auger at the same time without changing their knob/valve settings

CAUTION

Position the valve on/off control lever in the off position when the spreader is not in use or is removed. In the event the valve on/off control lever is left in the on position, a heat problem may occur as the pump continues to pump oil to the hydraulic valve. This could cause a hose to burst spraying hot oil.

Spreader Maintenance

In-Season Maintenance

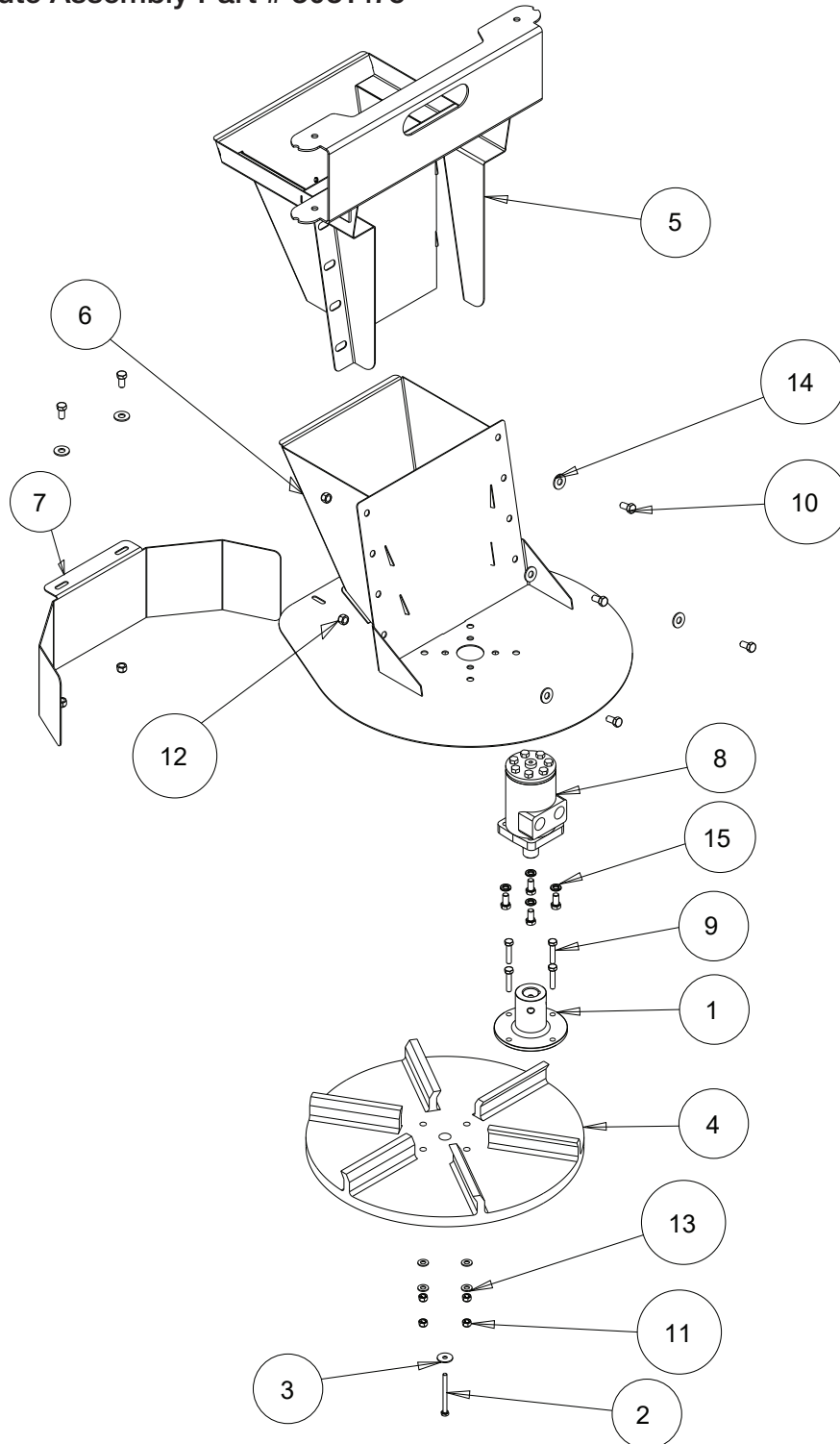
1. Wash spreader after every use. Make sure no material is left under auger/ chain and/or inside trough.
2. Inspect and retighten fasteners after every 7-10 hours of operation. Replace any loose or damaged fasteners.

- 3.** Lubricate your spreader every 7-10 hours of operation and/or following every snow event using a lithium NLGI #2 rated general purpose marine grade grease.
 - a.** Idler Shaft Bearings (2)
 - b.** Drive Shaft Bearing (1)
 - c.** Feed Gate Jack
 - d.** Gearbox Input Shaft (if equipped with a fitting)
 - e.** Check the gearbox oil level and maintain the proper 3/4 full level by adding the appropriate lubricant. Use care to keep contaminants from getting in reservoir when checking and filling.
- 4.** Maintain the oil reservoir approximately 3/4 full using high grade non-foaming hydraulic oil
- 5.** If applicable, use dielectric grease on all electrical connectors before an electrical connection is made or after connector is disconnected
- 6.** It is recommended to cover spreader with the tarp during storage periods.

End of Season / Off-Season Storage Maintenance

- 1.** Wash spreader. Make certain no material or residue is left in or outside the hopper. Thoroughly dry all metal surfaces. Re-paint and oil all previously painted surfaces and auger to protect from rust.
- 2.** Lubricate all bearings (see list above) using lithium NLGI #2 rated general purpose marine grade grease
- 3.** If applicable, inspect wire near connections checking for broken or missing insulation or corroded wires. Trim corroded wires and replace connectors if necessary. Apply dielectric grease on all electrical connections.
- 4.** Store hopper indoors, in a cool, dry place.
- 5.** If applicable, remove controller from truck. Store controller indoors, in a cool, dry place

Repair Parts - Chute Assembly Part # 3031475

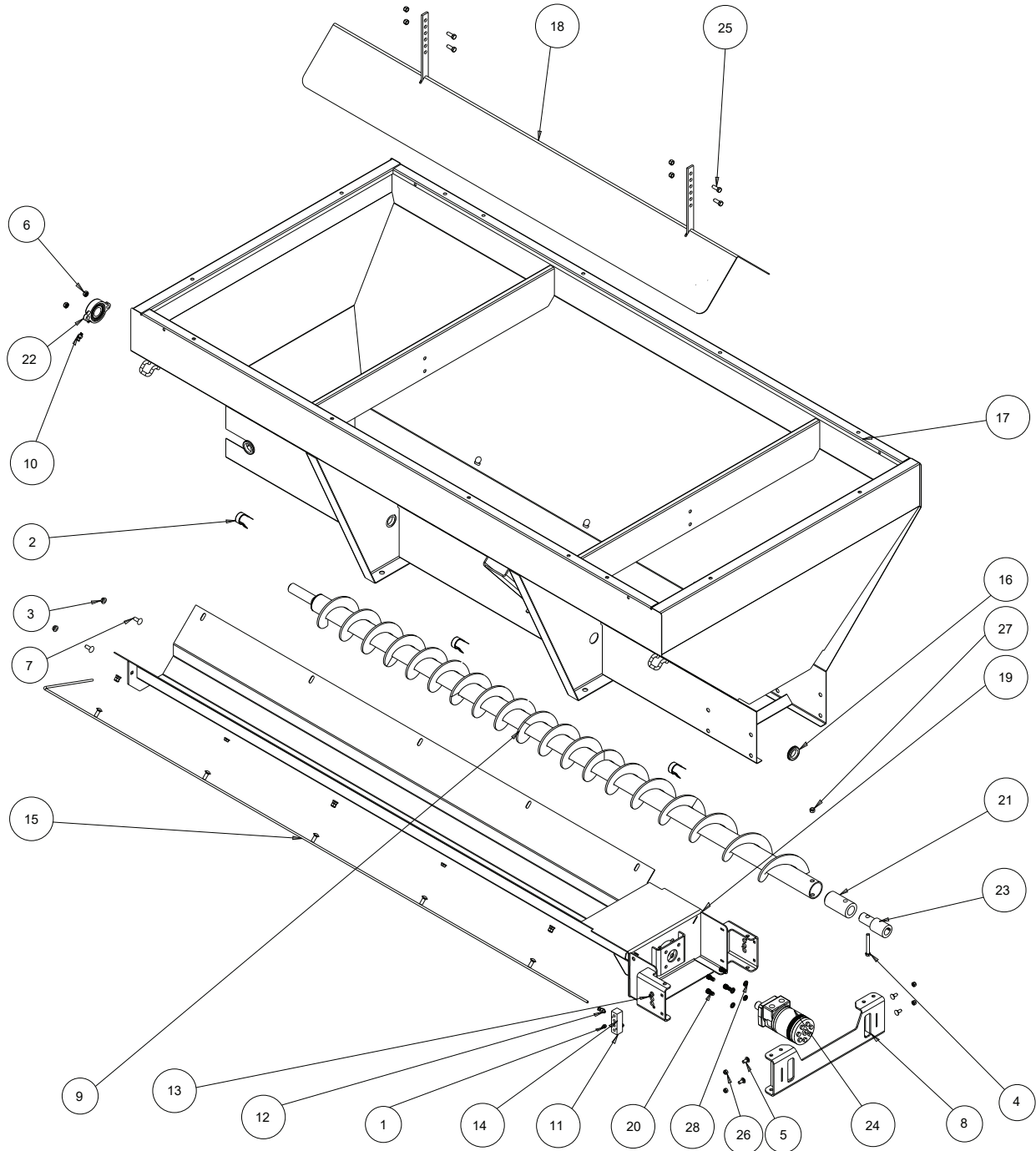


Bill of Materials

ITEM	PART NO.	QTY.	DESCRIPTION
1	3008632	1	HUB, LONG NECK SPINNER
2	3013623	1	SCREW HH CAP 1/4-20 X 3.0 SST
3	3030039	1	WASHER FLAT 1/4 ID 1 OD SST
4	3030179	1	SPINNER 18" POLY CW
5	3030868	1	UPPER CHUTE WELDMENT
6	3052038	1	CHUTE LOWER WELDM
7	3052046	1	SHIELD
8	CM004P	1	MOTOR, HYD 4 BOLT

ITEM	PART NO.	QTY.	DESCRIPTION
9	FCS031018150SS	4	SCREW, HHC 5/16-18 X 1.5 SST
10	FCS038016075SS	10	SCREW, HHC-3/8-16 X 3/4 SST
11	FNE031018034SS	4	NUT, NYLOCK, 5/16-18, GRA, SST
12	FNE038016044SS	6	NUT, NYLOCK 3/8-16 X 7/16 SST
13	FWF031075006SS	4	WASHER, FLAT, 5/16 X .688 X .065, SST
14	FWF038100007SS	6	WASHER, FLAT 3/8 USS SST
15	FWL038069009SS	4	WASHER, LOCK RHS-3/8 SST

Repair Parts - Auger Hopper Assembly

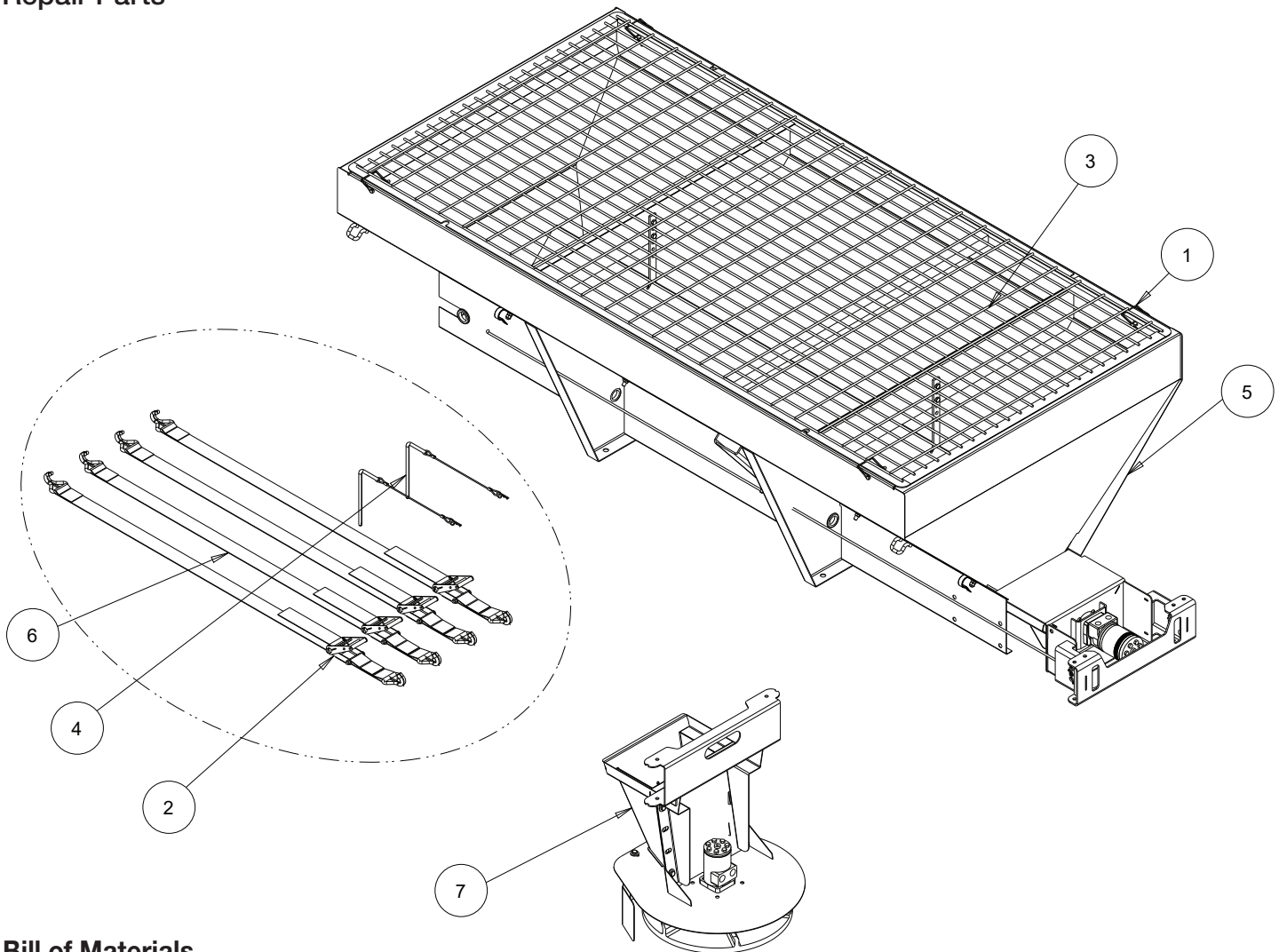


Bill of Materials

ITEM	PART NO.	QTY.	DESCRIPTION
1	800	1	GREASE FITTING, 1/4 STD
2	5000	3	HOSE CLAMP, .375 DIA
3	3001255	12	NUT, HEX FLNG-3/8-16 SST
4	3007068	1	CAP SCREW, HX HD-3/8-16X3 SST
5	3012144	4	BOLT, CARRIAGE, 5/16-18 X 1 SST
6	3014756	2	NUT NYLOCK 7/16-14 SST
7	3014960	12	BOLT, 3/8-16 X 1 CARRIAGE SHORT NECK SST
8	3033076	1	CHUTE ATTACHMENT
9	3033660	1	AUGER PRO2500 5.25 VARIABLE LH
10	3035344	1	GREASE FITTING 1/4TUBE 1/4-28 MALE STRAIGHT
11	3035346	1	RIGHT ANGLE JUNCTION BLOCK
12	3035347	1	GREASE FITTING 1/4TUBE 1/8 NPT STRAIGHT
13	3035357	2	SCREW SOCKET HD, RND 8-32X 1.50 SST
14	3035358	2	NUT, NYLOCK 8-32 SST, BLACK OXIDE

ITEM	PART NO.	QTY.	DESCRIPTION
15	3036016	1	GREASE TUBE FRONT BEARING AUGER
16	3036278	3	GROMMET, 1.50 DIAMETER
17	3044058	1	HOPPER WELDMENT 96 SST
18	3044067	1	INVERTED VEE,WELDMENT
19	3052033	1	TROUGH WELDMENT, SST
20	3052088	4	SCREW SOCK HEAD 3/8-16X .75 SS
21	9240083	1	SLEEVE, AUGER ADAPTER
22	9240086	1	BEARING, 1-1/4 FLANGE 2 HOLE
23	924F0084	1	WELDMENT, UTS ADAPTOR
24	CM074P	1	MOTOR, HYD 4 BOLT 17.9 CI/R
25	FCS038016100SS	4	SCREW, HHC 3/8-16 X 1 304 SST
26	FNE031018034SS	4	NUT, NYLOCK 5/16-18, GR A, SST
27	FNE038016044SS	8	NUT, NYLOCK 3/8-16 X 7/16 SST
28	FWL038069009SS	4	WASHER, LOCK RHS-3/8 SST

Repair Parts



Bill of Materials

ITEM	PART NO.	QTY.	DESCRIPTION
1	66053	4	SNAPPER PIN, 5/16 X 2.75, YLW ZINC
2	149505	1	HOLD DOWN KIT, SPREADER (4 STRAPS)
3	3008186	1	SCREEN, TOP, POLY HOPPER
4	3033174	2	PIN, CHUTE ATTACHMENT
5	3052023	1	HOPPER ASM 2 CU YD SST HYD
6	3052093	1	HARDWARE KIT 1470601SSH
7	3052106	1	CHUTE SWING, ADJUSTABLE, HYD
	3049865	1	DECAL KIT, MID X AUGER
	3021236	1	LABEL, 2IN X 4IN, WEATHERPROOF

SPREADER WARRANTY INFORMATION

This warranty replaces all previous warranties and no employee of this company is authorized to extend additional warranties, or agreements, or implications not explicitly covered herein.

Buyers Products Company warrants all parts of the product to be free from defects in material and workmanship for a period of two (2) years. Parts must be properly installed and used under normal conditions. Normal wear is excluded.

Any part, which has been altered, including modifications, misuse, accident, or lack of maintenance will not be considered under this warranty.

The sole responsibility of Buyers Products Company under this warranty is limited to repairing or replacing any part(s), which are returned, prepaid, 30 days after such defect is discovered, and returned part(s) are found to be defective by Buyers Products Company.

Authorization from Buyers Products Company must be obtained before returning any part. The following information must accompany defective parts returned to Buyers Products Company: RMA #, spreader model, serial number, date installed, and distributor from whom purchased.

Buyers Products Company shall not be liable for damage arising out of failure of any unit to operate properly, or failure, or delay in work, or for any consequential damages. No charges for transportation or labor performed on any part will be allowed under this warranty.