

# BRAVE MBRPE109HB/110HB

MODEL(S):

BRPE109H

BRPE110H

ITEM NUMBER: \_\_\_\_\_

SERIAL NUMBER: \_\_\_\_\_

## Owner's Manual

Instructions for Assembly, Testing, Operation,  
Servicing and Storage

# BRPE109H/110H EdgeScaper

### **▲ WARNING**

**READ and UNDERSTAND this manual completely before using edger.**

All operators of this equipment must read and completely understand all safety information, operating instructions, maintenance and storage instructions. Failure to properly operate and maintain the edger could result in serious injury to the operator and bystanders from moving parts that can crush or cut, flying objects, burns, fire or explosion or carbon monoxide poisoning and be aware of the following hazards.

- **WARNING:** Do not operate machine without rotor hood installed and secure.
- **WARNING:** Do not operate the machine within a 50' radius of people, animals, automobiles or glassed areas which might be damaged or hurt by projectiles.
- **WARNING:** Operator must wear eye protection when operating the machine.
- **WARNING:** Operator must locate and stay clear of all underground gas, electric, water and communications lines before starting edging operation.
- **WARNING:** Beginning the edger operation is the most critical time for dangerous flying projectiles. Be especially cautious by policing the area for rocks or other possible projectiles and ensure the area is completely clear of people, animals, vehicles, etc. that may be damaged by projectiles.
- **WARNING:** If edger strikes an underground object, STOP immediately to determine the object. Investigations should be done visually since touching an exposed wire could be fatal.

### **STOP!**

**ADD OIL TO ENGINE BEFORE USING:** Engine is shipped without oil. DONOT start edger without first adding oil.

**INSPECT COMPONENTS:** Closely inspect to make sure no components are missing or damaged.

See Initial Unpacking and Set-up for instructions and for whom to contact to report missing or damaged parts.

**Any Questions, Comments, Problems or Parts Orders**  
***Call Brave Product Support 1-800-350-8739***

# INTRODUCTION

**CONGRATULATIONS!** You are now the owner of a Brave Edger

READ THIS MANUAL CAREFULLY! This manual will help you learn how to operate and service your Edger correctly. Failure to read and follow the instructions of this manual could result in personal injury or equipment damage. This manual should be considered a permanent part of your Edger. All operators should read and follow these instructions prior to operating the Edger.



# BRAVE

20195 S. Diamond Lake Rd., STE 100  
Rogers, MN 55374  
800-350-8739

# TABLE OF CONTENTS

SAFETY.....	1
OPERATION.....	5
TROUBLESHOOTING.....	7
WARRANTY.....	8
SERVICE.....	10
PARTS LIST.....	11
ASSEMBLY INSTRUCTIONS.....	15

All information, including illustrations and specifications, contained in this manual are based on the latest information available at the time of publication. The right is reserved to make changes, when deemed necessary, without notice.

<b>Brave Edger Specifications</b>			
Engine <sup>w/Oil Alert</sup>	Honda GX160	Blade Guard	Semi-enclosed
Shipped w/	10" Star Blade	Pneumatic Tires	109H - 10" 110H - 9"
Engine Speed	3600 RPM	Max. Curb Height	10"
Fuel Capacity	3.88 Quarts	Bearings	1" Industrial
Drive System	2 Kevlar Belts	Spindle	1" (Hollow)
Frame	10 Gage Steel Plate	Blade Mount	1/2" Grade 8 Bolt
Clutch System	Idler Pulley	Blade & Tool Holder	3" Steel Tubing
Depth Control	Clutch Lever	Dry Weight	115 Pounds
Blade Size	Up to 10"	Warranty:	see page 8

# SAFETY



**WARNING:** "This product contains Benzene and Methyl Isobutyl Ketone, chemicals known to the State of California to cause cancer, birth defects and reproductive harm." For more information go to [www.P65Warnings.ca.gov](http://www.P65Warnings.ca.gov)

## RECOGNIZE SAFETY INFORMATION

This is the safety-alert symbol. When you see this symbol in this manual or on your Edger, be alert to the potential for personal injury.



## UNDERSTAND SIGNAL WORDS

**CAUTION** is used for general reminders of good safety practices



**WARNING** denotes a specific potential hazard.



**DANGER** is the most serious specific potential hazard.



These signal words are used in conjunction with the safety-alert symbol.

## FOLLOW SAFETY INSTRUCTIONS

Read owner/operator manual.  
Replace missing or damaged safety decals. Safety decals and this manual must be considered a permanent part of your Edger. Keep your Edger in proper repair. Safety decals, manuals and replacement parts are available through your Brave dealer. Unauthorized modifications to the Brave Edger are not recommended. This could impair the function, safety, and machine life. For any part of this manual that you do not understand, contact your Brave dealer.



## OPERATE EDGER SAFELY

Do not let anyone operate edger without reading this manual.  
Keep edging area clear of people and pets.  
Wear protective clothing and eye and footwear.  
Do not use edger unless all guards are in place.  
Reduce ground speed on slopes, rough ground, and corners.  
Operate edger from handle bar position only.  
Disengage blade prior to starting engine.  
Do not run engine indoors.  
Do not put hands or feet near or under blade.  
Do not touch muffler or other hot parts.  
Do not lift edger when engine is running.  
Do not leave edger unattended when engine is running.  
Operate edger only in daylight.

---

## WEAR PROTECTIVE CLOTHING

Wear close-fitting clothing appropriate for the job.  
Wear a hearing protective device to protect from loud or uncomfortable noise.  
Wear proper eye protection. Safety goggles are supplied with each Brave Edger.  
Wear appropriate foot wear.  
Wear gloves when changing or replacing blades.



## HANDLE FUEL SAFELY

Fuel is highly flammable. Handle with care.

Stop engine before refueling.

Do not refuel while smoking or near open flames.

Always fill fuel tank outdoors.

Keep edger clean of oil, grease, and dirt.

Clean up spilled fuel immediately.

Never store machine where fumes may reach flame or spark.



## AVOID INJURY FROM THROWN OBJECTS

Before operating edger:

Be sure all guards are in place.

Clear all objects and debris that may be thrown by blade from edging area.

Clear area of people and pets.



# AVOID ROTATING BLADE

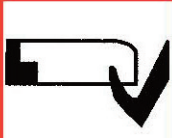

Be sure blade guard is in place.

Do not adjust curb depth while blade is turning.

Do not put hands or feet near blade while engine is running.

## READ AND FOLLOW SAFETY SIGNS

<b>⚠ WARNING</b>	
<b>HELP AVOID INJURY</b>	
<ul style="list-style-type: none"> <li>• Read owners manual</li> <li>• Always wear eye protection</li> <li>• Keep shields in place</li> <li>• Keep others away</li> </ul>	
SD-003	

<b>⚠ DANGER</b>			<b>ROTATING BLADE STAY CLEAR</b>
SD-004			

<b>⚠ WARNING</b>	<b>⚠ ADVERTENCIA</b>
	<b>PELIGRO DE PIEZA EN MOVIMIENTO</b> Para precaverse de lesiones graves o de accidentes mortales que pueden producirse por las piezas en movimiento: ¡ Instalen y aseguren todos los resguardos y cubiertas antes de hacer arrancar la máquina. ¡ Guarden las manos, los pies, el pelo y las ropas alejados de las piezas en movimiento. ¡ Antes de hacer un ajuste o reparación cualquiera, paren y echen el cerrojo al tomafuerza. ¡ El subirse a la máquina cuando funciona está prohibido.
<b>MOVING PART HAZARD</b> To prevent serious injury or death from moving parts: ¡ Close and secure guards and shields before starting. ¡ Keep hand, feet, hair and clothing away from moving parts. ¡ Disconnect and lockout power source before adjusting or servicing. ¡ Do not stand or climb on machine when operating.	<b>⚠ AVERTISSEMENT</b>
	<b>PIÈCE EN MOUVEMENT</b> Dans le but de prévenir les blessures graves ou la mort pouvant être causées par les pièces en mouvement: ¡ Poser et fixer tous les gardes et capots avant de mettre la machine en marche. ¡ Garder les mains, les pieds, les cheveux et les vêtements loin des pièces en mouvement. ¡ Avant de procéder à l'entretien ou au réglage, désengager et verrouiller la prise de force. ¡ Il est interdit de monter sur la machine quand elle est en marche.

# OPERATING INSTRUCTIONS



**CAUTION:** The EdgeScaper is shipped without oil in the engine. Oil must be added before starting engine. See engine manual for oil type.



**WARNING: GASOLINE IS EXTREMELY FLAMMABLE AND IS EXPLOSIVE UNDER CERTAIN CONDITIONS.**

**NOTE:** FOR FURTHER INFORMATION CONCERNING THE SAFETY, OPERATING, MAINTENANCE, ETC. OF THE PARTICULAR ENGINE SUPPLIED WITH YOUR BRAVE EDGER, SEE THE ENGINE OWNER'S MANUAL THAT IS SUPPLIED TO YOU WITH THE EDGER.

## BEFORE STARTING ENGINE

### 1. CHECK MACHINE

- A. Read and be familiar with equipment operating instructions.
- B. Be sure you have the proper blade for your edging purpose. The EdgeScaper will accommodate blades up to 10" long. The blade must have a 1/2" arbor hole.
- C. Check blade retaining nut for tightness. Tighten blades hand tight with an eight inch wrench. Do not overtighten nut if an impact wrench is used.
- D. Be sure belt and pulleys are properly aligned and adjusted. Be sure belt stops are properly adjusted.
- E. Check blade guard for proper alignment and tightness.
- F. Check all other nuts and bolts for tightness.

### 2. CHECK ENGINE

- A. Read and be familiar with manufacturer's operating and safety instructions for engine.
- B. Check oil level and add if necessary. Do not over-fill.
- C. Check air filter and clean frequently.
- D. Use only clean fuel. Unleaded fuel is recommended in all engines.
- E. Be sure muffler and exhaust deflector are installed, are in proper position, and are in good operating condition.

### **3. START ENGINE**

- A. Be sure belt tensioner is in disengaged position and that no tension is on the belt.
- B. Turn ignition to "ON" position.
- C. Close choke if engine is cold.
- D. Pull start cord rapidly.
- E. As the engine warms, gradually move the choke lever to the "OPEN" position.



**WARNING:** Do not operate the machine until area is cleared of people, pets, automobiles, etc. that might be damaged by projectiles.



**WARNING!** Do not operate machine without blade guard in place.



**WARNING!** Operator must wear eye protection when operating the Edger. (Eye goggles are provided with each machine.)

### **4. ENGAGE BLADE / SET CUTTING DEPTH**



**CAUTION!** Blade will begin to turn when the belt tensioner lever is moved forward.

- A. Move belt tensioner lever forward to tighten belt and set cutting depth.
- B. Insert locking pin into appropriate hole for desired cutting depth.

### **5. ADJUST CURB HEIGHT**



**CAUTION!** adjust curb height before starting engine.

- A. Place left rear tire of edger on the curb.
- B. Loosen adjustment handle on front wheel assembly and right rear wheel assembly.
- C. Lift edger frame to level position by pushing the handle to the left until frame is level.
- D. Re-tighten wheel adjusting handles (The edger will work on curbs up to 10" high.)
- E. Proceed with operating procedures.

## TROUBLESHOOTING

PROBLEM	CAUSE	SOLUTION
A. Engine does not start.	1. Engine switch in "OFF" position. 2. Engine flooded.  3. Out of fuel. 4. Spark plug wire loose or disconnected 5. Defective spark plug.	1. Switch to "ON" position. 2. Open choke completely. 3. Fill fuel tank. 4. Reconnect wire  5. Replace spark plug.
B. Other engine problems.	1. -----	1. See engine owner manual.
C. Burning belts.	1. Pulleys worn excessively. 2. Pulleys out of alignment.	1. Replace pulley 2. Realign pulley
D. Excessive vibration.	1. Blade bent or broken. 2. Blade bearings worn.	1. Replace blade. 2. Replace bearings



20195 South Diamond Lake Road, Suite 100 • Rogers, MN 55374  
 Toll-Free: 800-350-8739 • Website: braveproducts.com • Email: sales@braveproducts.com

**Dear Valued Customer:**

The Brave product you just purchased is built with the finest material and craftsmanship. Use this product properly and enjoy the benefits from its high performance. By purchasing a Brave product, you show a desire for quality and durability. Like all mechanical equipment this unit requires a due amount of care. Treat this unit like the high quality piece of machinery it is. Neglect and improper handling may impair its performance.

Thoroughly read the instructions and understand the operation before using your product. Always contact Brave Product Support at 1-800-350-8739 prior to having any service or warranty work performed, as some services performed by parties other than Brave approved service centers may void this warranty. This limited warranty is in lieu of any other warranty expressed or implied, written or oral and Brave assumes no other responsibility or liability outside that expressed within this limited warranty.

**Limited Warranty for Brave Edgers**

**Models:**

**BRPE110H**

**BRPE109H**

	<b>Consumer Warranty Period</b>	<b>Commercial Warranty Period</b>
<b>Weldments</b>	2 years from date of purchase by user	2 year from date of purchase by user
<b>Wear Parts</b>	In addition to the normal warranty, Brave shall warrant some normal wear items from defects in material or workmanship for a period of 30 days from the date of purchase by user. Normal wear items covered under this warranty are limited to: High impact wear related components such as standard retention hardware for wear items, bearings, belts and bushings, drive and driven pulleys, blades. Routine maintenance items such as lubricants, clutch adjustments, tune ups are not covered under warranty.	
<b>Engines</b>	The engine warranty is covered under the terms and conditions as outlined by the engine manufactures warranty contained herein and is the sole responsibility of the engine manufacturer. Normal engine maintenance such as spark plugs, oil changes, air filters, adjustments, fuel system cleaning and obstruction due to build up is not covered by this Brave limited warranty.	

“**Consumer use**” means personal residential household use by a consumer. “**Commercial use**” means all other uses, including, but not limited to, use for commercial, income producing or rental purposes or when purchased by a business.

This limited warranty applies to the original purchaser of the equipment (verification of purchase, in the form of a receipt, is the responsibility of the buyer), is non-transferable, and covers parts and labor. Parts will be replaced or repaired at no charge, except when the equipment has failed due to lack of proper maintenance. If a part is no longer available, the part may be replaced with a similar part of equal function. Any misuse, abuse, alteration or improper installation or operations will void warranty. Determining whether a part is to be replaced or repaired is the sole decision of Brave. Brave will not provide for replacement of complete products due to defective parts. Any costs incurred due to replacement or repair of items outside of a Brave approved facility is the responsibility of the buyer and not covered under warranty. Transportation costs to and from service center and/or service calls are the responsibility of the customer.

This limited warranty specifically excludes the following; failure of parts due to damage caused by accident, fire, flood, windstorm, acts of God, applications not approved by Brave in writing, corrosion caused by chemicals, use of replacement parts which do not conform to manufacturer’s specifications, damage related to rodent and/or insect infestation and damage caused by vandalism. Additional exclusions: loss of running time, inconvenience, loss of income, or loss of use, including any implied warranty of merchantability of fitness for a specific use. Also, outdoor power equipment needs periodic parts and service to perform well, and this limited warranty does not cover instances when normal use has exhausted the life of a component or the engine.

This limited warranty does not cover any personal injury or damage to surrounding property caused by failure of any part, misuse or inability to use the product. Alteration of the product, including safety features, shall void this limited warranty.

Repair or replacement of parts does not extend the warranty period. This limited warranty gives you specific legal rights. You may also have other rights that vary by state. Please have model number, item number and serial number on hand prior to making a warranty claim or inquiry.



**Brave  
Product Registration Form**

**YOUR INFORMATION**

**Full Name:**

\_\_\_\_\_  
Last First M.I.

**Address:**

\_\_\_\_\_  
Street Address Apartment/Unit #

\_\_\_\_\_  
City State ZIP Code

**Home Phone:**

\_\_\_\_\_

**Alternate  
Phone:**

\_\_\_\_\_

**Email**

\_\_\_\_\_

**PURCHASED FROM**

**Company:**

\_\_\_\_\_

**Address:**

\_\_\_\_\_  
Street Address Apartment/Unit #

\_\_\_\_\_  
City State ZIP Code

**MODEL INFORMATION**

**Purchase Date**

\_\_\_\_\_

**Application Type**

Homeowner

Commercial

Rental

**Model** (i.e. BRPT704H)

**Serial #** (i.e. 123456)

**Signature**

\_\_\_\_\_

*Register your product online at [www.braveproducts.com](http://www.braveproducts.com)*

# SERVICE

## 1. ENGINE SERVICE

- A. See owner's manual for service, maintenance requirements and procedures for engine.

## 2. EDGER SERVICE

- A. Check all nuts and bolts for proper tightness before initial operation and periodically thereafter.
- B. Check blade periodically. If worn excessively, replace.
- C. Check belt for wear. If necessary, replace.
- D. Check tension on belt and adjust if necessary.



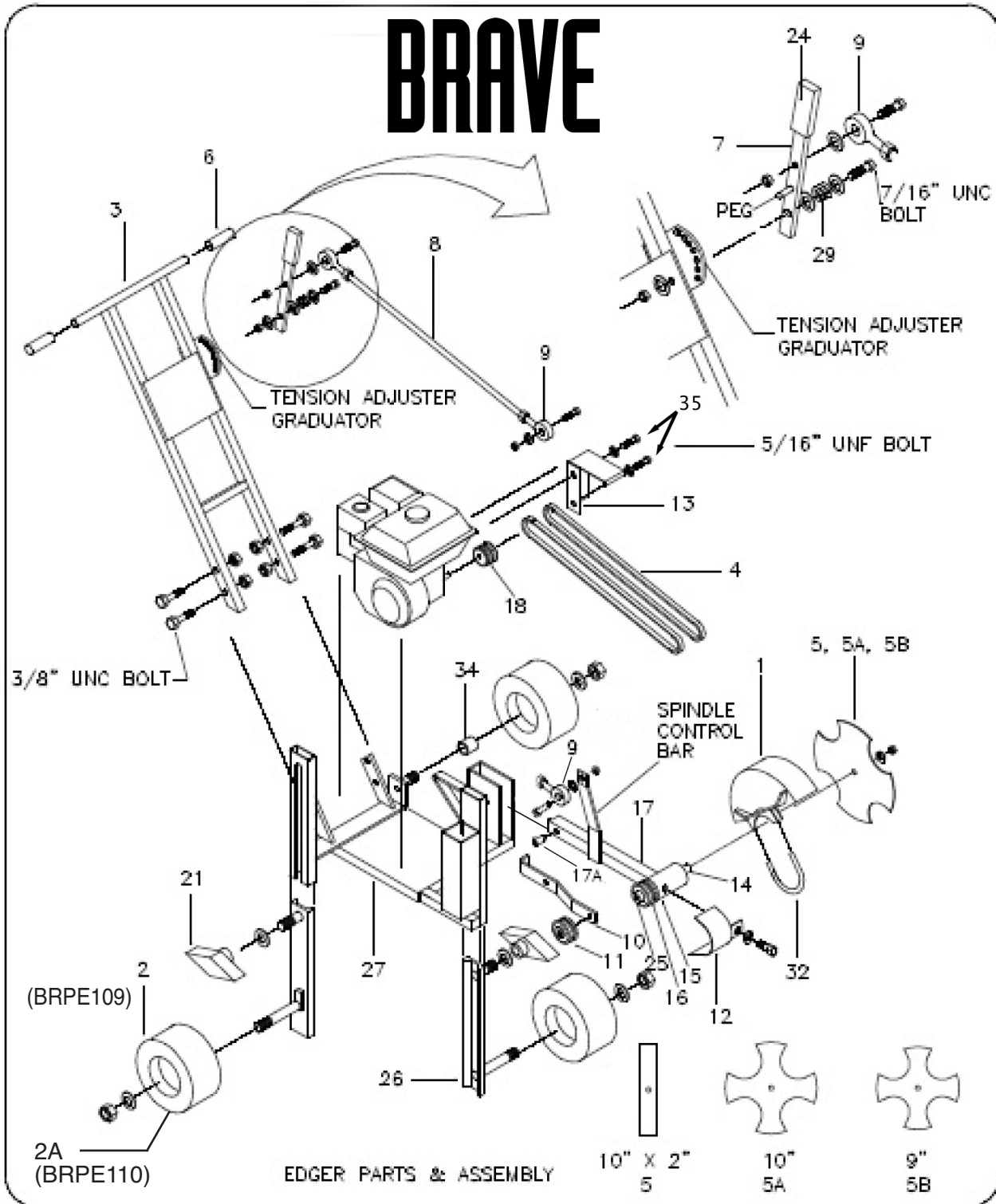
**WARNING! MAKE CERTAIN THAT BLADE BOLT AND NUT ARE TIGHT AND IN GOOD CONDITION. INSPECT FREQUENTLY.**

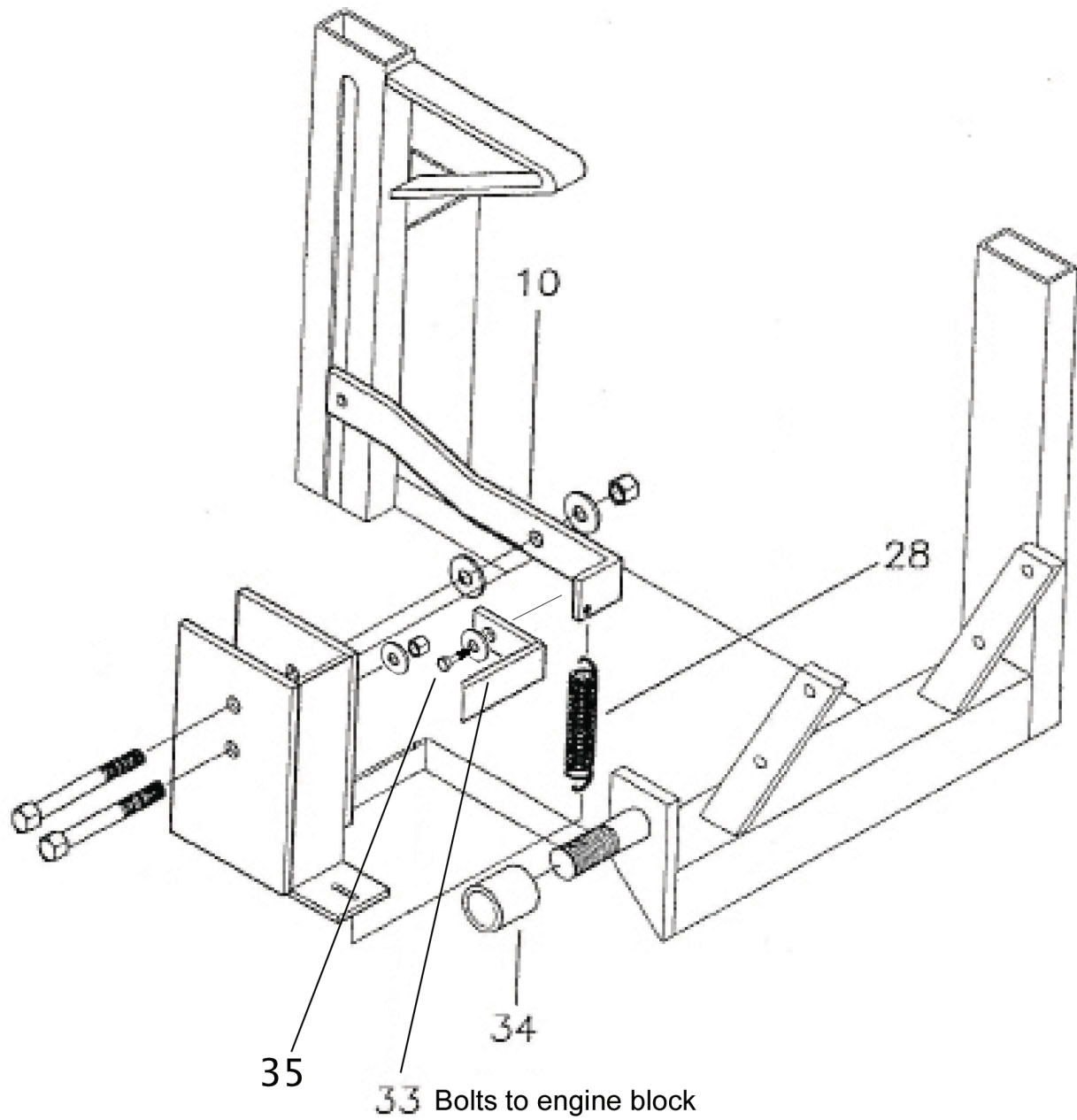
## BRPE109/110 PARTS LIST

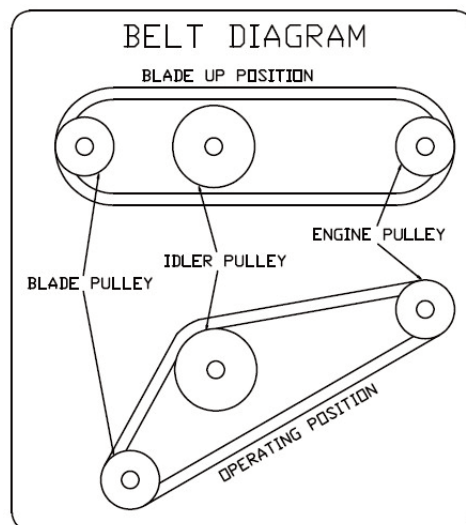
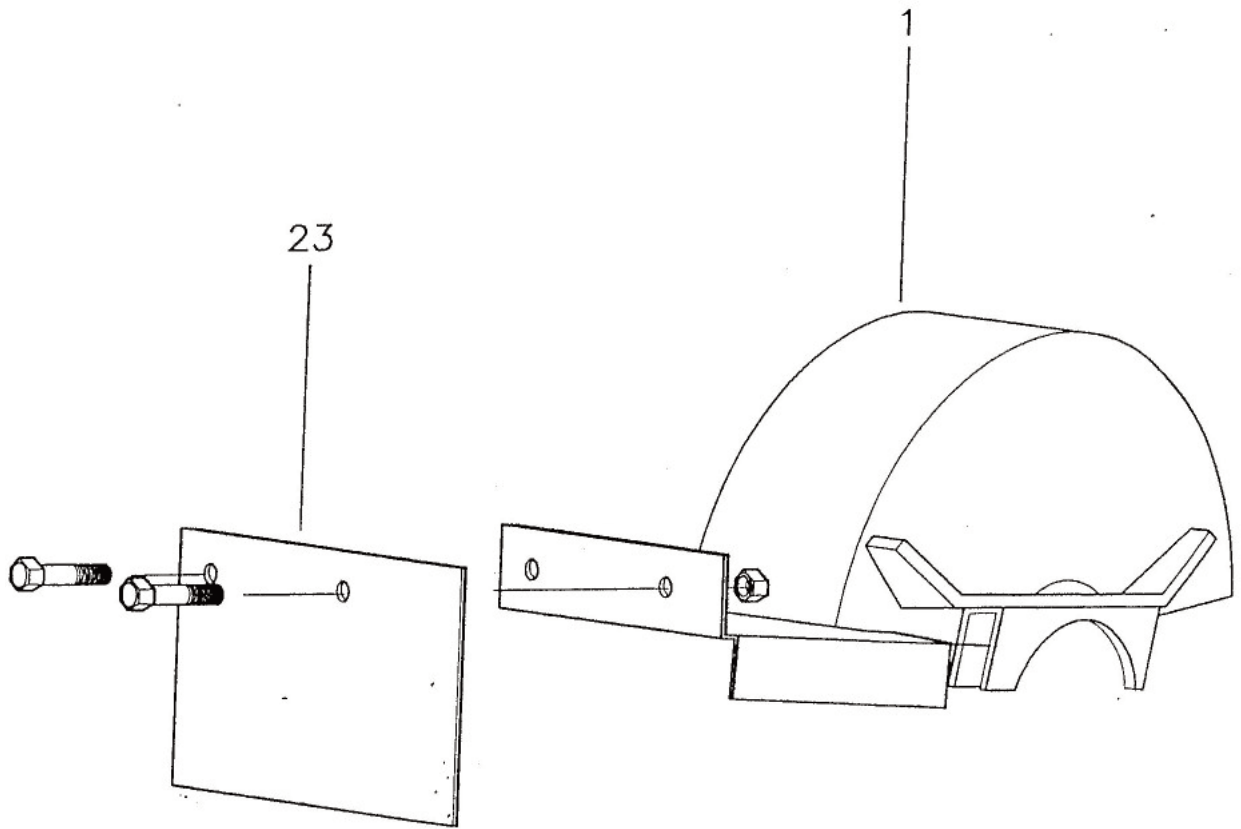
REF. NO.	PART NO.	DESCRIPTION	NO. REQ.
1	E-100-001	GUARD, BLADE 10"	1
2	12-32A	TIRE & WHEEL ASSY. 10" (BRPE109)	3
2A	702-50C	TIRE & WHEEL ASSY. 9" (BRPE110)	3
3	E-100-003	HANDLE ASSY.	1
4	E-200-002	BELT	2
5	E-100-005	BLADE, EDGER, 10"	1
5A	E200-029-10	BLADE, EDGER, 10" STAR	
5B	E200-029-09	BLADE, EDGER, 9" STAR	
6	12-02	HANDLE GRIP	2
7	E-100-07	LEVER, BELT TENSIONER/DEPTH CONTROL	1
8	E-200-008	ROD, BELT TENSIONER CONTROL	1
9	E-100-009	ROD END	2
10	E-200-010	IDLER ARM	1
11	12-22-2	PULLEY, IDLER	1
12	E-100-012-2	BELT GUARD (FRONT)	1
13	E-200-013	BELT GUARD (REAR)	1
14	E-200-014	BLADE BOLT ASSY. (1/2" X 8 1/2" Gr. 8 w/ lock nut)	1
15	12-16	SPINDLE BEARING	2
16	780-09	PULLEY, SPINDLE	1
17	E-200-017	SPINDLE ARM	1
17A	E-200-018	BUSHING	1
18	701-02-2	PULLEY, ENGINE	1
19 & 20		NOT USED	
NS	E-100-020	DECAL, WARNING	2
NS	E-100-021	DECAL, DANGER	1
21	991-10	WHEEL ADJUSTING HANDLE	2
22		NOT USED	
23	E-200-025	RUBBER FLAP	1
24	E-100-026	HANDLE GRIP, LEVER	1
25	E-200-027	SPINDLE	1
26	E-100-031	INNER WHEEL SLIDE	2
27	BRE-200-032	FRAME	1
28	12-05	SPRING, IDLER ARM	1
29	E-100-036	SPRING, LEVER	1
NS	12-19	1/4" x 1 1/2" KEY, SPINDLE PULLEY	1
NS	E-100-038	3/16" x 1 1/4" KEY, ENGINE PULLEY	1
32	E-100-039	BLADE GUARD CLAMP	1
33	E-200-040	BELT STOP, L-SHAPED	1
34	E-200-041	SPACER, WHEEL, LH and/or RH	2
35	HC55F12Z	Bolt, 5/16" -24 x 3/4" (Fine Thread)(Requires 5/16" lock washer)	3

\* NS = Not Shown

# BRPE







Refer to references and drawing on pages 11 and 12.  
Bolts, nuts and washers provided.

**STEP 1 :**

Bolt the handle (3) onto the frame using four 3/8" x 2" bolts and 3/8" nylon lock nuts.

**STEP 2 :**

Raise or lower the spindle arm assembly (17) until it is parallel to the ground. Place some object under the bearing housing to temporarily hold the housing assembly in place while attaching the belt tensioner control rod.

**STEP 3 :**

Install the belt tensioner control rod (8) by attaching the control rod end (9) through the 1/2" hole located on the belt tensioner lever (7) using a 7/16" x 1 1/2" bolt, 7/16" lock washer and 7/16" nylon lock nut. This 7/16" lock washer also serves as a spacer between the tensioner lever (7) and the control rod end (9). The control rod end (9) should be mounted onto the outer side of the handle.

**STEP 4 :**

Place the belt tensioner lever (7) in the uppermost position on the tensioner adjuster graduator.

**STEP 5 :**

Attach the lower lower control rod end (9) to the inner side of the spindle control bar using a 7/16" x 1 1/2" bolt, 7/16" lock washer and a 7/16" nylon lock nut. This 7/16" lock washer also serves as a spacer between the spindle control bar and the control rod end.

**STEP 6 :**

Adjustments may need to be made to the tensioner control rod by turning the control rod ends to either lengthen or shorten the tensioner control rod as needed to maintain the spindle arm assembly in a near level position and to insure that the idler pulley is not touching the belts. Remove the object being used to maintain the spindle arm in a near level position. Spindle arm should remain near level. Tighten the lock nuts on the rod ends and the bolts securing the rod ends to the machine.

(Continued on next page)

**STEP 7 :**

Add unleaded gasoline and oil as directed in the engine manual. Read engine and Edger operating instructions before operating.

# **BRAVE**

20195 S. Diamond Lake Rd, Ste 100  
Rogers, MN 55374  
1-800-350-8739