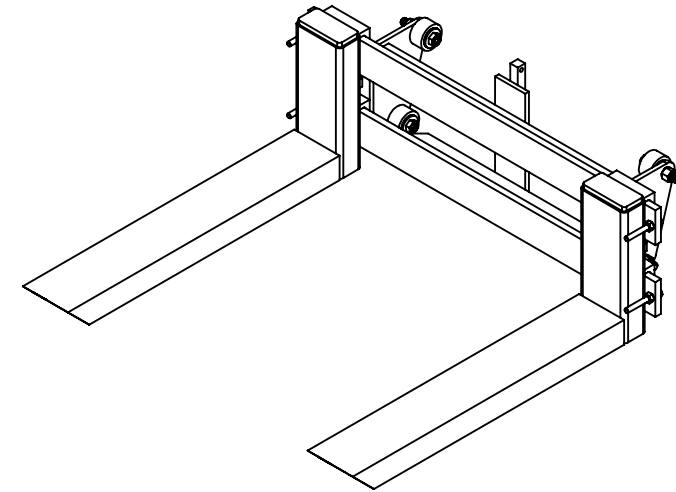
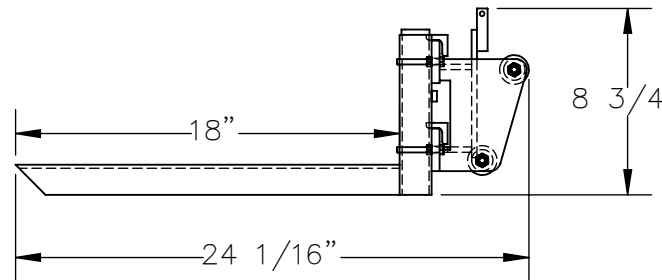
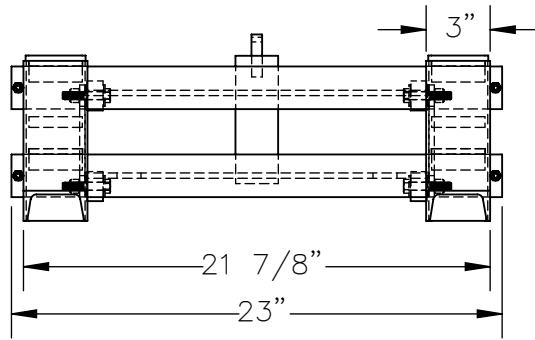


STEEL ADJUSTABLE FORKS ATTACHMENT - HYDRA-AF-18

APPROX WEIGHT: 36.09 lbs.
DOES NOT INCLUDE WEIGHT OF POWER OR PACKAGING!!!

*** ANY ADDITIONS, DELETIONS, OR OMISSIONS MUST BE CORRECTED ON THIS DRAWING AS THIS DRAWING WILL BE CONSIDERED ALL INCLUSIVE ***

ALL GRAPHICS PROVIDED ARE FOR REFERENCE ONLY. IF CERTAIN DIMENSIONS ARE CRITICAL PLEASE VERIFY THOSE DIMENSIONS WITH YOUR SALESPERSON



DIMENSION TOLERANCE $\pm 1/4$ "

STANDARD FEATURES

- MODEL NUMBER IS HYDRA-AF-18
- OVERALL HEIGHT IS 8 3/4"
- OVERALL WIDTH IS 23"
- OVERALL LENGTH IS 24 1/16"
- USABLE LENGTH IS 18"
- FORK WIDTH IS 3"
- MAX FORK OD IS 21 7/8"
- MAX CAPACITY IS 1,000 LBS
- DURABLE BAKED IN POWDER COATED BLACK FINISH

SPECIAL FEATURES

NONE

A P P R O V A L	I, THE UNDERSIGNED, AGREE THAT THE PRODUCT AS REPRESENTED SATISFIES DESIGN AND DIMENSION REQUIREMENTS. I ALSO ACKNOWLEDGE MY DUTY TO CONFIRM PRODUCT AND INSTALLATION COMPLIANCE WITH ALL APPLICABLE FEDERAL, STATE AND LOCAL REGULATIONS AND STANDARDS.	
	UNITS REQUIRING APPROVAL DRAWINGS OR MODIFIED ARE NON-RETURNABLE	
	[] As drawn	[] As marked
Signed: _____		Date: _____
Printed Name: _____		
<i>LEAD TIME WILL START UPON RECEIPT OF SIGNED APPROVAL DRAWING</i>		

DISTRIBUTOR'S NAME:		P.O.#
VESTIL MANUFACTURING		X
		W.O.#
		X
DRAWN BY:	DATE:	SALES:
AJS	11/08/24	X
REFERENCE:	SCALE:	FILE NAME:
X	1:9	
QUOTED LEAD TIME:	QUOTE #	
X	X	21-007-001