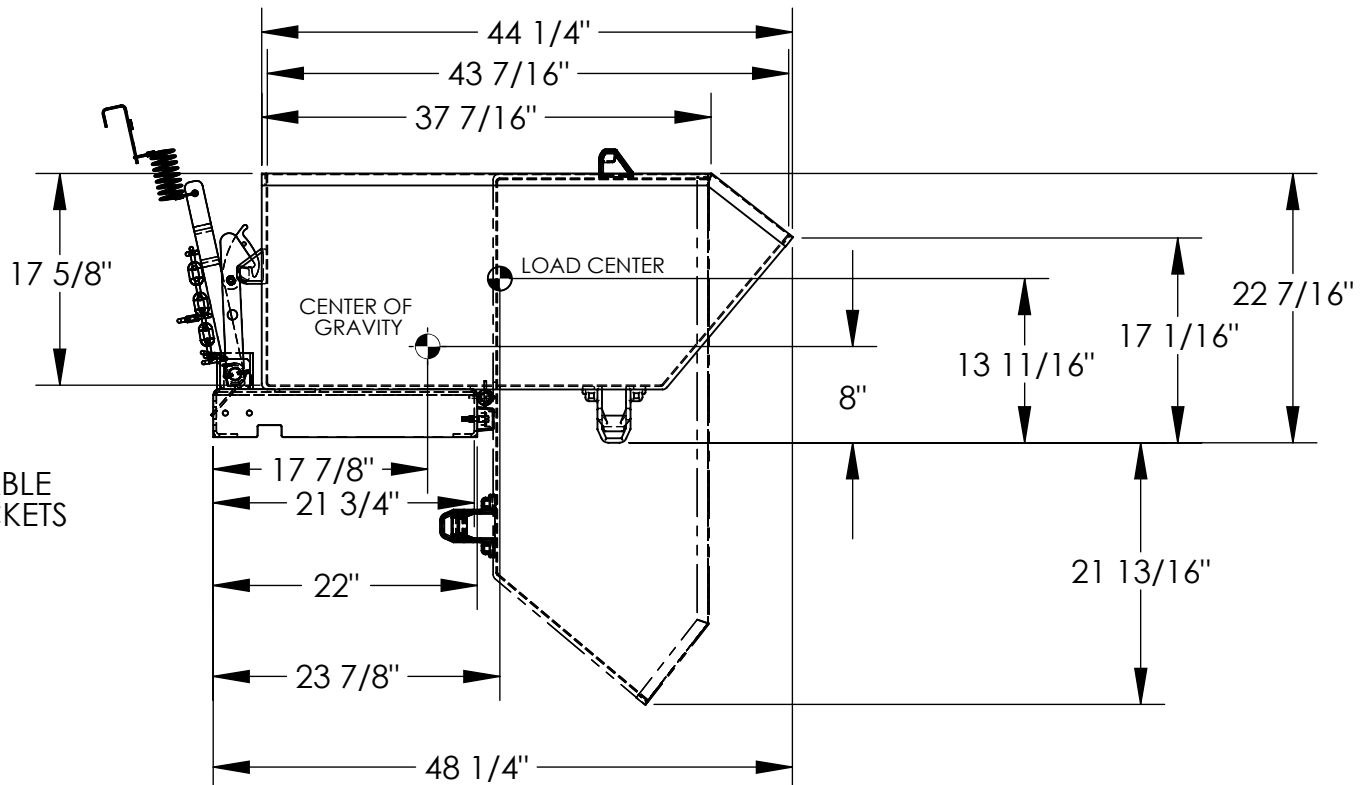
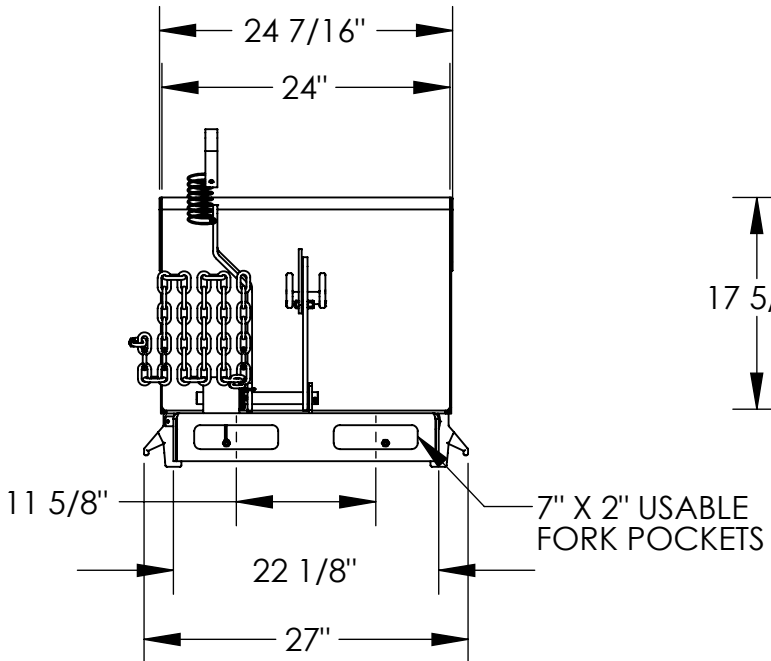


# LOW PROFILE 90° SELF DUMPING HOPPER - H-33-LD

APPROX WEIGHT: 188.85 lbs.  
 DOES NOT INCLUDE WEIGHT OF POWER OR PACKAGING!!!

\*\*\* ANY ADDITIONS, DELETIONS, OR OMISSIONS MUST BE CORRECTED ON THIS DRAWING AS THIS DRAWING WILL BE CONSIDERED ALL INCLUSIVE \*\*\*

ALL GRAPHICS PROVIDED ARE FOR REFERENCE ONLY. IF CERTAIN DIMENSIONS ARE CRITICAL PLEASE VERIFY THOSE DIMENSIONS WITH YOUR SALESPERSON



\*\* ADDITION OF CASTERS MAY CHANGE WEIGHT CAPACITY BASED ON CASTER RATING

## STANDARD FEATURES

MODEL NUMBER: H-33-LD  
 OVERALL WIDTH: 27"  
 OVERALL LENGTH: 48 1/4"  
 OVERALL HEIGHT: 22 7/16"  
 BIN INSIDE WIDTH 24"  
 BIN INSIDE LENGTH 43 7/16"  
 BIN INSIDE HEIGHT 17 5/8"  
 CAPACITY: 2,000 LBS.  
 VOLUME: 1/3 CU. YRD.  
 DURABLE BAKED IN POWDER COATED BLUE FINISH

APPROX. WEIGHT / LOST LOAD = 188.85  
 MINIMUM EFFECTIVE THICKNESS =  
 VERTICAL CENTER OF GRAVITY = 8"  
 HORIZONTAL CENTER OF GRAVITY = 17 7/8"

NEVER EXCEED LOAD CENTER RATING PER FORKTRUCK MANUFACTURERS GUIDELINES.

DO NOT USE THIS FORK TRUCK ATTACHMENT IF LOAD WILL EXCEED FORK TRUCK MANUFACTURER'S LOAD CENTER RATING

## SPECIAL FEATURES

NONE

DIMENSION TOLERANCE ± 1/4"

<b>APPROVAL</b>	I, THE UNDERSIGNED, AGREE THAT THE PRODUCT AS REPRESENTED SATISFIES DESIGN AND DIMENSION REQUIREMENTS. I ALSO ACKNOWLEDGE MY DUTY TO CONFIRM PRODUCT AND INSTALLATION COMPLIANCE WITH ALL APPLICABLE FEDERAL, STATE AND LOCAL REGULATIONS AND STANDARDS.	
	<b>UNITS REQUIRING APPROVAL DRAWINGS OR MODIFIED ARE NON-RETURNABLE</b>	
	[ ] As drawn      [ ] As marked	
	Signed: _____	Date: _____
Printed Name: _____		LEAD TIME WILL START UPON RECEIPT OF SIGNED APPROVAL DRAWING

DISTRIBUTOR'S NAME:		P.O.#
<b>VESTIL MANUFACTURING</b>		X
		W.O.#
DRAWN BY: JWW	DATE: 9/28/2020	X
REFERENCE: X	SCALE: 1:16	FILE NAME:
QUOTED LEAD TIME: X	QUOTE # X	37-007-147