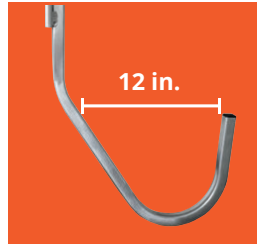


KAYAK RACK SET



INSTALLATION TYPES

- > This set of supports is designed for installation on a fixed dock with piles spaced between 6' and 8' apart. These brackets can be installed either inside or outside of the dock.
- > For installation on a floating aluminum dock, you will need to add two 4 ft. posts in the corner leg holders.
- > For a wood dock, you will need to purchase 2 steel leg holders and posts. You will then be able to install the racks for your kayak.
- > Of course, posts can also be pounded directly in the ground on the beach.

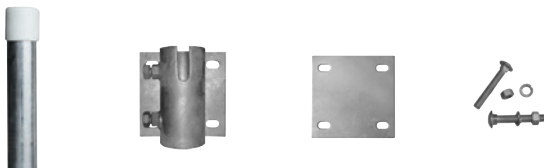
3-STEP INSTALLATION

- > Evaluate the ideal height for the kayak ; slide the supports on the poles and lightly tighten the set screws with an Allen wrench.
- > Validate the positioning with your kayak. Adjust the level of the 2 brackets as needed.
- > Tighten until the screw is properly seated on the post. Don't over tighten.

SUGGESTED ADDITIONAL PRODUCTS ACCORDING TO THE TYPE OF INSTALLATION :

- > Posts with outside diameter from 1-1/2" to 2" max.
- > Steel leg holders with back plates #19111
- > 3/8" carriage bolts with lock washers and nuts (#10200)
- > Pile caps #15025 (white) or #15055 (black) in pack of 2

36 in. post
11007



SUGGESTED COMPLEMENTARY PRODUCT :

Wall mount storage brackets for Kayak or SUP Racks
Item #22023 (pair)



Kit includes :

- 2x aluminum supports with post brackets
- 4x 1/2" set screws
- 4x black plastic square caps

Tools needed :

- 1/4" Allen wrench
- Tape measure

