

PW SERIES

Direct drive pressure blower for high static applications.

Ideal for moving non-abrasive particles such as dust or fume exhaust.



FEATURES

- Wheels are constructed of heavy cast aluminum with straight radial blades.
- Wheels are self cleaning, dynamically balanced and designed for efficient operations.
- Welded 16 gauge steel housings and motor bases.
- TEFC motors are standard.
- Comes as clockwise rotation, bottom horizontal discharge (can be rotated at 45°+ increments).

PERFORMANCE SPECIFICATIONS

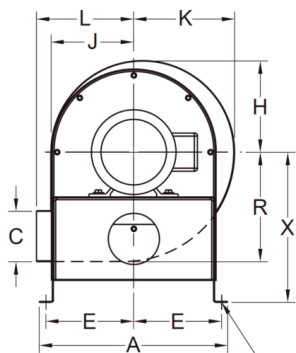
MODEL			HP	MOTOR FRAME	RPM	CFM @ STATIC PRESSURE												dBA @ 5 FT			
SINGLE PHASE	THREE PHASE 230/460V	THREE PHASE 575V				1/4"	1/2"	1"	1 1/2"	2"	2 1/2"	3"	3 1/2"	4"	5"	6"	7"		8"	9"	10"
PW-8S	PW-8M	PW-8P	1/3	56	3500	281	263	236	210	182	153	119	79	--	--	--	--	--	--	--	74
PW-9S	PW-9M	PW-9P	3/4	56	3500	502	483	451	420	390	361	327	289	244	87	--	--	--	--	--	77
PW-11S	PW-11M	PW-11P	1 1/2	56	3500	737	718	685	655	625	594	563	532	499	426	333	207	--	--	--	84
PW-12S	PW-12M	PW-12P	3	182T	3500	1265	1249	1224	1192	1162	1135	1108	1071	1038	955	870	763	629	--	--	90
PW-14S	PW-14M	PW-14P	5	182T	3500	--	--	--	--	--	--	--	--	--	1685	1587	1482	1367	1236	1081	874
PW-14S-7.5**	PW-14M-7.5**	PW-14P-7.5**	7 1/2	213	3500	2181	2153	2103	2055	2020	1961	1905	1864	1818	1722	1614	1494	1340	1172	968	685
EXPLOSION PROOF DIRECT DRIVE PRESSURE BLOWERS																					
PW-8SX	PW-8MX	--	1/3	56	3500	281	263	236	210	182	153	119	79	--	--	--	--	--	--	74	
PW-9SX	PW-9MX	--	3/4	56	3500	502	483	451	420	390	361	327	289	244	87	--	--	--	--	77	
PW-11SX	--	--	1 1/2	56	3500	737	718	685	655	625	594	563	532	499	426	333	207	--	--	84	
--	PW-11MX**	PW-11PX**	1 1/2	143T	3500	737	718	685	655	625	594	563	532	499	426	333	207	--	--	84	
PW-12SX	PW-12MX	PW-12PX	3	182T	3500	1265	1249	1224	1192	1162	1135	1108	1071	1038	955	870	763	629	--	--	90
PW-14SX	PW-14MX	PW-14PX	5	182T	3500	--	--	--	--	--	--	--	--	--	1685	1587	1482	1367	1236	1081	874
PW-14SX-7.5**	PW-14MX-7.5**	PW-14PX-7.5**	7 1/2	213	3500	2181	2153	2103	2055	2020	1961	1905	1864	1818	1722	1614	1494	1340	1172	968	685

* Fan should not be run at static pressure less than shown in above table, motor overload will result. dBA ratings shown are measured at 0" static pressure, and should be used as a guideline only.

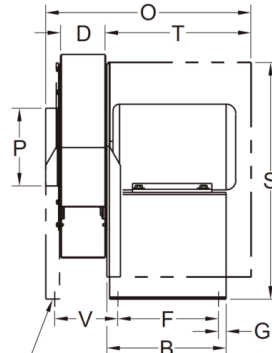
** Special order models.

DIMENSIONS

MODEL	WHEEL	A	B	C	D	E	F	G	H	J	K	L	O	P	R	X	S	T	V
PW-8	7 3/4" x 2 1/4"	11"	8"	3"	3"	5"	7"	1/2"	5 3/8"	4 7/8"	5 7/8"	5 7/8"	16"	4"	6 5/8"	8 1/2"	13 1/8"	21"	--
PW-9	9" x 2 3/4"	12 1/8"	8"	3 1/2"	3 1/2"	5 5/8"	7"	1/2"	6 3/8"	5 3/4"	6 7/8"	6 3/4"	20 3/4"	5"	7 1/2"	9 3/8"	14 5/8"	16"	--
PW-11	10 5/8" x 3"	14 3/4"	9"	4"	3 1/2"	6 7/8"	7 1/2"	3/4"	7 1/4"	6 1/2"	8"	7 5/8"	20 3/4"	6"	8 5/8"	11 3/4"	18 1/4"	16"	--
PW-12	12 1/2" x 3"	17"	8"	5"	4"	8"	6 1/2"	3/4"	8 1/4"	7 1/2"	9"	9 5/8"	20 1/8"	7"	10"	10 5/8"	18 3/8"	15"	--
PW-14	13 1/2" x 4 3/8"	17 5/8"	11 1/4"	7 1/8"	5 3/4"	8"	9 9/16"	1"	10 1/2"	9 5/8"	11 3/8"	11"	22"	8"	11 1/2"	12 5/8"	21 1/2"	15"	7 1/4"



3/8 DIA. 4 HOLES



3/8 DIA. 2 HOLES

[Only on Model PW-14]

RELATED PRODUCTS

KE SERIES
Direct Drive Radial
Blade Blowers

