

# KE SERIES

Direct Drive Radial Blade Blower for high static applications, greenhouse inflation or exhaust.

Ideal for environments where air is laden with dust, grit or any other lightweight foreign material.



## FEATURES

- Wheels are constructed of heavy cast aluminum with straight radial blades.
- Wheels are self cleaning, dynamically balanced and designed for efficient operations.
- Welded 16 gauge steel housings and motor bases.
- TEFC motors are standard.
- Comes as clockwise rotation, bottom horizontal discharge (can be rotated at 45° increments).

## PERFORMANCE SPECIFICATIONS

MODEL						CFM @ STATIC PRESSURE														dBA @ 5 FT
SINGLE PHASE	THREE PHASE 230/460	THREE PHASE 575	HP	MOTOR FRAME	RPM	0"	1/8"	1/4"	3/8"	1/2"	5/8"	3/4"	1"	1 1/4"	1 1/2"	1 3/4"	2"	2 1/4"		
KE-08S	KE-08M	KE-08P	1/6	56	1725	533	493	448	396	334	250	93	--	--	--	--	--	--	64	
KE-09S	KE-09M	KE-09P	1/4	56	1725	909	848	788	724	655	572	462	--	--	--	--	--	--	69	
KE-11S	KE-11M	KE-11P	3/4	56	1725	1593	1524	1457	1386	1309	1225	1134	916	617	97	--	--	--	75	
KE-12S	KE-12M	KE-12P	1 1/2	56	1725	2461	2400	2330	2257	2179	2096	2007	1807	1564	1252	812	166	--	79	
KE-14S	KE-14M	KE-14P	2	145T	1725	3393	3307	3221	3134	3046	2956	2863	2664	2438	2164	1786	1181	666	81	
<b>EXPLOSION PROOF DIRECT DRIVE RADIAL BLADE BLOWERS</b>																				
KE-08SX	KE-08MX	KE-08PX	1/6	56	1725	533	493	448	396	334	250	93	--	--	--	--	--	--	64	
KE-09SX	KE-09MX	KE-09PX	1/4	56	1725	909	848	788	724	655	572	462	--	--	--	--	--	--	69	
KE-11SX	KE-11MX	KE-11PX	3/4	56	1725	1593	1524	1457	1386	1309	1225	1134	916	617	97	--	--	--	75	
KE-12SX	KE-12MX	KE-12PX	1 1/2	56	1725	2461	2400	2330	2257	2179	2096	2007	1807	1564	1252	812	166	--	79	
--	KE-14MX	KE-14PX	2	145T	1725	3393	3307	3221	3134	3046	2956	2863	2664	2438	2164	1786	1181	666	81	

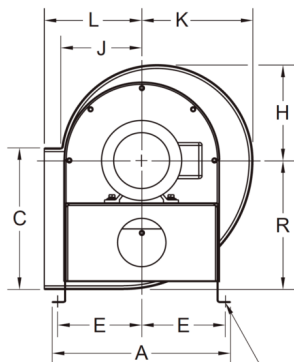
dBA ratings shown are measured at 0" static pressure, and should be used as a guideline only. Performance certified is for installation type B- free inlet, ducted outlet.

Power Rating (BHP) does not include transmission losses. Performance ratings do not include the effects of appurtenances (accessories).

## DIMENSIONS

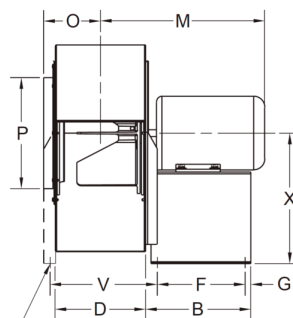
MODEL	WHEEL	A	B	C	D	E	F	G	H	J	K	L	M*	O	P	R	V	X
KE-08	7 3/4" x 4"	11"	8"	8 1/4"	5 3/8"	5"	7"	1/2"	6"	4 5/8"	6 3/4"	6 7/8"	10 3/4"	3 3/4"	8"	8"	-	8 1/2"
KE-09	9" x 5"	12 1/8"	8"	10 3/4"	6 1/2"	5 5/8"	7"	1/2"	6 3/4"	5 5/8"	7 3/4"	7 1/8"	11 3/4"	4 5/16"	9"	9 1/4"	-	9 3/8"
KE-11	10 7/8" x 5 5/8"	14 3/4"	9"	11 3/4"	8"	6 7/8"	7 1/2"	3/4"	8"	6 3/4"	9 1/8"	8 1/8"	13 1/4"	5 1/16"	10"	10 3/4"	-	11 3/4"
KE-12	12 1/2" x 7 1/2"	16 3/8"	10 1/2"	13 1/4"	9 5/8"	7 3/8"	8 3/4"	7/8"	10 1/8"	8 1/2"	11 1/2"	10 1/2"	15 3/16"	6 3/8"	13 1/4"	13 1/4"	11 1/8"	17"
KE-14	13 1/2" x 8 1/8"	17 5/8"	10 1/2"	14 5/8"	10 3/4"	8"	8 3/4"	7/8"	11 1/8"	9 3/8"	12 5/8"	11 3/8"	16 3/4"	7"	14 1/2"	14 5/8"	12 1/4"	17"

\* Dimensions may vary depending on type of motor used.



N DIA. 4 HOLES

Clockwise rotation, bottom horizontal discharge shown.



N DIA. 2 HOLES

[Only on Models KE-12 and KE-14]

Mounting holes are 3/8" diameter on all models up to KE-11 and 9/16" on the KE-12 and KE-14.

## RELATED PRODUCTS

**PW SERIES**  
Direct Drive Pressure Blowers

