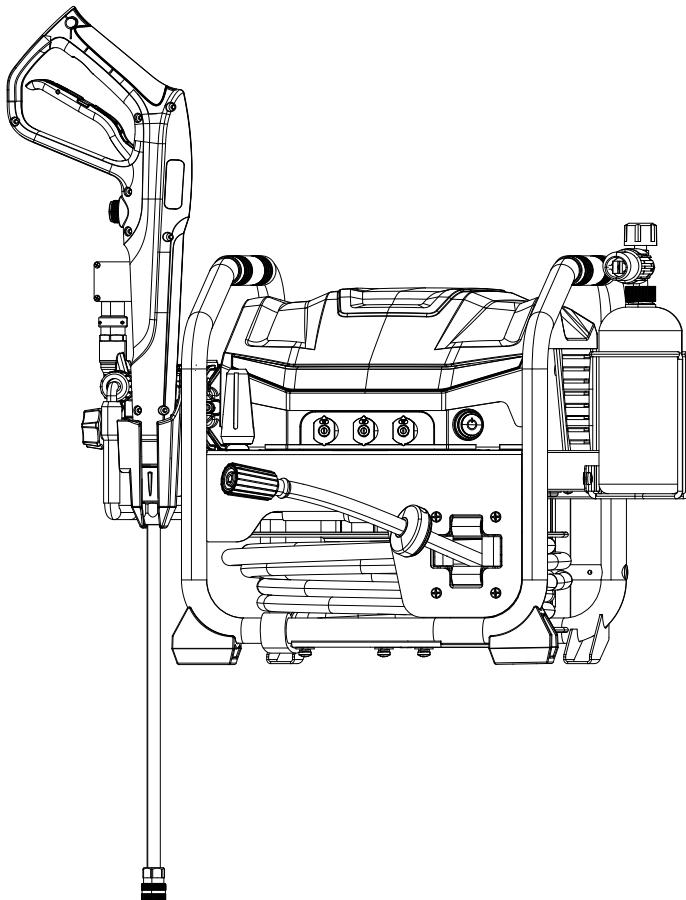


GRANDFALLS PRESSURE WASHER



HBA5010US

USER MANUAL

🌐 giraffetools.com

✉ service@giraffetools.com

☎ +1(833)583-0881 (9am-5pm EST)

WE WILL DO THE HEAVY LIFTING

To purchase Giraffe Tools products and more, visit giraffetools.com or search for Giraffe Tools on Amazon.com.





TABLE OF CONTENTS



GIRAFFE TOOLS

Warning Symbols	01
Safety	02
Product Description	06
Product Overview	07
Assembly	08
Specifications	14
Maintenance	15
Storage	20
Problem Solution	22
Warranty	25
Recommended Products	26

WARNING SYMBOLS

Symbol	Explanation
	Carefully read and understand instructions before operating the product and follow all warnings and safety instructions.
	Do not expose the product to rain or moist conditions.
	Always wear safety goggles or safety glasses with side shields and, as necessary, a full-face shield when operating this product.
	To reduce the risk of high-pressure injection or injury, never direct a water stream towards people or pets or place any body part in the stream. Leaking hoses and fittings can also cause injury. Do not place hands near high-pressure stream.
	To reduce the risk of injury from kickback, hold the spray gun securely with both hands when the product is on.
	Failure to operate in dry conditions and neglecting safe practices can increase risk of electric shock.
	Burst hazard.
	Warning! Never aim the spray gun at humans, animals, the product, power supply, or any electrical appliances.
	The product is not suitable for connection to the drinking water mains without backflow preventer.
	Only set product on flat, horizontal surfaces. Never lift product during operation.
	Keep hands and feet away from the cleaning area while the product is running.
	Do not touch the pump head crankcase while the machine is running to avoid burns.

SAFETY

SAFETY DEFINITIONS

Warning, cautions, and notes are used to point out especially important parts of the manual.

WARNING

THERE IS A RISK OF INJURY OR DEATH FOR THE OPERATOR OR BYSTANDERS, IF THE INSTRUCTIONS IN THE MANUAL ARE NOT OBEYED.

CAUTION

THERE IS A RISK OF DAMAGE TO THE PRODUCT, OTHER MATERIALS, OR THE ADJACENT AREA, IF THE INSTRUCTIONS IN THE MANUAL ARE NOT OBEYED.

IMPORTANT SAFETY INSTRUCTIONS

WARNING

WHEN USING THIS PRODUCT BASIC PRECAUTIONS SHOULD ALWAYS BE FOLLOWED, INCLUDING THE FOLLOWING:

1. Read all the instructions before using the product.
2. To reduce the risk of injury, close supervision is necessary when a product is used near children.
3. Know how to stop the product and bleed pressures quickly. Be thoroughly familiar with the controls.

SAFETY

4. Stay alert – watch what you are doing.
5. Do not operate the product when fatigued or under the influence of alcohol or drugs.
6. Keep the operating area clear of all persons.
7. Do not overreach or stand on unstable support. Always keep good footing and balance.
8. Follow the maintenance instructions specified in the manual.
9. WARNING – Risk of Injection or Injury – Do Not Direct Discharge Stream at Persons.

GROUNDING INSTRUCTIONS

- This product must be properly grounded.
- In the event of a malfunction or breakdown, grounding provides a path of least resistance for electric current to reduce the risk of electric shock.
- This product has an equipment grounding conductor and a grounding plug.
- The plug must be plugged into an appropriate outlet that is properly installed and grounded by all local codes and ordinances.
- Improper connection of the equipment-grounding conductor can increase a risk of the electrocution.
- Consult a qualified electrician or service personnel if you are in doubt as to whether the outlet is properly grounded.
- Do not modify the plug provided with the product – if it does not fit the outlet, have a proper outlet installed by a qualified electrician.
- Do not use any adapter with this product that is not approved by the manufacturer.

SAFETY

GROUNDING FAULT CIRCUIT INTERRUPTER PROTECTION

- This product is equipped with a ground-fault circuit interrupter (GFCI) built into the plug of the power supply cord.
- The GFCI provides additional protection from the risk of electric shock.
- Should replacement of the plug or cord become necessary, use only identical replacement parts with GFCI protection.

EXTENSION CORD(S)

- Use only 3-wire extension cords that have 3-prong grounding-type plugs and 3-pole cord connectors that are compatible with the plug from the product.
- Use only extension cords that are intended for outdoor use and are identified by a marking: "Acceptable for use with outdoor appliances; store indoors while not in use".
- Use only extension cords with an electrical rating not less than the rating of the product.
- Do not use damaged extension cords.
- Examine the extension cord before using it and replace it if damaged.
- Do not abuse extension cord(s) and do not yank on any cord(s) to disconnect.
- Keep cord(s) away from heat and sharp edges.
- Always disconnect the extension cord(s) from the power strip before disconnecting the product from the extension cord(s).
- **WARNING** – To reduce the risk of electrocution, keep all connections dry and raised above the ground.
- Do not touch the electric plug with wet hands.

SAFETY

INSPECT SAFETY FEATURES

CHECK THE SPRAY GUN

- If the spray gun trigger depresses without pressing the safety lock or if the spray gun remains depressed when released, replace the spray gun immediately.

CHECK THE HIGH-PRESSURE HOSE

- If the high-pressure hose is damaged, replace it immediately.

CHECK THE WATER INLET SCREEN

- Inspect the inlet screen. Remove debris or replace if damaged.

PRODUCT DESCRIPTION

DEFINITION

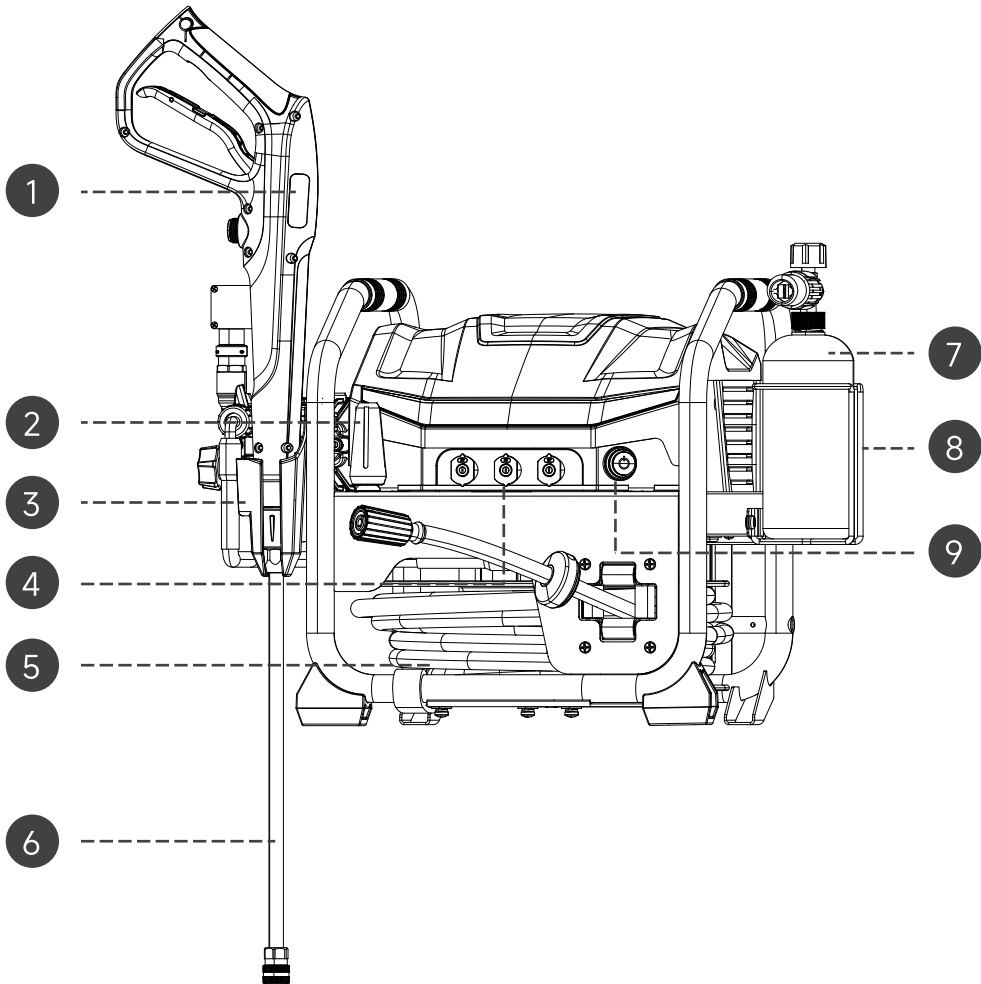
This product is a corded pressure washer with an electric motor.

We are committed to continuously improving our products and reserve the right to modify the design and appearance without prior notice.

INTENDED USE

This product is for outdoor use only. It includes a variety of spray and turbine nozzles for different purposes. The product is used for cleaning machines, vehicles, buildings, floors, tools, facades, balconies, floors, and concrete pavements.

PRODUCT OVERVIEW



1. Spray Gun

2. Turbo Nozzle

3. Spray Gun Holder

4. Spray Tips (15°, 25°, 40°)

5. High-Pressure Hose

6. Spray Wand

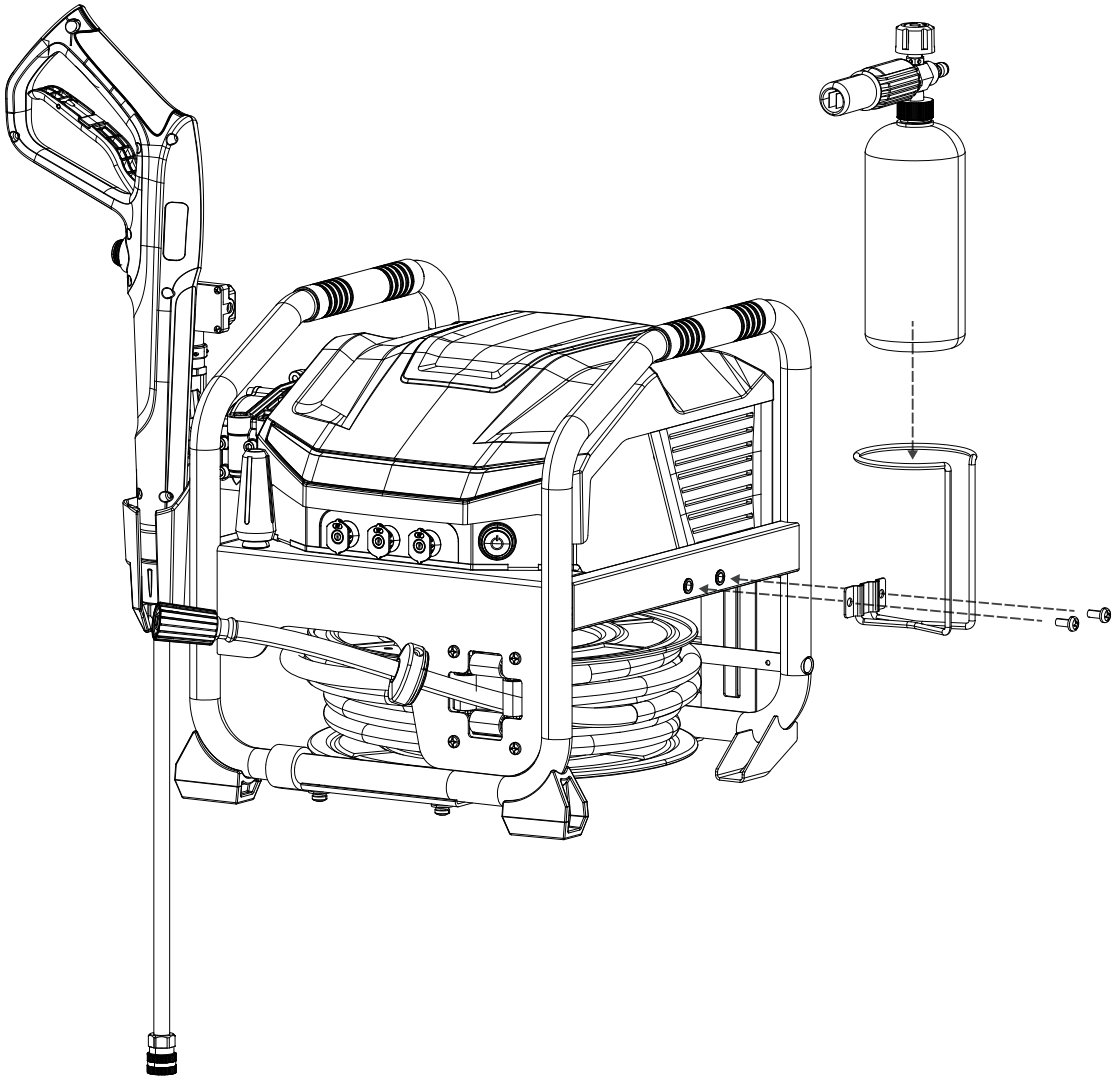
7. Soap Dispenser

8. Soap Dispenser Holder

9. Power Switch

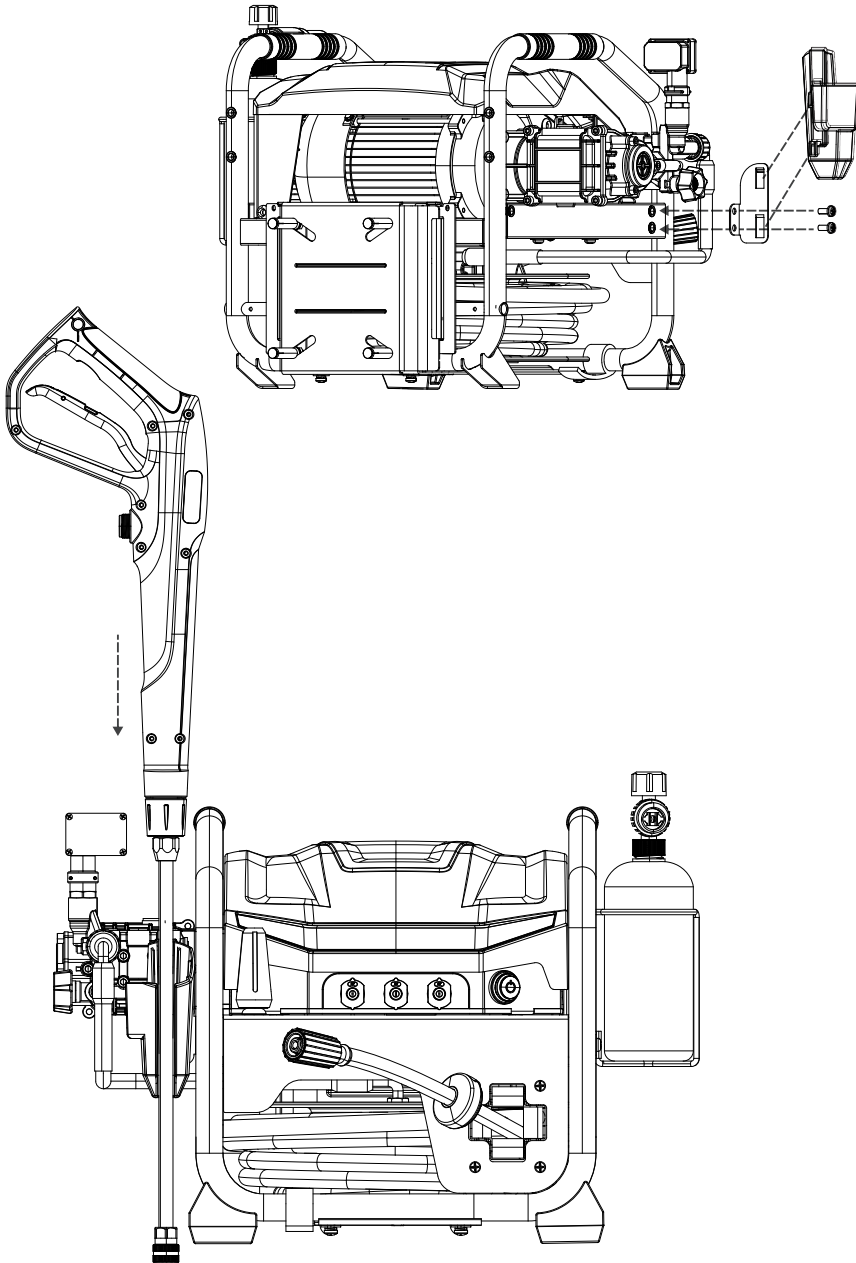
ASSEMBLY

INSTALLATION OF SOAP DISPENSER AND HOLDER



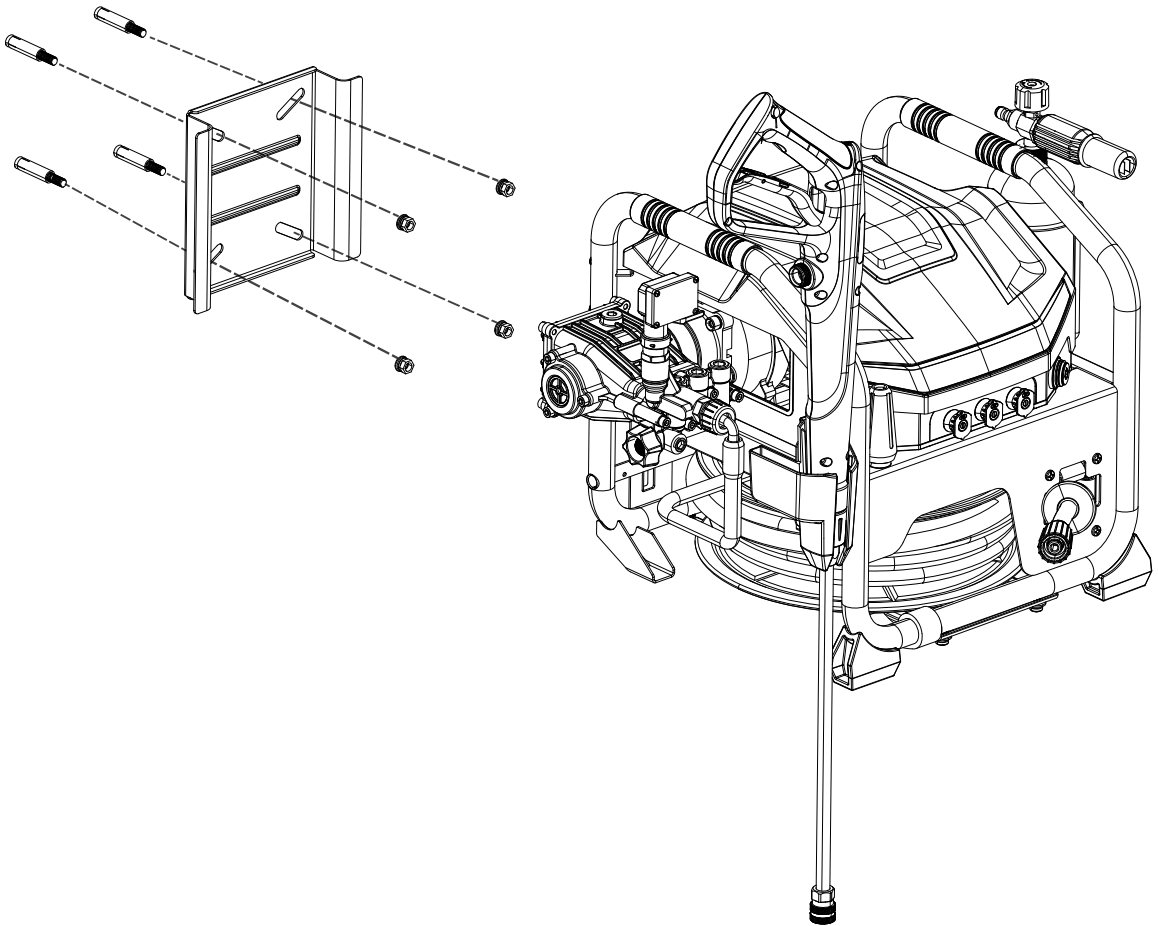
ASSEMBLY

INSTALLATION OF SPRAY GUN AND HOLDER



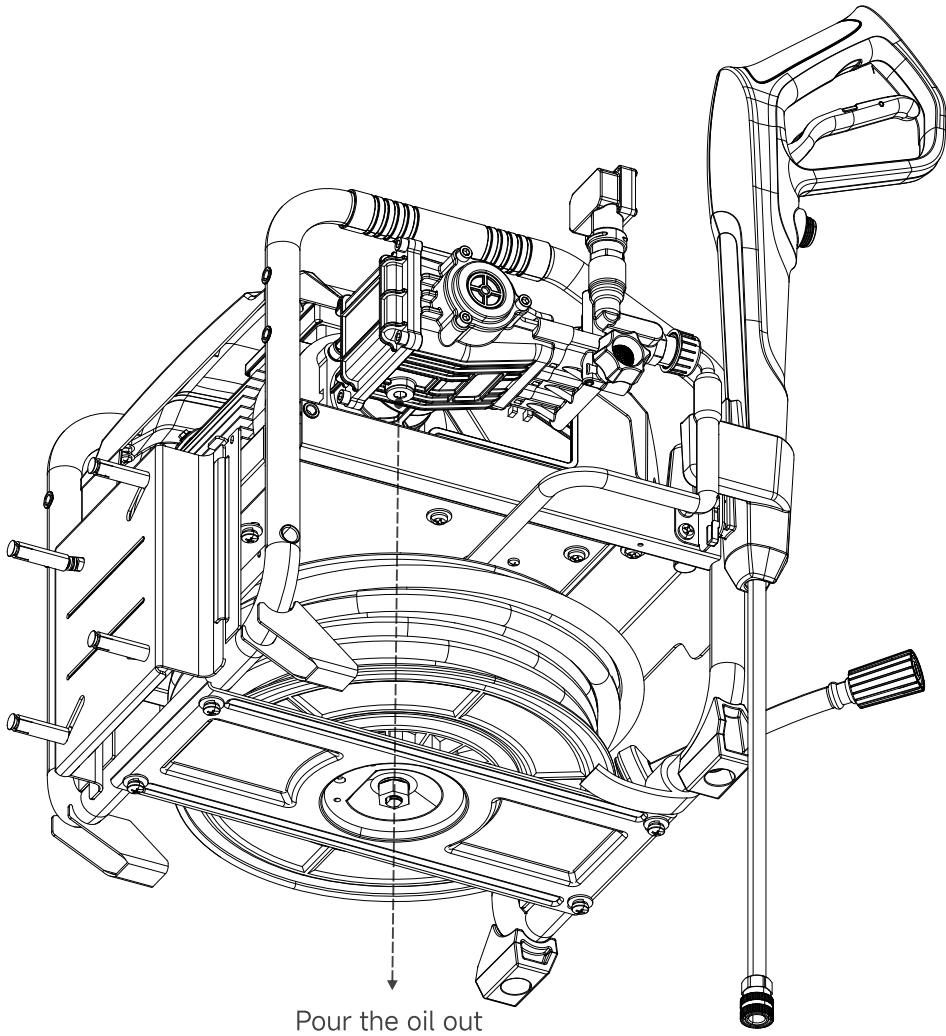
ASSEMBLY

INSTALLATION OF WALL MOUNT BRACKET



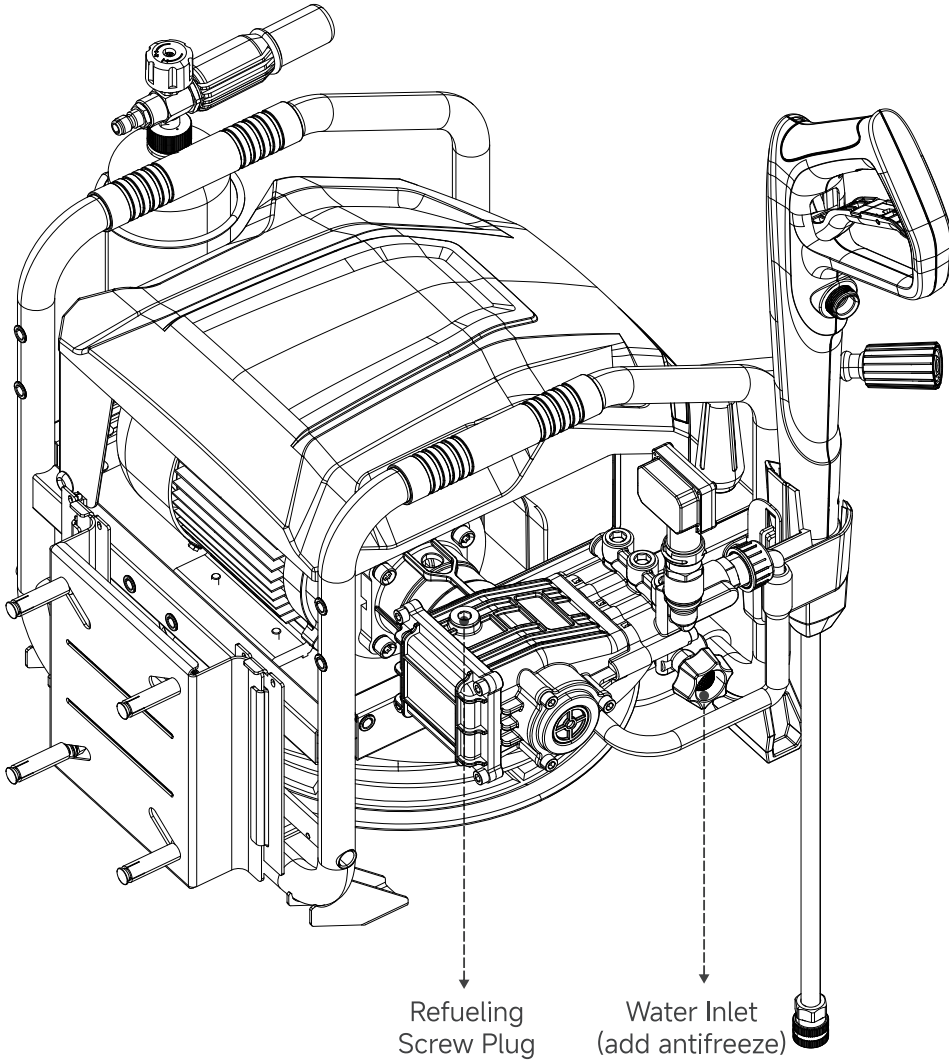
ASSEMBLY

ADDING LUBRICATING OIL



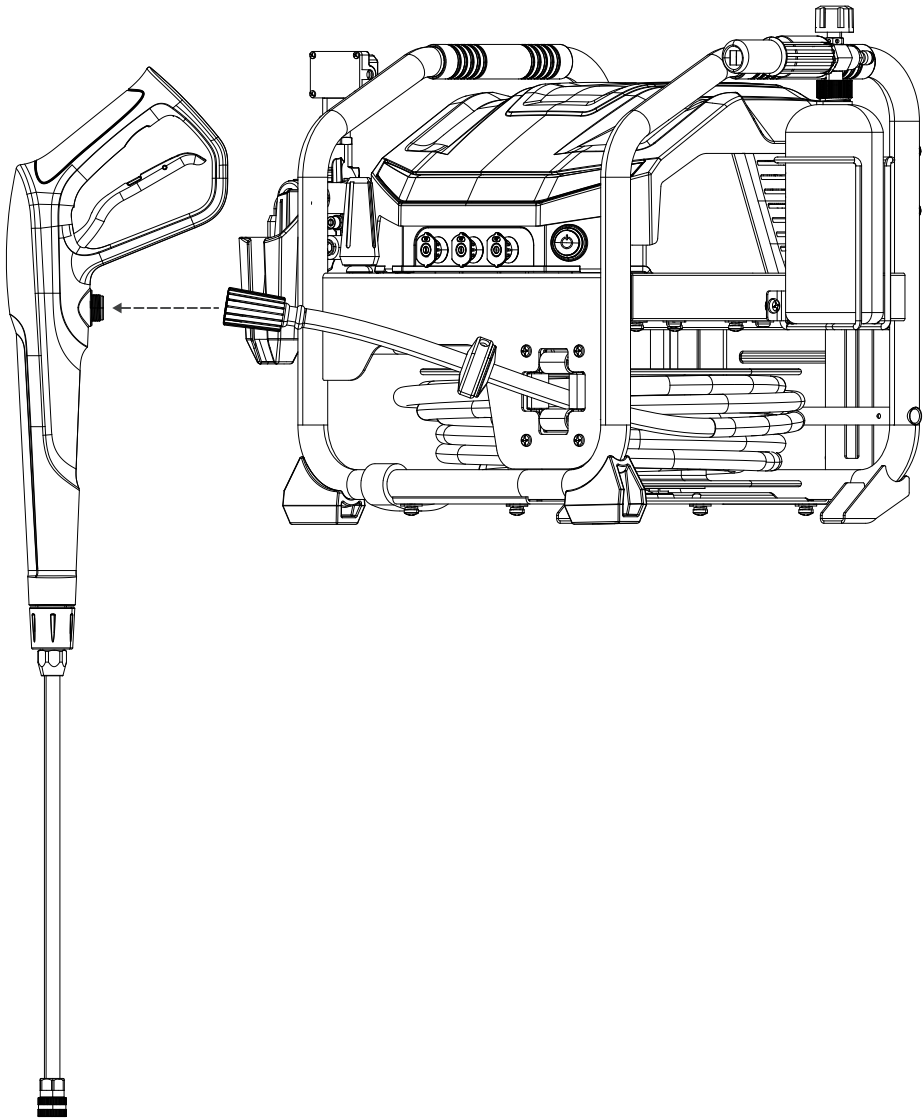
ASSEMBLY

ADDING LUBRICATING OIL



ASSEMBLY

CONNECTION OF SPRAY GUN AND HOSE



SPECIFICATIONS

Drill Size	ø12
Pressure Hose Length	50FT
Rated Voltage/Freq	120V/60Hz
Power	1800W
Electric Current	15A
Max Inlet Water Temperature	140°F/60°C
Power Cord Length	6.56FT
Peak Pressure	1650PSI
Rated Pressure	1350PSI
Max Flow	2.6GPM
Rated Flow	2.2GPM

MAINTENANCE

SAFETY INSTRUCTIONS FOR MAINTENANCE

WARNING

READ THE WARNING INSTRUCTIONS THAT FOLLOW BEFORE YOU DO MAINTENANCE ON THE PRODUCT.

CAUTION

CAREFULLY READ AND UNDERSTAND THE SAFETY CHAPTER AND THE ASSEMBLY INSTRUCTIONS BEFORE YOU ASSEMBLE THE PRODUCT.

- Before inspecting, cleaning, or servicing the product, shut off the product, wait for all moving parts to stop, disconnect the product from the power supply, and squeeze the spray gun trigger to release water pressure. Failure to follow these instructions can result in serious personal injury or property damage.
- When servicing, use only identical replacement parts. The use of any other parts could create a hazard or cause product damage.
- Periodically inspect the entire product for damaged, missing, or loose parts such as screws, nuts, bolts, caps, etc. Securely tighten all fasteners and caps and do not operate this product until all missing or damaged parts are replaced. Please call customer service or contact an authorized service center for assistance.
- Avoid using solvents when cleaning plastic parts. Most plastics are susceptible to damage from various types of commercial solvents and may be damaged by their use. Use clean clothes to remove dirt, dust, oil, grease, etc.
- Do not at any time let brake fluids, gasoline, petroleum-based products, penetrating oils, etc., encounter plastic parts. Chemicals can damage, weaken, or destroy plastic which could result in serious personal injury.
- Neglecting regular maintenance decreases the life cycle of the product and increases the risk of accidents.

MAINTENANCE

- Special training is necessary for all servicing and repair work, especially for the safety features of the product. If not all checks in this operator's manual are approved after maintenance, speak to your servicing dealer. We guarantee that there are professional repairs and servicing available for your product.

RECOMMENDED PUMP CARE

- Regularly using pump protector solution (not included) can help extend the lifespan of the product. It aids in the removal of hard water mineral deposits, lubricates pump seals and pistons, and prevents freeze damage.
- To maintain the best performance of the product, a pump protector should be added to the product after every use and before long-term storage.

Note: The following steps are typical for adding a pump protector to the product. Always read the specific instructions provided by the manufacturer of the pump protector used before starting.

1. Turn the water tap off and make sure the product is powered off.
2. Press the spray gun trigger for approximately 1 minute or until no more water discharges from the connected accessory.
3. Disconnect the power cord from the outlet.
4. Disconnect the hose from the water inlet.
5. Remove the cap from the pump protector bottle and insert the pump protector spout into the water inlet.
6. Turn the water inlet sleeve to secure the connection.
7. Squeeze the pump protector bottle to inject protector fluid into the product.
8. The procedure is complete when the protector fluid discharges from the water outlet.

MAINTENANCE

ADDING LUBRICATING OIL

This product is a professional pressure washer. For better and longer use, you should add lubricating oil first after 50 hours' of use. After the first oil addition, you only need to add lubricating oil every 200 hours. It is best to use the recommended oil S15W-40.

1. Clean the grease on the crankcase.
2. Insert a funnel into the lubricating oil port.
3. Add the lubricating oil (240-260ml every time) into the port.

To clean the crankcase grease for the first time, it is recommended to pour diesel oil into the crankcase, shake the whole machine slightly, and then pour out the diesel oil and then add lubricating oil.

CLEAN DEBRIS

Clean accumulated debris from the product daily or before each use. Regularly inspect the openings on the front, rear, and bottom of the product, ensuring they remain clean and unobstructed. Clean the product exterior with a damp cloth. Keeping the product clean is crucial to minimize the risk of overheating and ignition caused by accumulated debris.

Note: Improper handling or treatment of the product can result in damage or reduced lifespan.

MAINTENANCE

CHECK AND CLEAN THE WATER INLET SCREEN

Examine the screen on the product's water inlet. Clean it if the screen is clogged or replace it if damaged.

CHECK THE HIGH-PRESSURE HOSE

The high-pressure hose may develop leaks due to wear, kinking, or misuse. Before each use, thoroughly inspect the hose for cuts, leaks, abrasions, bulging of the cover, or damage to the couplings. If any of these conditions are present, replace the hose immediately.

WARNING

- NEVER ATTEMPT TO REPAIR A HIGH-PRESSURE HOSE. ALWAYS REPLACE IT.
- THE REPLACEMENT HOSE MUST HAVE A RATING THAT IS EQUAL TO OR EXCEEDS THE MAXIMUM PRESSURE RATING OF THE PRODUCT.

CHECK THE SPRAY GUN

1. Examine the hose connection to the spray gun and make sure it is secure.
2. Test the trigger by squeezing it and making sure it springs back into place when you release it.
3. Engage the safety lock and test the trigger. You should not be able to squeeze the trigger.
4. Replace the spray gun immediately if it fails any of these tests.

MAINTENANCE

SPRAY TIP MAINTENANCE

If you experience a pulsing sensation while squeezing the spray gun trigger, it may be due to excessive pump pressure. The main cause of excessive pump pressure is often a clogged spray tip or a restriction caused by foreign materials, such as dirt.

STORAGE

WARNING

DISCONNECT THE POWER CORD AND WATER SUPPLY HOSE BEFORE TRANSPORTATION AND STORAGE.

TRANSPORTATION

1. Drain all the water from the product, high-pressure hose, spray wand, spray gun, and soap dispenser.
2. Ensure that the plug adapter is stowed inside the plug adapter compartment.
3. Neatly wind the power cord onto the power cord hook.
4. Place the spray gun into the spray gun holder.
5. Cover the water inlet with the cover cap.
6. Dry the nozzle or spray tips and insert them into the storage area.
7. Always use the upper handle to move the product.
8. When transporting the product in a vehicle, securely fasten it using suitable bungee cords or similar restraints to prevent damage.

WINTER STORAGE

Note: Proper preparation for winter storage can prolong the lifespan of the product.

1. Ensure the spray gun, high-pressure hose, water inlet, and water outlet are dry. Wipe the product dry.
2. Neatly wind the power cord onto the power cord hook.
3. Use a pump protector solution to safeguard against cold weather damage during winter storage. Refer to the **Pump Maintenance** chapter for further details.
4. Disconnect the garden hose from the water inlet.

STORAGE

5. Wind the high-pressure hose and hang it on the hose hook.
6. Clean the product housing and the accessories with a soft, damp cloth.
7. Store the product in a dry, isolated room temperature and frost-free area.

LONG TERM STORAGE

Note: Do not store the product in an area with ambient temperature below 32°F (0°C). Water should not remain in the product for long periods. Sediment or minerals can deposit on pump parts and freeze the pump. Follow these procedures after every use:

1. Refer to steps 1-5 in the previous **TRANSPORT** section.
2. Store the product and its accessories in a frost-free room. Keep them in a dry area away from children and pets.

PROBLEM SOLUTION

PROBLEM	POSSIBLE CAUSE	POSSIBLE SOLUTION
The motor does not start.	The power switch is off.	Press the power switch to turn on the product.
	The power cord is not plugged in.	Connect the power cord to the power supply.
	Electrical outlet does not supply sufficient power.	Try another electrical outlet.
	The circuit breaker is tripped.	Let it cool, and start the product again.
	The power switch is on, but you did not squeeze the spray gun trigger.	Squeeze the spray gun trigger.
The product does not reach high pressure.	The diameter of pressure hose is too small.	Replace with a 1" (25 mm) or 5/8" (16 mm) pressure hose.
	Water supply is restricted.	Check pressure hose for kinks, leaks, and blockages.
	Water supply is not sufficient.	Increase the water supply.
	Spray tip is not properly installed onto the spray wand.	Install desired spray tip to end of wand.
	The water intake filter is clogged.	Remove filter and rinse in warm water.

PROBLEM SOLUTION

PROBLEM	POSSIBLE CAUSE	POSSIBLE SOLUTION
The output pressure varies (high and low).	The water supply is not sufficient.	Increase water supply. Check garden hose for kinks, leaks, or blockages.
	The pump is drawing in air.	<ol style="list-style-type: none"> 1. Make sure that the hoses and fittings are airtight. 2. Turn off the product. 3. Purge pump by squeezing spray gun trigger until a steady flow of water comes out from the spray tip.
	The water intake filter is clogged.	Remove the filter and rinse in warm water.
	The supply voltage is low.	Make sure that only the product is running on the circuit.
	The gun, hose, or nozzle are calcified.	Remove filter and rinse in warm water.
The motor buzzes, but the product does not start.	The supply voltage is low.	Make sure that only the product is running on the circuit.
	The pump system has residual pressure.	<ol style="list-style-type: none"> 1. Turn off the product. 2. Squeeze the spray gun trigger on spray wand to release pressure. 3. Turn on the product
	Voltage loss due to use of an improper extension cord.	Disconnect the extension cord, and connect the product directly into the outlet.

PROBLEM SOLUTION

PROBLEM	POSSIBLE CAUSE	POSSIBLE SOLUTION
The motor buzzes, but the product does not start.	The product can't be used for long periods.	Call customer service at +1(833)583-0881
	Residual friction of components may produce a humming noise.	<ol style="list-style-type: none">1. Disconnect the water supply.2. Power on the product for 2 to 3 seconds.3. Repeat the above step a couple of times until the motor starts.
There is no water.	The water supply is off.	Turn the water supply on.
	The pressure hose is kinked.	Remove kink(s) in pressure hose.

WARRANTY

GIRAFFE TOOLS warrants this product, to the original purchaser with proof of purchase, 1 year commercial power train warranty, 3 years consumer warranty (against defects in materials, parts or workmanship) GIRAFFE TOOLS, at its own discretion will repair or replace any and all parts found to be defective, through normal use, free of charge to the customer. This warranty is valid only for units which have been used for personal or commercial use and that have been maintained in accordance with the instructions in the owner's manual supplied with the product from new.

ITEMS NOT COVERED BY WARRANTY

1. Any part that has become inoperative due to misuse, abuse, neglect, accident, improper maintenance, or alteration.
2. The unit, if it has not been operated or maintained in accordance with the owner's manual.
3. Normal wear.
4. Routine maintenance items such as lubricants, blade sharpening.
5. Normal deterioration of the exterior finish due to use or exposure.

RECOMMENDED PRODUCTS



5/8" Retractable Hose Reel, 60-115ft



1/2" Retractable Hose Reel, 78-155ft



Retractable Air Hose Reel



Grandfalls Pressure Washer



Grandfalls Pressure Washer 65ft



Pressure Hoses 25-100ft



Hose Reel Cart 150-250ft



Hybrid Hose with Swivel Grip 2.5-100ft



Customized Garden Hose 6-100ft

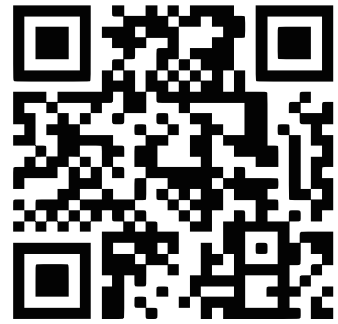
RECOMMENDED PRODUCTS



Scan code to visit Giraffe
Tools store on Amazon.com



Scan code to visit
giraffetools.com



Scan code to join our
facebook group

If you are interested in the above products, you can visit giraffetools.com or search for Giraffe Tools on Amazon.


GiRAFFE TOOLS

WE WILL DO THE HEAVY LIFTING

To purchase Giraffe Tools products and more, visit giraffetools.com or search for Giraffe Tools on Amazon.com.

 giraffetools.com

 service@giraffetools.com

 +1(833)583-0881 (9am-5pm EST)



Complete your registration online for
a 100 DAYS WARRANTY EXTENSION