

Defender® HD 1080p 4 Channel 1TB DVR Security System and 4 Bullet Cameras

PROTECT WHAT YOU VALUE MOST

We set out to create an incredibly easy to use security system that provides striking clarity. The result? Defender HD. 1080p, weather resistant, easy to install yourself and available wherever you are. Keeping watch 24/7. This is what a security system should be.

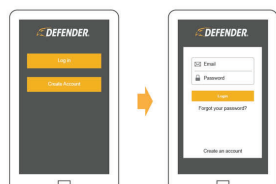
DESIGNED FOR EVERYONE

Experience live or recorded video from your desktop, TV or mobile device, with intuitive icons and straightforward recording options.

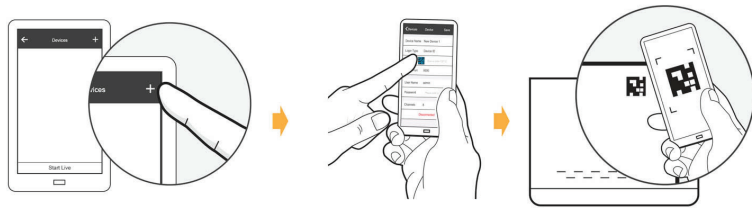
1



2



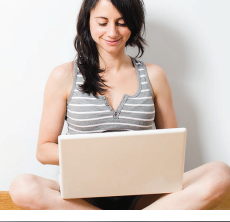
3



Designed for everyone. Set-up is easy and viewing your video clips is even easier. Check in right from your desktop or mobile device. The intuitive app and web login lets you manage your account, set your recording schedule, receive motion alerts and customize everything the way you want it. We have a help menu, but you won't need it.

ON THE GO

Web viewing with 24/7 live streaming, footage playback and account management. Compatible with Internet Explorer, Safari and Firefox.



STOP SQUINTING & GUESSING

Why have a security system if you can't clearly see what you're looking at? Defender's HD 1080p 75° wide angle lens means that you can see license plates, faces and cars in exceptional detail.

EASY AS 1,2,3

Hassle free setup with color-coded wiring, numbered ports and a three-step setup.



YOUR EYES THROUGHOUT THE NIGHT

These cameras let you see up to 130ft in ambient light and 100ft in total darkness.

ENGINEERED TO DELIVER

Four HD 1080p bullet cameras made of ultra-lightweight polycarbonate resin, built to protect against vandals. IP66 rated for dust and heavy rainfall protection.



SPECIFICATIONS

Component/Model # HD1T4	
Model Number	HD1T4
HDD Size	1TB
Number of Channels	4
Video Compression	H.264
Video System	NTSC/PAL
Operation System	Linux (embedded)
Analog Vid-Input /Output	4CH Inputs /VGA and HDMI Output
Audio Input /Output(RCA)	1CH Inputs /1CH (RCA)
Display Resolution Feature	1080P/ 720P/ 960H Single/ Quad/ S.E.Q.
Record Resolution Speed	1080P/720P/960H 1080P:15fps (each ch) 720P:30fps (each ch) 960H:30fps (each ch)
Recording Mode	Continuous/Manual /Motion Detect
Synchronous Playback	4CH
Network Type	Lan, DHCP and DDNS
HDD Interface	1SATA HDD, up to 8TB
Multiplex Operation	Live Display, Record, Playback, Backup and Network
USB	2 x USB (For Mouse and Backup/Upgrade)
Sensor & Alarm I/O	No
PTZ Compatible	Yes (RS485)
Mobile Surveillance	iPhone and Android
VGA/HDMI	1024*768, 1280*1024, 1440*900, 1920*1080,
Power Supply	DC 12V/2A
Working Temperature	-10°C~+55°C
Working Humidity	10%~90%
Dimensions (WxDxH)	9.86in x 8.54in x 1.85in (250.5mm x 217mm x 47mm)

Component/Model # HDCB1	
Model	HDCB1
Image Sensor	2.0 Megapixel, 1/2.7" CMOS
Housing	Polycarbonate Resin
Effective Pixels	1920 (H) x 1080 (V)
Electronic Shutter	1/25 - 1/10,000 Sec
Video Frame Rate	1080P @ 25fps (PAL) 1080P @ 30fps (NTSC)
Lens	3.6mm
Synchronization	Internal
Min. Illumination	0.05 Lux @ (F1.2, AGC ON, 0 Lux with IR)
Video Output	1 Channel BNC
IR Cut Filter	Yes
IR Led Quantity	12
FOV (Field of View)	75° Horizontal Field of View
Night Vision Range	Up to 100ft
Power Supply	DC12V±10%
Power Consumption	Max 4.2W
Working Environment	-10°C~+55°C/ Less Than 95% RH
Ingress Protection	IP66
Max HD Cable Distance	300ft
Dimensions (LxWxH)	6.8in x 2.6in x 2.5in (172.8mm x 66mm x 64mm)

Certifications

• FCC

• CE Certified

• RoHS

• CUL/ UL

DVR



High Definition 1080p Live View & Recording



Fast, Simple Online Setup In Under 5 Minutes



Secure, User Friendly Browser-based Web User Interface



Mobile App Features Include Live View, Playback, Push Notifications & More

CAMERA



High Definition 1080p Resolution



Up to 100ft Night Vision



True Weather Resistance



75° Wide Angle Lens



Vandal Resistant Design