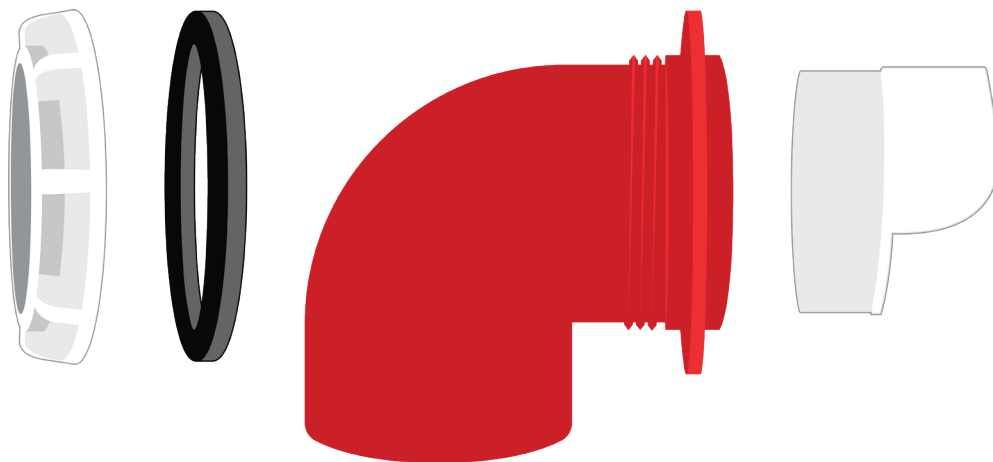


R e n t A C o o p[®]

DIY series

EASY-INSTALL FEED-PORTS

No SCREWS
NEEDED!



SAFETY WARNING: NOT INTENDED FOR CHICKENS UNDER 12 WEEKS OLD OR GROWING BANTAMS, MUST BE FULL-GROWN.

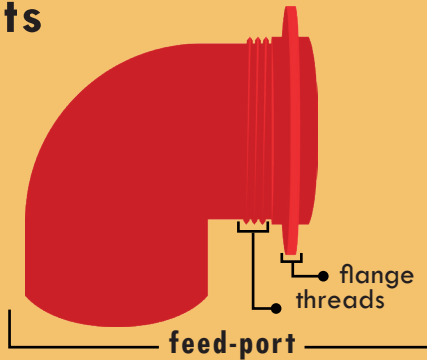
Labeled Diagram of Parts



locknut



gasket



feed-port



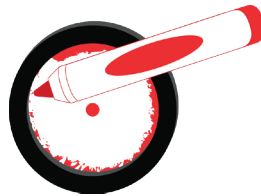
rain hood

Installation Instructions

- 1 Measure and mark 5" from the bottom of the container.



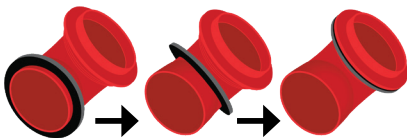
- 2 Skip this step if you have a 3.75" holesaw and continue to Step 3b. Center the gasket around the mark and trace the *inside* of the gasket to create a cutting guide.



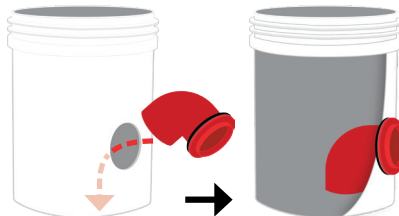
- 3 Cut along the guide using a jigsaw or utility knife to create a hole for the feed-port. BE CAREFUL!



- 6 Slide the gasket onto the bottom of the port and slide it all the way up until it lays flat against the flange.



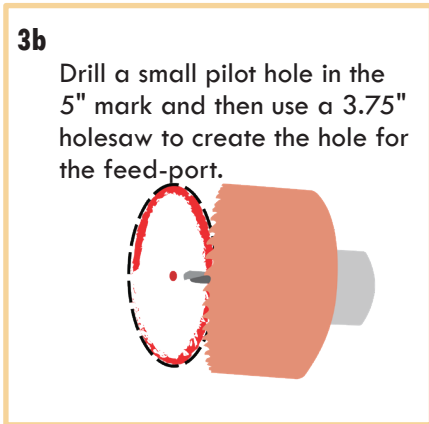
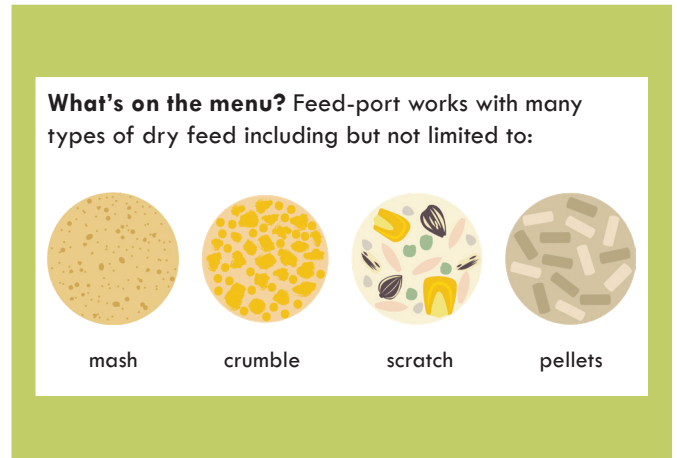
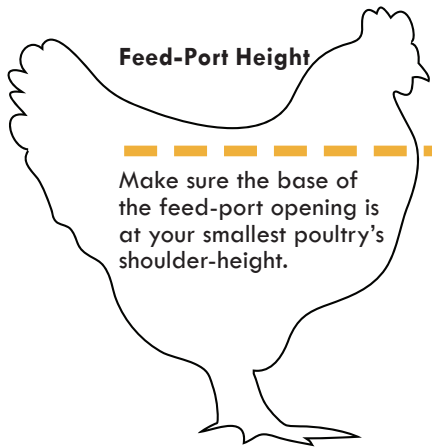
- 7 Insert the bottom end of the port into the cut-out of the container.



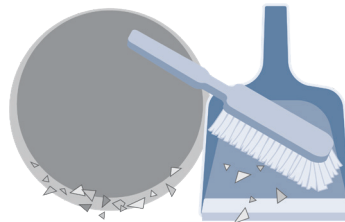
NOTE: The bottom end of the feed-port should be facing the bottom of the container.

- 8 From the inside of the container, slide the locknut onto the port until it reaches the threads at the top near the flange.





4 Clean up all dust and debris around the new opening.



5 Your container is now ready for feed-port installation.



9 Twist the locknut clockwise onto the threads of the port to lock the port in place.



10 Insert rainhood into port.



11 Fill container with feed, cover/close lid (if applicable), place in coops.





RentACoop®

QUESTIONS?

CONTACT OUR
EGG - S P E R T S

info@rentacoop.com

1 800-642-3571

M-F 9-5 EST

For video instructions and other
helpful tips and tricks, visit
www.rentacoop.com/videos



ver. 202203