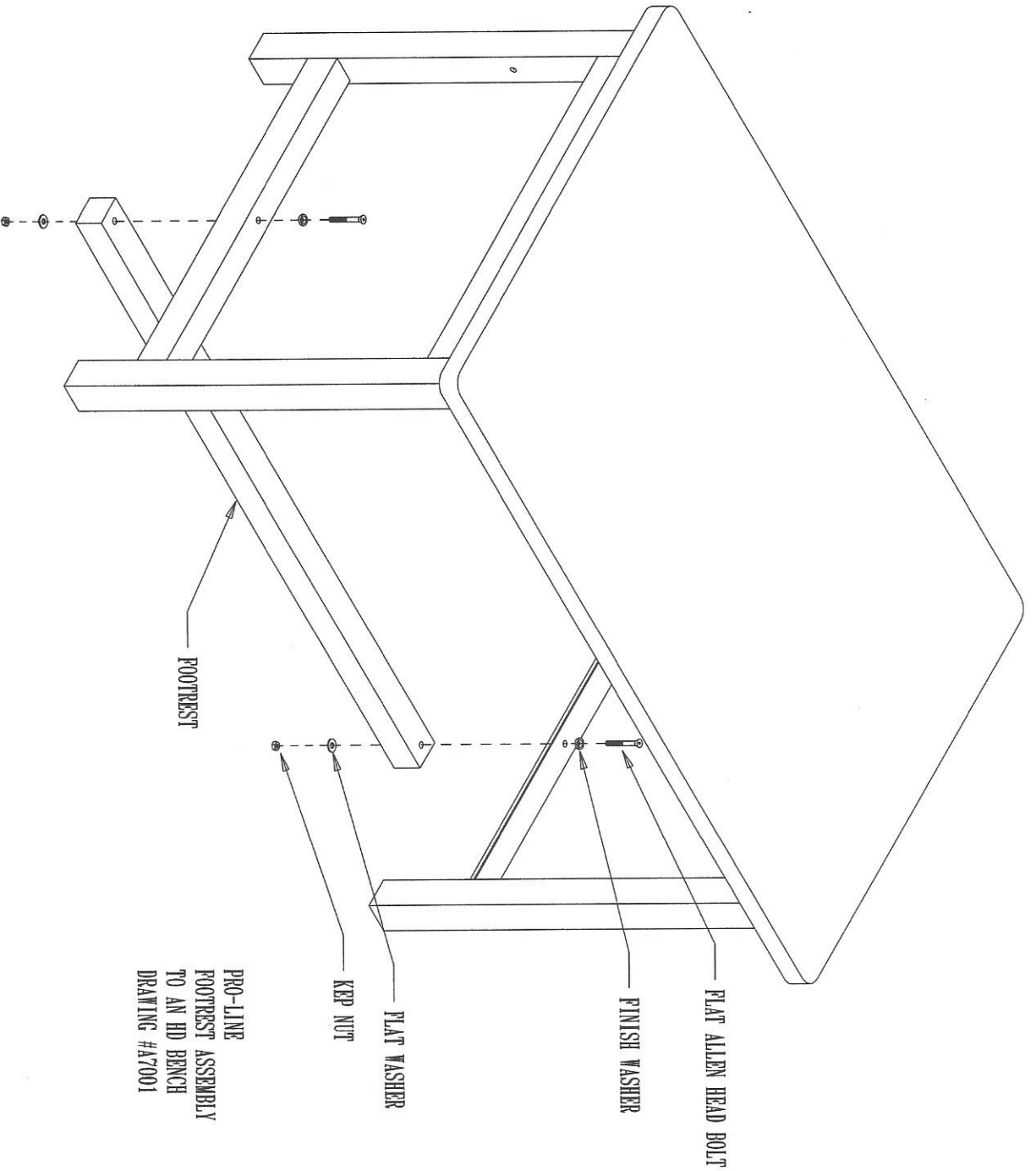


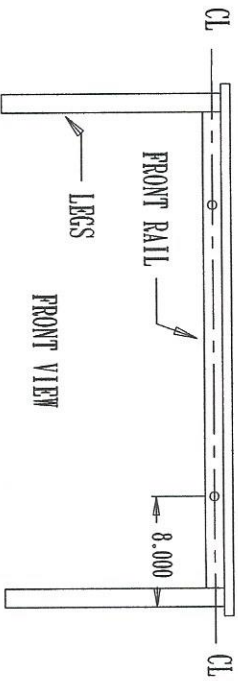
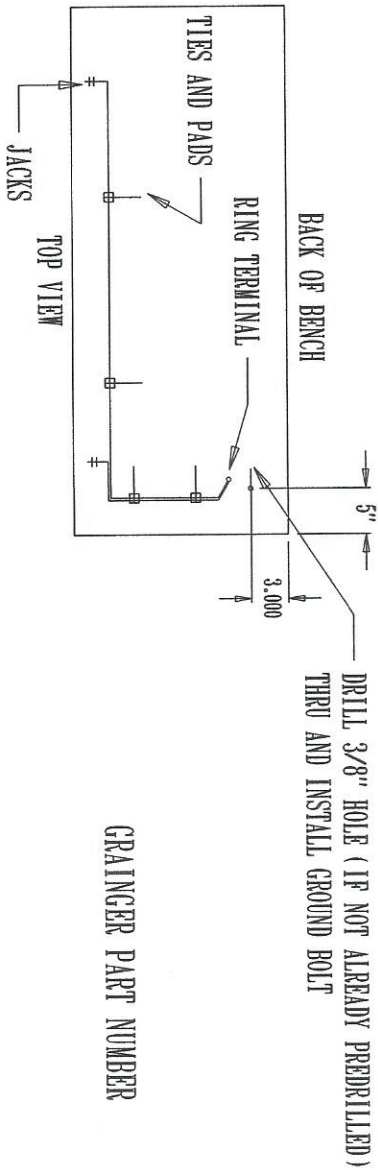
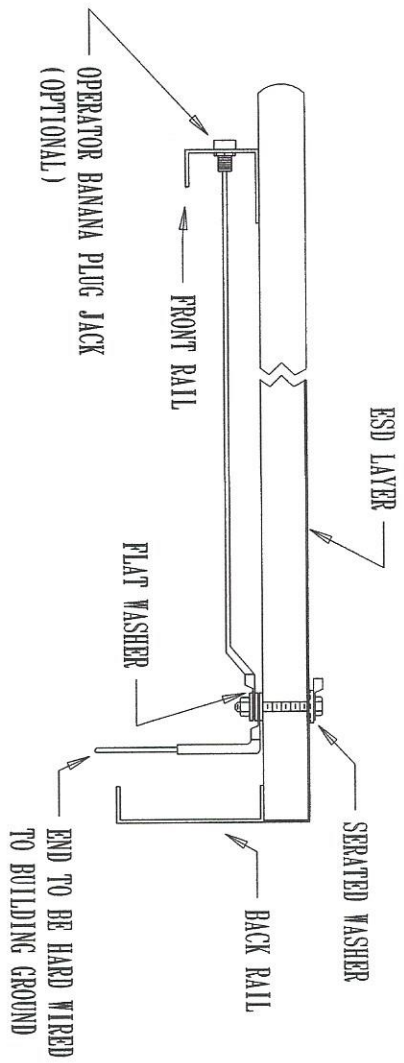
PROLINE
STANDARD TSHD BENCH ASSEMBLY
DRAWING # A7716

- 1) SLEEVE LEG EXTENDER INTO LEG AT DESIRED HEIGHT AND PLACE BOLT ASSEMBLY AS SHOWN AND TIGHTEN.
- 2) SCREW NYLON GLIDES INTO LEG EXTENDERS
- 3) ASSEMBLE FRONT AND BACK RAIL USING STUD PLATES AND LOCK NUTS PROVIDED. THE 2 X 2 X 1 CHANNEL IS FOR THE FRONT OF THE UNIT AND THE 1 X 8 CHANNEL IS FOR THE REAR THEN ATTACH THE 1/4" - 20 X 3/4" HEX HEAD BOLT AND FLAT WASHER TO THE BOTTOM MOST HOLE IN THE BACK RAIL (BEFORE TIGHTENING NUTS MAKE SURE THAT THE FRONT RAIL AND BACK RAIL ARE PUSHED INWARD APPROXIMATELY 1/8" TO ALLOW THE WORKSURFACE TO BE MOUNTED PROPERLY)
NOTE: HOLES IN RAILS SHOULD BE FACING UP
- 4) PLACE WORKSURFACE BOTTOM UP ON A PROTECTED SURFACE (TO PROTECT LAMINATE FROM SCRATCHES) PLACE ASSEMBLED FRAME ON BACKSIDE OF TOP, LOCATE FLUSH WITH BACK EDGE OF LEG. (SEAM OF EDGING TO BACK). USE #28 DRILL BIT AND PRE-DRILL HOLES 1/2" DEEP AND SCREW #12 X 3/4" SCREWS IN TO SECURE FRAME TO TOP.
- 5) SET BENCH UPRIGHT AND ADJUST NYLON GLIDES TO LEVEL



PRO-LINE
FOOTREST ASSEMBLY
TO AN HD BENCH
DRAWING #A7001

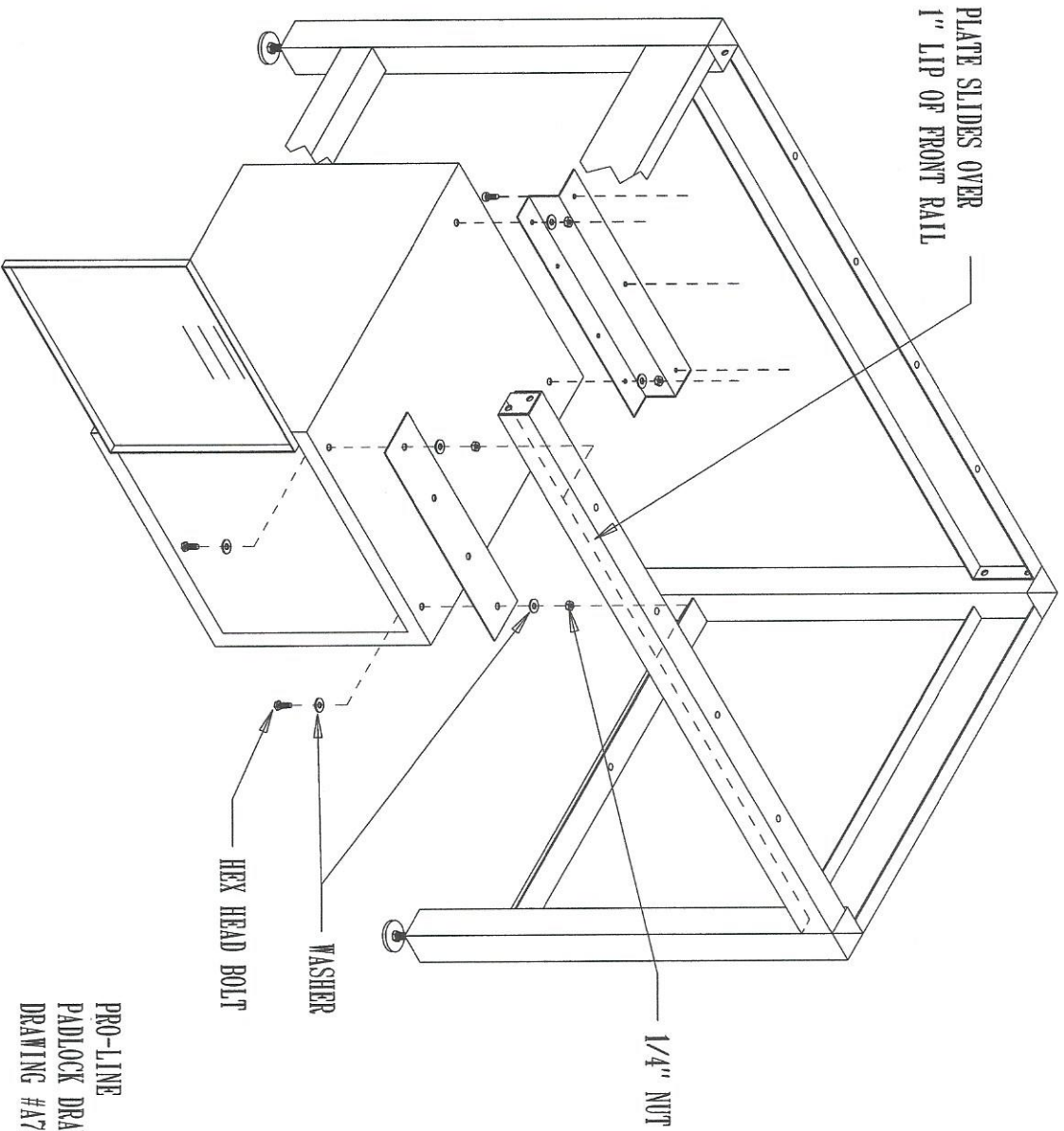
1) ASSEMBLE FOOTREST AS SHOWN USING
1/4" - 20 X 2 1/4" PLAT ALLEN HEAD BOLT,
FINISH WASHER, PLAT WASHER AND KEP
NUTS PROVIDED.



GRAINGER PART NUMBER

PROLINE
 SGK - J2 GROUND JACK (FIELD ASSEMBLY)
 DRAWING # A7217

- 1) DRILL 3/8" HOLE IN WORKSURFACE PER MEASUREMENTS IN THE TOP VIEW (IF NOT ALREADY PREDRILLED)
- 2) INSTALL 5/16" X 2 1/2" HEX HEAD BOLT, RING TERMINAL, AND SEPARATED WASHER THROUGH WORKSURFACE. ON UNDERSIDE OF WORKSURFACE INSTALL WASHER, RING TERMINAL, WASHER, RING TERMINAL, WASHER, AND NUT IN THIS ORDER AND TIGHTEN
- 3) MEASURING APPROX. 8" IN FROM OUTSIDE OF LEG AND 1" DOWN FROM TOP OF WORKSURFACE (SEE FRONT VIEW)
 DRILL FRONT RAIL WITH 5/16" DIA. DRILL BIT
- 4) MOUNT JACKS INTO FRONT RAIL USING NUTS PROVIDED
- 5) RUN WIRES IN MANNER SHOWN IN TOP VIEW USING WIRE TIES AND SELF STICK PADS (4 TO 6 PER BENCH)
 NOTE : PADS STICK BETTER TO METAL SURFACES
- 6) CUT WIRES TO APPROPRIATE LENGTH BY PULLING WIRES (TO REMOVE EXCESS SLACK) TOWARDS THE HOLE IN THE WORKSURFACE AND ADDING 1" TO THAT. STRIP WIRES BACK 1/4" AND INSTALL THE RING TERMINAL BY CRIMPING IT TO BOTH EXPOSED WIRES AT THE SAME TIME



1) MOUNT BRACKETS AS SHOWN TO THE PADLOCK DRAWER USING 1/4" HEX HEAD BOLTS, NUTS AND WASHERS (TIGHTEN BOLTS ON REAR BRACKET BUT LEAVE BOLTS ON FRONT PLATE LOOSE)

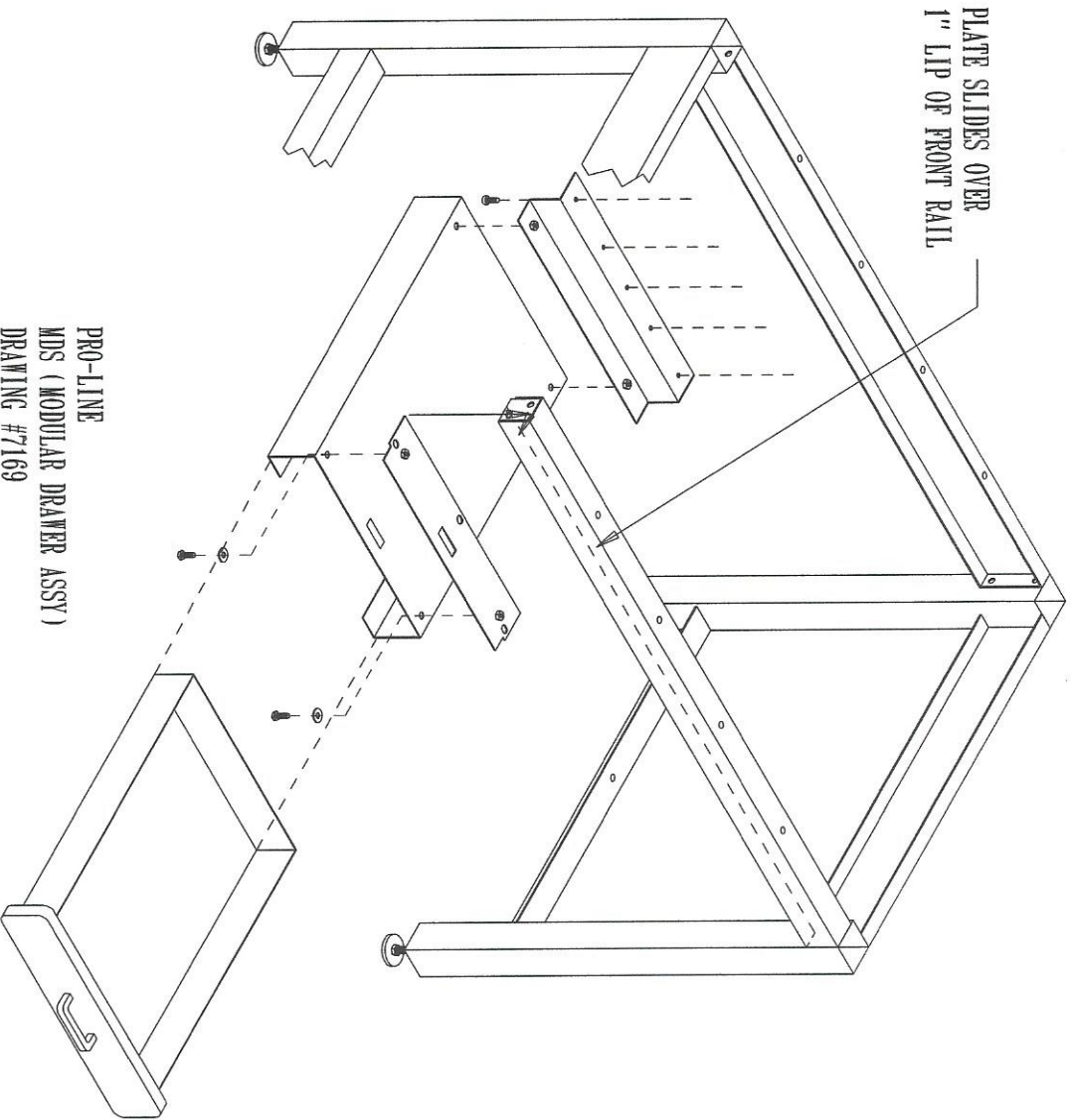
2) SLIDE PADLOCK DRAWER OVER FRONT RAIL OF BENCH SANDWICHING FRONT RAIL BETWEEN PADLOCK DRAWER AND PLATE

3) SET THE PADLOCK DRAWER AS CLOSE TO THE LEFT LEG AS POSSIBLE AND FLUSH WITH THE FRONT RAIL

4) INSTALL #12 PHILLIPS PAN HEAD SCREWS THROUGH REAR BRACKET AND INTO BOTTOM OF THE WORKSURFACE. TIGHTEN THE BOLTS SECURING THE FRONT HANGING PLATE

**** NOTE **** PADLOCK DRAWERS ARE MORE EASILY MOUNTED WHEN BENCH IS FLIPPED UPSIDE DOWN

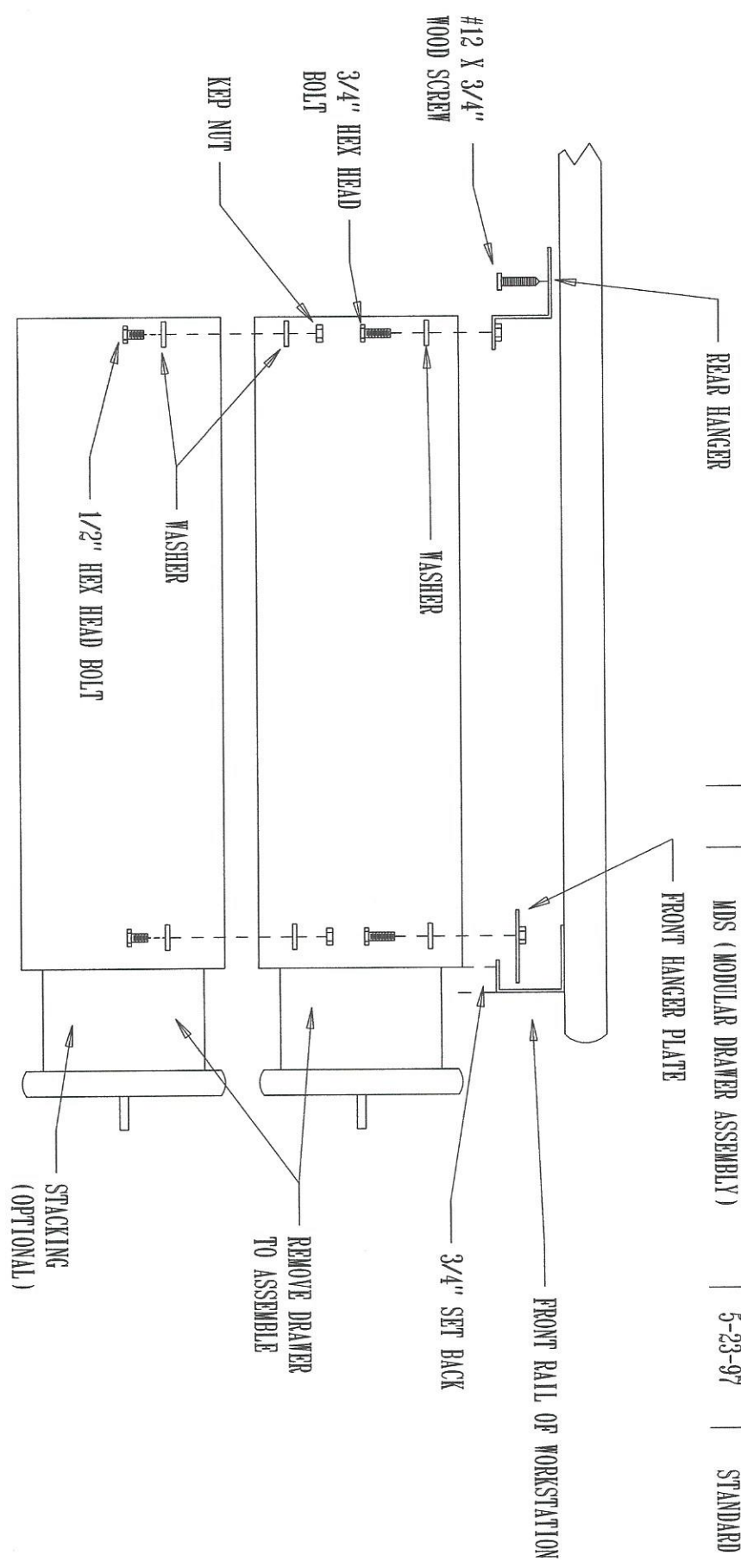
PRO-LINE
 PADLOCK DRAWER ASSEMBLY
 DRAWING #A7283



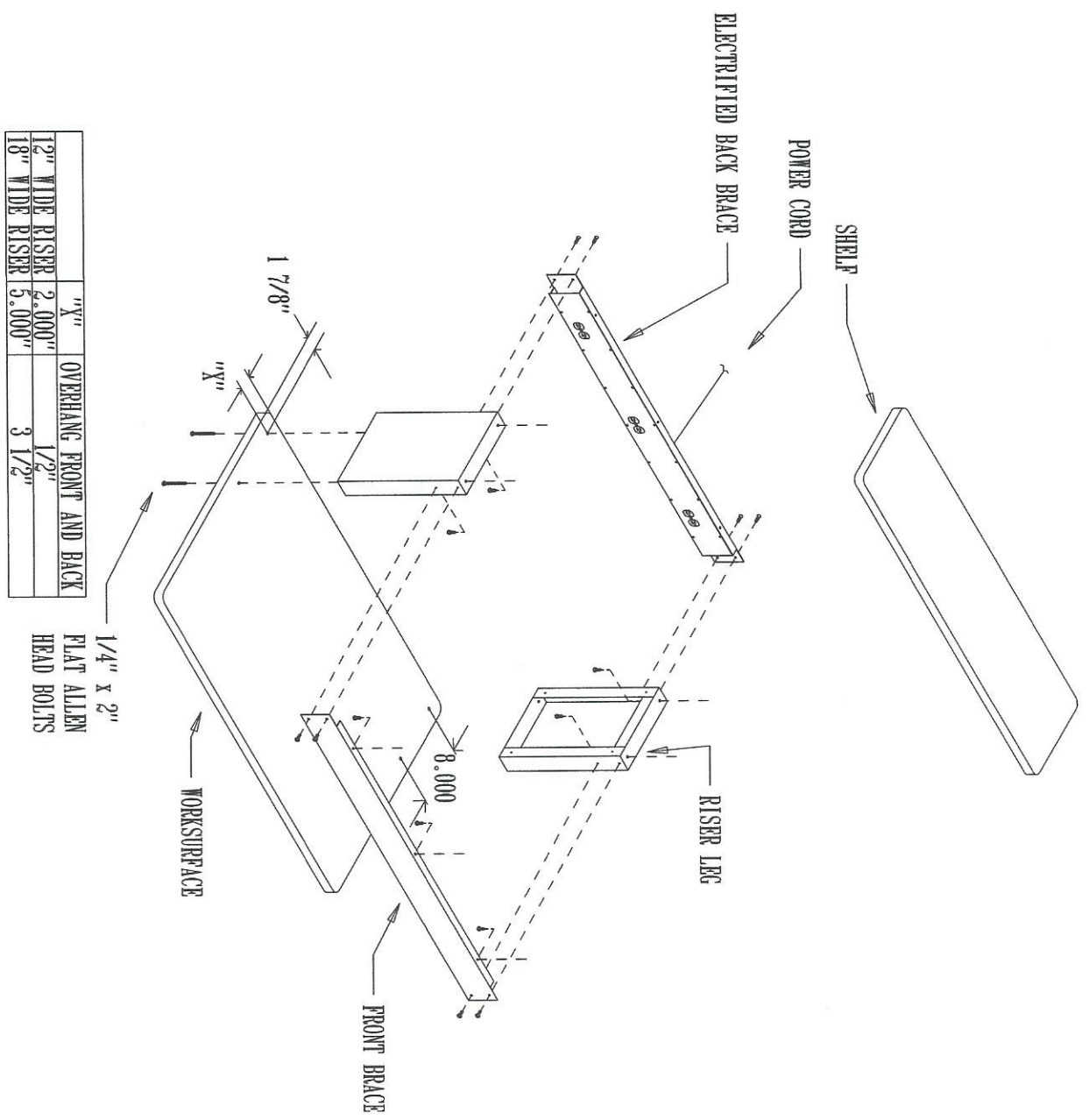
PRO-LINE
MDS (MODULAR DRAWER ASSY)
DRAWING #7169

- 1) REMOVE DRAWER FROM HOUSING
 - 2) MOUNT BRACKETS TO DRAWER USING 1/4" X 3/4" HEX HEAD BOLTS AND WASHERS AS SHOWN (TIGHTEN BOLTS ON REAR BRACKET BUT LEAVE BOLTS ON FRONT PLATE LOOSE)
 - 3) SLIDE HOUSING OVER FRONT RAIL OF BENCH SANDWICHING FRONT RAIL BETWEEN HOUSING AND PLATE
 - 4) SET DRAWER HOUSING A MINIMUM OF 1" AWAY FROM LEG AND 3/4" SET BACK FROM FRONT RAIL
 - 5) INSTALL FIVE (5) #12 PHILLIPS PAN HEAD SCREWS THROUGH REAR BRACKET AND INTO BOTTOM OF THE WORKSURFACE. TIGHTEN THE BOLTS SECURING THE FRONT HANGING PLATE
- ** NOTE ** DRAWERS ARE MORE EASILY MOUNTED WHEN BENCH IS FLIPPED UPSIDE DOWN**

REVISIONS			
REV	DESCRIPTION	DATE	APPROVED
	MDS (MODULAR DRAWER ASSEMBLY)	5-23-97	STANDARD



MICHAEL SUPPLINSKAS		PRO-LINE	
SIZE	PSCM NO.	DWG NO.	REV
SCALE		A771GR-5	
		SHEET	

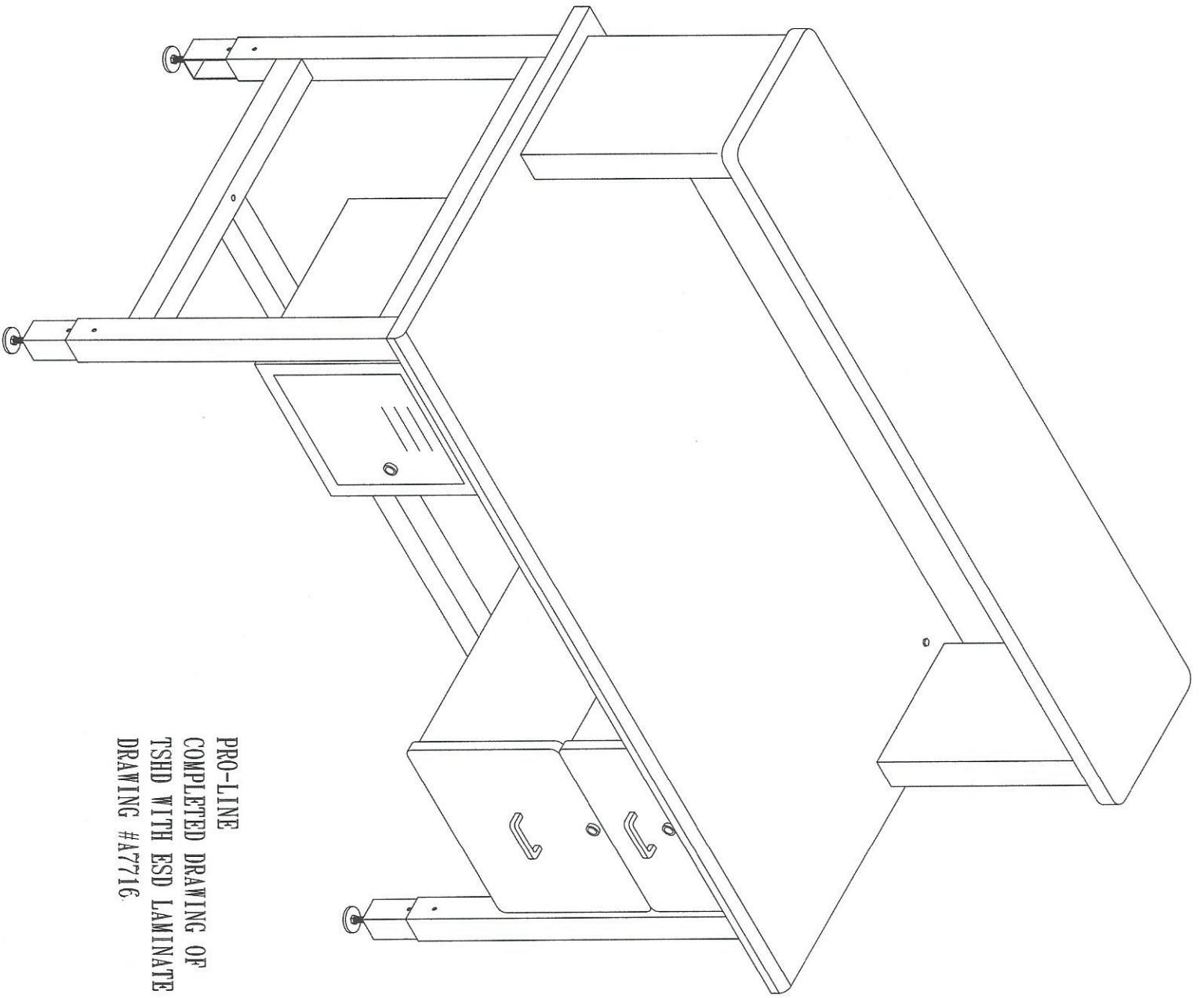


12" WIDE RISER	2.000"	OVERHANG FRONT AND BACK	1/2"
18" WIDE RISER	5.000"		3 1/2"

1/4" x 2"
FLAT ALLEN
HEAD BOLTS

PRO-LINE
RISER SHELF ASSEMBLY (-3 SERIES)
WITH ELECTRIC BACK BRACE
DRAWING #A7279

- 1) IF WORKSURFACE IS NOT ALREADY PREDRILLED, DRILL THE WORKSURFACE WITH 3/8" DIA. DRILL BIT PER DIMENSIONS FOR YOUR PARTICULAR SIZE SHELF ON DRAWING AND CHART.
- 1A) IF YOU HAVE PURCHASED OUR OPTIONAL PANEL COVERS PLEASE REFER TO DRAWING #A7318 (S-2EP ELECTRICAL PANEL) OR DRAWING #A7319 (S-2 ENCLOSURE PANEL) BEFORE CONTINUING TO STEP 2
- 2) MOUNT THE ELECTRICAL BACK BRACE AND FRONT BRACE TO RISER LEGS USING 1/4" - 20 X 3/4" TRUSS HEAD BOLT.
- 3) MOUNT SHELF EVENLY ON RISER ASSEMBLY (FRONT BRACE AND RISER LEGS) USING #12 X 3/4" PHILLIPS PAN HEAD SCREWS (MAKE SURE THAT THE "SEAM OF THE "T" MOLD EDGE IS FACING THE REAR OF THE STATION AND THAT THERE IS EQUAL OVERHANG ON EITHER SIDE AND FOR FRONT TO BACK OVERHANG, LOCATE THAT DIMENSION ON THE CHART
- 4) MOUNT RISER LEG ASSEMBLY TO THE WORKSURFACE WITH 1/4" X 2" FLAT ALLEN HEAD BOLTS PROVIDED.



PRO-LINE
COMPLETED DRAWING OF
TSHD WITH ESD LAMINATE
DRAWING #A7716