



EDGESAFE®
Smart Gate



PATENT
US 10,907,314
& PATENTS
PENDING



Controlled / Quiet
Operation



Approved For
Fall Protection



Adjusts To A Variety
Of Widths

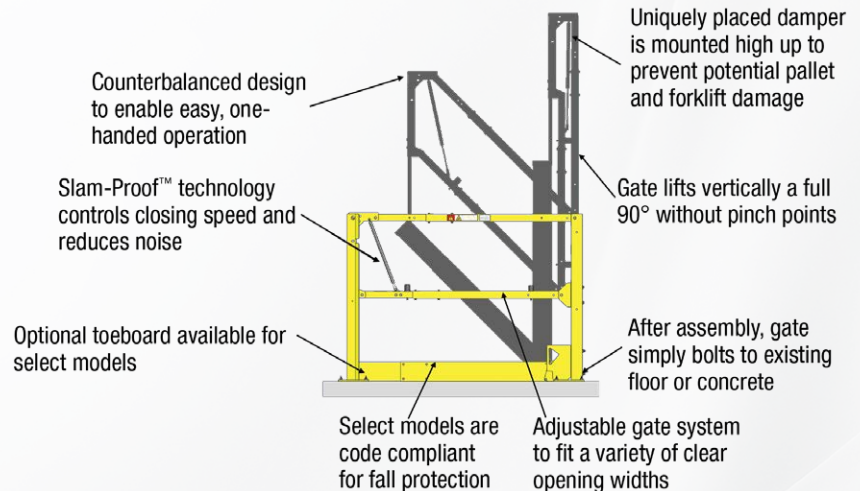
EDGESAFE® SMART GATE

THE SAFEST WAY TO KEEP THINGS MOVING IN YOUR WAREHOUSE

Improve employee and customer safety the smart way by utilizing the EdgeSafe® Smart Gate from PS Safety Access™ in your facility. Customizable to fit your specific applications, our Smart Gate is ideal for a variety of applications, including:

- Loading docks
- Fall protection/railing openings
- Machine guarding
- Equipment protection
- Ground-level traffic/pedestrian control
- Aisle violator
- Area perimeter protection
- Crowd control where forklift traffic (or other machinery) is present
- Mezzanines*

**In applications where the product is positioned to protect a fall-edge, the person operating the product is required to implement another primary means of fall protection whenever the product is not closed.*



START IMPROVING YOUR FACILITY TODAY WITH THE EDGESAFE SMART GATE:

- **Safety That Pays** – The EdgeSafe Smart Gate keeps your team safe while keeping your facility running efficiently
- **Extended Configurations** – Available in both Single (48" to 156") and Double (108" to 324") gate configurations to accommodate a variety of applications and opening sizes ranging from typical to extra large; the Double is well-suited for low headroom and wide area
- **Flexible Sizing** – Gate systems adjustable to fit a variety of clear opening widths
- **Easy Operation** – Counterbalanced design makes it easy for one person to operate the gate smoothly with just one hand
- **Slam-Proof™ Technology** – Features a unique damping system that provides safety to the operator while the gate is closing, controlling speed, reducing noise and adding life to the gate – all while being mounted high enough to prevent it from becoming damaged
- **Lifts Out Of The Way** – The gate lifts vertically 90 degrees (without pinch points) to ensure plenty of clearance
- **Built To Last** – Heavy-gauge steel and a powder coat yellow finish make it ideal for repetitive use
- **Ships Via FedEx Or UPS** – Once assembled, simply bolts to existing floor or concrete
- **Optional Toeboard** – Available for select gate sizes, an optional toeboard (sold separately) helps to increase edge protection from falling objects
- **Operator Push Button Add-On** – An optional push button feature (sold separately) adds an extra layer of protection when used on mezzanines and helps alleviate stress on personnel when utilized in high-use applications
- **Lock-Out Standard On All Gates** – Each model can be locked to prevent unauthorized access

FLEXIBLE SIZING WITH YOUR APPLICATION IN MIND



Access/Operator Workstation Control



Loading Dock Preparation/Fall Protection



Machine Guarding/Equipment Protection



Traffic Control/Operator Workstation Control



Outdoor Access Control



High-Use (With Operator Add On)

Sold separately, this optional add-on allows you to open and close the gate with the simple touch of a button.

STANDARD TECHNICAL DATA

INSTALLATION:

Assembly required; after gate is fully assembled, product simply bolts to existing floor or concrete

MATERIAL:

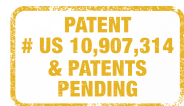
- Gate Rails: 1-3/4" square, mild steel tube, minimum 16-gauge, factory welded
- Gate Post: 3" square, mild steel tube, minimum 12-gauge, factory welded
- Gate Catch: 10-gauge formed mild steel, factory welded
- Fasteners: zinc plated
- Anchors: 3/8" expansion-type concrete anchors for installation into a minimum of 3,000 PSI concrete

FINISH:

Powder Coat Safety Yellow

PERFORMANCE RATING:

One-year warranty from date of shipment, excluding finishes



TYPICAL CONFIGURATIONS

| Gate Model | Clear Opening Widths | Clearance Height | Overall Gate Width |
|------------------------------------|----------------------|------------------|--------------------|
| ESG-60-PCY | 48" - 78" | 95 ½" - 125 ½" | 64" - 94" |
| ESG-96-PCY | 84" - 108" | 131 ½" - 164 ½" | 100" - 124" |
| ESG-120-PCY | 108" - 132" | 164 ½" - 188 ½" | 124" - 148" |
| ESG-144-PCY | 132" - 156" | 188 ½" - 212 ½" | 148" - 172" |
| ESGDBL-120-PCY | 108" - 168" | 95 ½" - 125 ½" | 124" - 184" |
| ESGDBL-192-PCY | 180" - 228" | 131 ½" - 164 ½" | 196" - 244" |
| ESGDBL-240-PCY | 228" - 276" | 164 ½" - 188 ½" | 244" - 292" |
| ESGDBL-288-PCY | 276" - 324" | 188 ½" - 212 ½" | 292" - 340" |
| ESG-60-PCY w/Toeboard (515186) | 42 ½" - 72 ½" | 95 ½" - 125 ½" | 64" - 94" |
| ESG-96-PCY w/Toeboard (515187) | 78 ½" - 102 ½" | 131 ½" - 164 ½" | 100" - 124" |
| ESGDBL-120-PCY w/Toeboard (515186) | 97" - 157" | 95 ½" - 125 ½" | 124" - 184" |

FOR COMPLETE SIZE CHART AND MEASURING GUIDE CLICK THE LINKS BELOW:



EdgeSafe Smart Gate Single - Measuring Guide & Order Form



EdgeSafe Smart Gate Double - Measuring Guide & Order Form



Approved For Fall Protection

Code Compliant:
 OSHA 1910.29,
 ANSI A1264.1-2017,
 ISO 14122-3:2016, and
 Canada OHS SOR-86-304
 Part II code requirements

SINGLE CONFIGURATIONS



Approved For Fall Protection



ESG-60-PCY
 Optional Toeboard (515186) Qty. 1



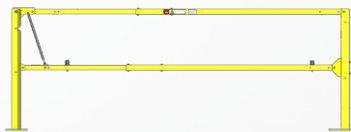
Approved For Fall Protection



ESG-96-PCY
 Optional Toeboard (515187) Qty. 1



Approved For Fall Protection



ESG-120-PCY



Approved For Fall Protection

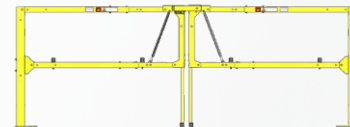


ESG-144-PCY

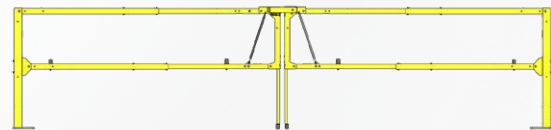
DOUBLE CONFIGURATIONS



Approved For Fall Protection



ESGDBL-120-PCY
 Optional Toeboard (515186) Qty. 2



ESGDBL-192-PCY



ESGDBL-240-PCY



ESG-288-PCY

051722