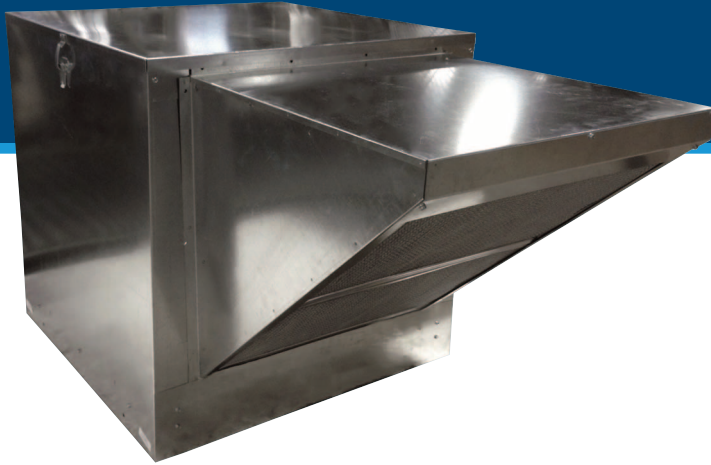


# GREEN SERIES SIGDD-EC

## Side Intake Filtered Fresh Air Supply Units



### FEATURES

- High efficiency direct drive motor for energy efficient low maintenance applications.
- Side intake provides a means to meet supply and exhaust air separation in restaurant applications.
- Easy on-site addition of customer supplied air supply duct extension provides additional separation where necessary.
- Filters designed with large surface area for efficient filtration.
- Galvanized finish.
- EC Motor offers true variable speed operation and up to 70% energy savings over PSC motors.

### PERFORMANCE SPECIFICATIONS

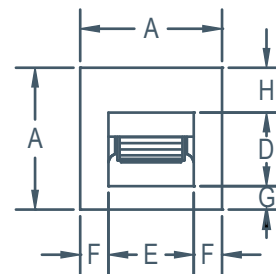
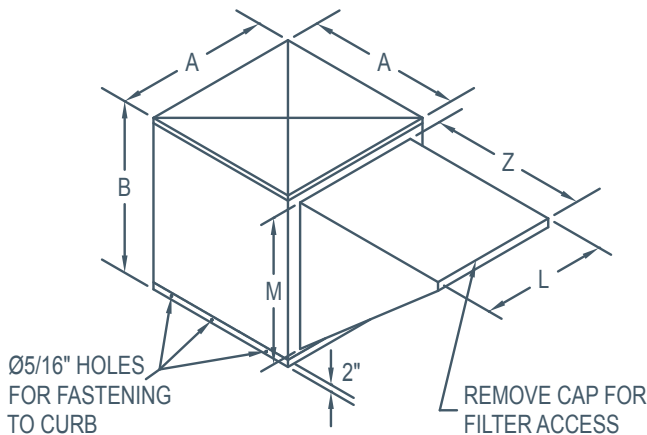
MODEL	MOTOR				AIRFLOW (CFM @ Static Pressure)																			
	HP	Variable Speed	Max RPM	Speed	1/4"				1/2"				3/4"				1"				1 1/4"			
					CFM	BHP	FEI	FEPact (KW)	CFM	BHP	FEI	FEPact (KW)	CFM	BHP	FEI	FEPact (KW)	CFM	BHP	FEI	FEPact (KW)	CFM	BHP	FEI	FEPact (KW)
SIG9DD050EC	1/2	Y*	1200	high low	1550 600	- -	- -	- -	1450 600	- -	- -	- -	1350 600	- -	- -	- -	1200 500	- -	- -	- -	450 400	- -	- -	- -
SIG9DD100EC	1	Y*	1200	high low	2000 600	0.98 0.08	0.65 1.69	0.87 0.11	1944 600	1.00 0.12	0.74 1.62	0.89 0.14	1700 600	0.87 0.18	0.86 1.44	0.78 0.20	1186 500	0.55 0.24	1.07 1.20	0.52 0.25	350 350	0.28 0.28	1.00 1.00	0.28 0.28
SIG10DD050EC	1/2	Y*	1100	high low	1750 600	- -	- -	- -	1400 400	- -	- -	- -	1150 400	- -	- -	- -	800 400	- -	- -	- -	- -	- -	- -	- -
SIG10DD100EC	1	Y*	1100	high low	2280 600	0.99 0.10	0.68 1.44	0.88 0.13	2050 400	0.98 0.10	0.74 1.62	0.87 0.13	1800 400	0.96 0.23	0.78 0.94	0.86 0.24	1379 400	0.83 0.33	0.81 0.81	0.75 0.33	669 300	0.57 0.37	0.77 0.73	0.53 0.36
SIG12DD050EC	1/2	Y*	1000	high low	2300 600	- -	- -	- -	1925 400	- -	- -	- -	1500 400	- -	- -	- -	850 400	- -	- -	- -	600 300	- -	- -	- -
SIG12DD100EC	1	Y*	1000	high low	3100 600	0.99 0.08	0.84 1.65	0.88 0.11	2800 400	0.99 0.13	0.92 1.22	0.88 0.15	2550 400	1.00 0.21	0.99 1.01	0.89 0.22	2254 400	0.99 0.31	1.03 0.85	0.88 0.31	1650 300	0.97 0.35	0.91 0.77	0.87 0.35

\* Minimum motor speed 425 RPM (EC Models)

EC motors can be controlled using the built in potentiometer on motor or by using a 0 to 10 V controller, or by a remote potentiometer.

**\*REVIEW FAN CURVES BEFORE ADJUSTING RPM TO ENSURE LOAD DOES NOT EXCEED MOTOR HP.**

### DIMENSIONS



BOTTOM VIEW

MODEL	A	B	D	E	F	G	H	L	M	Z	FILTERS		*INSIDE CABINET	UNIT WEIGHT (LBS) (without motors & drives)
											SIZE	QUANTITY		
SIG-9DD	22"	24"	10 1/4"	11 7/8"	5"	3 7/8"	7 7/8"	19 3/8"	18 1/8"	19 7/8"	16" x 25" x 1"	1	21 7/8" x 21 7/8"	78 lbs
SIG-10DD	22"	24"	11 7/8"	13 1/4"	4 7/16"	3 1/4"	6 7/8"	19 3/8"	18 1/8"	19 7/8"	16" x 25" x 1"	1	21 7/8" x 21 7/8"	92 lbs
SIG-12DD	32"	32"	13 3/4"	15 7/8"	8 1/16"	9 1/4"	9"	25"	24 5/8"	25"	16" x 25" x 1"	2	31 7/8" x 31 7/8"	130 lbs

\* Curb size to be smaller than inside cabinet to allow for flashing and roofing.

\*\* Includes filter section.