

KLUTCH

60ft. Electric Drain Cleaner

Owner's Manual



⚠ WARNING: Read carefully and understand all ASSEMBLY AND OPERATION INSTRUCTIONS before operating. Failure to follow the safety rules and other basic safety precautions may result in serious personal injury.

Items #62082 & #62083

SAVE THESE INSTRUCTIONS

Thank you very much for choosing a Klutch™ product!

For future reference, please complete the owner's record below:

Serial Number/Lot Date Code: _____

Purchase Date: _____

Save the receipt, warranty, and this manual. It is important that you read the entire manual to become familiar with this product before you begin using it.

This electric drain cleaner is designed for certain applications only. Northern Tool and Equipment is not responsible for issues arising from modification or improper use of this product such as an application for which it was not designed. We strongly recommend that this product not be modified and/or used for any application other than that for which it was designed.

For technical questions, please call **1-800-222-5381**.

Table of Contents

Intended Use.....	4
Technical Specifications	4
Important Safety Information	4
Specific Operation Warnings	7
Grounding	7
Extension Cords.....	9
Main Parts of Drain Cleaner	9
Assembly Instructions.....	10
Before Each Use.....	12
Operating Instructions.....	12
After Each Use.....	22
Maintenance	22
Troubleshooting.....	23
Parts Diagram	25
Parts List	27
Replacement Parts	27
Limited Warranty	28

Intended Use

The Klutch 60ft. Electric Drain Cleaner is intended for household use only. There are four cutting tools included with each drain cleaner. Select the appropriate tool for the cleaning job and attach to cable. Ideal for cleaning floor drains, roof vents, and sink lines.

1. Starting tool: Spade cutter for cutting and scraping.
2. Starting tool: Boring bulb cutter for removing loose objects.
3. Finishing tool: C-cutter for grease stoppages and cleaning pipe walls.
4. Finishing tool: 2-piece arrow cutter for scraping the inside edges of pipes.

Technical Specifications

Property	Item #62082	Item #62083
AC Volts	120 VAC, 60 Hz	120 VAC, 60 Hz
Amperage	5.3 AMP	5.3 AMP
Cable Gauge	1/2" dia. X 60' L	1/2" dia. x 60' L
Drain Line Capacity	2" to 4" I.D.	2" to 4" I.D.
Material	Steel	Steel
Motor Speed	1716 RPM	1716 RPM
Product Dimensions (H x L x W)	21-1/4" x 13" x 21-1/4"	24" x 17" x 36"
Shipping Weight	78 lb.	93 lb.
Drum Dimensions	13" x 6.3"	13" x 6.3"

Important Safety Information

⚠️WARNING

- Read and understand all instructions. Failure to follow all instructions may result in serious injury or property damage.
- The warnings, cautions, and instructions in this manual cannot cover all possible conditions or situations that could occur. Exercise common sense and caution when using this tool. Always be aware of the environment and ensure that the tool is used in a safe and responsible manner.
- Do not allow persons to operate or assemble the product until they have read this manual and have developed a thorough understanding of how it works.
- Do not modify this drain cleaner in any way. Unauthorized modification may impair the function and/or safety and could affect the life of the product. There are specific applications for which the product was designed.
- Use the right tool for the job. DO NOT attempt to force small equipment to do the work of larger industrial equipment. There are certain applications for which this equipment was designed. It will do the job better and more safely at the capacity for which it was intended. DO NOT use this equipment for a purpose for which it was not intended.
- Industrial or commercial applications must follow OSHA requirements.

⚠️WARNING

WORK AREA SAFETY

- Inspect the work area before each use. Keep work area clean, dry, free of clutter, and well lit. Cluttered, wet, or dark work areas can result in injury. Using the drain cleaner in confined work areas may put you dangerously close to cutting tools and rotating parts.
- Do not use the drain cleaner where there is a risk of causing a fire or an explosion; i.e., in the presence of flammable liquids, gases, or dust. The product can create sparks, which may ignite the flammable liquids, gases, or dust.
- Do not allow the drain cleaner to come into contact with an electrical source. The drain cleaner is not insulated and contact will cause electrical shock.
- Keep children and bystanders away from the work area while operating the drain cleaner. Do not allow children to handle the drain cleaner.
- Be aware of all power lines, electrical circuits, water pipes, and other mechanical hazards in your work area. Some of these hazards may be hidden from your view and may cause personal injury and/or property damage if contacted.

⚠️WARNING

PERSONAL SAFETY

- Stay alert, watch what you are doing, and use common sense when operating the drain cleaner. Do not use the drain cleaner while you are tired or under the influence of drugs, alcohol, or medication. A moment of inattention while operating the drain cleaner may result in serious personal injury.
- Dress properly. Do not wear loose clothing, dangling objects, or jewelry. Keep your hair, clothing and gloves away from moving parts. Loose clothes, jewelry, or long hair can be caught in moving parts. Air vents on the tool often cover moving parts and should be avoided.
- Wear the proper personal protective equipment when necessary. Use ANSI Z87.1 compliant safety goggles (not safety glasses) with side shields, or when needed, a face shield. Use a dust mask in dusty work conditions. Also use non-skid safety shoes, hardhat, gloves, and hearing protection when appropriate. This applies to all persons in the work area.
- Do not overreach. Keep proper footing and balance at all times.
- Ensure the power switch is off prior to plugging in the drain cleaner.

⚠️WARNING

ELECTRICAL SAFETY

- Grounded tools must be plugged into an outlet properly installed and grounded in accordance with all codes and ordinances. Never remove the grounding prong or modify the plug in any way. Do not use any adapter plugs. Check with a qualified electrician if you are in doubt as to whether the outlet is properly grounded. If the tools should electrically malfunction or break down, grounding provides a low resistance path to carry electricity away from the user.
- Double insulated tools are equipped with a polarized plug (one blade is wider than the other).

This plug will fit in a polarized outlet only one way. If the plug does not fit fully in the outlet, reverse the plug. If it still does not fit, contact a qualified electrician to install a polarized outlet. Do not change the plug in any way. Double insulation eliminates the need for the three wire grounded power cord and grounded power supply system.

- Do not allow the drain cleaner to come into contact with an electrical source. The tool is not insulated and contact will cause electrical shock.
- Avoid body contact with grounded surfaces such as pipes, radiators, ranges, and refrigerators. There is an increased risk of electric shock if your body is grounded.
- Do not expose power tools to rain or wet conditions. Water entering a power tool will increase the risk of electric shock.
- Do not abuse the power cord. Never use the power cord to carry the tools or pull the plug from an outlet. Keep the power cord away from heat, oil, sharp edges, or moving parts. Replace damaged power cords immediately. Damaged power cords increase the risk of electric shock.
- When operating a power tool outside, use an outdoor extension cords marked "W-A" or "W". These extension cords are rated for outdoor use, and reduce the risk of electric shock.

⚠ CAUTION

DRAIN CLEANER USE AND CARE

- Do not force the drain cleaner. Products are safer and do a better job when used in the manner for which they are designed. Plan your work, and use the correct product for the job.
- Check for damaged parts before each use. Carefully check that the drain cleaner will operate properly and perform its intended function. Replace damaged or worn parts immediately. Never operate the drain cleaner with a damaged part.
- Do not use a drain cleaner with a malfunctioning switch. Any power tool that cannot be controlled with the power switch is dangerous and must be repaired by an authorized service representative before using.
- Disconnect the power supply from the product and place the switch in the locked or off position before making any adjustments, changing accessories, or storing the tool. Such preventive safety measures reduce the risk of starting the tool accidentally.
- Store the drain cleaner when it is not in use. Store it in a dry, secure place out of the reach of children. Inspect the tool for good working condition prior to storage and before re-use.
- Use only accessories that are recommended by the manufacturer for use with your drain cleaner. Accessories that may be suitable for one product may create a risk of injury when used with another tool. Never use an accessory that has a lower operating speed or operating pressure than the tool itself.
- Keep guards in place and in working order. Never operate the product without the guards in place.
- Do not leave the drain cleaner running unattended

Specific Operation Warnings

⚠️WARNING

- To prevent serious injury or property damage read and understand owner's manual before operating.
- To reduce the risk of injury from moving parts, unplug before servicing.
- To reduce the risk of electric shock, unplug before cleaning or servicing.
- Risk of electric shock. Keep extension cord connection dry and off the ground.
- DO NOT modify the grounded plug or other parts of the drain cleaner.
- DO NOT wear cloth gloves or loose clothing to prevent entanglement.
- To prevent cable from whipping, place drain cleaner as close to drain line as possible (within 2 feet) or thread cable through guide (not included).
- DO NOT allow the excess cable to build up outside the drain. This can cause the cable to twist, kink, or break.
- Always keep one hand on the cable at all times to prevent cable form whipping.
- Only operate the drain cleaner with one person.
- Wear ANSI Z87.1 compliant splash-resistant safety goggles under face shield, NIOSH compliant dust mask/respirator, and heavy-duty LEATHER gloves during use.
- To prevent slipping and electric shock, wear rubber soled, non-slip shoes.
- DO NOT use in pipes containing drain cleaning chemicals.
- DO NOT operate without guards in place.
- Inspect the drain cleaner for missing or damaged parts before operating.
- Replace missing or damaged parts before continuing use.
- Inspect cutting tools for excessive wear or damage before operating. Replace excessively worn or damaged cutting tools before continuing use.
- Inspect the cable for damage (including multiple or excessive kinks greater than 15 degrees). Replace cable if damaged before continuing use.
- Inspect cable for corrosion and replace when heavily corroded.

Grounding

⚠️WARNING

- This machine must be grounded while in use to protect the operator from electrical shock. This drain cleaner is equipped with an electrical cord that has an equipment grounding conductor and a grounding plug. The plug **MUST** be plugged into a matching receptacle that is properly installed and grounded in accordance with ALL local codes and ordinances.
- **DO NOT MODIFY THE PROVIDED PLUG.** If it will not fit the receptacle, have the proper receptacle installed by a qualified electrician.

- CHECK with a qualified electrician or service person if you do not completely understand the grounding instructions, or if you are not sure the tool is properly grounded.

Grounded Tools: Tools with 3-Prong Plugs

Tools marked with **Grounding Required** have a 3-wire cord and 3-prong grounding plug. The plug must be connected to a properly grounded outlet. If the drain cleaner should electrically malfunction or break down, grounding provides a low resistance path to carry electricity away from the user, reducing the risk of electric shock. (See Figure A.)

The grounding prong in the plug is connected through the green wire inside the cord to the grounding system in the drain cleaner. The green wire in the cord must be the only wire connected to the tool's grounding system and must never be attached to an electrically live terminal.

The drain cleaner must be plugged into an appropriate outlet, properly installed, and grounded in accordance with all codes and ordinances. The plug and outlet should look like those in the following illustration.

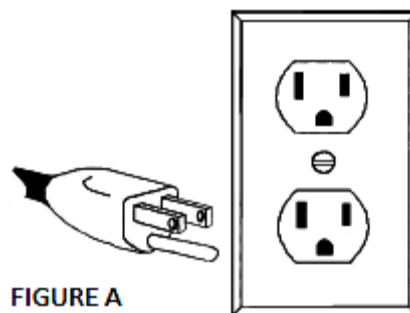


FIGURE A

Double Insulated Tools: Tools with Two-Prong Plugs

Tools marked **Double Insulated** do not require grounding. They have a special double insulation system which satisfies OSHA requirements and complies with the applicable standards of Underwriters Laboratories, Inc., the Canadian Standard Association, and the National Electrical Code. (See Figure B.)

Double insulated tools may be used in either of the 120 volt outlets shown in the following illustration.

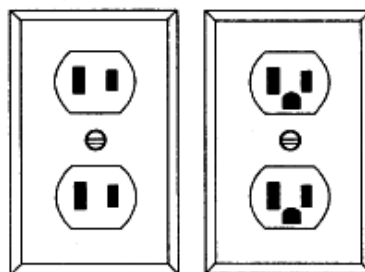


FIGURE B

Extension Cords

⚠ WARNING

- **USE A PROPER EXTENSION CORD.** Make sure your extension cord is in good condition. When using an extension cord, be sure to use one heavy enough to carry the current your drain cleaner will draw. An undersized cord will cause a drop in line voltage, resulting in loss of power and cause overheating.
- Be sure your extension cord is properly wired and in good condition. Always replace a damaged extension cord or have it repaired by a qualified person before using it. Protect your extension cords from sharp objects, excessive heat and damp or wet areas.

- Grounded tools require a 3-wire extension cord. Double Insulated tools can use either a 2- or 3-wire extension cord.
- As the distance from the supply outlet increases, you must use a heavier gauge extension cord. Using extension cords with inadequately sized wire causes a serious drop in voltage, resulting in loss of power and possible tool damage.
- The smaller the wire's gauge number, the greater the capacity of the cord. For example, a 14-gauge cord can carry a higher current than a 16-gauge cord. Minimum extension cord wire size is shown in the following table:

Minimum Wire Size of Extension Cords				
Nameplate AMPS	Cord Length			
	25'	50'	100'	150'
0-6	18 AWG	16 AWG	16 AWG	14 AWG
6-10	18 AWG	16 AWG	14 AWG	12 AWG
10-12	16 AWG	16 AWG	14 AWG	12 AWG
12-16	14 AWG	12 AWG	NOT RECOMMENDED	

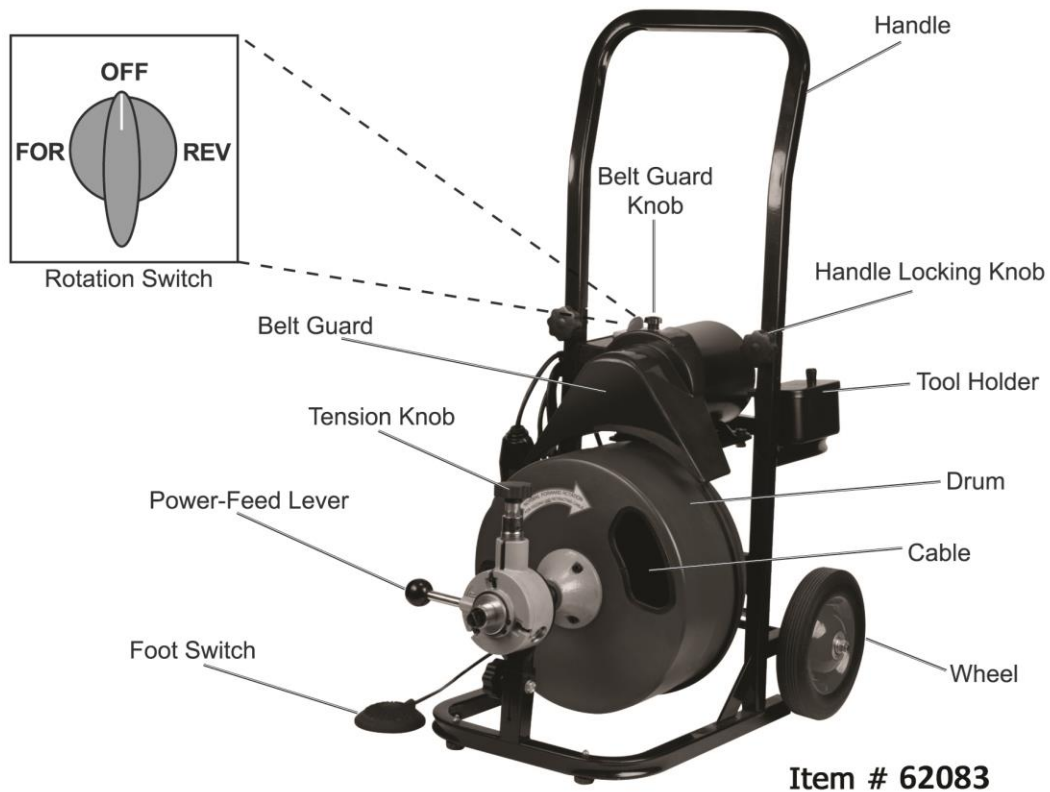
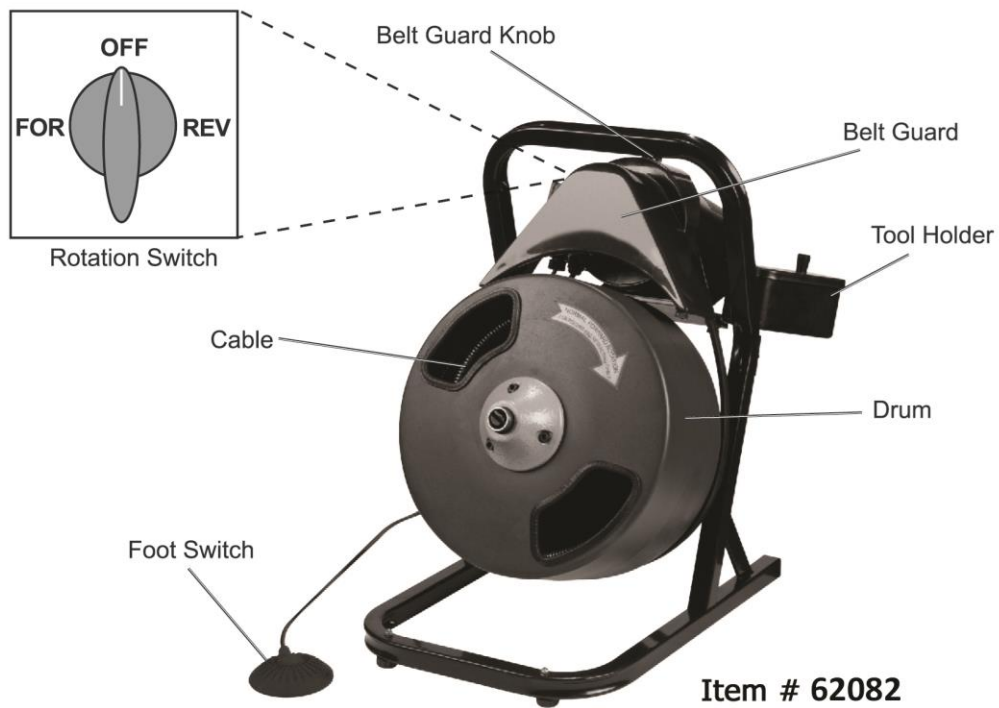
- When using more than one extension cord to make up the total length, make sure each cord contains at least the minimum wire size required.
- If you are using one extension cord for more than one tool, add the nameplate amperes and use the sum to determine the required minimum cord size.
- If you are using an extension cord outdoors, make sure it is marked with the suffix **W-A** (**W** in Canada) to indicate it is acceptable for outdoor use.
- Protect your extension cords from sharp objects, excessive heat, and damp or wet areas.

Main Parts of Drain Cleaner

Read the ENTIRE IMPORTANT SAFETY INFORMATION section at the beginning of this manual, including all text under the subheadings, before set up or use of this product.

Note: No assembly needed for Item #62082.

User-Operated Controls:



Assembly Instructions

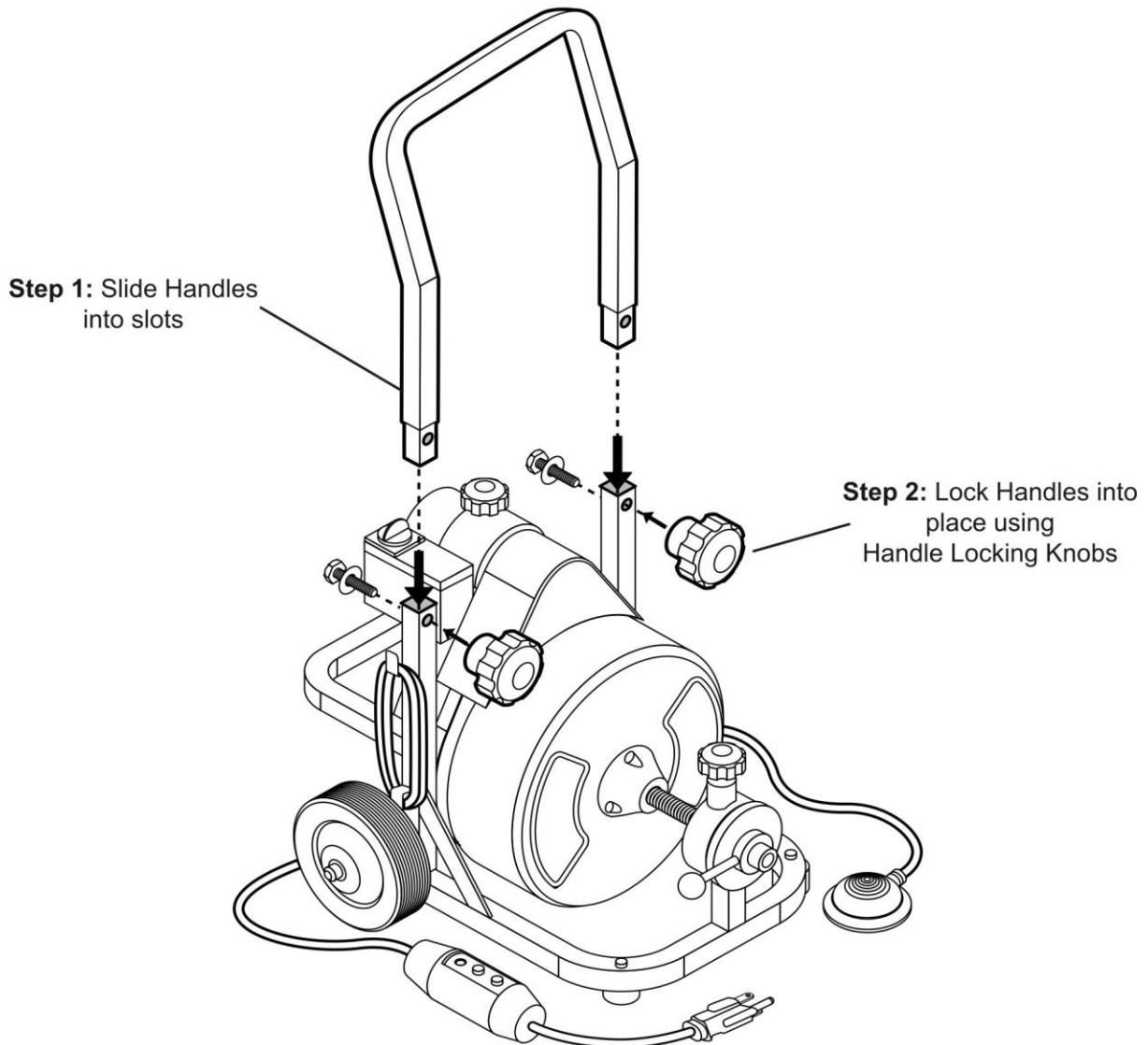
⚠ WARNING

- Read the ENTIRE IMPORTANT SAFETY INFORMATION section at the beginning of this manual

including all text under subheadings therein before set up or use of this product.

- To prevent serious injury from accidental operation:
- Turn the rotation switch of the tool to its OFF position and unplug the tool from its electrical outlet before assembling or making any adjustments to the tool.

Assembly for #62083



Note: If the cause of the obstruction is unknown, use the boring bulb cutter to explore the obstruction and, if possible, retrieve a piece to inspect. Once you can see the cause of the obstruction, select the appropriate tool for the job. Run the smallest available tool through the blockage to allow the backed up water to flow and carry away the debris as the drain is cleaned.

Once the drain is flowing, more appropriate tools can be used on the rest of the blockage.

Keep in mind that the largest tool used should be no bigger than the drain's inside diameter, minus an inch.

If properly used, the drain cleaners and assorted cutting tool accessories will not damage a drain that is in good condition, properly designed, constructed, and maintained.

However, if the drain is in poor condition or has not been properly designed, the drain cleaning may damage the drain. If possible, visually inspect the drain's quality before operation.

This drain cleaner is intended for household use only.

Before Each Use

⚠WARNING

If the supply cord of this appliance is damaged, it must be replaced only by a qualified service technician.

Before using, inspect the general condition of the tool. Check for:

- Loose hardware
- Misalignment or binding of moving parts
- Cracked or broken parts
- Damaged electrical wiring
- Any other condition that may affect safe operation

Operating Instructions

⚠WARNING

To prevent serious injury, turn the rotation switch of the drain cleaner to the OFF position and unplug the tool from its electrical outlet before assembling or making any adjustments to the tool.

Cutting Tool Accessories

There are four cutting tools included with each drain cleaner. Select the appropriate tool for the cleaning job and attach to the cable. Each is described below.

Spade cutter

Starting tool

For cutting and scraping.



c-cutter

Finishing tool

For grease stoppages and cleaning pipe walls.



Boring Bulb cutter

Starting tool
For removing loose objects.



Arrow cutter (2 pieces)

Finishing tool
For scraping the inside edges of pipes.



⚠️WARNING

TO PREVENT SERIOUS INJURY FROM ACCIDENTAL OPERATION:

- Turn the rotation switch of the tool to the OFF position and unplug the tool from its electrical outlet before assembling or making any adjustments to the tool.
- DO NOT OPERATE WITH ANY GUARD DISABLED, DAMAGED, OR REMOVED.

Tool Set-Up

When setting up the drain cleaner, wear ANSI-approved, splash-resistant, safety goggles and a NIOSH-approved, dust mask or respirator under a face shield. It's also important to wear heavy-duty LEATHER gloves and any other appropriate protective equipment. For extra protection from chemicals and bacteria on the appliance and in the work area, wear latex, rubber, or other liquid barrier gloves under the heavy-duty leather work gloves. Before use, inspect the gloves to be sure they are free of defects or loose sections that could be caught in the drain cleaner cable. Rubber-soled, non-slip shoes can help prevent slipping and electric shock, especially on wet surfaces.

To prevent serious injury from electric shock, twisted or broken cables, chemical burns, infections, and other causes, and to prevent drain cleaner damage, before each use, inspect the drain cleaner and correct any problems by doing the following:

1. Once the drain cleaner is assembled, check the appliance and cutting tools for any signs of wear and damage. If necessary, replace worn or damaged parts prior to using the drain cleaner. Dull or damaged cutting tools can lead to binding, cable breakage, and slow the drain cleaning.
2. Verify that the drain cleaner is unplugged and inspect the power cord, Ground Fault Circuit Interrupter (GFCI), and plug for damage. If the plug has been modified, is missing the grounding prong, or if the cord is damaged, to avoid electrical shock, do not use the appliance until the cord has been replaced by a qualified electrician.
3. Clean any oil, grease, or dirt from all equipment handles and controls. This helps prevent the appliance or control from slipping during use.
4. Verify that the foot switch is attached to the drain cleaner.
5. Verify that the drain cleaner is properly assembled. Inspect the appliance for broken, worn, missing, misaligned, or binding parts, or any other condition which may prevent safe and normal operation.
6. Make sure that the switches and handles move smoothly between positions and lock in place.

7. Rotate the drum and make sure that it turns freely without binding.
8. Check that all warning labels are present, firmly attached, and readable.
9. Make sure belt guard is securely fastened to the drain cleaner.
10. Check the cable for any wear and damage. If any section of the cable is worn or flattened, replace the cable before use.
11. Verify the cable does not have multiple or excessive kinks (greater than 15°). Kinks weaken the cable and can cause cable failure. Replace any cables that have multiple or excessively large kinks.
12. Look for spaces between the cable coils. Kinking, stretching (pulling cable by hand), or running the cable in reverse can deform the cable. Cables with spaces between the coils should be replaced.
13. Check for signs of excessive corrosion. Corrosion weakens the cable, making it brittle. This can be caused by storing the cable wet or using the cable with corrosive chemicals (often found in chemical clog removers). Excessively corroded cable should be replaced.
14. Before using, fully retract the cable with no more than 2" of cable outside of the appliance. This will keep the cable from whipping when the appliance is turned on.
15. Set the rotation switch to the OFF position.
16. With dry hands, plug the cord into the properly grounded outlet and move the rotation switch into the FOR position.
17. Move the power-feed lever between the F and the R settings, otherwise the cable will start moving in or out during this test.
18. Press the foot switch and note the drum's direction of rotation. If the foot switch does not control the drain cleaner's operation, do not use the appliance until the foot switch has been repaired.
19. The drum should rotate clockwise when viewed from the front of the drum. It will match the drum direction arrow on the drum. If the rotation is not correct, do not use the appliance until it has been repaired.
20. After inspection, set the rotation switch to OFF, dry off your hands, and unplug the drain cleaner.
21. Once you've verified that the drain cleaner is in good working order, inspect the work area where you will be using the appliance.

Work Area Set-Up

1. Verify that your work area has adequate lighting for the job.
2. Make sure your work area is free of flammable liquids, vapors, or dust that may ignite. Sparks can be generated during drain cleaner operation. Do not work in an area until these sources of ignition have been identified and corrected.
3. Choose a firm, stable location for the appliance and operator that will remain relatively dry. Do not use the appliance while standing in water. If needed, remove the water from the work area.
4. Verify the electrical outlet is properly grounded. A three-prong or GFCI outlet may not be properly grounded. If in doubt, have the outlet inspected by a licensed electrician.

5. Make sure there is a clear, unobstructed path from the drain cleaner to the electrical outlet.
6. Inspect the drain to be cleaned. If possible, determine the best access point(s) to the drain, the size(s) and length(s) of the drain, distance to the tanks or mainlines, the nature of the blockage, presence of drain cleaning chemicals or other chemicals, etc.
7. If there are chemicals present in the drain, read and adhere to the specific safety measures required to work around those chemicals. Contact the chemical manufacturer for required safety instructions and information.
8. If necessary, remove the fixture (toilet, sink, etc.) to allow access to the drain. Do not feed the cable through a fixture. This could damage the drain cleaner and the fixture.
9. Determine the correct drain cleaning cable size for the drain cleaning job. See the chart below.

Cable Size	Pipe Size	Typical Applications
1/2"	2" to 4"	<ul style="list-style-type: none"> • Roof stacks • Laundry lines • Small drains (no roots)

10. If needed, place protection over the work floor area. Cleaning a clogged drain can be messy.
11. Make sure that the drain cleaner handle is locked into the upright position for transport. If the drain cleaner needs to be lifted, use proper lifting techniques or seek assistance if needed. Use caution when moving equipment up and down stairs. Wear appropriate footwear to help prevent slipping on floor.
12. To prevent the cable from whipping, place the drain cleaner within two feet of the drain line. The greater the distance from the drain access, the higher the risk of the cable twisting or kinking.
13. If the drain cleaner cannot be placed within two feet of the drain access, use appropriate-sized pipes and fittings to extend the drain access back to within two feet of the drum opening. Improper cable support can allow the cable to kink and twist and can damage the cable or injure the operator.
14. If needed, set up barriers to keep bystanders away from the drain cleaner and work area during operation.
15. Select the proper cutting tool.
16. Install the cutting tool to the end of the cable. Slide the base of the cutting tool into the slot at the end of the cable. Fasten them together using a screwdriver.
17. Position the foot switch for easy accessibility. You must be able to hold and control the cable, control the foot switch, and reach the rotation switch.
18. Confirm that the rotation switch is in the OFF position.
19. Run the cord along the clear path. With dry hands, plug the drain cleaner into a properly grounded outlet. Keep all connections dry and off the ground.

20. If the power cord is not long enough, use an extension cord that is in good condition and has a three prong plug similar to the one supplied on the drain cleaner. Keep the connection off the ground to prevent it from accidentally getting wet.
21. Also verify that the extension cord is rated for outdoor use and contains a W or W-A in the cord designation (i.e. SOW).
22. Verify the extension cord has sufficient wire size (16 AWG for 50' or less, 14 AWG for 50' - 100' long). Undersized wires can overheat, melting the insulation or causing a fire or other damage.
23. When using an extension cord, the GFCI on the drain cleaner does not protect the extension cord. If the outlet is not GFCI protected, use a plug-in type GFCI between the outlet and the extension cord. This will reduce the risk of shock if there is a fault in the extension cord.

Manual Feed Operation (Item #62082)

⚠WARNING

To prevent serious injury from twisted or broken cables, cable ends whipping around, an appliance tipping, chemical burns, infections, electric shock, and other causes, conscientiously follow the operating instructions for your product model. Since drains likely contain hazardous chemicals or bacteria, wear appropriate protective equipment, such as:

- ANSI-approved, splash-resistant, safety goggles and NIOSH-approved, dust mask or respirator under a face shield.
- Latex, rubber, or other liquid barrier gloves under heavy-duty leather work gloves. Do not use a glove you are not currently wearing or a rag to hold the rotating cable. Cloth materials can tangle in the rotating cable, leading to a serious personal injury. Before using, inspect gloves to be sure they are free of defects or loose sections that could get caught in the drain cleaner.
- Rubber-soled, non-slip shoes to help prevent slipping and electric shock.

1. To prevent the cable from whipping, place the drain cleaner within two feet of the drain line.
2. Position the drain cleaner so that you can operate the foot switch while having one hand on cable at all times. This will keep the cable from hazardously whipping when activating the drain cleaner. Also, make sure the rotation switch on the top of drain cleaner is within reach.

⚠WARNING

Only one person should feed the cable and operate the foot switch. Do not operate the drain cleaner with one person controlling the cable and another person controlling the foot switch.

This can cause the cable to kink, twist, or break, which can also lead to a serious personal injury.

3. Make sure the rotation switch is in the FOR position.
4. With the drain cleaner off, pull the cable out of the drum with both gloved hands and feed into the drain. Gradually work the cable as far into the drain as it will go.
5. Step on the foot switch and continue feeding the cable into the drain.

6. As you feed cable, you may feel and see cable slow down and/or start to wind or load up (a twisting or squirming motion). This may indicate a change in the drain line (such as a drain trap, elbow, etc.), a build-up in the drain (mud or grease), or the actual blockage. Continue to slowly feed the cable until it reaches the blockage.

⚠WARNING

Do not allow the cable to build up outside the drain. This can cause the cable to twist, kink, or break. When working with larger sewers or septic tanks, minimize the amount of cable fed to prevent kinking and knotting of the cable.

7. If the cable becomes lodged in the narrow part of the drain or in a drain trap, allow the cable to try and work itself past the obstruction. If the cable still won't pass obstruction, release pressure from the foot switch and use sharp downward thrusts to try and pass obstruction. Once the cable has passed, press the foot switch and continue feeding.



Note:

The rotation switch controls the rotation of the drum only. **DO NOT USE THE ROTATION SWITCH IN THE REV POSITION WHILE REMOVING THE CABLE FROM THE PIPE.** Use the reverse direction only momentarily to relieve pressure or to untangle cable from a blockage. Warranty will be void if the cable is damaged from allowing the motor to twist excessively against the blockage, or if the drum is run in reverse long enough to unwind the cable.

Working Through a Blockage

1. If cutting tool becomes lodged in blockage and drain cleaner is still operating, the cable will start to wind up or twist. If so, immediately turn off, let tension release, and then pull back on cable to free cutting tool from the drain blockage. If cable cannot be freed by pulling back, briefly turn the motor on in REV setting to free the cutting tool.

⚠WARNING

Do not keep cable rotating if cutting tool is lodged in a blockage. If cutting tool stops turning and drum keeps rotating, cable can twist, kink, break, or tangle in the drain.

2. Once cutting tool is free of blockage and is turning again, slowly feed the rotating cutting tool back into the blockage. Do not force the cutting tool through the blockage.
3. Allow the spinning and cutting to break up and work its way through the blockage.

Note:

While working through the blockage, the cutting tool and the cable can get clogged with debris and cuttings from the blockage can prevent further cleaning. The cable and the cutting tool will then need to be removed from the drain, as well as the debris. See the Retrieving Drain Cleaner Cable section.

If Cutting Tool Lodges in Drain

1. If the cutting tool stops turning and the cable cannot be pulled from the blockage, release the foot switch while holding the cable with both hands.

⚠WARNING

Do not remove your hands from the cable or it may kink, twist, and break.

2. The drain cleaner motor will stop and the cable and drum will turn backwards until tension in the cable is released.

⚠WARNING

Do not remove your hands from the cable until all the tension is released.

3. Place the rotation switch in the OFF position.

Freeing a Lodged Cutting Tool

1. Release the foot switch and turn the rotation switch to the OFF position.
2. Pull back on the cable to free it from the blockage. If the cutting tool will not come free, place the rotation switch in the REV position.

⚠WARNING

Do not operate drain cleaner in reverse for any longer than is needed to free the cutting tool from blockage (for no more than several seconds at a time).

3. Hold the cable with both gloved hands, press the foot switch for several seconds, release, and pull on the cable until it is free of the blockage.
4. Place the rotation switch in the FOR position and continue cleaning the drain.

Retrieving a Drain Cleaner Cable

1. Once the drain is clear, turn on the faucet or use a hose to flush the debris out.

Note: Pay attention to the water level. There could be blockages farther down in the drain.

⚠WARNING

Do not pull the cable from the drain while the cable is still rotating. The tail end can whip around, causing serious injury.

2. Pull the cable from the drain by hand and feed it into the drain cleaner until the cable is a couple of feet from the drain opening. A flow of water down the line will help to clean the cable as it is retrieved. (If necessary, change the cutting tool and continue cleaning.)
3. Set the rotation switch to the OFF position, dry your hands, and unplug the machine before removing the end of cable from the drain, and returning it to the drum.



Note:

The rotation switch controls the rotation of the drum only. **DO NOT USE ROTATION SWITCH IN REV POSITION WHILE REMOVING CABLE FROM PIPE.** Use reverse direction only momentarily for relieving pressure or untangling cable from a blockage. The warranty will be void if the cable is damaged from allowing motor to twist excessively against blockage, or if drum is run in reverse

long enough to unwind cable.

Power-Feed Operation (#62083)

⚠ WARNING

To prevent serious injury from twisted or broken cables, tail ends whipping around, an appliance tipping, chemical burns, infections, electric shock, and other causes, conscientiously follow the operating instructions for your product model.

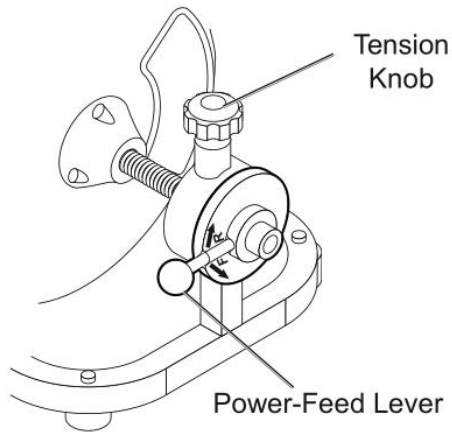
Since drains likely contain hazardous chemicals or bacteria, wear appropriate protective equipment, such as:

- ANSI-approved splash-resistant safety goggles and NIOSH-approved dust mask/respirator under face shield.
 - Latex, rubber, or other liquid barrier gloves under heavy-duty LEATHER work gloves. Do not use a glove you are not currently wearing or a rag to hold the rotating cable. Cloth materials can tangle in the rotating cable, leading to serious personal injury. Before use, inspect gloves to be sure they are free of defects or loose sections that could get caught in the drain cleaner.
 - Rubber-soled, non-slip shoes to help prevent slipping and electric shock.
1. To prevent the cable from whipping, place the drain cleaner within two feet of a drain line.
 2. Position the drain cleaner so that you can operate the foot switch while having one hand on the cable at all times. This will keep the cable from hazardously whipping when activating the drain cleaner. Also, make sure the rotation switch on top of the drain cleaner and the power-feed lever are within reach.

⚠ WARNING

Only one person should operate the cable feed and the foot switch. Do not operate the drain cleaner with one person controlling the cable and another person controlling the foot switch. This can cause the cable to kink, twist, and break, which can also lead to serious personal injury.

3. Loosen the tension knob, grab the cable with both gloved hands, and push the cable into the drain until at least one foot of cable is in the drain. Tighten the tension knob (see figure).



4. After ensuring that the rotation switch is in the FOR position, the tension knob has been tightened, and the power-feed lever is in the F (down) position, press the foot switch to start feeding the cable further into the drain.
5. If the cable becomes lodged (in a narrow part of the drain, in a drain trap, etc.), move the power-feed lever to exactly between the F and the R settings, otherwise the cable will start moving which will allow the cable to work itself past the obstruction.
6. If the cable still won't pass the obstruction, release the foot switch and use sharp downward thrusts to try and pass the obstruction. Once the cable is past, put the power-feed lever in the F (down) position, press the foot switch, and continue feeding.



Note:

The rotation switch controls the rotation of the drum only. **DO NOT USE THE ROTATION SWITCH IN THE REV POSITION WHILE REMOVING THE CABLE FROM THE PIPE.**

Only use the reverse direction momentarily for relieving pressure or untangling the cable from a blockage. The warranty will be void if the cable is damaged from allowing the motor to twist excessively against a blockage, or if the drum is run in reverse long enough to unwind the cable.

Working Through a Blockage

1. If the cutting tool becomes lodged in a blockage and the drain cleaner is still operating, the cable will start to wind up or twist. If so, release the pressure from the foot switch and the drain cleaner motor will stop.

⚠️WARNING

Wound up loose cable outside of the drain can become a hazard. The cable can whip around, causing serious injury. Do not let cable build up outside drain.

2. The cable and the drum will automatically turn backwards until the tension in the cable is released.

⚠️WARNING

Do not remove your gloved hand from the cable until all the tension is released.

3. Put the power-feed lever in the up (R) position to pull the cable back and free the cutting tool from the blockage.
4. If the motor can't pull the cable out, release the pressure from the foot switch and allow the cable to stop spinning. Once the cable has stopped spinning, grab the cable with both gloved hands and pull it free.
5. Once the tool is free of blockage and is turning again, slowly feed the rotating cutting tool back into the blockage. Do not force the tool through the blockage. Allow the cutting tool to break up and work through the blockage.

NOTE:

While working through the blockage, the cutting tool and the cable can get clogged with debris and cuttings from the blockage can prevent further cleaning. The cable and the cutting tool will then need to be removed from the drain, as well as the debris. See the Retrieving Drain Cleaner Cable section.

Retrieving drain Cleaner Cable

1. Once the drain is clear, turn on the faucet or use a hose to flush the debris out.

Note: If the water flow slows or stops, resume using the drain cleaner to locate and clear the blockage further down the drain.

2. To retrieve the cable, set the power feed lever in the reverse (up) position but make sure the rotation switch is still in the forward position.

⚠WARNING

Do not retrieve the cable with the rotation switch set in the reverse position.

3. Keep one hand on the cable because the cable can get caught while being retrieved.
4. Continue retrieving the cable until you can pull it by hand. Release the foot from the foot switch.

⚠WARNING

Do not pull the cable from the drain while it's still rotating. The cable can whip around, causing serious injury.

5. Turn the rotation switch to the OFF position, dry your hands, and unplug the machine.
6. Release the tension knob and pull the remaining cable from the drain by hand and feed it into the drain cleaner. If needed, change the cutting tool and continue cleaning.



Note:

The rotation switch controls the rotation of the drum only. **DO NOT USE THE ROTATION SWITCH IN THE REV POSITION WHILE REMOVING THE CABLE FROM THE PIPE.** Use the reverse direction only momentarily for relieving pressure or untangling the cable from a blockage. The warranty will be void if the cable is damaged from allowing the motor to twist excessively against the blockage, or if the drum is running in reverse long enough to unwind the cable.

After Each Use

⚠️WARNING

Wipe the external surfaces of the drain cleaner with a clean cloth. Store indoors out of the reach of children.

Maintenance

⚠️WARNING

Procedures not specifically explained in this manual must be performed only by a qualified technician.

Maintain the drain cleaner by adopting a program of conscientious repair and maintenance in accordance with the following recommended procedures. It is recommended that the general condition of any tool be examined before it is used. Keep your drain cleaner in good repair. Keep handles dry, clean, and free from oil and grease. The following chart is based on a normal operation schedule.

Maintenance Interval	Maintenance Point
Cleaning Drain Cleaner Cable	<ol style="list-style-type: none"> 1. Thoroughly flush the drain cleaner cable with clean water after every use. Doing so will help prevent the build-up of sediment and any drain cleaning chemicals that are still in the cable. 2. Once the cable has been flushed, carefully tip the drain cleaner forward to empty out any remaining debris. 3. Once the cable is clean and dry, pull the cable from the drum. 4. Lubricate with an oily rag as you feed the cable back into the drum. <p>WARNING! Do not attempt to remove a rotating cable.</p>
Cleaning/Lubrication	<ol style="list-style-type: none"> 1. The drain cleaner should be cleaned as needed with hot, soapy water and/or disinfectants. <p>WARNING! Risk of shock! Do not allow water to get into the motor or any other electrical components.</p> <ol style="list-style-type: none"> 2. Dry the drain cleaner before storing or using again. 3. For item #62083 (power-feed drain cleaner), hose off the power-feed assembly with clean water. 4. Once dry, thoroughly lubricate with a light-weight machine oil. 5. If the drain cleaner drum is removed or changed, grease the bearings with good, general purpose grease.

Maintenance Interval	Maintenance Point
Removing and Installing the A1118 Belt	<ol style="list-style-type: none"> 1. Loosen the belt guard retaining knob and slide the belt guard off. 2. Use the screwdriver to slide the belt off the back of the drain cleaner drum. 3. Slide the new belt onto the belt pulley above the drum. 4. Slide the new belt onto the rear of the drum until it's securely in place. 5. Slide the belt guard packs into place. Tighten the belt guard retaining knob to lock the belt guard back into place. <p>WARNING! Do not operate the drain cleaner without the belt Guard in place.</p>
Installing Replacement Cable	<ol style="list-style-type: none"> 1. Remove the old cable by pulling it completely out of the drum. Separate the cable from the drum-connecting cable. 2. Connect the new cable to the drum-connecting cable and feed it back into the drum.

Troubleshooting

⚠WARNING

If the supply cord of this appliance is damaged, it must be replaced only by a qualified service technician.

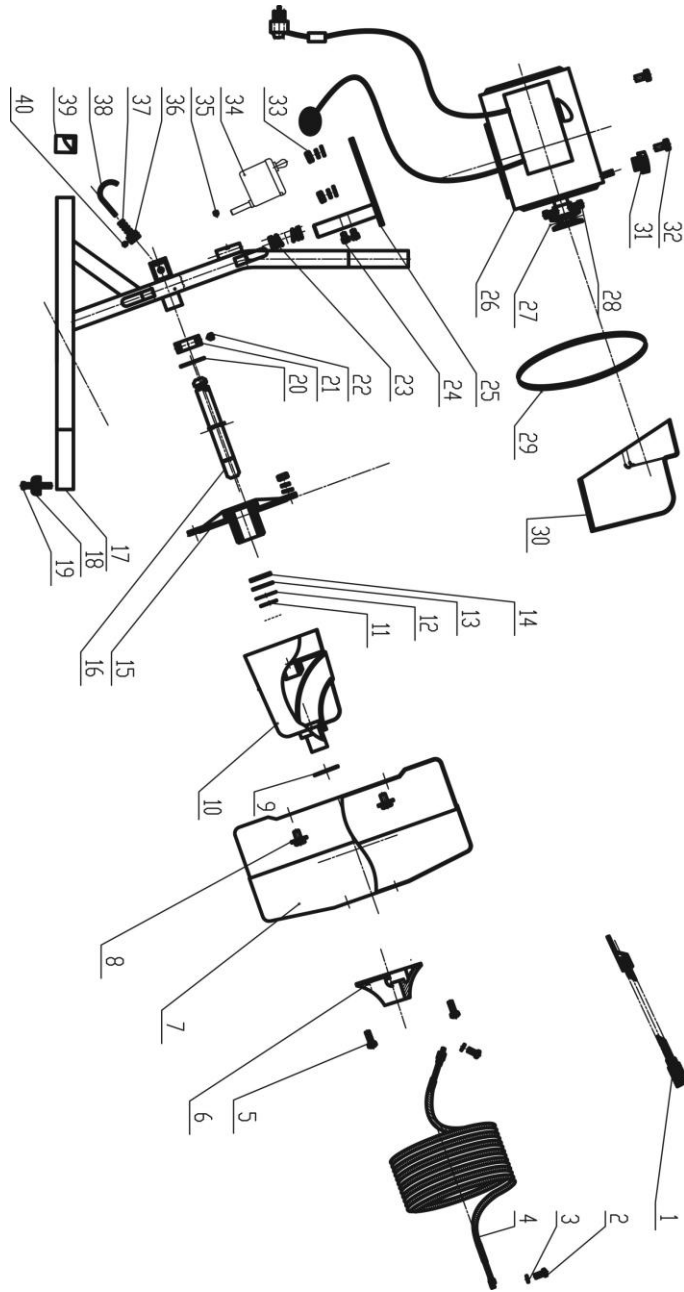
Use the table below to troubleshoot problems before contacting service personnel or your local dealer. If the problem continues after troubleshooting, call your local dealer for assistance.

Failure	Possible Cause	Corrective Action
Motor shuts off during use.	1. The motor may have been shut off by its internal thermal protection switch or by the auto reset breaker.	1. Turn the rotation switch to OFF. Allow the motor to cool off completely before restarting it. Stay clear of the cable when turning the motor back on.
	2. The GFCI breaker tripped.	2. Make sure all electrical components are dry and all insulation is in good repair. Press the reset button. If the GFCI trips again, have the appliance serviced by a qualified electrician before further use.
Cable kinks, twists, or breaks.	1. Too much force on the cable.	1. Do not force the cable. Let the cutting tool do the work.
	2. Too much slack between the drain cleaner and the drain-pipe inlet.	2. Move the drain cleaner to within two feet of the drainpipe inlet.

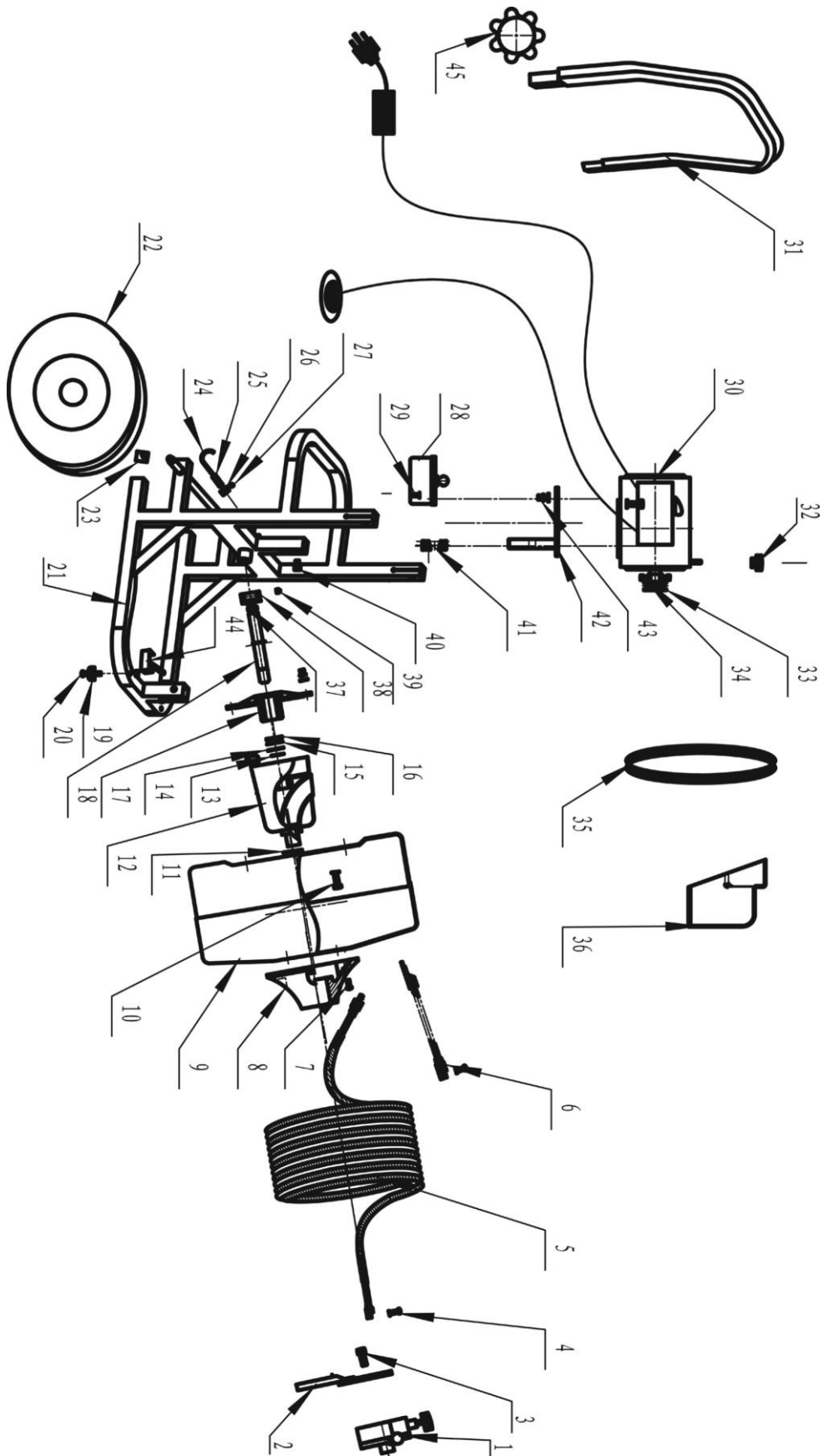
Failure	Possible Cause	Corrective Action
	3. The cable is the wrong size for the drain pipe.	3. Change the cable size.
	4. Cable was exposed to acid.	4. Clean and oil the cable regularly.
	5. Cable was exposed to acid.	5. Replace cable.
The cable tangles in the drum.	1. Too much force on the cable.	1. Do not force the cable. Let the cutting tool do the work.
	2. Motor is running in reverse.	2. Retract the cable with the rotation switch in the FOR position.
	3. The distributor tube is frozen.	3. The technician should lubricate the distributor tube bearings.
The power cord GFCI trips when the unit is plugged in or when the foot switch is pressed.	1. The motor rotation switch is defective.	1. Repair or replace the motor rotation switch.
	2. The power cord is frayed.	2. Have the power cord replaced by a qualified technician.
	3. The motor has a short circuit.	3. Have the motor repaired or replaced.
	4. Excess moisture is touching the power cord or drain cleaner.	4. Have the motor repaired or replaced.
	5. There's a faulty GFCI unit.	5. An electrician must replace the power cord with a GFCI.
The motor does not operate or the foot switch sticks.	The pneumatic foot switch may have a leak.	<p>Check for leaks in air line leading from foot switch.</p> <p>Check for tears and holes in foot switch.</p> <p>Replace if needed.</p>
The rotation switch does not work.	The centrifugal switch requires the motor to come to a complete stop before it will allow the direction of the motor to be changed.	Move the rotation switch to the OFF position and allow the motor to stop before changing from FOR to REV or vice versa.

Parts Diagram

Item #62082



Item #62083



Parts List

Item #62082

part	Description
1	Drum Connecting Cable
2	Bolt
3	Spring Washer
4	Cable
5	Bolt
6	Front Hub Bushing
7	Drum
8	Bolt
9	Fiber Washer
10	Distributor Tube/Inner Drum
11	Flat Washer
12	Rear Shaft Retaining Ring
13	Flat Washer
14	Flat Washer
15	Rear Hub
16	Drum Shaft
17	Frame
18	Rubber Foot
19	Bolt
20	Flat Washer

part	Description
21	Shaft Spacer
22	Bolt
23	Motor Support Spring
24	Bolt
25	Motor Support
26	Motor
27	V-Belt Pulley
28	Bolt
29	V-Belt (A1118)
30	Belt Guard
31	Belt Guard Knob
32	Bolt
33	Nut
34	Tool Holder
35	Bolt
36	Retaining Pin Collar & Set Screw
37	Retaining Pin Spring
38	Drum Shaft Retaining Pin
39	Rubber Leg Tip
40	Bolt

Item #62083

part	Description
1	Power-Feed
2	Front Post
3	Bolt
4	Bolt
5	Cable
6	Drum Connecting Cable
7	Bolt
8	Front Hub Bushing
9	Drum
10	Connecting Cable / Nut / Washer
11	Fiber Washer
12	Distributor Tube / Inner Drum
13	Front Shaft Retaining Ring
14	Rear Shaft Retaining Ring
15	Flat Washer
16	Flat Washer
17	Rear Hub
18	Drum Shaft
19	Rubber Foot
20	Bolt
21	Frame
22	8" Wheel
23	Rubber Leg Tip

part	Description
24	Drum Shaft Retaining Pin
25	Retaining Pin Spring
26	Retaining Pin Screw / Set Screw
27	Bolt
28	Tool Holder
29	Bolt
30	Motor
31	Handle
32	Belt Guard Knob
33	V-Belt Pulley
34	Bolt
35	V-Belt (A1118)
36	Belt Guard
37	Fiber Washer
38	Shaft Spacer
39	Screw
40	Bolt
41	Motor Support Spring
42	Motor Support
43	M8 Nut
44	M8 Bolt
45	Handle Locking Knob

Replacement Parts

- For replacement parts and technical questions, please call Customer Service at **1-800-222-5381**.
- Not all product components are available for replacement. The illustrations provided are a convenient reference to the location and position of parts in the assembly sequence.
- When ordering parts, the following information will be required: item description, item model number, item serial number/item lot date code, and the reference number.
- The distributor reserves the rights to make design changes and or improvements to product lines and manuals without notice.

Limited Warranty

Northern Tool and Equipment Company, Inc. ("We" or "Us") warrants to the original purchaser only ("You" or "Your") that the Klutch product purchased will be free from material defects in both materials and workmanship, normal wear and tear excepted, for a period of one year from date of purchase. The foregoing warranty is valid only if the installation and use of the product is strictly in accordance with product instructions. There are no other warranties, express or implied, including the warranty of merchantability or fitness for a particular purpose. If the product does not comply with this limited warranty, Your sole and exclusive remedy is that We will, at our sole option and within a commercially reasonable time, replace product components without charge to you. No returns will be accepted. This limited warranty is not transferable.

Limitations on the Warranty

This limited warranty does not cover: (a) normal wear and tear; (b) damage through abuse, neglect, misuse, or as a result of any accident or in any other manner; (c) damage from misapplication, overloading, or improper installation; (d) improper maintenance and repair; and (e) product alteration in any manner by anyone other than Us, with the sole exception of alterations made pursuant to product instructions and in a workmanlike manner.

Obligations of Purchaser

You must retain Your product purchase receipt to verify date of purchase and that You are the original purchaser. To make a warranty claim, contact Us at 1-800-222-5381, identify the product by make and model number, and follow the claim instructions that will be provided. The product and the purchase receipt must be provided to Us in order to process Your warranty claim. Any returned product that is replaced or refunded by Us becomes our property. You will be responsible for return shipping costs or costs related to Your return visit to a retail store.

Remedy Limits

Product replacement or a refund of the purchase price is Your sole remedy under this limited warranty or any other warranty related to the product. We shall not be liable for: service or labor charges or damage to Your property incurred in removing or replacing the product; any damages, including, without limitation, damages to tangible personal property or personal injury, related to Your improper use, installation, or maintenance of the product or product component; or any indirect, incidental or consequential damages of any kind for any reason.

Assumption of Risk

You acknowledge and agree that any use of the product for any purpose other than the specified use(s) stated in the product instructions is at Your own risk.

Governing Law

This limited warranty gives You specific legal rights, and You also may have other rights which vary from state to state. Some states do not allow limitations or exclusions on implied warranties or incidental or consequential damages, so the above limitations may not apply to You. This limited warranty is governed by the laws of the State of Minnesota, without regard to rules pertaining to conflicts of law. The state courts located in Dakota County, Minnesota shall have exclusive jurisdiction for any disputes relating to this warranty.

KLUTCH

Distributed by:

Northern Tool & Equipment Company, Inc.

Burnsville, Minnesota 55306

www.northerntool.com

Made in China