



KAYAK RAMP ASSEMBLY GUIDE

(using wheel kits No. 34110)

(2024 version)

Safe and ergonomic, this ramp is the ideal complement to skim over water. You will be able to enter your boat with ease without even setting foot in the water.

This guide includes instructions for assembling a kayak or canoe ramp with aluminum or wooden handrails.

To get the elements of this ramp by yourself, see the required products list below.

You can also combine the Kayak Ramp Starter Kit (No.19170), the Mooring Ramp Hardware Box (No.19164) and two Wheel Boxes (No.34110).

COMPLETE KIT No. 19290 CONTENT

4x 96" handrail lengths with 4x finishing caps and 12x stainless steel screws



#19297



Handle

19298 (pair)

4 in. wheels



16x

2x # 34110 8 / box

PVC Bumper



1x

#15040 (pair)

Inside Corners



6x

10002

Back Plates



16x

10003

Back Plates



2x

10010

Leg Holders



4x

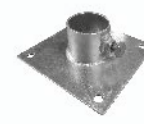
10011

Posts & PVC Caps



4x

11006 cap. # 15005



4x

11107



40x 3/8" x 2-1/2" OR 5x # 10200



100x 3/4" Treated wood screws



12x Pan head 1" stainless steel screws

Help line :
1-800-585-1237
info@multinautic.com

STRUCTURE

This booklet will guide you through the steps to complete your project.

- > First, you will assemble the basic structure.
- > Then you will install the steel hardware.
- > You will complete it with the wheels and required accessories.

It is recommended to be 2 people to assemble and install this kayak ramp. The time required is estimated at 4 hours.

TOOLS NEEDED FOR THIS PROJECT :

- > Saw
- > Tape measure
- > Pencil
- > Hammer
- > 1/4" Allen key
- > Drill with:
 - 7/16" drill bit
 - 9/16" & 3/4" Sockets or wrenches
 - Square head bit

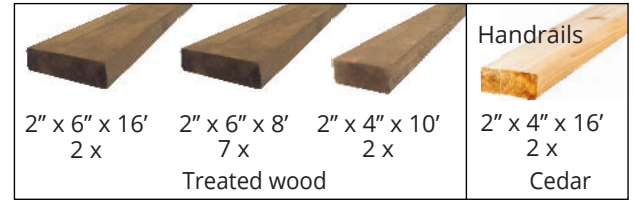
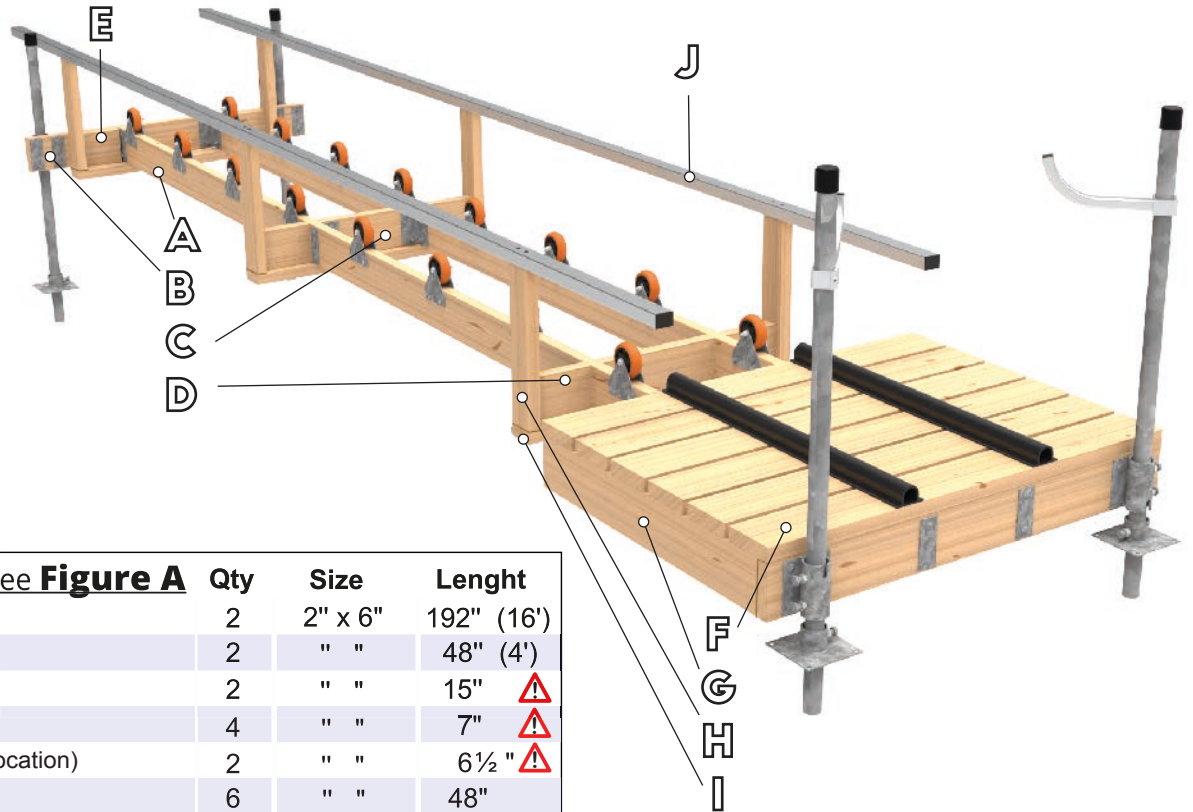


Figure A



Required Lumber - see Figure A				
	Qty	Size	Lenght	
A	2	2" x 6"	192" (16')	
B	2	" "	48" (4')	
C	2	" "	15"	⚠
D	4	" "	7"	⚠
E	2	" "	6 1/2 "	⚠
F	6	" "	48"	
G	2	" "	34 1/2"	
H	6	2" x 4"	18"	
I	3	" "	35"	
J	2	2" x 4"	192" (16')	

1 PREPARATION



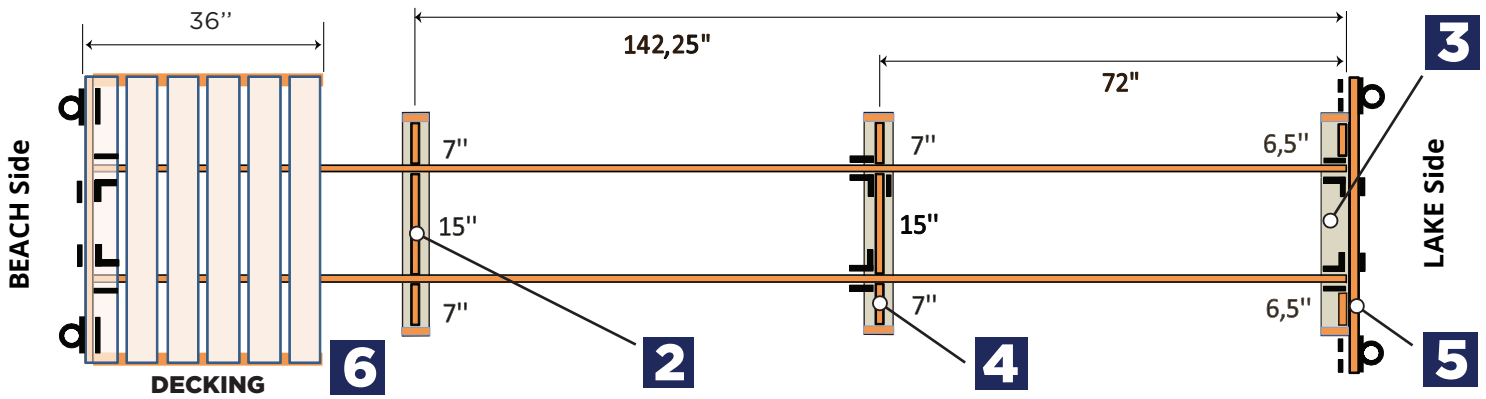
As each kayak model has its own characteristics, some preparation is necessary to adjust the ramp size to your situation. Before cutting the wood as indicated in the suggested material list, check the location of the scupper holes and the ribs under the hull if there are any. You may need to adjust the length of the Central Girts (C) and Outside ones (D & E) accordingly.

Please note that this ramp is not recommended for Kevlar kayaks.

- > To evaluate the width of your ramp, place 2 wheels under your kayak where the rolling will be done without any problem all along its length and measure the distance between the wheels. This dimension will be the same as the Central Girts length.
- > If you estimate that the Central Girts need to be extended by 2", the corresponding Outside Girts will then be shortened by 1" each : the 7" will be 6", and the 6 1/2" will become 5 1/2".



Figure B



2 MAIN BEAMS - CENTER GIRTS - END BEAMS

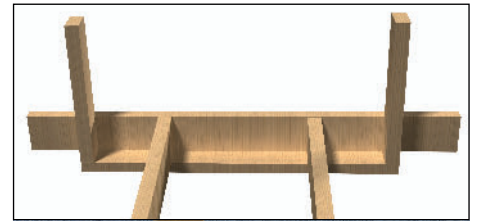
The assembly will first be done upside down. Pay attention to the positioning of the screws so that they do not interfere with the hardware bolts.

- > Assemble the Main Beams (A) and Center Girts (C) with their centers at 72" and 142 1/4" as shown in **Figure B**.
- > Add the two End Beams (B).



3 HANDRAIL BASE SUPPORTS

- > Center and screw one of the Handrail Support Bases (I) into the Beams (A) at LAKE Side.
- > Screw the other 2 Bases (I) into the Main Beams (A), making sure to align them with the middle of the Center Girts (C).



4 OUTSIDE GIRTS

- > Screw the four 7" Outside Girts (D) into these Bases (I).
- > Flip the structure right side up and add screws to these Outside Girts (D) to connect them to the Main Beams (A). To do this, install the screws at an angle.



5 HANDRAIL POSTS

- > Add the six Handrails Posts (H) with 5 screws each : 3 on the side and 2 underneath. We suggest that you pre-drill to avoid cracking.
- > Once you've finished installing the steel hardware (see next page), you'll need to consolidate the Handrail Posts (H) in the Lake Side End Beam (B) with 3 screws.
- > Then you will insert the two 6 1/2" Outside Girts (E), screwing them in the End Beam, Support and Base.

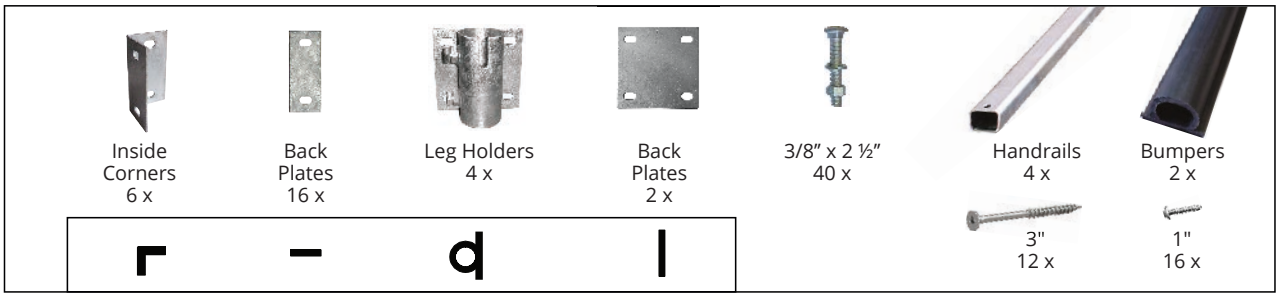


6 DECKING

- > Screw the Decking Boards (F) onto the Main Beams (A) leaving a distance of about 1/2" between them to cover 36".
- > Screw the Decking Side Boards (G) into the End Beam (B) and then screw the Decking Boards (F) into these Sides (G).



HARDWARE



1 STEEL HARDWARE

Refer to the icons in the above parts images to locate the steel hardware locations as shown in **Figure B**.

Position the Inside Corners and mark the holes with a pencil. Do the same with the Leg Holders.

2

Drill with a 7/16" drill bit as straight as possible to ease the installation of the back plates.

Install components with 3/8" x 2 1/2" bolts. Use a hammer if needed.

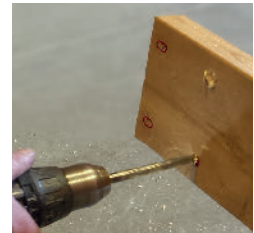
3 HANDRAILS

- > Locate the ends of the Handrails that do not have protective caps. These ends will be joined on the Center Handrail Support (H).
- > Position the Handrails on the Vertical Supports (H) with the larger holes on top.
- > Screw them securely into these Supports (H).

4 PVC BUMPERS

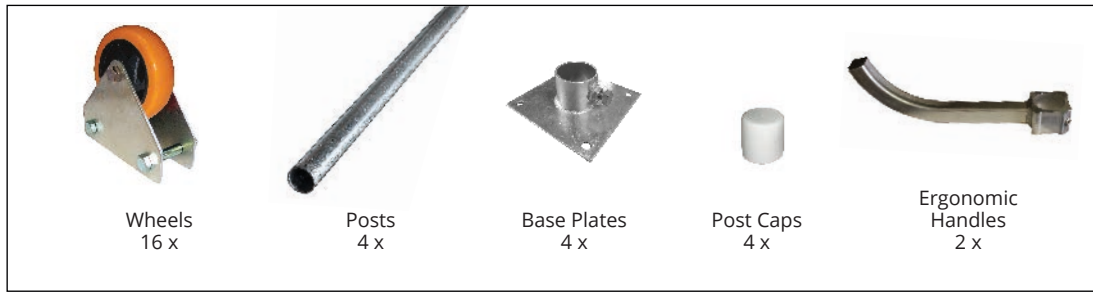
Install the bumper lengths on the platform. These will stabilize and protect your kayak.

Use 1" stainless steel screws.



Should you encounter any difficulties with this product, do not return it to the store. Please contact our customer service at **1-800-585-1237**

WHEELS & RAMP INSTALLATION



1 WHEELS INSTALLATION

Assemble the Wheels as shown with the nylon bushing, the stainless steel center axle bolt and the 2 triangular plates.



2 Mark the sides of the Main Beams (A) at the distances shown in **Figure C** with lines 2" from the top of the Beams. It is on these strokes that the plate will line up to mark the mounting holes.

3 Position the Wheels by aligning their triangular plate bases to your marks and note in pencil the location of the holes to be drilled.



Drill the holes straight. Install the Wheels and adjust the assembly.

4 RAMP INSTALLATION

> Slide the two Posts located "LAKE Side" into the Leg Holders and stabilize them temporarily, until the ramp is in the water. Securely fasten the Base Plates within +/- 6" of the ends of these Posts.



5 > Move the ramp to its final location. Once properly positioned, drive the Posts until the Base Plates are on the ground.

> Adjust the height and level of the ramp with the Leg Holder bolts.

> Add the other two Posts, Beach Side, leaving at least 30 in. sticking out. Base Plates at this end are not always required especially if the ramp is resting on the ground.

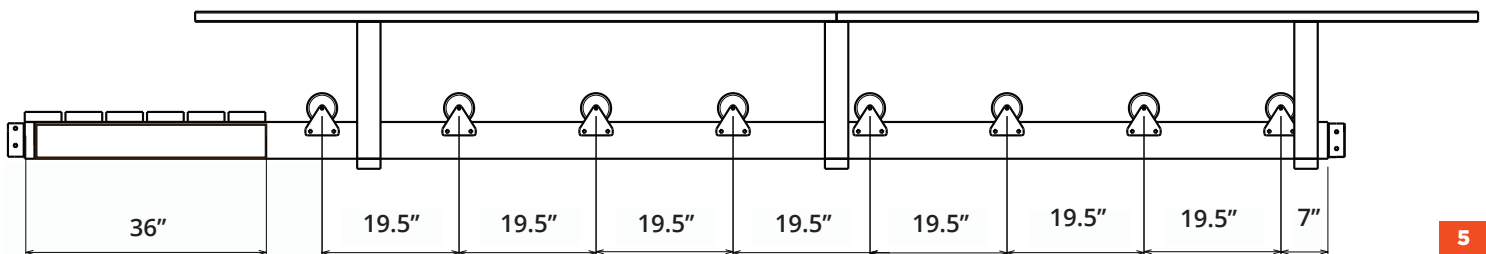
> Add the Ergonomic Handles. Adjust their height to fit your needs, tighten them then install the PVC Caps.



Note: If the ramp floats, drive the Posts deeper into the ground for a better grip. In order to prevent ice damage, it is suggested to take the ramp out of the water during winter.

Figure C

Wheel Locations



Available accessories for your Kayak Ramp :

Galvanized Steel Posts

For a higher installation of the ramp, use longer posts to fit your needs. You might also need base plates.

10009 6 ft
11005 8 ft
11010 10'6" ft

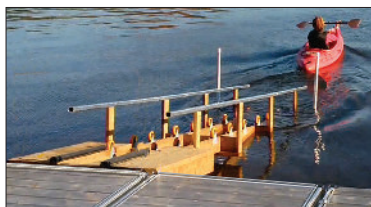
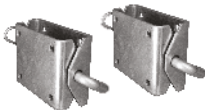
11107 Base plate 6 in. x 6 in.
11108 Base plate 6 in. x 12 in.



Dock Hinges

Use these hinges to connect your ramp to a wood dock or most aluminum dock models.

10043 (1 unit)



Wheel kit

Allows easy displacement of the ramp, in or out of the water. To be able to move the ramp forwards and backwards depending on the water level.

Kit includes :

2 black plastic wheels (24 in.)
 2 hubs (10 1/2 in.)

22000



Kayak Rack (24")

Aluminum and stainless steel. Mounting brackets are designed to fit over 1 1/2" to 2" O.D. posts. Can be installed over the decking for easy storage or outside, to free up space on the dock.

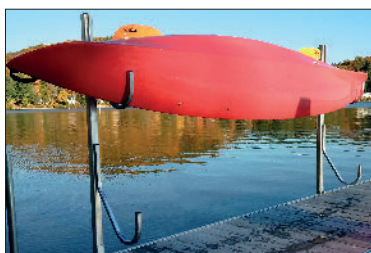
22018



Double Kayak Rack (60")

Aluminum and stainless steel. With mounting brackets that fit any type of dock, wooden or aluminum excepts QPF-303, QPF-383, QP-320 and QP-400 Multinautic docks.

22019



Paddle Board (SUP) Rack (24")

Aluminum and stainless steel. Mounting brackets are designed to fit over 1 1/2" to 2" O.D. posts. Can be installed over the decking or outside, to free up space on the dock.

22027



LIMITED WARRANTY

Multinautic® hereby warrants to the original consumer purchaser only that this product will be free, in normal use, of any defects in materials and workmanship for a period of one (1) year from the consumer's original date of purchase directly from Multinautic® or from a Multinautic® authorized reseller. At its sole option,

Multinautic® will repair or replace the defective product and promptly return it to you. In order for this warranty to be valid, the consumer must, at the time the product is returned, provide proof of purchase in the form of the original purchase receipt directly from Multinautic® or from a Multinautic®-authorized reseller. If Multinautic® elects to replace the defective product, then Multinautic® reserves the right to replace the defective product with another product of the same model or a model of at least comparable quality and features in Multinautic®'s sole determination. A reimbursement cannot exceed the amount paid by customer and is limited to the replacement of the defective product.

If you believe this product is defective within the warranty period, call Multinautic® for a Return Authorisation Number (RAN), carefully repack the unit, insure it and return it with proof of purchase, postage prepaid, to Multinautic® at 2330, Jean-Adam, St-Sauveur, QC, Canada, J0R 1R2. Write the RAN on the shipping label. Any product sent without RAN will be refused and returned freight collect to sender.

This warranty is not transferable. This warranty does not apply in cases of abuse or misuse of the product, use contrary to Multinautic®'s instructions, an act of God, negligent use, purchase from a party other than a Multinautic® authorized reseller, unauthorized repair, or modification of the product.

ALL IMPLIED WARRANTIES OF MERCHANTABILITY OR FITNESS FOR A PARTICULAR PURPOSE ARE HEREBY DISCLAIMED TO THE EXTENT PERMITTED UNDER APPLICABLE LAWS AND, TO THE EXTENT NOT PERMITTED, ARE HEREBY LIMITED TO THE DURATION AND TERMS OF THIS WARRANTY. MULTINAUTIC® ALSO HEREBY DISCLAIMS ALL LIABILITY FOR INCIDENTAL, SPECIAL, OR CONSEQUENTIAL DAMAGES.

Some states or provinces do not allow limitations on how long an implied warranty lasts, or the exclusion or limitation of incidental or consequential damages, so the above limitation may not apply to you. This warranty gives you specific legal rights, and you may have other rights which vary from state to state or province to province. This warranty does not restrict the rights of the consumer mandated under applicable laws. THIS WARRANTY SUPERSEDES ALL OTHER WARRANTIES THAT ARE ASSOCIATED WITH THIS PRODUCT.



1-800-585-1237

Multinautic, property of
 Multi Online Distribution Inc.
 2330, Jean-Adam, St-Sauveur, QC,
 Canada, J0R 1R2
www.multinautic.com
info@multinautic.com

