



Hand Winch Stacker

Owner's Manual



⚠ WARNING: Read carefully and understand all ASSEMBLY AND OPERATION INSTRUCTIONS before operating. Failure to follow the safety rules and other basic safety precautions may result in serious personal injury.

Item #61134

READ & SAVE THESE INSTRUCTIONS

Thank you very much for choosing a Strongway™ product!

For future reference, please complete the owner's record below:

Serial Number/Lot Date Code: _____

Purchase Date: _____

Save the receipt, warranty, and this manual. It is important that you read the entire manual to become familiar with this product before you begin using it.

This hand winch stacker is designed for certain applications only. Northern Tool and Equipment is not responsible for issues arising from modification or improper use of this product such as an application for which it was not designed. We strongly recommend that this product not be modified and/or used for any application other than that for which it was designed.

For technical questions, please call **1-800-222-5381**.

Table of Contents

Intended Use.....4

Packaging Contents.....4

Technical Specifications4

Important Safety Information4

Specific Operation Warnings6

Main Parts of Stacker.....8

Assembly Instructions.....9

Before Each Use.....14

Operating Instructions.....15

Maintenance18

Troubleshooting.....18

Parts Diagram19

Parts List20

Replacement Parts21

Limited Warranty22

Intended Use

The Strongway Hand Winch Stacker is used to lift materials to and from shelves, move office equipment, and install ceiling and wall appliances on level surfaces, including workshops, warehouses, stockrooms, and receiving areas.

The stacker is perfect when aisles and congested areas prevent the use of larger equipment. It rolls through standard doorways in the upright position.

The unit is constructed of durable steel with a lightweight aluminum frame. Forks can be inverted to provide two different lift heights. The stacker is operated by a hand-crank winch. The unit is lightweight and portable, as upper handle rollers allow the truck to be loaded onto its back for easy van or pick-up transporting.

Packaging Contents

- Main Assembly
- Forks (2)
- Standard Support Legs (2)
- Fork Retaining Pins (4)
- Winch Handle
- Owner's Manual

Technical Specifications

Property	Specification
Load Capacity (lb.)	500
Fork Length (in.)	22 1/2
Overall Dimensions L x W x H (in.)	34 29/64 x 24 x 67
Platform Size L x W (in.)	34 7/8 x 24 13/16
Front Wheel Size (in.)	2.5
Rear Wheel Size (in.)	8
Lowered Height (in.)	3-17/32
Raised Height (in.)	71
Outside Fork Width (in.)	24
Fork Width (in.)	20-7/8

Important Safety Information

⚠WARNING

- Read and understand all instructions. Failure to follow all instructions may result in serious injury or property damage.
- The warnings, cautions, and instructions in this manual cannot cover all possible conditions or situations that could occur. Exercise common sense and caution when using this tool. Always be aware of the environment and ensure that the tool is used in a safe and responsible manner.
- Do not allow persons to operate or assemble the product until they have read this manual and have developed a thorough understanding of how it works.
- Do not modify this product in any way. Unauthorized modification may impair the function and/or safety and could affect the life of the product. There are specific applications for which the product was designed.

- Use the right tool for the job. DO NOT attempt to force small equipment to do the work of larger industrial equipment. There are certain applications for which this equipment was designed. This product will be safer and do a better job at the capacity for which it was intended. DO NOT use this equipment for a purpose for which it was not intended.
- Industrial or commercial applications must follow OSHA requirements.

⚠WARNING

WORK AREA SAFETY

- Inspect the work area before each use. Keep work area clean, dry, free of clutter, and well-lit. Cluttered, wet, or dark work areas can result in injury. Using the product in confined work areas may put you dangerously close to cutting tools and rotating parts.
- Do not use the product where there is a risk of causing a fire or an explosion; e.g., in the presence of flammable liquids, gases, or dust. The product can create sparks, which may ignite the flammable liquids, gases, or dust.
- Do not allow the product to come into contact with an electrical source. The tool is not insulated and contact will cause electrical shock.
- Keep children and bystanders away from the work area while operating the tool. Do not allow children to handle the product.
- Be aware of all power lines, electrical circuits, water pipes, and other mechanical hazards in your work area. Some of these hazards may be hidden from your view and may cause personal injury and/or property damage if contacted.

⚠WARNING

PERSONAL SAFETY

- Stay alert, watch what you are doing, and use common sense when operating the tool. Do not use the tool while you are tired or under the influence of drugs, alcohol, or medication. A moment of inattention while operating the tool may result in serious personal injury.
- Dress properly. Do not wear loose clothing, dangling objects, or jewelry. Keep your hair, clothing and gloves away from moving parts. Loose clothes, jewelry, or long hair can be caught in moving parts. Air vents on the tool often cover moving parts and should be avoided.
- Wear the proper personal protective equipment when necessary. Use ANSI Z87.1 compliant safety goggles (not safety glasses) with side shields, or when needed, a face shield. Use a dust mask in dusty work conditions. Also use non-skid safety shoes, hardhat, gloves, dust collection systems, and hearing protection when appropriate. This applies to all persons in the work area.
- Do not overreach. Keep proper footing and balance at all times.
- Secure the work with clamps or a vise instead of your hand when practical. This safety precaution allows for proper tool operation using both hands.

⚠CAUTION

STACKER USE AND CARE

- Do not force the stacker. Products are safer and do a better job when used in the manner for which they are designed. Plan your work, and use the correct product for the job.
- Check for damaged parts before each use. Carefully check that the product will operate properly and perform its intended function. Replace damaged or worn parts immediately. Never operate the product with a damaged part.
- Store the stacker when it is not in use. Store it in a dry, secure place out of the reach of children. Inspect the tool for good working condition prior to storage and before re-use.
- Use only accessories that are recommended by the manufacturer for use with your product. Accessories that may be suitable for one product may create a risk of injury when used with another tool. Never use an accessory that has a lower operating speed or operating pressure than the tool itself.
- Keep guards in place and in working order. Never operate the product without the guards in place.

Specific Operation Warnings

⚠WARNING

- Do not exceed the rated load capacity of 500lbs.
- Do not use to transport people or animals.
- Do not stand under or allow personnel under the load.
- Do not lower the load unless the area below is clear of personnel and obstructions.
- Before moving the load, assure that the load is centered and secured with a load restraining device.
- Check work area for overhead obstructions or other possible hazards.
- Do not use a machine with a worn, frayed, kinked or damaged cable.
- Do not use a damaged or malfunctioning machine.
- Do not use a machine with less than 4 wraps of cable on the winch drum when the carriage is fully lowered.

FALL HAZARD

- Do not use as a personnel lifting platform or step.
- Do not stand or sit on forks, load platform, or boom.
- Do not climb on machine.

TIP-OVER HAZARD

- Do not raise load unless leg lock pins have been properly inserted into legs.
- Do not raise load unless the correct length legs are properly installed.
- Do not operate machine unless wheel/leg/caster configuration is properly installed.

- Use only on a hard, level surface.
- Do not transport loads while the platform is in the raised position.
- Do not tilt machine back with a raised load.
- Avoid debris and uneven surfaces while moving a machine.
- Do not use the machine on a moving or mobile surface, or vehicle.
- Do not cause a horizontal force or side load to the machine by raising or lowering a fixed or overhanging load.
- Do not cause a horizontal force or side load to the machine.

BODILY INJURY HAZARD

- Do not grasp the cable.
- Keep hands and fingers away from pulleys, the carriage and other potential pinch points.
- Do not place arms, hands, or fingers through the frame.
- Keep hands and feet clear of the platform when lowering the load.

ELECTRIC SHOCK HAZARD

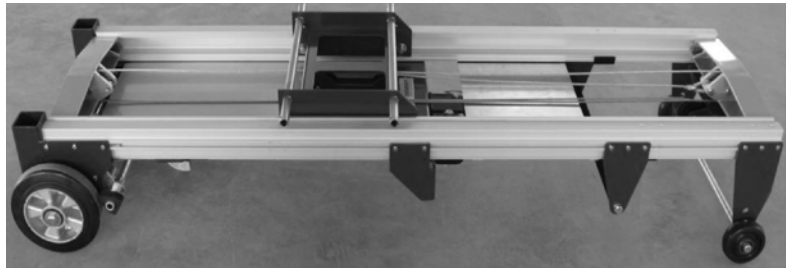
- This machine is not electrically insulated and will not provide protection from contact.
- Maintain safe distances away from electrical power lines and apparatus in accordance with applicable governmental regulations and table A.
- Allow for mast movement and electrical line sway or sag, and be aware of strong or gusty winds.
- Keep away from the machine if it contacts energized power lines. Personnel must not touch or operate machine until power lines are shut off.
- Do not use the machine as a ground for welding.

**FAILURE TO HEED THESE WARNINGS MAY RESULT IN PERSONAL INJURY AND/OR
PROPERTY DAMAGE.**

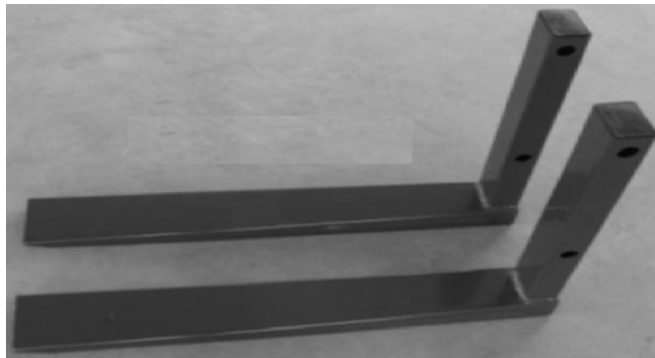
Main Parts of Stacker

Subassembly	
Part A	Main Assembly
Part B	Forks
Part C	Standard Support Legs
Part D	Fork Retaining Pins
Part E	Winch Handle

Part A - Main Assembly:



Part B - Fork:



Part C, D, & E - Standard Support Legs, Fork Retaining Pins, and Winch Handle:



Assembly Instructions

A. Connect the Support Legs to the Main Assembly

1. Insert a support leg into each of the openings in the main assembly (Fig. 1).



Fig. 1

2. One at a time, pull the retaining pegs to allow the legs to slide further into the openings (Fig. 2).

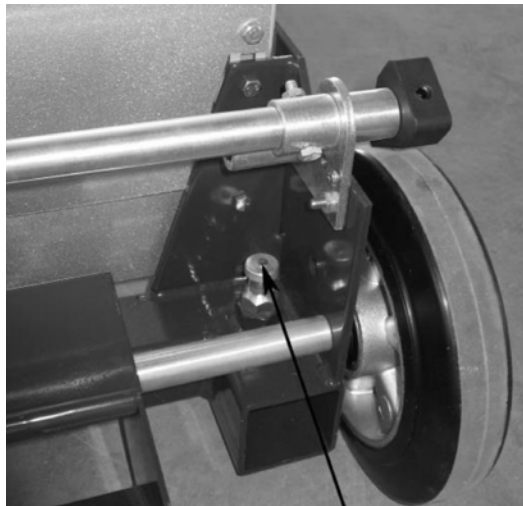


Fig. 2

3. Slowly release the pegs. You may have to wiggle the leg to get the peg to drop.
4. Pull upwards on each of the support legs to ensure that they are held in place by the pegs. The legs should not be able to slide out of the opening. If a leg comes out of the opening, the corresponding peg did not engage properly.

5. Lift the assembly to the upright position (Fig. 3).



Fig. 3

6. Lock the brakes by pressing down on the brake actuator (Fig. 4).

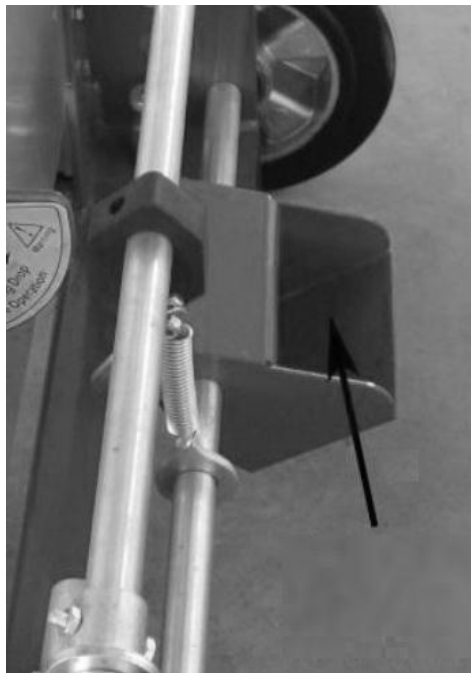


Fig. 4

B. Assemble the Handle

1. Remove the handle retaining bolt and washer (Fig. 5).

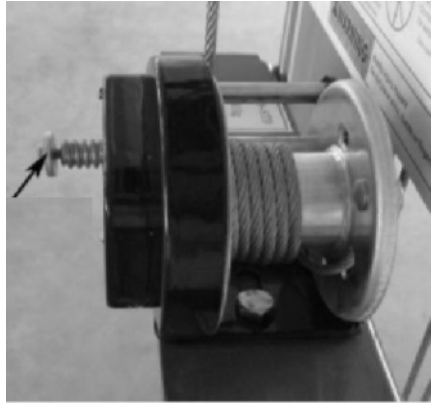


Fig. 5

2. Winch the body with the bolt and washer removed on the handle connector (Fig. 6).

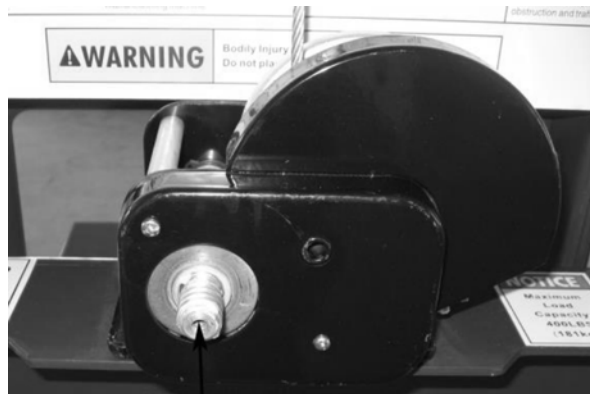


Fig. 6

3. Slide the handle onto the handle connector (Fig. 7).



Fig. 7

4. Set the handle latch pin in to lock the handle (Fig. 8, right arrow).
5. Fasten the handle to the handle connector with the bolt and washer that you removed earlier (Fig. 8, left arrow).



Fig. 8

Note: It may be necessary to secure the washer against the bolt head before you fasten the bolt to the connector. This technique will prevent the bolt from loosening when the handle is rotated counter-clockwise to lower the forks (Fig. 9).



Fig. 9

C. Attach the Forks to the Carriage

1. Grasp the operator handle with one hand and turn the winch handle clockwise with the other hand. Raise the carriage to a comfortable work height (Fig. 10).

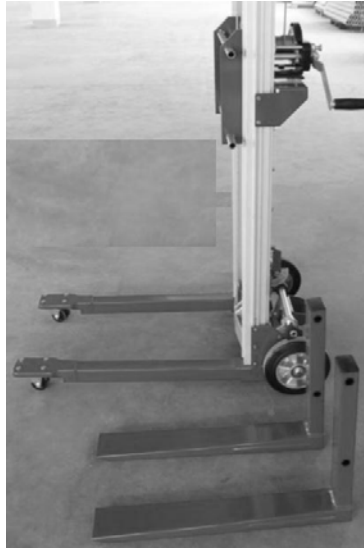


Fig. 10

2. Align the holes in the forks with the carriage crossbars, and then push the forks until they contact the carriage (Fig. 11).

Note: It may be necessary to tap the forks into place with a rubber mallet.



Fig. 11

3. Slide fork retaining pins through the holes in each of the carriage crossbars (Fig. 12).

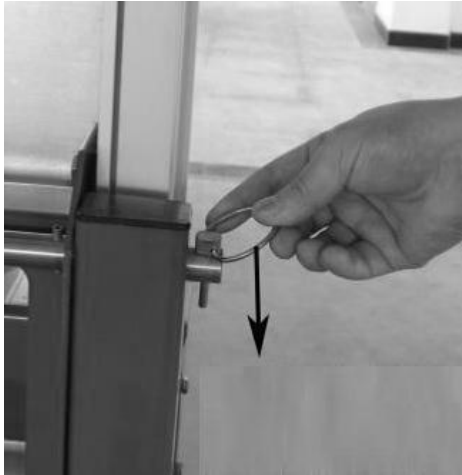


Fig. 12

4. Lock the pins into place by swinging the ring portion of each pin downward (Fig. 13).



Fig. 13

5. Turn the winch handle counter-clockwise to lower the forks. Lower the forks until they are a few inches above the support legs, and then push the stacker to the desired location.

Before Each Use

Performing the Function Test

Select a test area that is firm, level and free of obstructions.

1. Set-up

- a) Tilt the machine back.
- b) Slide each fork onto the carriage and secure with a fork lock pin.
- c) Slide each leg into a base socket until the leg lock pin snaps into the leg.
- d) Stand the machine up.

- e) Remove the winch handle, reverse the handle, and install it. The handle grip should face the operator.
- f) Straddle base: Adjust to the desired width. Be sure the leg lock pin snaps into the leg.
- g) Rotate the hold-down bar of the carriage.

2. Loading the Platform

- a) Lay the load platform onto the forks.
- b) Lift the front of the load platform and push it toward the carriage until the back angle is under the lower fork mounting tube.
- c) Rotate the load platform down until it locks into place over the forks.

3. Testing the Brake Operation (if equipped)

- a) Press down on the foot pedal to lock the brake.
- b) Push the machine.

Result: The wheels should not roll.

- a) Pull up on the foot pedal to release the brake.
- b) Push the machine.

Result: The machine should move.

Operating Instructions

WARNING

- Do not exceed the rated load capacity of 500lbs.
- Do not use to transport people or animals.
- Do not stand under or allow personnel under the load.
- Do not lower the load unless the area below is clear of personnel and obstructions.
- Check work area for overhead obstructions or other possible hazards.
- Do not use a machine with a worn, frayed, kinked or damaged cable.
- Do not use a damaged or malfunctioning machine.
- Do not use a machine with less than 4 wraps of cable on the winch drum when the carriage is fully lowered.

FALL HAZARD

- Do not use as a personnel lifting platform or step.
- Do not stand or sit on forks, load platform, or boom.
- Do not climb on machine.

TIP-OVER HAZARD

- Do not raise load unless leg lock pins have been properly inserted into legs.
- Do not raise load unless the correct length legs are properly installed.
- Do not operate machine unless wheel/leg/caster configuration is properly installed.
- Use only on a hard, level surface.
- Do not transport loads while the platform is in the raised position.
- Do not tilt machine back with a raised load.
- Avoid debris and uneven surfaces while moving a machine.
- Do not use the machine on a moving or mobile surface, or vehicle.
- Do not cause a horizontal force or side load to the machine by raising or lowering a fixed or overhanging load.
- Do not cause a horizontal force or side load to the machine.

BODILY INJURY HAZARD

- Do not grasp the cable.
- Keep hands and fingers away from pulleys, the carriage and other potential pinch points.
- Do not place arms, hands, or fingers through the frame.
- Keep hands and feet clear of the platform when lowering the load.

ELECTRIC SHOCK HAZARD

- This machine is not electrically insulated and will not provide protection from contact.
- Maintain safe distances away from electrical power lines and apparatus in accordance with applicable governmental regulations and table A below.
- Allow for mast movement and electrical line sway or sag, and be aware of strong or gusty winds.
- Keep away from the machine if it contacts energized power lines. Personnel must not touch or operate machine until power lines are shut off.
- Do not use the machine as a ground for welding.

FAILURE TO HEED THESE WARNINGS MAY RESULT IN PERSONAL INJURY AND/OR PROPERTY DAMAGE.

Table A Minimum Clearance Distances

Voltage (nominal, kV, alternating current)	Minimum Clearance Distance (feet)
up to 50	10
over 50 to 200	15
over 200 to 350	20
over 350 to 500	25
over 500 to 750	35
over 750 to 1,000	45
over 1,000	(as established by the utility owner/operator or registered professional engineer who is a qualified person with respect to electrical power transmission and distribution).

Note: The value that follows "to" is up to and includes that value. For example, over 50 to 200 means up to and including 200kV.

[29 CFR 1926.1408(h)]

Raising and Lowering Load

1. Center the load on the forks or load platform.
2. Raise the load by firmly grasping the winch handle and rotating it clockwise. Do not allow the cable to wind unevenly onto the winch drum.
3. Lower the load by firmly grasping the winch handle and rotating it counter-clockwise. After lowering to the desired position, turn the winch handle clockwise (raise the load) ¼ turn to set the brake.

Maintenance

Maintain the stacker by adopting a program of conscientious repair and maintenance in accordance with the following recommended procedures. It is recommended that the general condition of any tool be examined before it is used. Keep your tool in good repair. Keep handles dry, clean, and free from oil and grease. The following chart is based on a normal operation schedule.

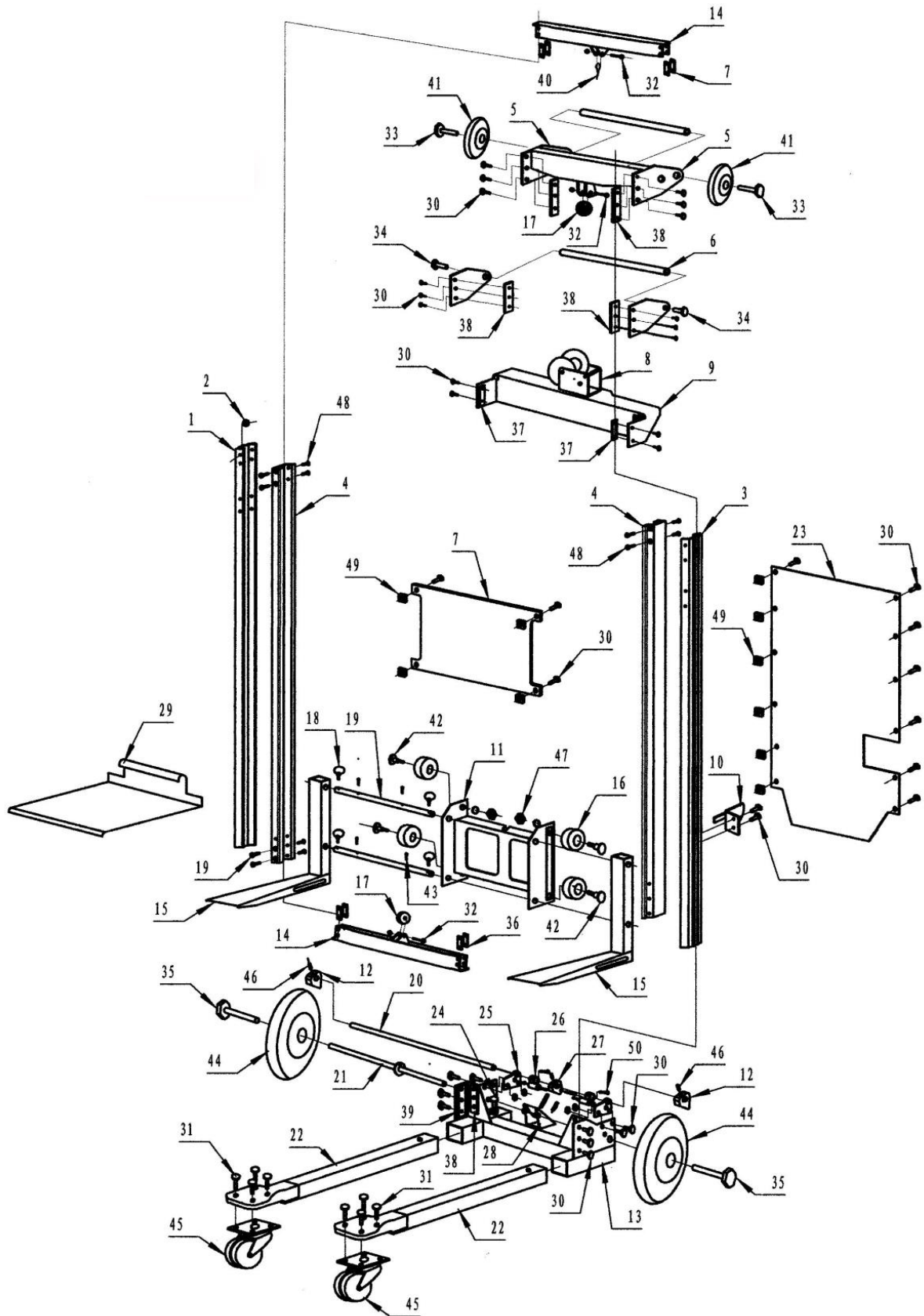
Maintenance Interval	Maintenance Point
Daily before operating	<p>To prepare the stacker for storage, remove the forks and legs and reverse the winch handle.</p> <p>Select a safe storage location. It should have a firm, level surface, be weather protected, and clear of obstructions and traffic.</p> <p>Keep the stacker clean.</p>

Troubleshooting

Use the following table to troubleshoot problems before contacting service personnel or your local dealer. If the problem continues after troubleshooting, call your local dealer for assistance.

Failure	Possible Cause	Corrective Action
The wheel will not move.	A wheel is broken or stuck.	Clean the wheels. Remove any obstructions in the wheels. Replace damaged wheels.
The fork will not rise.	The stacker is overloaded or the winch is stuck.	Remove any obstructions. Check and clean the winch.

Parts Diagram



Parts List

Part Number	Part Description	Quantity
1	Left Mast Frame	1
2	Gasket	30
3	Right Mast Frame	1
4	Inner Frame	2
5	Up Support Frame Assembly	1
6	Operator Handle	1
7	Decal Plate	1
8	Manual Winch	1
9	Winch Mounting Support Bracket	1
10	Limit Position Assembly	1
11	Carriage	1
12	Brake Block	2
13	Base Assembly	1
14	Beam	2
15	Fork	2
16	Roller Wheel	4
17	Upper and Lower Pulley	4
18	Fork Lock Pin	4
19	Carriage Crossbars	2
20	Brake Shaft	1
21	Pedal Shaft Assembly	1
22	Standard Support Legs	2
23	Baffle Plate	1
24	Spacer Pin	2
25	Brake Shaft Support Plate	2
26	Brake Locating Assembly	2
27	Brake Adjustment Block	1
28	Pedal Assembly	1
29	Deck Platform (option)	1
30	Hexagon Headed Bolt M6x12	38
31	Hexagon Headed Bolt M8x25	8
32	Hexagon Headed Bolt M10x60	5
33	Hexagon Headed Bolt M12x70	2
34	Hexagon Headed Bolt M12x25	2
35	Hexagon Headed Bolt M14x90	2
36	Fastness Plate (short)	8
37	Fastness Plate	2
38	Fastness Plate (long)	6
39	Elongated Fastness Plate	2
40	Cable Ring	1
41	Loading Wheel - 4"	2
42	Roll Wheel Central Spindle	4
43	Spring Pin	4
44	Pneumatic Wheel - 8"	2
45	Caster - 2"	2
46	Holding Screw M8x12	2
47	Hexagon Nut M10	4
48	Flat Head Screw M6x20	16
49	Square Nut M6	16
50	Hexagon Headed Bolt M6x35	2

Replacement Parts

- For replacement parts and technical questions, please call Customer Service at **1-800-222-5381**.
- Not all product components are available for replacement. The illustrations provided are a convenient reference to the location and position of parts in the assembly sequence.
- When ordering parts, the following information will be required: item description, item model number, item serial number/item lot date code, and the replacement part reference number.
- The distributor reserves the rights to make design changes and improvements to product lines and manuals without notice.

Limited Warranty

Northern Tool and Equipment Company, Inc. ("We" or "Us") warrants to the original purchaser only ("You" or "Your") that the Strongway product purchased will be free from material defects in both materials and workmanship, normal wear and tear excepted, for a period of one year from date of purchase. The foregoing warranty is valid only if the installation and use of the product is strictly in accordance with product instructions. There are no other warranties, express or implied, including the warranty of merchantability or fitness for a particular purpose. If the product does not comply with this limited warranty, Your sole and exclusive remedy is that We will, at our sole option and within a commercially reasonable time, either replace the product or product component without charge to You or refund the purchase price (less shipping). This limited warranty is not transferable.

Limitations on the Warranty

This limited warranty does not cover: (a) normal wear and tear; (b) damage through abuse, neglect, misuse, or as a result of any accident or in any other manner; (c) damage from misapplication, overloading, or improper installation; (d) improper maintenance and repair; and (e) product alteration in any manner by anyone other than Us, with the sole exception of alterations made pursuant to product instructions and in a workmanlike manner.

Obligations of Purchaser

You must retain Your product purchase receipt to verify date of purchase and that You are the original purchaser. To make a warranty claim, contact Us at 1-800-222-5381, identify the product by make and model number, and follow the claim instructions that will be provided. The product and the purchase receipt must be provided to Us in order to process Your warranty claim. Any returned product that is replaced or refunded by Us becomes our property. You will be responsible for return shipping costs or costs related to Your return visit to a retail store.

Remedy Limits

Product replacement or a refund of the purchase price is Your sole remedy under this limited warranty or any other warranty related to the product. We shall not be liable for: service or labor charges or damage to Your property incurred in removing or replacing the product; any damages, including, without limitation, damages to tangible personal property or personal injury, related to Your improper use, installation, or maintenance of the product or product component; or any indirect, incidental or consequential damages of any kind for any reason.

Assumption of Risk

You acknowledge and agree that any use of the product for any purpose other than the specified use(s) stated in the product instructions is at Your own risk.

Governing Law

This limited warranty gives You specific legal rights, and You also may have other rights which vary from state to state. Some states do not allow limitations or exclusions on implied warranties or incidental or consequential damages, so the above limitations may not apply to You. This limited warranty is governed by the laws of the State of Minnesota, without regard to rules pertaining to conflicts of law. The state courts located in Dakota County, Minnesota shall have exclusive jurisdiction for any disputes relating to this warranty.



Distributed by:

Northern Tool & Equipment Company, Inc.

Burnsville, Minnesota 55306

www.northerntool.com

Made in China