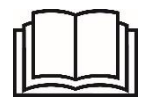


**OPERATION, PARTS, AND SERVICE MANUAL****MIXZR****WARNING**

READ AND UNDERSTAND THIS OPERATOR'S MANUAL COMPLETELY BEFORE USING THIS MIXER. ASSEMBLE, TEST AND USE ONLY IN ACCORDANCE WITH THE OPERATOR'S MANUAL INSTRUCTIONS.



**CONTENTS****PAGE**

1.	SAFETY	3
1.1	UNDERSTANDING YOUR MIXZR	5
1.2	SAFETY PICTOGRAMS USED ON YOUR EQUIPMENT	5
1.3	SAFETY DECALS	6
2.	DESCRIPTION	7
3.	TECHNICAL DATA	8
4.	PREPARING THE MIXZR FOR USE	9
5.	STARTING THE MIXZR	14
6.	STOPPING THE MIXZR	14
7.	GETTING THE BEST MIX FROM YOUR MIXZR	14
8.	CLEANING YOUR MIXZR	15
9.	REPLACING YOUR MIXZR DRUM	15
10.	ROUTINE MAINTENANCE	16
11.	ENVIRONMENT	17
12.	PARTS LIST	18
	MIXZR FRAME, MOTOR AND WHEELS	18
	MIXZR FRAME AND COVER	19
	MIXZR FRAME AND DRUM	20
	MIXZR STAND ASSEMBLY	21
15.	WARRANTY	22

## 1. SAFETY

Read these operating and safety instructions before using the machine and operate the machine in accordance with these instructions.

### **Before Mixing:**

- **Always** inspect the machine for damage or improper function.
- **Always** ensure that all fastenings are present and tight before operating the machine.
- **Always** ensure the machine is located on level and stable ground when setting up.
- **Always** ensure Guards are correctly fitted before starting the mixer.
- **Always** ensure the Drum is properly mounted to the Gearbox Drive Shaft.
- **Always ensure** that any cables are in good condition and are free from cuts, damaged wires, or broken connectors.
- **Always** ensure that all cables and cords are clear of the rotating Drum.
- **Always** ensure that trailing cables are protected from damage, and they **do not** present a tripping hazard.
- **Always ensure** that electrical cables are suited to the required power carrying capacity.
- **Always ensure the Drum Locking Spanner is not located on the Gearbox Drive Shaft before starting the machine.**
- Before use, visually examine the machine for cracks and other damage. **Do not** use if damage is suspected.
- Before starting the machine **ensure** the Drum is clear of the ground.

### **During Mixing:**

- **Always** read the Operators Manual for guidance on how to use the machine.
- **Always** wear ear protection.
- **Always** wear eye protection.
- **Always** wear protective footwear.
- **Always** ensure the work area is well illuminated.
- **Always** comply with site safety regulations.
- **Always** ensure that all personnel are clear of the Drum when starting the machine.
- Press the stop button to stop the machine. After the machine has stopped, remove the plug from the power supply.
- This machine is to be used **only** for mixing of concrete and mortars.
- **Do not** move the machine around the site with the Drum rotating.
- **Do not** operate in an explosive atmosphere.
- **Do not** reach into the Drum while the machine is rotating, there is danger of entrapment and serious injury.
- **Do not** wear loose clothing around the rotating elements of the machine; there is danger of entrapment and serious injury.
- This machine **must not** be modified in any way without written permission of the manufacturer. Unauthorized modifications are likely to invalidate the warranty and also result in the machine not conforming to safety regulations.
- **Do not** attempt to carry out any maintenance while the machine is running.

### **After Mixing:**

- **Always** ensure that the motor is switched off and the machine is unplugged from the main power supply before carrying out any routine service, maintenance or repairs.
- **Always** ensure that the Drum is thoroughly cleaned after use with water and gravel.

## 1. SAFETY (cont.)

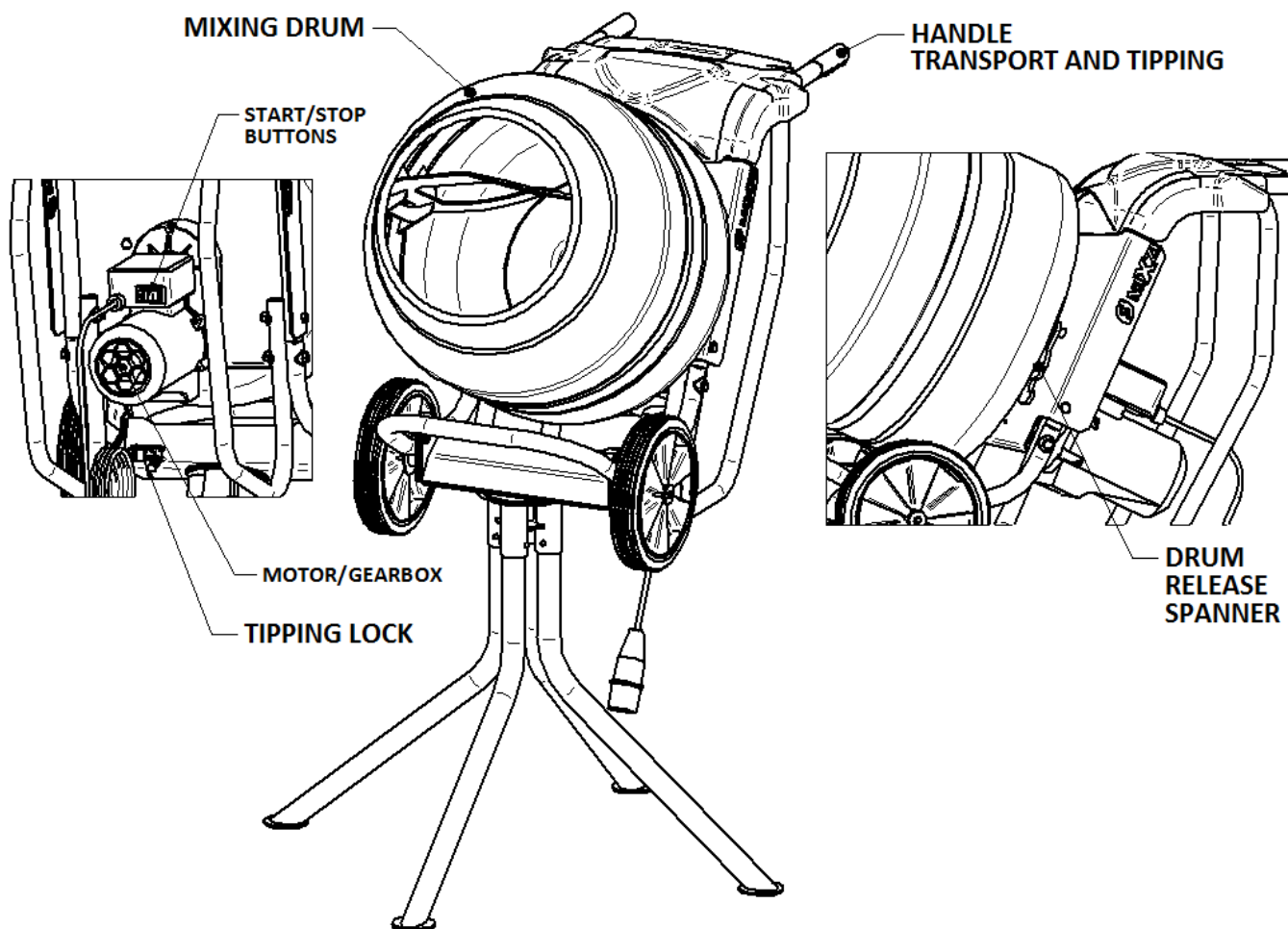
Electrical appliances are dangerous if misused. This Mixer is designed to operate on one voltage only. Check the Motor Rating Plate to ensure that it corresponds to the power supply that is intended to be connected to the Mixer.

- **Always** use a circuit protected by a Ground Fault Circuit Interrupter. (“GFCI”).
- The cord between the Mixer and power supply is supplied at a length of 10 ft. (3 meters).
- The GFCI should be plugged directly into the 120v main supply and if an extension cord is being used it should be plugged directly into the GFCI.
- When using a 120V portable power source or generator, it **must have** a minimum continuously rated output of 2.5kw and should be used in conjunction with a GFCI plugged directly into the 120V main supply.

### **Important advice when using Extension Cords**

- **Always ensure** that any extension cords are in good condition and are free from cuts, damaged wires or broken connectors.
- **Always ensure** that trailing extension cords are protected from damage and they **do not** present a tripping hazard.
- **Always ensure** that extension cords are protected from damage from sharp objects, are clear of any liquids and that they are away from the possibility of being driven over.
- **Always ensure** that cords are tied up around the Mixer to avoid being trapped in the Drum.
- **Always ensure** that extension cords are no longer than 100 feet (30 meters) in length.
- **Always ensure** that electrical cords are suited to the required power carrying capacity. Selection of the correct wire section is important to prevent overheating of the cable and possible fire.
- The extension cord should be at least 12 gauge.

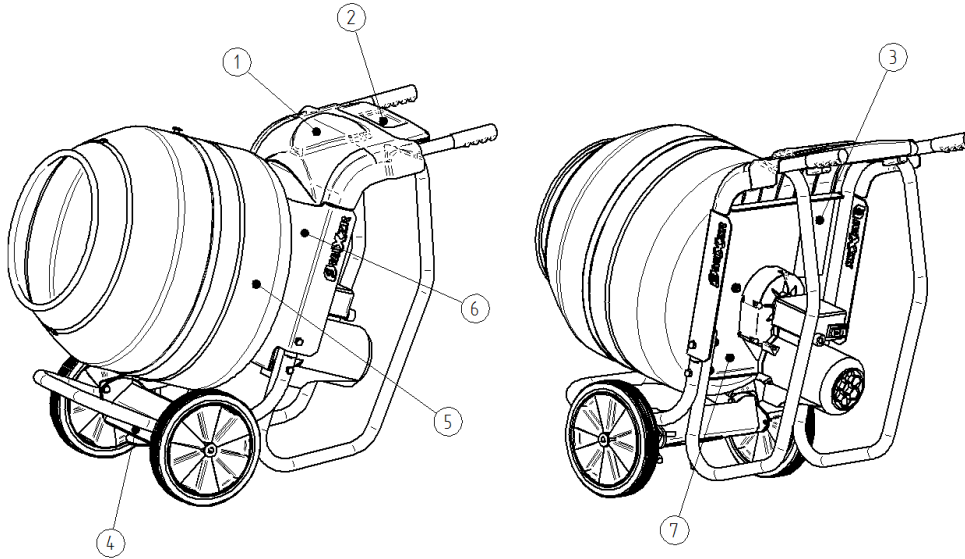
## 1.1 UNDERSTANDING YOUR MIXZR



## 1.2 SAFETY PICTOGRAMS USED ON YOUR MIXZR



## 1.3 SAFETY DECALS



Ref #	Description	Qty
1	Cover Decal	1
2	Instruction Decal	1
3	Safety Decal	1
4	Brave Pro Decal	1
5	Drum Decal	1
6	Drum Lock Decal	1
7	Serial No. Tag	1



### 1. Cover Decal



### 2. Instructional Decal

### SAFE MIXING

#### Check List

- Check Mixzr has no damaged, loose or missing parts.
- Check Mixzr is located on level, stable ground before starting.
- Check cables are damage free, suitable for the current and positioned safely.
- Check before starting the Drum Lock Spanner is not engaged and Drum is clear to spin freely.



Check all operators understand the full guidance and safety instructions given in the operators manual.

#### Do's and Donts

- Wear Personal Protective Equipment as required for the Mixzr and for general site safety.



- Do not reach into or allow tools (e.g. shovel, bucket) to enter drum while the machine is rotating.
- Always add most of required water first, then add the aggregates and cement as the machine is rotating.
- Tip and discharge the mixed material slowly, ensure good footing and tight grip of the handles as the machine may jerk during discharge.
- Don't transport around the site when plugged in.
- Clean the inside of the drum with water and gravel immediately after use.



### 3. Safety Decal

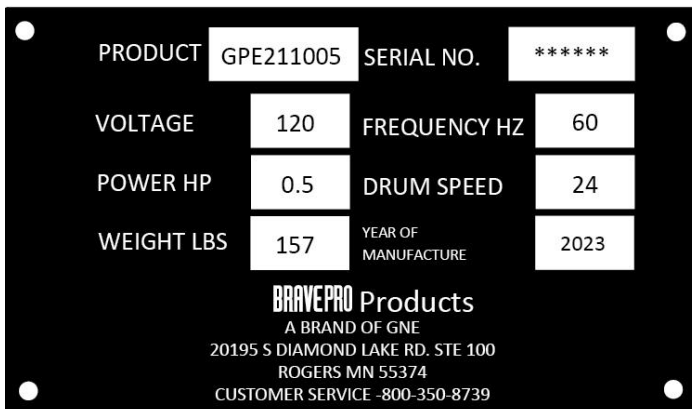
### 1.3 SAFETY DECALS (cont.)



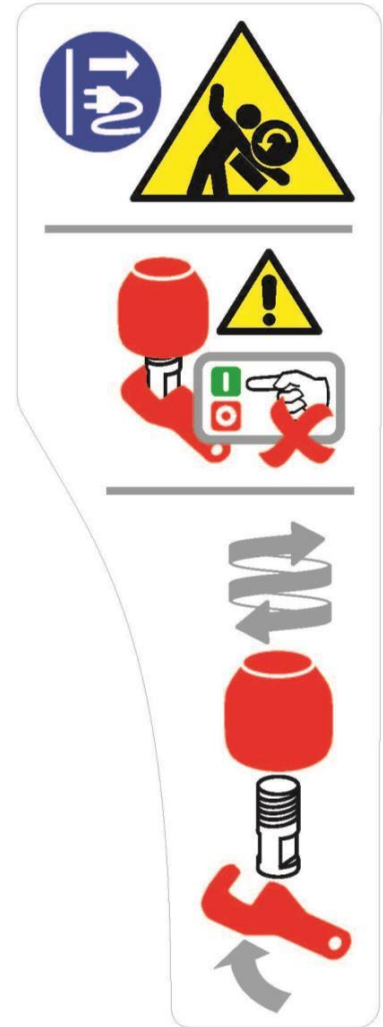
4. BravePro Decal



5. Drum Decal



7. Serial Tag



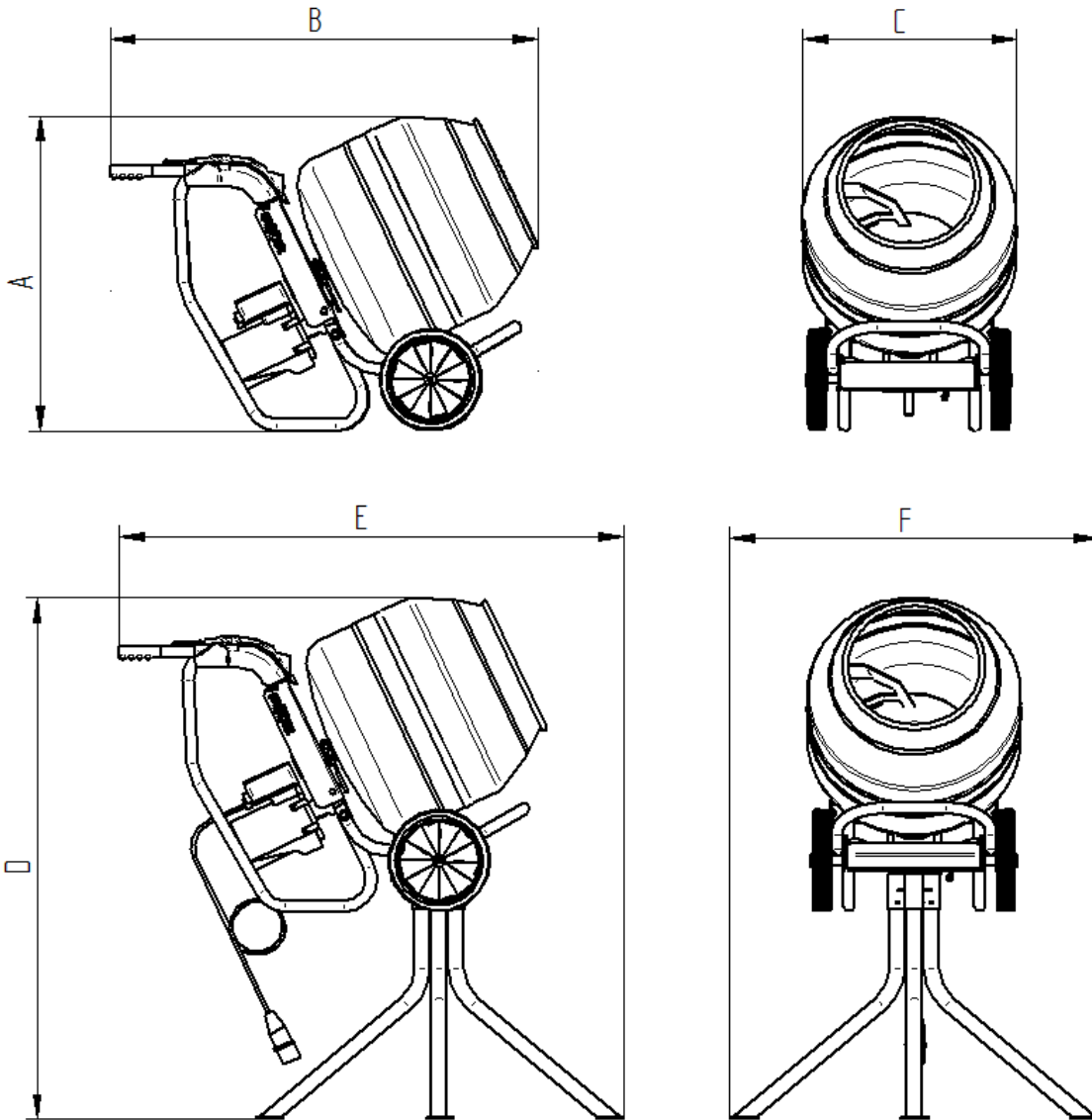
6. Drum Lock Decal

## 2. DESCRIPTION

The MIXZR is designed for the mixing of concrete and mortar for a variety of building applications. The MIXZR has a mixing capacity of 24 gallons (90 liters) and can be used with its wheels at ground level or mounted on a Stand for convenient discharge into a wheelbarrow. The MIXZR is supplied as a simple self-assembly kit ready to use.

### 3. TECHNICAL DATA

#### DIMENSIONS



Height – A (off Stand)	34.8 in
Length – B (off Stand)	47.4 in
Width – C (off Stand)	23.7 in
Height – D (on Stand)	57.8 in
Length – E (on Stand)	55.8 in
Width – F (on Stand)	40.8 in

### 3. TECHNICAL DATA (cont.)

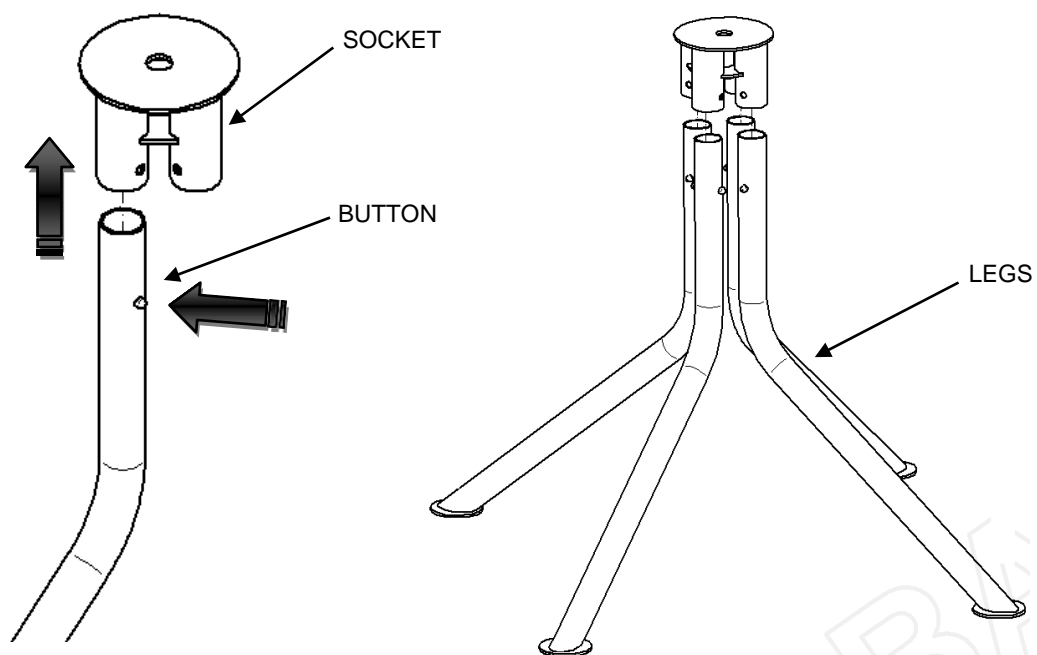
#### NOISE EMISSIONS

The Guaranteed Sound Power level (LWA) tested according to ISO3744 and the Machinery Directive is 79.8 dB(A).

### 4. PREPARING THE MIXZR FOR USE

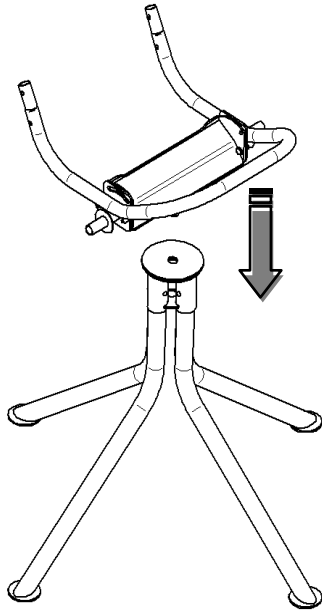
Upon receipt and before use, the machine will need to be assembled. Please follow the assembly instructions carefully:

#### Assembling the Stand

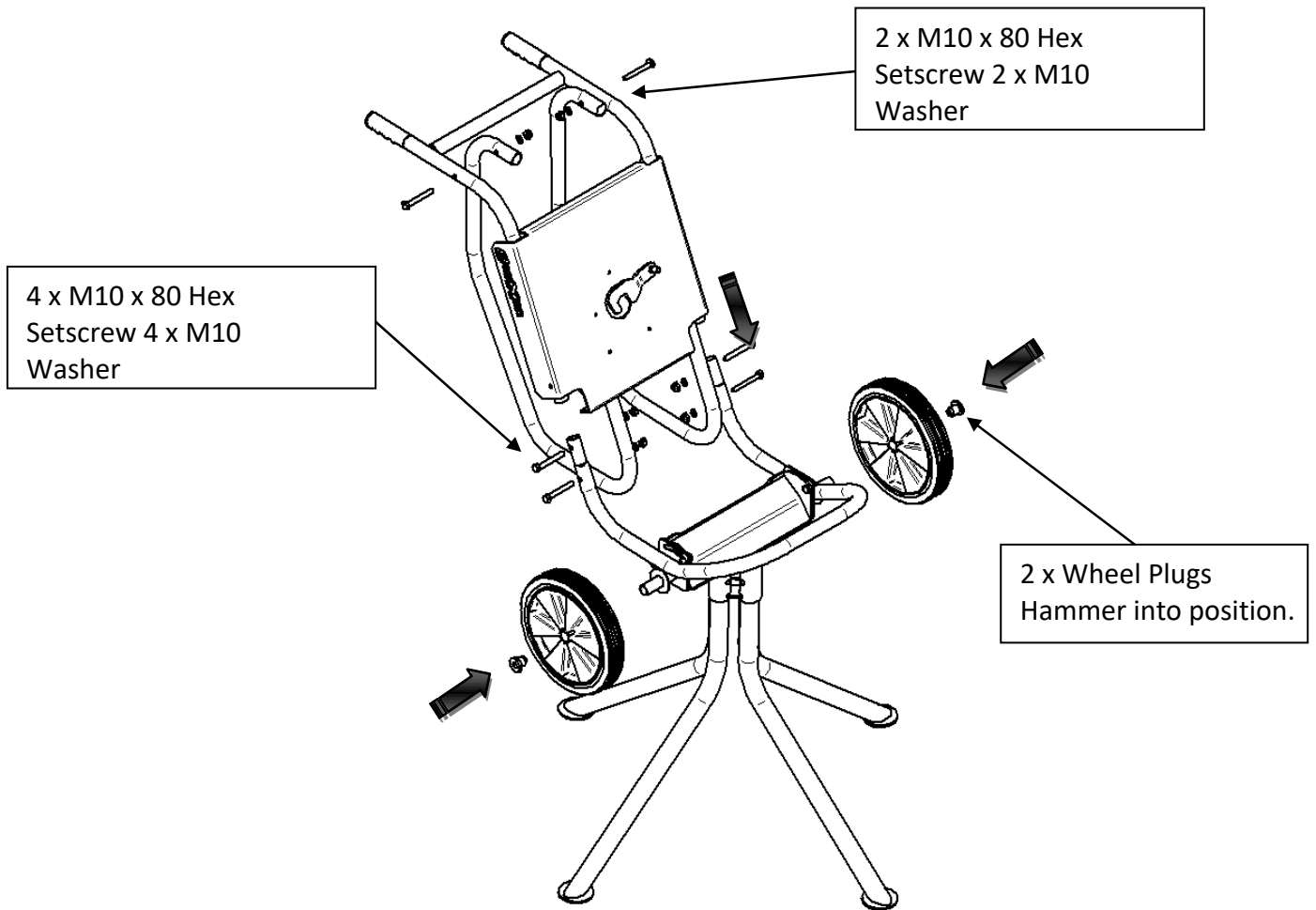


## 4. PREPARING THE MIXZR FOR USE (cont.)

### Assembling the Lower Frame

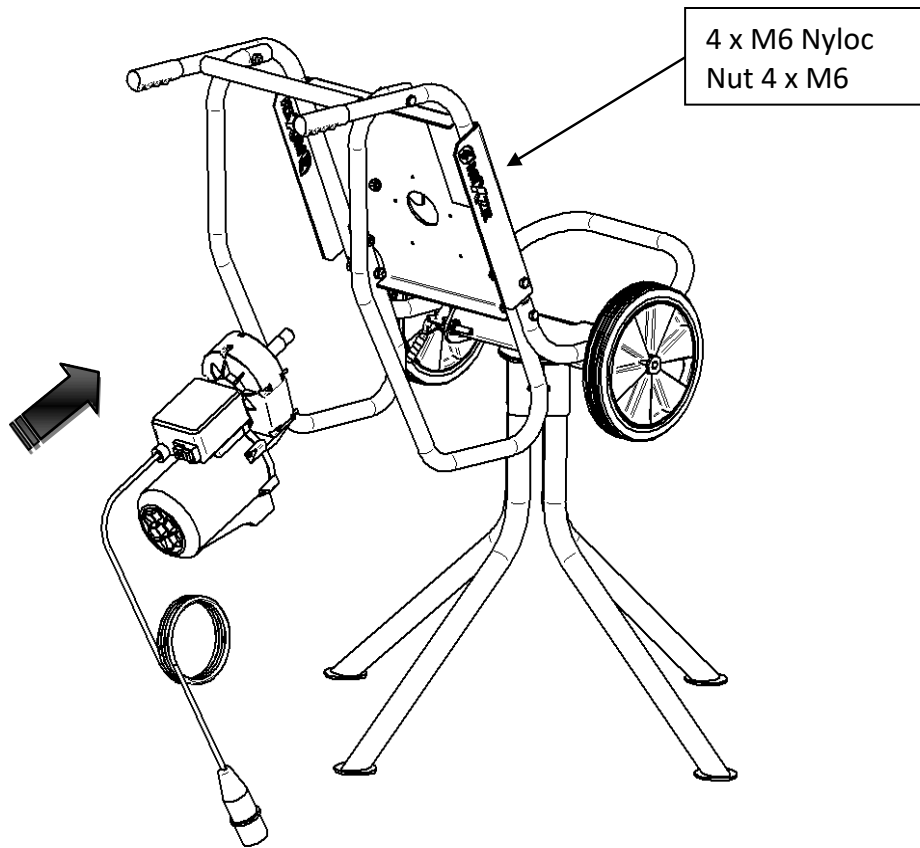


### Assembling the Upper Frame

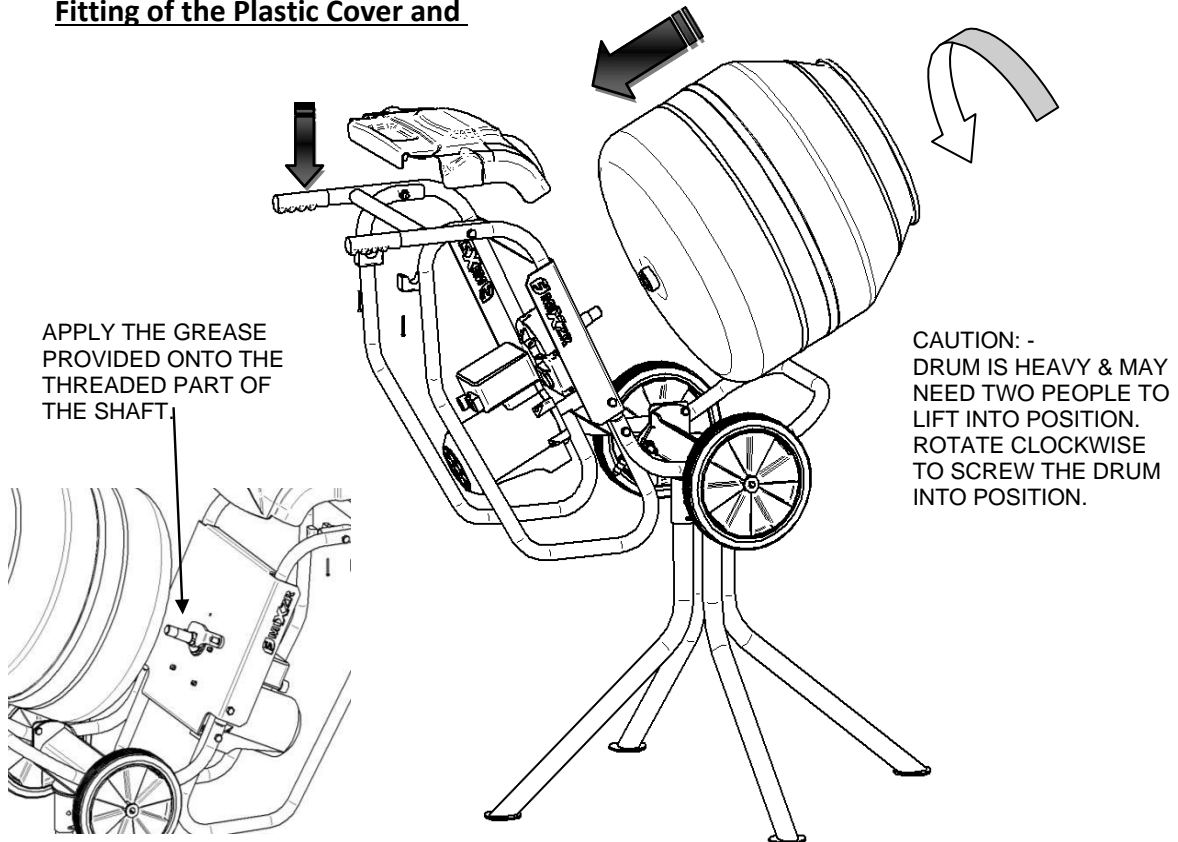


## 4. PREPARING THE MIXZR FOR USE (cont.)

### Assembling the Motor/ Gearbox



### Fitting of the Plastic Cover and

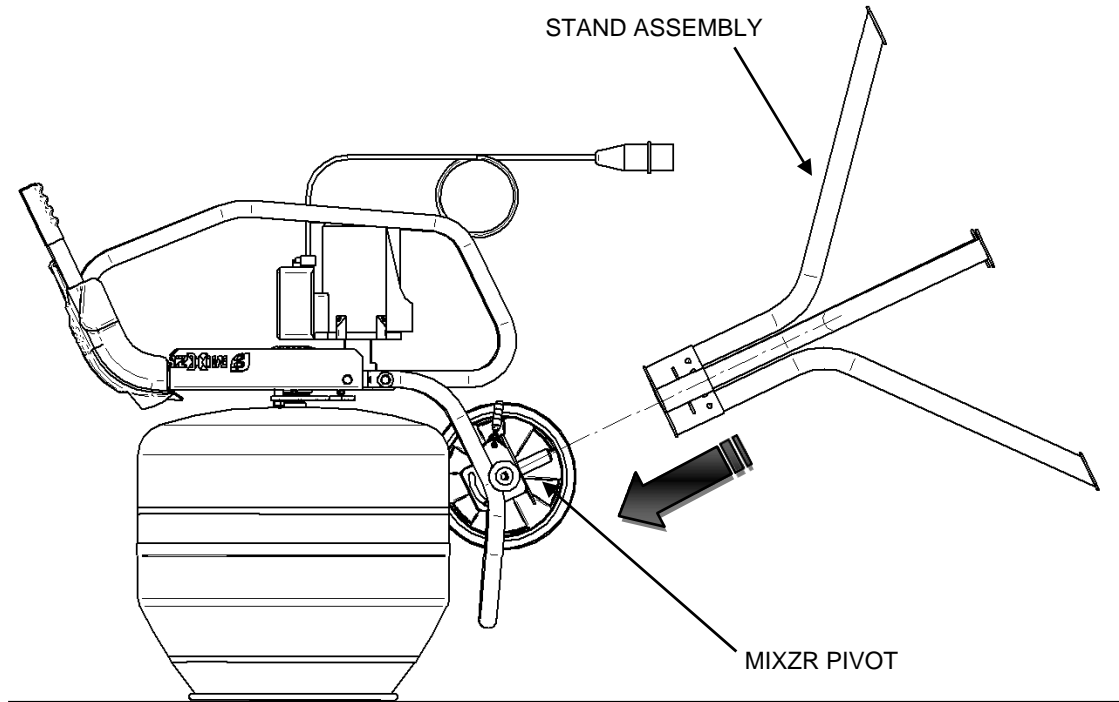


## 4. PREPARING THE MIXZR FOR USE (cont.)

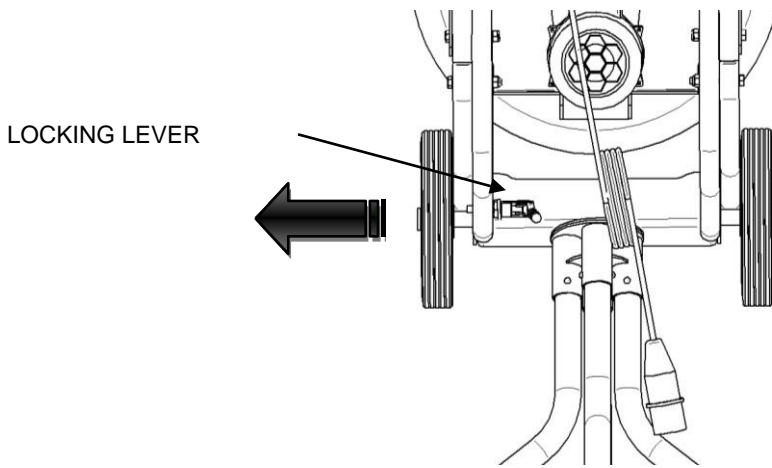
### Assembling the Stand to the MIXZR

If the MIXZR has been assembled without the stand and you wish to affix the stand to the Mixzr, please follow the instructions below.

1. Tip the MIXZR so that it sits on the face of the drum as shown below.

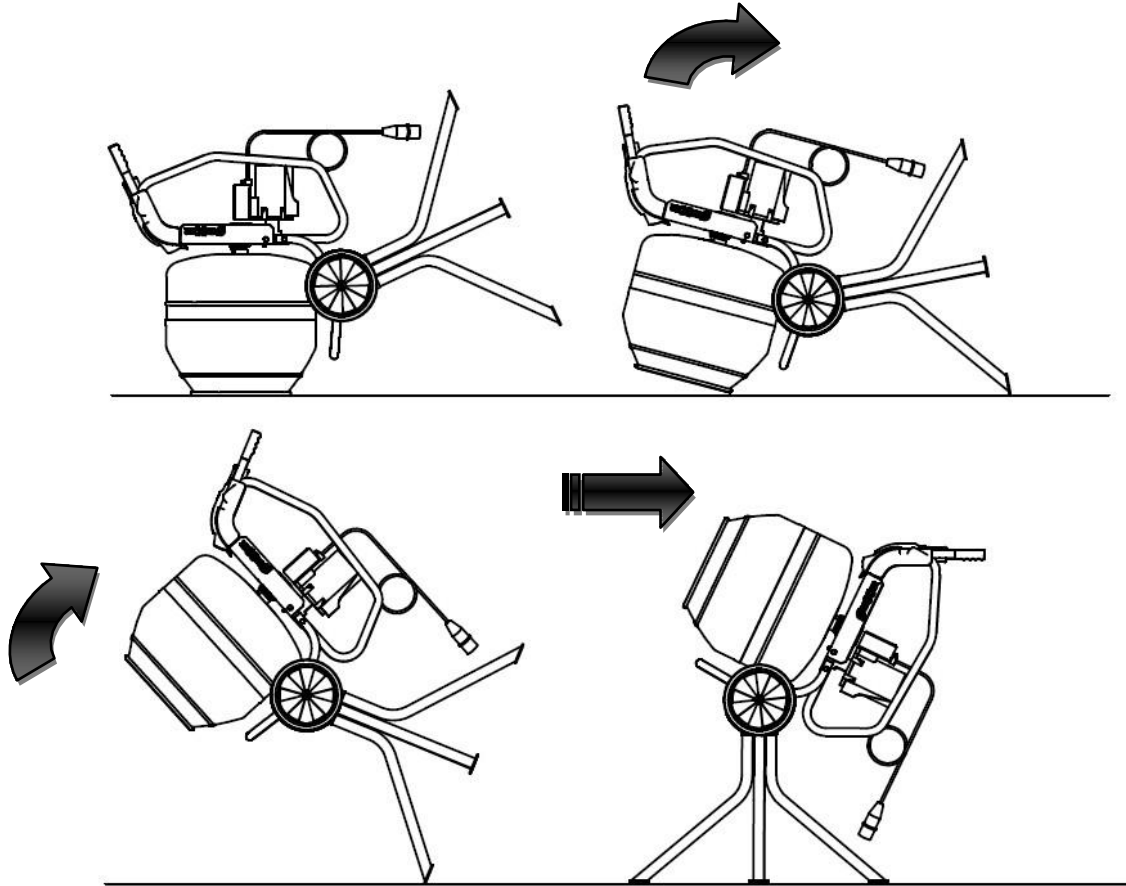


2. Ensure that the Locking Lever is positioned as shown above (to the left and with the bolt through the brackets). This will make moving the MIXZR to its upright position easier and safer.

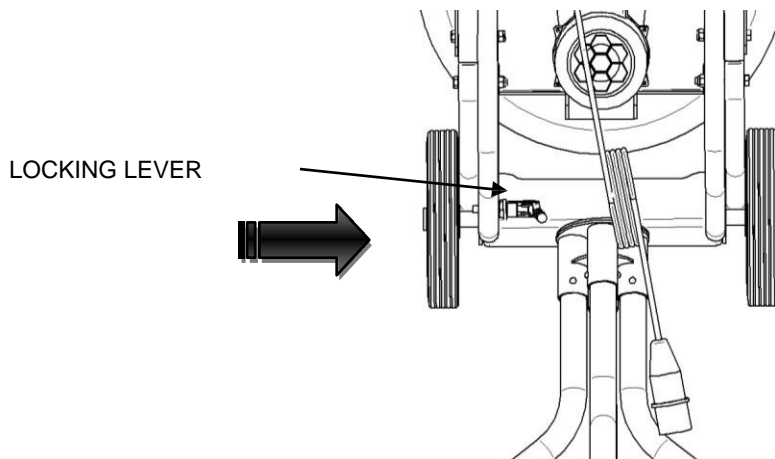


## 4. PREPARING THE MIXZR FOR USE (cont.)

### Moving the MIXZR to the Upright Position



1. With the MIXZR sitting on its Drum Face, gently transfer the weight of the MIXZR to the Stand Legs as shown above.
2. Lifting from the Drum rim, gradually move the MIXZR to the upright position as shown above.
3. At this stage the Tilt Locking Lever can be positioned as shown above (to the right and with the bolt out of the brackets). This will allow tilting of the MIXZR after mixing.



## 4. PREPARING THE MIXZR FOR USE (cont.)

### Notes for Dismantling the MIXZR after use

When dismantling the MIXZR, please follow the reverse operation to that shown above for Assembly.

**Always ensure** that the MIXZR is disconnected from the main power supply and **NOT** rotating.

## 5. STARTING THE MIXZR

In accordance with international standards the ON/OFF switch is Red = OFF and Green = ON

1. **Check** that the MIXZR has no damaged, loose or missing parts.
2. **Check** that the MIXZR is on level, stable ground before starting.
3. **Check** that cables are damage free, positioned correctly and suitable for the operating current.
4. **Check that the Drum Locking Spanner is not engaged, and the Drum can rotate freely.**
5. Press the ON (Green) Button to start the MIXZR.

## 6. STOPPING THE MIXZR

In accordance with international standards the ON/OFF switch is Red = OFF and Green = ON

1. **To stop the MIXZR in an emergency press the Off (Red) button on the Electric Motor or disconnect the MIXZR from the mains supply.**
2. To stop the Drum from rotating press the Off (Red) button on the Electric Motor.

## 7. GETTING THE BEST MIX FROM YOUR MIXZR

**The following mixing ratios are offered as guidance only.**

Add water to produce a consistency that pours easily.

To mix a full wheelbarrow load, approx. 21 gallons (80 liters), of concrete:

(1 part cement: 2 parts sand: 4 parts aggregate) or mortar (1 part cement: 6 parts sand)

1. Use a 3-gallon builder's bucket to accurately measure materials added.
2. Switch on the MIXZR and add materials with the drum rotating.
3. Add approx. 5 quarts of water. (7 quarts may be needed in total. The final 2 quarts added to adjust the final consistency)
4. Add two parts of sand and wait for the slurry to mix.
5. Add cement (note: one x 55 lb. (25 kg) bag equals approx. 3 gallons (by volume)) and wait for slurry to mix.

## 7. GETTING THE BEST MIX FROM YOUR MIXZR (cont.)

6. Add the 4 more parts of sand (mortar) or 4 parts aggregate (concrete mix) and allow to mix for around 1 minute and judge consistency.
7. Add more water as required to get the mix to your preferred workable consistency.
8. Do not over mix, separation of the mixture may occur if the MIXZR is left running.
9. Discharge the mix into a wheelbarrow slowly with the MIXZR rotating.

## 8. CLEANING YOUR MIXZR

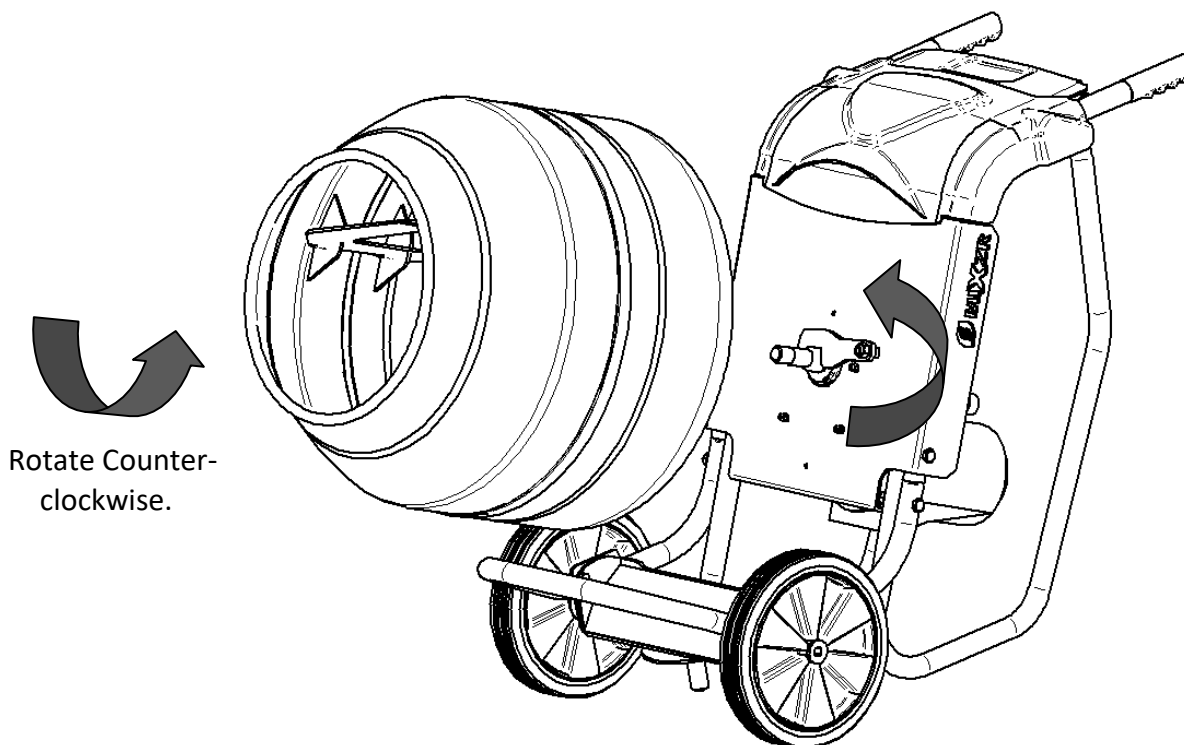
It is important to clean your MIXZR Drum after use. Failure to do so will mean that layers of mix will accumulate on the inside of the Drum to the point that the Drum will not mix effectively and become useless.

After mixing and emptying the MIXZR it is recommended that a good volume mix of water and 3/4"-1" Gravel is added to the Drum and "mixed" until the Drum is clean.

Do NOT throw larger objects such as bricks during cleaning as this will damage the inside surface of the Drum and the Paddles. Damage such as this will mean that the Drum will not mix effectively and become useless.

## 9. REPLACING YOUR MIXZR DRUM

If your MIXZR Drum becomes worn or damaged it may be necessary to replace it. This can be done simply and safely using the following instructions:



## 9. REPLACING YOUR MIXZR DRUM (cont.)

1. Unplug MIXZR from main power.
2. Swing the Drum Locking Spanner over until it sits on top of the Gearbox Shaft.
3. Rotate the Drum until the Drum Locking Spanner locates on to the flats on the Gearbox Shaft.
4. Sharply rotate the Drum in an anti-clockwise direction to loosen the Drum from the Gearbox Shaft.  
**WARNING: NEVER TRY TO LOOSEN THE DRUM FROM THE GEARBOX SHAFT BY SWITCHING ON THE MIXER. THE ROTATION WILL CAUSE SEVERE DAMAGE TO THE MIXZR AND MAY CAUSE INJURY OR WORSE TO PERSONS NEARBY.**
5. Unscrew the Drum from the Gearbox Shaft.
6. Clean the threads of the Gearbox Shaft before replacing the Drum.
7. Before fitting the new Drum, it is advisable to apply a suitable grease / moly compound to the threads of the Gearbox Shaft in order to aid subsequent removals of the Drum.
8. With the Drum Locking Spanner still in position, carefully lift the replacement Drum on to the Gearbox shaft and screw into position. Finish off with a sharp clockwise rotation to lock the Drum on to the Shaft.
9. Swing the Drum Locking Spanner clear of the Gearbox Shaft. It may be necessary to rotate the Drum slightly to free the Spanner from the Shaft.

## 10. ROUTINE MAINTENANCE

- Daily: Check tightness of all fasteners after the first day use, there after check monthly.  
Lubricate Links and Hinges.  
Lubricate Shafts, Wheels and Bearings.
- Weekly: Lubricate the Drum Shaft.  
Check the condition of the electrical cord and replace if damaged.
- Monthly: Check tightness of fastenings.  
Check condition of Drum and Mixing Paddles

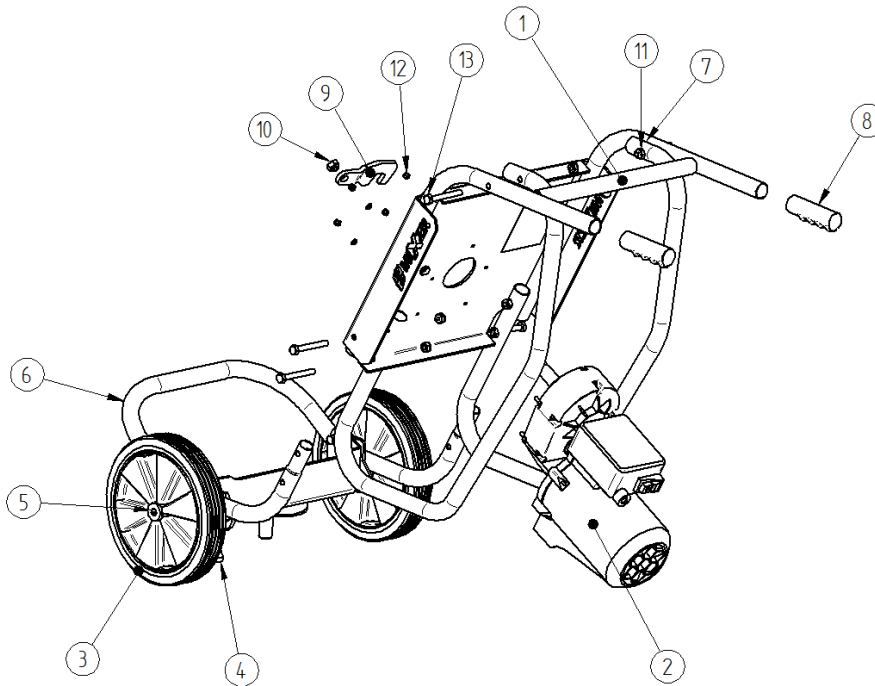
## 11. ENVIRONMENT

This machine contains materials that can be recycled. We recommend that when the machine is disposed of it is done safely and in a way that protects the environment.

<b>Part Description</b>	<b>Materials</b>
Electric Motor	Aluminum, Plastic and Steel
MIXZR Frame	Steel
MIXZR Drum	Steel
MIXZR Cover	HDPE Plastic
Gearbox	Aluminum and Steel
Handle Grips	Rubber
Wheels	Steel and Rubber
Fasteners	Steel and Plastic
Electrical Cable	Plastic, Rubber and Copper

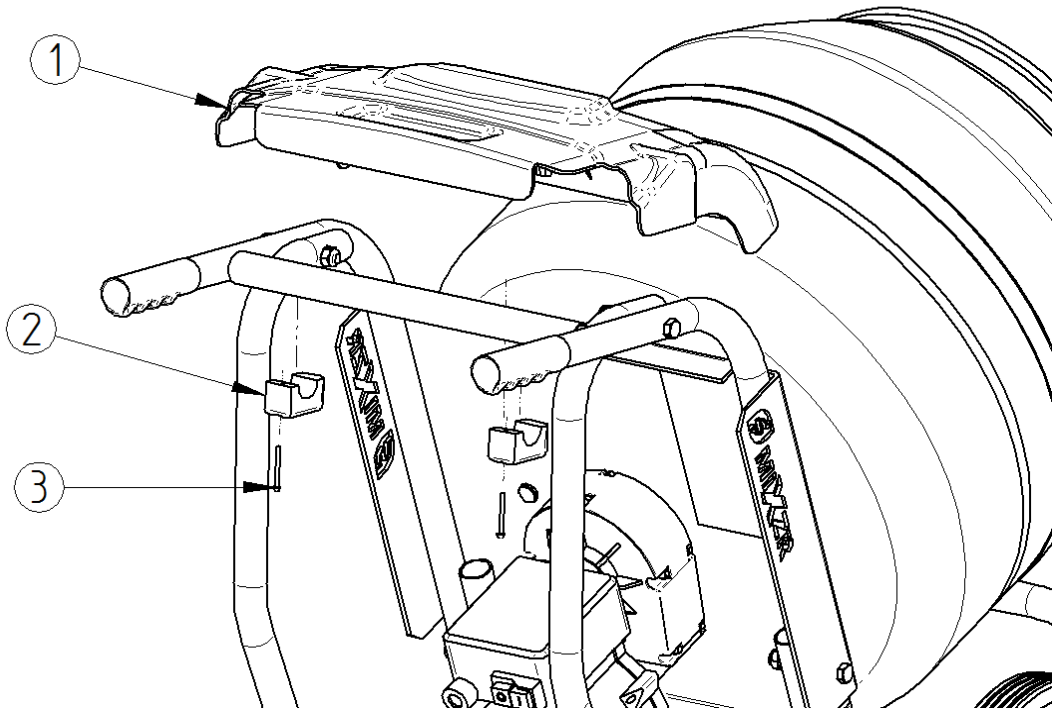
## 12. PARTS LIST – MIXZR FRAME, MOTOR AND WHEELS

Ref #	Part #	Description	Qty
1	GPR111506	Upper Frame Weldment	1
2	GPR111507	Motor/Gearbox – 120V/60Hz	1
3	GPR111508	Wheel	2
4	GPR111509	Locking Lever	1
5	GPR111510	Wheel Plug	2
6	GPR111511	Front Frame Weldment	1
7	GPR111512	Rear Tube	1
8	GPR111513	Handle Grip	2
9	GPR111514	Spanner	1
10	GPR111515	M12 Nylon Locknut	1
11	GPR111516	M10 Dome Nut	6
12	GPR111517	M6 Nylon Locknut	4
13	GPR111518	M10X80 Hex Head Set screw	6



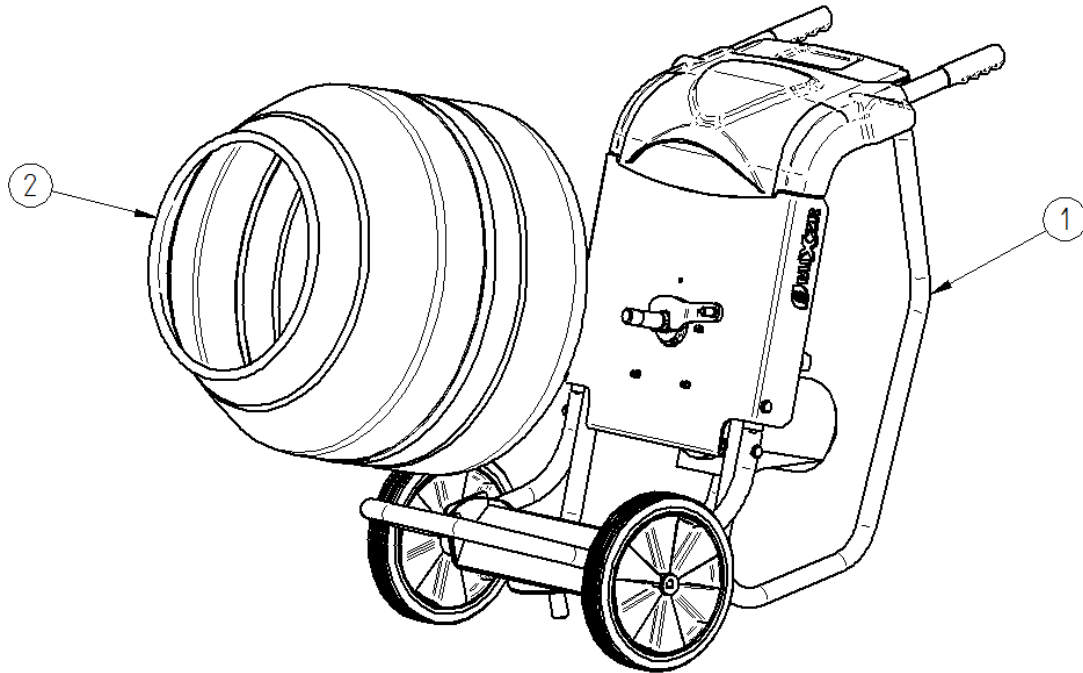
## 12. PARTS LIST – MIXZR FRAME AND COVER

Ref #	Part #	Description	Qty
1	GPR111519	Cover	1
2	GPR111520	Retainer	2
3	GPR111521	Retaining Screw	2



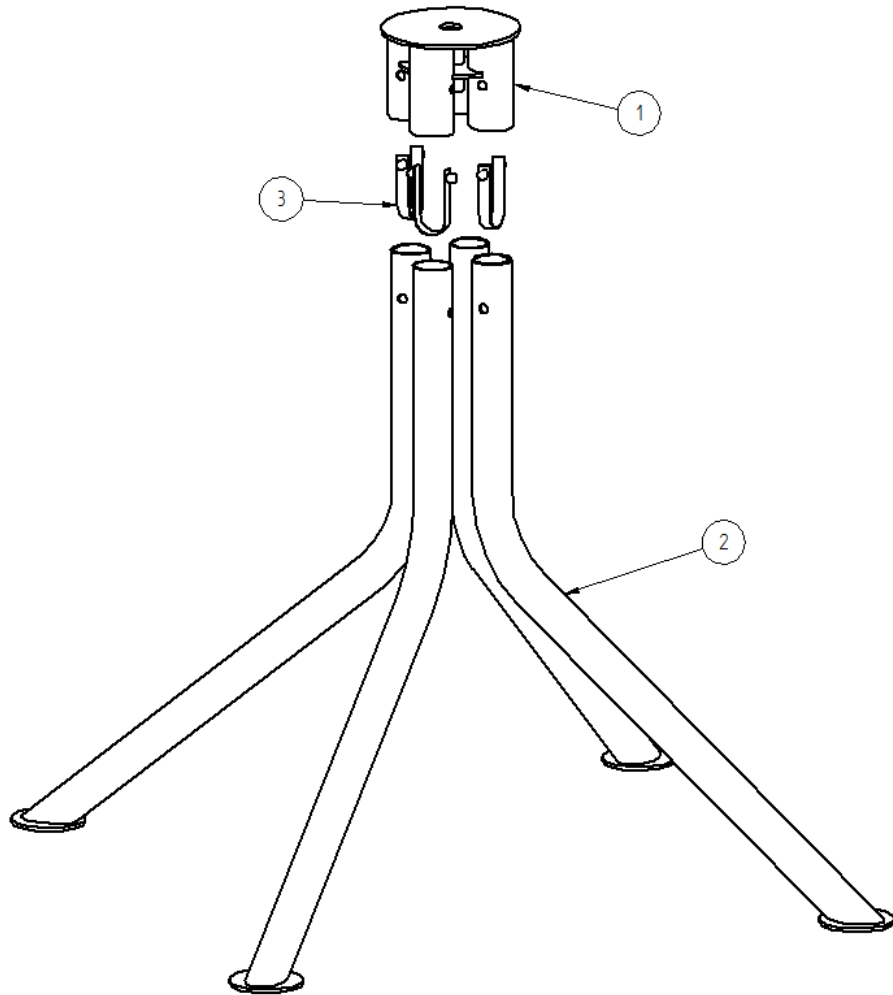
## 12. PARTS LIST – MIXZR FRAME AND DRUM

Ref #	Part #	Description	Qty
1	GPR111522	MIXZR Frame Assembly	1
2	GPR111523	Drum Weldment	1



## 12. PARTS LIST – MIXZR FRAME AND DRUM

Ref #	Part #	Description	Qty
1	GPR111524	Stand Socket	1
2	GPR111525	Leg Weldment	4
3	GPR111526	Spring Clips	4



**Dear Valued Customer:**

The Brave product you just purchased is built with the finest material and craftsmanship. Use this product properly and enjoy the benefits from its high performance. By purchasing a Brave product, you show a desire for quality and durability. Like all mechanical equipment this unit requires a due amount of care. Treat this unit like the high-quality piece of machinery it is. Neglect and improper handling may impair its performance.

Thoroughly read the instructions and understand the operation before using your product. Always contact Brave Product Support at 1-800-350-8739 prior to having any service or warranty work performed, as some services performed by parties other than Brave approved service centers may void this warranty. This limited warranty is in lieu of any other warranty expressed or implied, written, or oral and Brave assumes no other responsibility or liability outside that expressed within this limited warranty.

**Limited Warranty for Brave Mixer:**

	<b>Consumer Warranty Period</b>	<b>Commercial Warranty Period</b>
<b>Weldments</b>		
	2 years from date of purchase by user	2 years from date of purchase by user
<b>Wear Parts</b>	In addition to the normal warranty, Brave shall warrant some normal wear items from defects in material or workmanship for a period of 30 days from the date of purchase by user. Normal wear items covered under this warranty are limited to: High impact wear related components such as standard retention hardware for wear items, chains, bits, sprockets, bearings, belts and bushings, centrifugal clutch components such as shoes, springs, drum and rotor assembly, rotors, rubber drapes or flaps, drive, and driven pulleys. Routine maintenance items such as lubricants, clutch adjustments, tune ups are not covered under warranty.	
<b>Engines</b>	The engine warranty is covered under the terms and conditions as outlined by the engine manufacturer’s warranty contained herein and is the sole responsibility of the engine manufacturer. Normal engine maintenance such as spark plugs, oil changes, air filters, adjustments, fuel system cleaning and obstruction due to build up is not covered by this Brave limited warranty.	

**Model GPE21105**

“Consumer use” means personal residential household use by a consumer. “Commercial use” means all other uses, including, but not limited to, use for commercial, income producing or rental purposes or when purchased by a business.

This limited warranty applies to the original purchaser of the equipment (verification of purchase, in the form of a receipt, is the responsibility of the buyer), is non-transferable, and covers parts and labor. Parts will be replaced or repaired at no charge, except when the equipment has failed due to lack of proper maintenance. If a part is no longer available, the part may be replaced with a similar part of equal function. Any misuse, abuse, alteration or improper installation or operations will void the warranty. Determining whether a part is to be replaced or repaired is the sole decision of Brave. Brave will not provide replacement of complete products due to defective parts. Any costs incurred due to replacement or repair of items outside of a Brave approved facility is the responsibility of the buyer and not covered under warranty. Transportation costs to and from the service center and/or service calls are the responsibility of the customer.

This limited warranty specifically excludes the following: failure of parts due to damage caused by accident, fire, flood, windstorm, acts of God, applications not approved by Brave in writing, corrosion caused by chemicals, use of replacement parts which do not conform to manufacturer’s specifications, damage related to rodent and/or insect infestation and damage caused by vandalism. Additional exclusions: loss of running time, inconvenience, loss of income, or loss of use, including any implied warranty of merchantability of fitness for a specific use. Also, outdoor power equipment needs periodic parts and service to perform well, and this limited warranty does not cover instances when normal use has exhausted the life of a component or the engine.

This limited warranty does not cover any personal injury or damage to surrounding property caused by failure of any part, misuse, or inability to use the product. Alteration of the product, including safety features, shall void this limited warranty.

Repair or replacement of parts does not extend the warranty period. This limited warranty gives you specific legal rights. You may also have other rights that vary by state. Please have model number, item number and serial number on hand prior to making a warranty claim or inquiry.

**BRAVE**

# **BRAVE**

20195 S. Diamond Lake Rd, Ste 100  
Rogers, MN 55374  
1-800-350-8739

10/2023