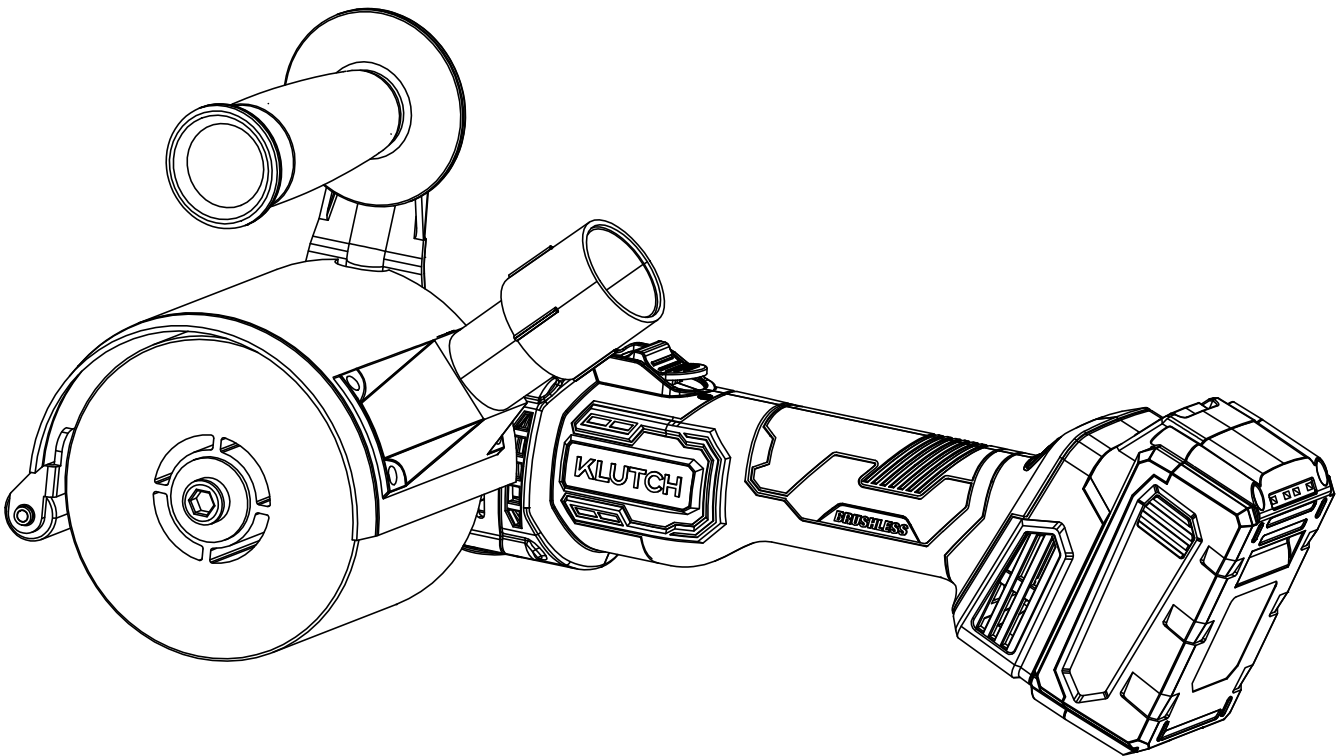


KLUTCH™

20V BRUSHLESS SURFACE CONDITIONING TOOL

Owner's Manual



For maximum performance,
use 4.0Ah battery or greater
(Sold Separately)

⚠ WARNING: Read carefully and understand all ASSEMBLY AND OPERATION INSTRUCTIONS before operating. Failure to follow the safety rules and other basic safety precautions may result in serious personal injury.

Item # 6111465

READ & SAVE THESE INSTRUCTIONS

Thank you very much for choosing a KLUTCH product!

For future reference, please complete the owner's record below:

Serial Number/Lot Date Code: _____

Purchase Date: _____

Save the receipt, warranty, and this manual. It is important that you read the entire manual to become familiar with this product before you begin using it.

This 20V Brushless Surface Conditioning Tool designed for certain applications only. Northern Tool and Equipment is not responsible for issues arising from modification or improper use of this product such as an application for which it was not designed. We strongly recommend that this product not be modified and/or used for any application other than that for which it was designed.

For technical questions, please call (800) 222-5381.

GENERAL POWER TOOL SAFETY INSTRUCTIONS

WARNING: Read all instructions. Failure to follow the warnings and instructions may result in electric shock, fire and/or serious injury. Retain this manual for future reference.

1. Work area safety

- a. Keep work area clean and well lit. Cluttered or dark areas invite accidents.
- b. Do not operate power tools in explosive atmospheres, such as in the presence of flammable liquids, gases or dust. Power tools create sparks which may ignite the dust or fumes.
- c. Keep children and bystanders away while operating a power tool. Distractions can cause you to lose control.

2. Electrical safety

- a. Power tool plugs must match the outlet. Never modify the plug in any way. Do not use any adapter plugs with grounded surfaces power tools. Unmodified plugs and matching outlets will reduce risk of electric shock.
- b. Avoid body contact with grounded surfaces such as pipes, radiators, ranges and refrigerators. There is an increased risk of electric shock if your body is grounded.
- c. Do not expose power tools to rain or wet conditions. Water entering a power tool will increase the risk of electric shock.
- d. Do not abuse the cord. Never use the cord for carrying, pulling or unplugging the power tool. Keep cord away from heat, oil, sharp edges or moving parts. Damaged or entangled cords increase the risk of electric shock.
- e. When operating a power tool outdoors, use an extension cord suitable for outdoor use. Use of a cord suitable for outdoor use reduces the risk of electric shock.
- f. If operating a power tool in a damp location is unavoidable, use a residual current device (RCD) protected supply. Use of an RCD reduces the risk of electric shock.

3. Personal safety

- a. Stay alert, watch what you are doing and use common sense when operating a power tool. Do not use power tools while you are tired or under the influence of drugs, alcohol or medication. A moment of inattention while operating power tools may result in serious personal injury.
- b. Use personal protective equipment. Always wear eye protection. Protective equipment such as dust mask, nonskid safety shoes, hard hat, or hearing protection used for appropriate conditions will reduce personal injuries.
- c. Prevent unintentional starting. Ensure the switch is in the off-position before connecting to power source and/or battery pack, picking up or carrying the tool. Carrying power tools with your finger on the switch or energizing power tools that have the switch on invites accidents.
- d. Remove any adjusting key or wrench before turning the power tool on. A wrench or a key left attached to a rotating part of the power tool may result in personal injury.
- e. Do not overreach. Keep proper footing and balance at all times. This enables better control of the power tool in unexpected situations.
- f. Dress properly. Do not wear loose clothing or jewellery. Keep your hair, clothing and gloves away from moving parts. Loose clothes, jewellery or long hair can be caught in moving parts.
- g. If devices are provided for the connection of dust extraction and collection facilities, ensure these are connected and properly used. Use of dust collection can reduce dust-related hazards.

4. Personal protection

- a. Risk of eye injury. Wear safety glasses or similar eye protection. Use a face or dust mask whenever the operations may produce dust or flying particles.
- b. Wear ear protection whenever the sound level seems uncomfortable.
- c. Do not overreach
- d. Keep proper footing and balance at all times.

GENERAL POWER TOOL SAFETY INSTRUCTIONS

5. Use the appropriate tool

- a. The intended use is described in this instruction manual. Do not force small tools or attachments to do the job of a heavy-duty tool.
- b. The tool will do the job better and safer at the rate for which it was intended. The use of any accessory or attachment or performance of any operation with this tool other than those recommended in this instruction manual may present a risk of personal injury. Do not force the tool.

6. Maintain tools with care

- a. Keep cutting tools sharp and clean for better and safer performance.
- b. Follow the instructions for maintenance and changing accessories.
- c. Keep handles and switches dry, clean, and free from oil and grease.

7. Check for damaged parts

- a. Before using the tool, carefully check it for damage to ensure that it will operate properly and perform its intended function.
- b. Check for misalignment and seizure of moving parts, breakage of parts and any other conditions that may effect its operation.
- c. Have any defective parts repaired or replaced by an authorized repair agent. Do not use the tool if any part is defective.
- d. Never attempt any repairs yourself.

8. Battery tool use and care

- a. Recharge only with the charger specified by the manufacturer. A charger that is suitable for one type of battery pack may create a risk of fire when used with another battery pack.
- b. Use power tools only with specifically designated battery packs. Use of any other battery packs may create a risk of injury and fire.
- c. When battery pack is not in use, keep it away from other metal objects, like paper clips, coins, keys, nails, screws or other small metal objects, that can make a connection from one terminal to another. Shorting the battery terminals together may cause burns or a fire.
- d. Under abusive conditions, liquid may be ejected from the battery; avoid contact. If contact accidentally occurs, flush with water. If liquid contacts eyes, additionally seek medical help. Liquid ejected from the battery may cause irritation or burns.

9. Remove the battery

- a. Reduce the risk of injury to persons. Remove the battery pack when the tool is not in use, before changing any parts of the tool, accessories or attachments, and before cleaning or servicing.
- b. Avoid unintentional starting
- c. Do not carry the tool with a finger on the on/off switch.

10. Battery

- a. Do not use a battery pack or tool that is damaged or modified. Damaged or modified batteries may exhibit unpredictable behaviour resulting in fire, explosion or risk of injury.
- b. Do not expose a battery pack or tool to fire or excessive temperature. Exposure to fire or temperature above 130 °C(266°F) may cause explosion.
- c. Follow all charging instructions and do not charge the battery pack or tool outside the temperature range specified in the instructions. Charging improperly or at temperatures outside the specified range may damage the battery and increase the risk of fire.

11. Never carry the charger by its cord or pull it to disconnect from the socket. Keep the cord away from heat, oil, and sharp edges.

12. Service

Have your power tool serviced by a qualified repair person using only identical replacement parts. This will ensure that the safety of the power tool is maintained.

SPECIAL SAFETY INSTRUCTIONS

General Safety Recommendations for grinding, sanding, wire brushing, polishing and cutting-off operations:

- a) This power tool is intended to function as a sander, wire brush or polisher. Read all safety warnings, instructions, illustrations and specifications provided with this power tool. Failure to follow all instructions listed below may result in electric shock, fire and/or serious injury.
- b) Operations such as grinding or cutting-off are not recommended to be performed with this power tool. Operations for which the power tool was not designed may create a hazard and cause personal injury.
- c) Do not use accessories which are not specifically designed and recommended by the tool manufacturer. Just because the accessory can be attached to your power tool, it does not assure safe operation.
- d) The rated speed of the accessory must be at least equal to the maximum speed marked on the power tool. Accessories running faster than their rated speed can break and fly apart.
- e) The outside diameter and the thickness of your accessory must be within the capacity rating of your power tool. Incorrectly sized accessories cannot be adequately guarded or controlled.
- f) Threaded mounting of accessories must match the sanding spindle thread. For accessories mounted by flanges, the arbour hole of the accessory must fit the locating diameter of the flange. Accessories that do not match the mounting hardware of the power tool will run out of balance, vibrate excessively and may cause loss of control.
- g) Do not use a damaged accessory. Before each use inspect the accessory such as abrasive wheels for chips and cracks, backing pad for cracks, tear or excess wear, wire brush for loose or cracked wires. If a power tool or accessory is dropped, inspect for damage or install an undamaged accessory. After inspecting and installing an accessory, position yourself and bystanders away from the plane of the rotating accessory and run the power tool at maximum no-load speed for one minute. Damaged accessories will normally break apart during this test time.
- h) Wear personal protective equipment. Depending on application, use face shield, safety goggles or safety glasses. As appropriate, wear dust mask, hearing protectors, gloves and workshop apron capable of stopping small abrasive or workpiece fragments. The eye protection must be capable of stopping flying debris generated by various operations. The dust mask or respirator must be capable of filtering particles generated by your operation. Prolonged exposure to high intensity noise may cause hearing loss.
- i) Keep bystanders a safe distance away from work area. Anyone entering the work area must wear personal protective equipment. Fragments of workpiece or of a broken accessory may fly away and cause injury beyond immediate area of operation.
- j) Hold the power tool by the insulated gripping surfaces only when performing an operation where the accessory may contact hidden wiring or its own cord. Cutting accessory contacting a "live" wire may make exposed metal parts of the power tool "live" and shock the operator.
- k) Position the cord clear of the spinning accessory. If you lose control, the cord may be cut or snagged and your hand or arm may be pulled into the spinning accessory.
- l) Never lay the power tool down until the accessory has come to a complete stop. The spinning accessory may grab the surface and pull the power tool out of your control.
- m) Do not run the power tool while carrying it at your side. Accidental contact with the spinning accessory could snag your clothing, pulling the accessory into your body.
- n) Regularly clean the power tool's air vents. The motor's fan will draw the dust inside the housing and excessive accumulation of powdered metal may cause electrical hazards.
- o) Do not operate the power tool near flammable materials. Sparks could ignite these materials.
- p) Do not use accessories that require liquid coolants. Using water or other liquid coolants may result in electrocution or shock.

SPECIAL SAFETY INSTRUCTIONS

Kickback and related warnings

Kickback is a sudden reaction to a pinched or snagged sanding wheel, backing pad, brush or any other accessory. Pinching or snagging causes rapid stalling of the rotating accessory which in turn causes the uncontrolled power tool to be forced in the direction opposite of the accessory's rotation at the point of the binding.

For example, if an abrasive wheel is snagged or pinched by the workpiece, the edge of the wheel that is entering into the pinch point can dig into the surface of the material causing the wheel to climb out or kick out. The abrasive wheel may either jump toward or away from the operator, depending on direction of the disc's movement at the point of pinching. Abrasive wheels may also break under these conditions.

Kickback is the result of power tool misuse and/or incorrect operating procedures or conditions and can be avoided if suitable precautionary measures are taken as described below.

- a) Maintain a firm grip on the power tool and position your body and arm to allow you to resist kickback forces. Always use auxiliary handle, if provided, for maximum control over kickback or torque reaction during start-up. The operator can control torque reactions or kickback forces, if proper precautions are taken.
- b) Never place your hand near the rotating accessory. Accessory may kickback over your hand.
- c) Do not position your body in the area where the power tool will move if kickback occurs. Kickback will propel the tool in direction opposite to the grinding wheel's movement at the point of snagging.
- d) Use special care when working corners, sharp edges etc. Avoid bouncing and snagging the accessory. Corners, sharp edges or bouncing have a tendency to snag the rotating accessory and cause loss of control or kickback.

Safety Warnings Specific for Sanding Operations:

- a) Do not use excessively oversized sanding disc paper. Follow manufacturers recommendations when selecting sanding paper. Larger sanding paper extending beyond the sanding pad presents a laceration hazard and may cause snagging, tearing of the disc or kickback.

Safety Warnings Specific for Polishing Operations:

Do not allow any loose portion of the polishing bonnet or its attachment strings to spin freely. Tuck away or shorten the loose attachment strings. Loose and spinning attachment strings can entangle your fingers or snag on the workpiece.

Safety Warnings Specific for Wire Brushing Operations:

- a) Be aware that wire bristles are thrown by the brush even during ordinary operation. Do not over stress the wires by applying excessive load to the brush. The wire bristles can easily penetrate light clothing and/or skin.
- b) If the use of a guard is recommended for wire brushing, do not allow any interference of the wire wheel or brush with the guard. Wire wheel or brush may expand in diameter due to work load and centrifugal forces.

Additional Safety Instructions:

WARNING – Always wear protective goggles.

Use elastic cushioning layers if they have been supplied with the grinding media and if required.

Observe the specifications of the tool or accessory manufacturer!

Accessories must be stored and handled with care in accordance with the manufacturer's instructions. Ensure that accessories are installed in accordance with the manufacturer's instructions.

SPECIAL SAFETY INSTRUCTIONS

The tool continues running after the machine has been switched off.

When sanding and working with the lambskin, polishing disc with cord drive, always work with the safety guard installed.

Do not use separate reducing bushings or adapters to adapt tools with a large hole.

The workpiece must lay flat and be secured against slipping, e.g. using clamps. Large workpieces must be sufficiently supported.

If accessories with threaded inserts are used, the end of the spindle may not touch the base of the hole on the sanding tool. Make sure that the thread in the accessory is long enough to accommodate the full length of the spindle. The thread in the accessory must match the thread on the spindle.

Damaged, eccentric or vibrating tools must not be used.

A damaged or cracked side handle must be replaced. Never operate a machine with a defective side handle.

Only use the machine if the protective cover is in place.

Always guide the machine with both hands on the handles provided

Special safety instructions for cordless machines:

Remove the battery pack from the machine before making any adjustments, changing tools, maintaining or cleaning.

Make sure that the tool is switched off before fitting the battery pack.



Protect battery packs from water and moisture!



Do not expose battery packs to naked flame!

Do not use faulty or deformed battery packs!

Do not open battery packs!

Do not touch or short circuit battery pack contacts!



A slightly acidic, flammable fluid may leak from defective Li-ion battery packs!



If battery fluid leaks out and comes into contact with your skin, rinse immediately with plenty of water. If battery fluid leaks out and comes into contact with your eyes, wash them with clean water and seek medical attention immediately!

If the machine is defective, remove the battery pack from the machine.

Transport of li-ion battery packs:

The shipping of li-ion battery pack is subject to laws related to the carriage of hazardous goods (UN 3480 and UN 3481). Inform yourself of the currently valid specifications when shipping li-ion battery packs. If necessary, consult your freight forwarder. Only send the battery pack if the housing is intact and no fluid is leaking.

Remove the battery pack from the machine for sending. Prevent the contacts from short-circuiting (e.g. by protecting them with adhesive tape).

Reducing dust exposure:

Some of the dust created using this power tool may contain chemicals known to cause cancer, allergic reaction, respiratory disease, birth defects or other reproductive harm. Some of these substances include: lead (in paint containing lead), mineral dust (from bricks, concrete etc.), additives used for wood treatment (chromate, wood preservatives), some wood types (such as oak or beech dust), metals, asbestos.

The risk from exposure to such substances will depend on how long you or bystanders are being exposed.

SPECIAL SAFETY INSTRUCTIONS

Do not let particles enter the body.

Do the following to reduce exposure to these substances: ensure good ventilation of the workplace and wear appropriate protective equipment, such as respirators able to filter microscopically small particles.

Observe the relevant guidelines for your material, staff, application and place of application (e.g. occupational health and safety regulations, disposal).

Collect the generated particles at the source, avoid deposits in the surrounding area.

Use suitable accessories for special work, thus less particles enter the environment in an uncontrolled manner.

Use a suitable extraction unit.

Reduce dust exposure with the following measures:

- Do not direct the escaping particles and the exhaust air stream at yourself or nearby persons or on dust deposits.
- Use an extraction unit and/or air purifiers
- Ensure good ventilation of the workplace and keep clean using a vacuum cleaner. Sweeping or blowing stirs up dust
- Vacuum or wash protective clothing. Do not blow, beat or brush.

SPECIFICATION

The surface conditioning tool is suited for

- Burnishing, deadening, structuring and brushing,
- Polishing and smoothing,
- Sanding and deburring the following materials:
- Metal, wood and plastics.

It is for dry processing only.

The user bears sole responsibility for any damage caused by inappropriate use.

Generally accepted accident prevention regulations and the enclosed safety information must be observed.

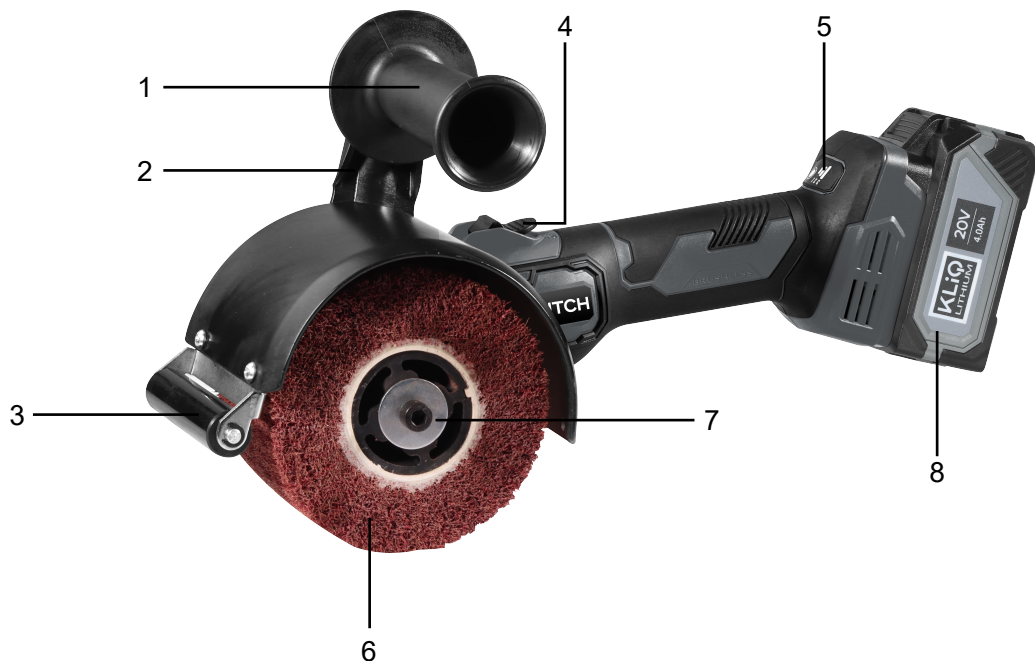
Voltage: 20V Max

No load speed: 600~2500rpm (6settings)

Brush Wheel Size: 4.7"x3.9"

FUNCTION

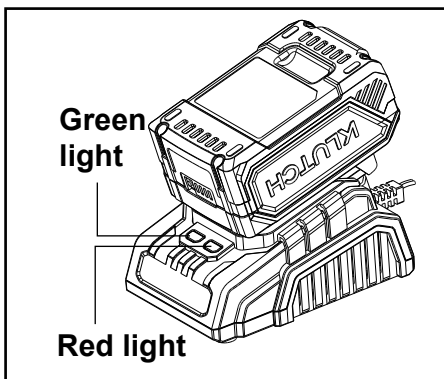
1. Auxiliary Handle
2. Handle Bar
3. Auxiliary Roller
4. Sliding On/Off Switch
5. Speed Control Button
6. Brush Wheel
7. Wheel Spindle
8. Battery Pack(Sold Separately)



OPERATION

CHARGING BATTERIES(SOLD SEPARATELY)

1. Place the Battery Pack on a dry fireproof surface in a room where the temperature is from 50° F to 104° F.
Note: If recharging a newly spent Battery Pack, allow it to cool completely before charging.
2. Examine the Battery Pack. It must be an undamaged 20V lithium-ion type Battery Pack. Do not charge a cracked, open, or leaking Battery Pack, or charge a non-recommended type of Battery Pack.
3. The Battery Pack's terminals are designed to fit this Charger specifically. If the Battery Pack does not fit the Charger properly, do not try to insert it. Do not force a Battery Pack into the Charger.
4. Make sure the power supply is normal household voltage, 120 volts, AC only, 60 Hz.
5. Connect the charger to a power supply.
6. Slide the Battery Pack onto the Charger
7. The battery pack may become slightly warm to the touch while charging. This is normal and does not indicate a problem.
8. After charging is complete, the green LED will remain on while the charger is in Energy Save mode.
9. Charger will periodically wake from Energy Save mode to ensure the battery pack remains in a fully charged state.
10. To remove the battery pack from the charger, depress the latches on the top of the battery pack and separate battery from charger.



CHARGING A HOT BATTERY PACK

When using a tool continuously, the battery pack may become hot. A hot battery pack may be placed directly onto the charger port but charging will not begin until the battery temperature cools to within acceptable temperature range. When a hot battery pack is placed on the charger, the red LED will begin flashing. When the battery pack cools, the charger will automatically begin charging.

The LED lights on charger show different status as below.

LED FUNCTIONS			
RED LED	GREEN LED	STATUS	ACTION
Off	On	Power	Ready to charge battery pack.
Off	Flashing	Charging	Battery is being charged.
Off	On	Fully charged	Disconnect charger from power supply and remove battery pack from charger.
Flashing	Off	Hot battery	The charger will recover to charge when the temperature drops to 104° F (40°C).
On	Off	Battery defective	Battery pack or charger is defective

OPERATION

Caution

Fully charge battery before first use.

Avoid short periods of charging. Only charge battery pack when it completely runs out.

In order to extend the battery life, fully charge it after each use and ensure that it is charged every three months.

Avoid storing batteries in cold places as low temperatures may cause them to fail.

ASSEMBLY

Installing the auxiliary handle

Install the auxiliary handle(1) onto the handlebar (2), then hold the nut with a wrench with one hand and tighten the auxiliary handle with the other hand.

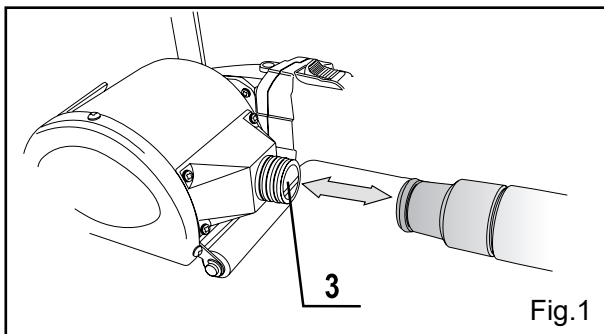
Installing the Auxiliary roller

Install the auxiliary roller(3) at the front or rear end of the protective cover. Auxiliary roller makes operation more precise and stable.

Dust filter

Always fit the dust filter if the surroundings are heavily polluted. The machine heats up faster when the dust filter is fitted. It is protected by the electronics system from overheating.

Install the dust cover on the rear end of the protective cover and connect the vacuum cleaner.



To attach the battery pack

Before starting the surface conditioning tool, you should install the battery pack on the machine.

WARNING! To avoid the possibility of accidental starting, always take care not to activate the trigger switch when you are attaching the battery pack or performing other adjustments to the tool.

Align the raised rib on the battery pack with the grooves on the bottom of the tool. and then attach the battery pack to the surface conditioning tool.

NOTICE: When attaching the battery pack to the tool, make sure that the raised platform on the pack aligns with the grooves on the bottom of the tool and that the latches snap properly into place. Improper assembly of the battery pack can cause damage to internal components.

OPERATION

Switching on and off

Always guide the machine with both hands.

Switch on first, then guide the accessory towards the workpiece.

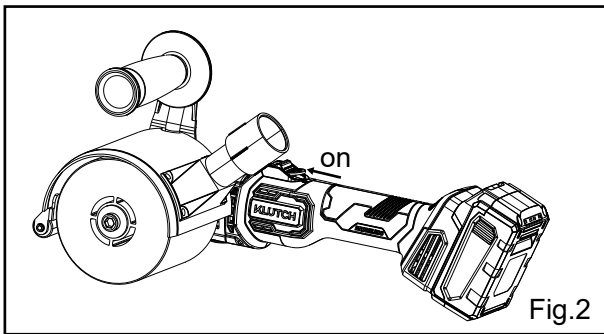
The machine must not be allowed to draw in additional dust and shavings. When switching the machine on and off, keep it away from dust deposits. After switching off the machine, only place it down when the motor has come to a standstill.

In continuous operation, the machine continues running if it is forced out of your hands. Therefore, always hold the machine with both hands using the handles provided, stand securely and concentrate.

Switching on: Push the sliding switch (4) forwards(fig.2).

For continuous operation, now tilt it downwards until it engages.

Switching off: Press the rear end of the slide switch (4) and release it.



Attaching the tools, working notes

Tools with threaded insert:

- Remove the tensioning spindle if necessary. Press in spindle locking button and hold in place. Unscrew the tensioning spindle using the open-ended spanner.
- Press in spindle locking button and hold in place.
- Screw the tool onto the spindle and tighten.

Tools for tensioning spindle:

- Attach the tensioning spindle if necessary. Press in spindle locking button and hold in place. Tighten the tensioning spindle using the open-ended spanner.
- Slide the tool onto the tensioning spindle.
- Press in spindle locking button and hold in place.
- Screw the tool fixing screw onto the tensioning spindle and tighten (the spindle locking knob engages and the tool can be secured).

WARNING! If the tools used are shorter than the tensioning spindle, insert the relevant distance sleeves. This is the only way to properly secure the tool.

Working Directions

Sanding, polishing, working with wire brushes: Apply moderate pressure on the machine and move it to and fro across the surface

MAINTENANCE

Remove the battery pack from the machine before starting any maintenance work. It is possible that particles deposit inside the power tool during operation. This impairs the cooling of the power tool.

Conductive build-up can impair the protective insulation of the power tool and cause electrical hazards.

The power tool should be cleaned regularly, often and thoroughly through all front and rear air vents using a vacuum cleaner or by blowing in dry air.

Prior to this operation, separate the power tool from the power source and wear protective goggles and a dust mask.

Replace the brush wheel

Press the spindle lock button, screw the tensioning spindle onto the spindle and loosen the bolt with a hex wrench. Take out the old brush wheel and put the new one in.

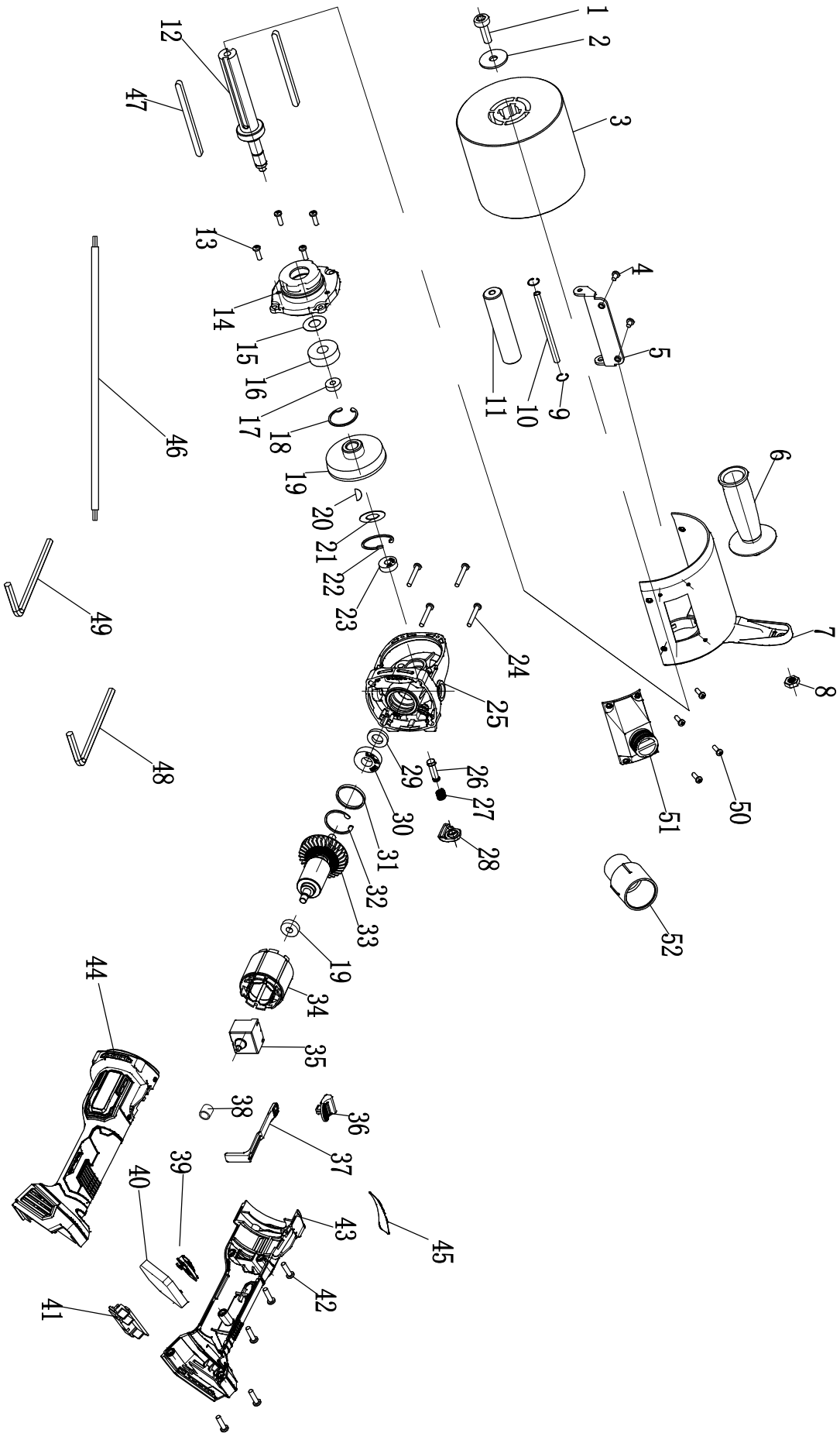
Troubleshooting

- The electronic signal indicator lights up and the load speed decreases. The temperature is too high! Run the machine in idling until the electronic signal indicator switches off.
- The electronic signal display flashes and the machine does not start. The restart protection is active. The machine will not start if the battery pack is inserted while the machine is on. Switch the machine off and back on again.

PARTS LIST

No.	Description	Qty	No.	Description	Qty
1	M8*16 Screw	1	27	Lock Button Spring	1
2	Washer	1	28	Lock Button	1
3	Wheel	1	29	Nut	1
4	M5*6 Screw	2	30	6001 Bearing	1
5	Guider	1	31	Seal Ring	1
6	M10 Side Handle	1	32	Retaining Ring	1
7	Guard	1	33	Armature	1
8	M10 Nut	1	34	Stator	1
9	Clip	2	35	Switch	1
10	Pole	1	36	Switch Button	1
11	Castor	1	37	Switch Lever	1
12	Pivot	1	38	Rubber Column	1
13	M4*14 Screw	4	39	Function Key Panel	1
14	Gear Box Cover	1	40	Controller	1
15	Washer	1	41	Socket	1
16	6201 Bearing	1	42	Screw	5
17	Adjust Sleeve	1	43	Right Motor House	1
18	Retaining Ring	1	44	Lef Motor House	1
19	Gear	1	45	Speed Label	1
20	Key	1	46	Wire	1
21	Washer	1	47	Key	2
22	Collar	1	48	Wrench	1
23	607 Bearing	2	49	Wrench	1
24	St4*28 Screw	4	50	M4*08 Screw	4
25	Gear Box	1	51	Dust Cover	1
26	Lock Pin	1	52	Dust Nozzle	1

SCHEMATIC DRAWING



REPLACEMENT PARTS

- For replacement parts and technical questions, please call Customer Service at (800) 222-5381.
- Not all product components are available for replacement. The illustrations provided are a convenient reference to the location and position of parts in the assembly sequence.
- When ordering parts, the following information will be required: item description, item model number, item serial number/item lot date code, and the replacement part reference number.
- The distributor reserves the rights to make design changes and improvements to product lines and manuals without notice.

LIMITED WARRANTY

Northern Tool and Equipment Company, Inc. ("We" or "Us") warrants to the original purchaser only ("You" or "Your") that the KLUTCH product purchased will be free from material defects in both materials and workmanship, normal wear and tear excepted, for a period of two years from date of purchase. The foregoing warranty is valid only if the installation and use of the product is strictly in accordance with product instructions. There are no other warranties, express or implied, including the warranty of merchantability or fitness for a particular purpose. If the product does not comply with this limited warranty.

Your sole and exclusive remedy is that We will, at our sole option and within a commercially reasonable time, either replace the product or product component without charge to You or refund the purchase price (less shipping). This limited warranty is not transferable.

Limitations on the Warranty

This limited warranty does not cover: (a) normal wear and tear; (b) damage through abuse, neglect, misuse, or as a result of any accident or in any other manner; (C) damage from misapplication, overloading, or improper installation; (d) improper maintenance and repair; and (e) product alteration in any manner by anyone other than Us, with the sole exception of alterations made pursuant to product instructions and in a workmanlike manner.

Obligations of Purchaser

You must retain Your product purchase receipt to verify date of purchase and that You are the original purchaser. To make a warranty claim, contact Us at (800) 222-5381, identify the product by make and model number, and follow the claim instructions that will be provided. The product and the purchase receipt must be provided to Us in order to process Your warranty claim. Any returned product that is replaced or refunded by Us becomes our property.

You will be responsible for return shipping costs or costs related to Your return visit to a retail store.

Remedy Limits

Product replacement or a refund of the purchase price is Your sole remedy under this limited warranty or any other warranty related to the product.

We shall not be liable for: service or labor charges or damage to Your property incurred in removing or replacing the product; any damages, including, without limitation, damages to tangible personal property or personal injury, related to Your improper use, installation, or maintenance of the product or product component; or any indirect, incidental or consequential damages of any kind for any reason.

Assumption of Risk

You acknowledge and agree that any use of the product for any purpose other than the specified use(s) stated in the product instructions is at Your own risk.

Governing Law

This limited warranty gives You specific legal rights, and You also may have other rights which vary from state to state. Some states do not allow limitations or exclusions on implied warranties or incidental or consequential damages, so the above limitations may not apply to You. This limited warranty is governed by the laws of the State of Minnesota, without regard to rules pertaining to conflicts of law. The state courts located in Dakota County, Minnesota shall have exclusive jurisdiction for any disputes relating to this warranty.

KLUTCH™

Distributed by:
Northern Tool & Equipment Company, Inc.
Burnsville, Minnesota 55306
www.northerntool.com

Made in China