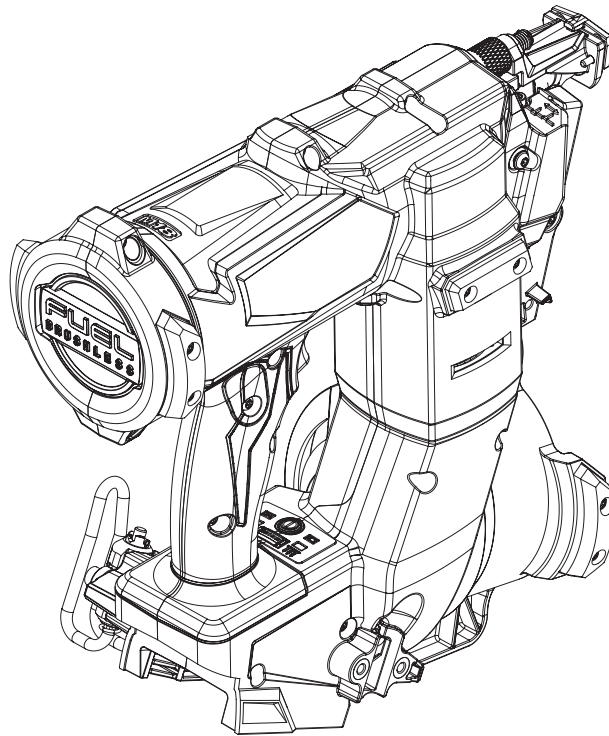




SERVICE PARTS LIST

BULLETIN NO.
PN0002710

SPECIFY CATALOG NO. AND SERIAL NO. WHEN ORDERING PARTS		REVISED BULLETIN	DATE
M18 FUEL™ ROOFING NAILER			Aug. 2024
CATALOG NO.	2909-20	SERIAL NO.	P10A
WIRING INSTRUCTION			



Only maintenance, service, repairs, and replacements of parts as defined in the Operator's Manual can be performed by the user.

All other repairs are to ONLY be performed by personnel authorized by MILWAUKEE TOOL. Do not attempt to install other parts; this COULD void your tool warranty.

For service, parts, or inquiries, contact us:

- Customer Service at 1.800.SAWDUST (1.800.729.3878)
- E-Service tool repair at: www.milwaukeetool.com/e-service
- Find a local authorized MILWAUKEE service location at Milwaukeetool.com
- Find a MILWAUKEE *factory* Service Center Location or MILWAUKEE *factory* Central Repair Center at Milwaukeetool.com. Send the following, posted paid and insured:
 - Your name, address, and phone number
 - Description of the issues
 - Copy of the proof of purchase
 - Tool, charger, and batteries involved with the issues

MILWAUKEE *factory* Central Repair Centers:

MILWAUKEE TOOL
Central Repair
1401 Sycamore Avenue
Greenwood, MS 38930

MILWAUKEE TOOL
Central Repair
2198 Southtech Drive
Greenwood, IN 46143

SERVICE PARTS EXPLODED VIEW

EXAMPLE:
Component Parts (Small #)
Are Included When Ordering
The Assembly (Large #).

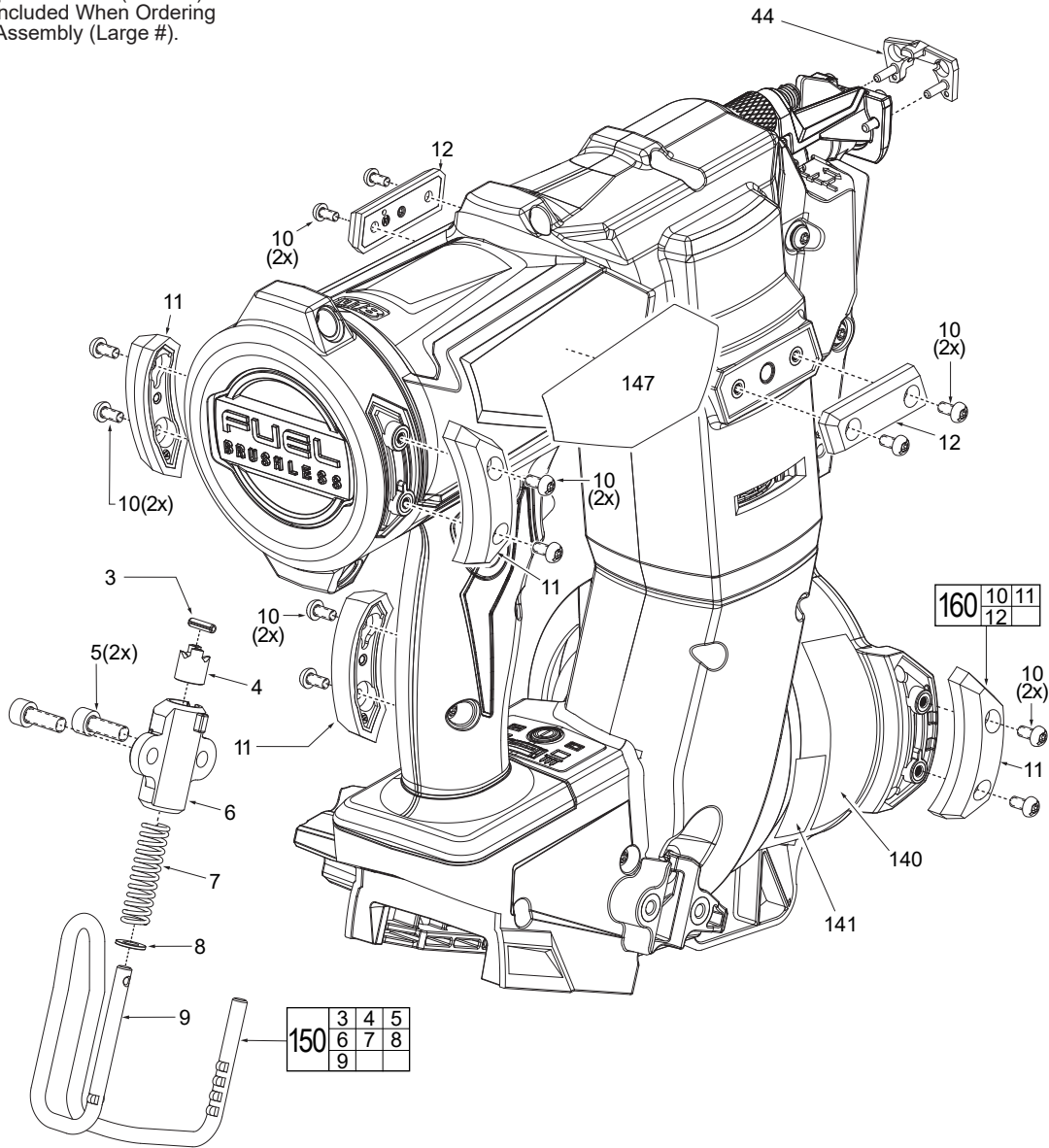


FIG.	PART NO.	DESCRIPTION OF PART	NO. REQ.
3	-----	Spring Pin	(1)
4	-----	Belt Hook Detent Sleeve	(1)
5	05-74-0019	M5 x 14mm Bolt	(2)
6	-----	Belt Hook Mount	(1)
7	-----	Rafter Hook Spring	(1)
8	45-88-0241	Flat Washer	(1)
9	-----	Foldable Belt Hook	(1)
10	06-82-0130	#6-32 Machine Screw	(12)
11	-----	Rear Skid Pad	(4)
12	-----	Front Skid Pad	(2)
44	48-08-9092	Siding Tip Assembly	(1)
140	10-22-0956	Warning Label (French/Spanish)	(1)
141	10-22-0957	Warning Label (Fastener Specs)	(1)
147	12-20-0597	Service Nameplate	(1)
150	42-70-8100	Belt Hook Assembly	(1)
160	48-09-9092	Wear Pad Service Kit	(1)

SCREW TORQUE SPECIFICATIONS				
FIG.	PART NO.	WHERE USED	SEAT TORQUE	
			(kgf-cm)	(lb-in)
5	05-74-0019	Belt Hook Mount	20±2	17±2
10	06-82-0130	Rear/Front Skid Pads	10±1	9±1