



SERVICE PARTS LIST

BULLETIN NO.
54-40-2785

SPECIFY CATALOG NO. AND SERIAL NO. WHEN ORDERING PARTS		REVISED BULLETIN	DATE
M18 FUEL™ 20" Dual Battery Chainsaw			Jan. 2025
CATALOG NO.	2827-20	STARTING SERIAL NO.	P40A
		WIRING INSTRUCTION SEE PAGE 4	

EXAMPLE:
Component Parts (Small #) Are Included
When Ordering The Assembly (Large #).

As an aid when servicing the chain saw, it is recommended that the brake bar is engaged prior to disassembling tool.

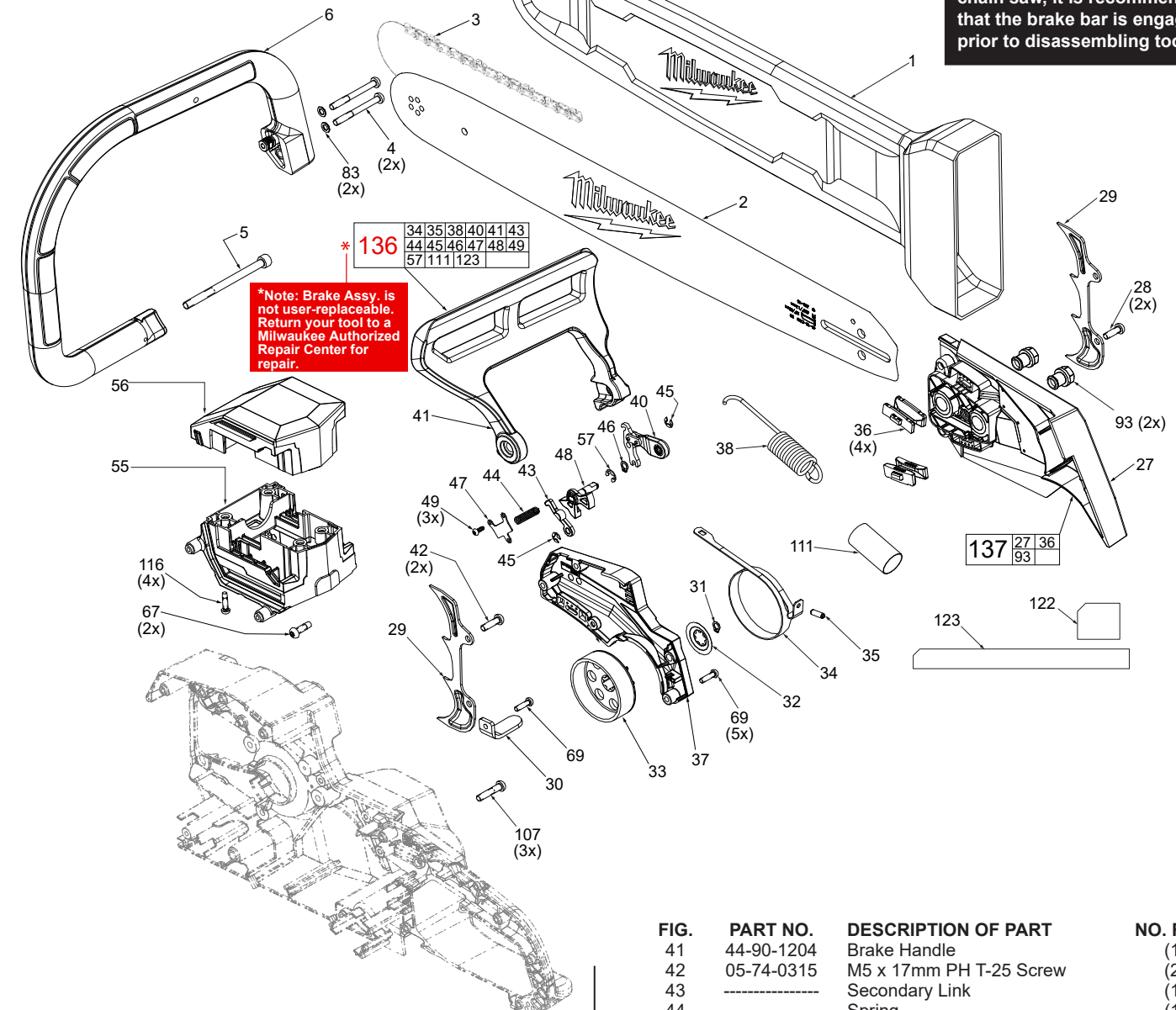


FIG.	PART NO.	DESCRIPTION OF PART	NO. REQ.
1	49-62-0600	Scabbard 20"	(1)
2	49-16-2755	Bar 20" (Accessory)	(1)
3	49-16-2752	Chain 20" (Accessory)	(1)
4	65-62-0200	M5 x 48mm PH T25 Screw	(2)
5	05-81-0064	M6 x 85mm Socket Head Screw	(1)
6	43-62-0402	Bail Handle	(1)
27	-----	Sprocket Cover	(1)
28	65-62-0164	M5 x 15mm PH T-25 Screw	(2)
29	40-50-2050	Spur Bracket	(2)
30	42-36-1200	Chain Catcher	(1)
31	34-60-0026	Snap Ring	(1)
32	45-88-0521	Disc Spring	(1)
33	45-44-1000	Sprocket	(1)
34	-----	Brake Band	(1)
35	44-60-1001	Pin	(1)
36	43-56-0044	Chain Guide (package of 4)	(1)
37	44-90-1203	Brake Cover	(1)
38	40-50-1004	Tension Spring	(1)
40	-----	Brake Linkage Assembly	(1)

FIG.	PART NO.	DESCRIPTION OF PART	NO. REQ.
41	44-90-1204	Brake Handle	(1)
42	05-74-0315	M5 x 17mm PH T-25 Screw	(2)
43	-----	Secondary Link	(1)
44	-----	Spring	(1)
45	-----	E-Ring	(2)
47	-----	Spring Cover	(1)
48	-----	Trigger and Pin Assembly	(1)
49	-----	M3 x 8mm PH T-10 Screw	(3)
55	31-50-1401	Battery Interface Bottom	(1)
56	31-50-1402	Battery Interface Top	(1)
57	42-70-0550	E-Ring	(1)
67	06-82-0029	M5 x 16mm PH T-25 Screw	(2)
69	65-62-0211	M4 x 14mm PH T-20 Screw	(6)
83	45-88-6232	Washer	(2)
93	-----	Capture Nut	(2)
107	06-82-3010	M5 x 24mm PH T-25 Screw	(3)
111	-----	Spring Sleeve	(1)
116	-----	M4 x 14mm PH T-20 Screw	(4)
122	10-22-0650	Battery Label	(1)
123	10-22-0652	Warning Label	(1)
136	-----	*Brake Assembly	(1)
137	45-44-1001	Sprocket Cover Assembly	(1)

MILWAUKEE TOOL • www.milwaukeetool.com
13135 W. LISBON RD., BROOKFIELD, WI 53005
Dwg. 3

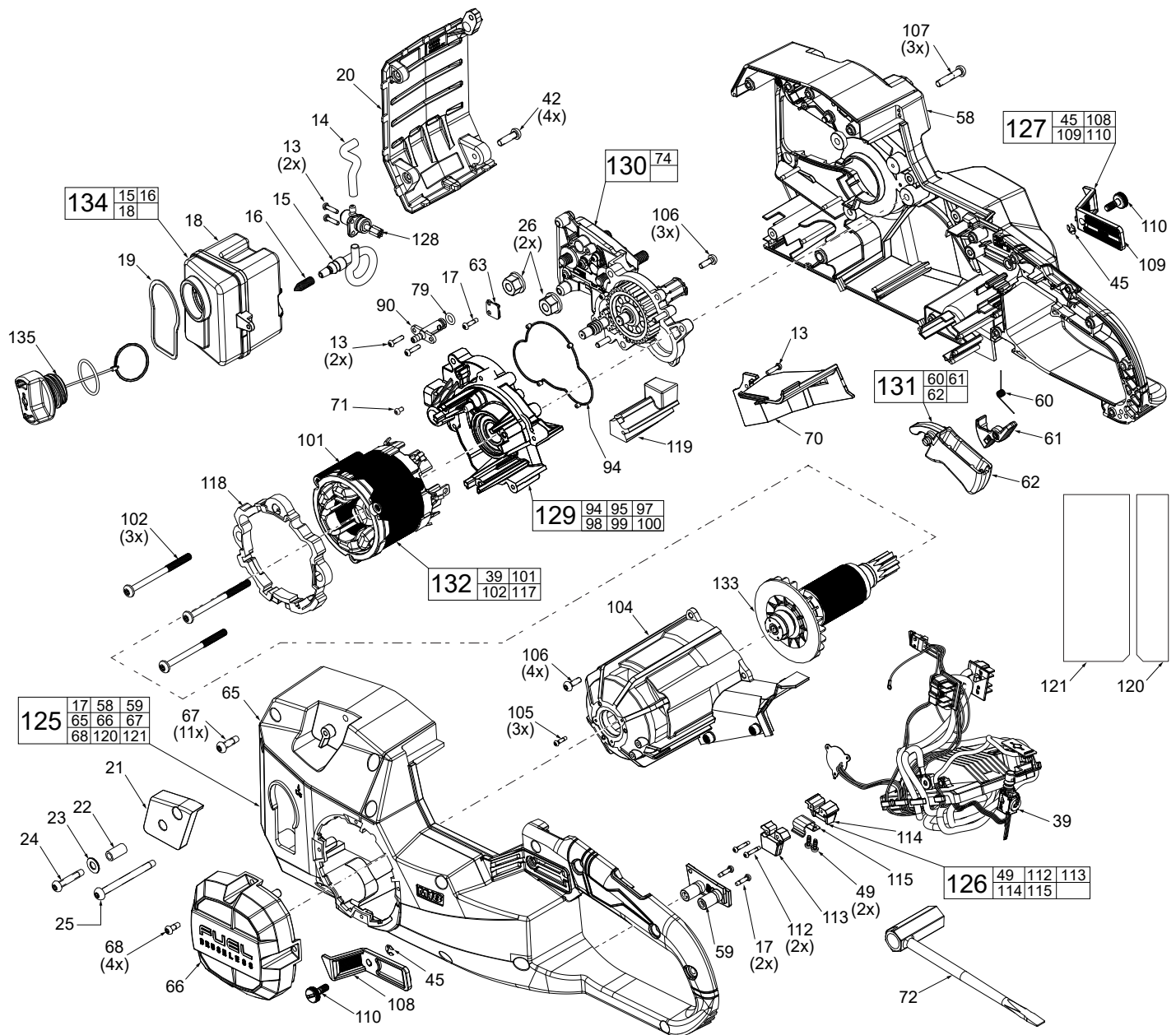


FIG.	PART NO.	DESCRIPTION OF PART	NO. REQ.	FIG.	PART NO.	DESCRIPTION OF PART	NO. REQ.
13	-----	M3 x 12mm PH T-10 Screw	(5)	79	34-40-1501	O-Ring	(1)
14	58-80-0400	Outlet Tube	(1)	90	42-86-0001	Connector	(1)
15	58-80-0401	Inlet Tube	(1)	94	34-40-1502	Gasket	(1)
16	40-50-1002	Cone Spring	(1)	101	-----	Stator	(1)
17	06-82-1087	M3 x 12mm Self-Tapping Screw	(3)	102	-----	M5 x 63mm PH T-25 Screw	(3)
18	45-66-1000	Oil Tank Assembly	(1)	104	31-50-1403	Motor Housing	(1)
19	45-66-1001	Oil Tank Seal	(1)	105	65-62-0213	M2.6 x 10mm PH T-8 Screw	(3)
20	44-66-1001	Front Plate	(1)	106	05-81-1070	M4 x 12mm PH T-20 Screw	(7)
21	44-90-1200	Brake Paddle Cover	(1)	107	06-82-3010	M5 x 24mm PH T-25 Screw	(3)
22	44-90-1201	Brake Handle Spacer	(1)	108	-----	Mesh Pad Left	(1)
23	45-88-0327	Flat Washer	(1)	109	-----	Mesh Pad Right	(1)
24	06-82-2366	M5 x 26.5mm PH T-25 Screw	(1)	110	-----	M5 Mesh Screw Bolt	(2)
25	05-88-1365	M5 x 58mm PH T-25 Screw	(1)	112	65-62-0213	M2.6 x 14mm PH T-8 Screw	(2)
26	05-55-5001	M8 Flange Nut	(2)	113	-----	Scrench Clip Holder LH	(1)
39	-----	PCBA	(1)	114	-----	Scrench Clip Holder RH	(1)
42	05-74-0315	M5 x 17mm PH T-25 Screw	(4)	115	-----	Spring Clip	(1)
45	-----	E-Ring	(2)	118	-----	Handle Housing Foam	(1)
49	-----	M3 x 8mm PH T-10 Screw	(2)	119	-----	Motor Housing Foam	(1)
58	-----	Handle Support	(1)	120	10-22-0651	Warning Label	(1)
59	-----	Scrench Clip Plate	(1)	121	12-20-0596	Service Nameplate	(1)
60	-----	Torsion Spring	(1)	125	14-34-1200	Handle Kit	(1)
61	-----	Trigger Lockoff	(1)	126	42-70-1350	Scrench Clip Kit	(1)
62	45-72-1250	Trigger	(1)	127	42-38-0750	Mesh Pad Kit	(1)
63	43-44-0117	Gasket	(1)	128	32-40-0750	Pump Gear Assembly	(1)
65	-----	Handle Cover	(1)	129	28-14-0750	Gearcase Assembly	(1)
66	-----	Motor Cap	(1)	130	14-29-0114	Gearcase Cover Assembly	(1)
67	06-82-0029	M5 x 16mm PH T-25 Screw	(11)	131	42-42-1301	Trigger Cap Assembly	(1)
68	05-88-1220	M4 x 10mm PH T-20 Screw	(4)	132	14-20-1250	Electronic Assembly	(1)
70	45-76-1300	Air Tunnel	(1)	133	23-40-0650	Rotor Assembly	(1)
71	05-88-0928	M3 x 5mm Ground Screw	(1)	134	45-66-0700	Oil Tank Assembly	(1)
72	45-96-1200	Wrench	(1)	135	44-86-1301	Oil Cap Assembly	(1)

LUBRICATION/LOCTITE:

- = DTECH 5162 Grease
- = G30-2 Grease
- = 246T Lubrication Oil
- = 277 Loctite



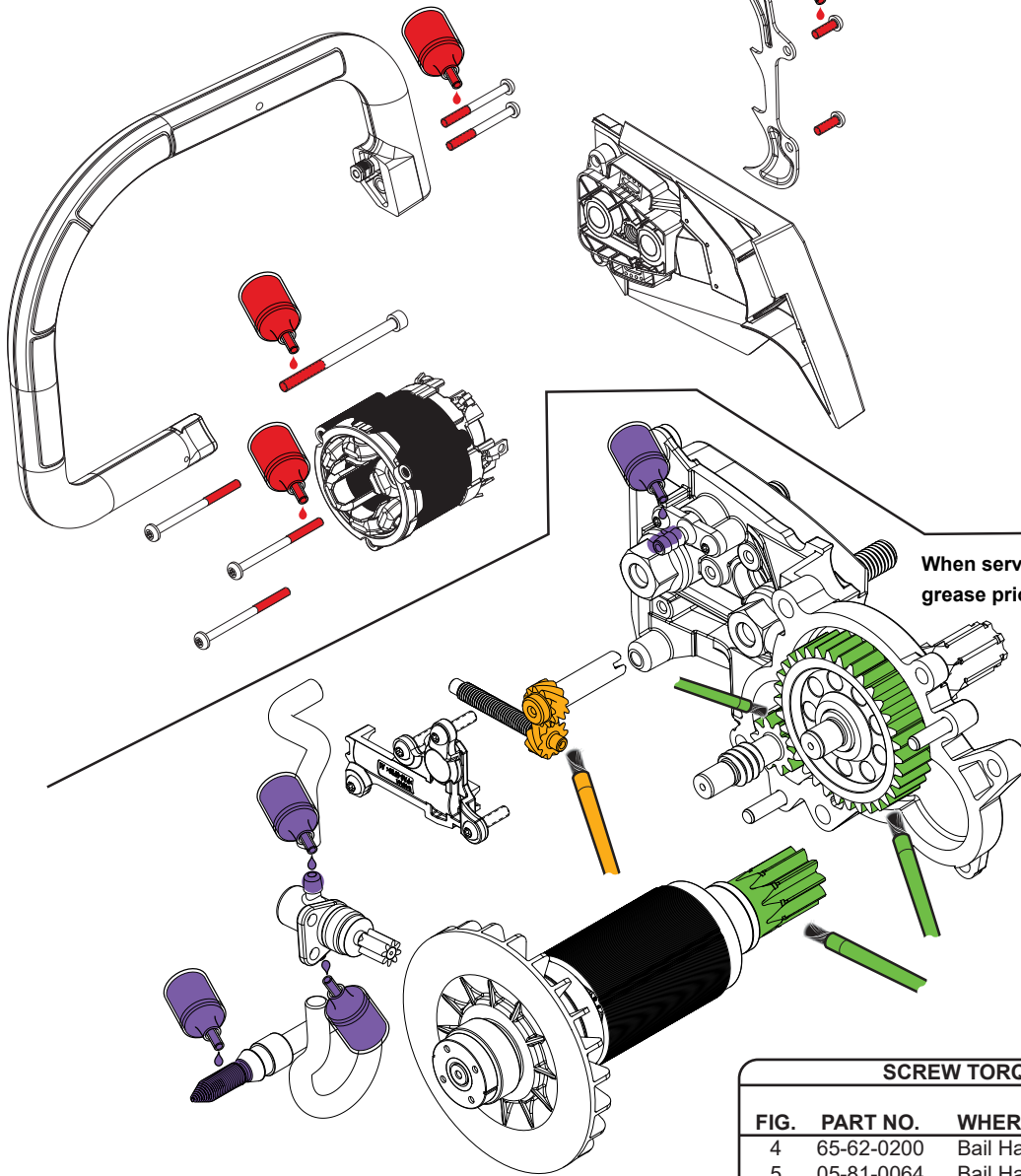
NOTE

Regarding parts to receive thread locking sealant:
Place one to two drops of the recommended Loctite® thread locking sealant (or the equivalent) to the threads of parts shown prior to installation.



NOTE

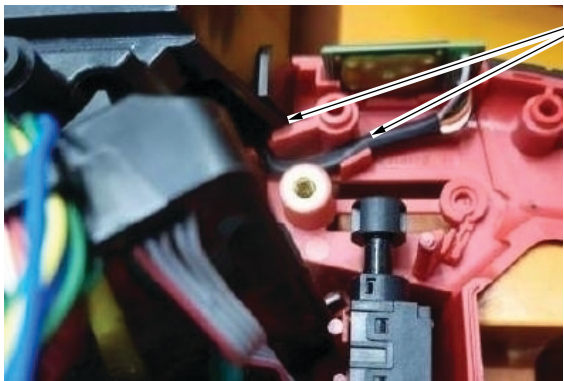
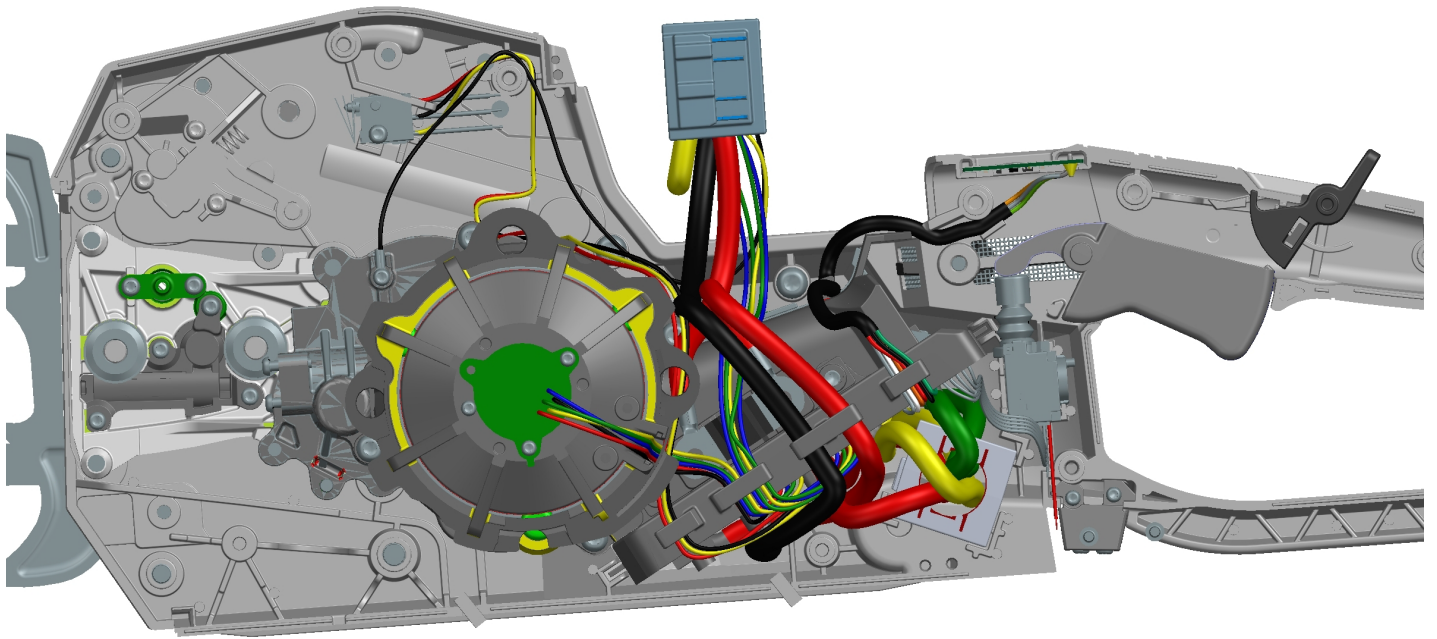
Regarding parts to be lubricated:
Apply a light coating of grease to all highlighted parts shown prior to installation. Reference the key above for grease types.



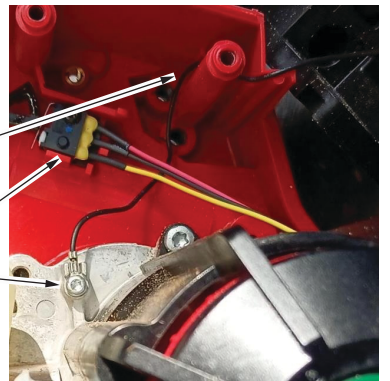
When servicing, remove 90-95% of the existing grease prior to installing new.

SCREW TORQUE SPECIFICATIONS

FIG.	PART NO.	WHERE USED	SEAT TORQUE	
			(kgf-cm)	(lb-in)
4	65-62-0200	Bail Handle	20±2	17±2
5	05-81-0064	Bail Handle	50±5	43±4
13	-----	Pump Gear	5±1	4±1
17	06-82-1087	Scrench Clip Plate	5±1	4±1
24	06-82-2366	Brake Paddle Cover	20±2	17±2
25	05-88-1365	Brake Paddle Cover	32±3	28±3
26	05-55-5001	Gearcase Cover	280±28	243±24
28	65-62-0206	Spur Bracket	32±3	28±3
42	05-74-0315	Front Plate	25±2	21±2
49	-----	Spring Clip	5±1	4±1
67	06-82-0029	Handle Cover	25±3	21±3
68	05-88-1220	Motor Cap	10±1	9±1
69	65-62-0211	Brake Cover	15±2	13±2
93	-----	Sprocket Cover	148±15	128±13
102	-----	Electronics Assembly	65±6	56±5
105	65-62-0213	PCBA	6±1	5±1
106	05-81-1070	Gearcase Cover	32±3	28±3
107	06-82-3010	Handle Support	40±4	35±4
110	-----	Mesh Pad	10±1	9±1
112	65-62-0213	Scrench Clip Holder	6±1	5±1
116	-----	Battery Interface	19±2	17±2



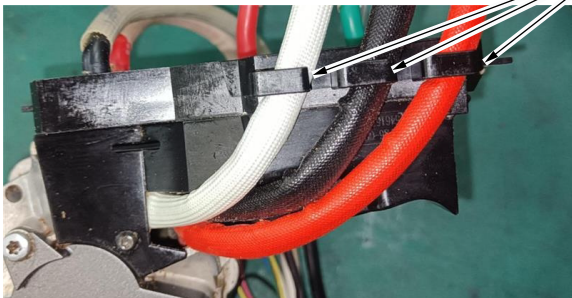
Place Mode Select wires completely in bottom of wire traps.



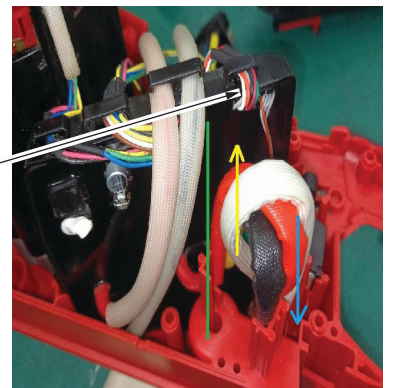
Ground wire should round the boss.

Zippy switch

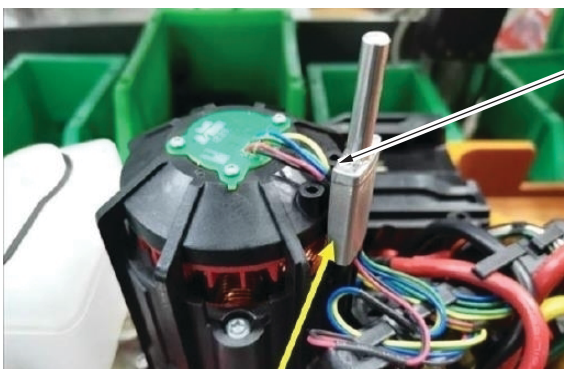
Ground wire



Clamp wires in slots of the potting boat.



B+B- wires should be routed away from white, red and black wires.



Hall Board wires should be inside Motor Housing slot.