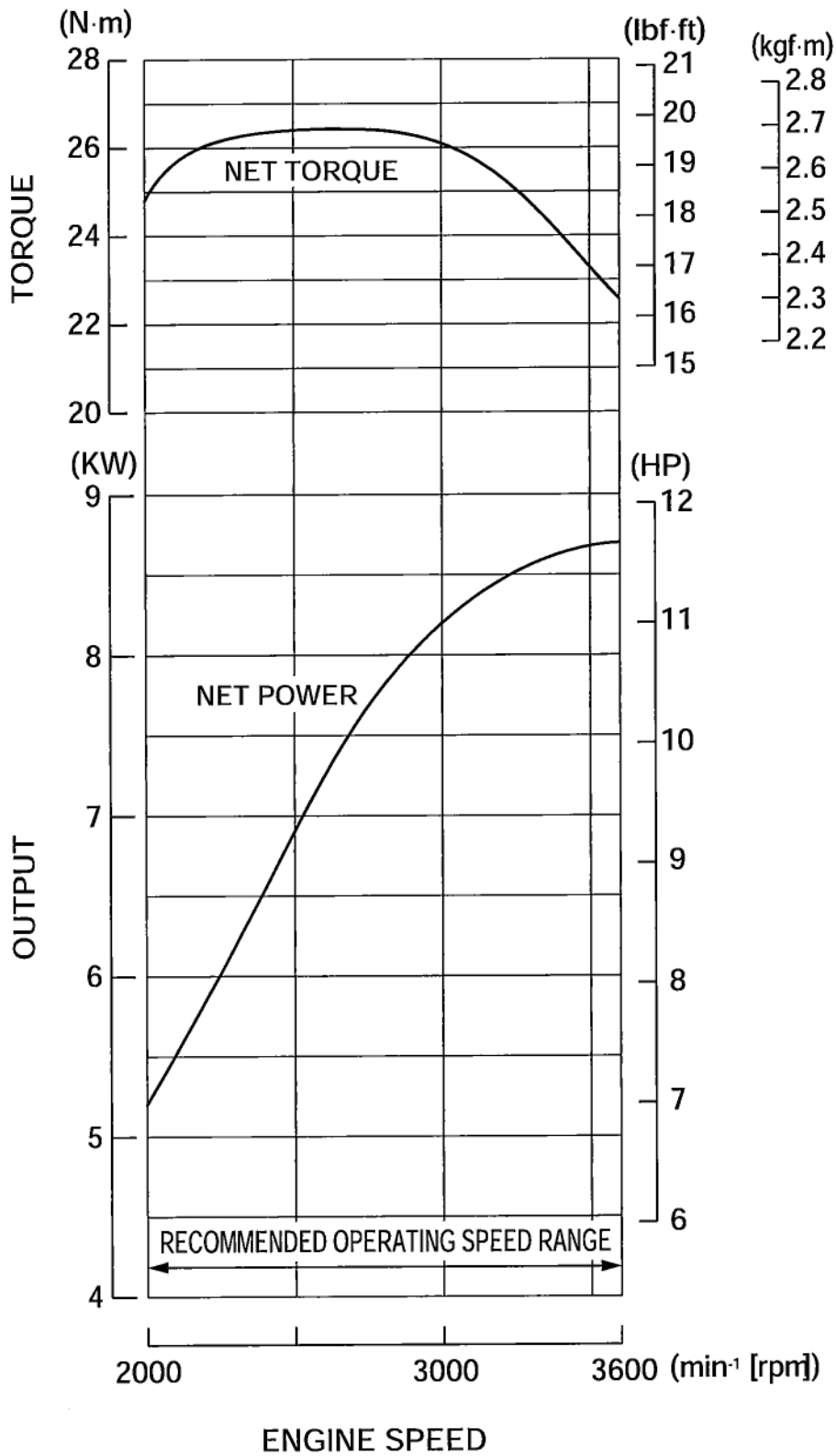


SPECIFICATIONS

GX390

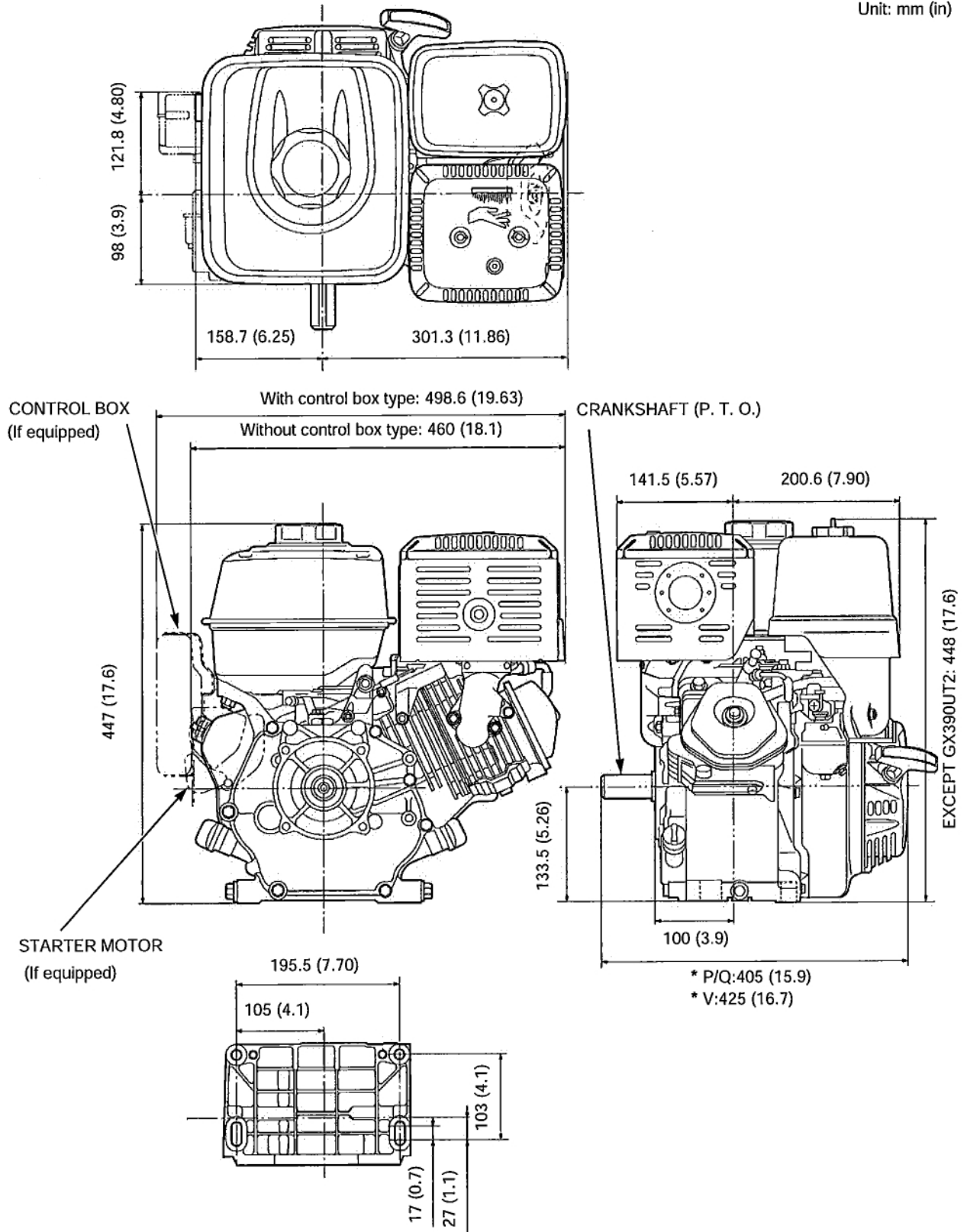


SPECIFICATIONS

GX390

WITHOUT REDUCTION TYPE

Unit: mm (in)

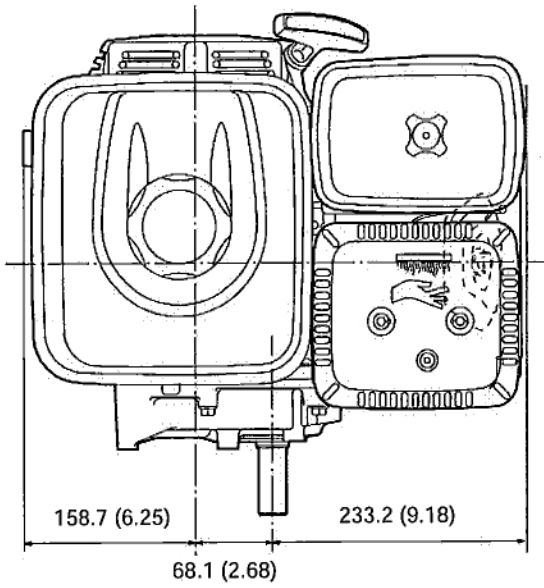


SPECIFICATIONS

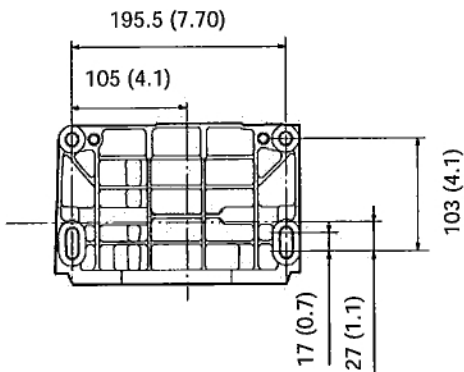
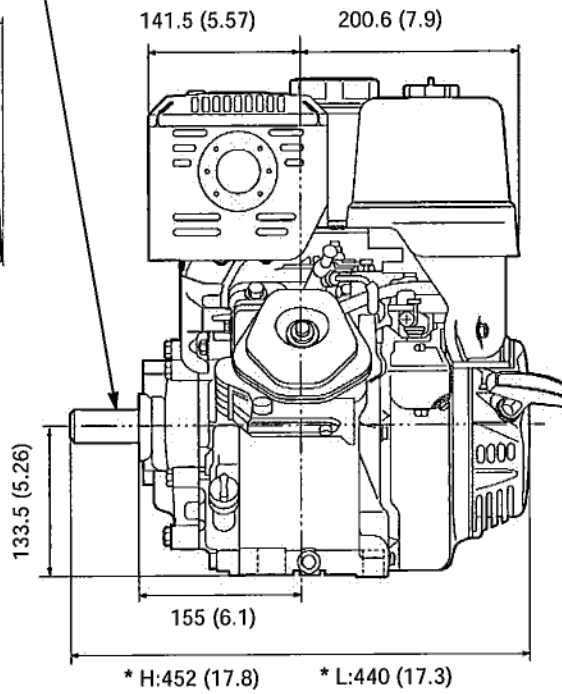
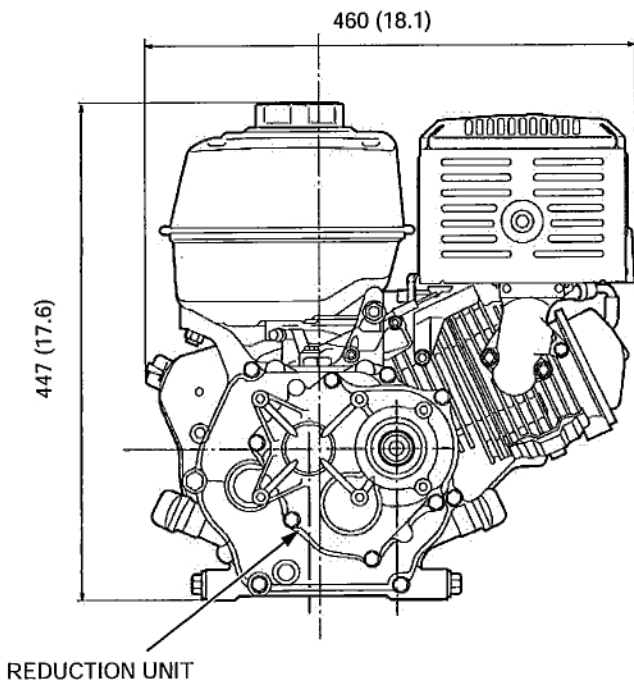
GX390

WITH REDUCTION UNIT TYPE

Unit: mm (in)



P. T. O. SHAFT



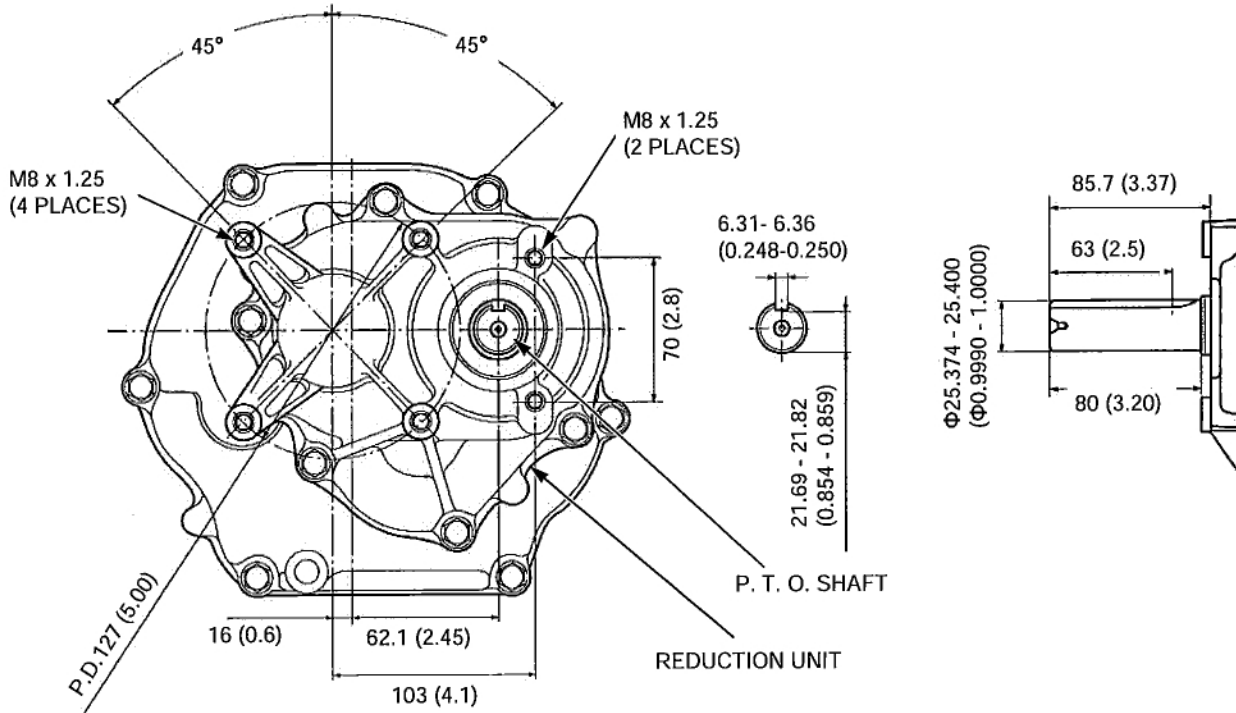
SPECIFICATIONS

GX390

*: P.T.O. type

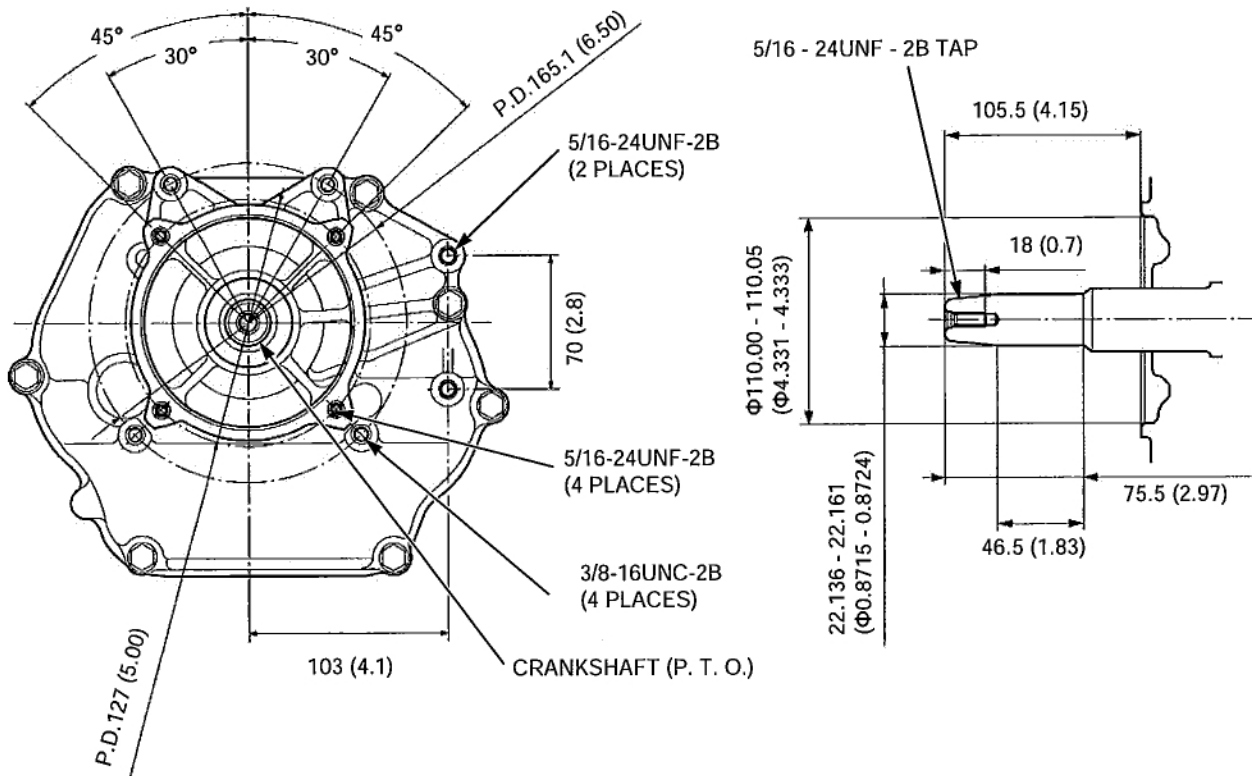
H TYPE (WITHOUT REDUCTION)

Unit: mm (in)



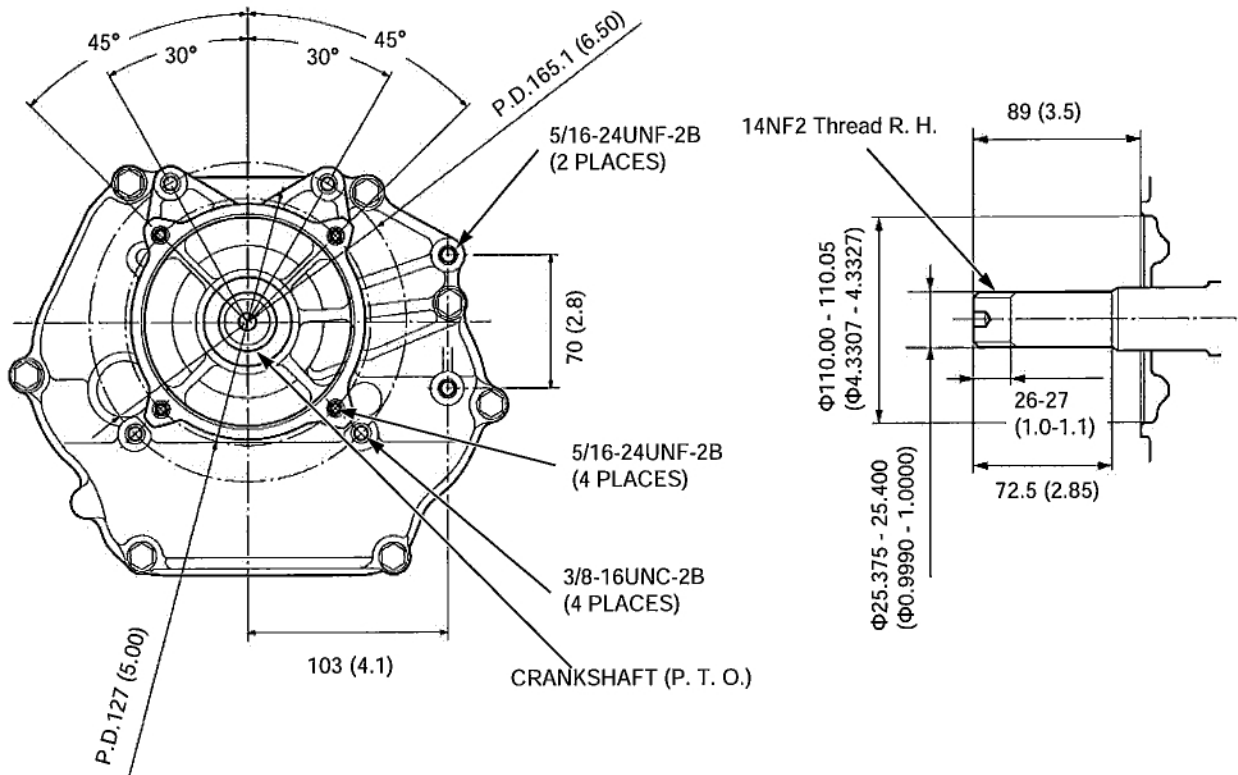
V TYPE*

Unit: mm (in)



P TYPE*

Unit: mm (in)



Q TYPE*

Unit: mm (in)

