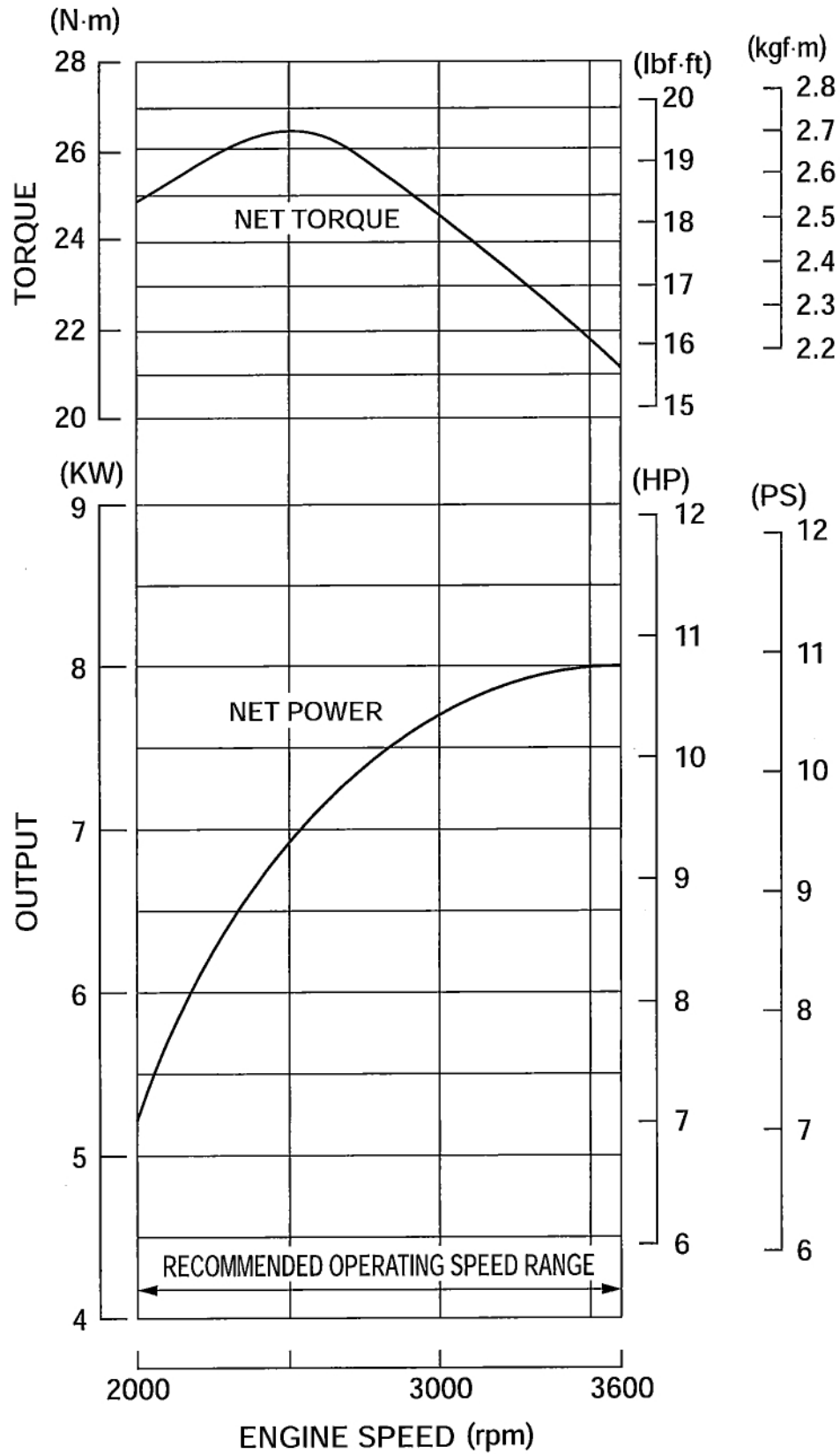


GX340

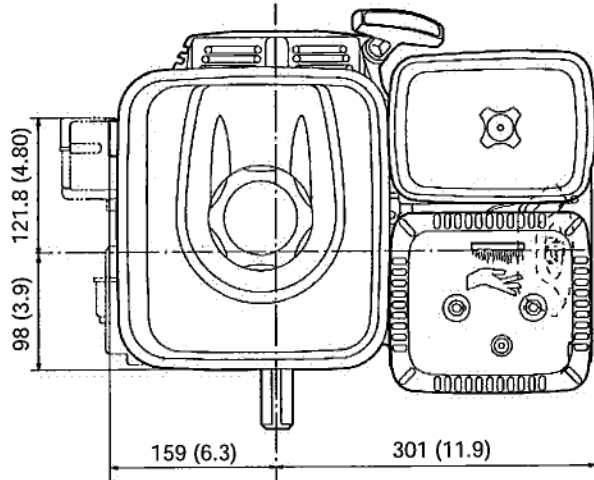


SPECIFICATIONS

GX340

WITHOUT REDUCTION UNIT TYPE

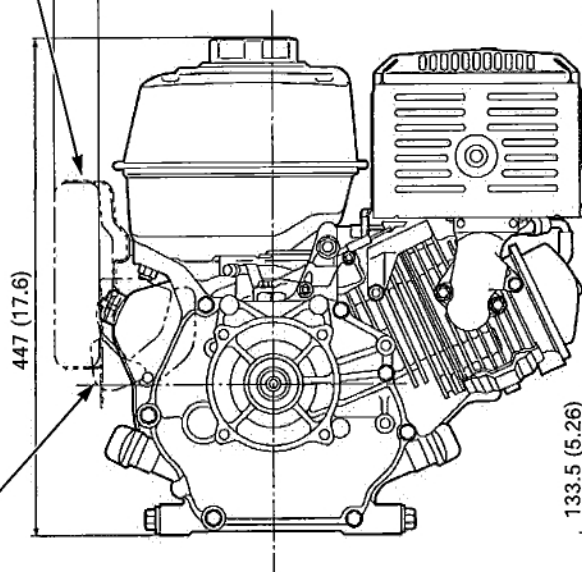
Unit: mm (in)



CONTROL BOX
(If equipped)

With control box type: 499 (19.6)

Without control box type: 460 (18.1)



STARTER MOTOR
(If equipped)

CRANKSHAFT (P. T. O.)

141.5 (5.57)

201.0 (7.91)

133.5 (5.26)

100 (3.9)

GX340R2/RT2: 313 (12.3)
GX340U2/UT2: 448 (17.6)

195.5 (7.70)

105 (4.1)

103 (4.1)

17 (0.7)

27 (1.1)

* P/Q: 405 (15.9)

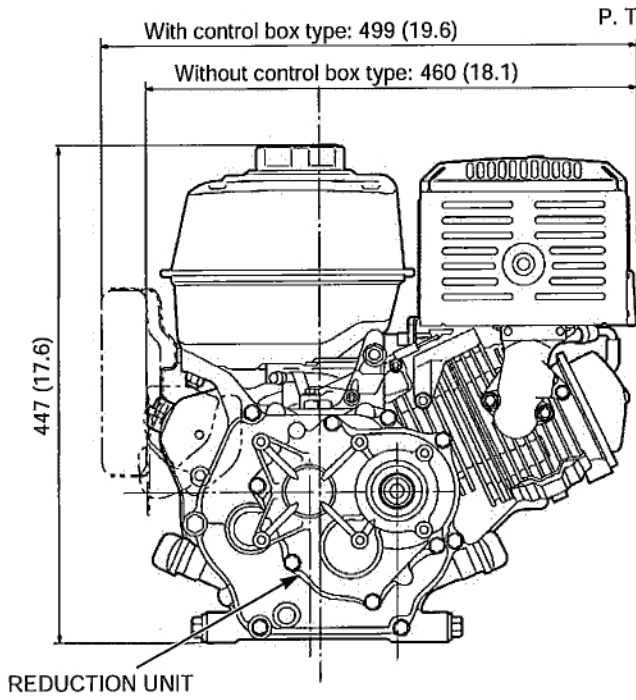
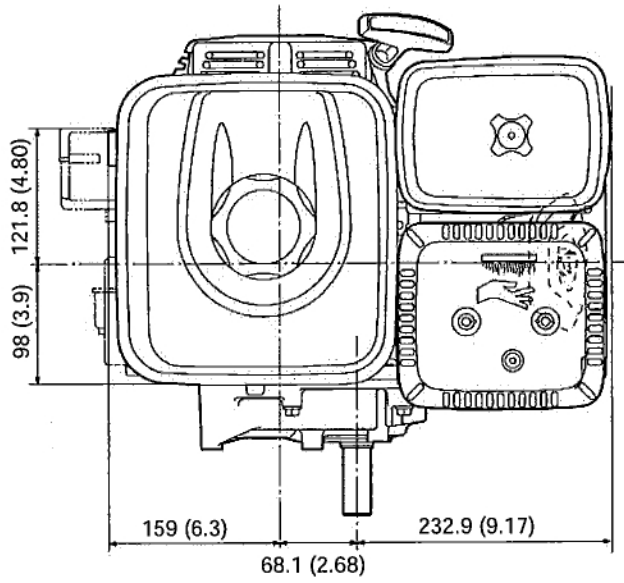
GX340UT2 * V: 425 (16.7)

SPECIFICATIONS

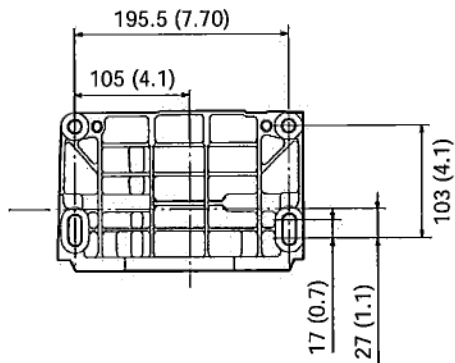
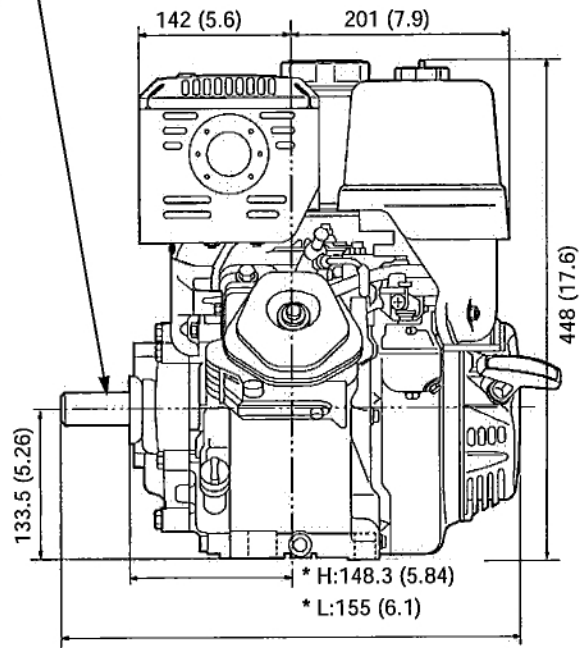
GX340

WITH REDUCTION TYPE

Unit: mm (in)



P. T. O. SHAFT



* H:452 (17.8)

* L:440 (17.3)

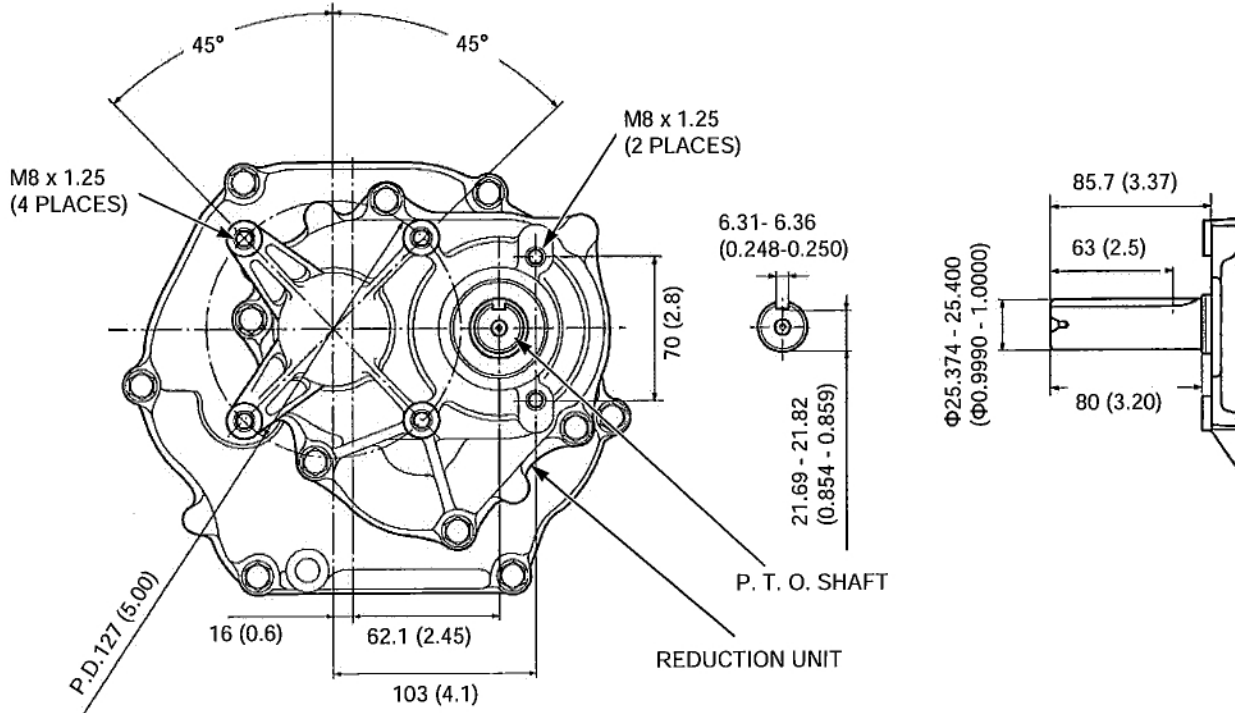
SPECIFICATIONS

GX340

*: P.T.O. type

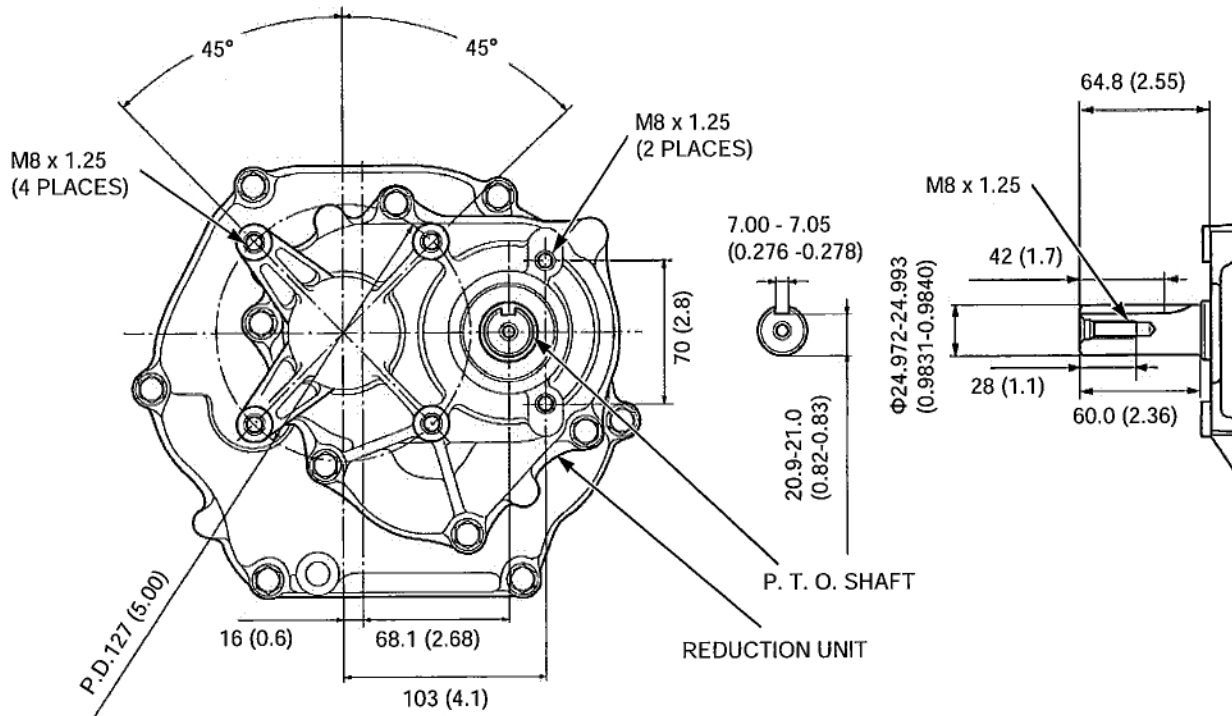
H TYPE (WITHOUT REDUCTION)

Unit: mm (in)



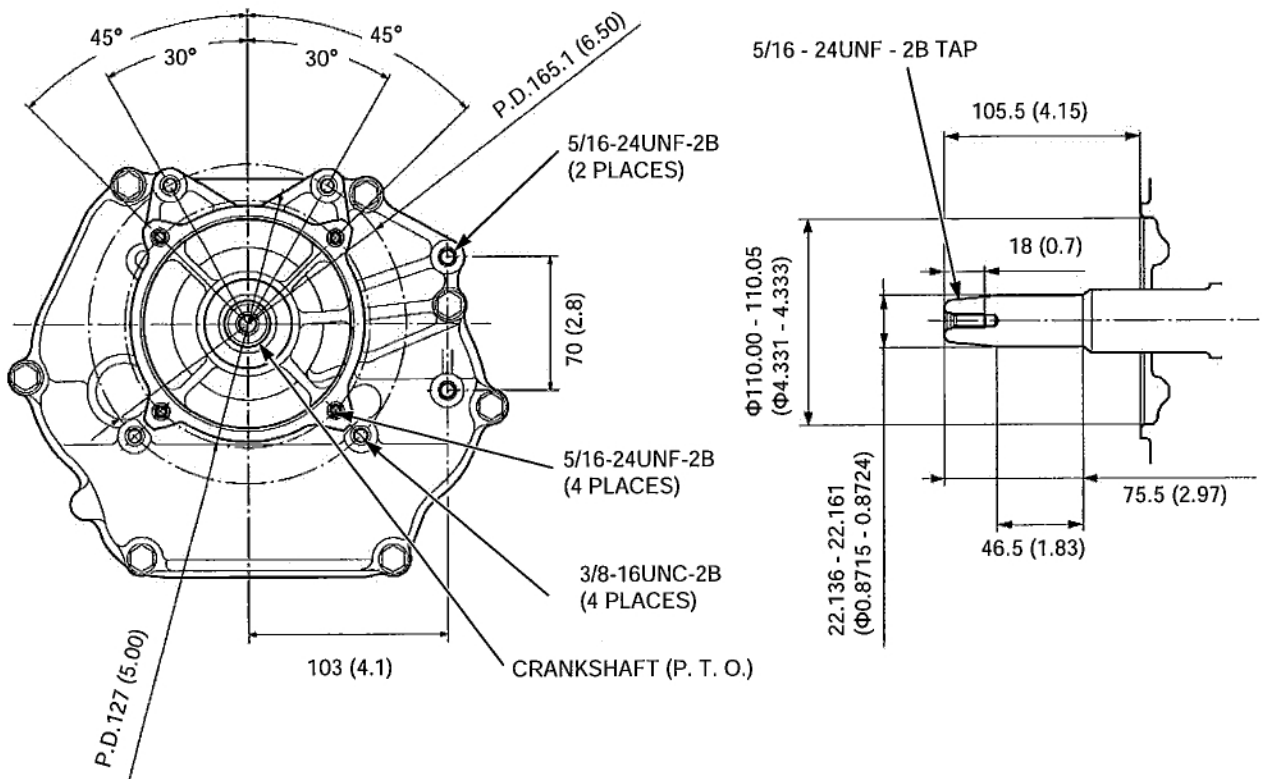
L TYPE* (WITH REDUCTION)

Unit: mm (in)



V TYPE*

Unit: mm (in)



Q TYPE*

Unit: mm (in)

