

# ironton™

## HVLP PAINT+ STAIN SPRAYER

Owner's Manual



**WARNING:** Read carefully and understand all ASSEMBLY AND OPERATION INSTRUCTIONS before operating. Failure to follow the safety rules and other basic safety precautions may result in serious personal injury.

Item # 6012619

**READ & SAVE THESE INSTRUCTIONS**

Thank you very much for choosing an Ironton™ product!

For future reference, please complete the owner's record below:

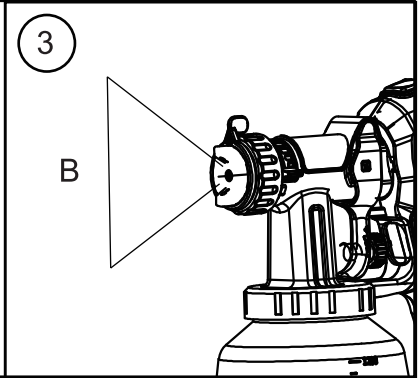
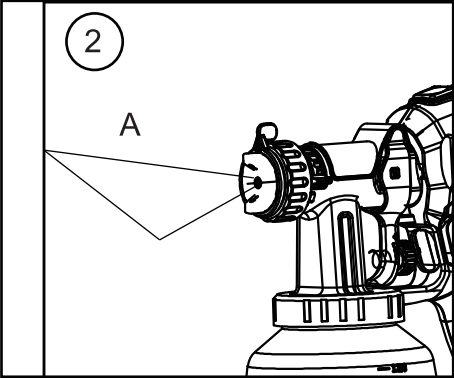
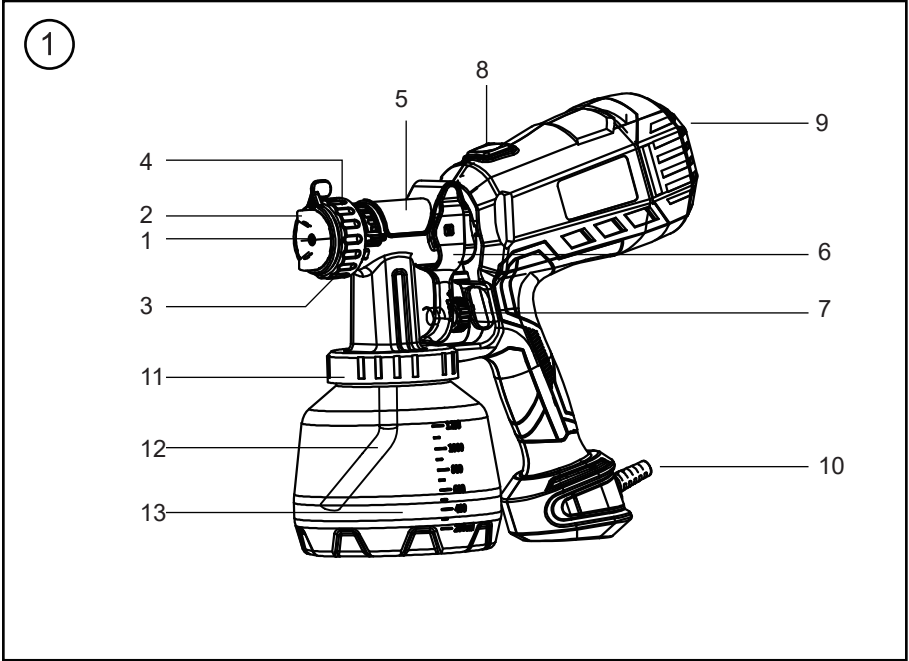
Serial Number/Lot Date Code: \_\_\_\_\_

Purchase Date: \_\_\_\_\_

Save the receipt, warranty, and this manual. It is important that you read the entire manual to become familiar with this product before you begin using it.

Hvlp Paint + Stain Sprayer designed for certain applications only. Northern Tool and Equipment is not responsible for issues arising from modification or improper use of this product such as an application for which it was not designed. We strongly recommend that this product not be modified and/or used for any application other than that for which it was designed.

For technical questions, please call **1-866-915-8626**.



## 1. EXPLANATORY DIAGRAM(FIG.1)

POS. DESIGNATION

1. Nozzle
2. Air cap
3. Spray jet width adjusting lever (shaping air)
4. Union nut
5. Spray attachment complete
6. Trigger
7. Material volume regulation
8. Click & Paint catch
9. Air filter cover
10. Power cable
11. Container seal
12. Suction tube
13. Container

## 2. THE CLICK&PAINT SYSTEM

With the Click&Paint System, the front part of the sprayer (spray attachment) can be replaced quickly and easily. This enables a rapid material change without cleaning, and ensures that the right tool is available for every material and application.

### DISASSEMBLY OF THE PAINT SPRAYER

For assembly, insert the spray attachment into the main body, push the click&paint catch toward main body then turn the catch to the lock point. To remove the spray attachment, press the catch, remove the spray attachment from the main body.

## 3. TECHNICAL DATA

Voltage:	120V/60Hz
Power consumption:	5.5A
Container volume:	1200ml
Maximum pressure:	>18KPa
Maximum spraying volume	1,200ml/min

## 4. SAFETY REGULATIONS

### All local safety regulations in force must be observed.

Read the operating instructions carefully and follow the instructions laid down in them in order to avoid risks.

#### 1. Safety at the workplace

- a) Keep your workplace clean and well lit. Disorder or unlit workplaces may result in accidents.
- b) Never use the tool in hazardous areas that contain flammable liquids, gases or dusts. Power tools generate sparks that can ignite the dust or vapors.
- c) Keep children and other persons away when using the power tool. You can lose control of the tool if you are distracted.

#### 2. Electrical Safety

- a) The tool plug must fit into the socket. The plug may not be modified in any form. Do not use adaptor plugs together with protective-grounded tools. unmodified plugs and suitable sockets reduce the risk of an electric shock.
- b) Avoid physical contact with grounded surfaces such as pipes, heating elements, stoves and refrigerators. The risk through electric shock increases if you are grounded.
- c) Keep the equipment away from rain and moisture. The risk of an electric shock increases if water penetrates electrical equipment.
- d) Do not misuse the mains cord by carrying the tool by the cord, hanging it from the cord or by pulling on the cord to remove the plug. Keep the cord away from heat, oil, sharp edges or moving tool parts. Damaged or twisted cords increase the risk of electric shock.
- e) If you work outdoors with a power tool, only use extension cables suitable for outdoor use. The use of an extension cord that is suitable for outdoors reduces the risk of an electric shock.
- f) If you cannot avoid using the tool in a damp environment, use a residual current operated circuit breaker. Using a residual current operated circuit-breaker avoids the risk of electric shock.

#### 3. Personal Safety

- a) Pay attention to what you are doing and work sensibly with a power tool. Do not use the tool if you are tired or under the influence of drugs, alcohol or medication. Just a moment of inattentiveness while using the tool can lead to serious injuries.
- b) Wear personal safety equipment and always wear safety goggles. Wearing personal protective equipment, such as dust mask, non-slip safety shoes, safety helmet or ear protection, depending on the type of power tools, reduces the risk of injury.
- c) Avoid accidental starting-up. Ensure that the switch is in the "OFF" position before inserting the plug into the socket. Accidents can occur if you carry the power tool while your finger is on the switch or if you connect the power tool to the power supply while it is on.
- d) Remove setting tools or wrenches before switching on the power tool. A tool or wrench that is in a rotating tool part can lead to injuries.
- e) Avoid an unnatural posture. This ensures that you can control the tool better in unexpected situations.
- f) Wear suitable clothing. Do not wear wide clothing or jewellery. Keep your hair, clothes and gloves away from moving parts. Loose clothing, jewellery or long hair can be caught in moving parts.
- g) This appliance is not intended for use by persons (including children) with reduced physical, sensory or mental capabilities, or lack of experience and knowledge, unless they have been given supervision or instruction concerning use of the appliance by a person responsible for their safety. Children should be supervised to ensure that they do not play with the appliance.

#### 4. Careful Handling and Use of Power Tools

- a) Do not overload the tool. Use the power tool designed for the work that you are doing. You work better and safer in the specified performance range if you use the suitable power tool.
- b) Do not use power tools if the switch is defective. A power tool that cannot be switched on or off is dangerous and has to be repaired.
- c) Remove the plug from the socket before changing accessories or putting the tool away. This precautionary measure prevents unintentional starting of the tool.
- d) Store unused power tools so that they are inaccessible to children. Do not let persons use the tool who are not familiar with it or who have not read these instructions. Power tools are dangerous when they are used by inexperienced persons.
- e) Take proper care of your tools. Check whether the moving parts function trouble-free and do not jam, whether parts are broken or damaged so that the tool function is impaired. Have damaged parts repaired before using the tool. Many accidents have their origin in power tools that have been maintained badly.
- f) Use the power tool, accessories, insert tools, etc. in accordance with these instructions and in a fashion specified for this special tool type. Take the working conditions and the activity to be carried out into consideration. The use of power tools for purposes other than the intended ones can lead to dangerous situations.

## 5. Service

- a) Have your tool repaired only by qualified specialist personnel and only with original spare parts. This ensures that the tool safety is maintained.
- b) If the supply cord is damaged, it must be replaced by the manufacturer or its service agent or a similarly qualified person in order to avoid a safety hazard.

## Safety instructions for color application devices

### 1. Risks of Fire and Explosion

When spraying flammable coatings vapours from paint and solvents can cause flammable gases produced in the work area (hazard area). There is a risk of fire and explosion due to ignition sources in this danger zone. The electrically operated spray device contains potential ignition sources (spark formation when switching the motor on and off, when inserting and removing the power plug, due to potential static electricity at the paint sprayer)

> Device must not be used at operating sites that fall under the explosion protection ordinance.

> Do not use combustible coating substances and cleaning agents

-> Always seal paint or solvent containers tightly in the vicinity of the device.

-> When cleaning devices with flammable solvents, disconnect the device from the mains and clean thoroughly with a brush and cloth. Before starting the device up again, ensure that all traces of solvents are removed thoroughly. Allow the cleaned parts to dry completely.

**2. Warning: Danger of injury! Never point paint sprayer at yourself, other persons or animals.**

3. When spraying paint, wear a suitable respirator. The user should be supplied with a breathing mask. In order to avoid occupational diseases, the working instructions provided by the manufacturer of the materials, solvents and cleaning agents used must be complied with during preparation, working with and cleaning the equipment. Protective clothing, gloves and, if necessary, protective skin cream is required to protect the skin.

**4. Warning: When working with the paint spraying system both indoors and outdoors, ensure that no solvent-based vapours can form within the area of the paint spraying system. When working in closed places a sufficient ventilation must be ensured to remove the solvent vapours.**

**5. Warning: The device is not splash proof. It should not be used, neither outdoors in the rain nor be sprayed with water nor immersed in liquid. Do not use the device in damp or wet environments.**

6. Do not lay the filled paint sprayer down.

7. Extraction systems should be installed on-site according to the local regulations.

8. The object to be coated must be grounded.

9. Caution against dangers that can arise from the sprayed substance and observe the text and information on the containers or the specifications given by the substance manufacturer.

10. Do not spray any liquid of unknown hazard potential.

11. Before dismantling the spray attachment, relieve pressure by opening the container.

**12. Before working on the device, remove the power plug from the socket.**

13. Work or repairs on the electrical equipment should only be carried out by a professional electrician, even if there are instructions regarding such work in the operating instructions. No liability will be accepted for improper installation.

## 5 INTRODUCTION TO SPRAYING USING THE HVLP PROCEDURE

HVLP(High Volume Low Pressure) is a low pressure spraying technique, which works with a high volume of air and a low air pressure. The greatest advantage of this spraying technique is the low paint mist formation. This reduces the amount required to cover the object to a minimum. As opposed to conventional application of coatings, this method achieves a highly economical and perfect surface quality and is, at the same time, environmentally friendly.

### Function description

The paint spraying system consists of a motor-operated turbo-blower, which provides the paint sprayer with atomisation air. In the paint sprayer, a part of the atomisation air is used to pressurise the conlainer. This pressure causes the coating material to be fed through the uptake pipe to the nozzle where it is atomised by the rest of the atomisation air. All settings necessary for operation (e.g. material volume)can be conveniently made, directly on the paint sprayer.

## 6 COATING MATERIAL

### 6.1 COATING MATERIALS SUITABLE FOR USE .

Solvent-based and water-soluble lacquer paints Mordants, glazes, impregnations, oils, clear vamishes, synthetic enamels, coloured paints, alkyd resin varnishes, primers, radiator paints. hammer effect enameks. anti-rust, special effects paints, textured paints.

### 6.2 COATING MATERIALS NOT SUITABLE FOR USE

Materials that contain highly abrasive components. facade paint, caustic solutions and acidic coating substances. Flammable materials.

### 6.3 COATING MATERIALS THAT CAN ONLY BE PROCESSED WITH RELEVANT SPRAY ATTACHMENT(Accessories)

Interior wall paint (dispersions and latex paint)

### 6.4 PREPARING THE COATING MATERIAL



Observe the manufacturer's instructions for the use of the coating material on the paint tin or on the technical instruction sheet.

### Coating material purity:

An absolute pre-condition for the trouble-free operation of the fine spray system is that the coating material is uncontaminated. If you have doubts as to the purity of the coating material, we recommend that you first filter it through a fine sieve.

Processing the coating material with the Spray attachment

Coating Material	Processing	Comments
Solvent-based lacquer paints	observe manufacturer's instructions	
Water-soluble lacquer paints	observe manufacturer's instructions	

## 7 SETTING THE PAINT SPRAYER

### 7.1 SETTING THE REQUIRED SPRAY PATTERN



Attention:Never pull trigger while adjusting the air cap settings.

The alignment of the spray jet can be determined by turning the air cap.

A horizontal flat jet → for vertical surfaces

B vertical flat jet → for horizontal surfaces

It is also possible to switch between a wide and a compact spray jet with the adjusting lever.

### 7.2 SETTING THE AMOUNT OF MATERIAL

The material volume can be adjusted incrementally by turning the material volume control.

### 7.3 ALIGN THE FEED TUBE

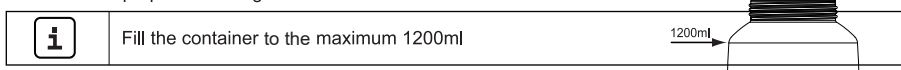
If the feed tube is positioned correctly, the container contents can be sprayed without almost any residue. When working on lying objects: Turn the feed tube forwards.

Spraying work when working on overhead objects: Turn the feed tube rearwards.

## 8 STARTING OPERATION

Before connecting to the main supply make sure that the mains voltage corresponds to the operating voltage on the rating plate. The unit must be connected with a properly grounded shock proof socket.

1. Unscrew the container from the spray attachment.
2. Pour in the prepared coating material.



3. Align the feed tube.
4. Screw the container firmly onto the spray attachment.
5. Connect spray attachment .
6. Plug in the power cable.
7. The device is now ready for operation.

## 9 SPRAYING TECHNIQUE

	The machine has a trigger with 2 pressure points The turbine is started via the first pressure point. The trigger is pressed further, the material is transported.
--	--

Operate trigger on the paint sprayer.

Test spray a piece of cardboard to ensure correct setting of the spray pattern, spray jet width, material and air volume. Hold the paint sprayer upright and maintain a constant distance of about 3 - 20 cm to the object being sprayed.

Move the paint sprayer evenly either from side to side or up and down. If the paint sprayer is moved evenly, it will produce an even surface finish.

Always start spraying away from the object and avoid stopping spraying while still on the object. In case of excessive paint mist formation, adjust the air and material flow respectively and alter distance from the object.

## 10 BREAKS IN WORK

1. Unplug the power plug.
2. During longer breaks, vent the container by briefly opening and then closing it again.
3. Clean nozzle openings after an interruption in operation.

	In using quick-drying or two component coating materials, do not fail to rinse unit through with a suitable cleaning agent during the processing period.
--	--

## 11 TRANSPORTATION

	ATTENTION! Full containers have to be closed tightly when transported in the case. Do not lie the case on its side if it contains full containers of paint.
--	---

## 12 TAKING OUT OF OPERATION AND CLEANING

	In order to ensure smooth operations, the machine has to be cleaned thoroughly every day.
--	---

1. Disassemble the paint sprayer. Press the click&paint catch and twist it to the unlock point. Take the spray attachment off.

	ATTENTION! Never hold the paint sprayer rear part under water or immerse it into liquids. Clean the housing only with a moistened cloth.
--	--

2. Unscrew the container. Empty the remaining coating material into the original container.
3. Pre-clean the container and feed lube using a brush and suitable cleaning agent. Clean the ventilating bore.
4. Fill the container with a non-flammable water. Screw the container back on.

**Do not spray flammable materials for cleaning purpose**

	When cleaning devices with flammable solvents, disconnect the device from the mains and clean thoroughly with a brush and cloth. Before starting the device up again, ensure that all traces of solvents are removed thoroughly. Allow the cleaned parts to dry completely.
--	---

5. Connect spray attachment and main body.
6. Pull the trigger to rinse the spray attachment. Repeat the above procedure until the solvent or water emerging from the nozzle is clear.
7. Turn off the machine and disassemble the sprayer.
8. Screw off the container and empty it. Unscrew feed tube with container seal.
9. Clean feed tube and suction nozzle in spray attachment with cleaning brush.



**CAUTION!** Never clean seals, diaphragm and nozzle or air holes of the paint sprayer with metal objects. The ventilation hose and diaphragm are only solvent-resistant to a limited extent. Do not immerse in solvent, only wipe.

10. Unscrew the union nut from spray attachment, remove the spray jet width adjusting lever carefully from the union nut. Remove air cap and nozzle. Thoroughly clean all parts.



Take special care when cleaning the interstices on the needle

11. Clean the outside of the container with a cloth soaked in solvent or water.
12. Assemble the parts again (see "Assembly").

### 12.1 ASSEMBLY



**ATTENTION!** Follow the steps described below exactly for assembly. Otherwise the spray attachment may be damaged.

1. Place nozzle on the needle with recess downwards. (pay attention to bulges in the nozzle).
2. Place air cap on nozzle.
3. Put the spray jet width adjusting lever into the union nut. Make sure that the recess on the union nut is engaged in the spray jet width adjusting lever.
4. Screw on union nut.
5. Place the container seal from below on the feed tube and slide it over the collar, while turing the container seal slightly.
6. Screw the feed tube with the container seal into the body of the sprayer.



In order to mount the sprayer more easily apply lubricating grease liberally to the O-ring at the spray attachment.

## 13.MAINTENANCE

### 13.1 AIR FILTER



**Attention!** Never operate the device with the air filter soiled or missing, as dirt could be sucked up and affect the operation of the device. Always check the air filter before starting work.

1. Unplug the power plug.
2. Pull out the air filter cover and air filter.
3. Clean (blow out) or replace the filter depending on the degree of soiling.
4. Push the clean air filter in and reattach the cover of the air filter compartment and screw.

### 13.2 AIR RELIEF VALVE



if paint has entered the ventilation hose, proceed as follows:

1. Screw off the container, unscrew feed tube with container seal.
2. Pull out the diaphragm from the ventilation hose. Clean all the parts carefully.



**CAUTION!** The ventilation hose and diaphragm are only solvent-resistant to a limited extent. Do not immerse in solvent, only wipe.

3. Replace the diaphragm into the ventilation hose.
4. Assemble the container seal, feed tube and container again.

## 14.CORRECTION OF MALFUNCTIONS

MALFUNCTION	Problem	Solution
The unit will not start	<ul style="list-style-type: none"> <li>●No mains voltage</li> </ul>	<ul style="list-style-type: none"> <li>●Check</li> </ul>
No coating material emerges from the nozzle	<ul style="list-style-type: none"> <li>●Nozzle clogged</li> <li>●Material volume setting too low</li> <li>●Paint container seal damaged</li> <li>●No pressure build-up in container</li> <li>●Container empty</li> <li>●Feed tube loose</li> <li>●Feed tube clogged</li> <li>●Air vent on feed tube blocked</li> <li>●Diaphragm stuck</li> </ul>	<ul style="list-style-type: none"> <li>●Clean</li> <li>●Increase volume</li> <li>●Replace</li> <li>●Tighten container</li> <li>●Refill</li> <li>●Insert</li> <li>●Clean</li> <li>●Clean</li> <li>●Remove and clean</li> </ul>
Coating material drips from the nozzle	<ul style="list-style-type: none"> <li>●Air cap, nozzle or needle soiled</li> <li>●Spray attachment incorrectly assembled</li> <li>●Nozzle loose</li> <li>●Needle worn out</li> </ul>	<ul style="list-style-type: none"> <li>●Clean</li> <li>●Assemble correctly</li> <li>●Tighten Union nut</li> <li>●Use new spray attachment</li> </ul>
Atomisation too coarse	<ul style="list-style-type: none"> <li>●Material volume too large</li> <li>●Nozzle contaminated</li> <li>●Viscosity of coating material too high</li> <li>●Too little pressure build-up in container</li> <li>●Air filter heavily soiled</li> <li>●Amount of air too low</li> </ul>	<ul style="list-style-type: none"> <li>●Reduce volume</li> <li>●Clean</li> <li>●Dilute further</li> <li>●Tighten container</li> <li>●Change</li> <li>●Increase volume</li> </ul>
Spray jet pulsates	<ul style="list-style-type: none"> <li>●Coating material in container running out</li> <li>●Air filter heavily soiled</li> <li>●Feed tube loose</li> <li>●Feed tube</li> </ul>	<ul style="list-style-type: none"> <li>●Refill</li> <li>●Change</li> <li>●Insert</li> <li>●Clean</li> </ul>
The material runs down the object being painted	<ul style="list-style-type: none"> <li>●Too much coating material applied</li> <li>●Distance too small</li> </ul>	<ul style="list-style-type: none"> <li>●Reduce volume</li> <li>●Increase distance</li> </ul>
Excessive paint mist (overspray)	<ul style="list-style-type: none"> <li>●Distance to the object too large</li> <li>●Too much coating material applied</li> <li>●Amount of air too high</li> <li>●Coating substance over-diluted</li> <li>●Incorrect spraying technique</li> </ul>	<ul style="list-style-type: none"> <li>●Reduce distance</li> <li>●Reduce volume</li> <li>●Reduce volume</li> <li>●Reduce degree of dilution</li> <li>●See information about the correct spraying technique</li> </ul>
Paint in the ventilating hose	<ul style="list-style-type: none"> <li>●Diaphragm soiled</li> <li>●Diaphragm defective</li> </ul>	<ul style="list-style-type: none"> <li>●Clean the diaphragm</li> <li>●Replace the diaphragm</li> </ul>

## 15. PARTS LIST

### PLEASE READ THE FOLLOWING CAREFULLY

THE MANUFACTURER AND/OR DISTRIBUTOR HAS PROVIDED THE PARTS LIST AND ASSEMBLY DIAGRAM IN THIS MANUAL AS A REFERENCE TOOL ONLY. NEITHER THE MANUFACTURER OR DISTRIBUTOR MAKES ANY REPRESENTATION OR WARRANTY OF ANY KIND TO THE BUYER THAT HE OR SHE IS QUALIFIED TO MAKE ANY REPAIRS TO THE PRODUCT, OR THAT HE OR SHE IS QUALIFIED TO REPLACE ANY PARTS OF THE PRODUCT. IN FACT, THE MANUFACTURER AND/OR DISTRIBUTOR EXPRESSLY STATES THAT ALL REPAIRS AND PARTS REPLACEMENTS SHOULD BE UNDERTAKEN BY CERTIFIED AND LICENSED TECHNICIANS, AND NOT BY THE BUYER. THE BUYER ASSUMES ALL RISK AND LIABILITY ARISING OUT OF HIS OR HER REPAIRS TO THE ORIGINAL PRODUCT OR REPLACEMENT PARTS THERETO, OR ARISING OUT OF HIS OR HER INSTALLATION OF REPLACEMENT PARTS THERETO.

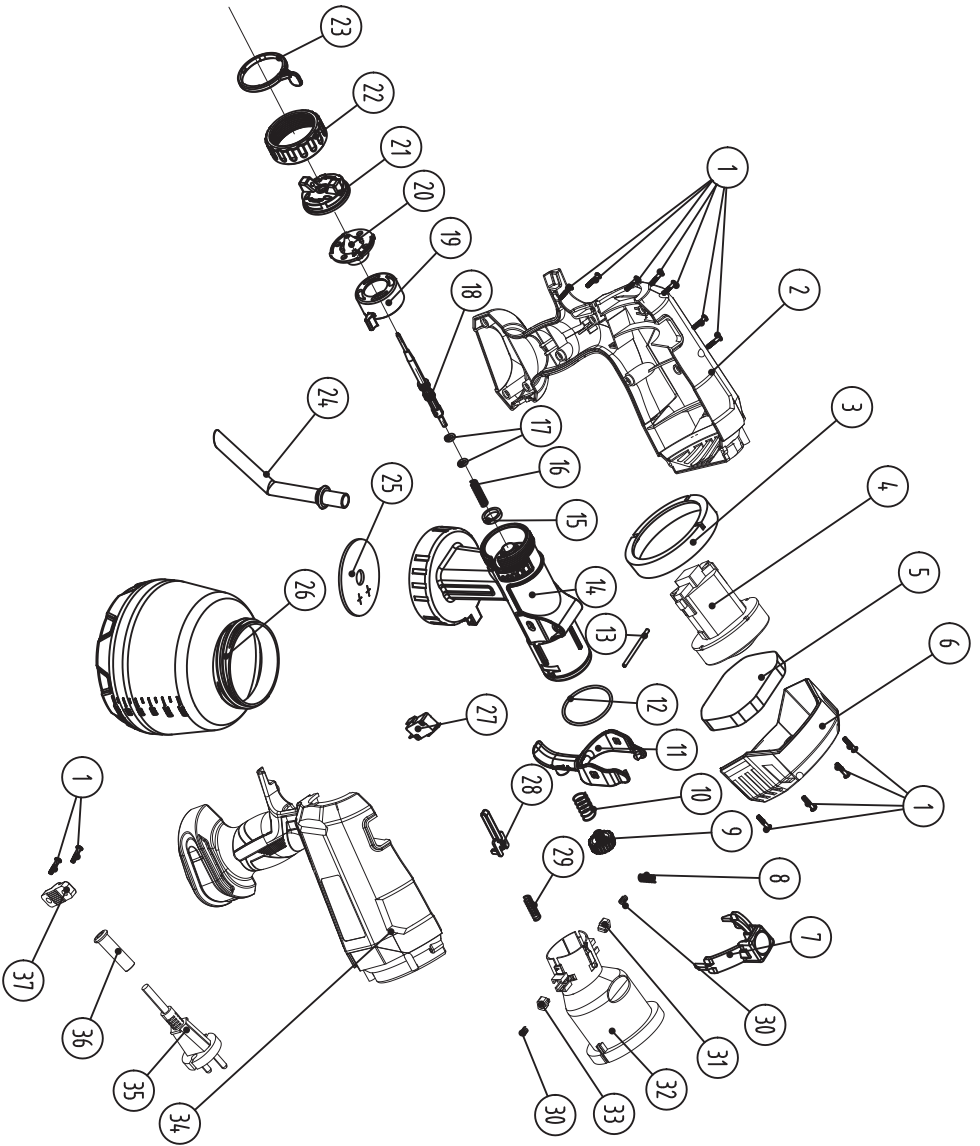
No.	Item	Qty	No.	Item	Qty
1	Screw	17	20	Nozzle	1
2	Right Housing	1	21	Spray Head	1
3	Seal Ring	1	22	Union Nut	1
4	Motor	1	23	Spray Head Wrench	1
5	Strainer Pad	1	24	Pick Up Tube	1
6	Rear Cover	1	25	Washer	1
7	Clip	1	26	Paint Pot	1
8	Coil Spring	1	27	Micro Switch	1
9	Knob	1	28	Switch Push Rod	1
10	Coil Spring	1	29	Coil Spring	1
11	Wrench	1	30	Coil Spring	1
12	O-ring Seal	1	31	Right Locking Block	1
13	Round Pin	1	32	Motor Cover	1
14	Gun	1	33	Left Locking Block	1
15	O-ring Seal	1	34	Left Housing	1
16	Coil Spring	1	35	Plug And Cable	1
17	O-ring Seal	2	36	Cable Sheath	1
18	Thimble	1	37	Cable Platen	1
19	Spray Regulator	1			

**Record Product's Serial Number Here:** \_\_\_\_\_

**Note:** If product has no serial number, record month and year of purchase instead.

**Note:** Some parts are listed and shown for illustration purposes only, and are not available individually as replacement parts.

# 16. SCHEMATIC DRAWING



## **17. REPLACEMENT PARTS**

- For replacement parts and technical questions, please call Customer Service at **1-866-915-8626**.
- Not all product components are available for replacement. The illustrations provided are a convenient reference to the location and position of parts in the assembly sequence.
- When ordering parts, the following information will be required: item description, item model number, item serial number/item lot date code, and the replacement part reference number.
- The distributor reserves the rights to make design changes and improvements to product lines and manuals without notice.

## **18. LIMITED WARRANTY**

Northern Tool and Equipment Company, Inc. ("We" or "Us") warrants to the original purchaser only ("You" or "Your") that the Ironton product purchased will be free from material defects in both materials and workmanship, normal wear and tear excepted, for a period of **one year** from date of purchase. The foregoing warranty is valid only if the installation and use of the product is strictly in accordance with product instructions. There are no other warranties, express or implied, including the warranty of merchantability or fitness for a particular purpose. If the product does not comply with this limited warranty, Your sole and exclusive remedy is that We will, at our sole option and within a commercially reasonable time, either replace the product or product component without charge to You or refund the purchase price (less shipping). This limited warranty is not transferable.

### **Limitations on the Warranty**

This limited warranty does not cover: (a) normal wear and tear; (b) damage through abuse, neglect, misuse, or as a result of any accident or in any other manner; (c) damage from misapplication, overloading, or improper installation; (d) improper maintenance and repair; and (e) product alteration in any manner by anyone other than Us, with the sole exception of alterations made pursuant to product instructions and in a workmanlike manner.

### **Obligations of Purchaser**

You must retain Your product purchase receipt to verify date of purchase and that You are the original purchaser. To make a warranty claim, contact Us at 1-866-915-8626, identify the product by make and model number, and follow the claim instructions that will be provided. The product and the purchase receipt must be provided to Us in order to process Your warranty claim. Any returned product that is replaced or refunded by Us becomes our property. You will be responsible for return shipping costs or costs related to Your return visit to a retail store.

### **Remedy Limits**

Product replacement or a refund of the purchase price is Your sole remedy under this limited warranty or any other warranty related to the product. We shall not be liable for: service or labor charges or damage to Your property incurred in removing or replacing the product; any damages, including, without limitation, damages to tangible personal property or personal injury, related to Your improper use, installation, or maintenance of the product or product component; or any indirect, incidental or consequential damages of any kind for any reason.

### **Assumption of Risk**

You acknowledge and agree that any use of the product for any purpose other than the specified use(s) stated in the product instructions is at Your own risk.

### **Governing Law**

This limited warranty gives You specific legal rights, and You also may have other rights which vary from state to state. Some states do not allow limitations or exclusions on implied warranties or incidental or consequential damages, so the above limitations may not apply to You. This limited warranty is governed by the laws of the State of Minnesota, without regard to rules pertaining to conflicts of law. The state courts located in Dakota County, Minnesota shall have exclusive jurisdiction for any disputes relating to this warranty.

**iron ton**<sup>TM</sup>

Distributed by:

Northern Tool & Equipment Company, Inc.

Burnsville, Minnesota 55306

[www.northerntool.com](http://www.northerntool.com)

Made in China