

Emergency KIT for emptying or preventing floods

 Domestic use



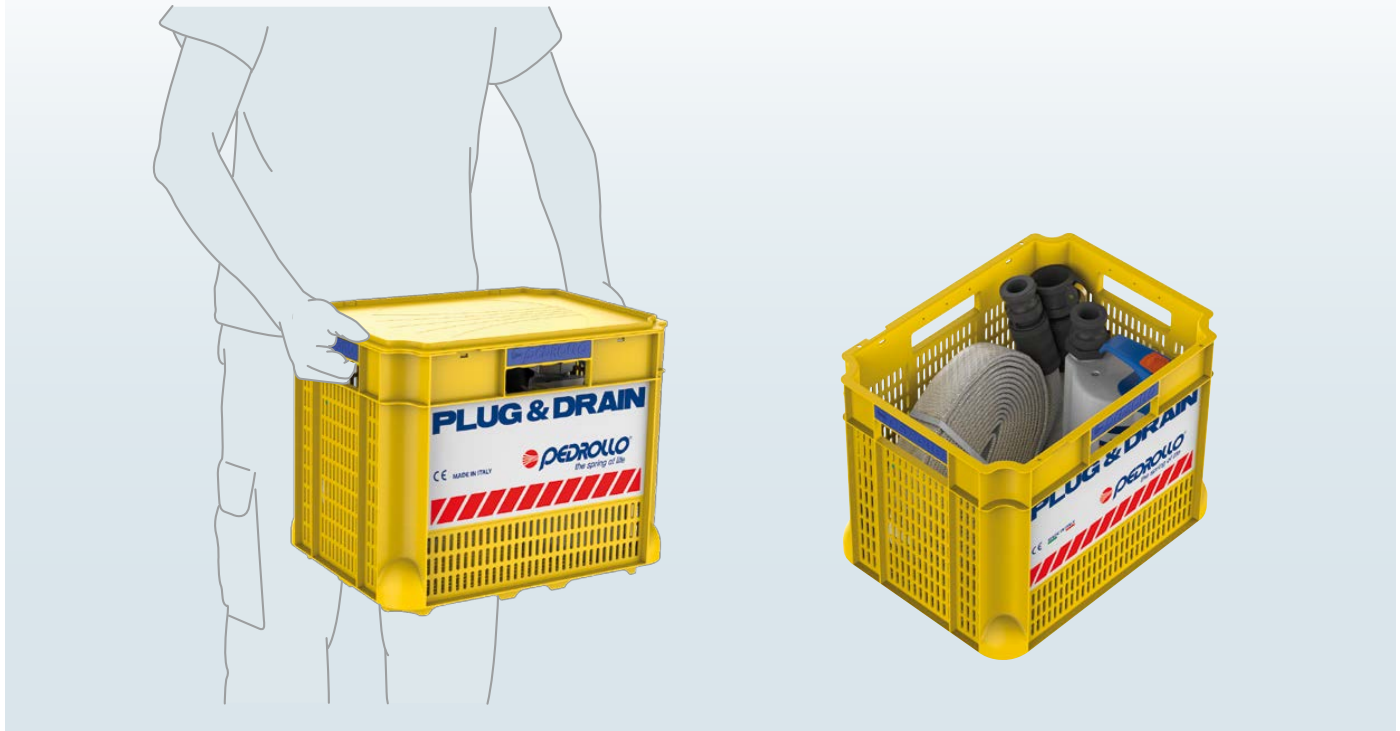
PLUG & DRAIN is the indispensable and practical emergency kit for tackling flooding in garages, cellars and basements with efficacy and speed.

Thanks to the versatile drainage pump and the **49 feet long PVC hose** it is possible to swiftly drain the flooded area, if necessary using the plastic crate as a filter.

With **PLUG & DRAIN** you can completely drain the area affected by flooding: the pump can in fact suck up water down to a level of only 2 mm from the bottom.

With **PLUG & DRAIN** you have everything you require ready for use:

- Pump with a ready-fitted connector, a 33 feet long power cable and an external float switch;
- PVC hose with a rapid connector;
- Crate-filter to prevent possible bulky residues blocking water drainage.



COMPONENTS

SUBMERSIBLE TOP2-FLOOR PUMP

- Single-phase **115V or 230 V - 60 Hz**
- Thermal overload protector incorporated in the winding
- **33 feet** power cable
- External float switch
- **"CAMLOCK"** rapid connection
- Performance:
 - **H max= 29.5 feet**
 - **Q max= 42 US g.p.m.**
- Emptying level down to **2 mm** from the bottom



PVC HOSE

- **"CAMLOCK"** rapid connection
- Length of tube **49 feet**
- Diameter of tube **1¼"**



CRATE-FILTER

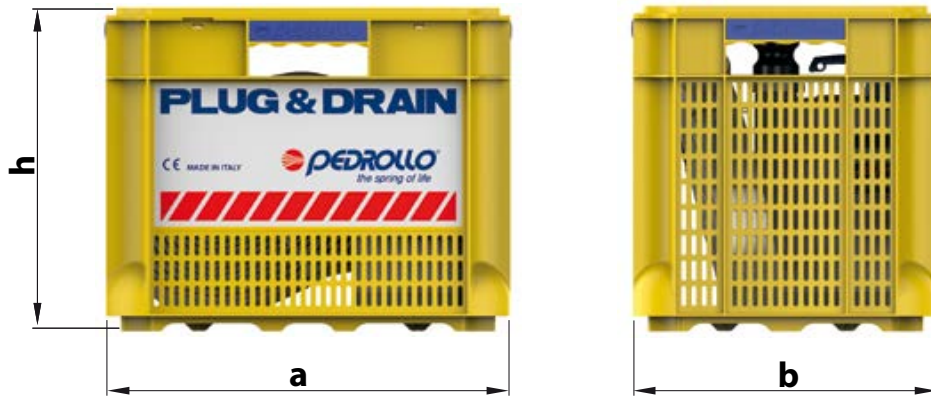
- Complete with a system for fixing the pump for a stable operation and an easy detachment for use of the pump without the crate-filter
- Complete with a lid so as to put away **PLUG & DRAIN** in order and have it always ready for use



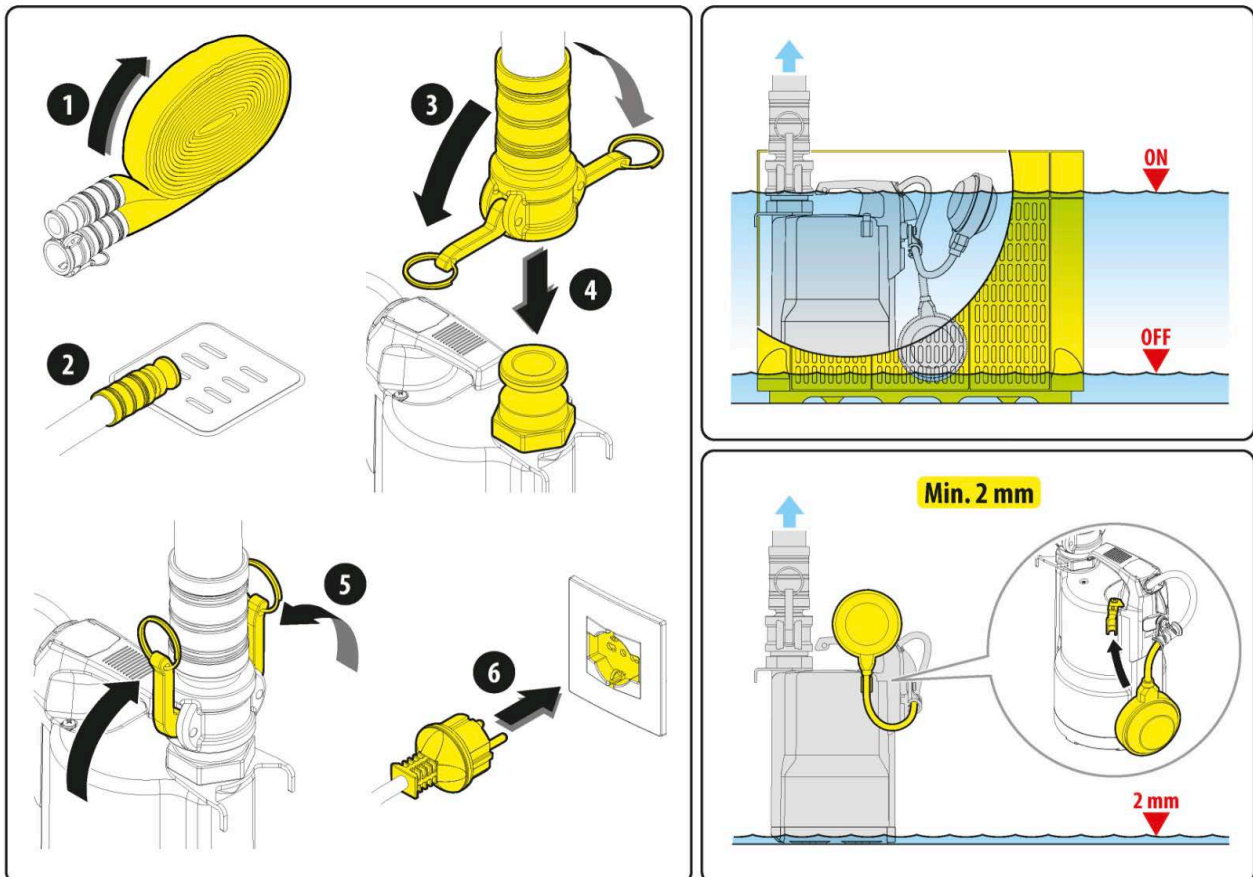
DIMENSIONS AND WEIGHTS

TYPE	DIMENSIONS			lb*
	a	b	h	
PLUG & DRAIN	15"	11.8"	12.6"	23.5

(* Overall weight: pump, hose, connectors and crate)



QUICK & EASY 6 STEP INSTALLATION



PLUG & DRAIN

INDISPENSABLE, RELIABLE, PRACTICAL



BY

 **PEDROLLO**[®]
the spring of life