

LiftGator Assembly Instructions

Read this manual all the way through before attempting assembly



To assembly a LiftGator, you will need:

- A Hammer and Pry bar
- A 1/2" wrench
- A 9/16" wrench
- A 5/8" Wrench
- A 3/4" Wrench
- A 10mm socket
- A 1/2" socket
- A 9/16" socket
- A 5/8" socket
- A 3/4" socket
- A torque wrench with a 3/4" socket
- A drill, impact driver, and cable cutters are recommended.



1. Your LiftGator will arrive crated as shown.



2. Using a pry bar and hammer, remove blocks holding pieces in place



3. Remove hardware boxes from crate



For questions call 903-577-5592



Open hardware boxes. You will have:

- Hardware bags
- safety chains
- a hitch stabilizer
- support legs
- two sets of folding links
- a set of skates



4. Remove crossmember from crate.



5. Remove upright rails from crate.



6. Remove the 4 screws on each upright frame rail which hold the cover in place, remove the covers.



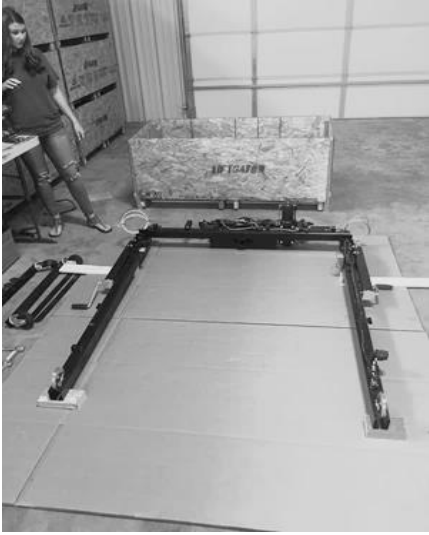
7. Remove the 4 screws on the crossmember which hold the covers in place



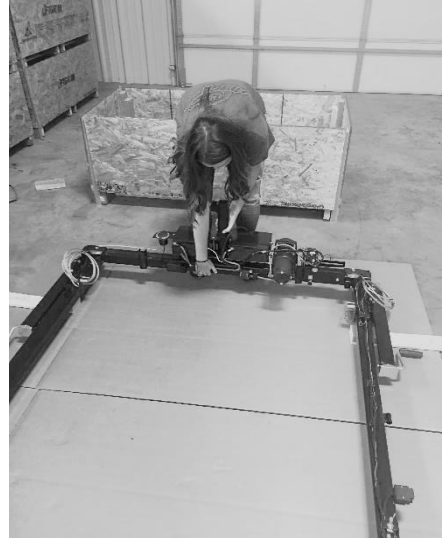
8. Remove the crossmember covers, starting with the center section



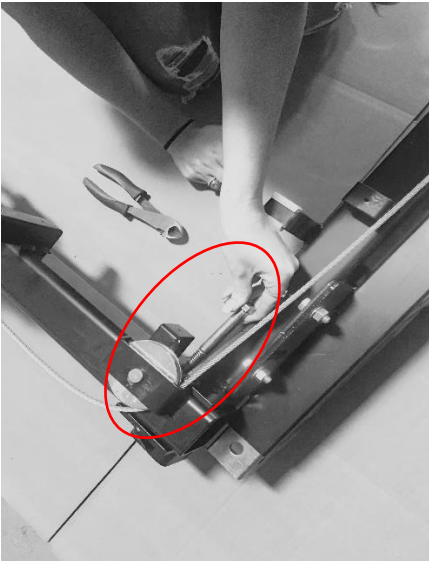
9. Place wooden blocks under both upright frame rails, making the frame rail sit flat on the floor



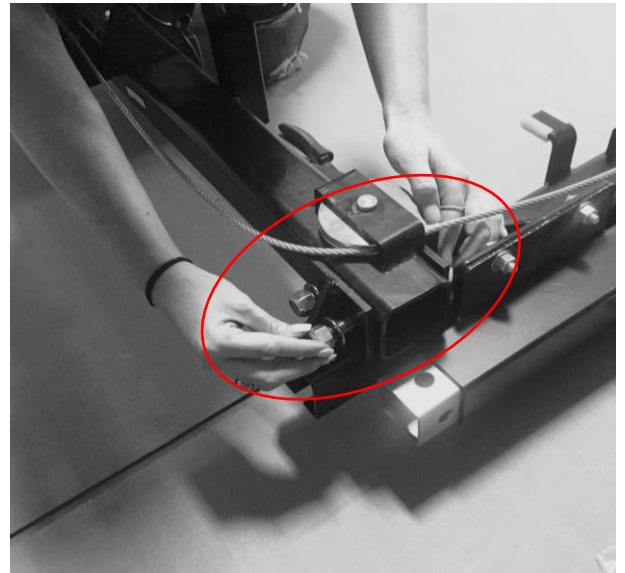
10. Layout the frame rails and crossmember in the configuration shown.



11. Lift the crossmember and lower into brackets on the upright rails.



12. Insert the $\frac{1}{2}$ " bolts into the upright brackets, coming from the top side of the crossmember.



13. Place a $\frac{1}{2}$ " washer and nut on the bottom of the bolts.



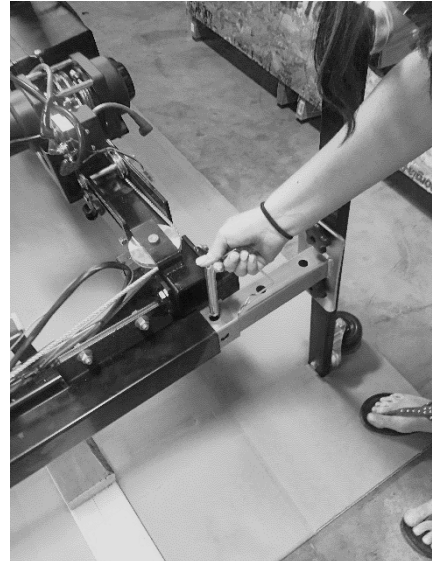
14. Tighten the nuts to 110 ft.-lbs.



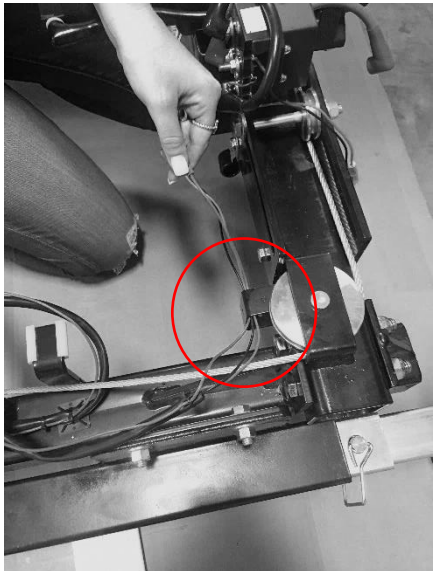
15. Place the support leg onto the skate studs and tighten the screw knobs



16. Lift the frame assembly and insert the support legs into the adjuster body.



17. Place the latch pin through the third hole of the support leg.



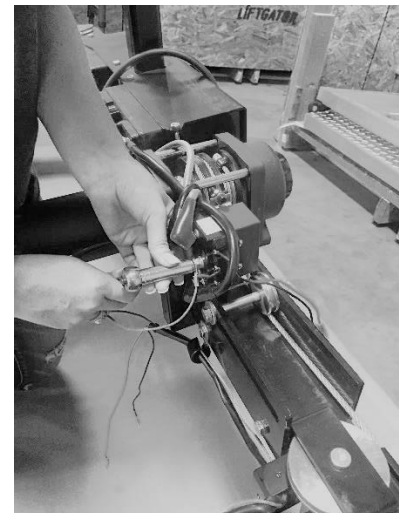
18. Feed the control switch wires through the frame mount as shown



19. Remove the nut on the solenoid stud labeled "B+"



20. Place the control switch eyelet (red wire) and the positive battery cable (red cable) on the solenoid stud labeled "B+"



21. Tighten the nut on the "B+" solenoid stud, securing the control switch eyelet and battery cable eyelet.



22. Identify the green and black control switch wires coming from the control switch harness and solenoid.



23. Insert the bullet connectors from the control switch harness to the solenoid wires. Green to Green, Black to Black.



24. Using pry bar, remove one face of crate



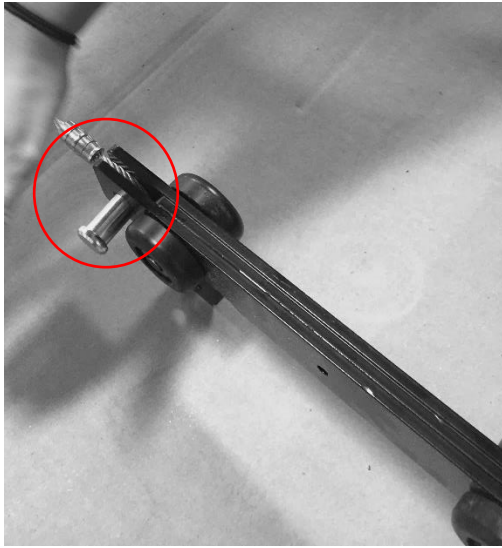
25. Remove carriers from crate



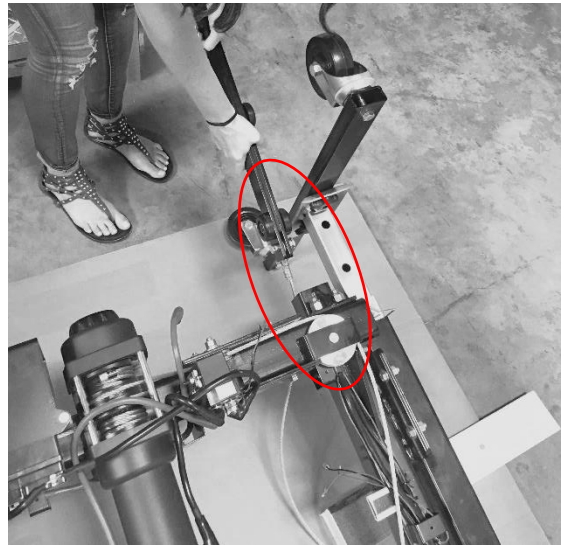
26. Route wire rope from bottom pulley towards top of upright rail.



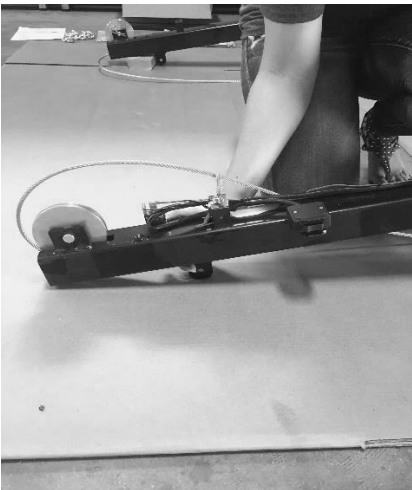
27. Route the wire rope under the crossmember and toward the bottom of the upright rails.



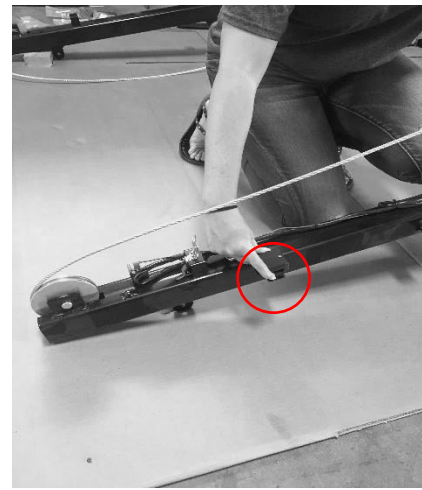
28. Insert the wire rope eyelet into the top of the carrier and insert pin through carrier



29. Insert carrier into bottom of upright rail



30. With carrier slid completely into upright rail, ensure the wire rope is seated in the top pulley. Pull carrier toward the bottom of the upright rail slightly, taking pressure off of top limit switch.



31. With wire rope seated in pulleys on both passenger and driver side upright rails, press control switch "up" to remove slack from wire ropes.



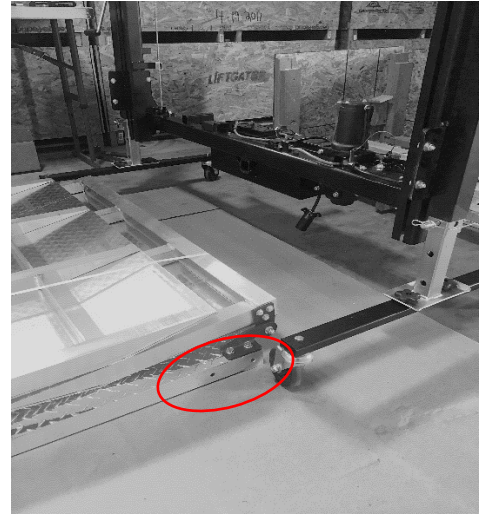
32. Ensure wires ropes are seated in all pulleys and cable sits free in bottom limit switch notch.



33. Tilt frame assembly and set frame upright.



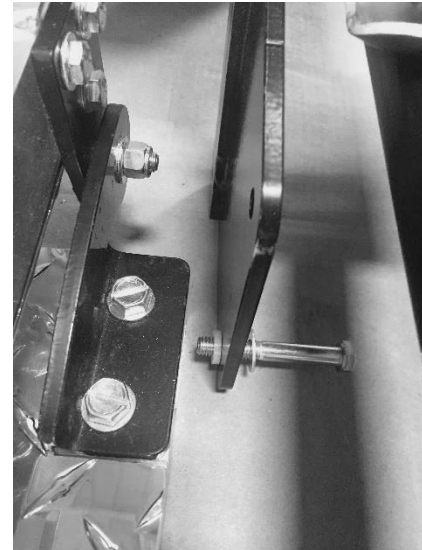
34. Remove platform from crate



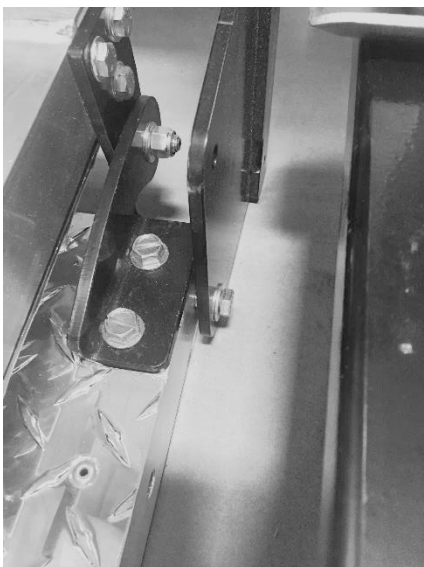
35. Place platform on the ground with center section laying on the ground. Orient the liftgate frame to the platform edge with two holes on sides.



36. Press control switch down to lower carriers to the ground.



37. Insert 3/8" bolt through bottom hole on carrier, placing a nylon washer between the carrier and platform.



38. Insert bolt into platform



39. Match each set of links, one short with one long. Note the short link has a small hole on one end, a larger hold on the other.



40. Place a bolt through the top tab on the carrier, with threads facing towards the outside of the liftgate frame. Place a nylon washer on the bolt once inserted through the carrier tab.



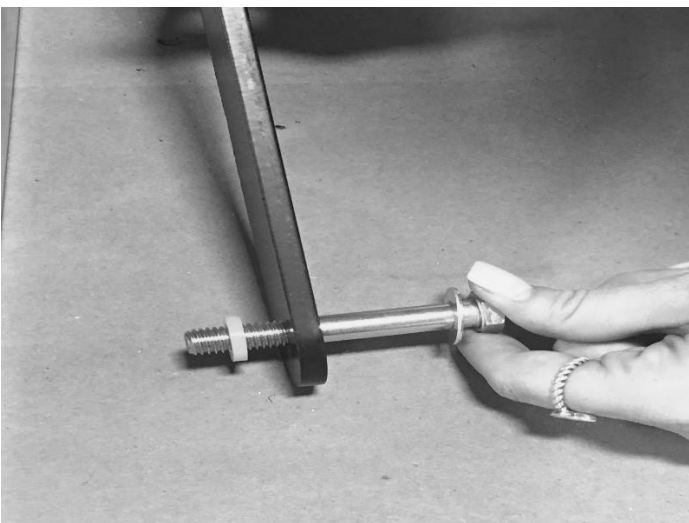
41. Place long link onto bolt, making sure nylon washer is sitting between carrier tab and link.



42. Insert bolt through large hole on short link. Place nylon washer over bolt once inserted.



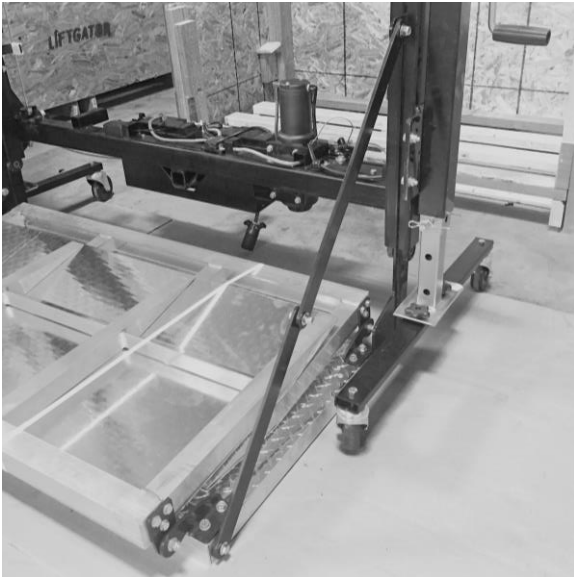
43. Place short link inside of long link, inserting bolt through hole on long link.



44. Insert 3/8" bolt through small hole on short link. Place nylon washer between short link and platform.



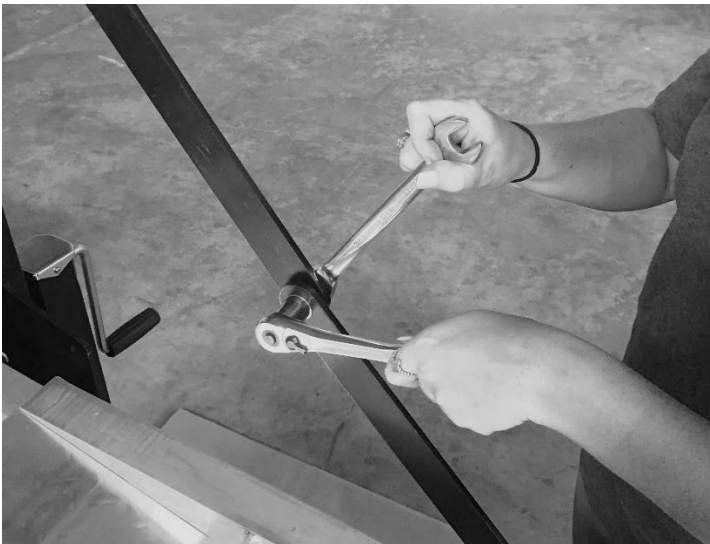
45. Insert bolt into platform.



46. Complete link assembly shown.



47. Press control switch up to raise platform. Check that platform lifts free of obstructions.



48. Tighten link bolts hand tight. Ensure that links can pivot with bolts tight.



49. Fold platform and insert folding pin.



50. Tighten 3/8" nut on inside of platform.



51. Insert bolt with washer through end link of safety



52. Bolt safety chains through holes in battery tray.



53. Install upright covers and tighten four screws on each cover.



54. Install crossmember covers, starting with outer covers



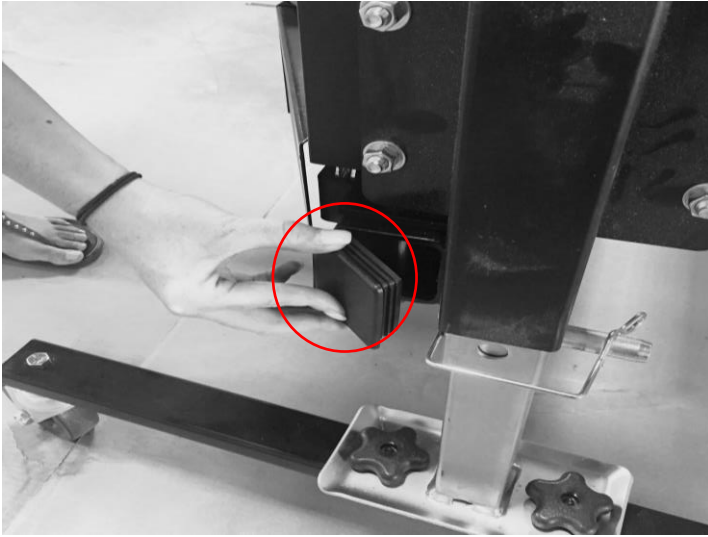
55. Install center crossmember cover, routing 7 pin connector through rear hole in cover.



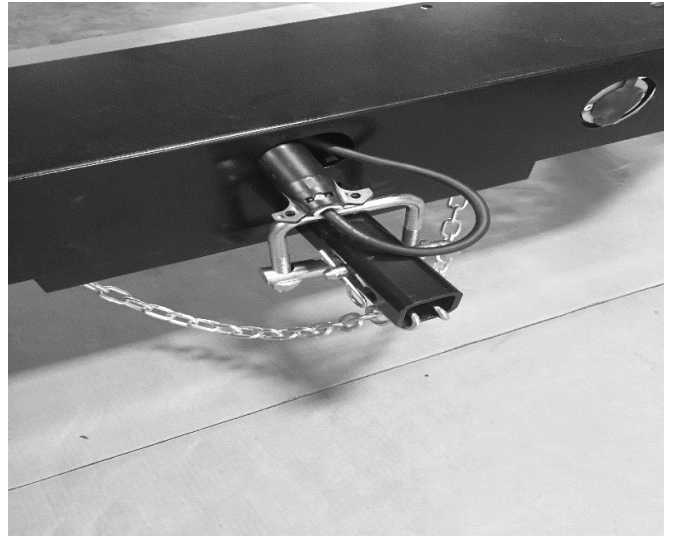
56. Tighten four screw in crossmember covers



57. Install caps on top of upright rails.



58. Install caps in sides of crossmember



59. Slide hitch clamp over LiftGator hitch and insert hitch pin.

WARRANTY

In order for this product to be valid under warranty. You must register your product online at

www.LiftGator.com/warranty, or call 903-577-5592.