

1.0 Reference and Address			
Report Number	210609114GZU-001	Original Issued: 21-Jul-2021	Revised: 29-May-2024
Standard(s)	Gas-Fired Outdoor Infrared Patio Heaters [CSA/ANSI Z83.26:2020 Ed.3]		
	Gas-Fired Outdoor Infrared Patio Heaters [CSA 2.37:2020 Ed.3]		

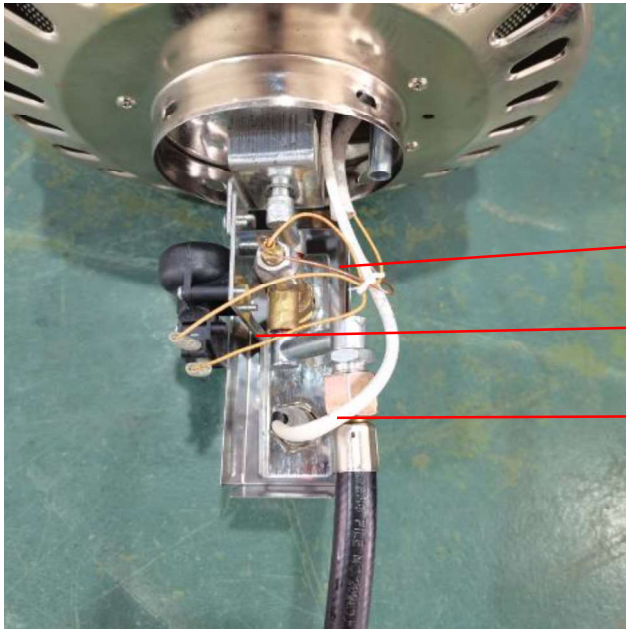
<b>2.0 Product Description</b>	
Product	Gas-Fired Outdoor Infrared Patio Heaters
Brand name	NA
Description	The Gas-Fired Outdoor Infrared Patio Heaters are designed for OUTDOOR USE ONLY.
Models	KST-A-1, KST-A-2, KST-A-3, KST-A-4, KST-A-5, KST-A-6, KST-A-7, KST-A-8
Model Similarity	Models KST-A-1, KST-A-2, KST-A-3 and KST-A-4 have the same structure, but the materials are different. The connecting rods of KST-A-1 and KST-A-2 are double-joint, but the connecting rods of KST-A-3 and KST-A-4 are single-joint. Models KST-A-5, KST-A-6, KST-A-7, KST-A-8 are similar to model KST-A-1, except appearance colour and material.
Ratings	For all models at outlet pressure 11"(2.74kPa) of pressure regulator for connection to an integral self-contained 20lb propane gas cylinder. For all models: Rated at 50000BTU/hr with orifice 2.21 mm;
Other Ratings	NA

**3.0 Product Photographs**

**Photo 1 -** External view of model KST-A-1 also represents models KST-A-2.

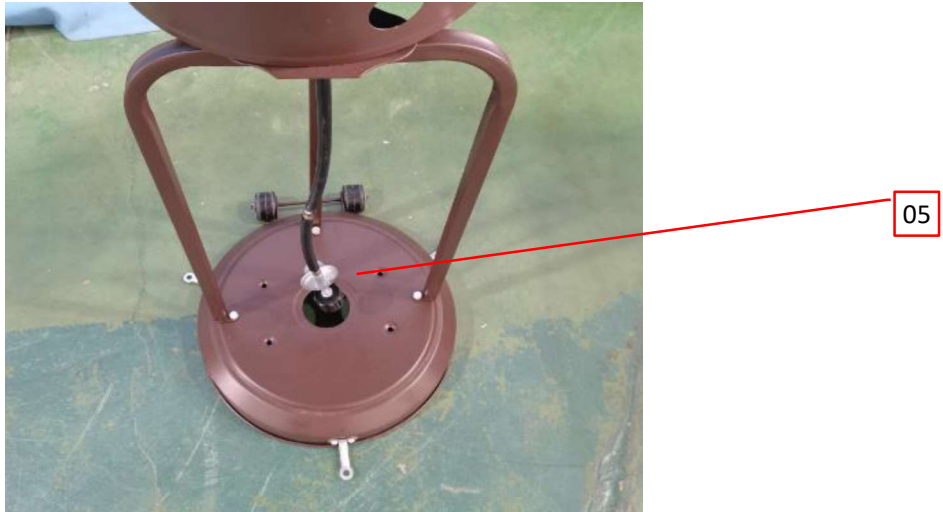


**Photo 2 -** Inner view.

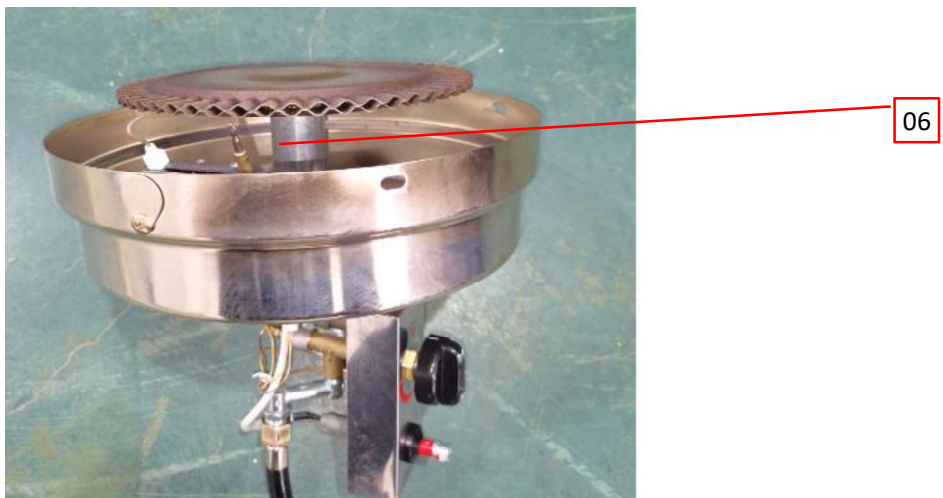


**3.0 Product Photographs**

**Photo 3 - Hose and regulator assembly.**



**Photo 4 - Burner.**



**Photo 5 - Cylinder retention means.**



**3.0 Product Photographs**

**Photo 6** - External view of models KST-A-3 and KST-A-4.



**Photo 7** - External view of models KST-A-5, KST-A-6, KST-A-7, KST-A-8.



## **5.0 Critical Unlisted CEC Components**

No Unlisted CEC components are used in this report.

**6.0 Critical Features**

Recognized Component - A component part, which has been previously evaluated by an accredited certification body with restrictions and must be evaluated as part of the basic product considering the restrictions as specified by the Conditions of Acceptability.

Listed Component - A component part, which has been previously Listed or Certified by an accredited Certification Organization with no restrictions and is used in the intended application within its ratings.

Unlisted Component - A part that has not been previously evaluated to the appropriate designated component standard. It may also be a Listed or Recognized component that is being used outside of its evaluated Listing or component recognition.


Critical Features/Components - An essential part, material, subassembly, system, software, or accessory of a product that has a direct bearing on the product's conformance to applicable requirements of the product standard.

Construction Details - For specific construction details, reference should be made to the photographs and descriptions. All dimensions are approximate unless specified as exact or within a tolerance. In addition to the specific construction details described in this Report, the following general requirements also apply.

- 1 Corrosion Protection - All ferrous metal parts are protected against corrosion by painting, plating or the equivalent.
- 2 Markings - Refer to Illustration No(s). 1-3, 10, 17 and item 1 of section 4 for details.
- 3 Cautionary Markings - The following are required: Refer to Illustration No(s). 1-2, 10, 17 and item 1 of section 4 for details.
- 4 Installation, Operating and Safety Instructions - Instructions for installation and use of this product are provided by the manufacturer. Refer to Illustration No(s). 4-5, 11-12, 18-19 for details.
- 5 Schematics - Refer to Illustration No(s). 6-9, 16 for key drawings requiring verification during Field Representative Inspection Audits.


**7.0 Illustrations**

**Illustration 1 - Rating label of model KST-A-1 -Eng.**

<p>Changzhou Constant Furnace Industry Co., Ltd.                  No. 79 Liangchang Road, Jintan, Changzhou, Jiangsu, China</p> <p>KST-A-1</p> <p>Serial No.:</p> <p>Type of gas: Propane                  Normal Hourly Input: 50,000 BTU/hr (14.7KW)                  Manifold Pressure: 11 inch w.c. (2.74 kpa)                  *For Outdoor Use Only. If Stored Indoors, Detach and Leave Cylinder Outdoors.*                  *The gas supply must be turned off at the Propane supply cylinder when this appliance is not in use.*                  Minimum Clearance From Unit To Combustible Construction:                  48" (121.9 cm) from the top; 48" (121.9cm) from all sides and back.                  CAUTION: The gas pressure regulator provided with this appliance must be used.                  This regulator is set for an outlet pressure of 11 inches watercolumn.</p>	<p><b>! DANGER</b></p> <p></p> <p><b>CARBON MONOXIDE HAZARD</b></p>
<p><b>! WARNING:</b> Do not store or use gasoline or other flammable vapors and liquids in the vicinity of this or any other appliance.                  A Propane cylinder not connected for use shall not be stored in the vicinity of this or any other appliance.</p> <p>Do not store a spare Propane cylinder under or near this appliance.                  Never fill the cylinder beyond 80 percent full.                  If above two instructions is not followed exactly, a fire causing death or serious injury may occur.                  Do not connect to a remote gas supply.</p> <p><b>! WARNING:</b> Improper installation, adjustment, alteration, service or maintenance can cause property damage, injury or death. Read the installation, operating and maintenance instructions thoroughly before installing or servicing this equipment.</p> <p><b>CAUTION:</b> Hot while in operation. Do not touch. Keep children, clothing, furniture, gasoline and other liquids having flammable vapors away.                  The instruction manual contains important information necessary for the proper assembly and safe use of the appliance.                  Read and follow all warnings and instructions before assembling and using the appliance.                  Follow all warnings and instructions when using the appliance.</p>	<p>This appliance can produce carbon monoxide which has no odor.                  Using it in an enclosed space can kill you.                  Never use this appliance in an enclosed space such as a camper, tent, car or home.</p>

**7.0 Illustrations**

**Illustration 2 - Rating label of model KST-A-1 -Fre.**

<p>Changzhou Constant Furnace                  Industry Co., Ltd.                  No.79 Liangchang Road, Jintan,                  Changzhou, Jiangsu, China</p> <p>Type de gaz: Propane                  Entrée horaire normale: 50,000 BTU/14.7KW)                  Pression du collecteur: 11 inch w.c./2.74kpa)                  Pour une utilisation à l'extérieur seulement. Si stocké                  à l'intérieur, séparer les bouteilles et les laisser à l'extérieur.                  Lorsque l'équipement n'est pas utilisé, l'alimentation en gaz                  des bouteilles d'alimentation en GPL doit être fermée.                  Dégageant minimal entre l'unité et la structure combustible:                  48" (121,9 cm) du haut/48" (121,9 cm) de toutes les directions.                  Attention: Un régulateur de pression de gaz fourni avec cet équipement                  doit être utilisé.                  Ce régulateur est réglé à la pression de sortie de 11 pouces d'eau.</p> <p>KST-A-1</p> <p>Serial No.:</p>	<p><b>▲ DANGER</b></p> 
<p><b>▲ Avertissement:</b> Ne pas entreposer ou utiliser d'essence ou d'autres vapeurs et liquides inflammables près de cet équipement ou de tout autre équipement.                  Les bouteilles à gaz à basse pression non raccordées ne doivent pas être entreposées dans cet appareil ou dans tout autre appareil.</p>	<p><b>Risque de monoxyde de carbone</b>                  Cet équipement peut produire du monoxyde de carbone sans odeur.</p>
<p>Ne pas entreposer les bouteilles de GPL de recharge sous ou près de cet équipement.                  Ne pas remplir le cylindre de plus de 80%.                  Si les deux instructions ci-dessus ne sont pas strictement respectées, un incendie peut se produire, causant la mort ou des blessures graves.                  Ne vous connectez pas à une source d'air distante.</p> <p><b>▲ Avertissement:</b> Une installation, un réglage, une modification, une réparation ou un entretien incorrects peuvent causer des dommages matériels, des blessures corporelles ou la mort. Lisez attentivement les instructions d'installation, d'exploitation et d'entretien avant d'installer ou de réparer cet équipement.</p>	<p><b>Ça te tuerait de l'utiliser dans un espace clos.</b>                  N'utilisez pas cet équipement dans un espace clos comme un camping - car, une tente, une voiture ou une maison.</p>
<p>Attention: Ne touchez pas. Éloignez - vous des enfants, des vêtements, des meubles, de l'essence et d'autres liquides contenant des vapeurs inflammables.                  Les instructions contiennent des informations importantes pour un montage correct et une utilisation sûre de l'équipement.                  Lisez et suivez toutes les mises en garde et instructions avant de monter et d'utiliser cet équipement.                  Suivez toutes les mises en garde et instructions lors de l'utilisation de cet appareil.</p>	

**7.0 Illustrations****Illustration 3** -Lighting instruction marking -Eng & Fre.

<p><b>Lighting instructions TO TURN ON THE HEATER:</b></p> <ol style="list-style-type: none"> <li>1. Make sure the control knob is in the "OFF" position.</li> <li>2. Open gas valve fully.</li> <li>3. Press and turn the control knob to "HI" position (counterclockwise 90°), and hold 3-5 seconds.</li> </ol> <p>While holding down the control knob, press the igniter button several times until the flame ignites.</p> <ol style="list-style-type: none"> <li>4. Hold the knob about 30 seconds and then release.</li> </ol> <p>Note: If the flame does not light or it goes out, repeat step 3 above.</p> <ol style="list-style-type: none"> <li>5. Wait at least 5 minutes before attempting to relight the heater.</li> </ol> <p><b><u>TO TURN OFF THE HEATER</u></b></p> <ol style="list-style-type: none"> <li>1. Turn the control knob to "HI" position.</li> <li>2. Press and turn the control knob to "OFF" position.</li> <li>3. Turn off the valve on the LP gas cylinder.</li> </ol>	<p><b>Instructions d'allumage ALLUMER L'APPAREIL DE CHAUFFAGE :</b></p> <ol style="list-style-type: none"> <li>1. Assurez-vous que le bouton de commande est sur la position « OFF ».</li> <li>2. Ouvrez complètement la vanne de gaz.</li> <li>3. Appuyez sur le bouton de commande et tournez-le en position « HI » (à 90° dans le sens antihoraire).</li> </ol> <p>et maintenez-le enfoncé pendant 3 à 5 secondes.</p> <p>Tout en maintenant le bouton de commande enfoncé, appuyez sur le bouton d'allumage à plusieurs reprises jusqu'à ce que la flamme s'allume.</p> <ol style="list-style-type: none"> <li>4. Maintenez le bouton enfoncé pendant 30 secondes environ, puis relâchez-le.</li> </ol> <p>Remarque : Si la flamme ne s'allume pas ou s'éteint, répétez l'étape 3 ci-dessus.</p> <ol style="list-style-type: none"> <li>5. Attendez au moins 5 minutes avant d'essayer de rallumer l'appareil de chauffage.</li> </ol> <p><b><u>ÉTEINDRE L'APPAREIL DE CHAUFFAGE</u></b></p> <ol style="list-style-type: none"> <li>1. Tournez le bouton de commande en position « HI ».</li> <li>2. Appuyez sur le bouton de commande et tournez-le en position « OFF ».</li> <li>3. Fermez la vanne de la bouteille de GPL.</li> </ol>
--	--

**7.0 Illustrations**

Illustration 4 - Cover page of manual-Eng.



# Patio Heater

Changzhou Constant Furnace Industry Co.,Ltd,  
No.79 Liangchang Road,Jintan,Changzhou,Jiangsu,China

Model Number:  
KST-A-1



**⚠ DANGER**  
 If you smell gas:  
 1. Shut off gas to the appliance.  
 2. Extinguish any open flame.  
 3. If odor continues, keep away from the appliance and immediately call your gas supplier or fire department.

**⚠ WARNING**  
 Do not store or use gasoline or other flammable vapors and liquids in the vicinity of this or any other appliance.  
 A Propane-cylinder not connected for use shall not be stored in the vicinity of this or any other appliance.

**⚠ WARNING**  
 For outdoor use only.

**INSTALLER:**  
 Leave this manual with the appliance.  
**CONSUMER:**  
 Retain this manual for future reference.

**⚠ WARNING**  
 Improper installation, adjustment, alteration, service or maintenance can cause property damage, injury or death. Read the installation, operating and maintenance instructions thoroughly before installing or servicing this equipment. If the information in this manual is not followed exactly, a fire or explosion may result causing property damage, personal injury or loss of life.

<b>⚠ DANGER</b>	<b>CARBON MONOXIDE HAZARD</b>
	This appliance can produce carbon monoxide which has no odor. Using it in an enclosed space can kill you. Never use this appliance in an enclosed space such as a camper, tent, car or home.


# Owner's Manual

**7.0 Illustrations**


Illustration 5 - Cover page of manual-Fre.

## Appareil de chauffage de terrasse en bronze


Changzhou Constant Furnace Industry Co.,Ltd,  
No.79 Liangchang Road,Jintan,Changzhou,Jiangsu,China



Model Number:  
KST-A-1

	<p><b>DANGER</b></p> <p>Si vous détectez une odeur de gaz :</p> <ol style="list-style-type: none"> <li>1. Coupez l'alimentation en gaz de l'appareil.</li> <li>2. <b>Éteignez toute flamme nue.</b></li> <li>3. Si l'odeur persiste, tenez-vous à distance de l'appareil et appelez immédiatement le fournisseur de gaz ou le service d'incendie.</li> </ol>
	<p><b>AVERTISSEMENT</b></p> <p>N'entreposez pas et n'utilisez pas d'essence ni d'autres vapeurs ou <b>liquides inflammables à proximité</b> de cet appareil ou de tout autre appareil. Ne rangez pas de bouteille de propane liquide non raccordée à proximité de cet appareil ni de tout autre appareil.</p>
	<p><b>AVERTISSEMENT</b></p> <p>Pour un usage extérieur seulement.</p>
	<p><b>INSTALLATEUR :</b> Laissez ce guide avec l'appareil. <b>CONSOMMATEUR :</b> Gardez ce guide pour une utilisation ultérieure.</p>

<p><b>AVERTISSEMENT</b></p> <p>Une installation, un ajustement, une modification, un service ou un entretien incorrects peuvent causer des dommages matériels, Blessures ou décès. Lisez attentivement les instructions d'installation, d'exploitation et d'entretien avant l'installation. Si les informations contenues dans ce manuel ne sont pas strictement respectées, installer ou réparer l'équipement. Un incendie ou une explosion peut causer des dommages matériels, des blessures corporelles ou des pertes en vies humaines.</p>
--

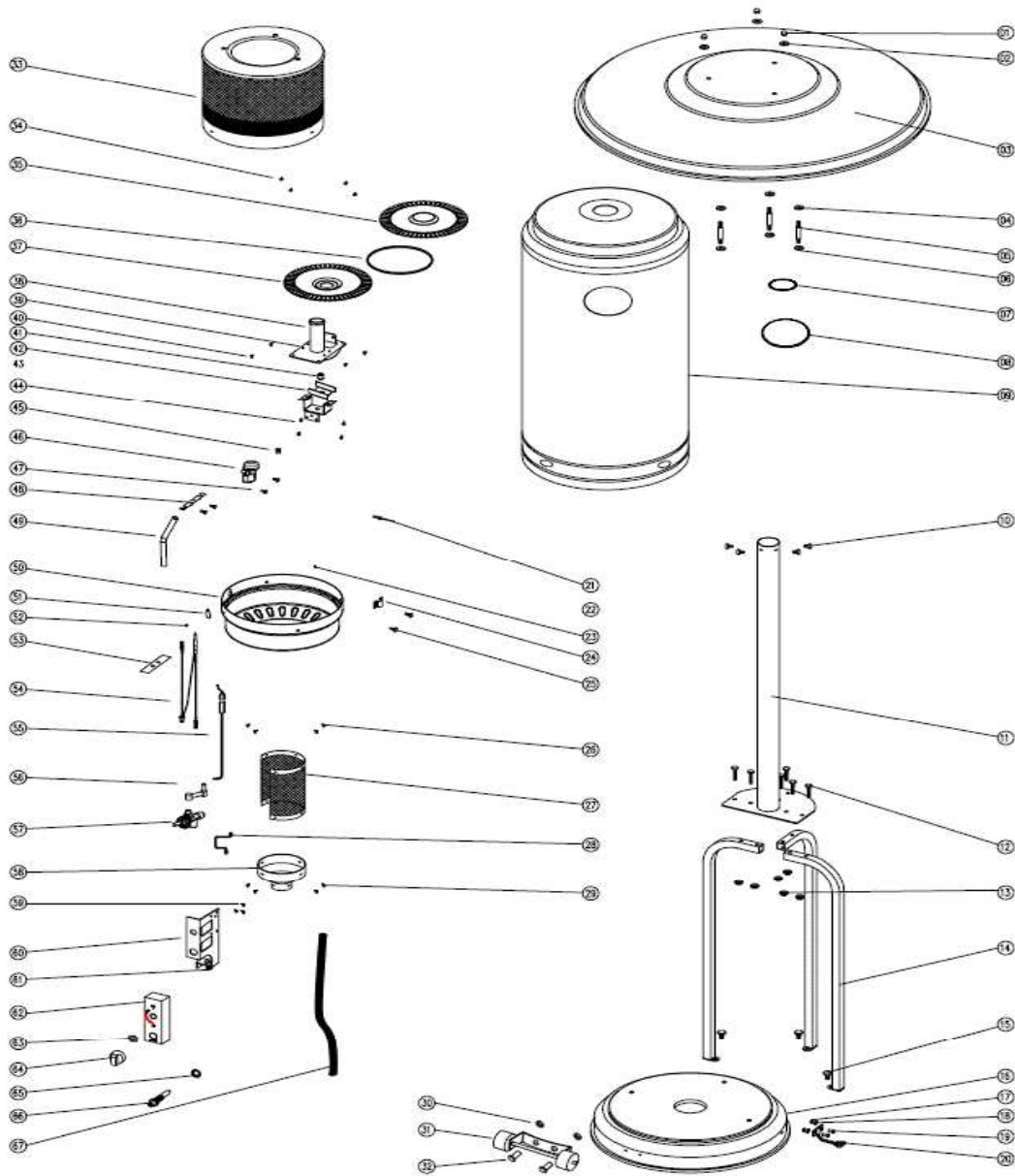
<p><b>DANGER</b></p> 	<p><b>RISQUE LIÉ AU MONOXYDE DE CARBONE</b></p> <p>Cet appareil peut générer du monoxyde de carbone, un gaz inodore. L'utilisation de cet appareil dans un endroit fermé pourrait causer la mort. N'utilisez jamais cet appareil dans un endroit fermé comme une caravane, une tente, une automobile ou une maison.</p>
--	---

## Guide d'utilisation



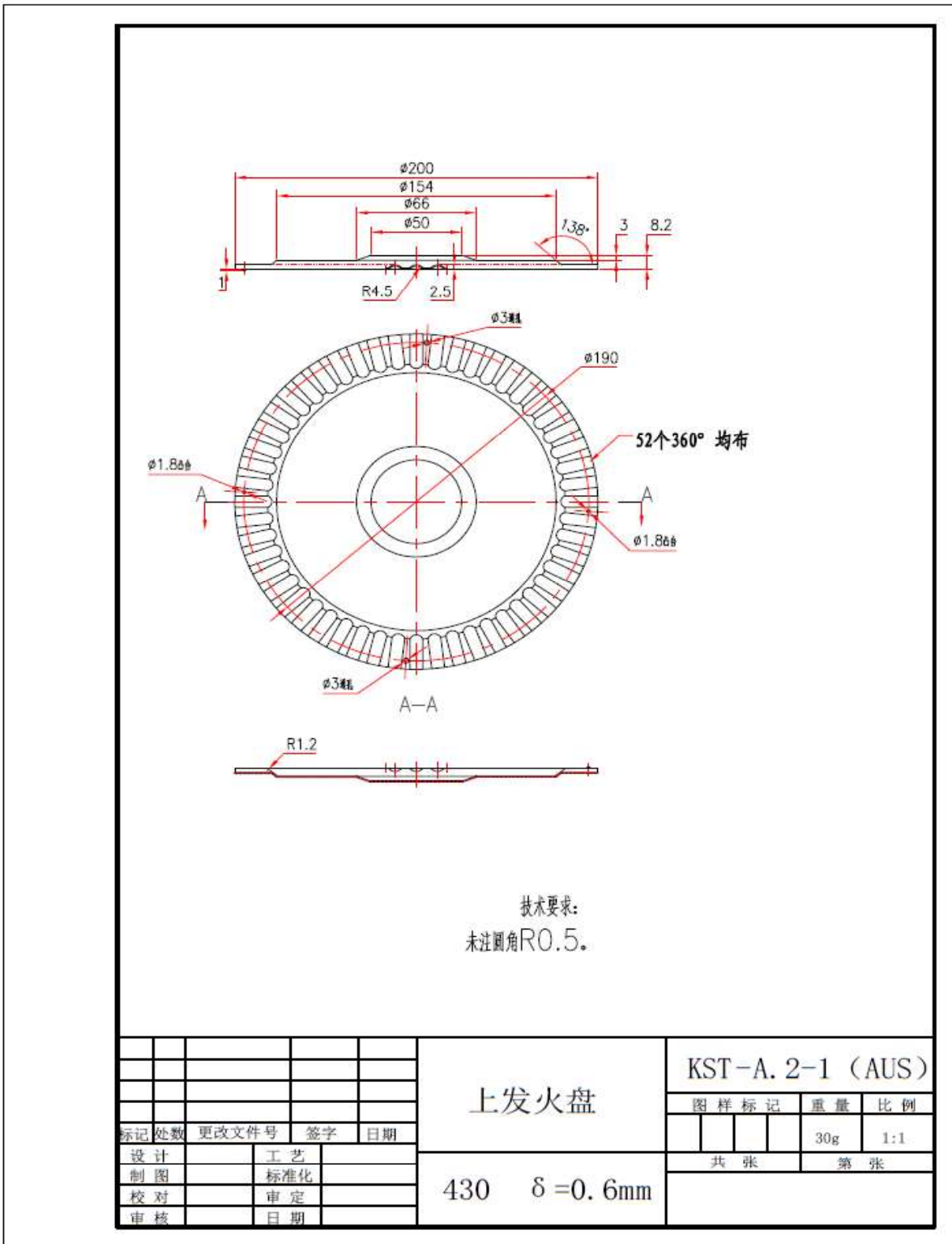
**7.0 Illustrations**

**Illustration 7 - Explode Drawing for models KST-A-3 and KST-A-4.**



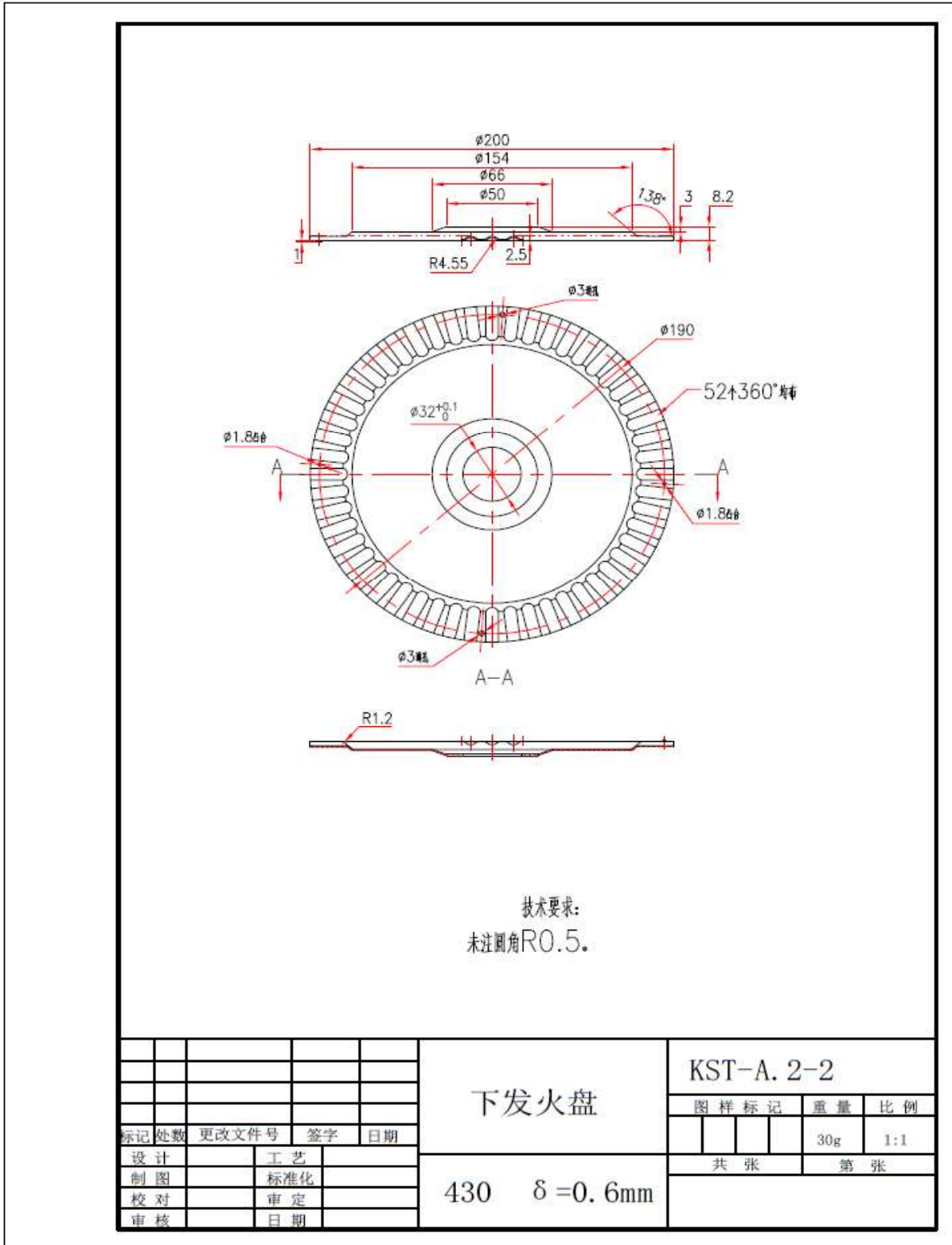
**7.0 Illustrations**

**Illustration 8 - Top fire plate.**





**7.0 Illustrations**

**Illustration 9 - Base fire plate.**



**7.0 Illustrations****Illustration 10 - Rating label of ML1 model DFN103 -Eng & Fre.**

<p>Changzhou City Definuo Electrical Co.,Ltd. Qingyun Village, Niutang Town, Wujin District, Changzhou City</p> <p>DFN103</p> <p>Serial No.:</p>	<p>Type of gas: Propane Normal Hourly Input: 50,000 BTU/hr (14.7Kw) Manifold Pressure: 11 inch w.c. (2.74 kpa) "For Outdoor Use Only, If Stored Indoors, Detach and Leave Cylinder Outdoors." The gas supply must be turned off at the propane gas supply cylinder when this appliance is not in use. Minimum Clearance From Unit To Combustible Construction: 48" (121.9 cm) from the top; 48" (121.9cm) from all sides and back. CAUTION: The gas pressure regulator provided with this appliance must be used. This regulator is set for an outlet pressure of 11 inches watercolumn.</p>	<p><b>⚠ DANGER</b></p>
<p><b>⚠ WARNING:</b> Do not store or use gasoline or other flammable vapors and liquids in the vicinity of this or any other appliance. A propane cylinder not connected for use shall not be stored in the vicinity of this or any other appliance.</p>		
<p>Do not store a spare propane gas cylinder under or near this appliance. Never fill the cylinder beyond 80 percent full. If above two instructions is not followed exactly, a fire causing death or serious injury may occur. Do not connect to a remote gas supply.</p>		<p><b>CARBON MONOXIDE HAZARD</b></p>
<p><b>⚠ WARNING:</b> Improper installation, adjustment, alteration, service or maintenance can cause property damage, injury or death. Read the installation, operating and maintenance instructions thoroughly before installing or servicing this equipment.</p>		<p>This appliance can produce carbon monoxide which has no odor. Using it in an enclosed space can kill you. Never use this appliance in an enclosed space such as a camper, tent, car or home.</p>
<p><b>CAUTION:</b> Hot while in operation. Do not touch. Keep children, clothing, furniture, gasoline and other liquids having flammable vapors away. The instruction manual contains important information necessary for the proper assembly and safe use of the appliance. Read and follow all warnings and instructions before assembling and using the appliance. Follow all warnings and instructions when using the appliance.</p>		

<p>Changzhou City Definuo Electrical Co.,Ltd. Qingyun Village, Niutang Town, Wujin District, Changzhou City</p> <p>DFN103</p> <p>Serial No.:</p>	<p>Type de gaz: Propane Entrée horaire normale: 50,000 BTU (14.7KW) Pression du collecteur: 11 inch w.c. (2.74kpa) Pour une utilisation à l'extérieur seulement. Si stocké à l'intérieur, séparer les bouteilles et les laisser à l'extérieur. Lorsque l'équipement n'est pas utilisé, l'alimentation en gaz des bouteilles d'alimentation en GPL doit être fermée. Dégagement minimal entre l'unité et la structure combustible: 48 "(121,9 cm) du haut: 48 "(121,9 cm) de toutes les directions. Attention: Un régulateur de pression de gaz fourni avec cet équipement doit être utilisé. Ce régulateur est réglé à la pression de sortie de 11 pouces d'eau.</p>	<p><b>⚠ DANGER</b></p>
<p><b>⚠ Avertissement:</b> Ne pas entreposer ou utiliser d'essence ou d'autres vapeurs et liquides inflammables près de cet équipement ou de tout autre équipement. Les bouteilles à gaz à basse pression non raccordées ne doivent pas être entreposées dans cet appareil ou dans tout autre appareil.</p>		
<p>Ne pas entreposer les bouteilles de propane de rechange sous ou près de cet équipement. Ne pas remplir le cylindre de plus de 80%. Si les deux instructions ci-dessus ne sont pas strictement respectées, un incendie peut se produire, causant la mort ou des blessures graves. Ne vous connectez pas à une source d'air distante.</p>		<p><b>Risque de monoxyde de carbone</b> <b>Cet équipement peut produire du monoxyde de carbone sans odeur.</b></p>
<p><b>⚠ Avertissement:</b> Une installation, un réglage, une modification, une réparation ou un entretien incorrects peuvent causer des dommages matériels, des blessures corporelles ou la mort. Lisez attentivement les instructions d'installation, d'exploitation et d'entretien avant d'installer ou de réparer cet équipement.</p>		<p><b>Ça te tuerait de l'utiliser dans un espace clos.</b> <b>N'utilisez pas cet équipement dans un espace clos comme un camping - car, une tente, une voiture ou une maison.</b></p>
<p>Attention: Ne touchez pas. Éloignez - vous des enfants, des vêtements, des meubles, de l'essence et d'autres liquides contenant des vapeurs inflammables. Les instructions contiennent des informations importantes pour un montage correct et une utilisation sûre de l'équipement. Lisez et suivez toutes les mises en garde et instructions avant de monter et d'utiliser cet équipement. Suivez toutes les mises en garde et instructions lors de l'utilisation de cet appareil.</p>		

**7.0 Illustrations**

Illustration 11 - Cover page of manual for ML1 model DFN103-Eng.



## Patio Heater


Changzhou City Definuo Electrical Co., Ltd  
Qingyun Village, Niutang Town, Wujin District,  
Changzhou City



Model Number:  
DFN103

<p><b>⚠ DANGER</b> If you smell gas: 1. Shut off gas to the appliance. 2. Extinguish any open flame. 3. If odor continues, keep away from the appliance and immediately call your gas supplier or fire department.</p>
<p><b>⚠ WARNING</b> Do not store or use gasoline or other flammable vapors and liquids in the vicinity of this or any other appliance. A Propane-cylinder not connected for use shall not be stored in the vicinity of this or any other appliance.</p>
<p><b>⚠ WARNING</b> For outdoor use only.</p>
<p><b>INSTALLER:</b> Leave this manual with the appliance. <b>CONSUMER:</b> Retain this manual for future reference.</p>

**⚠ WARNING**  
Improper installation, adjustment, alteration, service or maintenance can cause property damage, injury or death. Read the installation, operating and maintenance instructions thoroughly before installing or servicing this equipment. If the information in this manual is not followed exactly, a fire or explosion may result causing property damage, personal injury or loss of life.

<p><b>⚠ DANGER</b></p> 	<p><b>CARBON MONOXIDE HAZARD</b> This appliance can produce carbon monoxide which has no odor. Using it in an enclosed space can kill you. Never use this appliance in an enclosed space such as a camper, tent, car or home.</p>
--	---

# Owner's Manual

**7.0 Illustrations**

Illustration 12 - Cover page of manual for ML1 model DFN103-Fre.



## Appareil de chauffage de terrasse en bronze

Changzhou City Definuo Electrical Co., Ltd  
Qingyun Village, Niutang Town, Wujin District, Changzhou City

Model Number:  
DFN103



**⚠ DANGER**  
Si vous détectez une odeur de gaz :  
1. Coupez l'alimentation en gaz de l'appareil.  
**2. Éteignez toute flamme nue.**  
3. Si l'odeur persiste, tenez-vous à distance de l'appareil et appelez immédiatement le fournisseur de gaz ou le service d'incendie.

**⚠ AVERTISSEMENT**  
N'entreposez pas et n'utilisez pas d'essence ni d'autres vapeurs ou **liquides inflammables à proximité** de cet appareil ou de tout autre appareil. Ne rangez pas de bouteille de propane liquide non raccordée à proximité de cet appareil ni de tout autre appareil.

**⚠ AVERTISSEMENT**  
Pour un usage extérieur seulement.

**INSTALLATEUR** : Laissez ce guide avec l'appareil.  
**CONSOMMATEUR** : Gardez ce guide pour une utilisation ultérieure.

**⚠ AVERTISSEMENT**

Une installation, un ajustement, une modification, un service ou un entretien incorrects peuvent causer des dommages matériels, Blessures ou décès. Lisez attentivement les instructions d'installation, d'exploitation et d'entretien avant l'installation. Si les informations contenues dans ce manuel ne sont pas strictement respectées, installer ou réparer l'équipement, Un incendie ou une explosion peut causer des dommages matériels, des blessures corporelles ou des pertes en vies humaines.

**⚠ DANGER**

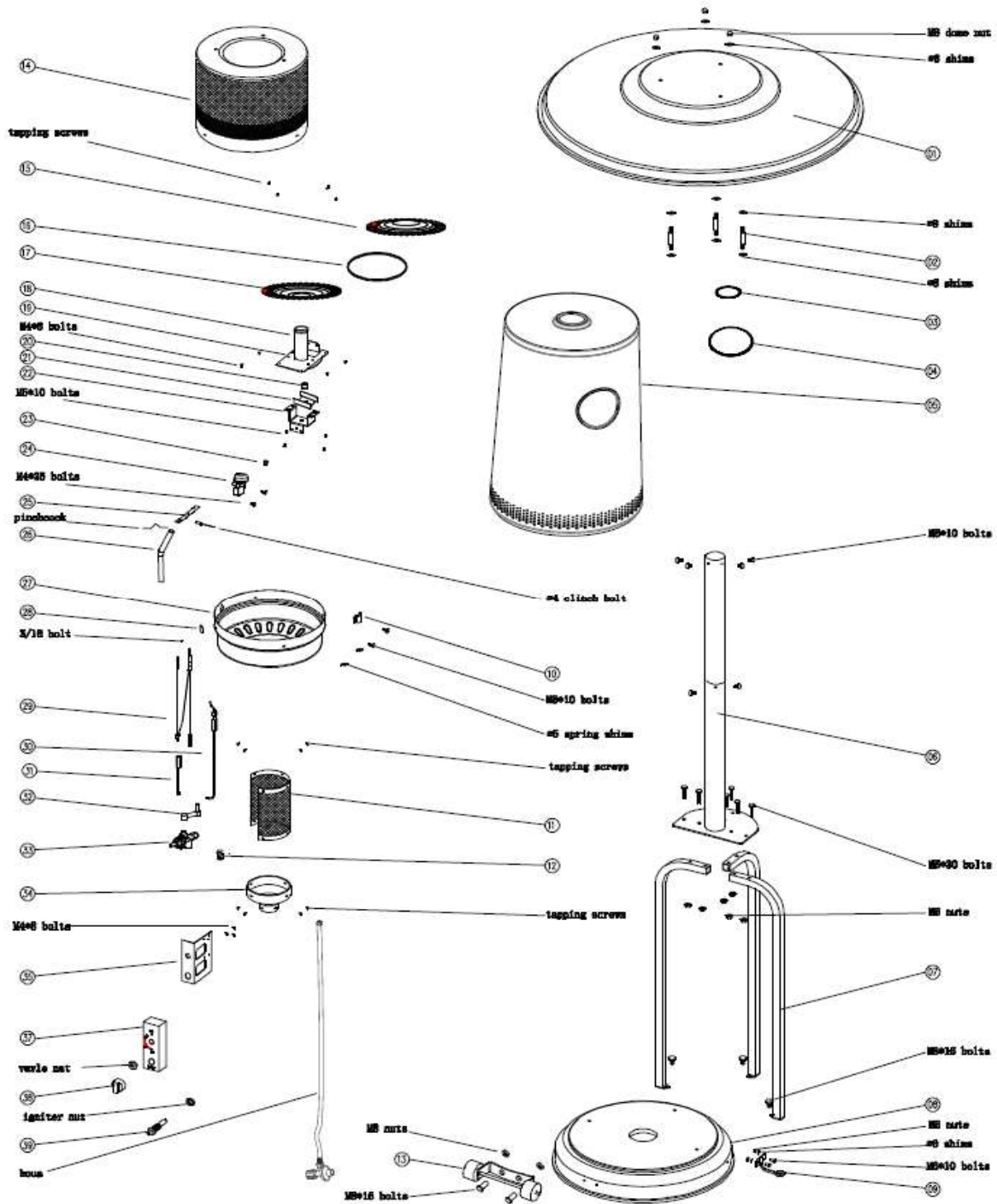


**RISQUE LIÉ AU MONOXYDE DE CARBONE**  
Cet appareil peut générer du monoxyde de carbone, un gaz inodore.  
L'utilisation de cet appareil dans un endroit fermé pourrait causer la mort.  
N'utilisez jamais cet appareil dans un endroit fermé comme une caravane, une tente, une automobile ou une maison.


## Guide d'utilisation


**7.0 Illustrations**

**Illustration 16 - Explode Drawing for models KST-A-5, KST-A-6, KST-A-7, KST-A-8.**



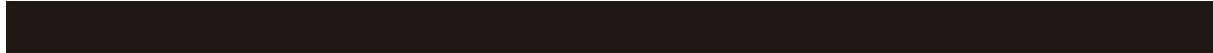
**7.0 Illustrations****Illustration 17 - Rating label of ML3 model -Eng & Fre.**

<p>East Oak 8620 Thornton Avenue, Newark, CA 94560</p> <p>UR50BN2</p> <p>Serial No.:</p>	<p>Type of gas: Propane Normal Hourly Input: 50,000 BTU/hr (14.7Kw) Manifold Pressure: 11 inch w.c. (2.74 kpa) "For Outdoor Use Only. If Stored Indoors, Detach and Leave Cylinder Outdoors." "The gas supply must be turned off at the propane supply cylinder when this appliance is not in use." Minimum Clearance From Unit To Combustible Construction: 48" (121.9 cm) from the top; 48" (121.9cm) from all sides and back. CAUTION: The gas pressure regulator provided with this appliance must be used. This regulator is set for an outlet pressure of 11 inches watercolumn.</p>	<p><b>⚠ DANGER</b></p>
<p><b>⚠ WARNING:</b> Do not store or use gasoline or other flammable vapors and liquids in the vicinity of this or any other appliance. A propane cylinder not connected for use shall not be stored in the vicinity of this or any other appliance.</p>		
<p>Do not store a spare propane cylinder under or near this appliance. Never fill the cylinder beyond 80 percent full. If above two instructions is not followed exactly, a fire causing death or serious injury may occur. Do not connect to a remote gas supply.</p>		<p><b>CARBON MONOXIDE HAZARD</b></p>
<p><b>⚠ WARNING:</b> Improper installation, adjustment, alteration, service or maintenance can cause property damage, injury or death. Read the installation, operating and maintenance instructions thoroughly before installing or servicing this equipment.</p>		<p>This appliance can produce carbon monoxide which has no odor. Using it in an enclosed space can kill you. Never use this appliance in an enclosed space such as a camper, tent, car or home.</p>
<p><b>CAUTION:</b> Hot while in operation. Do not touch. Keep children, clothing, furniture, gasoline and other liquids having flammable vapors away. The instruction manual contains important information necessary for the proper assembly and safe use of the appliance. Read and follow all warnings and instructions before assembling and using the appliance. Follow all warnings and instructions when using the appliance.</p>		

<p>East Oak 8620 Thornton Avenue, Newark, CA 94560</p> <p>UR50BN2</p> <p>Serial No.:</p>	<p>Type de gaz: Propane Entrée horaire normale: 50,000 BTU (14.7KW) Pression du collecteur: 11 inch w.c. (2.74kpa) Pour une utilisation à l'extérieur seulement. Si stocké à l'intérieur, séparer les bouteilles et les laisser à l'extérieur. Lorsque l'équipement n'est pas utilisé, l'alimentation en gaz des bouteilles d'alimentation en GPL doit être fermée. Dégagement minimal entre l'unité et la structure combustible: 48 "(121,9 cm) du haut: 48 "(121,9 cm) de toutes les directions. Attention: Un régulateur de pression de gaz fourni avec cet équipement doit être utilisé. Ce régulateur est réglé à la pression de sortie de 11 pouces d'eau.</p>	<p><b>⚠ DANGER</b></p>
<p><b>⚠ Avertissement:</b> Ne pas entreposer ou utiliser d'essence ou d'autres vapeurs et liquides inflammables près de cet équipement ou de tout autre équipement. Les bouteilles à gaz à basse pression non raccordées ne doivent pas être entreposées dans cet appareil ou dans tout autre appareil.</p>		
<p>Ne pas entreposer les bouteilles de GPL de recharge sous ou près de cet équipement. Ne pas remplir le cylindre de plus de 80%. Si les deux instructions ci-dessus ne sont pas strictement respectées, un incendie peut se produire, causant la mort ou des blessures graves. Ne vous connectez pas à une source d'air distante.</p>		<p><b>Risque de monoxyde de carbone</b> Cet équipement peut produire du monoxyde de carbone sans odeur.</p>
<p><b>⚠ Avertissement:</b> Une installation, un réglage, une modification, une réparation ou un entretien incorrects peuvent causer des dommages matériels, des blessures corporelles ou la mort. Lisez attentivement les instructions d'installation, d'exploitation et d'entretien avant d'installer ou de réparer cet équipement.</p>		<p><b>Ça te tuerait de l'utiliser dans un espace clos.</b> N'utilisez pas cet équipement dans un espace clos comme un camping - car, une tente, une voiture ou une maison.</p>
<p>Attention: Ne touchez pas. Éloignez - vous des enfants, des vêtements, des meubles, de l'essence et d'autres liquides contenant des vapeurs inflammables. Les instructions contiennent des informations importantes pour un montage correct et une utilisation sûre de l'équipement. Lisez et suivez toutes les mises en garde et instructions avant de monter et d'utiliser cet équipement. Suivez toutes les mises en garde et instructions lors de l'utilisation de cet appareil.</p>		

**7.0 Illustrations**

Illustration 18 - Cover page of manual for ML3 model-Eng.



# Patio Heater


East Oak  
8620 Thornton Avenue,  
Newark, CA 94560

Model Number:  
UR50BN2



<p><b>⚠ DANGER</b> If you smell gas: 1. Shut off gas to the appliance. 2. Extinguish any open flame. 3. If odor continues, keep away from the appliance and immediately call your gas supplier or fire department.</p>
<p><b>⚠ WARNING</b> Do not store or use gasoline or other flammable vapors and liquids in the vicinity of this or any other appliance. A Propane-cylinder not connected for use shall not be stored in the vicinity of this or any other appliance.</p>
<p><b>⚠ WARNING</b> For outdoor use only.</p>
<p><b>INSTALLER:</b> Leave this manual with the appliance. <b>CONSUMER:</b> Retain this manual for future reference.</p>

<p><b>⚠ WARNING</b> Improper installation, adjustment, alteration, service or maintenance can cause property damage, injury or death. Read the installation, operating and maintenance instructions thoroughly before installing or servicing this equipment. If the information in this manual is not followed exactly, a fire or explosion may result causing property damage, personal injury or loss of life.</p>
---

<p><b>⚠ DANGER</b></p> 	<p><b>CARBON MONOXIDE HAZARD</b> This appliance can produce carbon monoxide which has no odor. Using it in an enclosed space can kill you. Never use this appliance in an enclosed space such as a camper, tent, car or home.</p>
--	---



# Owner's Manual

**7.0 Illustrations**

Illustration 19 - Cover page of manual for ML3 model-Fre.



## Appareil de chauffage de terrasse en bronze

East Oak  
8620 Thornton Avenue,  
Newark, CA 94560

Model Number:  
UR50BN2



**!** DANGER

Si vous détectez une odeur de gaz :

1. Coupez l'alimentation en gaz de l'appareil.
2. **Éteignez toute flamme nue.**
3. Si l'odeur persiste, tenez-vous à distance de l'appareil et appelez immédiatement le fournisseur de gaz ou le service d'incendie.

**!** AVERTISSEMENT

N'entrez pas et n'utilisez pas d'essence ni d'autres vapeurs ou **liquides inflammables à proximité** de cet appareil ou de tout autre appareil. Ne rangez pas de bouteille de propane liquide non raccordée à proximité de cet appareil ni de tout autre appareil.

**!** AVERTISSEMENT

Pour un usage extérieur seulement.

**INSTALLATEUR :** Laissez ce guide avec l'appareil.

**CONSOMMATEUR :** Gardez ce guide pour une utilisation ultérieure.

**!** AVERTISSEMENT

Une installation, un ajustement, une modification, un service ou un entretien incorrects peuvent causer des dommages matériels, Blessures ou décès. Lisez attentivement les instructions d'installation, d'exploitation et d'entretien avant l'installation. Si les informations contenues dans ce manuel ne sont pas strictement respectées, installer ou réparer l'équipement. Un incendie ou une explosion peut causer des dommages matériels, des blessures corporelles ou des pertes en vies humaines.

**!** DANGER





**RISQUE LIÉ AU MONOXYDE DE CARBONE**  
Cet appareil peut générer du monoxyde de carbone, un gaz inodore.

L'utilisation de cet appareil dans un endroit fermé pourrait causer la mort.

N'utilisez jamais cet appareil dans un endroit fermé comme une caravane, une tente, une automobile ou une maison.

## Guide d'utilisation

<b>8.0 Test Summary</b>			
Evaluation Period	28 Jun 2021 ~ 2 Jul 2021		Project No. 210609114GZU
Sample Rec. Date	10-Jun-2021	Condition Prototype	Sample ID. S210609114GZU.001
Test Location	Intertek Testing Services Shenzhen Ltd. Guangzhou Branch (Room 4103 & 4203, No. 63, Punan Road, Huangpu District, Guangzhou, Guangdong Province, China.)		
Test Procedure	Testing Lab		
Determination of the result includes consideration of measurement uncertainty from the test equipment and methods. The product was tested as indicated below with results in conformance to the relevant test criteria.			
The following tests were performed:			
Test Description	Gas-Fired Outdoor Infrared Patio Heaters [CSA/ANSI Z83.26:2020 Ed.3]		
	Gas-Fired Outdoor Infrared Patio Heaters [CSA 2.37:2020 Ed.3]		
Input Rate	5.3		
Combustion-General	5.4		
Burner operating characteristics	5.7		
Pilot burners and safety shutoff devices	5.8		
Manual ignition systems	5.12		
Wall, floor, and ceiling temperatures	5.15		
Component; handle and knob; tubing and fittings; and electrical equipment	5.16		
Burn hazard and clothing ignition potential	5.17		
Rain test	5.19		
Wind test	5.20		
Manual valves	5.21		
Appliance stability	5.22		
Evaluation Period	15-Sep-2021		Project No. 210913128GZU
Due to the previous testing performed and reported above, no additional testing was necessary.			
Evaluation Period	19-Jul-2023		Project No. 230717041GZU
Due to the previous testing performed and reported above, no additional testing was necessary.			
Evaluation Period	29-May-2024		Project No. 240508037GZU
Due to the previous testing performed and reported above, no additional testing was necessary.			
<b>8.1 Signatures</b>			
A representative sample of the product covered by this report has been evaluated and found to comply with the applicable requirements of the standards indicated in Section 1.0.			
Completed by:	Haowen Luo	Reviewed by:	Ball Qiu
Title:	Engineer	Title:	Sr.Project Engineer
Signature:		Signature:	

**10.0 General Information**

The Applicant and Manufacturer have agreed to produce, test and label ETL Listed products in accordance with the requirements of this Report. The Manufacturer has also agreed to notify Intertek and to request authorization prior to using alternate parts, components or materials.

**COMPONENTS**

Components used shall be those itemized in this Intertek report covering the product, including any amendments

**LISTING MARK**

The ETL Listing mark applied to the products shall either be separable in form, such as labels purchased from Intertek, or on a product nameplate or other media only as specifically authorized by Intertek. Use of the mark is subject to the control of Intertek.

The mark must include the following four items:

- 1) applicable country identifiers "US" and/or "C" or "US", "C" and "EU"
- 2) the word "Listed" or "Classified" or "Recognized Component" (whichever is appropriate)
- 3) a control number issued by Intertek
- 4) a product descriptor that identifies the standards used for certification. Example:

**For US standards**, the words, "Conforms to" shall appear with the standard number along with the word, "Standard" or "Std." Example: "Conforms to ANSI/UL Std. XX."

**For Canadian standards**, the words "Certified to CAN/CSA Standard CXX No. XX." shall be used, or abbreviated, "Cert. to CAN/CSA Std. CXX No. XX."

Can be used together when both standards are used.

**If all standards on the ATM have the same standard title**, the shared title or its abbreviation may be used in place of the examples above. Example: "Medical Electrical Equipment" or "MEE"; "Information Technology Equipment" or "ITE"; "Audio/Video Information And Communication Technology Equipment" or "A/V ICTE".

**Note: A facsimile must be submitted to Intertek, Attn: Follow-up Services for approval prior to use.**

The facsimile need not have a control number. A control number will be issued **after signed Certification Agreements** have been received by the Follow-up Services office, approval of the facsimile of your proposed Listing Mark, satisfactory completion of the Listing Report, and scheduling of a factory assessment in your facility.

**MANUFACTURING AND PRODUCTION TESTS**

Manufacturing and Production Tests shall be performed as required in this Report.

**FOLLOW-UP SERVICE**

Periodic unannounced audits of the manufacturing facility (and any locations authorized to apply the mark) shall be scheduled by Intertek. An audit report shall be issued after each visit. Special attention will be given to the following:

1. Conformance of the manufactured product to the descriptions in this Report.
2. Conformance of the use of the ETL mark with the requirements of this Report and the Certification Agreement.
3. Manufacturing changes.
4. Performance of specified Manufacturing and Production Tests.

In the event that the Intertek representative identifies non-conformance(s) to any provision of this Report, the Applicant shall take one or more of the following actions:

1. Correct the non-conformance.
2. Remove the ETL Mark from non-conforming product.
3. Contact the issuing product safety evaluation center for instructions.

**10.1 Evaluation of Unlisted Components**

Because Unlisted Components are uncontrolled, and they do not fall under a third party follow up program, Intertek may require these components to be tested and/or evaluated at least once annually, more often for certain components, as part of the independent certification process. The Unlisted Components in Section 5.0 require testing and/or evaluation as indicated.

**The Applicant will be notified, in writing, via the applicable contact methods, as defined in Section 1.0, when these components must be selected and sent to Component Evaluation Center (CEC) for re-evaluation.**

**Due to particular testing requirements, some components may be requested to be shipped to specific labs. Thus, specific shipment destination(s) for each sample will be provided in the written notification.**

Managing CEC Location:

Intertek Testing Services Shenzhen Limited Guangzhou Branch

ETL Component Evaluation Center

Room 101/301/401/102/202/302/402/502/602/702/802, No. 7-2, Caipin Road, Huangpu  
Guangzhou, Guangdong, China

Attn: Ms. Joey Kuang

Sample Disposition: Due to the destructive nature of the testing, all samples will be discarded at the conclusion of testing unless, the manufacturer specifically requests the return of the samples. The request for return must accompany the initial component shipment.

<b>11.0 Manufacturing and Production Tests</b>	
The manufacturer agrees to conduct the following Manufacturing and Production Tests as specified:	
<b>Required Tests</b>	
11.1 Gas tightness 11.2 Burner Operating Characteristics 11.3 Ignition systems 11.4 Combustion 11.5 Surface temperatures	
<b>11.1 Gas tightness</b>	
<u>Method</u> Test fire each burner and manifold and control assembly for proper burner and gas valve operation and verify the gas tightness of the manifold and control assembly. No leakage on each manifold and control assembly shall be observed	
<u>Test Equipment</u> Gas leak tester	
<b>Products Requiring Gas tightness</b>	
<u>Product</u> All products covered by this Report.	<u>Frequency</u> 100%
<b>11.2 Burner Operating Characteristics</b>	
<u>Method</u> Test shall consist of a series of three tests; one at normal test pressure, one at a reduced test pressure and one at an increased test pressure, whichever is applicable. Burners shall not flash back; Burner flames shall not flash outside of appliance; No damage to the appliance; Pilot shall not deposit carbon.	
<u>Test Equipment</u> Stop watch, Pressure Meter	
<b>Products Requiring Burner Operating Characteristics</b>	
<u>Product</u> All products covered by this Report	<u>Frequency</u> 5 pieces per quarter
<b>11.3 Ignition systems</b>	
<u>Method</u> Test shall consist of a series of three tests; one at normal test pressure, one at a reduced test pressure and one at an increased test pressure or increased input rate, whichever is applicable. Ignition device shall effectively ignite the burner within 4 seconds, after gas is available at the burner ports; Ignition test shall repeat at least 5 times. Safety shutoff devices shall shut off gas to burner within the failure response time.	
<u>Test Equipment</u> Stop watch, Pressure Meter	
<b>Products Requiring Ignition systems</b>	
<u>Product</u> All products covered by this Report Ignition test	<u>Frequency</u> 100%
Safety shutoff devices	5 pieces per quarter
<b>11.4 Combustion</b>	
<u>Method</u> Test shall consist of a series of three tests; one at normal test pressure, one at a reduced test pressure and one at an increased test pressure, whichever is applicable. Carbon monoxide shall not exceed 0.08% air free	
<u>Test Equipment</u> Stop watch, Pressure Meter, Analyzer for Flue Gases	
<b>Products Requiring Combustion</b>	
<u>Product</u> All products covered by this Report	<u>Frequency</u> 5 pieces per quarter

**11.5 Surface temperatures**Method

The heater shall be operated for one hour at normal inlet test pressure. The temperatures of applicable heater surfaces shall then be determined by means of the probe, Temperature measuring and accessibility probe, and shall not exceed 180°F (82 °C) above room temperaturet

Test Equipment

Stop watch, Pressure Meter,Temp Data Acquisition

**Products Requiring Surface Temperatures**Product

All products covered by this Report.

Frequency

5 pieces per quarter