

Bluetooth-enabled app revolutionizes how you monitor and optimize your LFP battery's life and performance. With real-time insights at your fingertips, you can track crucial metrics like state of charge, voltage, temperature, and more, ensuring your battery operates at peak efficiency.

LB121030

Maintenance-Free

Advantages of LFP Over SLA

- LFP batteries are equipped with an integrated heater, ensuring optimal performance even in the chilliest conditions.
- Lower cost per cycle, greater than ten times the cycle life of sealed lead-acid batteries
- Ultra-light weight; Significantly lighter than sealed lead-acid batteries
- Drop in replacement for sealed lead-acid batteries
- Faster charging as a result of higher charge current
- More usable capacity - sealed lead-acid battery capacity decreases as discharge current increases
- Includes Battery Management System (BMS) protection. Contains a circuit that fully protects itself with a Low Voltage Disconnect and a High Current Disconnect on discharge
- Balancing circuit on charge

Experience the ultimate in battery management with the **UPG BT app**, available now on the App Store.



Due to continuous improvements to our products, product may vary slightly from depiction.

Specifications:

Electrical

Nominal Voltage	12.8V
Nominal Capacity @ 77 F (25 C)	103 Ah
Maximum Series Voltage	48V (4 Max.)
Maximum Parallel Capacity	206 Ah (2 Max.)
Internal Resistance	≤8 mΩ @ 100% SOC
Self Discharge	< 3% per month
Efficiency	99%

Mechanical

Weight (approximate)	29.5 lbs (13.4 kg)
Case Material	ABS
Waterproof Rating	IP65
Chemistry	LiFePO ⁴

Discharge

Maximum Discharge Current	100A
Recommended Low Voltage Disconnect	11.2V
Low Voltage Cutoff Protection (BMS)	10.0V
Reconnect Voltage	10.4V

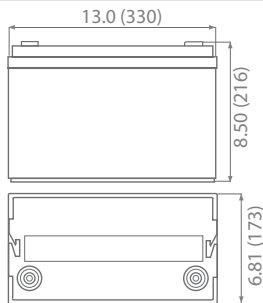
Charge

Recommended Charge Current	50A (.5C)
Maximum Charge Current	100A
Charge Voltage Range (Absorption)	14.2 - 14.6 V
BMS Charge Voltage Cutoff	14.8 V
Reconnect Voltage	14.4 V

Temperature

Discharge Temperature	-4°F - 140°F (-20°C - 60°C)
Charge Temperature	32°F - 122°F (0°C - 50°C)
Storage Temperature	14°F - 122°F (-10°C - 50°C)
BMS High Temperature Cutoff	131°F (55°C)
Reconnect Temperature	113°F (45°C)

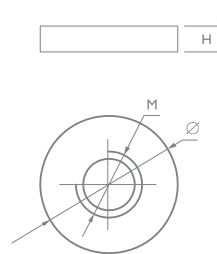
Physical Dimensions: in (mm)



L: 13.0in (330mm)
W: 6.81in (173 mm)
H: 8.50in (216mm)
 Tolerances are +/- 0.04 in. (+/- 1mm) and +/- 0.08 in. (+/- 2mm) for height dimensions. All data subject to change without notice.

Terminals:

I Series (Internal Thread)



Type	Dimension	M	Ø	H
I6		6.00 mm 0.24 in	16.0 mm 0.63 in	4.00 mm 0.16 in

Discharge Curve Per Cell

