

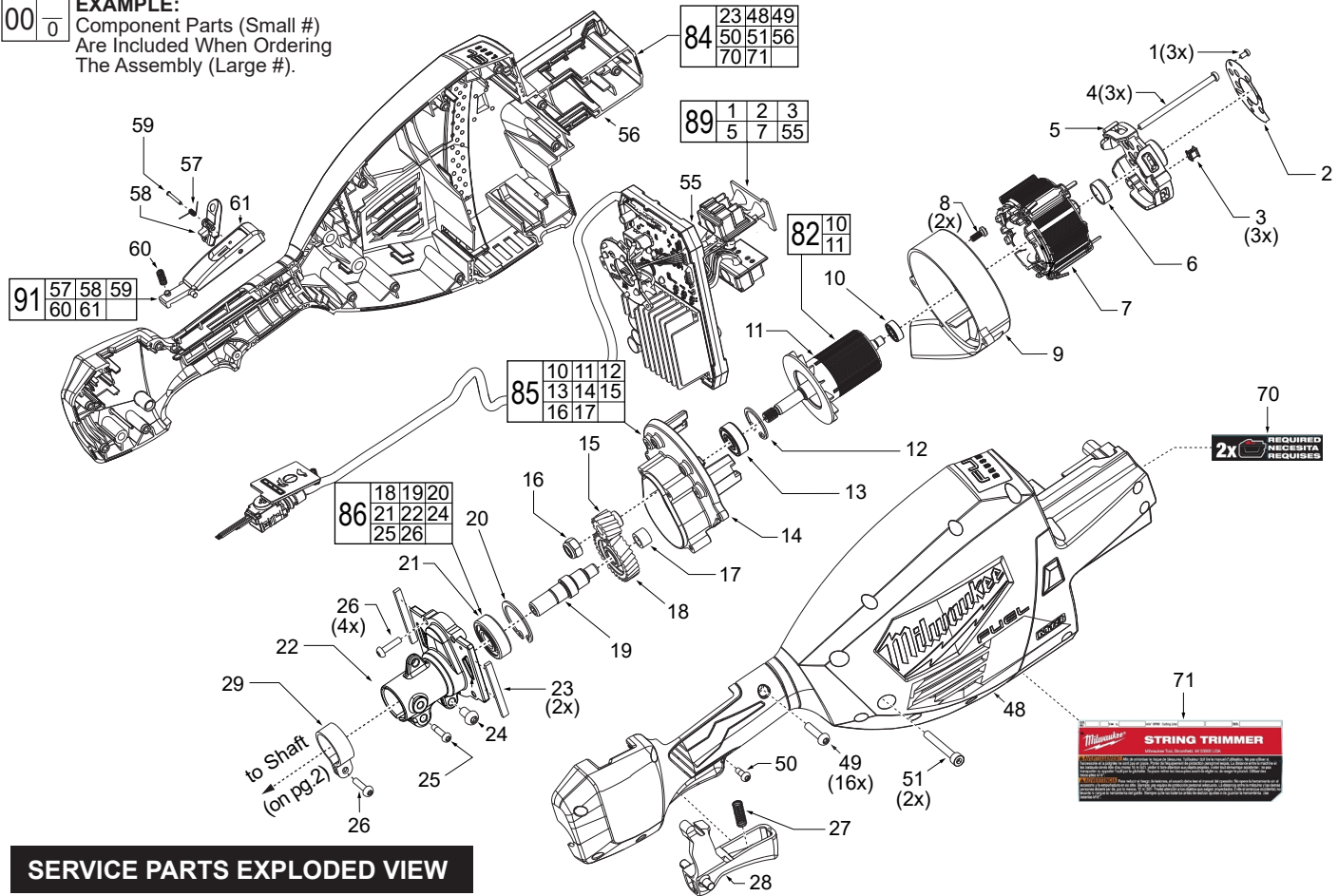


SERVICE PARTS LIST

BULLETIN NO.
54-49-3015

SPECIFY CATALOG NO. AND SERIAL NO. WHEN ORDERING PARTS		REVISED BULLETIN	DATE
M18 FUEL™ Dual Battery String Trimmer			Feb. 2024
CATALOG NO.	3006-20	SERIAL NO.	N46A
		WIRING INSTRUCTION See Page 4	

EXAMPLE:
Component Parts (Small #)
Are Included When Ordering
The Assembly (Large #).



SERVICE PARTS EXPLODED VIEW

FIG.	PART NO.	DESCRIPTION OF PART	NO. REQ.
1	05-74-0144	M3 x 5mm T-10 Torx Screw	(3)
2	-----	Hall Board	(1)
3	-----	Isolator	(3)
4	05-74-0516	M4 x 67mm Pan Hd. T-20 Torx Screw	(3)
5	-----	Motor End Cap	(1)
6	22-32-0102	Rubber Cap	(1)
7	-----	Stator	(1)
8	06-82-0161	M4 x 10mm T-20 Torx Screw	(2)
9	42-46-0012	Motor Baffle Cage	(1)
10	02-04-0163	Ball Bearings	(1)
11	-----	Rotor	(1)
12	-----	Retaining Ring	(1)
13	02-04-0164	Ball Bearing	(1)
14	28-14-0019	Gearcase Support	(1)
15	32-60-0022	Helical Pinion	(1)
16	05-55-0025	Hex Nut	(1)
17	02-04-0013	Needle Bearing	(1)
18	32-05-0037	Helical Gear	(1)
19	45-08-0047	Helix Gear Shaft	(1)
20	-----	Retaining Ring	(1)
21	-----	Ball Bearings	(1)
22	42-82-0016	Gearcase Tube Coupler	(1)
23	43-87-0042	Dumping Bar	(2)
24	05-74-0339	M8 x 13mm PH Torx T-30 Screw	(1)
25	05-78-0033	M5 x 20mm Screw	(3)
26	05-74-0202	M4 x 16mm PH T-20 Torx Screw	(5)
27	40-50-0374	Trigger Spring	(1)
28	23-66-0173	Trigger Cap	(1)
29	22-38-0111	Tube Clamp	(1)
48	-----	Handle Housing - Cover	(1)
49	05-88-1200	M4 x 16mm PH T-20 Torx Screw	(16)
50	05-71-0017	M4 x 10mm PH T-20 Torx Screw	(1)
51	05-75-0019	M5 x 37mm CH Hex Recess Screw	(2)
55	-----	PCBA	(1)

FIG.	PART NO.	DESCRIPTION OF PART	NO. REQ.
56	-----	Handle Housing - Support	(1)
57	23-66-0193	Toggle	(1)
58	-----	Trigger Spring	(1)
59	44-60-0213	Rivet Pin	(1)
60	40-50-0373	Two Action Lever Spring	(1)
61	23-66-0182	Lock-Out Trigger	(1)
70	10-22-1008	Warning Label	(1)
71	12-20-0358	Service Nameplate	(1)
82	16-01-0207	Rotor Assembly	(1)
84	31-44-0368	Housing Service Kit	(1)
85	28-14-0072	Gearcase Support Service Assembly	(1)
86	28-14-0069	Gearcase Cover Service Assembly	(1)
89	14-20-0312	Electronics Service Kit	(1)
91	31-92-0126	Lock-Off Trigger Service Kit	(1)

SCREW TORQUE SPECIFICATIONS

FIG.	PART NO.	WHERE USED	SEAT TORQUE	
			(kgf-cm)	(lb-in)
1	05-74-0144	Gear Case	2	2
4	05-74-0516	Gear Case	22±2	19±2
8	06-82-0161	Motor Baffle Cage	10±1	9±1
16	05-55-0025	Gear Case	100±8	87±7
24	05-74-0339	Gear Case	42±2	36±2
25	05-78-0033	Gear Case	60±2	52±2
26	05-74-0202	Tube Clamp/Gear Case	22±2	19±2
49	05-88-1200	Handle Housing - Cover	18±2	16±2
50	05-71-0017	Handle Housing - Cover	10±1	9±1
51	05-75-0019	Handle Housing - Cover	42±2	36±2

SERVICE PARTS EXPLODED VIEW (continued)

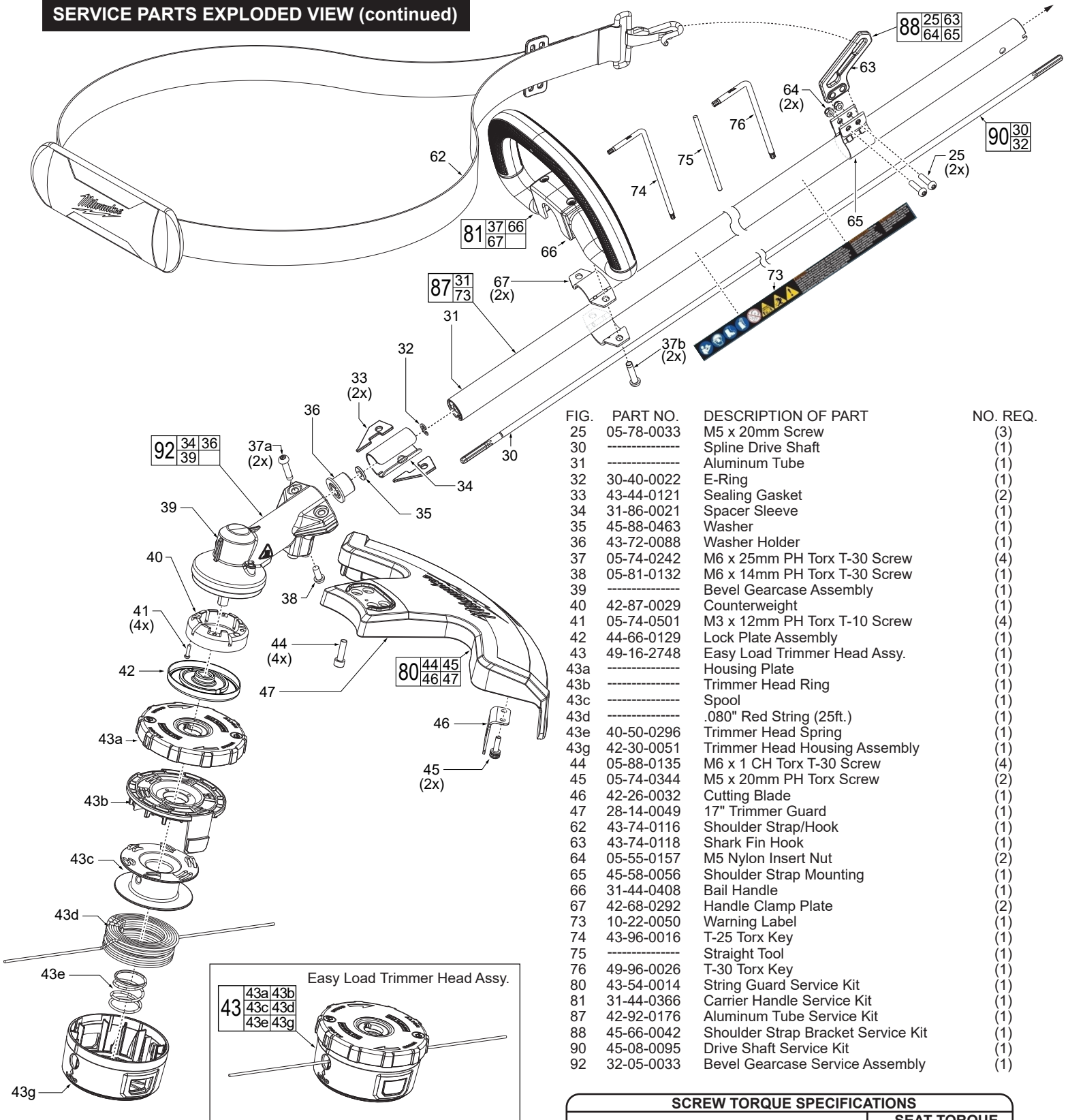
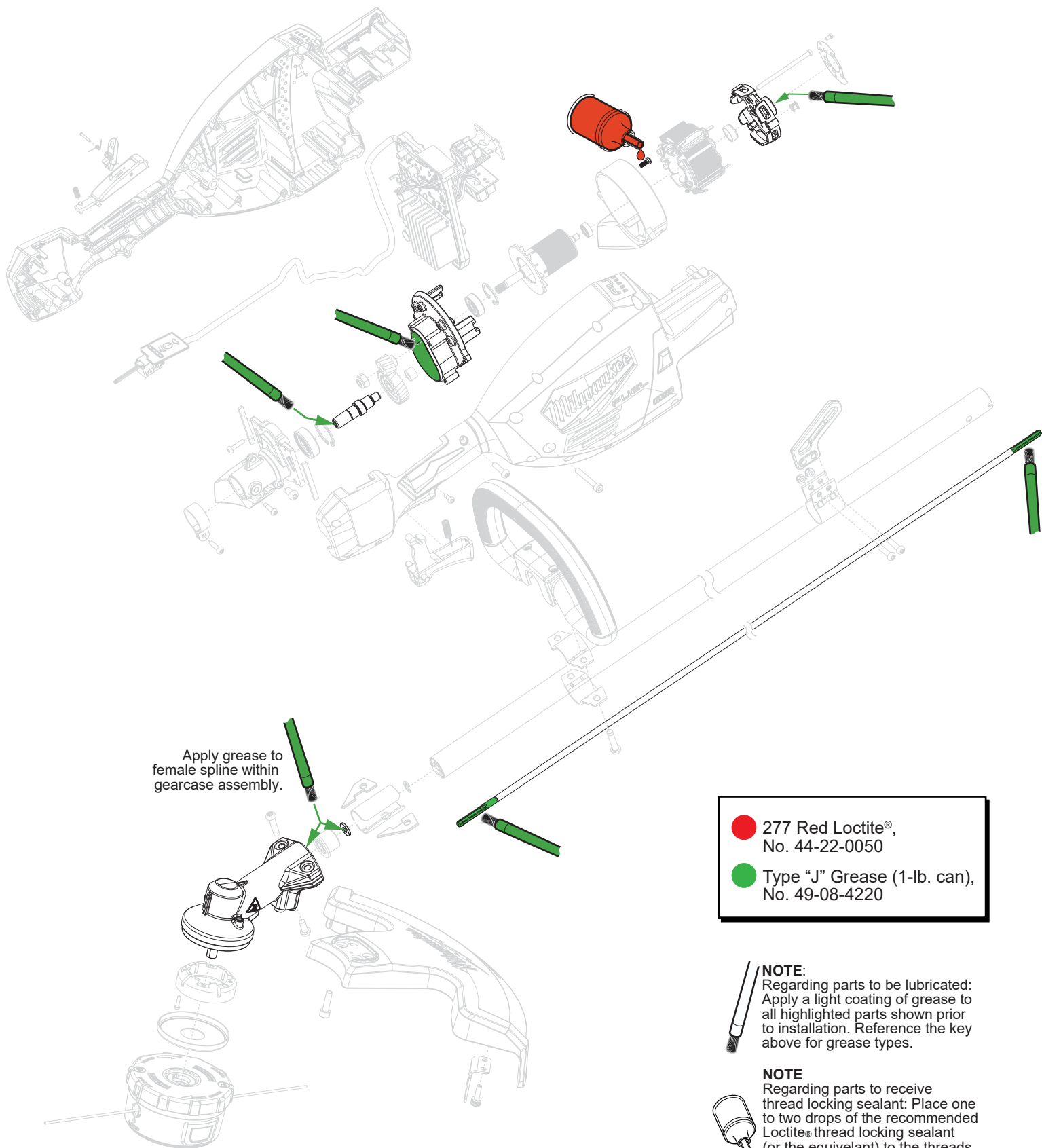


FIG.	PART NO.	DESCRIPTION OF PART	NO. REQ.
25	05-78-0033	M5 x 20mm Screw	(3)
30	-----	Spline Drive Shaft	(1)
31	-----	Aluminum Tube	(1)
32	30-40-0022	E-Ring	(1)
33	43-44-0121	Sealing Gasket	(2)
34	31-86-0021	Spacer Sleeve	(1)
35	45-88-0463	Washer	(1)
36	43-72-0088	Washer Holder	(1)
37	05-74-0242	M6 x 25mm PH Torx T-30 Screw	(4)
38	05-81-0132	M6 x 14mm PH Torx T-30 Screw	(1)
39	-----	Bevel Gearcase Assembly	(1)
40	42-87-0029	Counterweight	(1)
41	05-74-0501	M3 x 12mm PH Torx T-10 Screw	(4)
42	44-66-0129	Lock Plate Assembly	(1)
43	49-16-2748	Easy Load Trimmer Head Assy.	(1)
43a	-----	Housing Plate	(1)
43b	-----	Trimmer Head Ring	(1)
43c	-----	Spool	(1)
43d	-----	.080" Red String (25ft.)	(1)
43e	40-50-0296	Trimmer Head Spring	(1)
43g	42-30-0051	Trimmer Head Housing Assembly	(1)
44	05-88-0135	M6 x 1 CH Torx T-30 Screw	(4)
45	05-74-0344	M5 x 20mm PH Torx Screw	(2)
46	42-26-0032	Cutting Blade	(1)
47	28-14-0049	17" Trimmer Guard	(1)
62	43-74-0116	Shoulder Strap/Hook	(1)
63	43-74-0118	Shark Fin Hook	(1)
64	05-55-0157	M5 Nylon Insert Nut	(2)
65	45-58-0056	Shoulder Strap Mounting	(1)
66	31-44-0408	Bail Handle	(1)
67	42-68-0292	Handle Clamp Plate	(2)
73	10-22-0050	Warning Label	(1)
74	43-96-0016	T-25 Torx Key	(1)
75	-----	Straight Tool	(1)
76	49-96-0026	T-30 Torx Key	(1)
80	43-54-0014	String Guard Service Kit	(1)
81	31-44-0366	Carrier Handle Service Kit	(1)
87	42-92-0176	Aluminum Tube Service Kit	(1)
88	45-66-0042	Shoulder Strap Bracket Service Kit	(1)
90	45-08-0095	Drive Shaft Service Kit	(1)
92	32-05-0033	Bevel Gearcase Service Assembly	(1)

SCREW TORQUE SPECIFICATIONS


FIG.	PART NO.	WHERE USED	SEAT TORQUE	
			(kgf-cm)	(lb-in)
25	05-78-0033	Shoulder Strap Mount	60±2	52±2
37a	05-74-0242	Bevel Gear Case Assy.	42±2	36±2
37b	05-74-0242	Carrier Handle	27±2	23±2
38	05-81-0132	Bevel Gear Case Assy.	42±2	36±2
41	05-74-0501	Bevel Gear Case Assy.	10±1	9±1
43	49-16-2748	Easy Load Trimmer Hd	150±5	130±4
44	05-88-0135	Trimmer Guard	30±2	26±2
45	05-74-0344	Cutting Blade	30±2	26±2


LUBRICATION INSTRUCTIONS



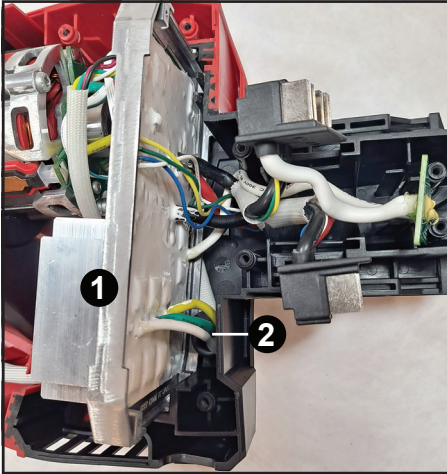
Apply grease to female spline within gearcase assembly.

-  277 Red Loctite®, No. 44-22-0050
-  Type "J" Grease (1-lb. can), No. 49-08-4220

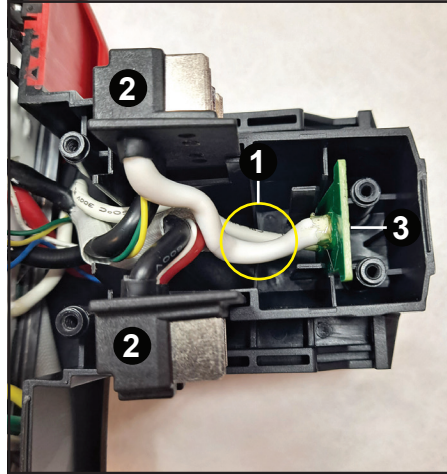
 **NOTE:** Regarding parts to be lubricated: Apply a light coating of grease to all highlighted parts shown prior to installation. Reference the key above for grease types.

 **NOTE** Regarding parts to receive thread locking sealant: Place one to two drops of the recommended Loctite® thread locking sealant (or the equivalent) to the threads of parts shown prior to installation.

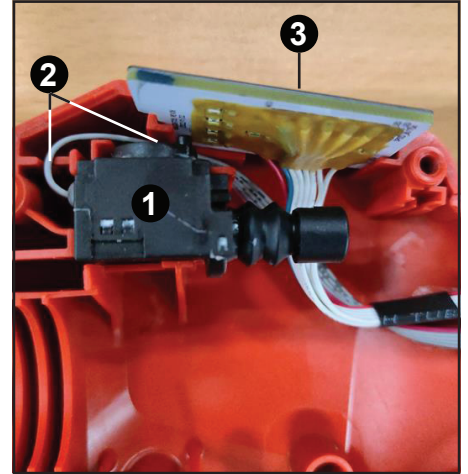
WIRE ROUTING



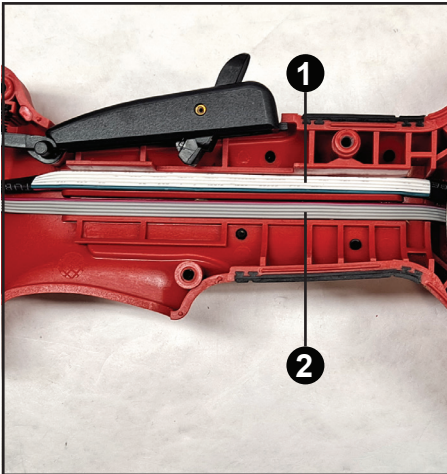
PCBA Frame (1) should be inserted into slots as shown, with motor wire (2) routed through bottom of the PCBA.



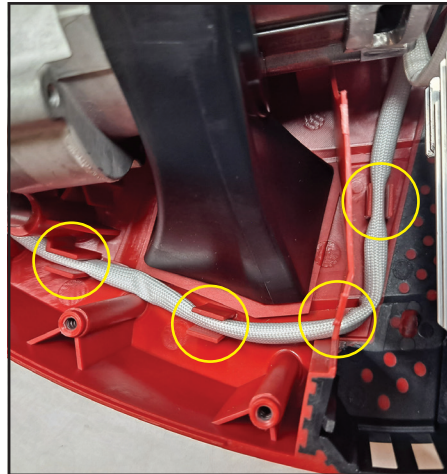
Insert thick white wires (1), terminal blocks (2), and fuse tracer (3) into slots as shown.



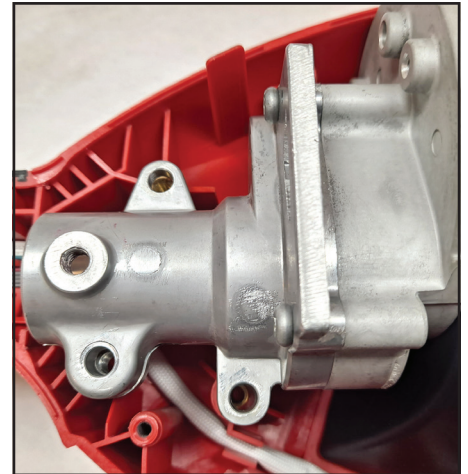
Insert switch (1), switch wire (2), and hall board (3) into slots as shown.



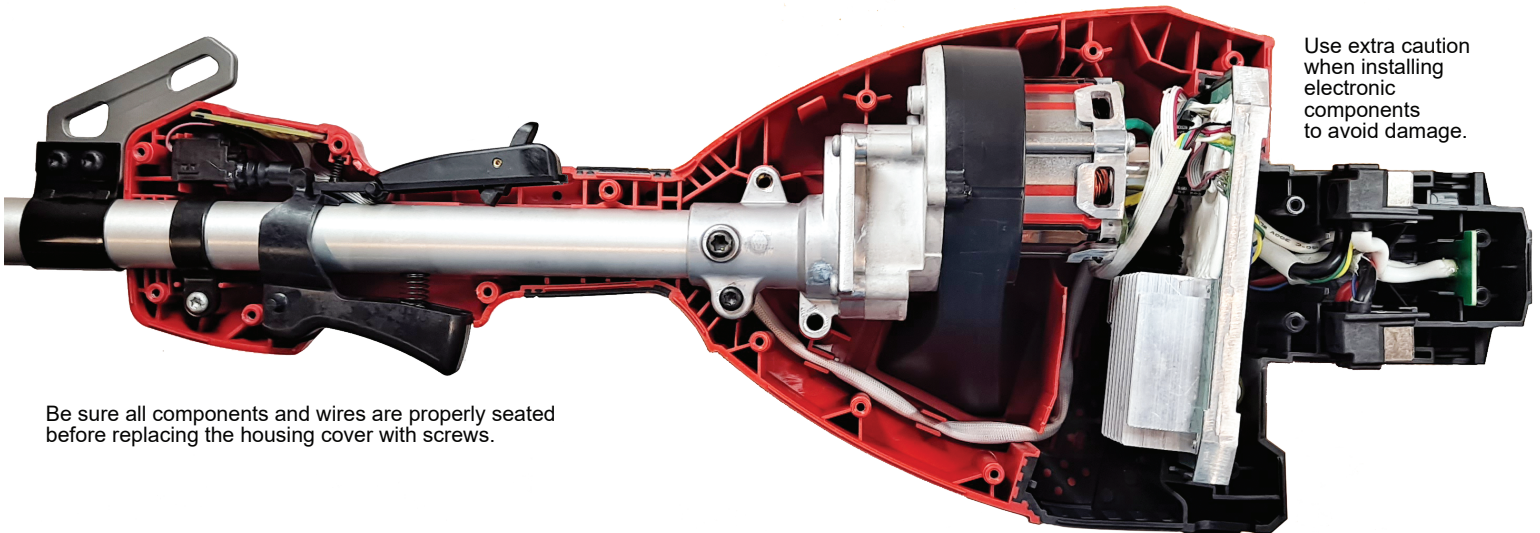
UI board wire (1) and switch wire (2) need to be pressed into channels as shown.



Press braided white wire into slots as shown.



Make sure gearcase fits properly into slots and screw holes align.



Be sure all components and wires are properly seated before replacing the housing cover with screws.

Use extra caution when installing electronic components to avoid damage.