



Heavy-Duty Air-Operated Oil Pump

With Extension Kit – 3:1 or 5:1

Owner's Manual



WARNING: Read carefully and understand all ASSEMBLY AND OPERATION INSTRUCTIONS before operating. Failure to follow the safety rules and other basic safety precautions may result in serious personal injury.

Items #58267 & #58268

READ & SAVE THESE INSTRUCTIONS

Thank you very much for choosing a Roughneck™ product!

For future reference, please complete the owner's record below:

Serial Number/Lot Date Code: _____

Purchase Date: _____

Save the receipt, warranty, and this manual. It is important that you read the entire manual to become familiar with this product before you begin using it.

This pump is designed for certain applications only. Northern Tool and Equipment is not responsible for issues arising from modification or improper use of this product such as an application for which it was not designed. We strongly recommend that this product not be modified and/or used for any application other than that for which it was designed.

For technical questions, please call **1-800-222-5381**.

Table of Contents

Intended Use.....	4
Packaging Contents.....	4
Technical Specifications	4
Important Safety Information	4
Specific Operation Warnings	6
Main Parts of Product	7
Assembly Instructions.....	8
Before Each Use.....	9
Operating Instructions.....	10
After Each Use.....	11
Maintenance	11
Troubleshooting.....	12
Parts Diagram.....	13
Parts List.....	14
Replacement Parts	15
Limited Warranty.....	16

Intended Use

The Roughneck Heavy-Duty Air-Operated Oil Pump with Extension Kit is perfect for fluid oil transfer in high volumes and longer distance applications such as truck shop service fleet facilities and in-plant applications. #58267 is suitable for use with SAE130 oil and #58268 is suitable for use with SAE240 oil. Both pumps have extension tubes.

Packaging Contents

#58267 Packaging Contents:

3:1 Heavy Duty Air- Operated Oil Pump (1) ET20460 (1) ET20670 (1)

#58268 Packaging Contents:

5:1 Heavy Duty Air- Operated Oil Pump (1) ET20460 (1) ET20670 (1)

Technical Specifications

Model	#58267	#58268
Pressure ratio	3:1	5:1
Air inlet working pressure	70-175 PSI	70-175 PSI
Max. air inlet pressure	175 PSI	175 PSI
Max. fluid pressure	520 PSI	870 PSI
Air motor effective diameter	3in.	3in.
Max. flow rate	11.9 GPM	10.6 GPM
Suction tube diameter	2 1/8in.	2 1/8in.
Suction tube length	10 5/8in.	10 5/8in.
Air inlet	1/4in. FNPT	1/4in. FNPT
Oil outlet	3/4 in. FNPT	3/4in. FNPT

Features a Heavy Duty Air-Operated Pump and two extension Tubes of ET20460 and ET20670.

Important Safety Information

WARNING

- Read and understand all instructions. Failure to follow all instructions may result in serious injury or property damage.
- The warnings, cautions, and instructions in this manual cannot cover all possible conditions or situations that could occur. Exercise common sense and caution when using this tool. Always be aware of the environment and ensure that the tool is used in a safe and responsible manner.
- Do not allow persons to operate or assemble the product until they have read this manual and have developed a thorough understanding of how it works.
- Do not modify this product in any way. Unauthorized modification may impair the function and/or safety and could affect the life of the product. There are specific applications for which the product was designed.
- Use the right tool for the job. DO NOT attempt to force small equipment to do the work of larger industrial equipment. There are certain applications for which this equipment was designed. This

product will be safer and do a better job at the capacity for which it was intended. DO NOT use this equipment for a purpose for which it was not intended.

- Industrial or commercial applications must follow OSHA requirements.

⚠WARNING

WORK AREA SAFETY

- Inspect the work area before each use. Keep work area clean, dry, free of clutter, and well-lit. Cluttered, wet, or dark work areas can result in injury. Using the product in confined work areas may put you dangerously close to cutting tools and rotating parts.
- Do not use the product where there is a risk of causing a fire or an explosion; e.g., in the presence of flammable liquids, gases, or dust. The product can create sparks, which may ignite the flammable liquids, gases, or dust.
- Do not allow the pump to come into contact with an electrical source. The tool is not insulated and contact will cause electrical shock.
- Keep children and bystanders away from the work area while operating the tool. Do not allow children to handle the product.
- Be aware of all power lines, electrical circuits, water pipes, and other mechanical hazards in your work area. Some of these hazards may be hidden from your view and may cause personal injury and/or property damage if contacted.

⚠WARNING

PERSONAL SAFETY

- Stay alert, watch what you are doing, and use common sense when operating the tool. Do not use the tool while you are tired or under the influence of drugs, alcohol, or medication. A moment of inattention while operating the tool may result in serious personal injury.
- Dress properly. Do not wear loose clothing, dangling objects, or jewelry. Keep your hair, clothing and gloves away from moving parts. Loose clothes, jewelry, or long hair can be caught in moving parts. Air vents on the tool often cover moving parts and should be avoided.
- Wear the proper personal protective equipment when necessary. Use ANSI Z87.1 compliant safety goggles (not safety glasses) with side shields, or when needed, a face shield. Use a dust mask in dusty work conditions. Also use non-skid safety shoes, hardhat, gloves, dust collection systems, and hearing protection when appropriate. This applies to all persons in the work area.
- Do not overreach. Keep proper footing and balance at all times.
- Remove keys or wrenches before connecting the tool to an air supply, power supply, or turning on the tool. A wrench or key that is left attached to a rotating part of the tool may cause personal injury.
- Secure the work with clamps or a vise instead of your hand when practical. This safety precaution allows for proper tool operation using both hands.

⚠CAUTION

PUMP USE AND CARE

- Do not force the pump. Products are safer and do a better job when used in the manner for which they are designed. Plan your work, and use the correct product for the job.
- Check for damaged parts before each use. Carefully check that the product will operate properly and perform its intended function. Replace damaged or worn parts immediately. Never operate the product with a damaged part.
- Do not use a product with a malfunctioning switch. Any power tool that cannot be controlled with the power switch is dangerous and must be repaired by an authorized service representative before using.
- Disconnect the power/air supply from the product and place the switch in the locked or off position before making any adjustments, changing accessories, or storing the tool. Such preventive safety measures reduce the risk of starting the tool accidentally.
- Store the pump when it is not in use. Store it in a dry, secure place out of the reach of children. Inspect the tool for good working condition prior to storage and before re-use.
- Use only accessories that are recommended by the manufacturer for use with your product. Accessories that may be suitable for one product may create a risk of injury when used with another tool. Never use an accessory that has a lower operating speed or operating pressure than the tool itself.
- Keep guards in place and in working order. Never operate the product without the guards in place.
- Do not leave the tool running unattended.

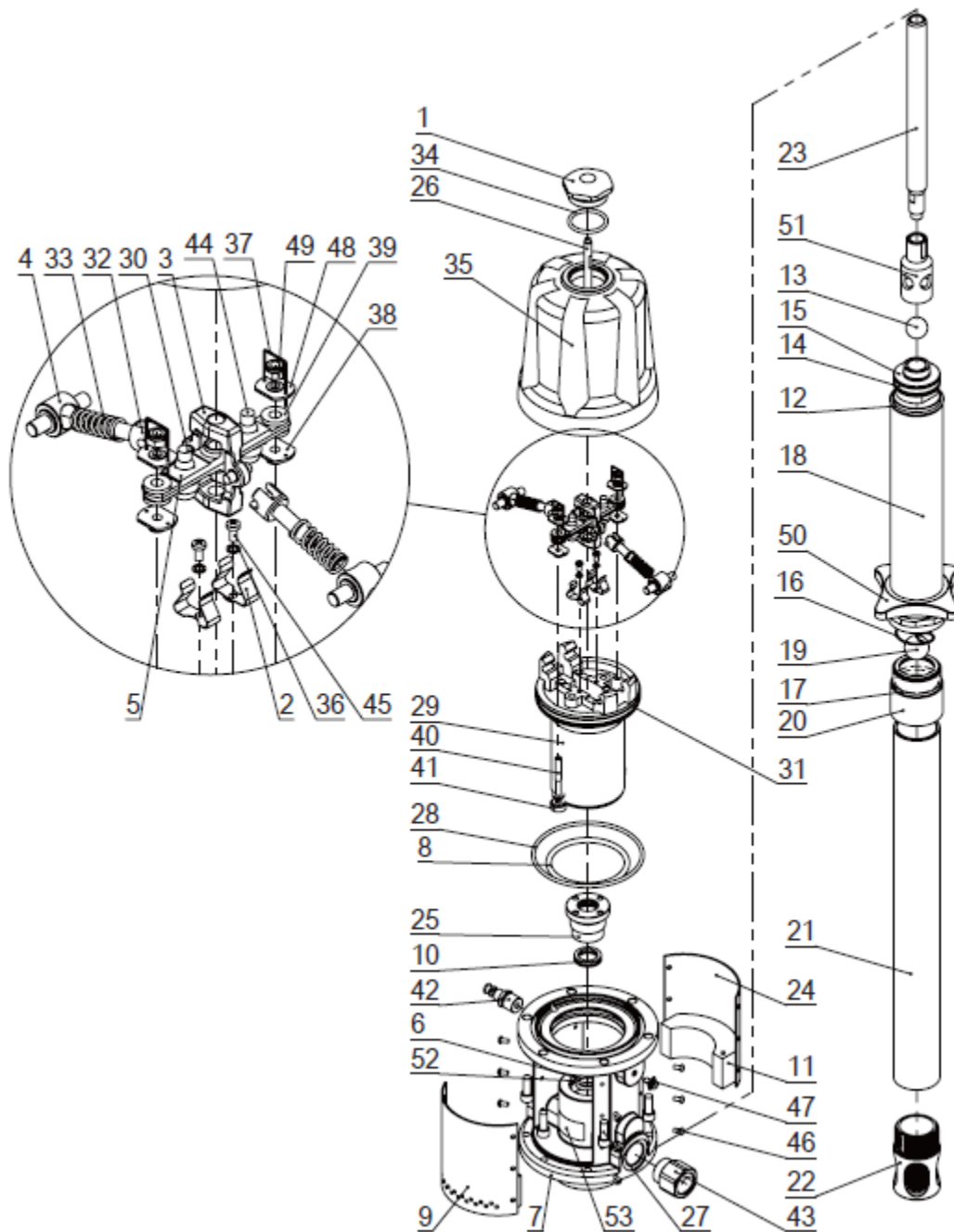
Specific Operation Warnings

⚠WARNING

- To prevent serious injury or property damage, read and understand owner's manual before operating.
- Wear ANSI Z87.1 compliant goggles and other protective gear while operating.
- Do not exceed the maximum working air pressure of 175 PSI.
- Never point the dispenser at people or animals.
- Do not use the pump near open flames. Do not smoke during this operation.
- When not in use, disconnect the air supply air to the pump.
- Inspect before each use; check that all connections are tight and secure.
- Never use product if parts are damaged; replace damaged or broken parts before operating.
- Use only original parts when repairing the pump.
- Always disconnect the air supply after use so that oil can't leak out in case one of the pump's components should break.
- The compressed air must be filtered to avoid dust and moisture into pump.

- Do not use with any liquid besides the intended oil, lubricants, or antifreeze liquids. See owner's manual for intended oil.
- Disconnect air hose and relieve air pressure before servicing.
- Always dispose of oil and other liquids according to local waste authority guidelines.
- Not for use by or around children.

Main Parts of Product





Assembly Instructions

Grounding

Before using the pump, check the grounding of the entire system to prevent fire and explosion. To reduce the risk of static sparking, each device should ground effectively.

Pump: Use a ground wire and clamp as Fig.2 shows. Remove the grounding screw, place the end of the grounding wire into the grounding hole. Lock the bolt to the pump safety.

Air and Fluid Hoses: Ground effectively.

Air Compressor: Follow manufacturer's recommendations.

Oil Control Valve: Connect the pump with a proper grounding wire. Always hold a metal part of the valve firmly to the side of a grounded metal pail, then trigger the valve.

Barrel: Place the pump into the metal barrel. If you place the metal barrel on the trolley, which you can get locally, connect the trolley plate to the electric material to guide static electricity, to avoid fire and explosion.

Other Parts: Operate with local regulation for grounding. Use a fluid supply container: Follow the local code.

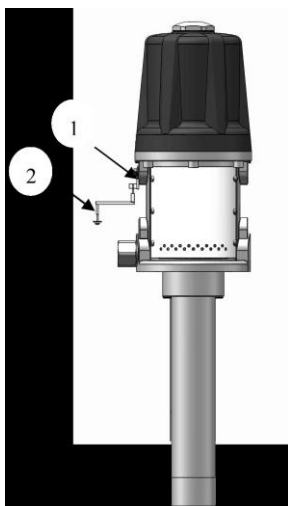


FIG.2: Grounding guide

Installation

Standard installation

- 1: Cut-off valve
- 2: Filter
- 3: Regulator
- 4: Lubricator
- 5: Control valve
- 6: Locking adapter
- 7: Hose reel

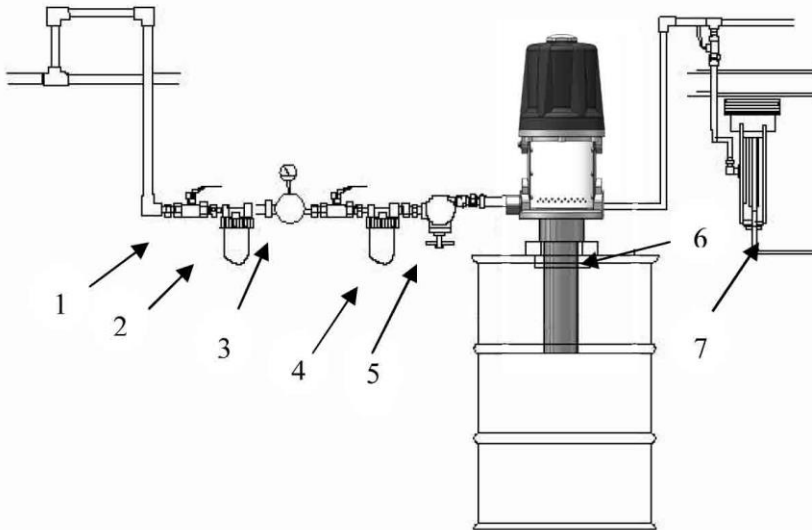


Fig.3: Oil supply system installation

The above installation is part of the oil supply system. If you need installation for the whole air circle transfer, contact the manufacturer or distributor.

Note: To avoid damage, do not hang any device at the air inlet.

- Place the pump into lock adapter (Fig 3, Part 6).
- Install to the trolley.
- Install cut-off valve (Fig 3, Part 1).
- Install filter (Fig 3, Part 2).
- Install regulator which controls the speed and adjusts the air pressure (Fig 3, Part 3).
- Install lubricator which self-lubricates (Fig 3, Part 4).
- Install control valve which controls flux. When the speed is too fast, pump will automatically self-close to avoid pump be damaged (Fig 3, Part 5).
- Connect to oil output.

Before Each Use

⚠WARNING

- Inspect before each use; check that all connections are tight and secure.
- Never use if parts are damaged or broken; replace damaged or broken parts before operating.
- Disconnect air hose and relieve air pressure before servicing.

- Pump cannot operate with an empty load or the speed will be too fast causing damage.
- If acceleration is too fast or running very slow, stop operation and check to be sure there is enough oil in the barrel. If there is insufficient oil, change the trolley and initialize the entire system.

Start Up

- If there are several pumps in the system, use the control valve to dispatch the air.
- Open the main control valve. Make sure there is safe grounding between the oil valve and the trolley (metal connection). Then, open the oil valve. Open the cut-off valve and the pump will run. Close the oil valve.
- If there are several pumps in the system, start-up each pump step-by-step with the instructions above.
- For perfect results, set up the minimum air pressure for each device.
- The pump cannot operate under an empty load.
- Relieve pressure before closing the pump.

Operating Instructions

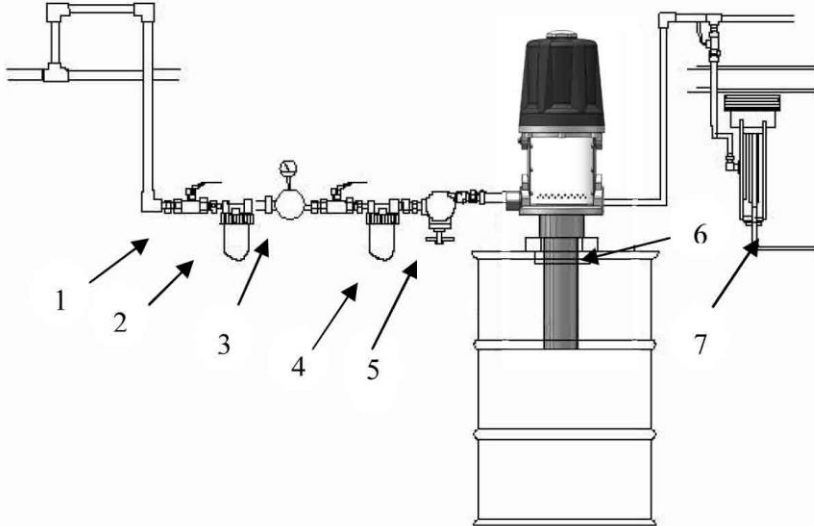
⚠WARNING

- Wear ANSI Z87.1 compliant goggles and other protective gear while operating.
- Do not exceed the maximum working air pressure of 175 PSI.
- Never point the dispenser at people or animals.
- Do not use the pump near open flames. Do not smoke during this operation.
- The compressed air must be filtered to avoid dust and moisture into pump.
- Do not use with any liquid besides the intended oil, lubricants, or antifreeze liquids. See owner's manual for intended oil.

Pressure Relief

- Injury to skin: To reduce the risk of serious injury from pressurized fluid, follow this procedure whenever you are instructed to relieve pressure:
 - Stop dispensing
 - Check, clean, or service any system equipment
 - Install or clean dispensing devices

Note: After initialize work, open the oil valve and the pump will start to work. Close the oil valve and the pump stops working.



Process

- Put the pump into lock adapter (Fig .3, Part 6).
- Install to the trolley.
- Install cut-off valve (Fig 3, Part 1).
- Install filter (Fig 3, Part 2).
- Install regulator, which controls the speed, and adjust the air pressure (Fig 3, Part 3).
- Install lubricator, which self-lubricates (Fig 3, Part 4).
- Install control valve, which controls the flux. When the speed is too fast, the pump will close automatically to avoid damage (Fig 3, Part 5).
- Connect oil output.

Pressure Relief procedure

- Turn off the cut-off valve, shut off air
- Connect the pump to the waste equipment, switch oil valve, and relief pressure
- Turn the air supply and oil fluid.
- Turn off the oil valve.

After Each Use

Disconnect the air supply after use so that oil can't leak out in case one of the pump's components should break.

Maintenance

⚠WARNING

Never allow the pump to run dry of the material being pumped. A dry pump will quickly accelerate to a high speed and possibly damage itself.

If your pump accelerates quickly, or is running too fast, stop it immediately and check the material supply. If the supply container is empty and air has been pumped into the lines, prime the pump and lines with material, or flush it and leave it filled with a compatible solvent. Be sure to eliminate all air from the material lines.

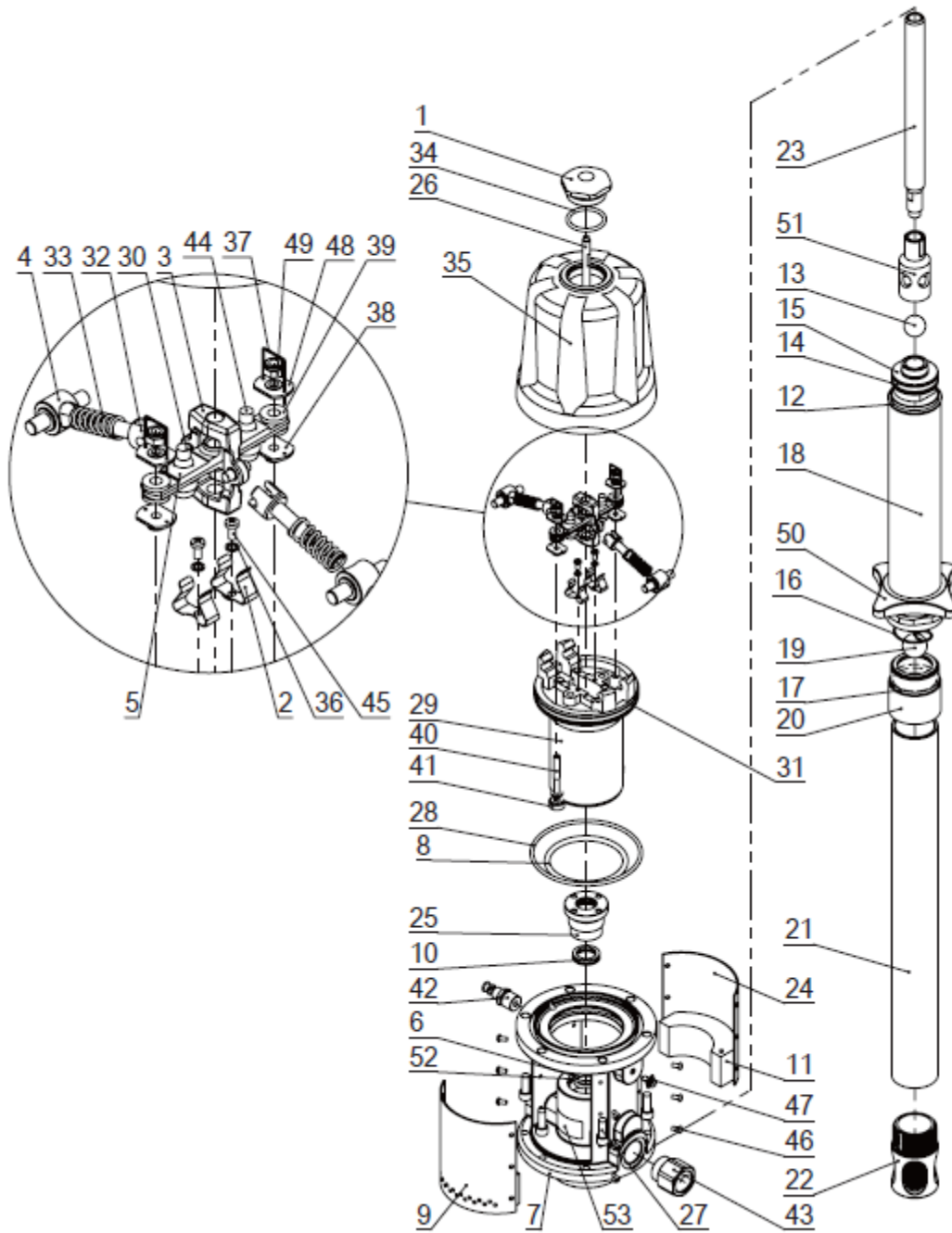
- If there are multiple pumps on the air line, close the air regulators and bleed-type master air valves to all but one pump.

- Open the master air valve from the compressor.
- Open the dispensing valve into a grounded metal waste container, making firm metal-to-metal contact between the container and valve. Open the bleed-type master air valve and open the pump air regulator slowly, just until the pump is running. When the pump is primed and all air has been pushed out of the lines, close the dispense valve.
- If you have more than one pump, repeat this procedure for each pump.
- Set the air pressure to each pump at the lowest pressure needed to achieve desired results.
- Relieve pressure before you check or service any system equipment.

Troubleshooting

Problem	Possible Cause	Corrective Action
Pumps fails to operate	Inadequate air supply pressure or restricted air lines	Increase air supply and/or clear restriction
	Closed or clogged control valves	Open and/or clean
	Clogged fluid line, hose, valve, or other accessory	Relieve pressure Clear obstruction
	Damaged air motor	Assess damage and service air motor
	Exhausted fluid supply	Refill and re-prime or flush
Continuous air exhaust	Worn or damaged air motor gasket or seal	Assess wear or damage, and service air motor
Erratic pump operation	Exhausted fluid supply	Refill and re-prime or flush
	Worn pump seals	Replace pump seals
	Damaged hose	Replace hose
Pump operates but output low	Worn piston seal	Replace piston seal
	Worn seals	Replace seals
	Clogged fluid line, hose, valve, or other accessory	Relieve pressure Clear obstruction
Leaking from muffler plates	Worn throat seal	Replace throat seal

Parts Diagram





Parts List

Part No.	Description	Quantity	Part No.	Description	Quantity
1	Air motor cover	1	28	O-ring	1
2	Spring piece	2	29	Piston	1
3	Bracket	1	30	Pin	2
4	Rope rocker	2	31	O-ring	1
5	Shaft	1	32	Rope shaft	2
6*	O-ring	1	33	Spring	2
7	Base	1	34	O-ring	1
8	O-ring	1	35	Jar body	1
9	Right silencer	1	36	Washer	2
10	U-seal	1	37	Steel wire	2
11	Sponge	2	38	Nut	4
12	O-ring	1	39	Cushion	2
13	Steel ball	1	40	Rod	2
14	O-ring	1	41	Seal	2
15	Piston	1	42	Quick plug	1
16	Circlip	1	43	Oil outlet	1
17	O-ring	1	44	Gasket	2
18	Suction tube	1	45	Screw	2
19	Steel ball	1	46	Screw	12
20	Oil inlet valve	1	47	Bolt	1
21	Extension tube	1	48	Adjustable nut	2
22	Filter	1	49	Nut	2
23	Piston shaft	1	50	Bung adapter	1
24	Left silencer	1	51	Connect tube	1
25	Transfer slipcover	1	52	O-ring	1
26	Rod	1	53	Label	2
27	Screw	6	54	ET20460	1
			55	ET20670	1

Replacement Parts

- For replacement parts and technical questions, please call Customer Service at **1-800-222-5381**.
- Not all product components are available for replacement. The illustrations provided are a convenient reference to the location and position of parts in the assembly sequence.
- When ordering parts, the following information will be required: item description, item model number, item serial number/item lot date code, and the replacement part reference number.
- The distributor reserves the rights to make design changes and improvements to product lines and manuals without notice.

Limited Warranty

Northern Tool and Equipment Company, Inc. ("We" or "Us") warrants to the original purchaser only ("You" or "Your") that the Roughneck product purchased will be free from material defects in both materials and workmanship, normal wear and tear excepted, for a period of **one year** from date of purchase. The foregoing warranty is valid only if the installation and use of the product is strictly in accordance with product instructions. There are no other warranties, express or implied, including the warranty of merchantability or fitness for a particular purpose. If the product does not comply with this limited warranty, Your sole and exclusive remedy is that We will, at our sole option and within a commercially reasonable time, either replace the product or product component without charge to You or refund the purchase price (less shipping). This limited warranty is not transferable.

Limitations on the Warranty

This limited warranty does not cover: (a) normal wear and tear; (b) damage through abuse, neglect, misuse, or as a result of any accident or in any other manner; (c) damage from misapplication, overloading, or improper installation; (d) improper maintenance and repair; and (e) product alteration in any manner by anyone other than Us, with the sole exception of alterations made pursuant to product instructions and in a workmanlike manner.

Obligations of Purchaser

You must retain Your product purchase receipt to verify date of purchase and that You are the original purchaser. To make a warranty claim, contact Us at 1-800-222-5381, identify the product by make and model number, and follow the claim instructions that will be provided. The product and the purchase receipt must be provided to Us in order to process Your warranty claim. Any returned product that is replaced or refunded by Us becomes our property. You will be responsible for return shipping costs or costs related to Your return visit to a retail store.

Remedy Limits

Product replacement or a refund of the purchase price is Your sole remedy under this limited warranty or any other warranty related to the product. We shall not be liable for: service or labor charges or damage to Your property incurred in removing or replacing the product; any damages, including, without limitation, damages to tangible personal property or personal injury, related to Your improper use, installation, or maintenance of the product or product component; or any indirect, incidental or consequential damages of any kind for any reason.

Assumption of Risk

You acknowledge and agree that any use of the product for any purpose other than the specified use(s) stated in the product instructions is at Your own risk.

Governing Law

This limited warranty gives You specific legal rights, and You also may have other rights which vary from state to state. Some states do not allow limitations or exclusions on implied warranties or incidental or consequential damages, so the above limitations may not apply to You. This limited warranty is governed by the laws of the State of Minnesota, without regard to rules pertaining to conflicts of law. The state courts located in Dakota County, Minnesota shall have exclusive jurisdiction for any disputes relating to this warranty.



Distributed by:

Northern Tool & Equipment Company, Inc.

Burnsville, Minnesota 55306

www.northerntool.com

Made in China