

STRONGWAY®

50 Ft. Grease/Oil Hose Reel with Hose OWNER'S MANUAL



WARNING:

Read carefully and understand all ASSEMBLY AND OPERATION INSTRUCTIONS before operating. Failure to follow the safety rules and other basic safety precautions may result in serious personal injury.

Items #58243, 58250, & 58269

50 FT. GREASE/OIL HOSE REEL WITH HOSE OWNER'S MANUAL

Thank you very much for choosing a Strongway product! For future reference, please complete the owner's record below:

Model: _____ Purchase Date: _____

Save the receipt, warranty and these instructions. It is important that you read the entire manual to become familiar with this product before you begin using it.

This hose reel is designed for certain applications only. Northern Tool and Equipment is not responsible for issues arising from modification or improper use of this product such as an application for which it was not designed. We strongly recommend that this product not be modified and/or used for any application other than that for which it was designed.

For technical questions, please call 1-800-222-5381.

Table of Contents

| | |
|-----------------------------------|----|
| Intended Use | 1 |
| Technical Specifications..... | 1 |
| Important Safety Information..... | 2 |
| Specific Operating Warnings..... | 3 |
| Main Parts of Product | 4 |
| Assembly Instructions..... | 5 |
| Before Each Use | 6 |
| Operating Instructions..... | 6 |
| After Each Use | 7 |
| Maintenance..... | 8 |
| Troubleshooting | 8 |
| Parts Diagram..... | 9 |
| Parts List | 10 |
| Replacement Parts..... | 10 |
| Limited Warranty..... | 11 |

Intended Use

The Strongway 50 Foot Grease and Oil Hose Reel incorporates metal forms to ensure strength and function equally well in both mobile and permanent-mount situations that are suitable for a variety of heavy-duty applications in the mining, construction, service, and marine industries. #58243 and #58269 can be used to transfer grease and oil. #58250 can be used to transfer oil. The hose reels have automatic rewind and easily install to a wall, floor, or ceiling. The reels feature an adjustable guide arm that allow for a variety of mounting orientations.

Technical Specifications

| Item | Max Pressure (PSI) | Hose Max. Temperature (°F) | Hose Capacity | | |
|--------|-----------------------|-------------------------------|----------------------|------------|--------------|
| | | | Material | I.D (inch) | Length (ft.) |
| #58243 | 5800 | 210 | S.A.E.100R2 Braid | 1/4" | 50' |
| #58250 | 2610 | 210 | S.A.E.100R2 Braid | 3/8" | |
| #58269 | 4785 | 210 | S.A.E.100R2 Braid | 3/8" | |

Important Safety Information



WARNING:

- Read and understand all instructions. Failure to follow all instructions may result in serious injury or property damage.
- The warnings, cautions, and instructions in this manual cannot cover all possible conditions or situations that could occur. Exercise common sense and caution when using this tool. Always be aware of the environment and ensure that the tool is used in a safe and responsible manner.
- Do not allow persons to operate or assemble the product until they have read this manual and have developed a thorough understanding of how it works.
- Do not modify this product in any way. Unauthorized modification may impair the function and/or safety and could affect the life of the product. There are specific applications for which the product was designed.
- Use the right tool for the job. DO NOT attempt to force small equipment to do the work of larger industrial equipment. There are certain applications for which this equipment was designed. This product will be safer and do a better job at the capacity for which it was intended. DO NOT use this equipment for a purpose for which it was not intended.
- Industrial or commercial applications must follow OSHA requirements.



WARNING:

WORK AREA SAFETY

- Inspect the work area before each use. Keep work area clean, dry, free of clutter, and well-lit. Cluttered, wet, or dark work areas can result in injury. Using the product in confined work areas may put you dangerously close to cutting tools and rotating parts.
- Do not use the product where there is a risk of causing a fire or an explosion; e.g., in the presence of flammable liquids, gases, or dust. The product can create sparks, which may ignite the flammable liquids, gases, or dust.
- Do not allow the product to come into contact with an electrical source. The tool is not insulated and contact will cause electrical shock.
- Keep children and bystanders away from the work area while operating the tool. Do not allow children to handle the product.
- Be aware of all power lines, electrical circuits, water pipes, and other mechanical hazards in your work area. Some of these hazards may be hidden from your view and may cause personal injury and/or property damage if contacted.

PERSONAL SAFETY

- Stay alert, watch what you are doing, and use common sense when operating the tool. Do not use the tool while you are tired or under the influence of drugs, alcohol, or medication. A moment of inattention while operating the tool may result in serious personal injury.
- Dress properly. Do not wear loose clothing, dangling objects, or jewelry. Keep your hair, clothing and gloves away from moving parts. Loose clothes, jewelry, or long hair can be caught in moving parts. Air vents on the tool often cover moving parts and should be avoided.
- Wear the proper personal protective equipment when necessary. Use ANSI Z87.1 compliant safety goggles (not safety glasses) with side shields, or when needed, a face shield. Use a dust mask in dusty work conditions. Also use non-skid safety shoes, hardhat, gloves, dust collection systems, and hearing protection when appropriate. This applies to all persons in the work area.
- Do not overreach. Keep proper footing and balance at all times.
- Remove keys or wrenches before connecting the tool to an air supply, power supply, or turning on the tool. A wrench or key that is left attached to a rotating part of the tool may cause personal injury.
- Secure the work with clamps or a vise instead of your hand when practical. This safety precaution allows for proper tool operation using both hands.



CAUTION:

HOSE REEL USE AND CARE

- Do not force the hose reel. Products are safer and do a better job when used in the manner for which they are designed. Plan your work, and use the correct product for the job.
- Check for damaged parts before each use. Carefully check that the product will operate properly and perform its intended function. Replace damaged or worn parts immediately. Never operate the product with a damaged part.
- Do not use a product with a malfunctioning switch. Any power tool that cannot be controlled with the power switch is dangerous and must be repaired by an authorized service representative before using.
- Disconnect the power/air supply from the product and place the switch in the locked or off position before making any adjustments, changing accessories, or storing the tool. Such preventive safety measures reduce the risk of starting the tool accidentally.
- Store the hose reel when it is not in use. Store it in a dry, secure place out of the reach of children. Inspect the tool for good working condition prior to storage and before re-use.
- Use only accessories that are recommended by the manufacturer for use with your product. Accessories that may be suitable for one product may create a risk of injury when used with another tool. Never use an accessory that has a lower operating speed or operating pressure than the tool itself.
- Keep guards in place and in working order. Never operate the product without the guards in place.
- Do not leave the tool running unattended.

Specific Operation Warnings

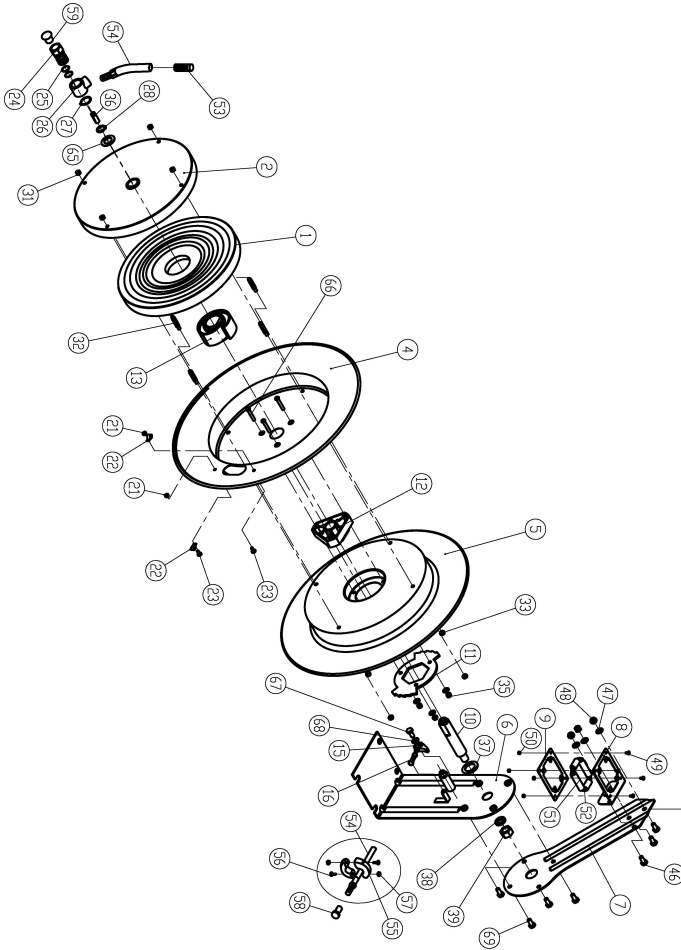


WARNING:

- To prevent serious injury or property damage, read and understand owner's manual before operating.
- Wear the proper protective equipment including ANSI Z87.1 compliant eye protection, non-slip boots, and gloves.
- Ensure that the reel is properly installed before connecting input and output hoses.
- Before connecting a pressure source, ensure that supply pressure does not exceed the maximum working pressure rating of the reel and hose.
- Never attach any tool or accessory to the hose unless it is capable of safely operating at the rated pressure.
- If a leak occurs in the hose or reel, remove system pressure immediately.
- If reel ceases to unwind or rewind, remove system pressure immediately.
- Do not kink the hose. Do not step on the hose or drive or drag objects over the hose. Do not place any objects on the hose or hose reel.
- Pull the hose from the reel by grasping the hose itself, not the valve.
- Bleed fluid/gas pressure from the reel before servicing.
- Use soap and water when checking for air leaks. Exposure of skin directly to pressurized air or fluids could result in severe bodily injury, including blood poisoning.
- Not for use by or around children.

50 FT. GREASE/OIL HOSE REEL WITH HOSE OWNER'S MANUAL

Main Parts of Product



| Part No. | Description | Q'ty | Part No. | Description | Q'ty |
|----------|-----------------|------|----------|----------------------|------|
| 1 | Spring | 1 | 11 | Locking ring | 1 |
| 2 | Drum for Spring | 1 | 12.5 | Hub Bearing Assembly | 1 |
| 4 | Drum | 1 | 13 | Core of Spring | 1 |
| 5 | Drum | 1 | 15 | Ratchet | 1 |
| 6 | Base | 1 | 16 | Spring, Dog | 1 |
| 7 | Arm | 1 | 21 | Nut | 2 |
| 8 | Guide Plate | 1 | 22 | Clamp | 2 |
| 9 | Guide Sub-Plate | 1 | 23 | Bolt | 2 |
| 10 | Axle | 1 | 24 | Swivel Spool | 1 |

50 FT. GREASE/OIL HOSE REEL WITH HOSE OWNER'S MANUAL

| Part No. | Description | Q'ty | Part No. | Description | Q'ty |
|----------|----------------|------|----------|-----------------|------|
| 25 | O-Ring | 2 | 50 | Nut | 4 |
| 26 | Swivel Body | 1 | 51 | Roller | 4 |
| 27 | Retaining Ring | 1 | 52 | Axle for roller | 4 |
| 28 | Retaining Ring | 1 | 53 | Hose Guard | 1 |
| 31 | Nut | 2 | 54 | Hose | 1 |
| 32 | Bolt | 2 | 55 | Bumper Block | 2 |
| 33 | Nut | 2 | 56 | Bolt | 2 |
| 35 | Nut | 3 | 57 | Nut | 2 |
| 36 | Set Screw | 1 | 58 | Cover | 1 |
| 37 | Washer Spacer | 1 | 59 | Cover | 1 |
| 38 | Washer | 1 | 65 | Washer Spacer | 1 |
| 39 | Nut | 1 | 66 | Bolt | 3 |
| 46 | Bolt | 3 | 67 | Bolt | 1 |
| 47 | Washer, Lock | 3 | 68 | Washer Spacer | 1 |
| 48 | Nut, Lock | 3 | 69 | Bolt | 4 |
| 49 | Bolt | 4 | | | |

Assembly Instructions

- To avoid a dangerous sudden release of pressure that can cause severe injury, ensure that the pressure source for the reel is turned off and the supply hose is not pressurized.
- Note:** Before beginning assembly/installation, purchase appropriate hardware for mounting the reel. The mounting base has four 0.5" (12.5mm) holes for mounting on a suitable flat surface.
- Note:** For overhead ceiling mounting: Install the reel at most 10 feet (3m) above the floor.
- Prior to mounting the hose reel, ensure that the supply hose pressure does not exceed the maximum working pressure of the hose reel. Also check that the pressure source is turned off and the supply hose for the reel is not pressurized.
- Unpack the reel then check that all parts are present and inspect for damage. Check reel function for smooth rotation.
- Fasten the mounting base in the desired location. Reel dimensions and the pattern of the mounting holes in the base are shown below. Tighten all hardware securely.

Installation of Reel

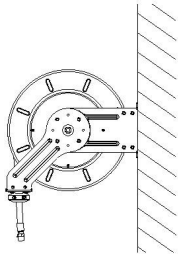
- A. For overhead ceiling mounting: Install reels at least 10 feet above the floor.
- B. If the reel you have purchased does not have hose included, you will need to purchase and attach. Refer to the Specifications section to determine appropriate hose size and length.
- C. You will need to purchase appropriate hardware for mounting your new reel.
 1. The reel base has four 0.5" (or 12.5mm) drilled holes for mounting on a suitable flat surface. Figure 2 is a template showing the correct location of the 4 mounting holes in the base.
 2. The reel is supplied with a hose guide roller bracket. The bracket position may be changed depending on the reel mounting position. Figure 2 shows "Typical Mounting Positions". If bracket position needs to be changed, do the following:
 - (1) Pull out some hose and let reel latch.
 - (2) Remove the bolts that attach the guide roller bracket to the support post.
 - (3) Rotate guide roller bracket to correct position, replace bolts and tighten.
 3. Using the four holes in the base, mount the reel in the desired location. Be sure to use appropriate hardware and tighten securely.
 4. Apply Teflon tape or pipe sealant to supply line threads, attach to reel inlet, and tighten. The other end of incoming line can now be connected to desired supply source.

50 FT. GREASE/OIL HOSE REEL WITH HOSE OWNER'S MANUAL

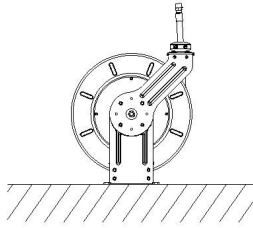
5. If hose has been supplied with reel: Apply Teflon tape or pipe sealant to outlet fitting on reel hose, then attach to desired tool, or nozzle. Check connection for leakage, also check hose reel for correct operation (details see Operation section).
6. If hose stopper adjustment is required, pull hose from reel and allow to latch at desired length. Loosen stopper bolts and slide stopper to a position close to the hose guide. Tighten stopper bolts, and unlatch the reel.

Installation of Hose

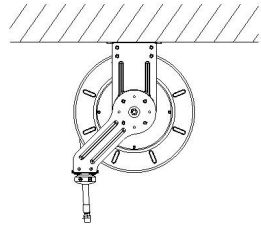
1. Securely stabilize the reel.
2. Facing the swivel fitting side of reel: Turn the drum clockwise, by hand, until the rewind spring is tight, and drum has latched. As an extra precaution while installing new hose, secure drum in the latched position.
3. Insert end of the hose through guide roller bracket, and feed through the opening in the drum flange.
4. Use Teflon tape or pipe sealant on hose fitting threads, screw fitting into swivel, and tighten. **Note:** To avoid damage to the swivel, use a wrench to support the swivel fitting while tightening the hose.
5. Attach hose stopper on the other end of hose, near the outlet fitting.
6. Carefully release drum latch, and slowly allow hose to wind onto the reel. **Note:** Final spring tension adjustment is accomplished by adding wraps of hose around the drum (to increase tension) or taking off wraps of hose (to decrease tension). Refer to: Adjustment of Spring Tension.



Wall



Floor



Ceiling

Before Each Use



WARNING:

- Before connecting a pressure source, ensure that supply pressure does not exceed the maximum working pressure rating of the reel and hose.
- Ensure that the reel is properly installed before connecting input and output hoses.
- Ensure that the hose reel is in proper working order before use.
- Inspect the hose reel fittings, alignment, hoses and components periodically before use.
- Have damaged or worn components repaired or replaced by an authorized technician.
- Use soap and water when checking for air leaks. Exposure of skin directly to pressurized air or fluids could result in severe bodily injury, including blood poisoning.

Operating Instructions



WARNING:

- Wear the proper protective equipment including ANSI Z87.1 compliant eye protection, non-slip boots, and gloves.
- Never attach any tool or accessory to the hose unless it is capable of safely operating at the rated pressure.
- If a leak occurs in the hose or reel, remove system pressure immediately.
- If reel ceases to unwind or rewind, remove system pressure immediately.

50 FT. GREASE/OIL HOSE REEL WITH HOSE OWNER'S MANUAL

- Do not kink the hose. Do not step on the hose or drive or drag objects over the hose. Do not place any objects on the hose or hose reel.
- Pull the hose from the reel by grasping the hose itself, not the valve.

1. Check reel for correct operation by slowly pulling out the hose. A “clicking” noise will be heard every half revolution of the drum.
2. To latch the reel, pull out the hose and allow it to retract after hearing the first, second, or third click.
3. To unlatch, slowly pull out the hose until the clicking noise stops, then let the hose retract until the hose stop rests against the hose guide.

Note: To avoid damage to the reel, always hold on to the hose while it is rewinding.

4. Periodically check the hose condition for wear or damage, and check the swivel fitting for leakage. Replace any worn, damaged, or leaking parts.

Adjustment of Spring Tension

1. Pull out approximately 6ft of hose and allow the drum to latch.
2. Remove hose stopper from hose, and feed hose back through guide.
3. Wrap the pulled hose one time around the drum to increase tension or un-wrap hose one time from drum to decrease tension.
4. Re-insert hose through guide, and install stopper onto hose end.
5. Unlatch the drum and check tension. Pull hose from reel, and adjust stopper position, if necessary.

Replacement of Swivel Seal

1. Turn off and disconnect supply line from swivel inlet.
 2. Remove swivel assembly from reel axle.
 3. Remove circlip from swivel, and take apart.
- Note:** You may want to remove swivel from reel hose end, but this is not necessary unless a new swivel is being installed.
4. Replace the seals and reassemble swivel.
 5. Use Teflon type or thread sealant on swivel thread fitting and reconnect the swivel thread fitting with axle.
 6. Re-connect inlet supply line.

Replacement of Hose

1. Turn off supply to reel.
2. Pull out all the old hose and lock the reel in this position. **Caution:** Make sure reel drum is securely locked and cannot rotate back.
3. Remove two hose clamps from hose.
4. Carefully disconnect hose from swivel joint on side of reel, or male fitting in axle center and remove old hose.
5. Feed new hose through guide and opening in drum, and connect to swivel. Re-install two hose clamps, on inside and outside of drum flange. Install stopper on other end of hose in the same position as before.
6. Carefully release the drum latch, and slowly allow the hose to wind onto the reel.

Note: Final spring adjustment is accomplished by adding or removing wraps of hose around the drum. (see spring tension adjustment).

After Each Use



WARNING:

- Bleed fluid/gas pressure from the reel before servicing.
- Use soap and water when checking for air leaks. Exposure of skin directly to pressurized air or fluids could result in severe bodily injury, including blood poisoning.

50 FT. GREASE/OIL HOSE REEL WITH HOSE OWNER'S MANUAL

Maintenance

Maintain your reel. It is recommended that the general condition of any tool be examined before it is used. Keep your reel in good repair by adopting a program of conscientious repair and maintenance in accordance with the recommended procedures found in this manual.

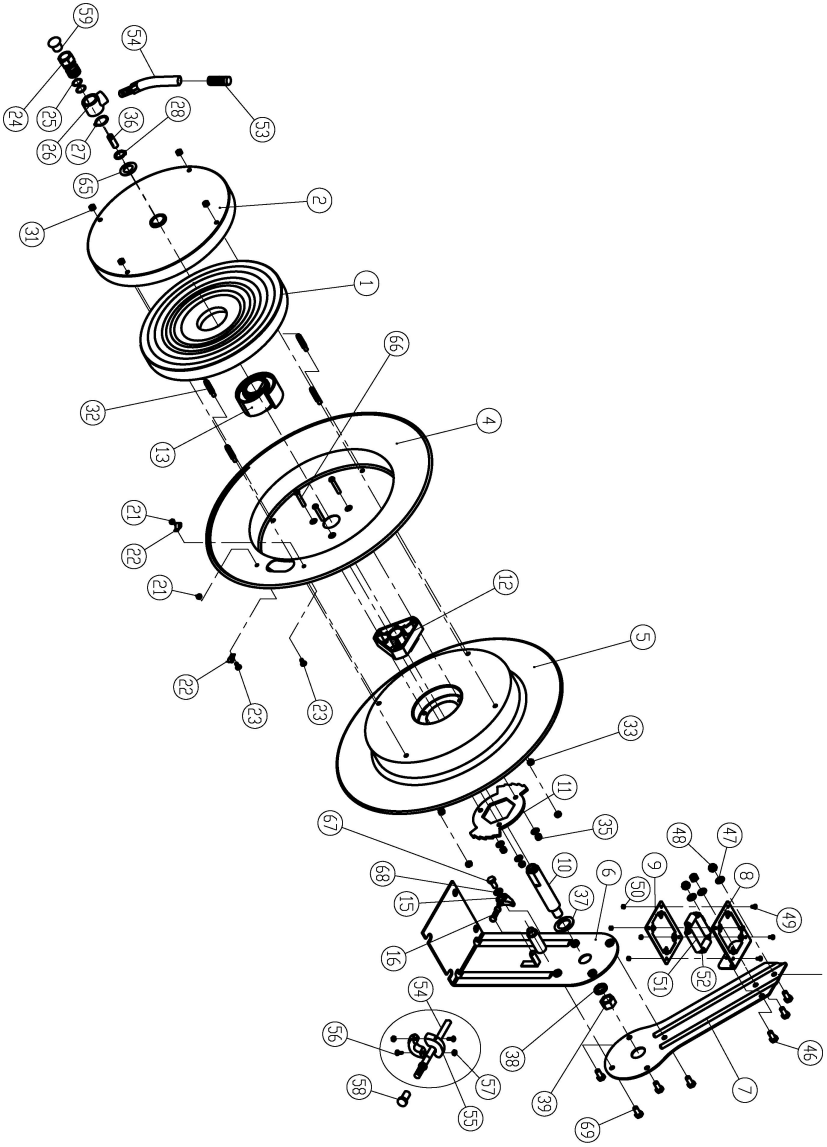
- If the rewind spring fails, for safety reasons, it is strongly recommended the replacement of the spring canister be performed by an authorized service technician. The spring can be under high tension and accidental release can cause severe personal injury.
- User servicing of the reel is limited to replacing input/output hoses and swivel maintenance only. Refer all other repairs to an authorized service technician. Failure to do so can result in person injury and/or equipment damage and may void the warranty.
- Use soap and water when checking for air leaks.

Troubleshooting

| Possible Cause | Corrective Action |
|---------------------------------|--|
| Reel will not latch. | Contact your local supplier or a qualified technician for service. |
| Reel is not retracting. | Contact your local supplier or a qualified technician for service. |
| Leaking from a hose connection. | Tighten the leaking connection. If necessary, check whether the threads are stripped or not. If stripped, contact your local supplier or a qualified technician for service. |
| Leaking from the hose. | Check the hose for damage. If damaged, contact your local supplier or a qualified technician for replacement service. |

50 FT. GREASE/OIL HOSE REEL WITH HOSE OWNER'S MANUAL

Parts Diagram



50 FT. GREASE/OIL HOSE REEL WITH HOSE OWNER'S MANUAL

Parts List

| Part No. | Description | Q'ty | Part No. | Description | Q'ty |
|----------|----------------------|------|----------|-----------------|------|
| 1 | Spring | 1 | 35 | Nut | 3 |
| 2 | Drum for Spring | 1 | 36 | Set Screw | 1 |
| 4 | Drum | 1 | 37 | Washer Spacer | 1 |
| 5 | Drum | 1 | 38 | Washer | 1 |
| 6 | Base | 1 | 39 | Nut | 1 |
| 7 | Arm | 1 | 46 | Bolt | 3 |
| 8 | Guide Plate | 1 | 47 | Washer, Lock | 3 |
| 9 | Guide Sub-Plate | 1 | 48 | Nut, Lock | 3 |
| 10 | Axle | 1 | 49 | Bolt | 4 |
| 11 | Locking ring | 1 | 50 | Nut | 4 |
| 12 | Hub Bearing Assembly | 1 | 51 | Roller | 4 |
| 13 | Spring Core | 1 | 52 | Axle for Roller | 4 |
| 15 | Ratchet | 1 | 53 | Hose Guard | 1 |
| 16 | Spring, Dog | 1 | 54 | Hose | 1 |
| 21 | Nut | 2 | 55 | Bumper Block | 2 |
| 22 | Clamp | 2 | 56 | Bolt | 2 |
| 23 | Bolt | 2 | 57 | Nut | 2 |
| 24 | Swivel Spool | 1 | 58 | Cover | 1 |
| 25 | O-Ring | 2 | 59 | Cover | 1 |
| 26 | Swivel Body | 1 | 65 | Washer Spacer | 1 |
| 27 | Retaining Ring | 1 | 66 | Bolt | 3 |
| 28 | Retaining Ring | 1 | 67 | Bolt | 1 |
| 31 | Nut | 2 | 68 | Washer Spacer | 1 |
| 32 | Bolt | 2 | 69 | Bolt | 4 |
| 33 | Nut | 2 | | | |

Replacement Parts

- For replacement parts and technical questions, please call Customer Service at 1-800-222-5381.
- Not all product components are available for replacement. The illustrations provided are a convenient reference to the location and position of parts in the assembly sequence.
- When ordering parts, the following information will be required: item description, item model number, item serial number/item lot date code, and the replacement part reference number.
- The distributor reserves the rights to make design changes and improvements to product lines and manuals without notice.

50 FT. GREASE/OIL HOSE REEL WITH HOSE OWNER'S MANUAL

Limited Warranty

Northern Tool and Equipment Company, Inc. ("We" or "Us") warrants to the original purchaser only ("You" or "Your") that the Strongway product purchased will be free from material defects in both materials and workmanship, normal wear and tear excepted, for a period of two years from date of purchase. The foregoing warranty is valid only if the installation and use of the product is strictly in accordance with product instructions. There are no other warranties, express or implied, including the warranty of merchantability or fitness for a particular purpose. If the product does not comply with this limited warranty, Your sole and exclusive remedy is that We will, at our sole option and within a commercially reasonable time, either replace the product or product component without charge to You or refund the purchase price (less shipping). This limited warranty is not transferable.

Limitations on the Warranty

This limited warranty does not cover: (a) normal wear and tear; (b) damage through abuse, neglect, misuse, or as a result of any accident or in any other manner; (c) damage from misapplication, overloading, or improper installation; (d) improper maintenance and repair; and (e) product alteration in any manner by anyone other than Us, with the sole exception of alterations made pursuant to product instructions and in a workmanlike manner.

Obligations of Purchaser

You must retain Your product purchase receipt to verify date of purchase and that You are the original purchaser. To make a warranty claim, contact Us at 1-800-222-5381, identify the product by make and model number, and follow the claim instructions that will be provided. The product and the purchase receipt must be provided to Us in order to process Your warranty claim. Any returned product that is replaced or refunded by Us becomes our property. You will be responsible for return shipping costs or costs related to Your return visit to a retail store.

Remedy Limits

Product replacement or a refund of the purchase price is Your sole remedy under this limited warranty or any other warranty related to the product. We shall not be liable for: service or labor charges or damage to Your property incurred in removing or replacing the product; any damages, including, without limitation, damages to tangible personal property or personal injury, related to Your improper use, installation, or maintenance of the product or product component; or any indirect, incidental or consequential damages of any kind for any reason.

Assumption of Risk

You acknowledge and agree that any use of the product for any purpose other than the specified use(s) stated in the product instructions is at Your own risk.

Governing Law

This limited warranty gives You specific legal rights, and You also may have other rights which vary from state to state. Some states do not allow limitations or exclusions on implied warranties or incidental or consequential damages, so the above limitations may not apply to You. This limited warranty is governed by the laws of the State of Minnesota, without regard to rules pertaining to conflicts of law. The state courts located in Dakota County, Minnesota shall have exclusive jurisdiction for any disputes relating to this warranty.

STRONGWAY®

Distributed by
Northern Tool + Equipment Co., Inc.
Burnsville, MN 55306
NorthernTool.com

Made in Vietnam