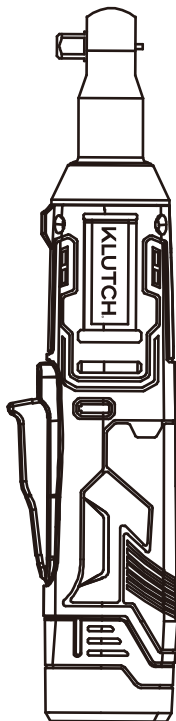


KLUTCH™

12V CORDLESS 3/8IN. RATCHET WRENCH KIT

Owner's Manual



! **WARNING:** Read carefully and understand all ASSEMBLY AND OPERATION INSTRUCTIONS before operating. Failure to follow the safety rules and other basic safety precautions may result in serious personal injury.

Item # 5797004

READ & SAVE THESE INSTRUCTIONS

Thank you very much for choosing a KLUTCH product!

For future reference, please complete the owner's record below:

Serial Number/Lot Date Code: _____

Purchase Date: _____

Save the receipt, warranty, and this manual. It is important that you read the entire manual to become familiar with this product before you begin using it.

This 12V Cordless 3/8in. Ratchet Wrench Kit is designed for certain applications only. Northern Tool and Equipment is not responsible for issues arising from modification or improper use of this product such as an application for which it was not designed. We strongly recommend that this product not be modified and/or used for any application other than that for which it was designed.

For technical questions, please call **1-866-915-8626**.

GENERAL SAFETY RULES

Work Place

- Keep the workplace clean and bright. Chaos and dark places can cause an accident.
- Do not operate electric tools in explosive atmospheres, in the presence of explosive liquids, gases or dust. The spark generated by the power tool ignites dust or gas.
- Operate the power tools when children and bystanders are not present. Distractions can cause you to lose attention and possibly control of the tool.

Electrical safety

- Avoid contacting with the ground surface, such as pipes, heat sinks and refrigerators. If your body is grounded, it will increase the risk of electric shock.
- Do not expose the power tool to rain or moisture. Water entering the power tool will increase the risk of electric shock.

Personal safety

- Be alert, pay attention to the operation and stay awake when operating the power tool. Do not operate the power tool with fatigue, medication, alcohol, or therapeutic response.
- Inattention during operation of the power tool can result in serious personal injury.
- Use safety devices. Always wear goggles. Safety devices, such as dust masks under suitable conditions, non-slip safety shoes, helmets, hearing protection and other devices can reduce personal injury.
- Remove all adjustment keys or wrenches before the power tool is switched on. A wrench or key left on a rotating part of a power tool can cause personal injury.
- Don't extend your hands too far. Always pay attention to the balance of your feet and body, so that you can control the power tool well in case of an accident.
- Dress properly. Do not wear loose clothing or jewelry. Keep your hair, clothes and sleeves away from moving parts. Loose clothing, ornaments or long hair may be involved in moving parts.

GENERAL SAFETY RULES

- If provided with the chip removal device, dust collection device connected to the device, make sure they are connected and used properly. The use of these devices reduces the risk of debris.

Power tools use and precautions

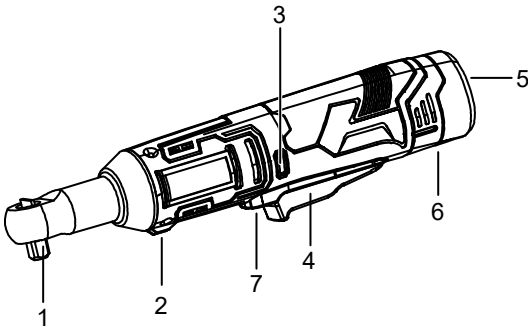
- Do not abuse the power tool, use the appropriate power tool according to the application. Choosing the right designed power tool will make your work more efficient and safer.
- If the switch can not be switched on or off, the power tool can not be used. Power tools that can not be controlled by switches are dangerous and must be repaired.
- Store the idle power tools out of the range of children and do not operate the power tools with those who are not familiar with the power tools or who do not understand them. Power tools are dangerous in the hands of untrained users.
- Maintenance of power tools. Check the moving parts, damage to the parts and other conditions that affect the operation of the electric tool. If damaged, the power tool must be repaired before use. Many accidents are caused by poorly maintained power tools.
- Keep the cutting tool sharp and clean. A well-maintained tool with a sharp cutting edge is not easy to jam and easy to control.
- When using power tools, attachments, bits, etc., follow the instruction manual and the specific type of power required to use the power tool, taking into account the operating conditions and the operations performed.

Repair

- Send your power tool to a professional service technician and use the same spare parts for replacement. This will ensure the safety of the repaired power tool.
- Recharge battery pack every 3 months if not used. This can help prolong the battery pack life.

PRODUCT INTRODUCTION

1. 3/8" output shaft
2. Flashlight
3. Battery indicator
4. Paddle switch
5. Battery
6. Battery button
7. Security lock

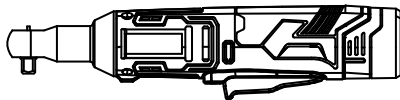


Basic Specification	
Rated Voltage	12V
No Load Speed	0-275rpm
Output shaft	3/8"
Max Torque	40 ft.lbs
Battery Capacity	2000mAH
Input	120VAC 60Hz 50W
Output	12VDC 2400mA

OPERATION INSTRUCTIONS

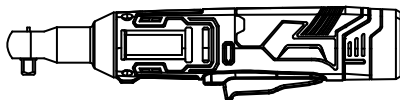


1. By adjusting the knob of ratchet head to choose whether to tighten or loosen the nut/bolt. Turn to F (forward) to tighten the bolt; Turn to R (reverse) to take off the bolt.



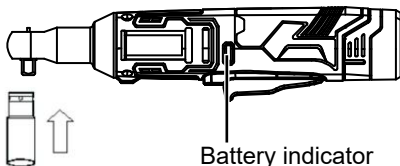
↑ Set to work

2. When pressing the paddle switch, the ratchet wrench will begin working.



↓ Stop working

3. When loosening the paddle switch, the machine will stop working.



Battery indicator

4. Installing the sleeve: insert the sleeve according to the directions.

The battery capacity is indicated by 3 lights:

- Red & yellow & green 3 lights are on: >70%
- Red & yellow lights are on: 20-70%
- Only red LED is on: <20%, the battery should be charged.

OPERATION INSTRUCTIONS



This power ratchet wrench can only be used as auxiliary tool to tighten or loosen the nut. Do not use as a manual wrench.

When it reaches the maximum torque, do not manually apply more torque to loosen or tighten the bolt. Use over the maximum torque will damage ratchet.

Important safety precautions for battery packs

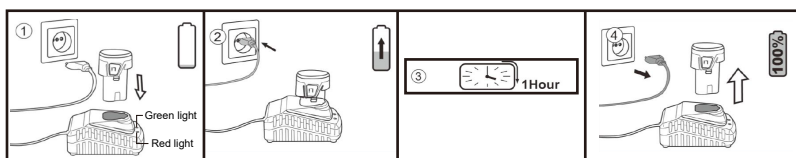
- Before using the battery pack, please carefully read the relevant instructions. (1) the charger (2) the battery pack and (3) the warning mark on the product that requires the use of the battery.
- Do not disassemble the battery pack.
- If the electrolyte splashed into eyes, immediately rinse with water and seek medical treatment otherwise it may lead to blindness.
- When battery pack is not in use, keep it away from other metal objects like paper clips, coins, keys, nails, screws, or other small metal objects that can make a connection from one terminal to another. Shorting the terminals together may cause burns or fire.
- Tools and battery packs shall not be stored where the temperature is likely to reach or exceed 50°C(122.F).

OPERATION INSTRUCTIONS

- If the battery pack is badly damaged or completely depleted, it must not be burned because the battery pack will explode in the fire.
- Be careful not to drop the battery pack, vibrate it, bump the battery, use it as a hammer, etc.

Keep the maximum battery life expectation!

- Charge the battery pack before it is fully discharged. When you find the machine power is insufficient, please stop the machine and charge the battery. Do not overcharge the battery pack.
- Excessive charging will shorten battery life.

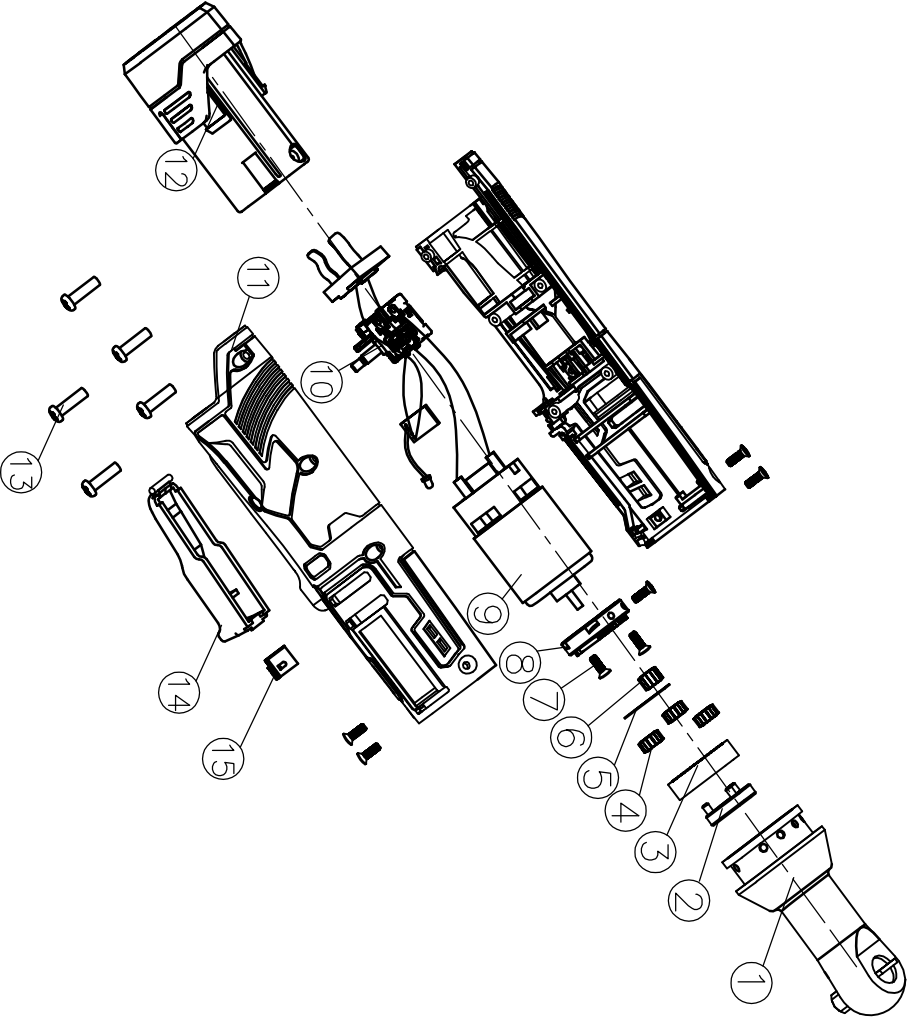


- When the charger is connected to AC household current, the power indicator green light is on.
- Insert the battery pack properly into the battery charger, the red light is on. The charging process starts.
- After about 50min to 1 hour, the charging is complete and the green light is on.
- Pull out the charger plug, and then pull off the battery pack from the charger.

COMPONENT LIST

No.	Name	Qty
1	Ratchet head	1
2	Star frame	1
3	Inside circle	1
4	Star gear	3
5	Washer25.8*18*1	1
6	Motor gear	1
7	Screw M3*10	7
8	Motor seat	1
9	Motor	1
10	Switch	1
11	Left and right housing	1
12	Battery pack	1
13	Screw ST3*14	6
14	Paddle switch	1
15	Self-lock button	1

EXPLODED VIEW



REPLACEMENT PARTS

- For replacement parts and technical questions, please call Customer Service at 1-866-915-8626.
- Not all product components are available for replacement. The illustrations provided are a convenient reference to the location and position of parts in the assembly sequence.
- When ordering parts, the following information will be required: item description, item model number, item serial number/item lot date code, and the replacement part reference number.
- The distributor reserves the rights to make design changes and improvements to product lines and manuals without notice.

LIMITED WARRANTY

Limited Warranty

- Northern Tool and Equipment Company, Inc. (“We” or “Us”) warrants to the original purchaser only (“You” or “Your”) that the KLUTCH product purchased will be free from material defects in both materials and workmanship; normal wear and tear excepted, for a period of one year from date of purchase. The foregoing warranty is valid only if the installation and use of the product is strictly in accordance with product instructions. There are no other warranties, express or implied, including the warranty of merchantability or fitness for a particular purpose. If the product does not comply with this limited warranty, Your sole and exclusive remedy is that We will, at our sole option and within a commercially reasonable time, either replace the product or product component without charge to You or refund the purchase price (less shipping). This limited warranty is not transferable.

Limitations on the Warranty

- This limited warranty does not cover: (a) normal wear and tear; (b) damage through abuse, neglect, misuse, or as a result of any accident or in any other manner; (c) damage from misapplication, overloading, or improper installation; (d) improper maintenance and repair; and (e) product alteration in any manner by anyone other than Us with the sole exception of alterations made pursuant to product instructions and in a workmanlike manner.

Obligations of Purchaser

- You must retain Your product purchase receipt to verify date of purchase and that You are the original purchaser. To make a warranty claim, contact Us at 1-866-915-8626, identify the product by make and model number, and follow the claim instructions that will be provided. The product and the purchase receipt must be provided to Us in order to process Your warranty claim. Any returned product that is replaced or refunded by Us becomes our property. You will be responsible for return shipping costs or costs related to Your return visit to a retail store.

Remedy Limits

- Product replacement or a refund of the purchase price is Your sole remedy under this limited warranty or any other warranty related to the product. We shall not be liable for service or labor charges or damage to Your property incurred in removing or replacing

LIMITED WARRANTY

- the product; any damages, including, without limitation, damages to tangible personal property or personal injury, related to Your improper use, installation or maintenance of the product or product component; or any indirect, incidental or consequential damages of any kind for any reason.

Assumption of Risk

- You acknowledge and agree that any use of the product for any purpose other than the specified use (s) stated in the product instruction is at Your own risk.

Governing Law

- This limited warranty gives You specific legal rights, and You also may have other rights which vary from State to State. Some states do not allow limitations or exclusions on implied warranties or incidental or consequential damages. So, the above limitations may not apply to You. This limited warranty is governed by the laws of the State of Minnesota, without regard to rules pertaining to conflicts of law. The state courts located in Dakota County, Minnesota shall have exclusive jurisdiction.

KLUTCH™

Distributed by:

Northern Tool & Equipment Company, Inc.

Burnsville, Minnesota 55306

www.northerntool.com

Made in China