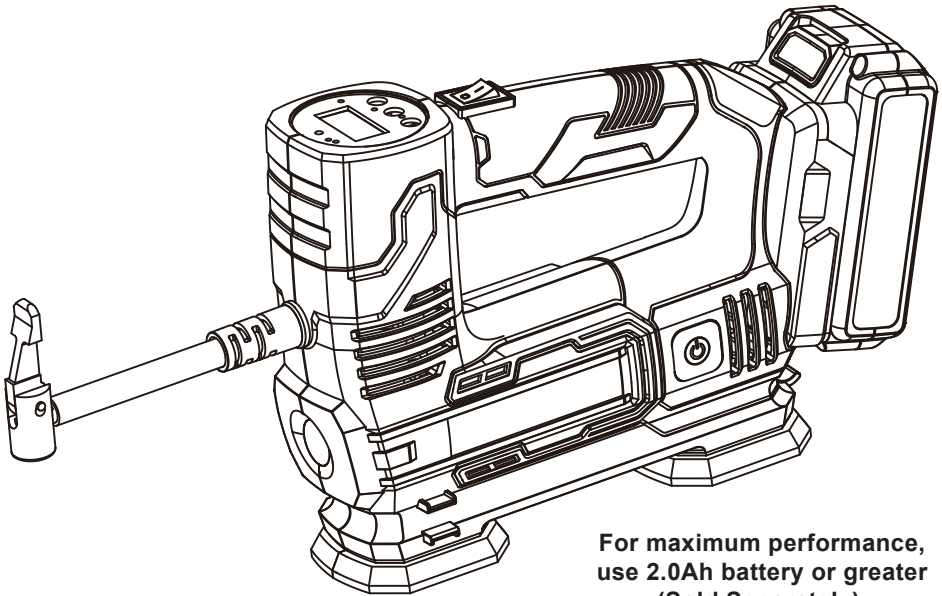


# KLUTCH™

## 20V CORDLESS INFLATOR

### Owner's Manual



For maximum performance,  
use 2.0Ah battery or greater  
(Sold Separately)



**WARNING:** Read carefully and understand all ASSEMBLY AND OPERATION INSTRUCTIONS before operating. Failure to follow the safety rules and other basic safety precautions may result in serious personal injury.

**Item # 5796917**

**READ & SAVE THESE INSTRUCTIONS**

Thank you very much for choosing a KLUTCH product!

For future reference, please complete the owner's record below:

Serial Number/Lot Date Code: \_\_\_\_\_

Purchase Date: \_\_\_\_\_

Save the receipt, warranty, and this manual. It is important that you read the entire manual to become familiar with this product before you begin using it.

This 20V Cordless Inflator is designed for certain applications only. Northern Tool and Equipment is not responsible for issues arising from modification or improper use of this product such as an application for which it was not designed. We strongly recommend that this product not be modified and/or used for any application other than that for which it was designed.

For technical questions, please call **1-866-915-8626**.

## IMPORTANT SAFETY INSTRUCTIONS

READ AND UNDERSTAND ALL INSTRUCTIONS. Failure to follow all instructions listed below, may result in electric shock, fire and/or serious personal injury.



When using electric appliances, basic precautions should always be followed, including the following.



### WORK AREA

1. Keep your work area clean and well lit. Cluttered benches and dark areas invite accidents. Keep bystanders, children, and visitors away while operating an inflator. Distractions can cause you to lose control.
2. Operate inflator in an open area at least 18 in. away from any wall or object that could restrict the flow of fresh air to ventilation openings.

### ELECTRICAL SAFETY

1. To reduce the risk of electrical shock, do not put inflator in water or other liquid. Do not place or store appliance where it can fall or be pulled into a tub or sink.
2. Use this product only with batteries and chargers.

### PERSONAL SAFETY

1. Stay alert, watch what you are doing and use common sense when operating an inflator. Do not use inflator while tired or under the influence of drugs, alcohol, or medication. A moment of inattention while operating inflator may result in serious personal injury.
2. Dress properly. Do not wear loose clothing or jewelry. Contain long hair. Keep your hair, clothing, and gloves away from moving parts. Loose clothes, jewelry, or long hair can be caught in moving parts.
3. Do not overreach. Keep proper footing and balance at all times. Proper footing and balance enables better control of the inflator in unexpected situations.
4. Use safety equipment. Always wear eye protection. Dust mask, non-skid safety shoes, hard hat, or hearing protection must be used for appropriate conditions.
5. Eye protection is required to guard against flying fasteners and debris which could cause severe eye injury.

## **IMPORTANT SAFETY INSTRUCTIONS**

6. Do not wear loose clothing or jewelry. Contain long hair. Loose clothes, jewelry, or long hair can be drawn into air vents.
7. Do not use on a ladder or unstable support. Stable footing on a solid surface enables better control of the inflator in unexpected situations.
8. Do not disassemble the inflator.
9. Do not operate inflator near flammable liquids or in gaseous or explosive atmospheres. Internal sparks may ignite fumes.
10. Do not store your inflator in a damp or wet location. Do not store in locations where the temperature is less than 50°F or more than 100°F.

### **INFLATOR USE AND CARE**

1. Check hoses for weak or worn condition before each use, making certain all connections are secure. Do not use if defect is found. Purchase a new hose or notify an authorized service center for examination or repair.
2. Release all pressures within the system slowly. Dust and debris may be harmful.
3. Do not use inflator if switch does not turn it on or off. An inflator that cannot be controlled with this switch is dangerous and must be repaired.
4. Place the switch in off position before making any adjustments, changing accessories, or storing the inflator. Such preventive safety measures reduce the risk of starting the inflator accidentally.
5. Store idle inflators out of reach of children and other untrained persons. Inflators are dangerous in the hands of untrained users.
6. Check for misalignment or binding of moving parts, breakage of parts, and any other condition that may affect the inflator's operation. If damaged, have the inflator serviced before using. Many accidents are caused by poorly maintained tools.
7. Use only accessories that are recommended by the manufacturer for your model. Accessories that may be suitable for one inflator may create a risk of injury when used on another inflator.

## **IMPORTANT SAFETY INSTRUCTIONS**

8. Keep the inflator and its handle dry, clean and free from oil and grease. Always use a clean cloth when cleaning. Never use brake fluids, gasoline, petroleum- based products, or any strong solvents to clean your inflator. Following this rule will reduce the risk of loss of control and deterioration of the enclosure plastic.
9. Never point any inflator toward yourself or others.
10. Do not exceed the pressure rating of any component in the system.
11. Protect material lines and air lines from damage or puncture. Keep hose and power cord away from sharp objects, chemical spills, oil, solvents, and wet floors.

### **SERVICE**

1. Inflator service must be performed only by qualified repair personnel. Service or maintenance performed by unqualified personnel may result in a risk of injury.
2. When servicing an inflator, use only identical replacement parts. Follow instructions in the Maintenance section of this manual. Use of unauthorized parts or failure to follow Maintenance instructions may result in a risk of shock or injury.

## **SAFETY PRECAUTIONS FOR INFLATOR**

1. Know your inflator. Read operator's manual carefully. Learn its applications and limitations, as well as the specific potential hazards related to this tool. Following this rule will reduce the risk of electric shock, fire, or serious injury.
2. Risk of bursting. Do not operate inflator to result in output pressure greater than marked maximum pressure of item to be inflated. Do not use at pressure greater than 6.8 Bar.
3. To reduce the risk of electric shock, do not expose to rain. Store indoors.

## SAFETY PRECAUTIONS FOR INFLATOR

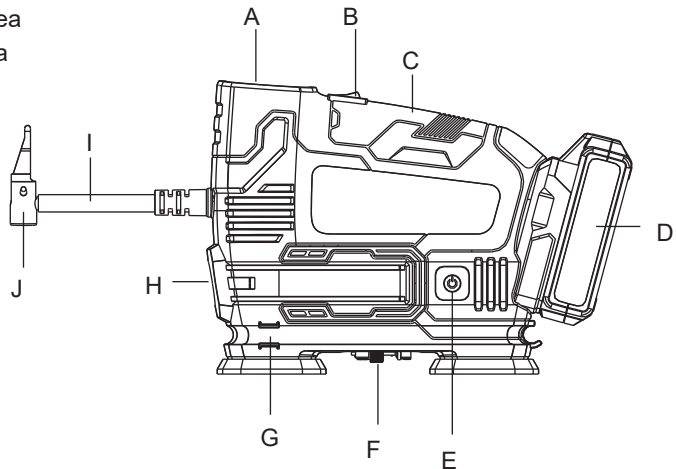
4. Inspect unit for cracks, pin holes, or other imperfections that could cause inflator to become unsafe. Never cut or drill holes in the inflator.
5. Make sure the hose is free of obstructions or snags. Entangled or snarled hoses can cause loss of balance or footing and may become damaged.
6. Use the inflator only for its intended use. Do not alter or modify the unit from the original design or function.
7. Always be aware that misuse and improper handling of this inflator can cause injury to yourself and others.
8. Never leave an inflator unattended with the air hose attached to the item being inflated.
9. Do not continue to use an inflator or hose that leaks air or does not function properly.
10. Always disconnect the air supply and power supply before making adjustments, servicing an inflator, or when an inflator is not in use.
11. Do not attempt to pull or carry the inflator by the hoses.
12. Always follow all safety rules recommended by the manufacturer of your inflator, in addition to all safety rules for the inflator. Following this rule will reduce the risk of serious personal injury.
13. Do not use inflator as a breathing device.
14. Never direct a jet of compressed air toward people or animals. Take care not to blow dust and dirt towards yourself or others. Following this rule will reduce the risk of serious injury.
15. Do not use this inflator to spray chemicals. Your lungs can be damaged by inhaling toxic fumes.
16. Check damaged parts. Before further use of the inflator or air tool, a guard or other part that is damaged should be carefully checked to determine that it will operate properly and perform its intended function.

## SAFETY PRECAUTIONS FOR INFLATOR

17. Inspect tool cords periodically and, if damaged, have repaired at your nearest Authorized Service Center. Constantly stay aware of cord location. Following this rule will reduce the risk of electric shock or fire.
18. Risk of bursting. Carefully monitor objects during inflation.
19. To reduce the risk of over inflation, use a reliable pressure gauge periodically during inflation. The pressure gauge on the inflator is for reference only and is therefore not binding for exact values.
20. Never leave the inflator unattended during inflation.
21. Allow pump to cool for five (5) minutes after each ten (10) minutes of continuous use. Never block the inflating or deflating outlets while operating.
22. Save these instructions. Refer to them frequently and use them to instruct others who may use this inflator. If you lend someone this inflator, lend them these instructions also.

## FUNCTION

- A. Digital pressure gauge
- B. Start switch
- C. Rubber-covered handle
- D. Battery(Sold Separately)
- E. LED light start button
- F. Nozzle storage area
- G. Hose storage area
- H. LED-light
- I. Air hose
- J. Air chuck



## SPECIFICATIONS

Voltage: 20V

Max Pressure: 150PSI

Switch Type: Lock-On

Air Chuck Type: Quick Release

Pressure Gauge Type: Digital Gauge with Auto Shut-off

Gauge Display Units: PSI, BAR, KAP and KG/CM<sup>2</sup>

Air Hose Length: 20"

## OPERATION

### How to charge the battery pack ?

#### CHARGING BATTERIES

1. Place the Battery Pack on a dry fireproof surface in a room where the temperature is from 50° F to104° F.

**Note:** If recharging a newly spent Battery Pack, allow it to cool completely before charging.

2. Examine the Battery Pack It must be an undamaged 20V lithium-ion type Battery Pack. Do not charge a cracked, open, or leaking Battery Pack, or charge a non-recommended type of Battery Pack.

3. The Battery Pack's terminals are designed to fit this Charger specifically. If the Battery Pack does not fit the Charger properly, do not try to insert it. Do not force a Battery Pack into the Charger.

4. Make sure the power supply is normal household voltage, 120 volts, AC only, 60 Hz.

5. Connect the charger to a power supply.

6. Slide the Battery Pack onto the Charger.

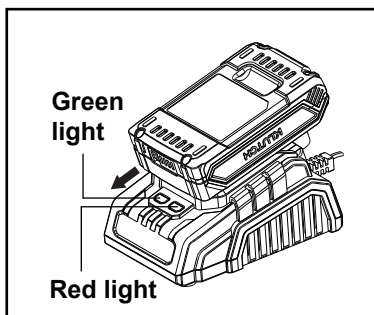
7. The battery pack may become slightly warm to the touch while charging. This is normal and does not indicate a problem.

8. After charging is complete, the green LED will remain on while the charger is in Maintenance mode.

9. Charger will periodically wake from Energy Save mode to ensure the battery pack remains in a fully charged state.

10. To remove the battery pack from the charger, depress the latches on the top of the battery pack and separate battery from charger.

## OPERATION



### CHARGING A HOT BATTERY PACK

When using a tool continuously, the battery pack may become hot. A hot battery pack may be placed directly onto the charger port but charging will not begin until the battery temperature cools to within acceptable temperature range. When a hot battery pack is placed on the charger, the red LED will begin flashing. When the battery pack cools, the charger will automatically begin charging.

The LED lights on charger show different status as below.

LED FUNCTIONS			
RED LED	GREEN LED	STATUS	ACTION
Off	On	Power	Ready to charge battery pack.
Off	Flashing	Charging	Battery is being charged.
Off	On	Fully charged	Disconnect charger from power supply and remove battery pack from charger.
Flashing	Off	Hot battery	The charger will recover to charge when the temperature drops to 104° F (40°C).
On	Off	Battery defective	Battery pack or charger is defective

### Caution

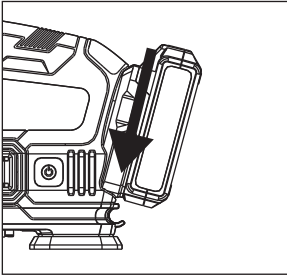
- Fully charge battery before first use.
- Avoid short periods of charging. Only charge battery pack when it completely runs out.
- In order to extend the battery life, fully charge it after each use and ensure that it is charged every three months; avoid storing batteries in cold places as low temperatures may cause them to fail.

# OPERATION

## Step 1: Install Battery Pack(Sold Separately)

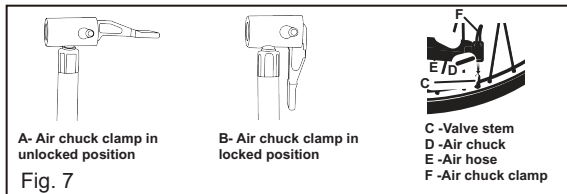
To install : slide battery pack into the bottom of the tool until you hear a click. Make sure that the latch is in place and battery is secure before operation.

To remove: Press the battery release latch and pull the battery pack out at the same time.



## Step 2: Connect the Air Chuck to the Valve Stem

1. Push the air chuck clamp up so that it is in the unlock position.
2. Then place the air chuck on the valve stem and make sure the threaded section of the valve stem is inside the air chuck.
3. Pressing air chuck clamp down until it stops or is parallel with the air hose.



### NOTICE:

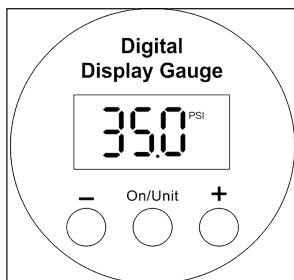
Improperly attached hoses or accessories can become detached under pressure and cause serious injury. Possible air leaks can cause faulty pressure readings. Make sure all connections are tightly secured.



**NOTE:** Always leave the hose free of obstructions when the tool is not in use. Overheating could occur if the hose is blocked.

## OPERATION

### Step 3: Set the Pressure Value



1. Press "ON/Unit" button to read the current tire pressure on the gauge.
  2. Press "ON/Unit" button again to select tire pressure measurement unit from PSI, KPA, BAR, KG/CM.
  3. Press "+" or "-" button to adjust preset tire pressure.
    - (1) Long press "+" or "-" button to adjust working pressure quickly.
    - (2) Short press "+" or "-" button to adjust preset working pressure.
- Note: increment by 0.05BAR & KG/ CM, 1 PSI, 5KPA
4. Preset pressure value will be set after three seconds.
  5. Press Start switch to inflate. When it reaches the preset pressure value, the device will stop working.

**Note: The inflator has a tolerance of + or – 2 PSI. For every 10 minutes of continuous use, 5 minutes of cool down time are required.**

#### **NOTE:**

1. To reset the tire pressure measurement unit, press "ON/Unit" to reselect after setting preset pressure value.
2. Digital gauge records the preset measurement unit and value of the previous operation.
3. After the air pump reaches the preset pressure value, the digital gauge will go off after 60 seconds, and the device will shut down automatically.
4. Maximum PSI for this unit is 150PSI.



## OPERATION

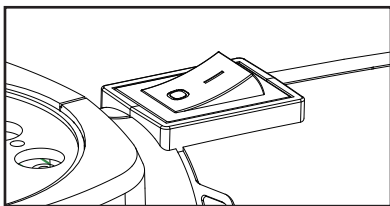
### NOTE

1. Since the pressure gauge is not calibrated and not binding for exact values, tire pressure must be checked by using a reliable measuring device after inflating tires with this pump. Driving a vehicle with improperly inflated tires could result in serious injury.
2. Do not leave items being pumped up unattended while using the inflator. These items can burst and could cause serious injury.
3. The inflator is capable of inflating up to 6.8 Bar. To avoid over inflation, carefully follow instructions on items to be inflated. To avoid product damage, never exceed recommended pressures.
4. The inflator is not designed for commercial applications.



### Step 4: Start the inflator

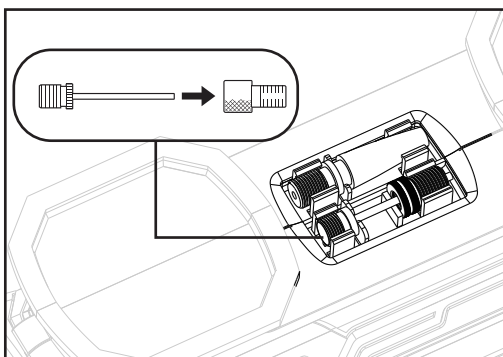
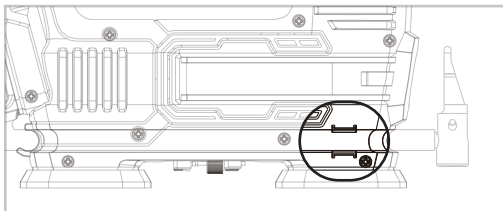
1. "I" refers to "on".
2. "O" refers to "off".
3. Install Battery Pack or 12V Car Power Adapter.
4. Press "ON/Unit" button to set the Pressure Value.
5. To turn on the inflator press the "I"
6. To turn off the inflator press the "O"



# OPERATION

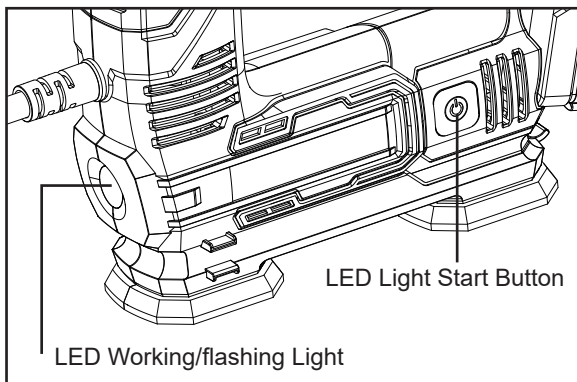
## AIR HOSE AND ACCESSORIES STORAGE

When the inflator is not in use, put the hose into the storage area at both sides of the tool. The adaptors and needles provided with the inflator can also be placed in the storage area at the bottom of the tool.



## LED WORKING/FLASHING LIGHT

1. Install Battery Pack (Sold Separately).
2. Press "ON/Unit" button to set the Pressure Value.
3. To turn on the LED light, press the LED light start button.
4. For an SOS signal, press the the LED light start button again.
5. To turn the Flashlight off, press the LED light start button.



# OPERATION

## ACCESSORIES

The supplied accessories perform a variety of functions. The tapered adaptor can be used on smaller pinch valves to inflate small items like children's toys, which usually require the user to inflate them by blowing air into them. The sport ball needle can be used to inflate any type of sports ball or any other item that requires an inflation sport ball needle.

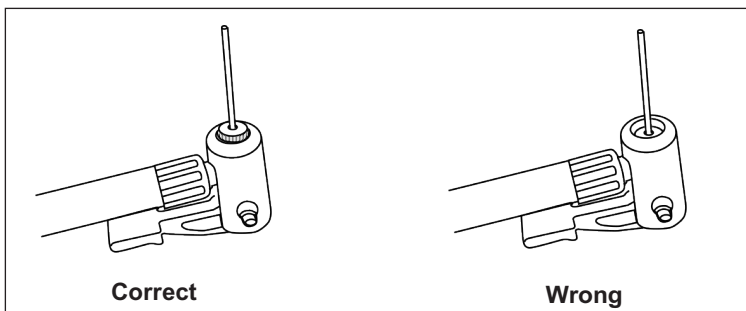
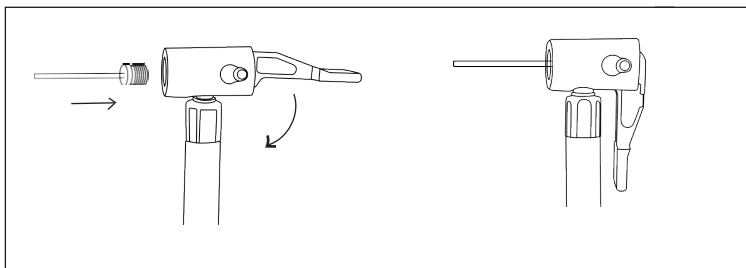
**NOTE:** When inflating items of 10 PSI or less, inflate in short bursts and check after each burst by feel or with a calibrated measuring device to determine accurate pressure.

### Sport Balls Needle

#### How to Install Ball Needle?

For inflating sport balls like basketball, football, etc., The following pictures show how to hook up the nozzle to air chuck.

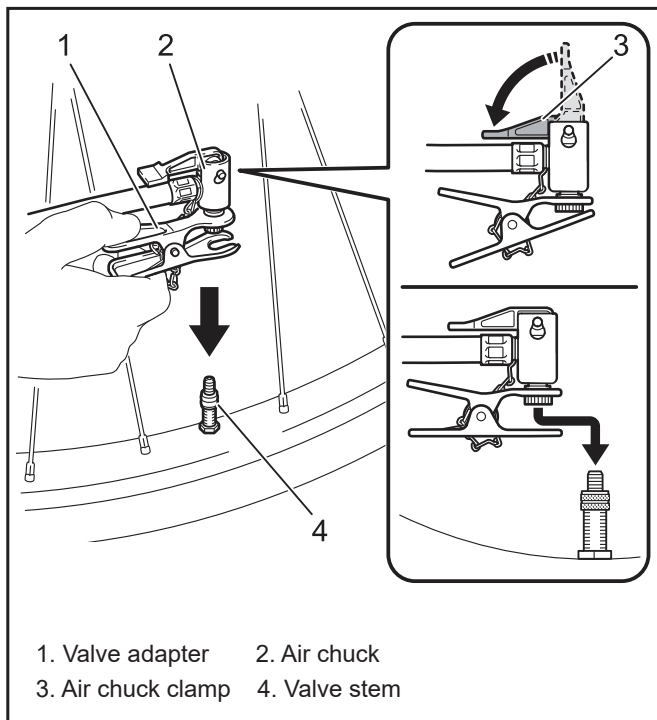
**Note: Do not fully insert the ball needle into the air chuck to prevent the vent hole of needle from being completely blocked.**



# OPERATION

## USING THE VALVE ADAPTER

1. Unfold the air chuck clamp.
2. Insert the valve adapter into the air chuck.
3. Fold the air chuck clamp firmly.



4. Attach the valve adapter to the valve stem while opening the valve adapter.
5. Turn on the tool.
6. Inflate the tire by pulling the switch trigger while checking the status of the tire.

**NOTICE:** When using the valve adapter, the pressure gauge will not display an accurate value due to characteristics of the valve. When inflating a tire, do not use the value on the pressure gauge, but inflate it by checking the status of the tire. If the tool stops before the tire reaches the desired air pressure, adjust the pressure value, and then inflate the tire again.

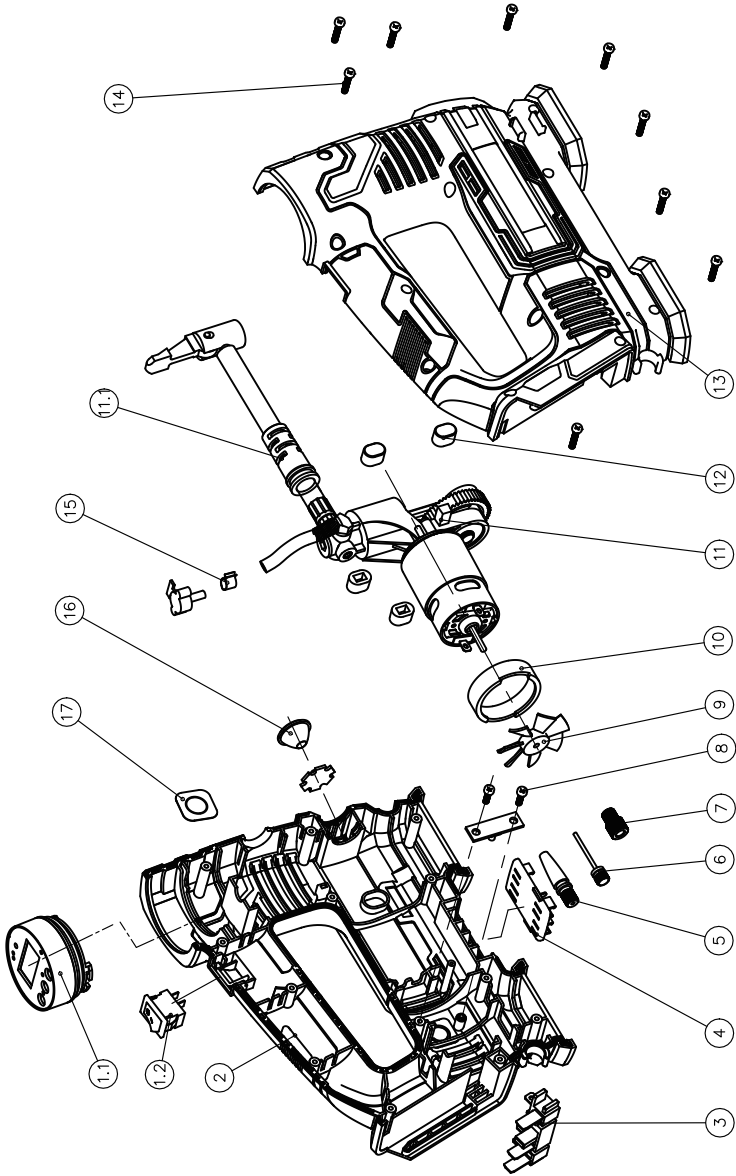
## MAINTENANCE

1. Do not let brake fluids, gasoline, petroleum based products, penetrating oils, etc., come in contact with plastic parts. Chemicals can damage, weaken or destroy plastic which can result in serious personal injury.
2. Keep the tool clean by using a soft damp (not wet) cloth. Do not use solvents on the plastic parts.
3. Avoid using solvents when cleaning plastic parts. Most plastics are susceptible to damage from various types of commercial solvents and may be damaged by their use. Use clean cloths to remove dirt, dust, oil, grease, etc.
4. To maintain the best performance of your rechargeable battery, protect it from overheating, both from overcharging and during storage. Occasionally charge the battery for 7 hours.

## PARTS LIST

No.	Description	Qty.
1.1	Digital gauge	1
1.2	ON/OFF switch	1
2	Left housing	1
3	Battery clip assembly	1
4	Nozzle storage clip	1
5	Plastic tapered adaptor	1
6	Sport ball needle	1
7	Copper tapered adaptor	1
8	Screw ST3*10	2
9	Fan	1
10	Motor rubber ring	1
11	Motor assembly	1
11.1	Air hose protective sleeve	1
12	Absorber	4
13	Right housing	1
14	Screw ST3*14	12
15	Buckle $\phi$ 7mm	1
16	LED light	1
17	LED light start button	1

# SCHEMATIC DRAWING



## REPLACEMENT PARTS

- For replacement parts and technical questions, please call Customer Service at 1-866-915-8626.
- Not all product components are available for replacement. The illustrations provided are a convenient reference to the location and position of parts in the assembly sequence.
- When ordering parts, the following information will be required: item description, item model number, item serial number/item lot date code, and the replacement part reference number.
- The distributor reserves the rights to make design changes and improvements to product lines and manuals without notice.

# LIMITED WARRANTY

## Limited Warranty

- Northern Tool and Equipment Company, Inc. (“We” or “Us”) warrants to the original purchaser only (“You” or “Your”) that the KLUTCH product purchased will be free from material defects in both materials and workmanship; normal wear and tear excepted, for a period of one year from date of purchase. The foregoing warranty is valid only if the installation and use of the product is strictly in accordance with product instructions. There are no other warranties, express or implied, including the warranty of merchantability or fitness for a particular purpose. If the product does not comply with this limited warranty, Your sole and exclusive remedy is that We will, at our sole option and within a commercially reasonable time, either replace the product or product component without charge to You or refund the purchase price (less shipping). This limited warranty is not transferable.

## Limitations on the Warranty

- This limited warranty does not cover: (a) normal wear and tear; (b) damage through abuse, neglect, misuse, or as a result of any accident or in any other manner; (c) damage from misapplication, overloading, or improper installation; (d) improper maintenance and repair; and (e) product alteration in any manner by anyone other than Us with the sole exception of alterations made pursuant to product instructions and in a workmanlike manner.

## Obligations of Purchaser

- You must retain Your product purchase receipt to verify date of purchase and that You are the original purchaser. To make a warranty claim, contact Us at 1-866-915-8626, identify the product by make and model number, and follow the claim instructions that will be provided. The product and the purchase receipt must be provided to Us in order to process Your warranty claim. Any returned product that is replaced or refunded by Us becomes our property. You will be responsible for return shipping costs or costs related to Your return visit to a retail store.

## Remedy Limits

- Product replacement or a refund of the purchase price is Your sole remedy under this limited warranty or any other warranty related to the product. We shall not be liable for service or labor charges or damage to Your property incurred in removing or replacing

## LIMITED WARRANTY

- the product; any damages, including, without limitation, damages to tangible personal property or personal injury, related to Your improper use, installation or maintenance of the product or product component; or any indirect, incidental or consequential damages of any kind for any reason.

### **Assumption of Risk**

- You acknowledge and agree that any use of the product for any purpose other than the specified use (s) stated in the product instruction is at Your own risk.

### **Governing Law**

- This limited warranty gives You specific legal rights, and You also may have other rights which vary from State to State. Some states do not allow limitations or exclusions on implied warranties or incidental or consequential damages. So, the above limitations may not apply to You. This limited warranty is governed by the laws of the State of Minnesota, without regard to rules pertaining to conflicts of law. The state courts located in Dakota County, Minnesota shall have exclusive jurisdiction.

# KLUTCH™

Distributed by:

Northern Tool & Equipment Company, Inc.

Burnsville, Minnesota 55306

[www.northerntool.com](http://www.northerntool.com)

Made in China