



SERVICE PARTS LIST

BULLETIN NO.
54-04-1861

| | | | |
|--|------------|------------------|-----------|
| SPECIFY CATALOG NO. AND SERIAL NO. WHEN ORDERING PARTS | | REVISED BULLETIN | DATE |
| M18™ Dual Bay Simultaneous Super Charger | | 54-04-1860 | Feb. 2024 |
| CATALOG NO. | 48-59-1815 | SERIAL NO. | N85B |
| WIRING INSTRUCTION See Page 2 | | | |

EXAMPLE:

00 0
Component Parts (Small #)
Are Included When Ordering
The Assembly (Large #).

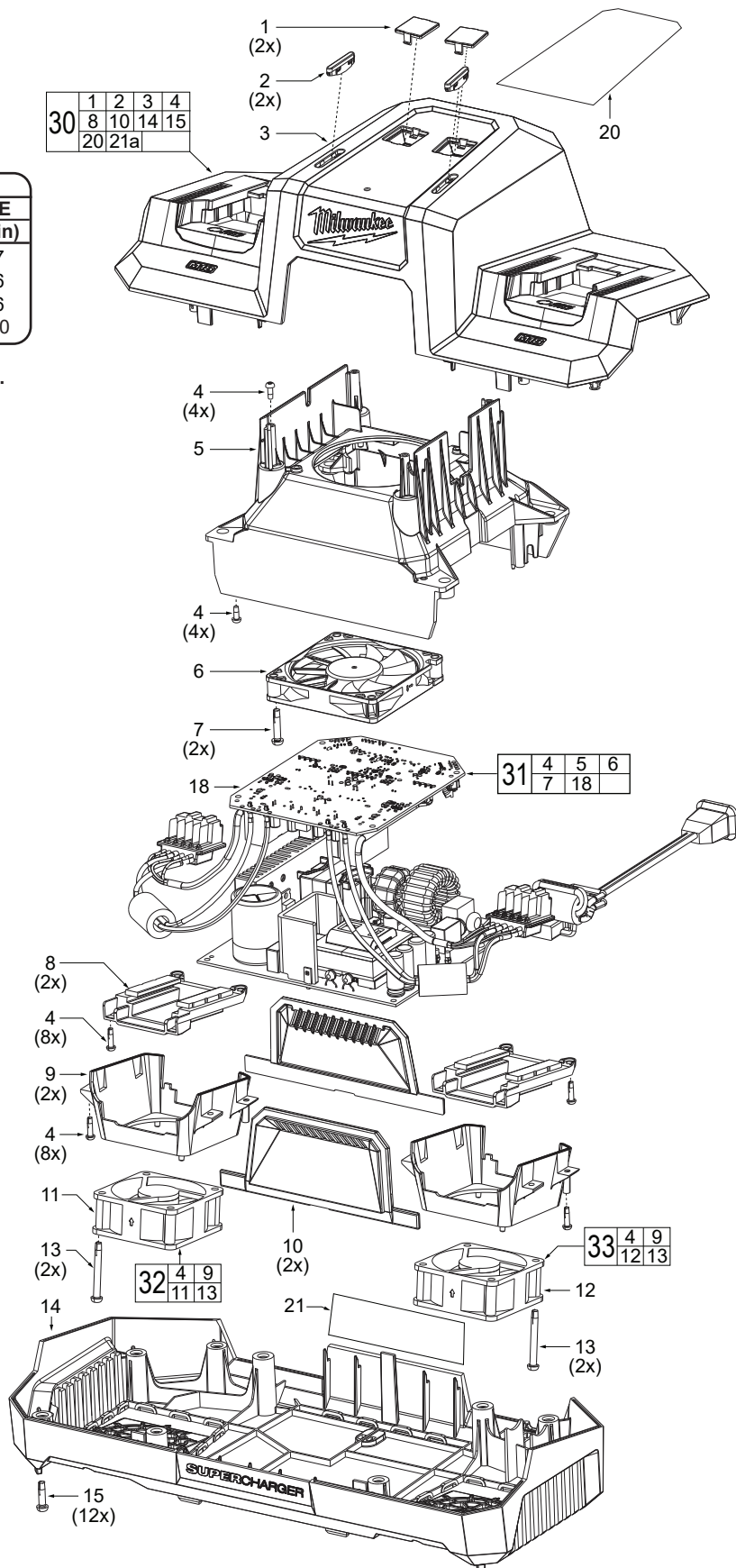
TORQUE SPECIFICATIONS

| FIG. | PART NO. | WHERE USED | SEAT TORQUE | |
|------|------------|-----------------------------------|-------------|---------|
| | | | (kgf-cm) | (lb-in) |
| 4 | 06-82-1087 | PCBA Frame/Interface/Cooling Duct | 6-8 | 5-7 |
| 7 | 06-82-0011 | PCBA Cooling Fan Assy. | 5-7 | 4-6 |
| 13 | 05-78-0307 | Pack Cooling Fan Assy. | 5-7 | 4-6 |
| 15 | 06-82-4003 | Housing | 9-11 | 8-10 |

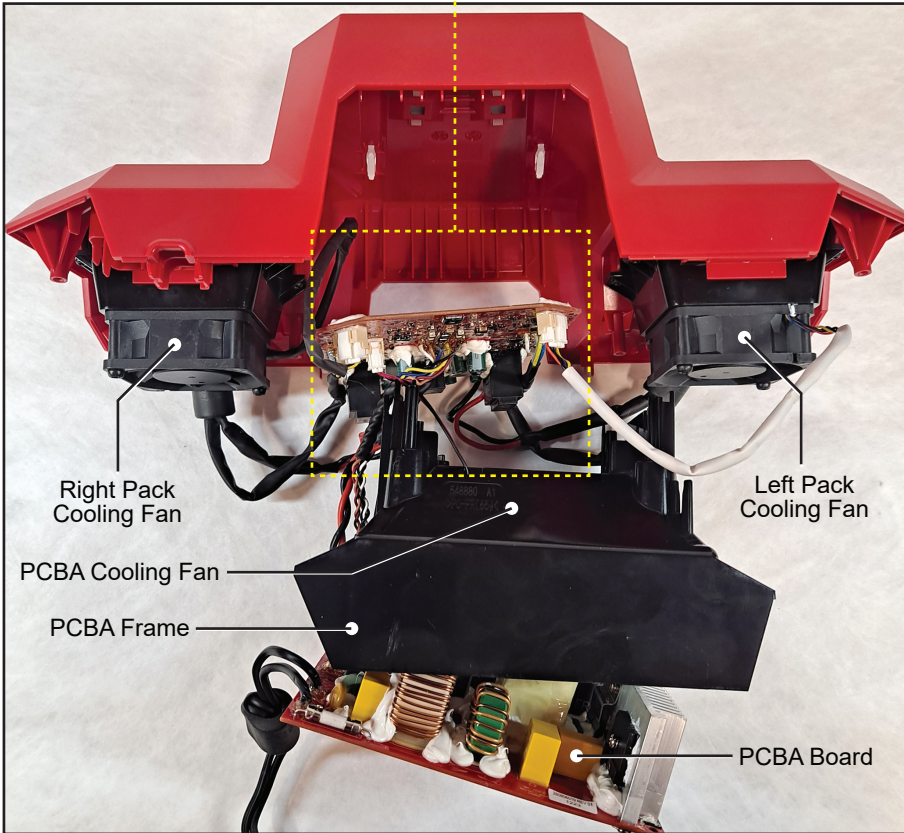
| FIG. | PART NO. | DESCRIPTION OF PART | NO. REQ. |
|------|------------|------------------------------------|----------|
| 1 | ----- | Charger Indicator Lens | (2) |
| 2 | ----- | Charger Status Lens | (2) |
| 3 | ----- | Top Housing | (1) |
| 4 | 05-81-1195 | M3 x 8mm Screw | (24) |
| 5 | ----- | PCBA Frame | (1) |
| 6 | ----- | PCBA Cooling Fan Assy. | (1) |
| 7 | 06-82-0011 | M4 x 20mm Screw | (2) |
| 8 | ----- | Interface Back Plate | (2) |
| 9 | ----- | Pack Cooling Duct | (2) |
| 10 | ----- | Side Plate | (2) |
| 11 | ----- | Left Pack Cooling Fan Assy | (1) |
| 12 | ----- | Right Pack Cooling Fan Assy | (1) |
| 13 | 06-82-4002 | M4 x 35mm Screw | (4) |
| 14 | ----- | Bottom Housing | (1) |
| 15 | 06-82-4003 | M4 x 16mm Screw | (12) |
| 18 | ----- | PCBA Assy. | (1) |
| 20 | 10-22-0261 | UI Label | (1) |
| 21 | 12-20-0318 | Service Nameplate | (1) |
| 30 | 31-50-0059 | Housing Service Kit | (1) |
| 31 | 14-20-0802 | Main PCBA Service Kit | (1) |
| ★32 | 14-46-0351 | Left Pack Cooling Fan Service Kit | (1) |
| 33 | 14-46-0352 | Right Pack Cooling Fan Service Kit | (1) |

FIG. NOTES

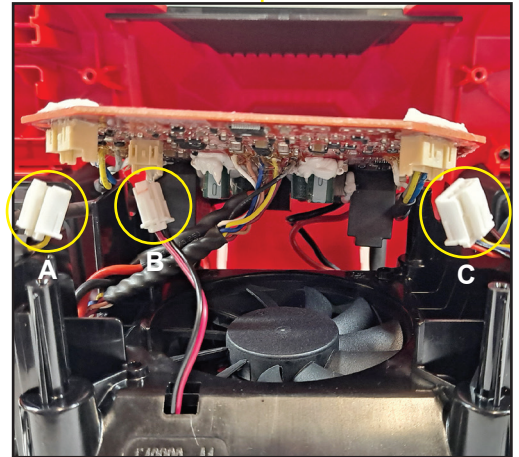
20,21 A clean, dry surface is essential for proper performance for any adhesive system. The area intended for application of any adhesive label or nameplate must be prepared by cleaning with isopropyl alcohol. The solvent is to be applied with a clean, lint free applicator and the surface allowed to dry before applying the label or nameplate.



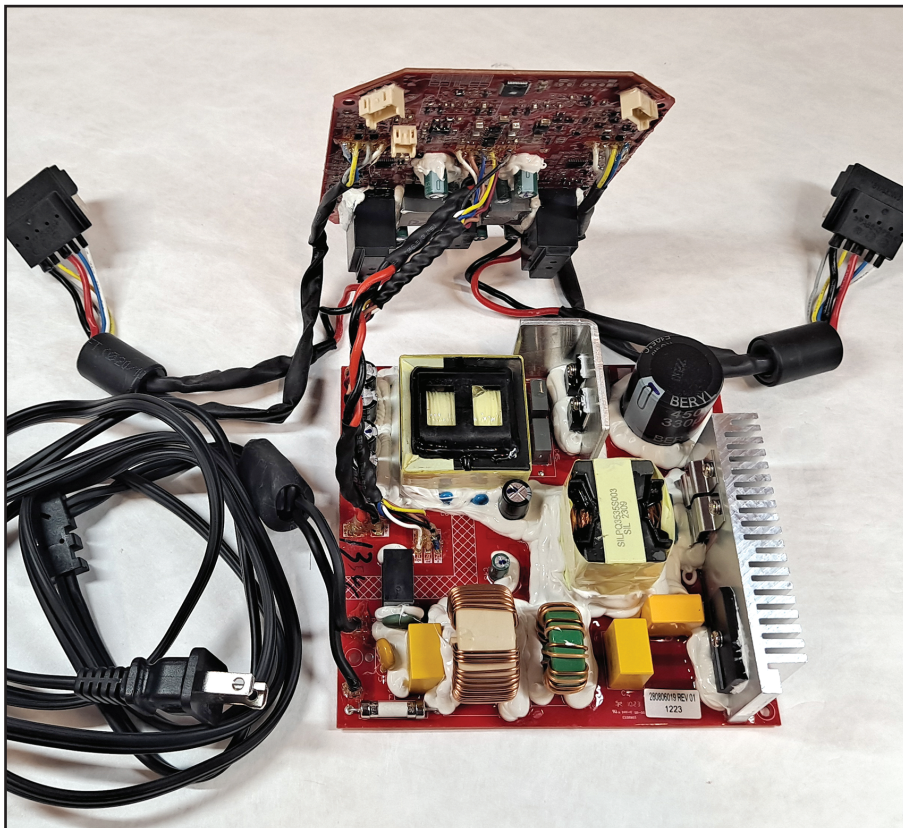
M18 Dual Bay Super Charger Wiring



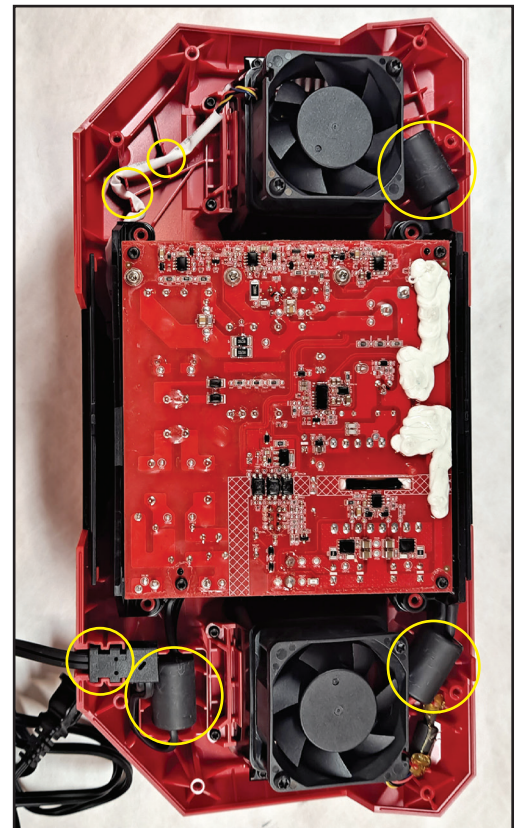
Internal components of charger shown, with screws removed that connect PCBA Assembly to the PCBA Frame.



Detailed view of connectors to PCBA board from A) Right Pack Cooling Fan, B) PCBA Cooling Fan and C) Left Pack Cooling Fan.



PCBA Assembly, which includes power cord, terminal blocks, AC board and DC board.



Before reassembling the bottom housing to the top housing, be sure there are no interferences with wires, and wires are placed within channels as shown above.