



A Regal Brand

Catalog # : 102866.00

Product Type: AC MOTOR

Description: ..1/4HP..1725RPM.S56C.TEFC.115/208-230V.1PH.60HZ.CONT.40C.1.15SF.ROUND.C4C17FC34B.....S56C PLATFORM MODEL.NOT.....

Model: C4C17FC34B

Stock: Stock

Quote: Price:

Date: 05/18/2016

Hazardous Loc
Explosion Proof
Class
Class

NONE

Temp Op Code
GROUP
GROUP

Brake Motors
FORCE
VDC
ADC

Brake Coil OHMs @25 C

Performance								
Torque UOM		OZ-FT	Inertia (WK ²)		.03 LB-FT ²			
Torque			37.8(Break Down)		36.5(Pull Up)		43.6(Locked Rotor)	
CURRENT (amps)			0(Break Down)		0(Pull Up)		11.5(Locked Rotor)	
Efficiency (%)			50.5(75% Load)		42.9(50% Load)		27.4(25% Load)	
PowerFactor			45.1(75% Load)		36.8(50% Load)		29.3(25% Load)	
Load Curve Data @60 HzVolts, 1/4Horsepower								
Load	Amps	KW	RPM	Torque	Eff	PF	Rise By Resis	Frame Rise
0.0	2.85	0.128	1794	0.0	0.0	22.3	0.0	-
0.25	2.57	0.173	1783	3.0	27.4	29.3	0.0	-
0.5	2.6	0.22	1772	6.0	42.9	36.8	0.0	-
0.75	2.68	0.278	1758	9.0	50.5	45.1	0.0	-
1.0	2.7	0.336	1746	12.2	56.3	54.1	70.8	-
1.25	2.91	0.388	1731	15.0	59.4	58.0	0.0	-
1.5	3.09	0.451	1715	18.0	60.8	63.5	0.0	-

SOURCE: CALCULATED GROUP: 3

Load Curve Data @60HzVolts, 1/4Horsepower

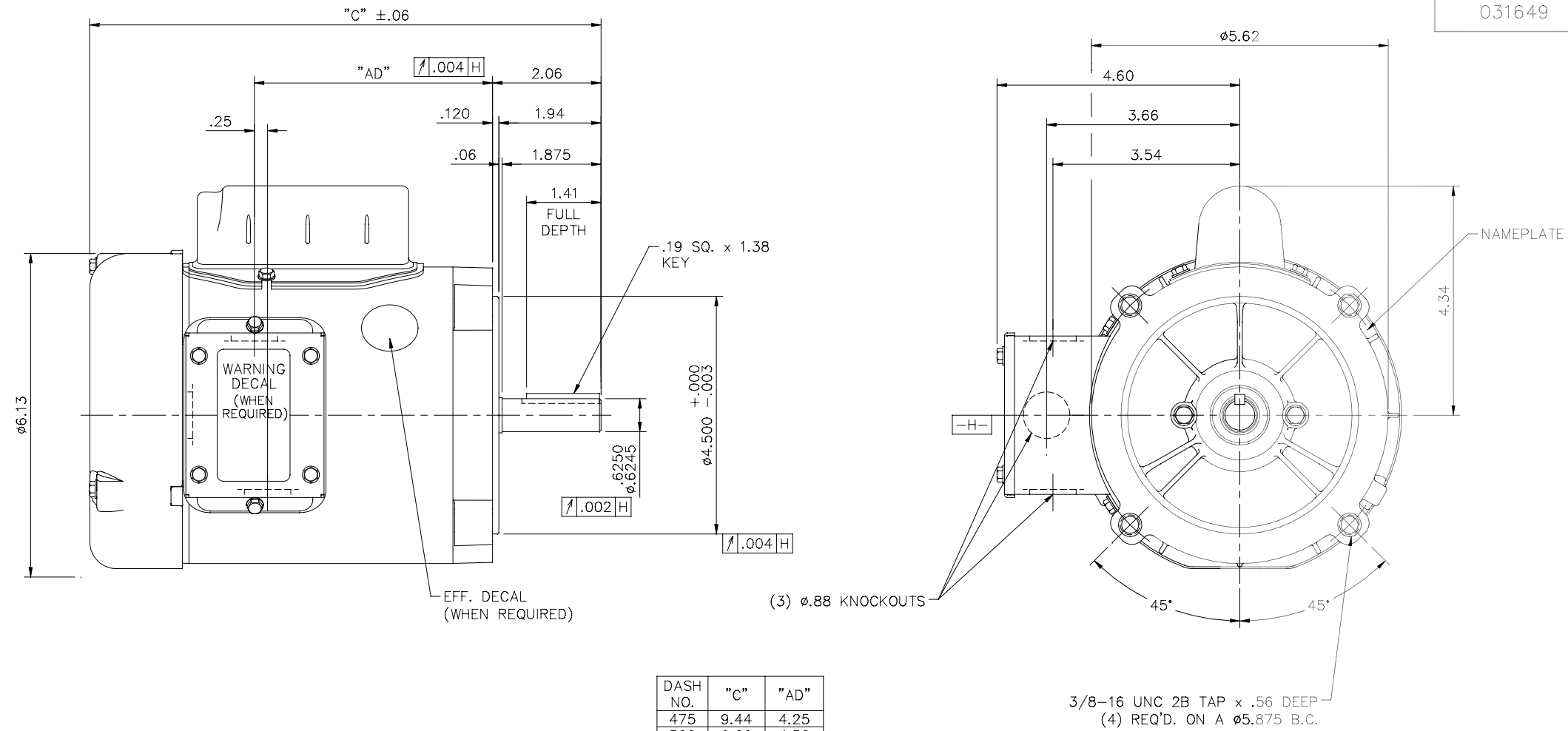
Load	Amps	KW	RPM	Torque	Eff	PF	Rise By Resis	Frame Rise
------	------	----	-----	--------	-----	----	---------------	------------

Load Curve Data Not Available

Quote: Price:

Date: 05/18/2016

031649



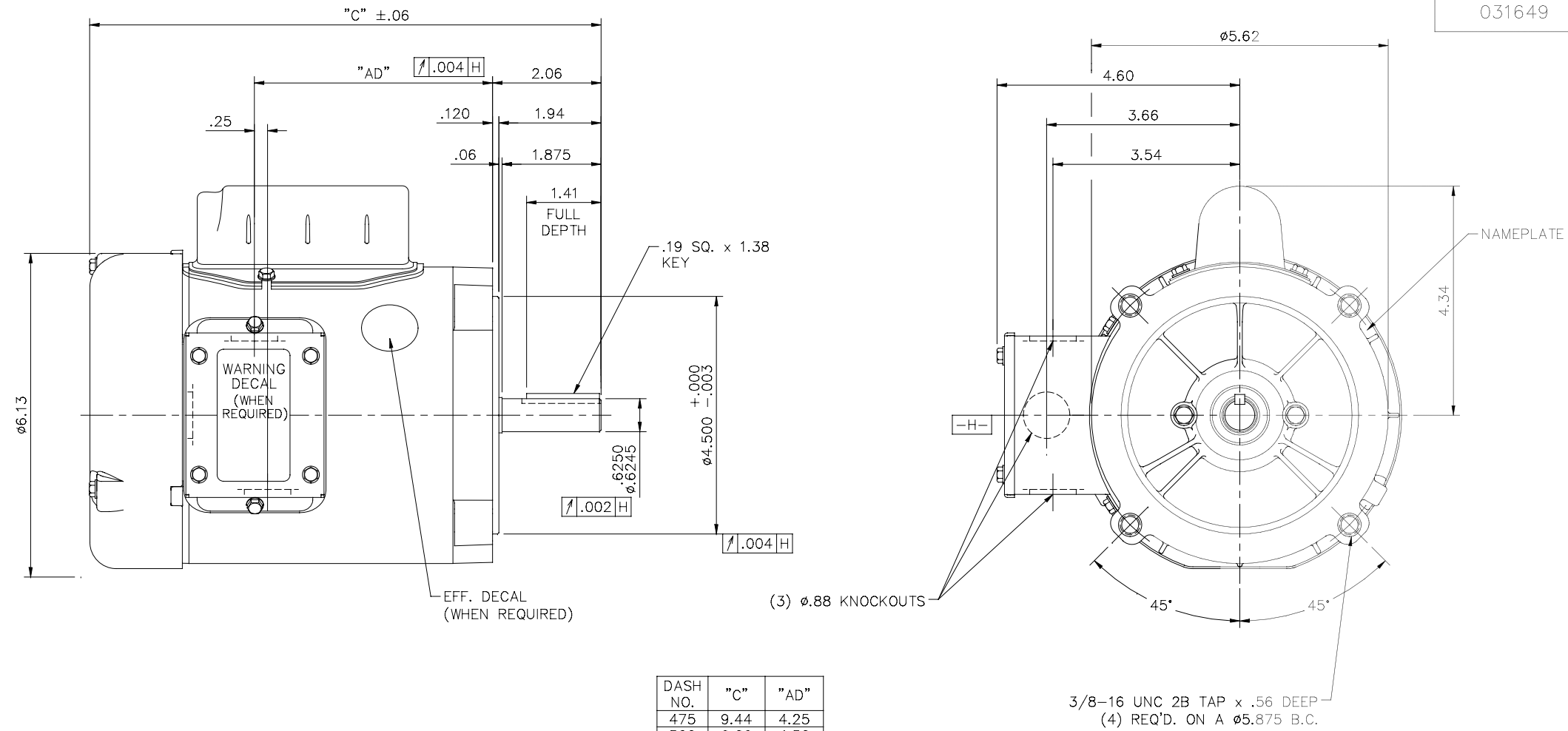
DASH NO.	"C"	"AD"
475	9.44	4.25
500	9.69	4.50
525	9.94	4.75
550	10.19	5.00
575	10.44	5.25
600	10.69	5.50
625	10.94	5.75
650	11.19	6.00
675	11.44	6.25
700	11.69	6.50
725	11.94	6.75
750	12.19	7.00

GASKETS THROUGHOUT

ORACLE REV 004

NO.	REVISION	BY & DATE	CHK	ANG	FINISH	TOLERANCES UNLESS SPECIFIED		LEESON	ELECTRIC MOTORS GEARMOTORS AND DRIVES	DRAWN PG 9/24/01
						DEC.	INCHES			
K	ADDED (WHEN REQ'D) TO WARNING DECAL ECO 0086600	GWS 10/7/15		.X	±.1					CHK
J	ADDED WARNING DECAL	SL 09/30/15	VS	.XX	±.03	TITLE			OUTLINE - S56C FRAME "C" FACE MOUNT - TEFC	SCALE 1=2
H	ADDED DASH NO. 475 (102866.00)	PG 10/28/03		.XXX	±.005					REF 030521
G	REVISED CALLOUT FOR GD&T	KMM 6/6/02		.XXXX	±.0005	MAT'L.			1 PHASE	FMF 101766
				ANG	±1/2"					PREV
THIS DRAWING IN DESIGN AND DETAIL IS OUR PROPERTY AND MUST NOT BE USED EXCEPT IN CONNECTION WITH OUR WORK ALL RIGHTS OF DESIGN AND INVENTION ARE RESERVED THIS IS AN ELECTRONICALLY GENERATED DOCUMENT - DO NOT SCALE THIS PRINT						RFP	CAD FILE	031649	SIZE	DRAWING NO.
						DIST			B	031649
										REV. K

031649



DASH NO.	"C"	"AD"
475	9.44	4.25
500	9.69	4.50
525	9.94	4.75
550	10.19	5.00
575	10.44	5.25
600	10.69	5.50
625	10.94	5.75
650	11.19	6.00
675	11.44	6.25
700	11.69	6.50
725	11.94	6.75
750	12.19	7.00

GASKETS THROUGHOUT

ORACLE REV 004

NO.	REVISION	BY & DATE	CHK	ANG	FINISH	TOLERANCES UNLESS SPECIFIED		LEESON	ELECTRIC MOTORS GEARMOTORS AND DRIVES	DRAWN PG 9/24/01
						DEC.	INCHES			
K	ADDED (WHEN REQ'D) TO WARNING DECAL ECO 0086600	GWS 10/7/15		.X	±.1					CHK
J	ADDED WARNING DECAL	SL 09/30/15	VS	.XX	±.03	TITLE		OUTLINE - S56C FRAME		APPD
H	ADDED DASH NO. 475 (102866.00)	PG 10/28/03		.XXX	±.005			"C" FACE MOUNT - TEFC		SCALE 1=2
G	REVISED CALLOUT FOR GD&T	KMM 6/6/02		.XXXX	±.0005	MAT'L.		1 PHASE		REF 030521
										FMF 101766
										PREV
THIS DRAWING IN DESIGN AND DETAIL IS OUR PROPERTY AND MUST NOT BE USED EXCEPT IN CONNECTION WITH OUR WORK ALL RIGHTS OF DESIGN AND INVENTION ARE RESERVED THIS IS AN ELECTRONICALLY GENERATED DOCUMENT - DO NOT SCALE THIS PRINT						RFP	CAD FILE	031649	SIZE	DRAWING NO.
						DIST			B	031649
										REV. K