



Fixed Straddle Leg Stacker

Owner's Manual



WARNING: Read carefully and understand all ASSEMBLY AND OPERATION INSTRUCTIONS before operating. Failure to follow the safety rules and other basic safety precautions may result in serious personal injury.

Item #52448 & #52449

Thank you very much for choosing a Strongway™ product!

For future reference, please complete the owner's record below:

Serial Number/Lot Date Code: _____

Purchase Date: _____

Save the receipt, the warranty, and this manual. It is important that you read the entire manual to become familiar with this product before you begin using it.

This stacker is designed for certain applications only. The distributor cannot be responsible for issues arising from modification or use of this product in an application for which it was not designed. We strongly recommend that this product not be modified and/or used for any application other than that for which it was designed. If you have questions about a particular modification or application, DO NOT use the product until you have first contacted the distributor to determine if the product can, or should, be modified or used in such an application.

For technical questions, please call **1-218-943-6296**.

Table of Contents

Intended Use.....	4
Technical Specifications	4
Specific Operation Warnings	6
Safety Labels	6
Assembly	6
Before Each Use.....	7
Operating Instructions.....	7
After Each Use.....	8
Maintenance	8
Hand Lever Parts Diagram	9
Hand Lever Parts List	9
Parts Diagram.....	10
Parts List.....	11
Fork Frame Assembly Parts Diagram	12
Fork Frame Assembly Parts List	12
Final Assembly Parts Diagram	13
Final Assembly Parts List	13
Replacement Parts	14
Limited Warranty.....	15

Intended Use

The Strongway Pallet Stacker is used for high-lift loading and unloading and short distance transportation. Because sparks and an electromagnetic field are not generated, the stacker is especially suitable for truck loading and unloading, as well as the loading, unloading, and transportation of flammable and fire prohibited goods in workshops, warehouses, docks, stations, and freight yards. The stacker has smooth-lifting, flexible cornering and convenient operation. To ensure safe and reliable operation, the universal wheels are equipped with a braking device, which is an ideal tool for reducing labor intensity, improving production efficiency, and achieving safe loading and unloading.

Technical Specifications

#52448 Property	#52448 Specification
Maximum rated loading capacity	2200 lbs.
Maximum lifting height	63 in.
Minimum height of forks	2.75 in.
Length of forks	42 in.
Adjustable range of forks (center to center)	4.33 in. – 33.46 in.
Distance between fixed straddle legs	49.3 in.

#52449 Property	#52449 Specification
Maximum rated loading capacity	2200 lbs.
Maximum lifting height	98.4 in.
Minimum height of forks	2.75 in.
Length of forks	42 in.
Adjustable range of forks (center to center)	4.33 in. – 33.46 in.
Distance between fixed straddle legs	49.3 in.

⚠WARNING

- Read and understand all instructions. Failure to follow all instructions may result in serious injury.
- The warnings, cautions, and instructions in this manual cannot cover all possible conditions or situations that could occur. Exercise common sense and caution when using this stacker. Always be aware of the environment and ensure that the stacker is used in a safe and responsible manner.
- DO NOT allow persons to operate or assemble this stacker until they have read this manual and have developed a thorough understanding of how it works.
- DO NOT modify the stacker in any way. Unauthorized modification may impair the function and/or safety and could affect the life of the stacker. There are specific applications for which the product was designed.
- Use the right tool for the job. DO NOT attempt to force small equipment to do the work of larger, industrial equipment. There are certain applications for which this equipment was designed. It will do the job better and more safely at the capacity for which it was intended. DO NOT use this stacker for a purpose that it was not intended for.

⚠️WARNING

WORK AREA SAFETY

- Inspect the work area before each use. Keep work area clean, dry, free of clutter, and well-lit. Cluttered, wet, or dark work areas can result in injury. Using the stacker in confined work areas may put you dangerously close to other cutting tools and rotating parts.
-
- Keep children and bystanders away from the work area while operating the stacker. Do not allow children to handle the tool.

⚠️WARNING

PERSONAL SAFETY

- Stay alert, watch what you are doing, and use common sense when operating the stacker. Do not use it while you are tired or under the influence of drugs, alcohol, or medication. A moment of inattention while operating the tool may result in serious personal injury.
- Dress properly. Do not wear loose clothing, dangling objects, or jewelry. Keep your hair, clothing, and gloves away from moving parts. Loose clothes, jewelry, or long hair can be caught in moving parts. Air vents on the tool should be avoided as they often cover moving parts.
- Use safety apparel and equipment. Use ANSI-approved safety goggles or safety glasses with side shields or, when needed, a face shield. Use a dust mask in dusty work conditions. Also use non-skid safety shoes, hard hat, gloves, dust collection systems, and hearing protection when appropriate. This applies to all persons in the work area.
- Do not overreach. Keep proper footing and balance at all times.

⚠️CAUTION

STACKER USE AND CARE

- Do not force the stacker. Tools do a better and safer job when used in the manner for which they are designed. Plan your work and use the correct tool for the job.
- Check for damaged parts before each use. Carefully check that the stacker will operate properly and perform its intended function. Replace damaged or worn parts immediately. Never operate the tool with a damaged part.
- Store the tool when it is not in use. Store it in a dry, secure place out of the reach of children. Inspect the tool for good working condition prior to storage and before re-use.
- Use only accessories that are recommended by the manufacturer for use with your tool. Accessories that may be suitable for one tool may create a risk of injury when used with another tool. Never use an accessory that has a lower operating speed or operating pressure than the tool itself.

Specific Operation Warnings

⚠WARNING

- Do not exceed the rated load capacity.
- Operate indoors, on a hard level surface.
- Before moving, be sure load is centered and equally distributed on forks.
- Lock wheels before raising or lowering loads.
- NEVER exceed fork height of 19.5 inches when moving loads.
- NEVER allow people to sit on or ride the stacker.
- Do not use to transport people or animals.
- Keep people, animals, and personal property clear from under the load.
- keep bystanders away from stacker while in use.
- Not for use by or around children.

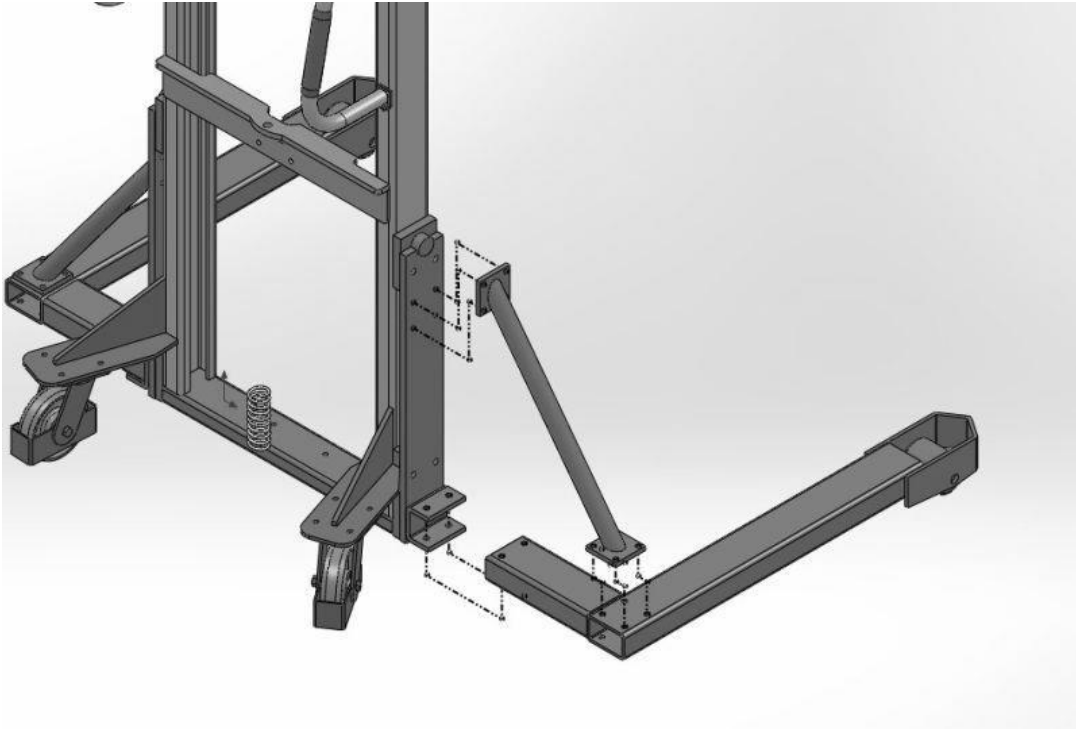
Safety Labels

⚠WARNING

The stacker is NOT for human transportation. DO NOT move with a human standing on the forks. Any part of the operator's body should NEVER be placed under the cargo or load at any time.

Assembly

Attach each Straddle Leg (#7) to the Support Plate (#5) using two Hex Bolts (#6), two Washers (#15), two Spring Washers (#16), and two Hex Nuts (#17). Attach the Support Bar (#14) to the Support Plate (#5) and to the Straddle Leg (#7) using eight Hex Bolts (#13), eight Spring Washers (#12), and eight Washers (#3). See diagram below.



Before Each Use

Always check for damages or worn-out parts before using the stacker. Broken parts will affect the stacker's operation. Replace or repair damaged or worn parts immediately.

Operating Instructions

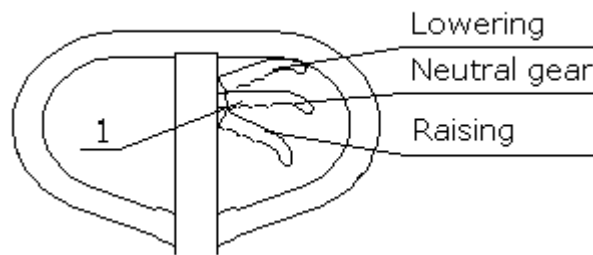
⚠WARNING

Loads must be evenly distributed on the forks and never overload the forks. Always lock the wheels when raising or lowering any loads.

Operating the Handle Trigger

- The Trigger Handle in lower (bottom) position is for raising the forks. Move the handle up and down (pumping motion) to raise the forks to the desired height.
- The Trigger Handle in the middle (center) position puts the pallet jack in neutral. This position is for moving the handle while pulling or pushing loads, and the forks will NOT move up or down.

- The Trigger Handle in the top position (or pulling upward) is for lowering the forks. Squeezing the trigger will allow forks to lower. Stop squeezing the trigger when the forks are at the desired height.



Operating the Foot Pedal

The foot pedal can be used instead of the handle to raise the forks to the desired height.

General Operation Notes

- When lowering loads, operate the handle slowly and gently to avoid sudden drops or declination, which can cause unsafe situations and can cause damage to the pump on the stacker.
- Before each use, inspect the stacker for any damage or loose components. Do not use if any damage or non-working parts are found. Make repairs before operating again.
- Heavy loads should be unloaded when not in-use. Do not leave any heavy goods on the forks for long periods of time to avoid damage to the pump and unsafe situations.
- Always use the brakes on the back wheels to keep the stacker from moving during transport and for safe operation.
- When checking or adding hydraulic oil, only use new and clean oil. ISO #32 is recommended.

After Each Use

When the stacker is not in use, store it in a secure place out of the reach of children. Inspect it for good working condition prior to storage and before re-use.

Maintenance

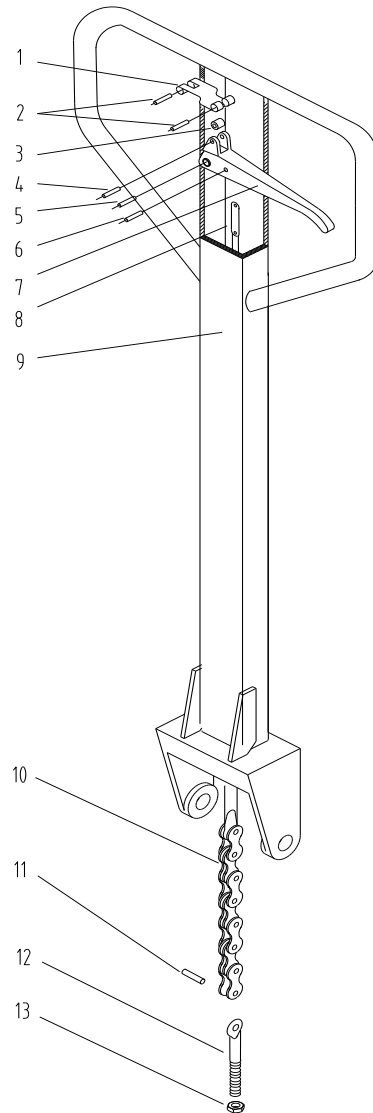
Maintain your stacker. It is recommended that the general condition of any tool be examined before it is used. Keep your tool in good repair by adopting a program of conscientious repair and maintenance in accordance with the recommended procedures found in this manual. Keep all cutting tools sharp and clean. Properly maintained cutting tools with sharp cutting edges are less likely to bind and are easier to control. Keep handles dry, clean, and free from oil and grease.

All moving joints should be lubricated with general oil every three months. Check to see that the wheels and axles are not intangled by threads or any other materials, and that the wheels run freely and smooth.

Air may be absorbed into the hydraulic system when the stacker is not used for a long time. The air can be removed in the following way:

- Lower the trigger to the position for raising the forks.
- Pump (move in an up and down motion) the handle 4-6 times and then release the trigger. If needed, the above operation can be repeated several times until air is removed.

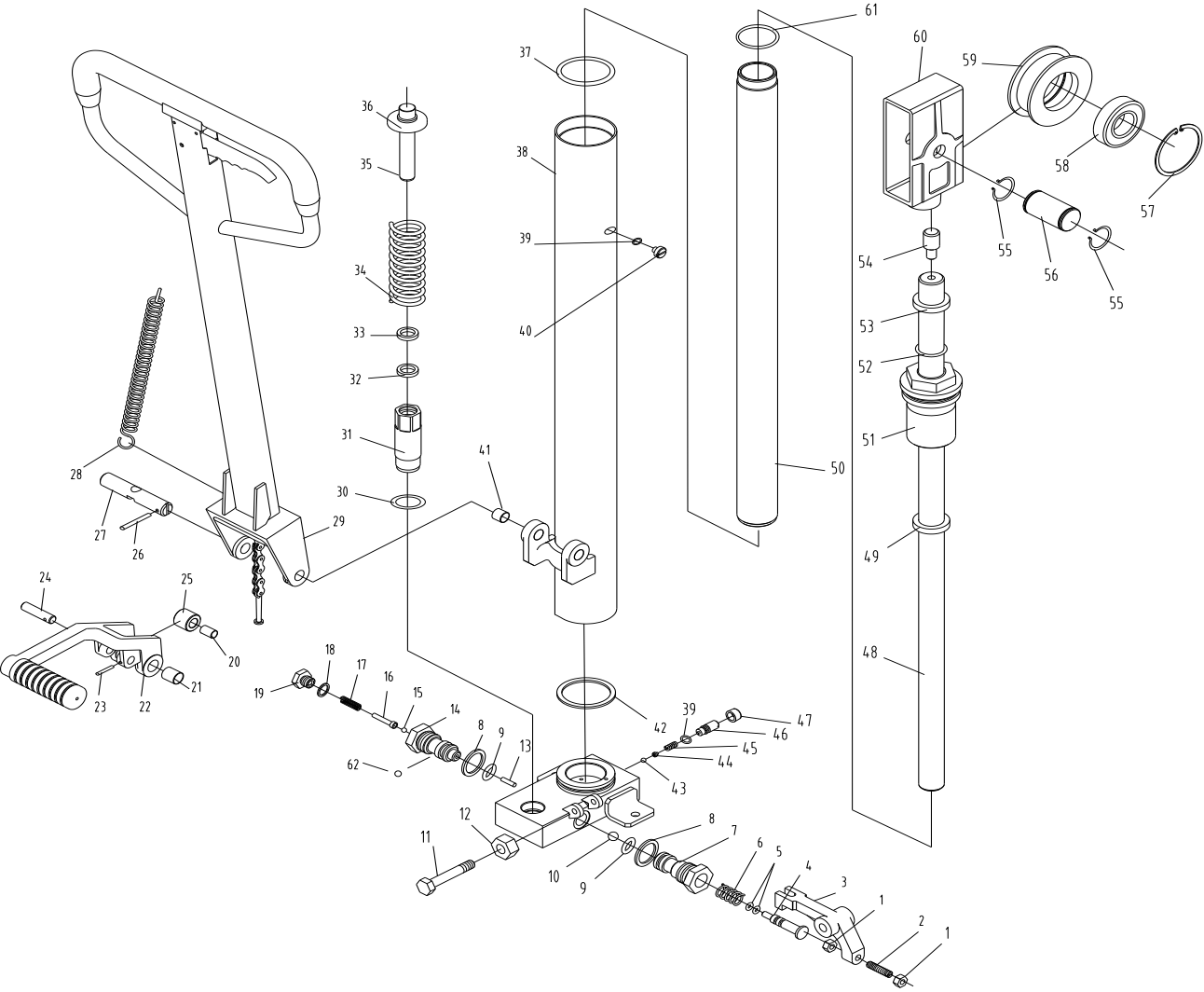
Hand Lever Parts Diagram



Hand Lever Parts List

Part No.	Description	Quantity
1	Locating tab	1
2	Elastic pin Ø4x32	2
3	Roller	1
4	Elastic pin Ø4x20	1
5	Elastic pin Ø6x32	1
6	Elastic pin Ø4x20	1
7	Knob	1
8	Tension bar	1
9	Handle	1
10	Chain	1
11	Pin	1
12	Eyelet bolt	1
13	Lock nut	1

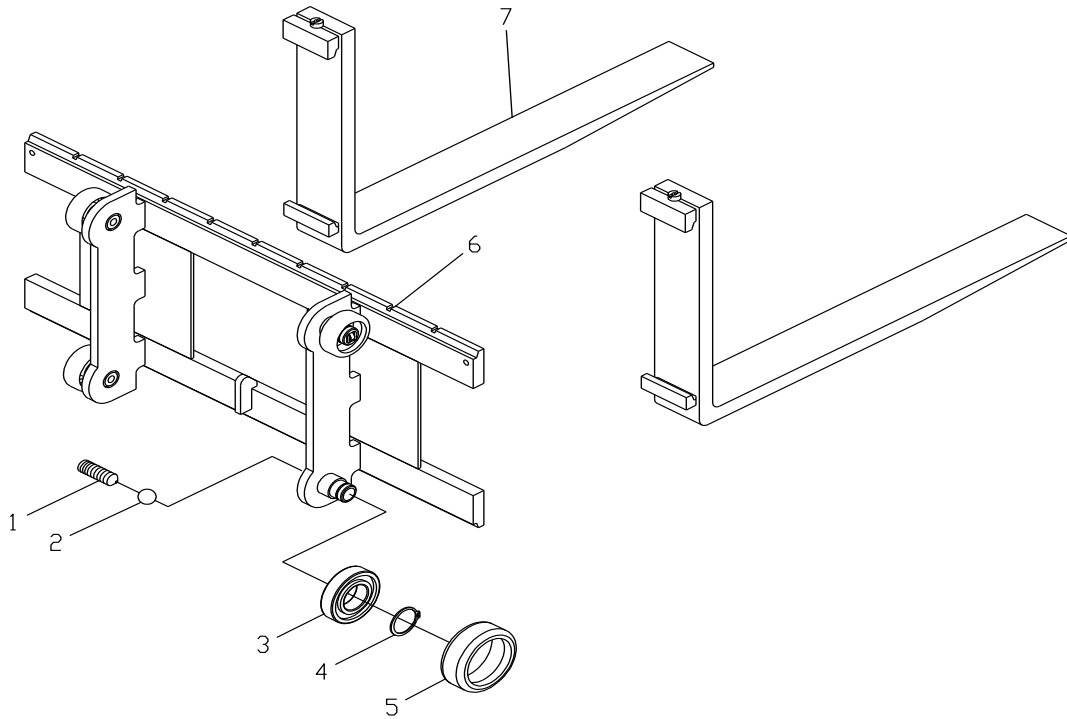
Parts Diagram



Parts List

Part No.	Description	Quantity	Part No.	Description	Quantity
1	Hex nut M6	2	32	Seal ring Ø16	1
2	Screw M6x25	1	33	Dust proofing ring Ø16	1
3	Lever plate	1	34	Large spring	1
4	Striker	1	35	Pump core Ø16	1
5	O-ring Ø4.87x1.8	2	36	Large spring seat	1
6	Striker spring	1	37	O-ring Ø65x3.55	1
7	Striker valve seat	1	38	Cylinder	1
8	Combined washer Ø20	2	39	O-ring Ø7.5x2.65	2
9	O-ring Ø12.5x2.65	2	40	Oil plug	1
10	Steel ball Ø8	1	41	Combined bushing 2012	2
11	Bolt M8x50	1	42	Rectangular seal ring	1
12	Nut M8	1	43	Steel ball Ø6.5	1
13	Pin Ø3x15.7	1	44	Safety valve seat	1
14	Valve seat 1000	1	45	Safety valve spring	1
15	Steel ball Ø5	1	46	Safety valve adjusting screw	1
16	Pin	1	47	Safety valve boot	1
17	Valve seat spring	1	48	Piston rod	1
18	Combined washer Ø10	1	49	Seal ring Ø31.5	1
19	Bolt	1	50	Oil cylinder	1
20	Combined bushing 1220	1	51	Top cap	1
21	Combined bushing 2017	2	52	O-ring Ø31.5x3.55	1
22	Compressed frame	1	53	Dust proofing ring Ø31.5	1
23	Elastic pin Ø4x24	1	54	Bolt M12x25	1
24	Axle with a hole	1	55	Axial elastic backing ring Ø35	2
25	Pinch roller	1	56	Chain wheel shaft	1
26	Elastic pin Ø5x35	1	57	Elastic backing ring for holes Ø72	1
27	Compress frame bearing pin	1	58	Bearing 60207	1
28	Tension spring	1	59	Chain wheel	1
29	Hand lever	1	60	Chain wheel cover	1
30	O-ring Ø22.4x2.65	1	61	O-ring Ø47.5x3.55	1
31	Pump cylinder Ø16	1	62	Steel ball Ø4	1

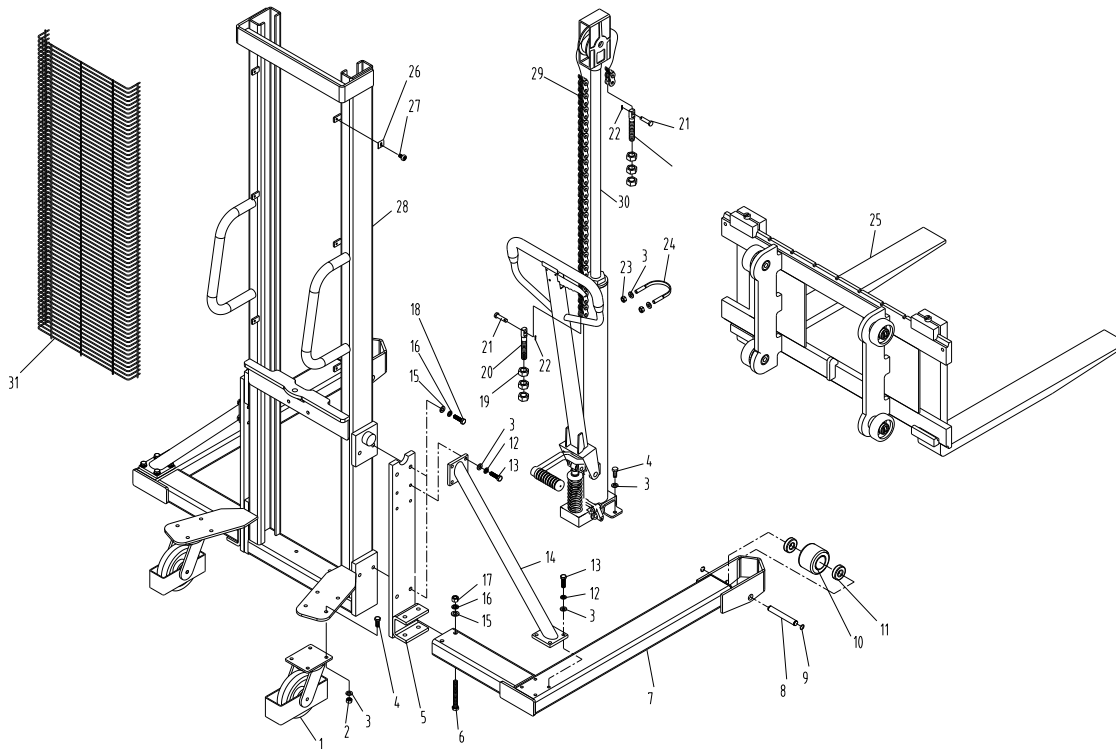
Fork Frame Assembly Parts Diagram



Fork Frame Assembly Parts List

Part No.	Description	Quantity
1	Locking screw M16x50	4
2	Steel ball Ø19	4
3	Bearing 60207	4
4	Axial elastic backing ring Ø35	4
5	Large pulley	4
6	Fork frame	1
7	Forks	2

Final Assembly Parts Diagram



Final Assembly Parts List

Part No.	Description	Quantity	Part No.	Description	Quantity
1	Universal wheel	2	17	Hex nut M12	4
2	Hex nut M10	8	18	Hex bolt M12x35	8
3	Washer Ø10	28	19	Hex nut M16	6
4	Hex bolt M10x25	8	20	Screw rod	2
5	Support plate	2	21	Chan box	2
6	Hex Bolt M12x100	4	22	Split pin Ø2	2
7	Straddle leg	2	23	Lock nut M10	2
8	Front wheel pin	2	24	Screen cover	1
9	Axial elastic backing ring Ø20	4	25	Fork frame assembly	1
10	Front wheel	2	26	Oil cylinder jacket	6
11	Bearing 60204	4	27	Hexagon socket head cap screws M6x16	6
12	Spring washer Ø10	16	28	Frame	1
13	Hex bolt M10x35	16	29	Chain	1
14	Support bar	2	30	Lofting jack	1
15	Washer Ø12	12	31	Fixed handle	1
16	Spring washer Ø12	12			

Replacement Parts

- For replacement parts and technical questions, please call Customer Service at **1-218-943-6296**.
- Not all product components are available for replacement. The illustrations provided are a convenient reference to the location and position of parts in the assembly sequence.
- When ordering parts, the following will be required: Model Number, Serial Number/Lot Date Code, and Description.
- The distributor reserves the rights to make design changes and/or improvements to product lines and manuals without notice.

Limited Warranty

Northern Tool and Equipment Company, Inc. ("We" or "Us") warrants to the original purchaser only ("You" or "Your") that the Strongway product purchased will be free from material defects in both materials and workmanship, normal wear and tear excepted, for a period of one year from date of purchase. The foregoing warranty is valid only if the installation and use of the product is strictly in accordance with product instructions. There are no other warranties, express or implied, including the warranty of merchantability or fitness for a particular purpose. If the product does not comply with this limited warranty, Your sole and exclusive remedy is that We will, at our sole option and within a commercially reasonable time, either replace the product or product component without charge to You or refund the purchase price (less shipping). This limited warranty is not transferable.

Limitations on the Warranty

This limited warranty does not cover: (a) normal wear and tear; (b) damage through abuse, neglect, misuse, or as a result of any accident or in any other manner; (c) damage from misapplication, overloading, or improper installation; (d) improper maintenance and repair; and (e) product alteration in any manner by anyone other than Us, with the sole exception of alterations made pursuant to product instructions and in a workmanlike manner.

Obligations of Purchaser

You must retain Your product purchase receipt to verify date of purchase and that You are the original purchaser. To make a warranty claim, contact Us at 1-800-222-5381, identify the product by make and model number, and follow the claim instructions that will be provided. The product and the purchase receipt must be provided to Us in order to process Your warranty claim. Any returned product that is replaced or refunded by Us becomes our property. You will be responsible for return shipping costs or costs related to Your return visit to a retail store.

Remedy Limits

Product replacement or a refund of the purchase price is Your sole remedy under this limited warranty or any other warranty related to the product. We shall not be liable for: service or labor charges or damage to Your property incurred in removing or replacing the product; any damages, including, without limitation, damages to tangible personal property or personal injury, related to Your improper use, installation, or maintenance of the product or product component; or any indirect, incidental or consequential damages of any kind for any reason.

Assumption of Risk

You acknowledge and agree that any use of the product for any purpose other than the specified use(s) stated in the product instructions is at Your own risk.

Governing Law

This limited warranty gives You specific legal rights, and You also may have other rights which vary from state to state. Some states do not allow limitations or exclusions on implied warranties or incidental or consequential damages, so the above limitations may not apply to You. This limited warranty is governed by the laws of the State of Minnesota, without regard to rules pertaining to conflicts of law. The state courts located in Dakota County, Minnesota shall have exclusive jurisdiction for any disputes relating to this warranty.



Distributed by:
Northern Tool & Equipment Company, Inc.
Burnsville, Minnesota 55306
www.northerntool.com

Made in China