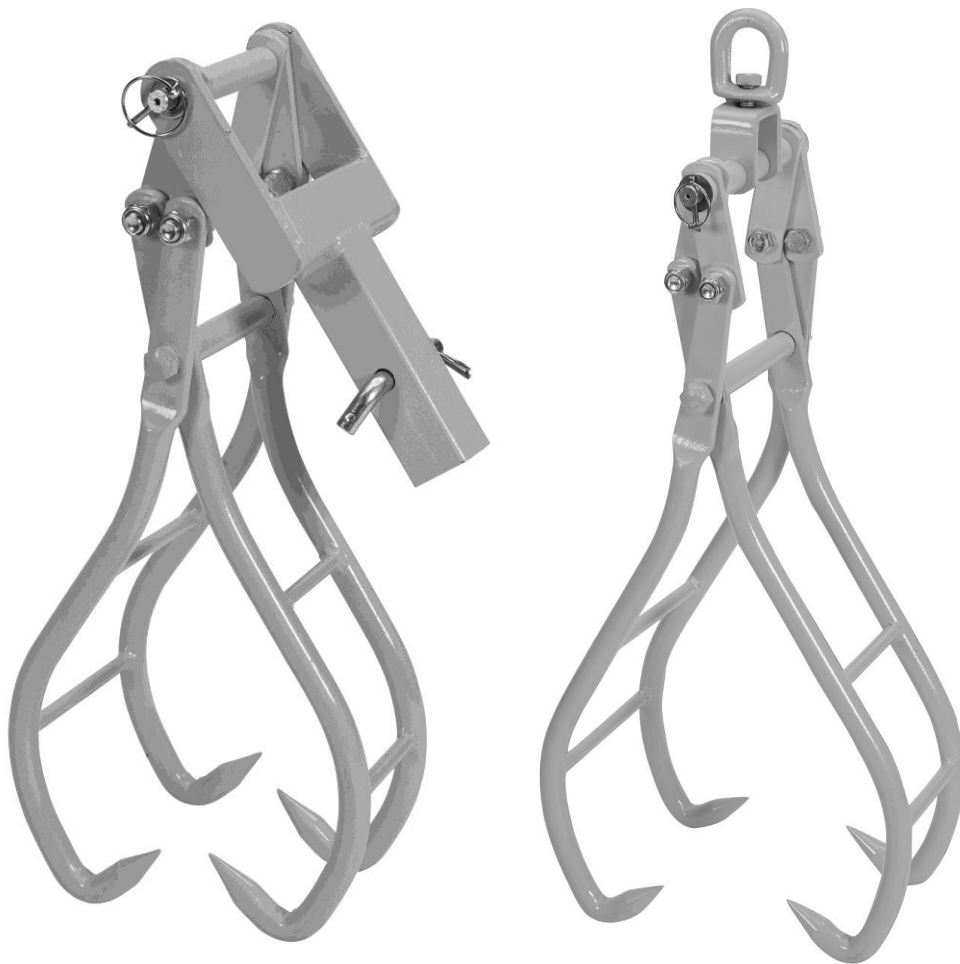




4-Claw Log Lifting Tongs

Owner's Manual



⚠ WARNING: Read carefully and understand all ASSEMBLY AND OPERATION INSTRUCTIONS before operating. Failure to follow the safety rules and other basic safety precautions may result in serious personal injury.

Item #51628 & #51629

SAVE THESE INSTRUCTIONS

Thank you very much for choosing a Roughneck® product!

For future reference, please complete the owner's record below:

Serial Number/Lot Date Code: _____

Purchase Date: _____

Save the receipt, warranty, and this manual. It is important that you read the entire manual to become familiar with this product before you begin using it.

These 4-Claw Log Lifting Tongs are designed for certain applications only. Northern Tool & Equipment is not responsible for issues arising from modification or improper use of this product such as an application for which it was not designed. We strongly recommend that this product not be modified and/or used for any application other than that for which it was designed.

For technical questions, please call **1-800-222-5381**.

Table of Contents

Intended Use.....4

Technical Specifications4

Important Safety Information4

Specific Operation Warnings6

Assembly Instructions.....6

Before Each Use.....7

Operating Instructions.....7

Maintenance8

Parts Diagram8

Parts List9

Replacement Parts10

Limited Warranty.....11

Intended Use

The Roughneck 4-Claw Log Lifting Tongs have 4-claws to provide safety and stability when working with heavy logs. They feature durable steel construction with a bright yellow powder-coat finish for easy job site identification. The tongs are equipped with a 2 inch receiver for easy towing.

Technical Specifications

#51628 Property	#51628 Specification
Weight Capacity	Max. 1 ton (2200 lbs.)
Jaw Opening	3 inches-28 inches
Receiver	2 inches
#51629 Property	#51629 Specification
Weight Capacity	Max. 1 1/2 ton (3300 lbs.)
Jaw Opening	6 inches-36 inches
Receiver	2 inches

Important Safety Information

⚠️WARNING

- Read and understand all instructions. Failure to follow all instructions may result in serious injury or property damage.
- The warnings, cautions, and instructions in this manual cannot cover all possible conditions or situations that could occur. Exercise common sense and caution when using the tongs. Always be aware of the environment and ensure that the tongs are used in a safe and responsible manner.
- Do not allow persons to operate or assemble the tongs until they have read this manual and have developed a thorough understanding of how they work.
- Do not modify the tongs in any way. Unauthorized modification may impair the function and/or safety and could affect the life of the tongs. There are specific applications for which the tongs were designed.
- Use the right tool for the job. DO NOT attempt to force small equipment to do the work of larger industrial equipment. There are certain applications for which this equipment was designed. It will be a safer experience and do the job better at the capacity for which it was intended. DO NOT use the tongs for a purpose for which they were not intended.
- Industrial or commercial applications must follow OSHA requirements.

⚠️WARNING

- This product may contain chemicals known to the State of California to cause cancer, birth defects or other reproductive harm.

⚠️WARNING

WORK AREA SAFETY

- Inspect the work area before each use. Keep your work area clean, dry, free of clutter, and well-lit. Cluttered, wet, or dark work areas can result in injury. Using the tongs in confined work areas may put you dangerously close to cutting tools and rotating parts.
- Keep children and bystanders away from the work area while operating the tongs. Do not allow children to handle the tongs.

⚠️WARNING

PERSONAL SAFETY

- Stay alert, watch what you are doing, and use common sense when operating the tongs. Do not use them while you are tired or under the influence of drugs, alcohol, or medication. A moment of inattention while operating the tongs may result in serious personal injury.
- Dress properly. Do not wear loose clothing, dangling objects, or jewelry. Keep your hair, clothing and gloves away from moving parts. Loose clothes, jewelry, or long hair can be caught in moving parts.
- Wear the proper personal protective equipment when necessary. Use ANSI Z87.1 compliant safety goggles (not safety glasses) with side shields, or when needed, a face shield. Use a dust mask in dusty work conditions. Also use non-skid safety shoes, hardhat, gloves, dust collection systems, and hearing protection when appropriate. This applies to all persons in the work area.
- Do not overreach. Keep proper footing and balance at all times.

⚠️CAUTION

TONGS USE AND CARE

- Do not force the tongs. Products are safer and do a better job when used in the manner for which they are designed. Plan your work, and use the correct product for the job.
- Check for damaged parts before each use. Carefully check that the tongs will operate properly and perform the intended function. Replace damaged or worn parts immediately. Never operate the tongs with a damaged part.
- Store the tongs when they are not in use. Store in a dry, secure place out of the reach of children. Inspect the tool for good working condition prior to storage and before re-use.
- Use only accessories that are recommended by the manufacturer for use with your tongs. Accessories that may be suitable for one product may create a risk of injury when used with another tool. Never use an accessory that has a lower operating speed or operating pressure than

the tool itself.

- Keep guards in place and in working order. Never operate the tongs without the guards in place.

Specific Operation Warnings

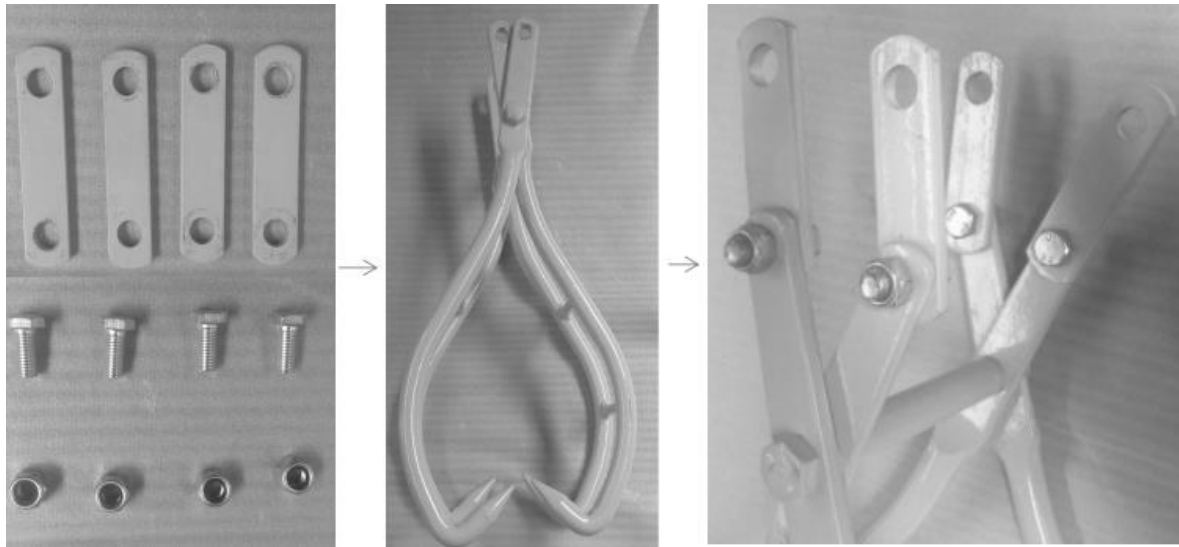
⚠WARNING

- Do not exceed the rated load capacity.
- Do not stand under or near while load is suspended.

Assembly Instructions

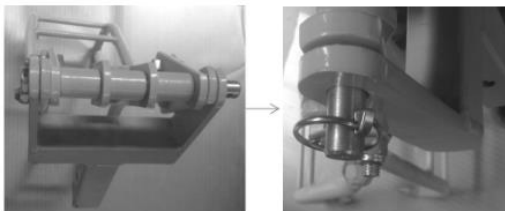
Step 1

Assemble the connected plate (#5) into the tong body (#1) with (#6, #7) the bolts and lock nuts. Be sure they are fastened.



Step 2

Insert the axle (#4) by passing it through the receiver (#10), the 4 piece plates (#5), the 3 piece tubes (#3), the swivel grab (#2), and the flat washer (#11). Lastly, insert the lynch pin (#8).



Step 3

When using the receiver, assemble the L pin (#9) and the linch pin (#8).



Before Each Use

⚠WARNING

Before using the tongs, be sure all bolts are fastened and tightened.

Operating Instructions

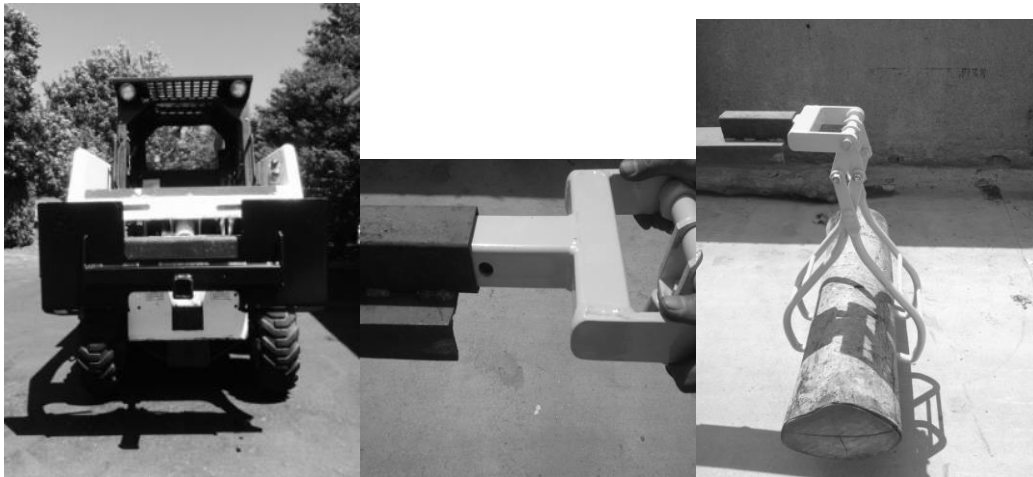
⚠WARNING

Do not exceed the load capacity of the tongs.

The tongs allow for use with a ½ inch chain on a tractor bucket. Use the chain pass through the swivel grab with the clevis fastening.



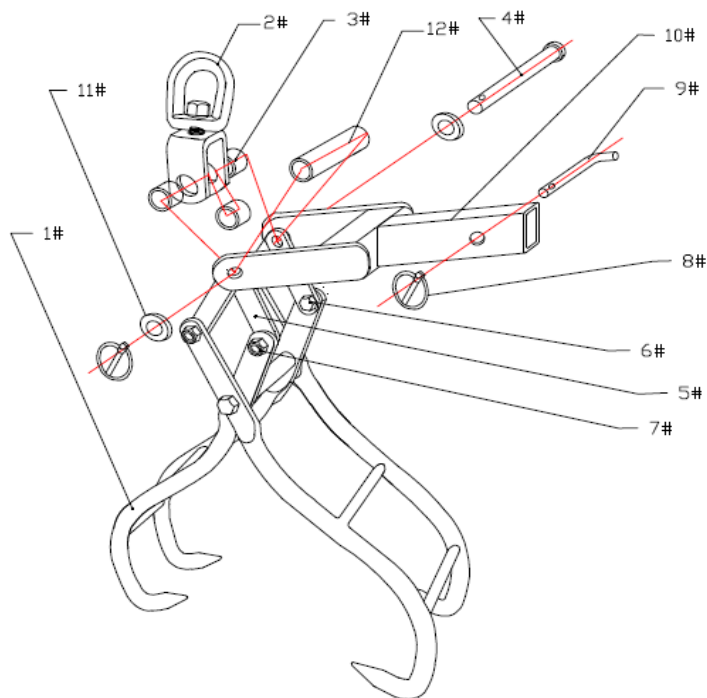
When operating, attach the tongs into the quick attach plate with a 2" receiver, change the (3pcs) tube (#3) into the tube for receiver (#12), and insert #10 into the quick attach hitch receiver plate. The 2 inch receiver fits into the quick attach hitch receiver plate on a tractor or a skid steer with the L Pin (#9).



Maintenance

Maintain the tongs by adopting a program of conscientious repair and maintenance. It is recommended that the general condition of any tool be examined before it is used. Keep your tongs in good repair. Keep them clean, dry, and free from oil and grease.

Parts Diagram



Parts List

Part Number	Item Description	Quantity	Comments
1	Lifting Tong Body	1	
2	Swivel Grab	1	
3	Short Tube Sleeve	3	Optional with Chains
4	Axle	1	
5	Connected Plate	3	
6	Bolts	4	M16×40 (51628) M16×45 (51629)
7	Lock Nuts	4	M16
8	Linch Pin	2	
9	L Pin	1	
10	2" Receiver	1	
11	Flat Washer	2	
12	Long Tube Sleeve	1	Optional with Receiver

Replacement Parts

- For replacement parts and technical questions, please call Customer Service at **1-800-222-5381**.
- Not all product components are available for replacement. The illustrations provided are a convenient reference to the location and position of parts in the assembly sequence.
- When ordering parts, the following information will be required: item description, item model number, item serial number/item lot date code, and the replacement part number.
- The distributor reserves the rights to make design changes and improvements to product lines and manuals without notice.

Limited Warranty

Northern Tool and Equipment Company, Inc. ("We" or "Us") warrants to the original purchaser only ("You" or "Your") that the Roughneck product purchased will be free from material defects in both materials and workmanship, normal wear and tear excepted, for a period of one year from date of purchase. The foregoing warranty is valid only if the installation and use of the product is strictly in accordance with product instructions. There are no other warranties, express or implied, including the warranty of merchantability or fitness for a particular purpose. If the product does not comply with this limited warranty, Your sole and exclusive remedy is that We will, at our sole option and within a commercially reasonable time, either replace the product or product component without charge to You or refund the purchase price (less shipping). This limited warranty is not transferable.

Limitations on the Warranty

This limited warranty does not cover: (a) normal wear and tear; (b) damage through abuse, neglect, misuse, or as a result of any accident or in any other manner; (c) damage from misapplication, overloading, or improper installation; (d) improper maintenance and repair; and (e) product alteration in any manner by anyone other than Us, with the sole exception of alterations made pursuant to product instructions and in a workmanlike manner.

Obligations of Purchaser

You must retain Your product purchase receipt to verify date of purchase and that You are the original purchaser. To make a warranty claim, contact Us at 1-800-222-5381, identify the product by make and model number, and follow the claim instructions that will be provided. The product and the purchase receipt must be provided to Us in order to process Your warranty claim. Any returned product that is replaced or refunded by Us becomes our property. You will be responsible for return shipping costs or costs related to Your return visit to a retail store.

Remedy Limits

Product replacement or a refund of the purchase price is Your sole remedy under this limited warranty or any other warranty related to the product. We shall not be liable for: service or labor charges or damage to Your property incurred in removing or replacing the product; any damages, including, without limitation, damages to tangible personal property or personal injury, related to Your improper use, installation, or maintenance of the product or product component; or any indirect, incidental or consequential damages of any kind for any reason.

Assumption of Risk

You acknowledge and agree that any use of the product for any purpose other than the specified use(s) stated in the product instructions is at Your own risk.

Governing Law

This limited warranty gives You specific legal rights, and You also may have other rights which vary from state to state. Some states do not allow limitations or exclusions on implied warranties or incidental or consequential damages, so the above limitations may not apply to You. This limited warranty is governed by the laws of the State of Minnesota, without regard to rules pertaining to conflicts of law. The state courts located in Dakota County, Minnesota shall have exclusive jurisdiction for any disputes relating to this warranty.



Distributed by:

Northern Tool & Equipment Company, Inc.

Burnsville, Minnesota 55306

www.northerntool.com

Made in China