

Product Data Sheet

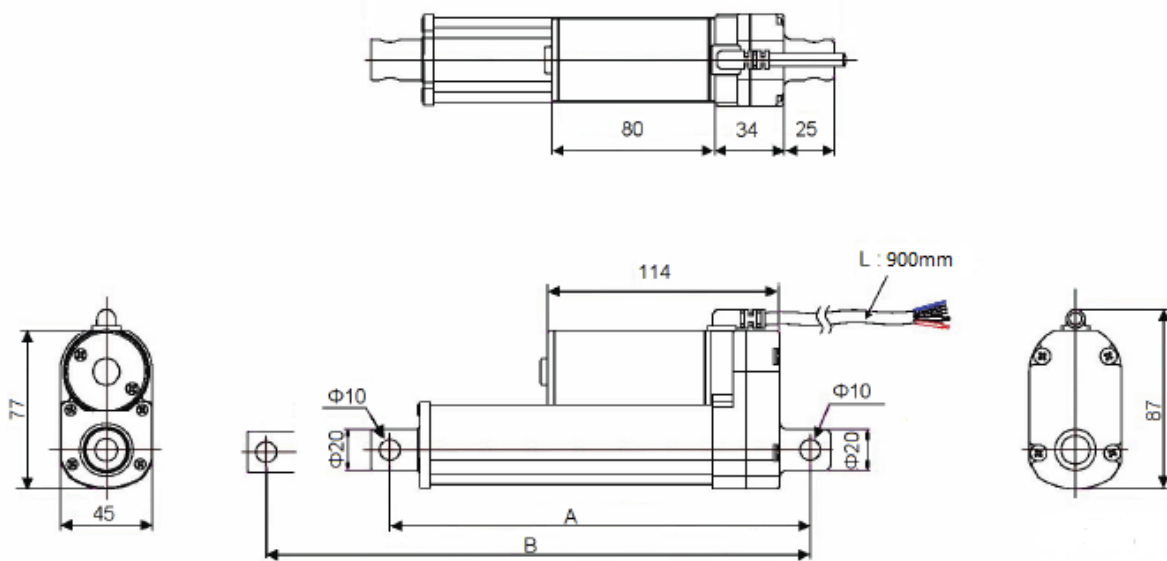


Standard Features:

- Compact design
- All aluminum frame and extension tube
- Nominal stroke lengths: 4" [100mm], 6" [150mm], 8" [200mm], 10" [250mm], 12" [300mm]
- Input voltage: 12VDC, 24VDC
- Standard gear ratio: 20:1 [other ratios available]
- Load range: 112 lbs. [500 Newtons] –to- 562 lbs. [2500 Newtons]
- Maximum current draw: 4.6 Amps @ 12 VDC
- Inrush current at maximum load: 6 amp @ 12 VDC, 3 amp @ 24 VDC
- Speed at no load: 0.24 in/sec [6.2 mm/sec] –to- 1.06 in/sec [26.8 mm/sec]
- Speed at full load: 0.17 in/sec [4.4 mm/sec] –to- 0.73 in/sec [18.6 mm/sec]
- Standard preset limit switches at both ends of stroke
- Mounting hole diameter (both ends): 3/8" [10mm]
- Duty cycle: 25% or 1 min continuous operation in 4 min.
- Working temperature: -13F [-25C] +149F [+65C]
- IP rating: IP65

Accessories:

- Mounting brackets
- Direction reversing wireless controller
- Direction reversing relays
- Direction reversing switches



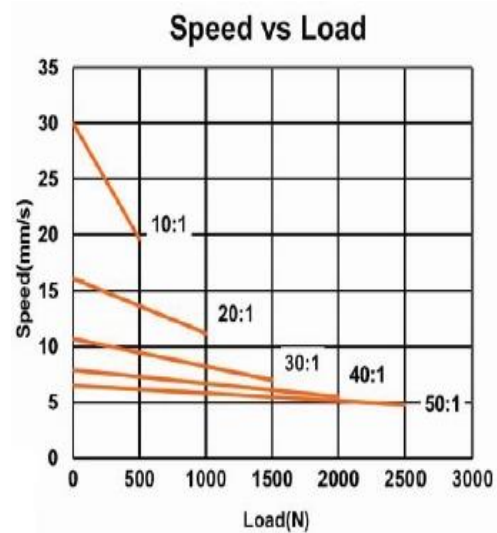
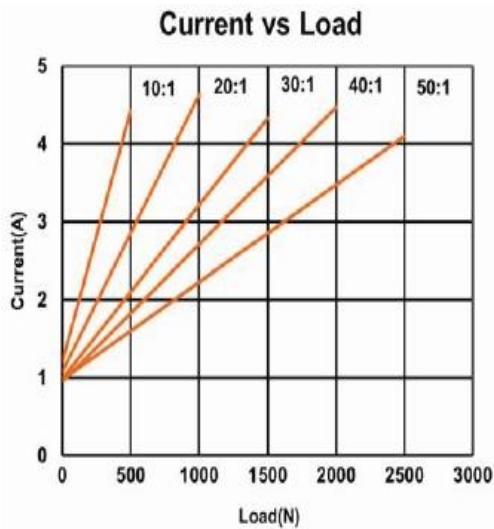
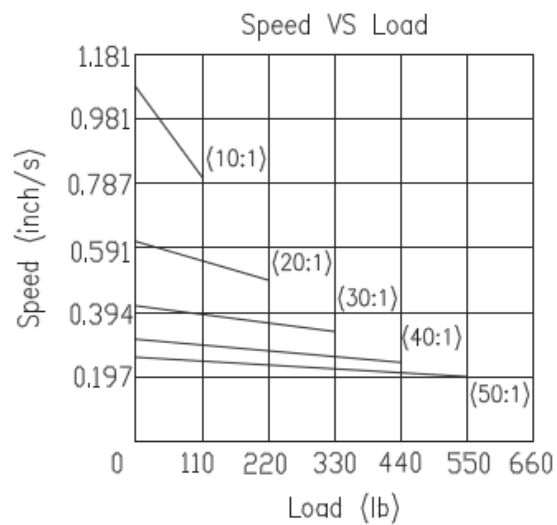
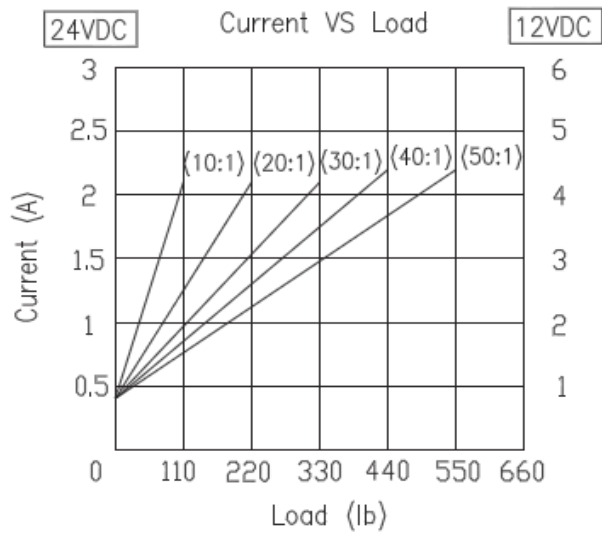
Dimensions are in millimeters

Dimensions (Standard Actuator)

| Nominal Stroke | 4" | | 6" | | 8" | | 10" | | 12" | |
|----------------------|-------|-----|-------|-----|-------|-----|-------|-----|-------|-----|
| | in | mm | in | mm | in | mm | in | mm | in | mm |
| Actual Stroke | 3.94 | 100 | 5.91 | 150 | 7.87 | 200 | 9.84 | 250 | 11.81 | 300 |
| Retracted Length (A) | 8.07 | 205 | 10.04 | 255 | 12.01 | 305 | 13.98 | 355 | 15.94 | 405 |
| Extended Length (B) | 12.01 | 305 | 15.94 | 405 | 19.88 | 505 | 23.82 | 605 | 27.76 | 705 |

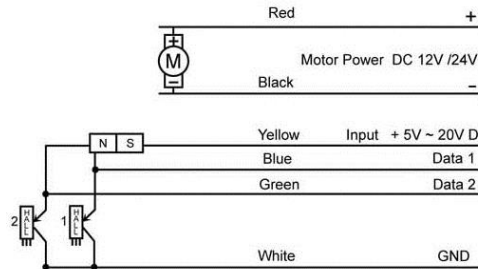
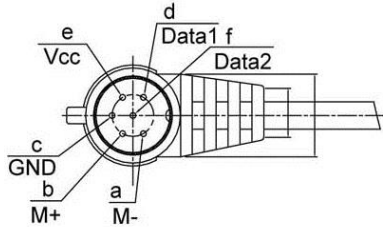
Performance Data

| Gear Ratio | Max Load/Dynamic | | Speed/No Load | | Speed/Max Load | |
|------------|------------------|---------|---------------|--------|----------------|--------|
| | Lbs. [US] | Newtons | inches/Sec | mm/Sec | inches/Sec | mm/Sec |
| 10:1 | 112 | 500 | 1.06 | 26.8 | 0.73 | 18.6 |
| 20:1 | 225 | 1000 | 0.58 | 14.7 | 0.41 | 10.4 |
| 30:1 | 337 | 1500 | 0.39 | 9.9 | 0.27 | 6.8 |
| 40:1 | 450 | 2000 | 0.29 | 7.4 | 0.20 | 5.1 |
| 50:1 | 562 | 2500 | 0.24 | 6.2 | 0.17 | 4.4 |



Electrical

Standard Plug for Hall Sensor Version



Red + // Black - : Extend
Red - // Black + : Retract

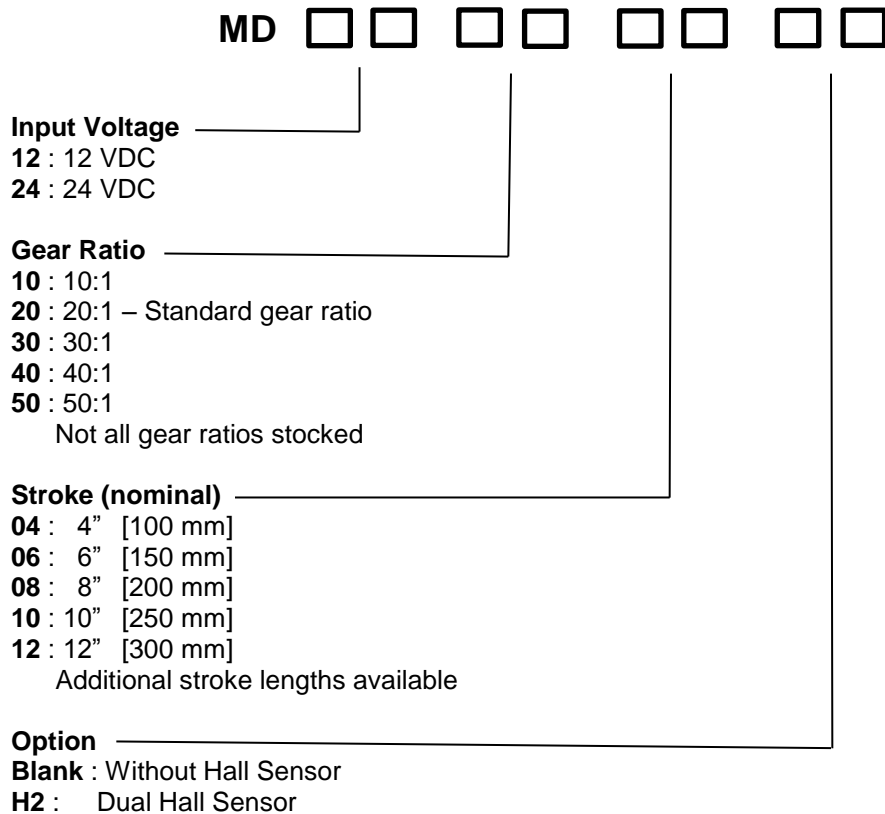
25 ma. maximum sink current

| Pin | | A | B | C | D | E | F |
|------------|---------------------|----------|------------|-------------|---------------|--------------|----------------|
| Wire Color | Dual Hall Sensor | Red (M+) | Black (M-) | White (GND) | Blue (Data 1) | Yellow (VCC) | Green (Data 2) |
| | Without Hall Sensor | | | ----- | ----- | ----- | ----- |

Resolution of Hall Sensor

| Gear Ratio | Signal Resolution | |
|------------|-------------------|-----------|
| | Pulses/in | Pluses/mm |
| 10 | 0.10 | 2.56 |
| 20 | 0.19 | 4.75 |
| 30 | 0.28 | 7.16 |
| 40 | 0.38 | 9.66 |
| 50 | 0.47 | 11.82 |

Ordering Key



Terms of Use

The user is responsible for determining the suitability of Concentric International products for specific applications. Due to continuous development in order to improve its products, Concentric International products are subject to change without prior notice. Concentric International reserves the right to discontinue the sale of any products displayed on its website or listed in its catalog or other written materials drawn up by Concentric International.