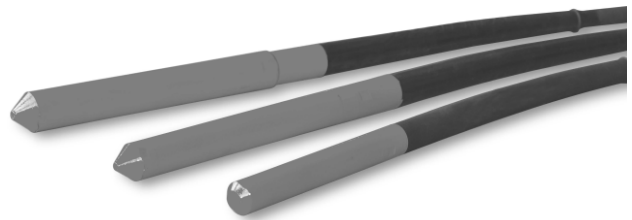


BRAVEPRO

OPERATORS MANUAL



PORTABLE ECCENTRIC CONCRETE VIBRATOR

BRPV105

Table of Contents

1. SAFETY INFORMATION

1.1 Safety Precautions	2
1.2 Operating Safety.....	3
1.3 Personal Safety.....	4
1.4 Labels	5-6

2. OPERATION

2.1 Operating Principle.....	7
2.2 Usage conditions	7
2.3 Before Starting.....	8
2.4 To Start	8
2.5 To Stop	8
2.6 Operation.....	8
2.7 When Operation is Finished	9

3. MAINTENANCE

3.1 Periodic Maintenance of the Electric Power Assy.....	10
3.2 Periodic Maintenance of Flexible Shaft and Poker Head.....	10
3.3 Lubrication.....	10
3.4 Transporting	11
3.5 Storage	11
3.6 Trouble Shooting	11

4. TECHNICAL DATA

5. WARRANTY

6. MAINTENANCE RECORD

7. EC DECLARATION

SAFETY INFORMATION

1.1 Safety Precautions

Before operating the power tool, read the manual carefully to become familiar with the location and proper use of all controls. Do not allow untrained or unauthorized personnel, especially children, to operate this machine. Use only the parts authorized by the factory for service.

This manual contains DANGER, WARNING, CAUTION callouts which must be followed to reduce the possibility of personal injury, damage to the equipment, or improper service.



This is the safety alert symbol. It is used to alert you to potential personal injury hazards. Obey all safety messages that follow this symbol to avoid possible injury or death.



DANGER

DANGER indicates a hazardous procedure which, if not avoided, will result in serious or mortal injury.



WARNING

WARNING indicates a danger or hazardous procedure which, if not avoided, could result in serious or mortal injury.



CAUTION

CAUTION indicates a danger or hazardous procedure which, if not avoided, could result in damage to machinery or moderate injury.

1.2 Operating Safety

- DO NOT modify the power tool without the prior consent of the manufacturer. We do not assume responsibility for any accident due to equipment modification.
- NEVER operate the power tool in purpose for which it is not intended.
- NEVER allow anyone to operate the machine without proper training. People operating the machine must be familiar with the risks and hazards associated with it. And familiar with the safety precautions and operation techniques.
- KEEP bystanders, children, and visitors away while operating a power tool.
- ALWAYS operate the tool with all safety devices and guards in place and in working order.
- ALWAYS wear appropriate clothing, wear hearing and eye protection when operating the tool.
- DO NOT use the tool near flammable material or in explosive environments. The exhaust pipe can get very hot during operation. Sparks can be emitted from it, and these can ignite flammable material.
- ALWAYS keep the work area clean and well lit. Cluttered and dark areas invite accidents.
- DO NOT clean or service the machine when it is running.
- NEVER use the defective parts.
- NEVER leave the power tool running unattended.
- DO NOT force the power tool. Use the correct power tool for your application.
- DO NOT use the power tool if the switch does not turn it on and off.
- DISCONNECT the plug from the power source before making any adjustments, changing accessories, or storing power tools.
- Power tool plugs must match the outlet. Never modify the plug in any way.
- DO NOT expose power tools to rain or wet conditions. Water entering a power tool will increase the risk of electric shock.
- DO NOT abuse the cord. Never use the cord for carrying, pulling or unplugging the power tool. Keep cord away from heat, oil, sharp edges or moving parts. Damaged or entangled cords increase the risk of electric shock.
- When operating a power tool outdoors, use an extension cord suitable for outdoor use. Use of a cord suitable for outdoor use reduces the risk of electric shock.
- If operating a power tool in a damp location is unavoidable, use a residual current device (RCD) protected supply. Use of an RCD reduces the risk of electric shock.

SAFETY INFORMATION

1.3 Personal Safety

- Stay alert, watch what you are doing and use common sense when operating a power tool. Do not use a power tool while you are tired or under the influence of drugs, alcohol or medication. A moment of inattention while operating power tools may result in serious personal injury..
- Use safety equipment. Always wear eye protection. Safety equipment such as dust mask, non-skid safety shoes, hard hat, or hearing protection used for appropriate conditions will reduce personal injuries.
- Avoid accidental starting. Ensure the switch is in the off position before plugging in. Carrying power tools with your finger on the switch or plugging in power tools that have the switch on invites accidents.
- Remove any adjusting key or wrench before turning the power tool on. A wrench or a key left attached to a rotating part of the power tool may result in personal injury.
- DO NOT OVERREACH. Keep proper footing and balance at all times. This enables better control of the vibrator in unexpected situations.
- Dress properly. Do not wear loose clothing or jewellery. Keep your hair, clothing and gloves away from moving parts. Loose clothes, jewellery or long hair can be caught in moving parts.
- If devices are provided for the connection of dust extraction and collection facilities, ensure these are connected and properly used. Use of these devices can reduce dust related hazards.
- Store idle vibrator out of the reach of children.

SAFETY INFORMATION



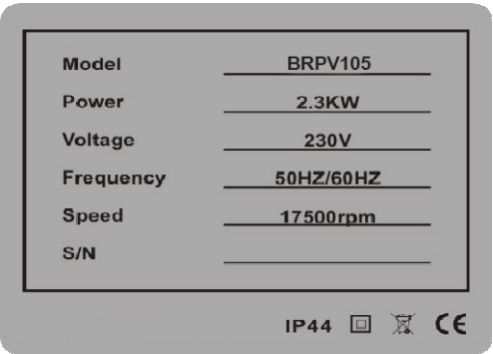
1.4 Labels

Your unit has adhesive labels containing the most important instructions and safety information.

- Make sure that all the labels are kept legible.
- Replace any missing or illegible labels.



SAFETY INFORMATION

Label	Meaning
	<p>WARNING! Always wear hearing and eye protection when operating the machine.</p>
	<p>WARNING! Always wear work gloves and non-skid, hard-toes shoes when operating the machine.</p>
	<p>A nameplate listing the model number and serial number is attached to each unit. Please record the information found on this plate so it will be available if the nameplate is lost or damaged. When requesting service information, the serial number should be specified of the unit.</p>

OPERATION

2.1 Operating Principle

The following instructions were compiled to provide you information on how to obtain long and trouble free use of the vibrator. Periodic maintenance of the vibrator is essential. Read the manual carefully and thoroughly familiarize yourself with the machine and all its functions. Failure to do so may injure yourself or a bystander.

2.2 Usage Conditions

The concrete vibrator consists of an electrical motor in an impact and shockproof plastic housing and a flexible poker vibrator. The flexible poker is attached to the part of the spindle which sticks out of the motor housing. On the motor housing is a switch for turning the electrical motor on and off.

The concrete vibrator is applied to tamp concrete products and concrete pouring construction with various kinds of reinforcing bars, clear up spiracle in concrete and offer intensity of concrete member. The vibrator can only be operated safely when the operation instructions and the safety instructions have been completely read and strictly adhered to

Never use the tool without the RCD (residual current device) provided with the tool!

Test the correct operation of the RCD (residual current device) before starting work!

Do not keep working the poker out of the concrete more than 5 minutes.

Do not restrict the movement of the poker during the work.

Do not stop the poker inside the concrete.

Change the wear parts to avoid damage to the internal parts.

OPERATION

2.3 Before Starting

Before starting the power tool, must know the location and function of all controls, and check the following items:

- The switch on the motor is in the off position.
- The cord has no defects.
- All bolted joints are tightened.
- Be sure the poker is well screwed to the flexible shaft.
- When notice wear parts, replace it.

NOTICE: Check for alignment of moving parts, binding of moving parts, breakage of parts, mounting, and any other conditions that may affect its operation.

2.4 To Start

Place the flexible poker into the concrete and press the switch on the motor to the ON position.

2.5 To Stop

Pull the flexible poker out of the concrete and turn the switch on the motor to the OFF position.

2.6 Operation

1. Keep the bending radius of the flexible hose to a minimum during use.
2. DO NOT start the tool with the poker head immersed in the concrete mix. After the tool has started, immerse the poker head quickly into the concrete mix.
3. NEVER turn the power tool off when the vibrator head is immersed in the concrete.
4. When moving around the jobsite, do not drag the poker head and shaft on the ground.
5. DO NOT allow the poker head to vibrate against already hardened concrete or steel used in reinforcement.
6. NEVER drop or knock the vibrator head against any hard objects.
7. DO NOT switch off or cut off the electricity supply when tap hose is taping concrete, or tap hose would become involved in concrete and difficult to be got out due to cease of vibration.
8. Pay attention to the fraying condition of carbon brush.
9. Check seal condition of all the joints between tube and tap hose during using it (please turn to left to fix connector), do not let water and concrete get into the vibrator and damage the bearing and oil tight in it and result in the cease of machine finally. Preventing motor from water and concrete can prolong the usage time of it.
10. Stop using of vibrator as soon as the appearance of abnormal voice, over great spark from brush, over high temperature and peculiar smell, and go on to use it

OPERATION

after researched the reason and repaired.

11. Each time after 100 hours use of vibrator, please take apart spare parts as tube, rotating shaft and hose to clean and replace lubricant grease, examine whether rubber oil tight and O type seal ring still well, replace them with new one if they are damaged. Please be informed that there should be no water and oil in the lower lumen of oil tight, otherwise the vibrator will vibrate in weak power. In order to prevent the vibrator from water, please use 0.2mm polytetrafluoroethylene belt to pack threading when your seal threading joint in assembling the machine.

CAUTION:

- If the shaft begins to helix excessively during operation, stop and investigate. This is an indication of an overload condition.
- The poker head is cooled by the concrete. Operation of the vibrator in air more than 2 minutes will cause overheating of the bearings which result in premature head failure.
- The distance between two vibration places and the vibration period in one place, depends on the thickness of the concrete layer and the composition of the concrete.

2.7 When Operation is Finished

1. Bring the head out of the concrete and proceed to stops. Never be stopped while it is introduced into the concrete.
2. Turn the switch on the motor to the OFF position.
3. ALWAYS rinse or wipe off the vibrator head and shaft any wet concrete before it dries or hardens.
4. Please clean the outside of machine, pony roll and tie up cable wire every time after you used it. Do not leave them lying about.

MAINTENANCE

To get long use and free of trouble, it is essential to perform periodic maintenance on the concrete vibrator.

Warning: Disconnect the electrical supply to the concrete vibrator before you can carry out any maintenance to it.

3.1 Periodic Maintenance of the Electric Power Assy

1. Only an expert shall work on the electrical parts.
2. Make sure that the electricity is off during repairs.
3. In all maintenance operations, original parts will be used.
4. Every 100 hours carbon brushes should be inspected.
5. Clean the ventilation vents in the front and back part of the motor periodically to avoid overheating. Ensure that no water gets into the motor housing.
6. After maintenance job and service, all safety devices should be assembled correctly.
7. After working 40 hours inspect the housing's holding bolts.
8. Every 12 months or more frequently, depending on the usage conditions, it's recommended an inspection be done by an authorized dealer.
9. Every 100 hours clean the air filter.

3.2 Periodic Maintenance of Flexible Shaft and Poker Head

1. To do the maintenance works in the transmission and poker, firstly disconnect of the motor.
2. In all maintenance operations, original parts will be used.
3. To check the wear of the poker controlling the outside diameter and length of the poker. Replace the housing or cap when the diameter or length in the least point is less than the specified in the table according to the model.
4. Lubricate the shaft every 100 working hours.
5. When the length of the shaft is not equal to the hose, it is necessary to repair before producing a bigger breakdown.
6. After maintenance job and service, all the parts must be assembled correctly.
7. Every 12 months of more frequently, depending on the usage conditions. It is recommended an inspection be done by an authorized dealer.

3.3 Lubrication

The long life and successful operation of any parts of machinery is dependent on frequent and thorough lubrication. A way to lubricate the shaft is to grasp some grease in the palm of the hand and run the close hand with the lubricant over the length of the shaft, leaving on the shaft a light coating of the lubricant on the entire length of the shaft. The recommended quantity is 25g per metre. Do not overlubricate, it could cause the grease penetrate into the poker. Do not clean the shaft with solvent.

MAINTENANCE

3.4 Transporting

- ALWAYS shut down the power tool before transporting.
- Ensure the vibrator is safe against slipping, overturning and blows during transportation.

3.6 Storage

For storage the vibrator for over 30 days, the following is required:

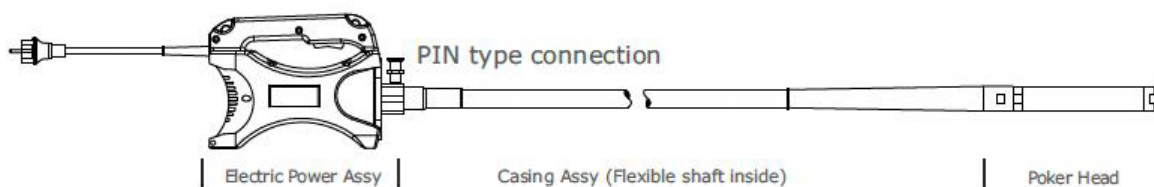
- Clean all external parts and frame with a soft cloth.
- Clean the flexible poker with water and a cleaning detergent that does not affect the poker material.
- Cover the machine and store in a clean, dry area.

3.7 Troubleshooting

SYMPTOM	POSSIBLE CAUSES	SOLUTION
Flexible shaft is too hot to hold.	No lubrication?	Lubricate the flexible shaft with some grease, leaving on the shaft a light coating of the lubricant on the entire shaft.
The poker head is not vibrating sufficiently.	Dirty?	Dismantle the poker housing, the flexible shaft and the pendulum, use a rag to clean and remove the grease from these parts, then lubricate the shaft again..
The poker head does not work when turn the switch on.	No power?	Check the electrical cord and plug. Replace the faulty parts. Tap against the tip of the poker head with a solid object.
Vibrating action is erratic.	Head or flexible shaft?	Check head or flexible shaft damage. Transmission in bad condition, broken hose.
The electric power rotates irregularly.	Worn out carbon brushes?	Replace the worn out carbon brushes for new ones (replace every 6-12 months).
The vibrator bearings fail.	The poker head has something wrong?	Check if the head has been working out of the concrete for a long time, water has penetrated into the head, or the housing has received strong stroke.
The electric power does not get into the required number of revolutions.	Extensive voltage drop, due to the feeder cable being too long (longer than 100m)	Move the electrical source closer to the working area.

TECHNICAL DATA

4. TECHNICAL DATA



Engine Power Assy

Model	BRPV105
Power Input Kw	2.3
Current A	10
Voltage Volts	115
Frequency Hz	50/60
Phase	single
Unloaded Speed r/min	17500
Weight kg(lb)	5.5(12)
Connection to Flexible shaft	Hexagonal Socket / Pin type

Poker Head & Casing Assy.

Model	BRVS6	BRVS10	BRVS13
Dia x length of Poker Head mm(in)	38x248(1.5x9.8)	38x248(1.5x9.8)	38x248(1.5x9.8)
Casing Assy Length m(ft)	2(6.6)	3(9.8)	4(13.1)
Weight kg(lb)	10.9(24.0)	12.6(27.8)	14.2(31.3)
Centrifugal Force kN	1.38	3.1	3.7
Vibrator Amplitude mm(in)	1(0.04)	1.4(0.06)	1.5(0.06)
Frequency vpm	12000-13000		
Revolution of Flexible Shaft rpm	12000-13000		



20195 South Diamond Lake Road, Suite 100 • Rogers, MN 55374
 Toll-Free: 800-350-8739 • Website: braveproducts.com • Email: sales@braveproducts.com

Dear Valued Customer:

The Brave product you just purchased is built with the finest material and craftsmanship. Use this product properly and enjoy the benefits from its high performance. By purchasing a Brave product, you show a desire for quality and durability. Like all mechanical equipment this unit requires a due amount of care. Treat this unit like the high-quality piece of machinery it is. Neglect and improper handling may impair its performance.

Thoroughly read the instructions and understand the operation before using your product. Always contact Brave Product Support at 1-800-350-8739 prior to having any service or warranty work performed, as some services performed by parties other than Brave approved service centers may void this warranty. This limited warranty is in lieu of any other warranty expressed or implied, written or oral and Brave assumes no other responsibility or liability outside that expressed within this limited warranty.

Limited Warranty for Brave Compaction Equipment:

BRPTR60H	BRPFP140H	BRPPT210H	BRPV105
BRPTR68H	BRPRP210H	BRPCS110H	
BRPFP120H	BRPRP220H	BRPCS210H	
BRPFP130H	BRPPT110H	BRPS105H	

	Consumer Warranty Period	Commercial Warranty Period
Bellow on Rammer		
	5 years from date of purchase by user	5 years from date of purchase by user
Gear box on Rammer or Plate Compactor		
	3 years from date of purchase by user	3 years from date of purchase by user
Other Equipment Parts on Rammer, Plate Compactor, Roller, Floor Saw, Power Trowel and Vibrating Screed		
	2 years from date of purchase by user	2 years from date of purchase by user
Vibratory Poker or Submersible Pump		
	1 year from date of purchase by user	1 year from date of purchase by user
Engines	The engine warranty is covered under the terms and conditions as outlined by the engine manufactures warranty contained herein and is the sole responsibility of the engine manufacturer. Normal engine maintenance such as spark plugs, oil changes, air filters, adjustments, fuel system cleaning and obstruction due to build up is not covered by this Brave limited warranty.	
Warranty Limitations	<ul style="list-style-type: none"> • Wear items: 30 day limited warranty. Includes, but not limited to, all clutches. • Any condition resulting from other than ordinary wear or any use for which the equipment was not intended • Any condition resulting from incorrect or inadequate maintenance or care. • Damage resulting from misuse, abuse, negligence, accidents or shipping. 	

“Consumer use” means personal residential household use by a consumer. “Commercial use” means all other uses, including, but not limited to, use for commercial, income producing or rental purposes or when purchased by a business.

This limited warranty applies to the original purchaser of the equipment (verification of purchase, in the form of a receipt, is the responsibility of the buyer), is non-transferable, and covers parts and labor. Parts will be replaced or repaired at no charge, except when the equipment has failed due to lack of proper maintenance. If a part is no longer available, the part may be replaced with a similar part of equal function. Any misuse, abuse, alteration or improper installation or operations will void warranty. Determining whether a part is to be replaced or repaired is the sole decision of Brave. Brave will not provide for replacement of complete products due to defective parts. Any costs incurred due to replacement or repair of items outside of a Brave approved facility is the responsibility of the buyer and not covered under warranty. Transportation costs to and from service center and/or service calls are the responsibility of the customer.

This limited warranty specifically excludes the following: failure of parts due to damage caused by accident, fire, flood, windstorm, acts of God, applications not approved by Brave in writing, corrosion caused by chemicals, use of replacement parts which do not conform to manufacturer’s specifications, damage related to rodent and/or insect infestation and damage caused by vandalism. Additional exclusions: loss of running time, inconvenience, loss of income, or loss of use, including any implied warranty of merchantability of fitness for a specific use. Also, outdoor power equipment needs periodic parts and service to perform well, and this limited warranty does not cover instances when normal use has exhausted the life of a component or the engine.

This limited warranty does not cover any personal injury or damage to surrounding property caused by failure of any part, misuse or inability to use the product. Alteration of the product, including safety features, shall void this limited warranty. Repair or replacement of parts does not extend the warranty period. This limited warranty gives you specific legal rights. You may also have other rights that vary by state. Please have model number, item number and serial number on hand prior to making a warranty claim or inquiry.

For products purchased on or after March 1, 2022

**EC DECLARATION OF CONFORMITY
CE-KONFORMITÄTSERKLÄRUNG
DECLARACIÓN DE CONFORMIDAD DE LA CE
DÉCLARATION DE CONFORMITÉ C.E.**

**Brave Products
20195 South Diamond Lake Rd., Suite 100 Rogers, MN 55374**

hereby certifies that the construction equipment specified hereunder / bescheinigt, da. das Baugerät / certifica que la máquina de construcción / atteste que le matériel :

PORTABLE ECCENTRIC CONCRETE VIBRATOR

has been produced in accordance with the following standards:/in übereinstimmung mit folgenden Richtlinien hergestellt worden ist:/ha sido fabricado en conformidad con las siguientes normas: / a été produit conforme aux dispositions des directives européennes ci-après :

**2006/42/EC
2006/95/EC
2004/108/EC
EN-60204-1(2006)
EN12649
EN60034-5(2001)
EN60034-1
EN61000-3-2
EN61000-3-3**

25.06.10

Date / Datum / Fecha / Date



Hermann Joser Lensing

Research and Development Manager

BRAVEPRO

Contact Us

Corporate Physical Address

Brave

A brand of Great Northern Equipment Distributing, Inc.
20195 South Diamond Lake Road, Suite 100
Rogers, MN 55374

Phone

800.350.8739

Website

www.braveproducts.com