




## 3-POINT MIDDLE BUSTER

OWNER'S MANUAL



 **WARNING:** Read carefully and understand all **INSTRUCTIONS** before operating. Failure to follow the safety rules and other basic safety precautions may result in serious personal injury.

**Item # 508312**

Thank you very much for choosing a Nortrac® Product! For future reference, please complete the owner's record below:

Model: \_\_\_\_\_ Purchase Date: \_\_\_\_\_

Save the receipt, warranty and these instructions. It is important that you read the entire manual to become familiar with this product before you begin using it.

This machine is designed for certain applications only. The distributor cannot be responsible for issues arising from modification. We strongly recommend this machine is not modified and/or used for any application other than that for which it was designed. If you have any questions relative to a particular application, DO NOT use the machine until you have first contacted distributor to determine if it can or should be performed on the product.

For technical questions, please call **1-800-222-5381**.

## SAFETY WARNINGS AND PRECAUTIONS



**WARNING: When using this tool, basic safety precautions should always be followed to reduce the risk of personal injury and damage to equipment. Read all instructions before using this tool!**

1. **Keep work area clean.** Cluttered areas invite injuries.
2. **Keep children away.** Children must never be allowed in the work area. Do not let them handle machines, tools, or extension cords.
3. **Store idle equipment.** When not in use, tools must be stored in a dry location to inhibit rust. Always lock up tools and keep out of reach of children.
4. **Use the right tool for the job.** Do not attempt to force a small tool or attachment to do the work of a larger industrial tool. There are certain applications for which this tool was designed. It will do the job better and more safely at the rate for which it was intended. Do not modify this tool and do not use this tool for a purpose for which it was not intended.
5. **Dress properly.** DO not wear loose clothing or jewelry as they can be caught in moving parts. Protective, electrically non-conductive clothes and non-skid footwear are recommended when working. Wear restrictive hair covering to contain long hair.
6. **Use eye and ear protection and protective clothing.** Always wear ANSI approved impact safety goggles. Wear an ANSI approved dust mask or respirator when working around metal, wood, and chemical dusts and mists. Wearing of gloves and protective clothing is recommended.
7. **Do not overreach.** Keep proper footing and balance at all times.
8. **Maintain tools with care.** Keep tools clean for better and safer performance. Follow instructions for lubricating and changing accessories.
9. **Remove adjusting keys and wrenches.** Check that keys and adjusting wrenches are removed from the tool or machine work surface before plugging it in.
10. **Stay alert.** Watch what you are doing, use common sense. Do not operate any tool when you are tired.
11. **Check for damaged parts.** Before using any tool, any part that appears damaged should be carefully checked to determine that it would operate properly and perform its intended function. Check for alignment and binding of moving parts, any broken parts or mounting fixtures, and any other condition that may affect proper operation. Any part that is damaged should be properly repaired or replaced by a qualified technician.
12. **Replaced parts and accessories.** When servicing, use only identical replaced parts. Use of any other parts will void the warranty. Only use accessories intended for use with this tool. Approved accessories are available from the distributor.

13. **Do not operate tool if under the influence of alcohol or drugs.** Read warning labels if taking prescription medicine to determine if your judgment or reflexes are impaired while taking drugs. If there is any doubt, do not operate the tool.
14. **Maintenance.** For your safety, service and maintenance should be performed regularly by a qualified service technician.

## PRODUCT SPECIFIC SAFETY PRECAUTIONS

1. Select an area for assembly that is clean and free of any debris which might cause persons working on the assembly to trip.
2. Do not lift heavy parts or assemblies. Use crane, jack, tackle, fork trucks or other mechanical devices.
3. Preview the assembly instructions in your operator's manual before proceeding further.
4. If the assembly instructions call for parts or assemblies to be blocked up, use only blocking material that is in good condition and is capable of handling the weight of the assembly to be blocked. Also insure that the blocking material is on a clean, dry surface.
5. Never put hands, or any part of body, under blocked up assemblies if at all possible.
6. After completing assembly, thoroughly inspect the machine to be sure that all nuts, bolts, hydraulic fittings or any other fastened assemblies have been thoroughly tightened.
7. Before operating the machine, thoroughly read the operation section of your operator's manual.
8. Before operating, read the maintenance section of your operator's manual to be sure that any parts requiring lubrication, such as gearboxes, are full, to avoid any possible damage.
9. Before operating equipment – If you have any questions regarding the proper assembly or operation, contact your dealer or representative.



**WARNING:** The warning, cautions and instructions discussed in this instruction cannot cover all possible conditions and situations that may occur. It must be understood by the operator that common sense and caution are factors which cannot be built into this product, but must be supplied by the operator.

## INSTALLATION AND OPERATION

Refer to the repair parts drawing in this manual to get an idea of how the parts need to be assembled for each individual implement.

Make sure the lower draw pins (pull pins) are installed correctly for your tractor.

Hitch pins should be assembled outward for category I hitches.

Insert the hitch pins into the ball sockets in the lower lift arms of the tractor 3 pt. hitch. Lock in place with linchpins (not furnished.) Attach the mast of the 3 pt. main frame by installing the tractor center link (top link) with a top link pin (not furnished.)

Adjust the top link assembly to obtain the correct angle of the implement. Check the tractor 3 pt. lift arms and adjust to level the implement from side to side.

For proper operation, level the Middle Buster by adjusting the tractor linkage. This will assure that the plow's shovel will run straight.

The tractor 3 pt. hydraulic lift system should be set to transfer most of the Middle Buster's weight and draft to the tractor to maximize traction (There may not be a 3 pt. Draft control on some small tractors – Refer to Tractor Owner's Manual.)

The Middle Buster can be used to plant and dig potatoes, form ridges for other crops, and form drainage ditches.

Set your 3 pt. hitch depth control to operate the Middle Buster at the desired depth. The deeper you operate, the greater the amount of soil you will plow or "hill-up". In dry or hard

soil conditions you may need to make a few passes. (If this is required, operating the ripper first may help considerably.)

The faster the forward speed, the further you will “throw” the soil from both sides of the plow shovel.

Operate at a speed that forms the furrow or “hilling” operation you desire.

By adjusting the length of the 3 pt. Top link, you can adjust the pitch of the plow shovel. In most soil conditions, the bottom of the shovel should be about level or with the point down slightly. This “pitch angle” will also determine how much soil is moved.

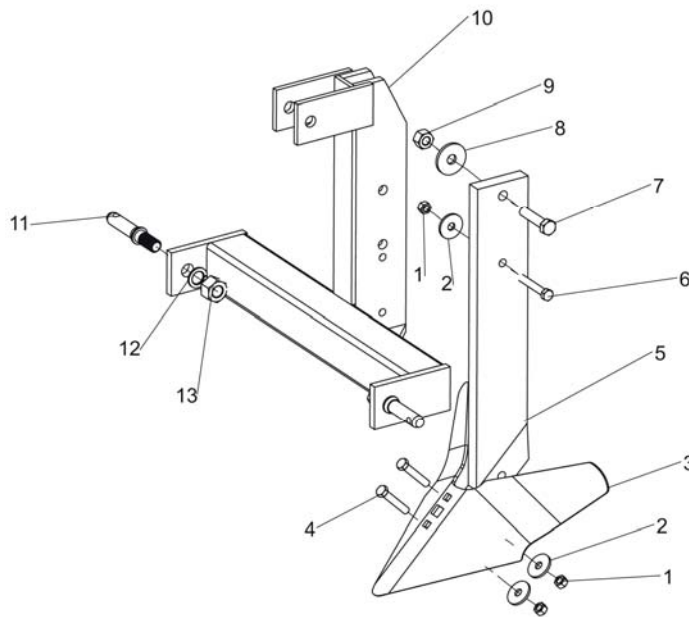


**WARNING:** NEVER allow anyone to ride while operating this equipment and keep bystanders at a safe distance.

## MAINTENANCE

1. Check all nuts and bolts and make sure they are tight.
2. Store in a clean and dry location.
3. Check points for wear and damage. Replace when necessary,
4. After seasonal use, paint the shanks and points to prevent excessive rusting during extended non-use periods. This will reduce the scour time when you use the implement again.

## DIAGRAM & PARTS LIST



Parts#	Description	Q'ty
1	Lock Nut M12	3
2	Washer 12	3
3	Furrower	1
4	Bolt M12*75	2
5	Shank	1
6	Bolt M12*65	1
7	Bolt M16*70	1

Parts#	Description	Q'ty
8	Washer 16	1
9	Lock Nut M16	1
10	Main Frame	1
11	Hitch Pin	2
12	Lock Washer 22	2
13	Bolt M22	2

For replacement parts and technical questions, please call **1-800-222-5381**.

**WARRANTY**

One-Year Limited Warranty



Northern Tool + Equipment Co.,  
2800 Southcross Drive West  
P.O. Box 1499 Burnsville, MN 55337-0499  
Made in China