



Brake Winch-1600 Lb. Capacity

Owner's Manual



⚠ WARNING: Read carefully and understand all ASSEMBLY AND OPERATION INSTRUCTIONS before operating. Failure to follow the safety rules and other basic safety precautions may result in serious personal injury.

Item #52810

SAVE THESE INSTRUCTIONS

Thank you very much for choosing an Ultra-Tow™ product!

For future reference, please complete the owner's record below:

Serial Number/Lot/Date Code: _____

Purchase Date: _____

Save the receipt, warranty, and this manual. It is important that you read the entire manual to become familiar with this product before you begin using it.

This winch is designed for certain applications only. Northern Tool & Equipment is not responsible for issues arising from modification or improper use of this product such as an application for which it was not designed. We strongly recommend that this product not be modified and/or used for any application other than that for which it was designed.

For technical questions, please call **1-800-222-5381**.

Table of Contents

Intended Use.....4

Technical Specifications4

Important Safety Information4

Specific Operation Warnings5

Winch Mounting and Cable Attachment6

Main Parts of Winch.....7

Assembly Instructions.....7

Before Each Use.....7

Operating Instructions.....8

Moving or Tensioning Loads8

After Each Use.....8

Maintenance8

Troubleshooting9

Parts Diagram.....10

Parts List.....10

Replacement Parts.....11

Limited Warranty.....12

Intended Use

This Ultra-Tow Brake Winch is designed for safer, easier boat loading and unloading. Winches are not to be used as hoists for lifting, supporting, or transporting people or for loads over areas where people can be present.

Brake Winches are suitable for many lifting and lowering applications. Self-locking brake winches provide additional safety and control for many lifting and pulling jobs. The automatic friction brake supplies constant, positive holding action and prevents a runaway load. The brake is fully automatic and the load remains in position any time the handle is released.

Technical Specifications

Property	Specification
Item No.	52810 (Empty)
Rated Capacity	1600 lbs.
Drum Capacity	5/16in. x 42ft. Wire Cable (not included)
Gear Ratio	4.2:1
Speed	1-Speed
Drum Size	5 1/4 in.
Handle Size	9 4/9 in.
Mounting Plate	5 1/3 X 3 1/2 in.
Mounting Hardware	3 M10 Bolts

Important Safety Information

⚠WARNING

- Read and understand all instructions. Failure to follow all instructions may result in serious injury or property damage.
- The warnings, cautions, and instructions in this manual cannot cover all possible conditions or situations that could occur. Exercise common sense and caution when using this winch. Always be aware of the environment and ensure that the tool is used in a safe and responsible manner.
- Do not allow persons to operate or assemble the winch until they have read this manual and have developed a thorough understanding of how it works.
- Do not modify this winch in any way. Unauthorized modification may impair the function and/or safety and could affect the life of the product. There are specific applications for which the product was designed.
- Use the right tool for the job. DO NOT attempt to force small equipment to do the work of larger industrial equipment. There are certain applications for which this equipment was designed. Products are safer and do a better job at the capacity for which they are intended. DO NOT use this equipment for a purpose for which it was not intended.
- Industrial or commercial applications must follow OSHA requirements.

⚠WARNING

- This product may contain chemicals known to the State of California to cause cancer, birth defects or other reproductive harm.

⚠️WARNING

WORK AREA SAFETY

- Inspect the work area before each use. Keep work area clean, dry, free of clutter, and well-lit. Cluttered, wet, or dark work areas can result in injury.
- Keep children and bystanders away from the work area while operating the tool. Do not allow children to handle the winch.

⚠️WARNING

PERSONAL SAFETY

- Stay alert, watch what you are doing, and use common sense when operating the winch. Do not use the tool while you are tired or under the influence of drugs, alcohol, or medication. A moment of inattention while operating the tool may result in serious personal injury.
- Dress properly. Do not wear loose clothing, dangling objects, or jewelry. Keep your hair, clothing and gloves away from moving parts. Loose clothes, jewelry, or long hair can be caught in moving parts. Air vents on the tool often cover moving parts and should be avoided.
- Wear the proper personal protective equipment when necessary. Use ANSI Z87.1 compliant safety goggles (not safety glasses) with side shields, or when needed, a face shield. Use a dust mask in dusty work conditions. Also use non-skid safety shoes, hardhat, gloves, dust collection systems, and hearing protection when appropriate. This applies to all persons in the work area.
- Do not overreach. Keep proper footing and balance at all times.

⚠️CAUTION

WINCH USE AND CARE

- Do not force the winch. Products are safer and do a better job when used in the manner for which they are designed. Plan your work, and use the correct product for the job.
- Check for damaged parts before each use. Carefully check that the winch will operate properly and perform its intended function. Replace damaged or worn parts immediately. Never operate the winch with a damaged part.
- Do not use a winch with a malfunctioning switch. Any power tool that cannot be controlled with the power switch is dangerous and must be repaired by an authorized service representative before using.
- Store the winch when it is not in use. Store it in a dry, secure place out of the reach of children. Inspect the tool for good working condition prior to storage and before re-use.
- Use only accessories that are recommended by the manufacturer for use with your winch. Accessories that may be suitable for one product may create a risk of injury when used with another tool. Never use an accessory that has a lower operating speed or operating pressure than the tool itself.

Specific Operation Warnings

⚠️WARNING

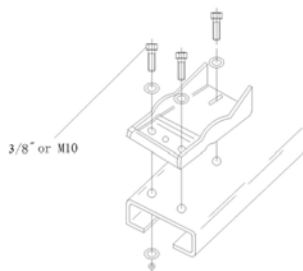
- Do not exceed the rated load capacity. Be aware of dynamic loading! Sudden load movement may briefly create excess load causing product failure.

- Do not use for overhead lifting.
- Do not lengthen the handle for additional leverage.
- Keep hands clear from the gear, drum and rolling cable. Always wear gloves when using the winch.
- Never leave winch unattended while supporting a load.
- Follow all instructions when replacing the cable or strapping.
- Always maintain a minimum of four (4) full turns of cable or strap around the drum of the winch. Never apply load to winch fully extended.
- Operate winch manually only.
- After moving the item, be sure to secure it. The winch is intended for short term use only.
- Do not use to transport people or animals.
- Not for use by or around children.

Winch Mounting and Cable Attachment

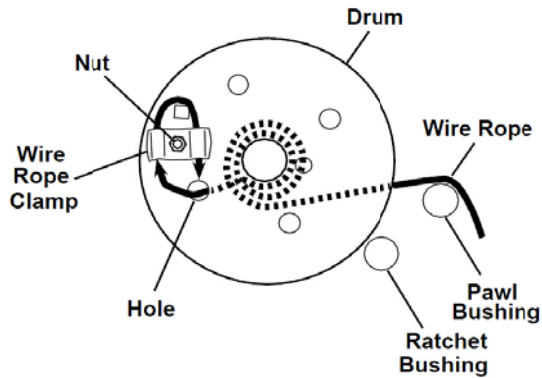
⚠WARNING

- Inspect before every use. Do not use if damaged or parts loose. Examine the Winch for structural cracks, bends, damage, frayed or kinked cable, and any other conditions that may affect the safe operation of the winch.
 - Do not use the winch even if minor damage appears. Keep cable straight to avoid kinking it. A kink permanently weakens the cable, even after it is straightened out. Kinked cable can fail suddenly and must not be used.
 - Do not use a recovery strap while winching. They are designed to stretch and can suddenly whip back towards the operator during a winching operation.
- For maximum strength and safety, this winch should be mounted with three 3/8" or M10 bolts, washers, and lock washers.

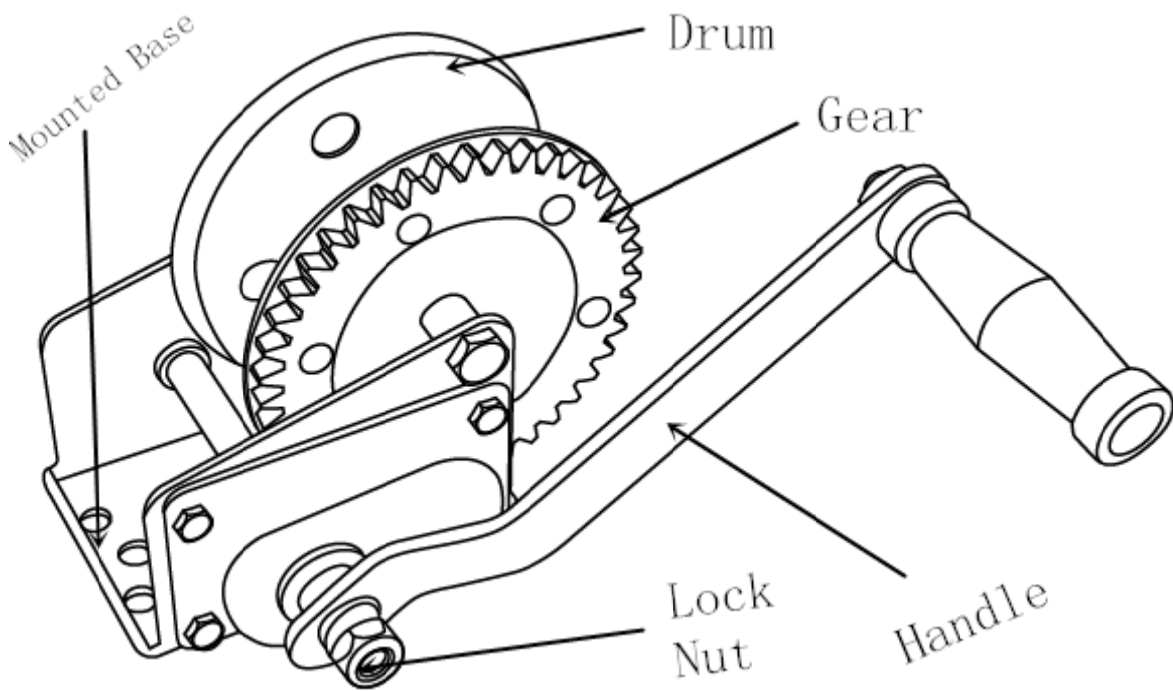


- Select a winch line with breaking strength at least 1-1/2 times the winch rating and a hook 1-1/2 times stronger than the line.
 - **CABLE REPLACEMENT:** Use extreme care when replacing cable, it is secured under tension by the cable clamp, and may spring back forcefully.
- 1) Place pawl in reel out position. Reel the old cable all the way out by turning handle counterclockwise.
 - 2) Loosen the nut and remove the old cable from underneath the cable clamp.
 - 3) Remove the old cable.
 - 4) Route new cable end over bushing and through the hole to the outside of the drum.

- 5) Install the cable under the cable clamp.
- 6) Tighten the nut securely.
- 7) Put pawl in reel in position, then reel the new cable onto drum by turning the handle clockwise, being careful not to allow kinking.
- 8) Test winch for proper operation.



Main Parts of Winch



Assembly Instructions

Insert handle and secure with lock nut.

Before Each Use

⚠ WARNING

CHECK BEFORE USE

Check the safety devices and the safe condition of the product.

- Check for visible defects.
- Check that all parts of the product are firmly attached.
- Check that the safety devices are in working order.

Operating Instructions

⚠WARNING

- The handle and nut must be tightened against the drive shaft before operating the winch.
- The wire rope must be properly wrapped on the drum to be able to support a load without damaging the wire rope.

Moving or Tensioning Loads

Winding/unwinding the cable without load

1. Place the ratchet lever in the center position.
2. The cable reel now moves freely in both directions.
3. Pull the steel cable at the fixed hook until the hook can be attached to the load to be moved.
4. Wind back the excessive cable by turning the crank clockwise.

Winding up the cable under load (towing, loading)

1. Hold the crank firmly and push gently to relieve the ratchet lever
2. Place the ratchet lever at position.
3. Turn the crank clockwise to evenly wind up the steel cable.

Unwinding the cable under load (lowering, unloading)

1. Hold the crank firmly and push gently to relieve the ratchet lever.
2. Place the ratchet lever at position.
3. The steel cable should be fully retracted again after use.

After Each Use

- Wipe external surfaces of the winch with a clean cloth.
- Periodically, lubricate the wire rope with light oil. Lubricate the gear with gear grease.

Maintenance

- This winch has been fully lubricated at the factory; but, for continued smooth performance and increased life, occasional greasing of gears and reel shaft and an occasional drop of oil on drive shaft bearings are recommended.
- Inspect periodically all parts, steel cable, accessories and replace them if damaged or used.
- Have damaged parts replaced by an authorized service center.
- Check the nuts periodically and tighten them if they are loose.

- Keep winch in good working order. Damaged or severely-worn parts create unnecessary dangers and could result in personal injury or property damage.
- Always lock up product and keep out of children.

Maintain the winch by adopting a program of conscientious repair and maintenance in accordance with the following recommended procedures. It is recommended that the general condition of any tool be examined before it is used. Keep your tool in good repair.

The following chart is based on a normal operation schedule.

Maintenance Interval	Maintenance Point
Daily before operating	Inspect periodically all parts, steel cable, accessories and replace them if damaged or used. Have damaged parts replaced by an authorized service center. Check the nuts periodically and tighten them if they are loose
After the first 20 operating hours	Follow the instructions for lubricating periodically. Lubricate the cable and hook regularly with slight grease. Grease the gears every 6 months. Use a good quality waterproof grease.

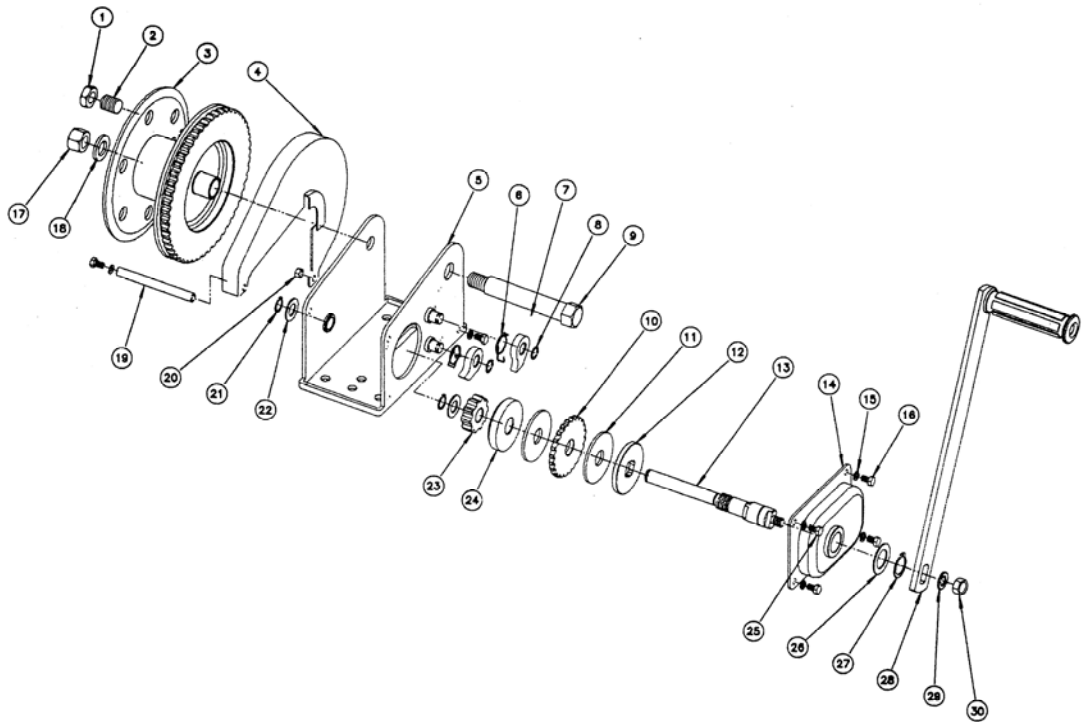
Troubleshooting

⚠WARNING

Do not use damaged equipment. If abnormal noise or vibration occurs, have the problem corrected before further use.

Failure	Possible Cause	Corrective Action
Cannot crank or is difficult	Overloaded	Change to a heavier winch
Gear deviation	Overused	Change to a new winch
	Gear worn	
Ratchet doesnot work	Ratchet worn	Change to a new winch
Cable worn	Overused	Change cable
Strap worn	Overused	Change strap

Parts Diagram



Parts List

No.	Item Description	Quantity	No.	Item Description	Quantity
1	Nut M16	1	16	Bolt M6x12	5
2	Screw	1	17	Nut M16	1
3	Twine Drum	1	18	Washer 16	1
4	Cover	1	19	Support Rod	1
5	Mounted Base	1	20	Nut M6	1
6	Snap Ring	2	21	Retaining Ring for Axle	2
7	Ratchet Claw	2	22	Washer A	2
8	Retaining Ring for Axle 12	2	23	Gear	1
9	Shaft	1	24	Clip A	1
10	Ratchet	1	25	Bolt M6x12	1
11	Friction Flake	2	26	Washer B	1
12	Clip B	1	27	Retaining Ring for Axle	1
13	Shaft	1	28	Rocker Arm	1
14	Cover Part	1	29	Washer 10	1
15	Washer 6	5	30	Nut M10	1

Replacement Parts

- For replacement parts and technical questions, please call Customer Service at **1-800-222-5381**.
- Not all product components are available for replacement. The illustrations provided are a convenient reference to the location and position of parts in the assembly sequence.
- When ordering parts, the following information will be required: item description, item model number, item serial number/item lot date code, and the replacement part reference number.
- The distributor reserves the rights to make design changes and or improvements to product lines and manuals without notice.

Limited Warranty

Northern Tool and Equipment Company, Inc. ("We" or "Us") warrants to the original purchaser only ("You" or "Your") that the Ultra-Tow product purchased will be free from material defects in both materials and workmanship, normal wear and tear excepted, for a period of one year from date of purchase. The foregoing warranty is valid only if the installation and use of the product is strictly in accordance with product instructions. There are no other warranties, express or implied, including the warranty of merchantability or fitness for a particular purpose. If the product does not comply with this limited warranty, Your sole and exclusive remedy is that We will, at our sole option and within a commercially reasonable time, either replace the product or product component without charge to You or refund the purchase price (less shipping). This limited warranty is not transferable.

Limitations on the Warranty

This limited warranty does not cover: (a) normal wear and tear; (b) damage through abuse, neglect, misuse, or as a result of any accident or in any other manner; (c) damage from misapplication, overloading, or improper installation; (d) improper maintenance and repair; and (e) product alteration in any manner by anyone other than Us, with the sole exception of alterations made pursuant to product instructions and in a workmanlike manner.

Obligations of Purchaser

You must retain Your product purchase receipt to verify date of purchase and that You are the original purchaser. To make a warranty claim, contact Us at 1-800-222-5381, identify the product by make and model number, and follow the claim instructions that will be provided. The product and the purchase receipt must be provided to Us in order to process Your warranty claim. Any returned product that is replaced or refunded by Us becomes our property. You will be responsible for return shipping costs or costs related to Your return visit to a retail store.

Remedy Limits

Product replacement or a refund of the purchase price is Your sole remedy under this limited warranty or any other warranty related to the product. We shall not be liable for: service or labor charges or damage to Your property incurred in removing or replacing the product; any damages, including, without limitation, damages to tangible personal property or personal injury, related to Your improper use, installation, or maintenance of the product or product component; or any indirect, incidental or consequential damages of any kind for any reason.

Assumption of Risk

You acknowledge and agree that any use of the product for any purpose other than the specified use(s) stated in the product instructions is at Your own risk.

Governing Law

This limited warranty gives You specific legal rights, and You also may have other rights which vary from state to state. Some states do not allow limitations or exclusions on implied warranties or incidental or consequential damages, so the above limitations may not apply to You. This limited warranty is governed by the laws of the State of Minnesota, without regard to rules pertaining to conflicts of law. The state courts located in Dakota County, Minnesota shall have exclusive jurisdiction for any disputes relating to this warranty.

ULTRA-TOW[™]

Distributed by:

Northern Tool & Equipment Company, Inc.

Burnsville, Minnesota 55306

www.northerntool.com

Made in China