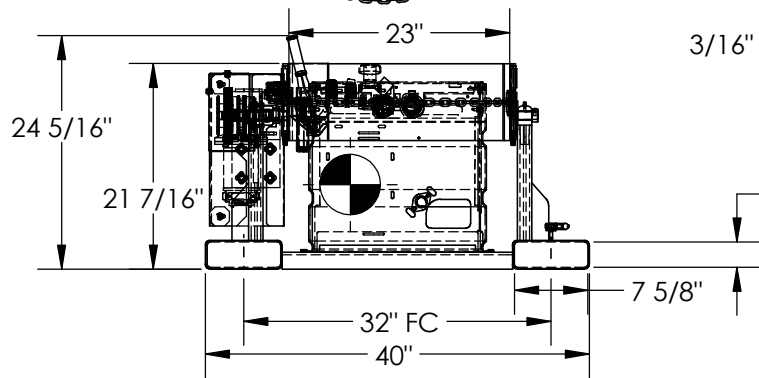
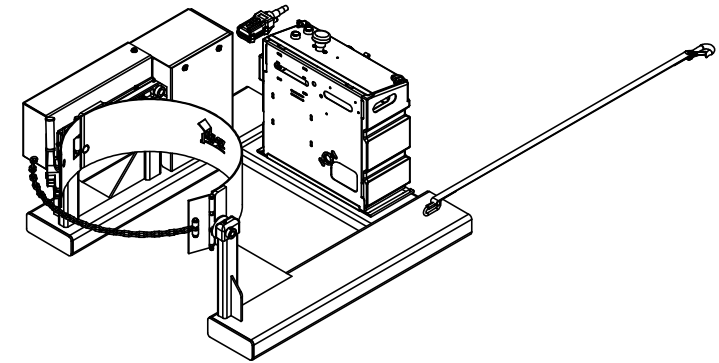
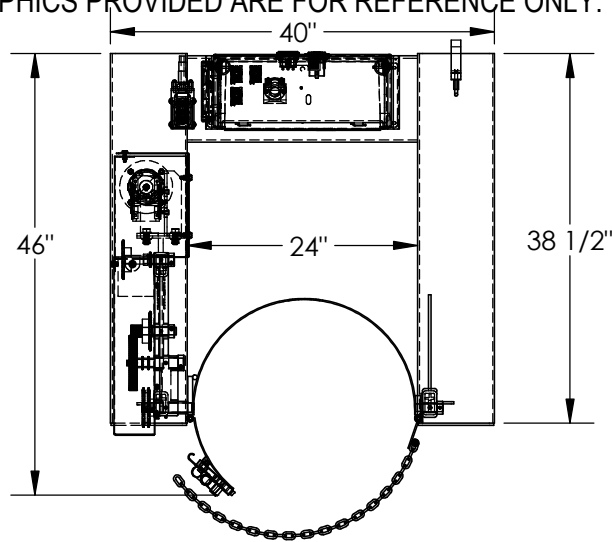


# FORK TRUCK DRUM CARRIER/ROTATOR - DCR-205-8-DC

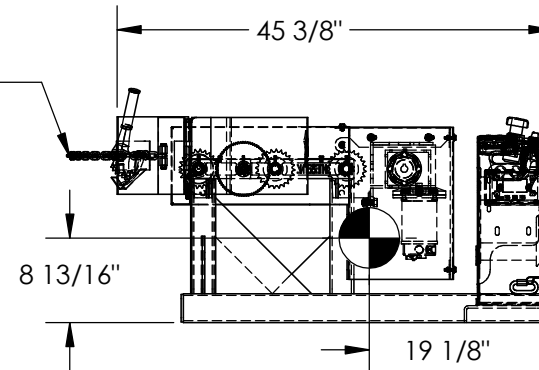
APPROX WEIGHT: 287.00 lbs.  
DOES NOT INCLUDE WEIGHT OF POWER OR PACKAGING!!!

\*\*\* ANY ADDITIONS, DELETIONS, OR OMISSIONS MUST BE CORRECTED ON THIS DRAWING AS THIS DRAWING WILL BE CONSIDERED ALL INCLUSIVE \*\*\*

ALL GRAPHICS PROVIDED ARE FOR REFERENCE ONLY. IF CERTAIN DIMENSIONS ARE CRITICAL PLEASE VERIFY THOSE DIMENSIONS WITH YOUR SALESPERSON



3/16" COIL CHAIN, 36" LG



FORK TRUCK  
RESTRAINT STRAP  
LENGTH IS 44"  
(NOT TO SCALE)

DIMENSION TOLERANCE ± 1/4"

## STANDARD FEATURES

MODEL NUMBER IS DCR-205-8-DC  
OVERALL WIDTH IS 40"  
OVERALL LENGTH IS 46"  
OVERALL HEIGHT IS 24 5/16"  
FITS 1- 55 GALLON DRUM  
MAX CAPACITY IS 800 LBS.  
FORK TRUCK RESTRAINT CHAIN IS 56"  
FORK POCKET CENTER-TO-CENTER IS 32"  
USABLE FORK POCKET SIZE IS 7 5/8" X 2 5/8"  
BUNG WRENCH INCLUDED (NOT SHOWN)  
LOST LOAD IS 275 LBS. (APPROX)  
EFFECTIVE THICKNESS IS FORK LENGTH MINUS 38 1/2"  
HANDHELD PUSH BUTTON CONTROL,  
W/ 8FT. EXTENDED COIL CORD  
ON BOARD BATTERY CHARGER AND INDICATOR GAUGE  
FRAME IS DURABLE BAKED IN POWDER COATED YELLOW FINISH  
CRADLE IS DURABLE BAKED IN POWDER COATED BLUE FINISH

## SPECIAL FEATURES

NONE

APPROX. WEIGHT / LOST LOAD = 287.00  
MINIMUM EFFECTIVE THICKNESS = FORK LENGTH  
MINUS 38 1/2"  
VERTICAL CENTER OF GRAVITY = 8 13/16"  
HORIZONTAL CENTER OF GRAVITY = 19 1/8"

NEVER EXCEED LOAD CENTER  
RATING PER FORKTRUCK  
MANUFACTURERS GUIDELINES.  
DO NOT USE THIS FORK TRUCK  
ATTACHMENT IF LOAD WILL EXCEED  
FORK TRUCK MANUFACTURER'S  
LOAD CENTER RATING

APPROVAL

I, THE UNDERSIGNED, AGREE THAT THE PRODUCT AS REPRESENTED SATISFIES DESIGN AND DIMENSION REQUIREMENTS. I ALSO ACKNOWLEDGE MY DUTY TO CONFIRM PRODUCT AND INSTALLATION COMPLIANCE WITH ALL APPLICABLE FEDERAL, STATE AND LOCAL REGULATIONS AND STANDARDS.

**UNITS REQUIRING APPROVAL DRAWINGS OR MODIFIED ARE NON-RETURNABLE**

As drawn       As marked

Signed: \_\_\_\_\_ Date: \_\_\_\_\_

Printed Name: \_\_\_\_\_

LEAD TIME WILL START UPON RECEIPT OF SIGNED APPROVAL DRAWING

DISTRIBUTOR'S NAME:		P.O.#
VESTIL MANUFACTURING		X
DRAWN BY: CRA		DATE: 9/30/2013
REFERENCE: X		SCALE: 1:18
QUOTED LEAD TIME: X		QUOTE # X
		SALES: X
		FILE NAME: 09-007-112-001