

iron ton™

9IN. DRYWALL SANDER

Owner's Manual



⚠ WARNING: Read carefully and understand all ASSEMBLY AND OPERATION INSTRUCTIONS before operating. Failure to follow the safety rules and other basic safety precautions may result in serious personal injury.

Item # 4975121

READ & SAVE THESE INSTRUCTIONS

Thank you very much for choosing an Ironton™ product!

For future reference, please complete the owner's record below:

Serial Number/Lot Date Code: _____

Purchase Date: _____

Save the receipt, warranty, and this manual. It is important that you read the entire manual to become familiar with this product before you begin using it.

This drywall sander is designed for certain applications only. Northern Tool and Equipment is not responsible for issues arising from modification or improper use of this product such as an application for which it was not designed. We strongly recommend that this product not be modified and/or used for any application other than that for which it was designed.

For technical questions, please call **1-866-915-8626**.



"Caution - Read the operating instructions to reduce the risk of injury"



Wear ear-muffs.

The impact of noise can cause damage to hearing.



Wear a breathing mask.

Dust which is injurious to health can be generated when working on wood and other materials. Never use the device to work on any materials containing asbestos!



Wear safety goggles.

Sparks generated during working or splinters, chips and dust emitted by the device can cause loss of sight.

DUST EXTRACTION

The dry wall sander is provided with a dust extraction facility. Please note however, that this does not preclude the user from wearing a face mask to prevent the inhalation of dust particles. All safety wear must be worn to use.

1.Work area

Keep work area clean and well lit. Do not operate power tools in explosive atmospheres, such as in the presence of flammable liquids, gases or dust. Power tools create sparks which may ignite the dust or fumes.Keep children and bystanders away while operating a power tool. Distractions can cause you to lose control.Safety Warnings Specific for Sanding Operations:Do not use excessively over sized sanding disc paper. Follow manufacturers recommendations, when selecting sanding paper. Larger sanding paper extending beyond the sanding pad presents a laceration hazard and may cause snagging, tearing of.

1.1:Electrical safety

Power tool plugs must match the outlet. Never modify the plug in any way. Do not use any adapter plugs with earthed (grounded) power tools. *Unmodified plugs and matching outlets will reduce risk of electric shock.*Avoid body contact with earthed or

grounded surfaces such as pipes, radiators, ranges and refrigerators. *There is an increased risk of electric shock if your body is earthed or grounded.* Do not expose power tools to rain or wet conditions. *Water entering a power tool will increase the risk of electric shock.* Do not abuse the cord. Never use the cord for carrying, pulling or unplugging the power tool. Keep cord away from heat, oil, sharp edges or moving parts. *Damaged or entangled cords increase the risk of electric shock.* When operating a power tool outdoors, use an extension cord suitable for outdoor use. *Use of a cord suitable for outdoor use reduces the risk of electric shock.* If operating a power tools in a damp location is unavoidable, use a residual current device (RCD) protected supply. *Use of an RCD reduces the risk of electric shock.*

1.2: Personal safety

Stay alert, watch what you are doing and use common sense when operating a power tool. Do not use a power tool while you are tired or under the influence of drugs, alcohol or medication. *A moment of inattention while operating power tools may result in serious personal injury.* Use safety equipment. Always wear eye protection. *Safety equipment such as dust mask, non-skid safety shoes, hard hat, or hearing protection used for appropriate conditions will reduce personal injuries.* Avoid accidental starting. Ensure the switch is in the off position before plugging in. *Carrying power tools with your finger on the switch or plugging in power tools that have the switch on invites accidents.* Remove any adjusting key or wrench before turning the power tool on. *A wrench or a key left attached to a rotating part of the power tool may result in personal injury.* Do not overreach. Keep proper footing and balance at all times. *This enables better control of the power tool in unexpected situations.* Dress properly. Do not wear loose clothing or jewellery. Keep your hair, clothing and gloves away from moving parts. *Loose clothes, jewellery or long hair can be caught in moving parts.* If devices are provided for the connection of dust extraction and collection facilities, ensure these are connected and properly used. *Use of these devices can reduce dust related hands.*

1.3: Power tool use and care

Use the correct power tool for your application. *The correct power tool will do the job better and safer at the rate for which it was designed.* Do not use the power tool if the switch does not turn it on and off. *Any power tool that cannot be controlled with the switch is dangerous and must be repaired.* Disconnect the plug from the power source before making any adjustments, changing accessories, or storing power tools. *Such preventive safety measures reduce the risk of starting the power tool accidentally.* Store idle power tools out of the reach of children and do not allow persons unfamiliar with the power tool or these instructions to operate the power tool. *Power tools are dangerous in the hands of untrained users.* Maintain power tools. Check for misalignment or binding of moving parts, breakage of parts and any other condition that may affect the power tools operation. If damaged, have the power tool repaired before use. *Many accidents are caused by poorly maintained power tools.* Keep cutting tools sharp and clean. *Properly maintained cutting tools with sharp cutting edges are less likely to bind and are easier to control.* Use the power tool, accessories and tool bits etc., in accordance with these instructions and in the manner intended for the particular type of power tool, taking into account the working conditions and the work to be performed. *Use of the power tool for operations different from intended could result in a hazardous situation.*

2.Voltage

Before connecting electric tool to the socket, make sure that the supply voltage be in accordance with rated voltage. If the former is greater than latter and the device is powered on by mistake, it may result in damage of devices and injuries of people. As for indefinite supply voltage of socket, never try to plug for use. Besides, the damage of devices may also occur if the supply voltage falls below rated voltage.

3.Device Application

As one of our products, the device belongs to the hand-held electric tools.The device mainly caters for lime surface, including the interior wall, ceiling, exterior wall, corridor, etc. Remove the painting lime mud from the wall, and make the surface even or smooth. It may promote the wall grinding efficiency and quality by workers.With various conditions taken into consideration in the design, the device may run at high or low speed.

4. Technical Specifications

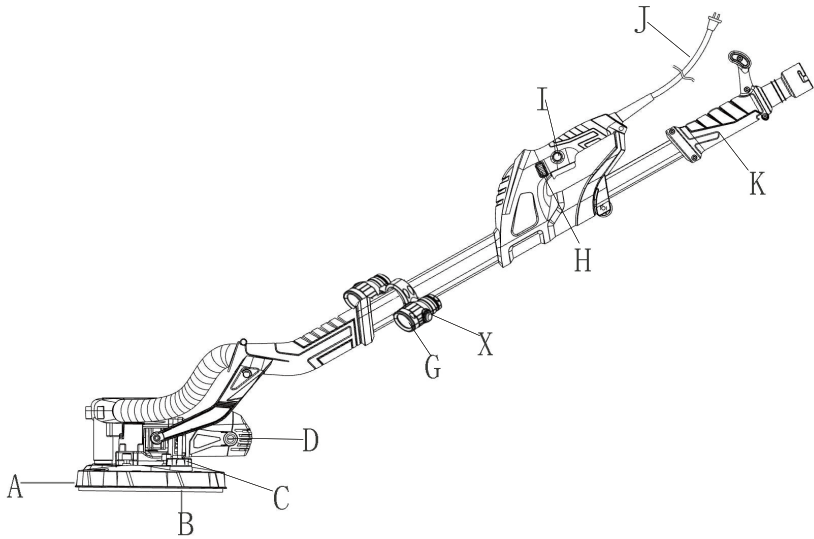
Rated Voltage: 120V

Frequency: 60Hz

Rated Power: 6.5A

No-load Speed: 800-1750min

5. Structure Overview



A: side cover

B: disc

C: suction regulating wheel

D: chassis

E: hose

G: led switch

H: speed control

I: switch

J: cable

K: handle

Q: sander paper

X: led switch

ASSEMBLY OF HEAD SCREWS

Use the Allen key to assemble, and this part is in the fitting bag.



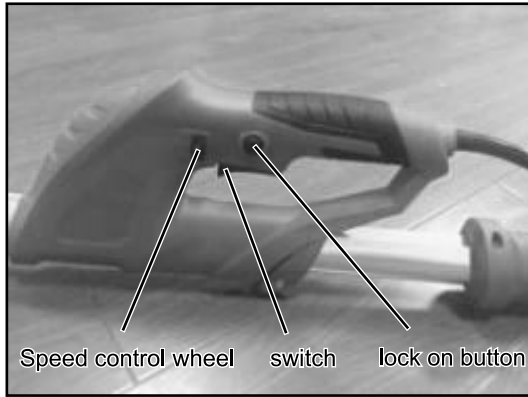
FITTING SANDING DISC

1. Ensure the sander is switched off and the plug is removed from the socket.
2. Select the sanding disc to be used
3. Line up the holes in the disc with those on the sanding pad. This is necessary for dust extraction purposes.
4. Press the disc onto the pad to secure it using the hook & loop backing.



SPEED CONTROL

To control the speed settings, turn the speed control wheel located on the trigger handle to the required position. When the speed is greater, the speed is faster, the effect of vacuuming will be better. When you need to use the machine at all times, you can press the lock on button after pressing the switch, which can keep the machine running at all times.



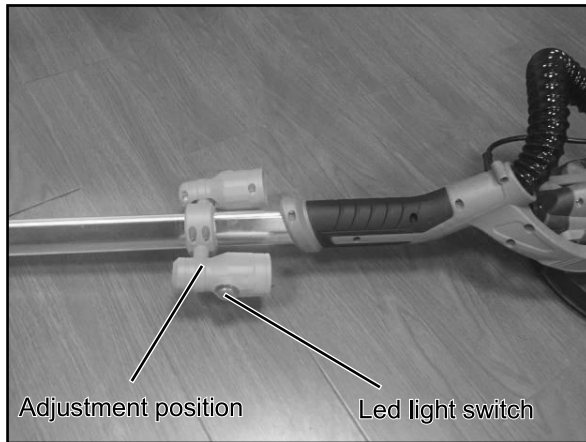
FITTING THE EXTENSION HANDLE

1. Loosen the locking wheel on the underside of the handle.
2. Insert extension handle to required length and tighten locking wheel.



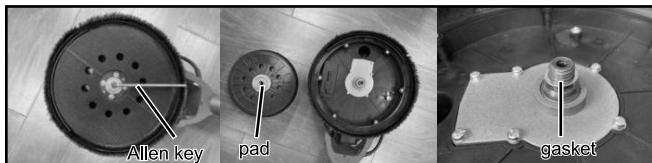
LED LIGHT & POSITION

When you need, you can turn on the light switch, and the left and right lights can be turned on independently. Of course, you can also turn the lamp barrel to adjust the position of the light.



CHANGE PAD & ADD GASKET

Remove the sandpaper, put the Allen wrench into the hexagon hole in the center of the viscid disc and then rotate anticlockwise to take off the damaged viscid disc. Install the new viscid disc, and, this area can add gasket, this can adjust the pads high and low that you can polish the wall very well.

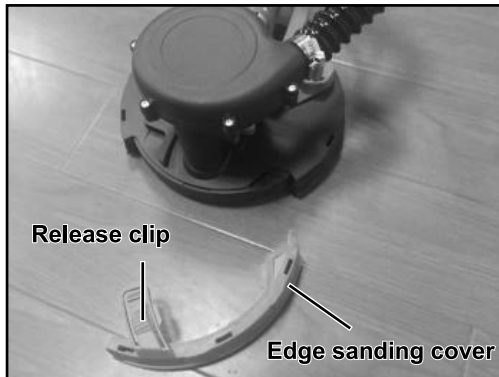


CORNER SANDING

If there is a need to sand edges or corners of walls.

1. Press down on the release clip
2. Pull edge sanding cover away from main sander body

This will give access to 1/4 of the sanding disc edge for polish the corners.



SUCTION SIZE ADJUSTMENT

suction adjustment knob can adjust the suction. The direction of the large arrow large suction, and vice versa. you can according the need to adjust this.

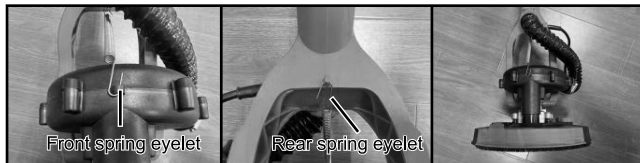


SANDING HIGH LEVEL & CEILINGS

The spring aids in the stability and positioning of the sander head when sanding high level or ceilings

1. Attach spring to the front and rear spring eyelets as shown. one end is connected

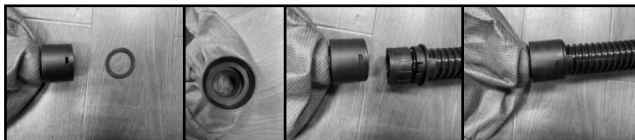
to the hole of the vacuum cover of the machine, and the other end is connected to the hole at the rear of the front fork



Extend the link between rod and hose

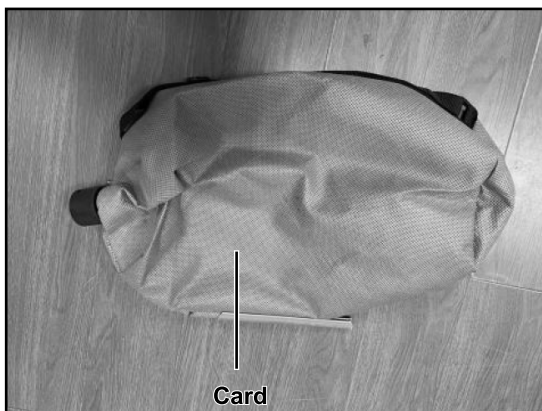


Connection between dust bag and hose



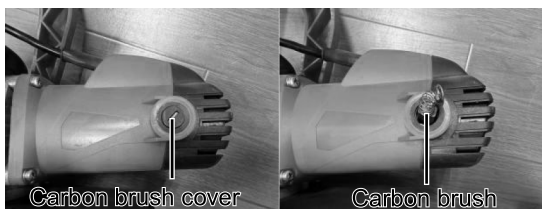
⚠ It is necessary to put the dust-proof ring into the joint.

When the dust bag is full of dust, the card can be opened and the dust can be poured out to recycle the dust bag.



REPLACING CARBON BRUSHES

1. Ensure the sander is switched off and the plug is removed from the socket.
2. Unscrew the plastic brush caps found towards the rear of the motor housing on both sides. Please check the life of the carbon brush regularly to avoid affecting the normal use of the machine.



The whole assembly for using



MAINTENANCE

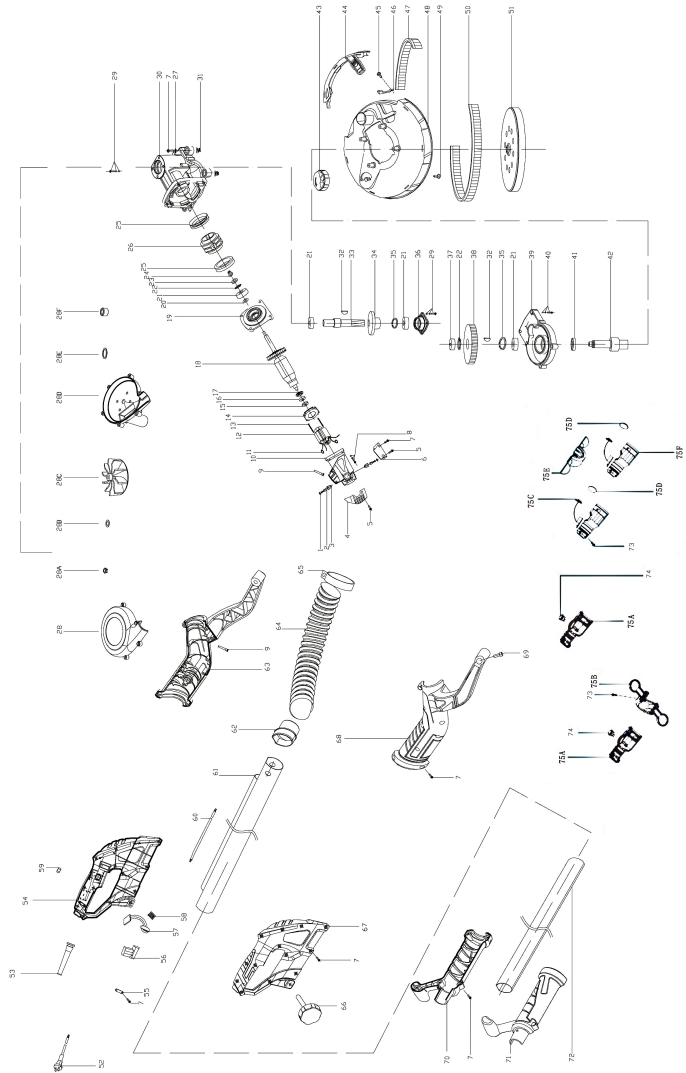
- ALWAYS inspect the sander before use and ensure it is in working condition.
- Ensure all air vents are clear.(Use vacuum cleaner to clean the machine where possible).
- Check the power cable to ensure it is sound and free from cracks, bare wires etc. Avoid using solvents when cleaning plastic parts, (most plastics are susceptible to damage from the various types of commercial solvents).

If you need the best vacuuming effect, you can connect to vacuum cleaner for supporting use

PART LIST

| NO | Accessory name | NO | Accessory name |
|-----|-----------------------------------|-----|-----------------------------------|
| 1 | Brush cover | 38 | big gear |
| 2 | Carbon brush | 39 | The front cover |
| 3 | Brush holder | 40 | Brain M4*20 with flat elastic pad |
| 4 | Case back cover | 41 | 24.2*3 oil seal |
| 5 | Screw BT4*12 | 42 | Output shaft |
| 6 | Case cover | 43 | Suction adjustment wheel |
| 7 | Screw BT4*14 | 44 | Disc side cover |
| 8 | Brain M4*25 with flat elastic pad | 45 | ST3*10 pointed head pad |
| 9 | Power cord jacket (small) | 46 | Blockages |
| 10 | chassis | 47 | Short brush strip |
| 11 | Spring | 48 | disc |
| 12 | stator | 49 | ST4*10 pointed head pad |
| 13 | Gasket ST4*50 | 50 | Long brush strip |
| 14 | Windshield | 51 | FG-S225 sticky disk |
| 15 | 608 bearing sleeve | 52 | Cable assembly |
| 16 | 627 2RS bearing | 53 | Power cord jacket (large) |
| 17 | Dust ring | 54 | Left handle |
| 18 | Rotor | 55 | Crimping board |
| 19 | Middle cover | 56 | switch |
| 20 | Gasket 10*18*0.2 | 57 | Governor |
| 21 | 6000 2RS bearing | 58 | Handle spring |
| 22 | 10-axis card | 59 | M6 nut |
| 23 | 20*9*4 wool ring | 60 | Cable assembly |
| 24 | Small bevel | 61 | Main aluminum tube |
| 25 | Turn the dust ring | 62 | Dust pipe joint |
| 26 | Rotating sleeve | 63 | Left front fork handle |
| 27 | M4's large flat pad | 64 | Dust guide tube |
| 28 | Gear box cover | 65 | Throat card 25-38 |
| 28A | M8 nut | 66 | Locking hand wheel |
| 28B | M8 gasket | 67 | Right handle |
| 28C | Vacuuming leaf | 68 | Right front fork handle |
| 28D | Vacuuming under cover | 69 | M6 Hexagonal Pin |
| 28E | 24*18*3 sheep yuan washer | 70 | Left rear handle |
| 28F | 18*10*12 steel sleeve | 71 | Right rear handle |
| 29 | Brain M4*12 with flat elastic pad | 72 | Extension rod |
| 30 | Gearbox | 73 | BT4*14 |
| 31 | Disc spring | 74 | Led switch |
| 32 | 3*10 semi-circle key | 75A | Lamp barrel cover |
| 33 | Small pinion | 75B | On the lamp |
| 34 | Umbrella gear | 75C | Led light |
| 35 | 26 hole card | 75D | The lens |
| 36 | Small end cap | 75E | Under the lamp |
| 37 | 607 2Z bearing | 75F | The lamp barrel cover |

SCHEMATIC DRAWING



REPLACEMENT PARTS

- For replacement parts and technical questions, please call Customer Service at **1-866-915-8626**.
- Not all product components are available for replacement. The illustrations provided are a convenient reference to the location and position of parts in the assembly sequence.
- When ordering parts, the following information will be required: item description, item model number, item serial number/item lot date code, and the replacement part reference number.
- The distributor reserves the rights to make design changes and improvements to product lines and manuals without notice.

LIMITED WARRANTY

Northern Tool and Equipment Company, Inc. ("We" or "Us") warrants to the original purchaser only ("You" or "Your") that the Ironton product purchased will be free from material defects in both materials and workmanship, normal wear and tear excepted, for a period of **one year** from date of purchase. The foregoing warranty is valid only if the installation and use of the product is strictly in accordance with product instructions. There are no other warranties, express or implied, including the warranty of merchantability or fitness for a particular purpose. If the product does not comply with this limited warranty, Your sole and exclusive remedy is that We will, at our sole option and within a commercially reasonable time, either replace the product or product component without charge to You or refund the purchase price (less shipping). This limited warranty is not transferable.

Limitations on the Warranty

This limited warranty does not cover: (a) normal wear and tear; (b) damage through abuse, neglect, misuse, or as a result of any accident or in any other manner; (c) damage from misapplication, overloading, or improper installation; (d) improper maintenance and repair; and (e) product alteration in any manner by anyone other than Us, with the sole exception of alterations made pursuant to product instructions and in a workmanlike manner.

Obligations of Purchaser

You must retain Your product purchase receipt to verify date of purchase and that You are the original purchaser. To make a warranty claim, contact Us at 1-800-222-5381, identify the product by make and model number, and follow the claim instructions that will be provided. The product and the purchase receipt must be provided to Us in order to process Your warranty claim. Any returned product that is replaced or refunded by Us becomes our property. You will be responsible for return shipping costs or costs related to Your return visit to a retail store.

Remedy Limits

Product replacement or a refund of the purchase price is Your sole remedy under this limited warranty or any other warranty related to the product. We shall not be liable for: service or labor charges or damage to Your property incurred in removing or replacing the product; any damages, including, without limitation, damages to tangible personal property or personal injury, related to Your improper use, installation, or maintenance of the product or product component; or any indirect, incidental or consequential damages of any kind for any reason.

Assumption of Risk

You acknowledge and agree that any use of the product for any purpose other than the specified use(s) stated in the product instructions is at Your own risk.

Governing Law

This limited warranty gives You specific legal rights, and You also may have other rights which vary from state to state. Some states do not allow limitations or exclusions on implied warranties or incidental or consequential damages, so the above limitations may not apply to You. This limited warranty is governed by the laws of the State of Minnesota, without regard to rules pertaining to conflicts of law. The state courts located in Dakota County, Minnesota shall have exclusive jurisdiction for any disputes relating to this warranty.

ironton™

Distributed by:

Northern Tool & Equipment Company, Inc.

Burnsville, Minnesota 55306

www.northerntool.com

Made in China