

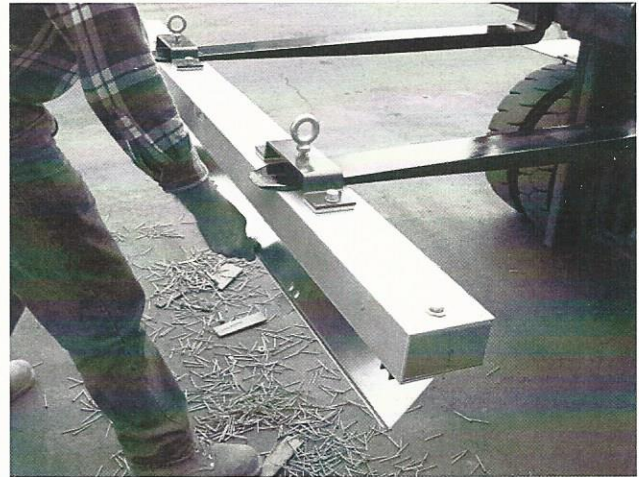
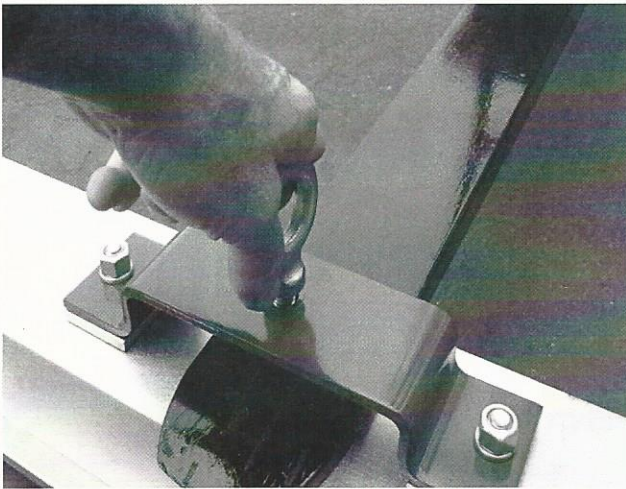
“RDS ROADMAG”

Instructions

The double strength Roadmag comes assembled and is ready to mount to vehicle.

***Simply tighten eyebolts down firmly against the forks (see figure # 1).**

Mount unit level with ground and operate about 2-4” from surface. Speed of travel, as well as mounting height greatly affects the Roadmag’s performance. Even the most powerful magnets will fail to attract steel objects if the unit is too high from ground, or if driving too fast. (2-4 mph travel speed is recommended)



Cleaning: Excessive buildup of magnetic particles will reduce the unit’s efficiency. Wipe the unit clean with glove or aluminum scraper and the Roadmag’s lifting power will return to normal.

***** To clean the “Load Release” model: Simple raise forks and push down on the hinged aluminum plate and let debris fall to ground (see figure # 2)**

The only maintenance necessary is to keep unit clean and oil hinges on the release models.

*******Avoid banging or scraping the unit against the ground to protect the internal magnets***